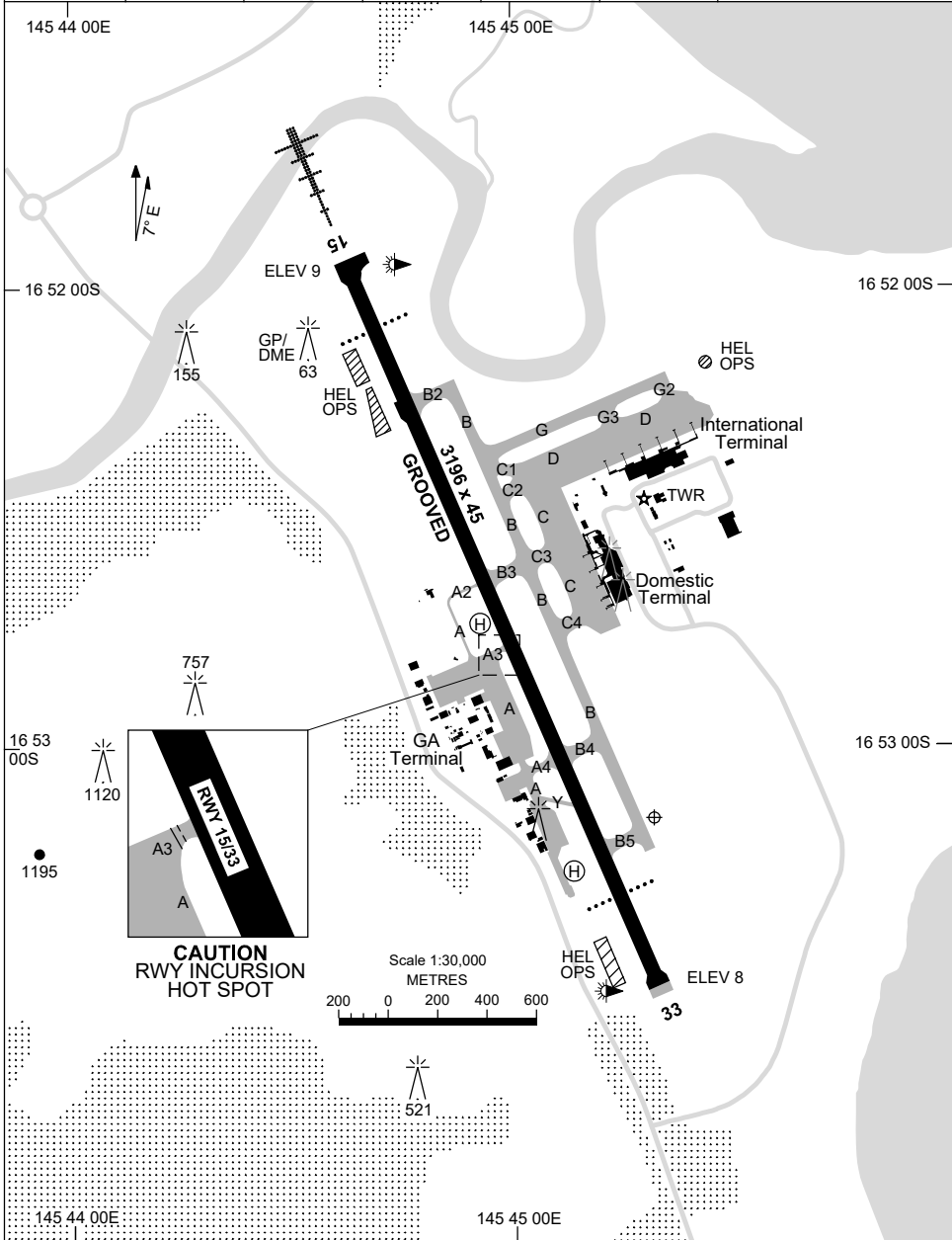


28 NOV 2024

AD ELEV 10
16 53 09S 145 45 19E

AERODROME CHART - Page 1
CAIRNS/CAIRNS INTL, QLD (YBCS)

ATIS 113.0 131.1	FIA CS APP 126.1	ACD 128.75	SMC 121.7	TWR 124.9	APP/DEP 118.4	Bearings are Magnetic Elevations in FEET AMSL
---------------------	---------------------	---------------	--------------	--------------	------------------	--



Changes: WDI REMOVED.

BCSAD01-181

1 DEC 2022

AD ELEV 10
16 53 09S 145 45 19E

AERODROME CHART - Page 2
CAIRNS/CAIRNS INTL, QLD (YBCS)

ATIS 113.0 131.1	FIA CS APP 126.1	ACD 128.75	SMC 121.7	TWR 124.9	APP/DEP 118.4	Bearings are Magnetic Elevations in FEET AMSL
---------------------	---------------------	---------------	--------------	--------------	------------------	--

--	--	--	--	--	--	--

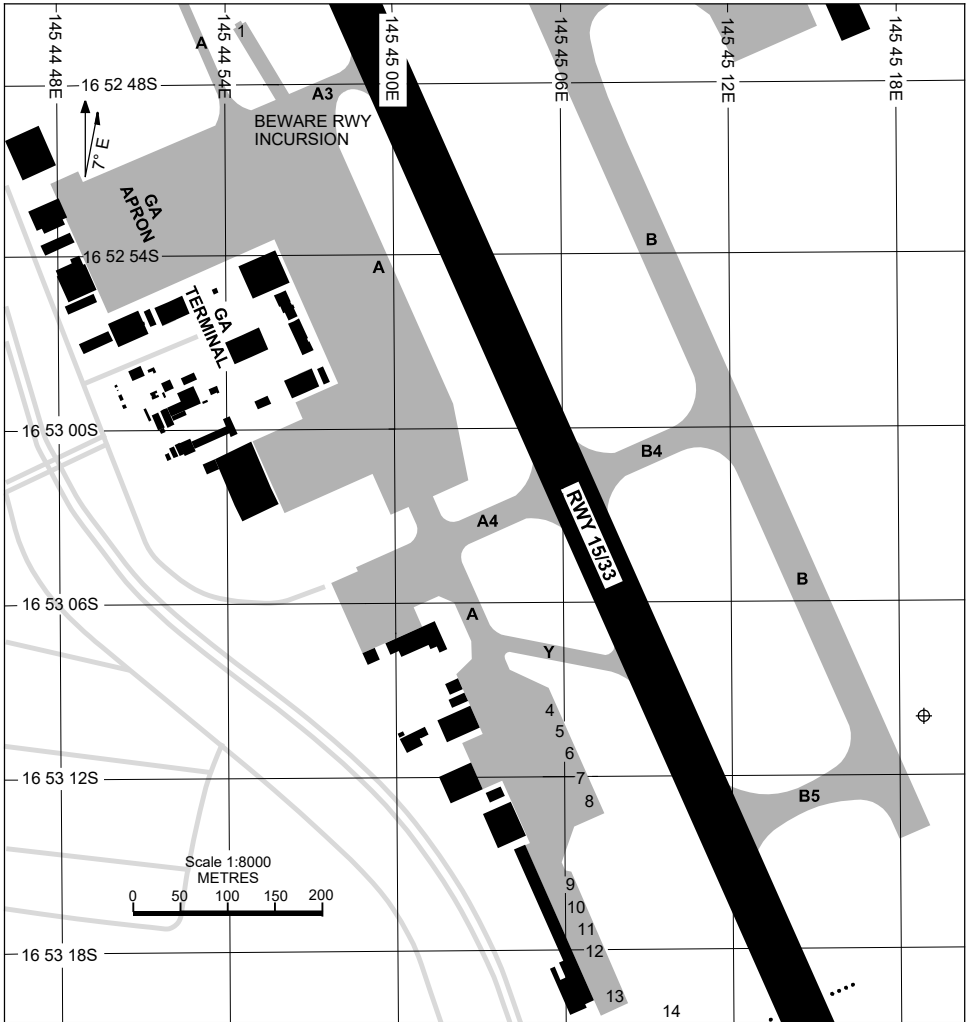
RWY	AERODROME LIGHTING					
	ABN : ALTN W/G 8 SEC TAXIWAY: GREEN CL, BLUE REFLECTIVE EDGE ON TWY C BTN C3 AND C4, BLUE EDGE ON TURNING PADS, RUNWAY GUARD LIGHT RL : MAN , SDBY (15 SEC)					
15 ¹⁵⁰	PAPI 3.0° 53FT MIRL HIRL HIAL - CAT I					
³³⁰ 33	PAPI 3.0° 61FT MIRL HIRL					

<p>NOTES</p>						
---------------------	--	--	--	--	--	--

Changes: NOTES DELETED.

BCSAD02-173

28 NOV 2024



PARKING POSITION INFORMATION

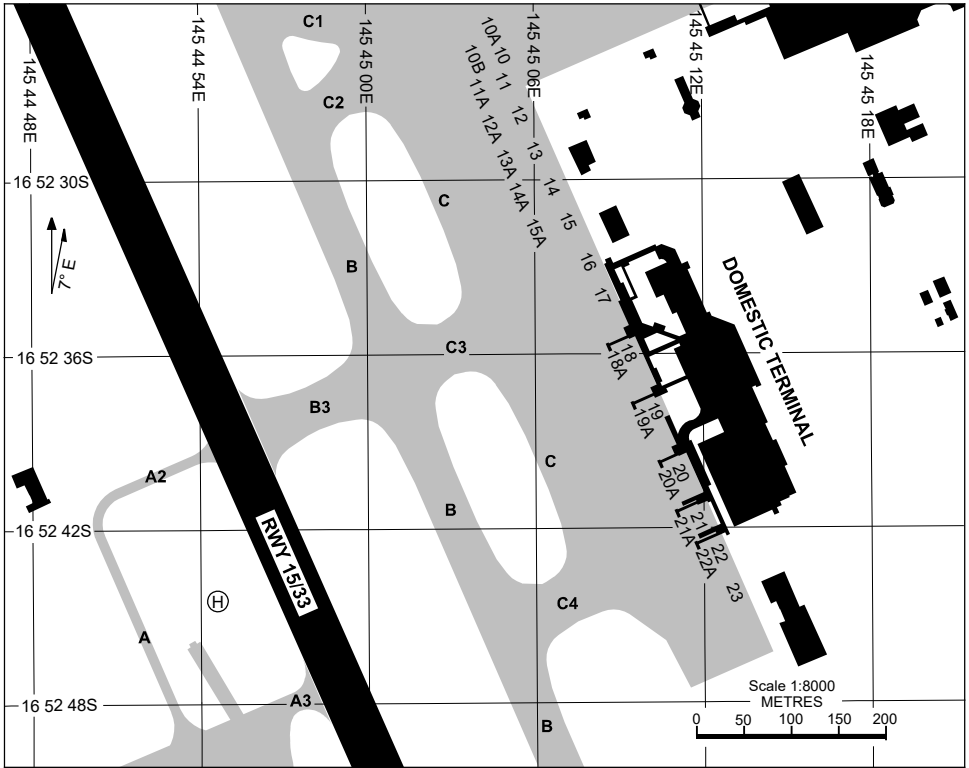
STAND	CO-ORDINATES		ELEV (ft)	CAPACITY	HYDRANT FUEL
1	16 52 45.89S	145 44 54.37E	8	MAX LENGTH 14.8M	N/A
4	16 53 09.77S	145 45 05.37E	5	MAX LENGTH 13.0M	N/A
5	16 53 10.55S	145 45 05.73E	5	MAX LENGTH 13.0M	N/A
6	16 53 11.32S	145 45 06.08E	4	MAX LENGTH 13.0M	N/A
7	16 53 12.09S	145 45 06.43E	4	MAX LENGTH 13.0M	N/A
8	16 53 12.87S	145 45 06.78E	4	MAX LENGTH 13.0M	N/A
9	16 53 15.77S	145 45 06.09E	6	MAX LENGTH 13.0M	N/A
10	16 53 16.55S	145 45 06.44E	6	MAX LENGTH 13.0M	N/A
11	16 53 17.32S	145 45 06.79E	6	MAX LENGTH 13.0M	N/A
12	16 53 18.10S	145 45 07.14E	6	MAX LENGTH 13.0M	N/A
13	16 53 19.61S	145 45 07.73E	6	MAX LENGTH 17.31M	N/A
14	16 53 20.25S	145 45 09.63E	6	MAX LENGTH 17.31M	N/A

Changes: WDI REMOVED.

BCSAP01-181

APRON CHART - DOMESTIC
CAIRNS/CAIRNS INTL, QLD (YBCS)

21 MAY 2020



PARKING POSITION INFORMATION

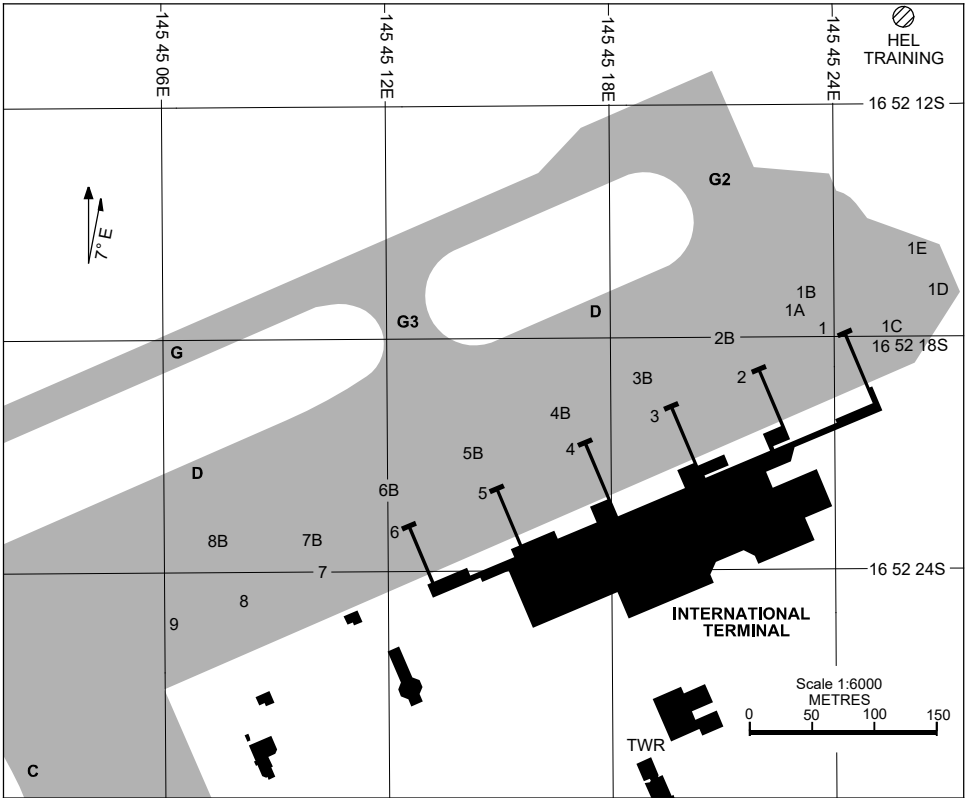
STAND	CO-ORDINATES		ELEV (ft)	CAPACITY	HYDRANT FUEL	DOCKING SYSTEM
10	16 52 25.63S	145 45 04.81E	10	B744	F35	MARSHALLER
10A	16 52 25.05S	145 45 04.54E	10	B738	F35	MARSHALLER
10B	16 52 25.81S	145 45 03.87E	10	B738	F35	MARSHALLER
11	16 52 26.59S	145 45 04.93E	11	B738	F35	MARSHALLER
11A	16 52 27.01S	145 45 03.94E	10	DH8C	NIL	MARSHALLER
12	16 52 27.80S	145 45 05.47E	11	B738	F35	MARSHALLER
12A	16 52 28.22S	145 45 04.48E	10	DH8C	NIL	MARSHALLER
13	16 52 29.01S	145 45 06.03E	11	B738	F35	MARSHALLER
13A	16 52 29.42S	145 45 05.03E	10	DH8C	NIL	MARSHALLER
14	16 52 30.18S	145 45 06.66E	11	B738	F35	MARSHALLER
14A	16 52 30.63S	145 45 05.57E	10	DH8C	NIL	MARSHALLER
15	16 52 31.38S	145 45 07.22E	11	B738	F35	MARSHALLER
15A	16 52 31.81S	145 45 06.11E	10	DH8C	NIL	MARSHALLER
16	16 52 32.80S	145 45 07.92E	11	B738	F35	MARSHALLER
17	16 52 34.00S	145 45 08.50E	11	B738	F35	MARSHALLER
18	16 52 35.78S	145 45 09.21E	11	B744	F35	MARSHALLER
18A	16 52 35.86S	145 45 09.00E	11	B767	F35	MARSHALLER
19	16 52 37.85S	145 45 10.15E	11	B744	F35	SAFEGATE
19A	16 52 37.95S	145 45 09.91E	11	B767	F35	MARSHALLER
20	16 52 39.92S	145 45 11.08E	11	B744	F35	SAFEGATE
20A	16 52 40.01S	145 45 10.88E	11	B767	F35	MARSHALLER
21	16 52 41.64S	145 45 11.65E	11	B738	F35	SAFEGATE
21A	16 52 41.70S	145 45 11.49E	11	B738	F35	MARSHALLER
22	16 52 42.76S	145 45 12.39E	11	B738	F35	SAFEGATE
22A	16 52 42.83S	145 45 12.24E	11	A321	F35	MARSHALLER
23	16 52 44.31S	145 45 13.19E	11	B733	F35	MARSHALLER

Changes: COORD FMT, ACFT STAND COORD, BAY 11B & C REMOVED, Editorial.

BCSAP02-163

APRON CHART - INTERNATIONAL
CAIRNS/CAIRNS INTL, QLD (YBCS)

23 MAR 2023



PARKING POSITION INFORMATION

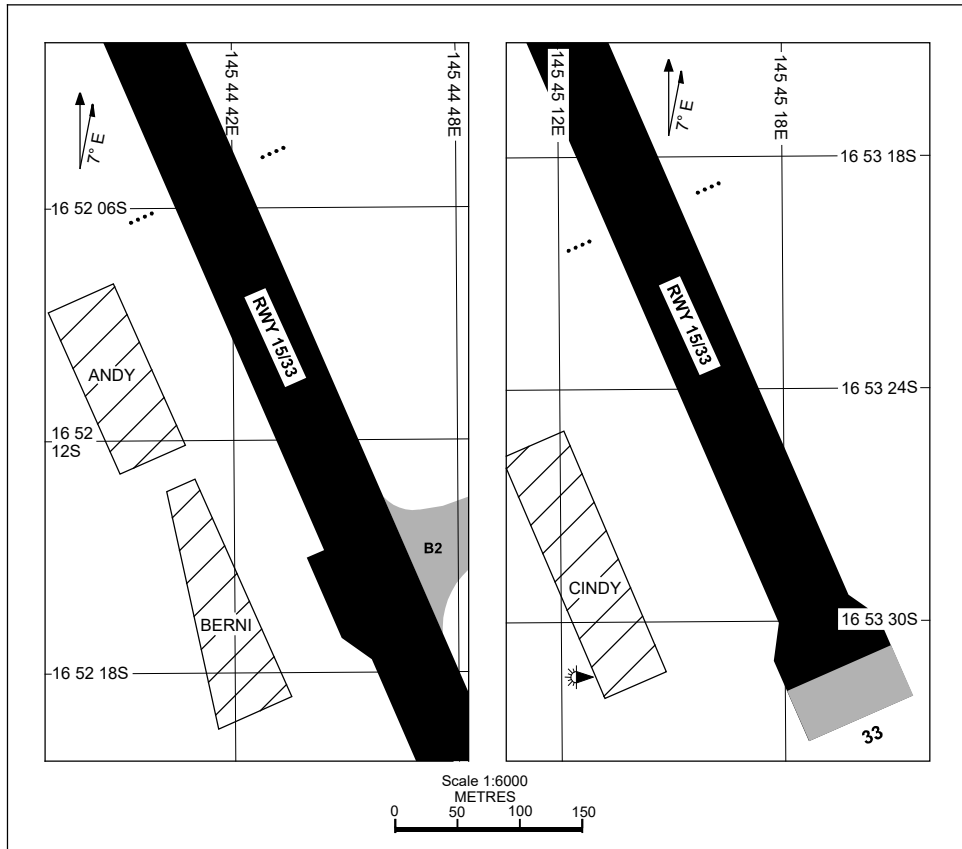
STAND	CO-ORDINATES	ELEV (ft)	CAPACITY	HYDRANT FUEL	DOCKING SYSTEM
1	16 52 17.90S 145 45 23.66E	10	B744	F35	SAFEGATE
1A	16 52 17.30S 145 45 23.00E	10	F100	F35	MARSHALLER
1B	16 52 16.88S 145 45 23.23E	9	DH8D	NIL	MARSHALLER
1C	16 52 17.75S 145 45 25.54E	9	ATR72	NIL	MARSHALLER
1D	16 52 16.80S 145 45 26.83E	9	B350	NIL	MARSHALLER
1E	16 52 15.73S 145 45 26.25E	9	ATR72	NIL	MARSHALLER
2	16 52 19.08S 145 45 21.51E	11	B744	F35	SAFEGATE
2B	16 52 18.08S 145 45 21.09E	11	DH8D	NIL	MARSHALLER
3	16 52 20.01S 145 45 19.28E	11	B744	F35	SAFEGATE
3B	16 52 19.01S 145 45 18.86E	11	DH8D	NIL	MARSHALLER
4	16 52 20.95S 145 45 17.05E	11	B744	F35	SAFEGATE
4B	16 52 19.94S 145 45 16.63E	11	DH8D	NIL	MARSHALLER
5	16 52 21.94S 145 45 14.69E	11	B744	F35	SAFEGATE
5B	16 52 20.94S 145 45 14.26E	11	DH8D	NIL	MARSHALLER
6	16 52 22.88S 145 45 12.45E	11	B744	F35	SAFEGATE
6B	16 52 21.88S 145 45 12.00E	11	DH8D	NIL	MARSHALLER
7	16 52 23.99S 145 45 10.25E	12	B744	F35	MARSHALLER
7B	16 52 23.18S 145 45 09.92E	12	DH8D	NIL	MARSHALLER
8	16 52 24.69S 145 45 08.13E	12	B763	F35	MARSHALLER
8B	16 52 23.16S 145 45 07.38E	12	SA340	NIL	MARSHALLER
9	16 52 25.35S 145 45 06.24E	11	B763	F35	MARSHALLER
HEL TRAINING	16 52 09.76S 145 45 25.91E	8	MAX LENGTH 17.5M	N/A	NIL

Changes: BAY 7 AND 8 DOCKING SYSTEM.

BCSAP03-174

HELICOPTER OPERATING AREAS CHART CAIRNS/CAIRNS INTL, QLD (YBCS)

24 MAR 2022



PARKING POSITION INFORMATION

STAND	CO-ORDINATES	ELEV (ft)	CAPACITY	HYDRANT FUEL	DOCKING SYSTEM
ANDY	16 52 10.46S 145 44 38.10E	6	N/A	N/A	NIL
BERNI	16 52 16.29S 145 44 40.96E	4	N/A	N/A	NIL
CINDY	16 53 27.88S 145 45 12.66E	4	N/A	N/A	NIL

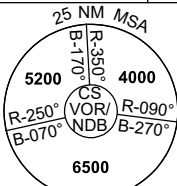
Changes:RWY 33 END.

BCSAP04-170

DME or GNSS ARRIVAL PROCEDURES CAIRNS/CAIRNS INTL, QLD (YBCS) Page 1

2 DEC 2021

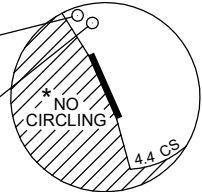
ATIS 113.0 131.1	APP 118.4 (AS ADVISED)	TWR 124.9	SMC 121.7		Bearings are Magnetic Elevations in FEET AMSL
---------------------	------------------------------	--------------	--------------	--	--



DME USING CS DME REFERENCE WAYPOINT CS VOR

CS ---
NDB 364

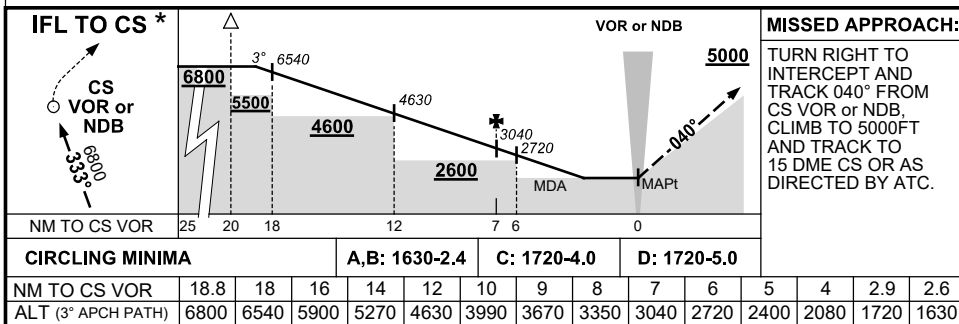
CS ---
VOR/DME 113.0



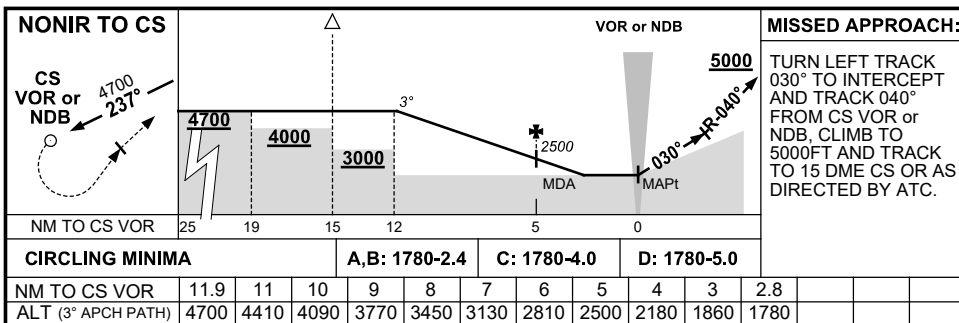
* 1. NO CIRCLING WEST OF RWY 15/33 OR BEYOND 4.4 DME TO THE SOUTH.

10 NM MSA 5600

AD ELEV 10



* NOTE : STRAIGHT-IN LDG RWY 33 NOT AVAILABLE UNLESS VISUAL BY 10 DME - DESC GRADIENT TO THR 345FT/NM.



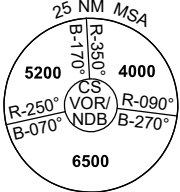
LIMITATION : 185KT IAS MAX UNTIL ESTABLISHED ON R-040° CS VOR OR NDB.

CAUTION : DO NOT DELAY TURN ONTO 030° DUE TO HIGH TERRAIN WEST OF MISSED APPROACH AREA.

DME or GNSS ARRIVAL PROCEDURES CAIRNS/CAIRNS INTL, QLD (YBCS) Page 2

2 DEC 2021

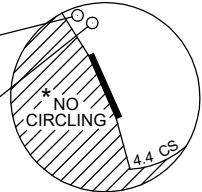
ATIS 113.0 131.1	APP 118.4 126.1 (AS ADVISED)	TWR 124.9	SMC 121.7		Bearings are Magnetic Elevations in FEET AMSL
---------------------	------------------------------------	--------------	--------------	--	--



**DME USING CS DME
REFERENCE WAYPOINT CS VOR**

CS --- ---
NDB 364

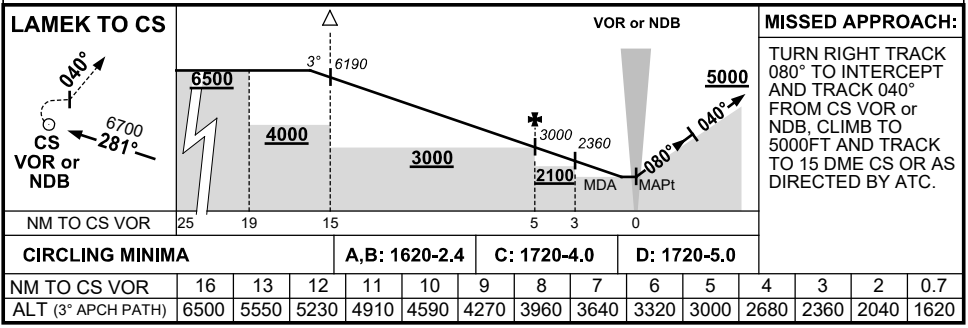
CS --- ---
VOR/DME 113.0



* 1. NO CIRCLING WEST OF RWY 15/33 OR BEYOND 4.4 DME TO THE SOUTH.

10 NM MSA 5600

AD ELEV 10



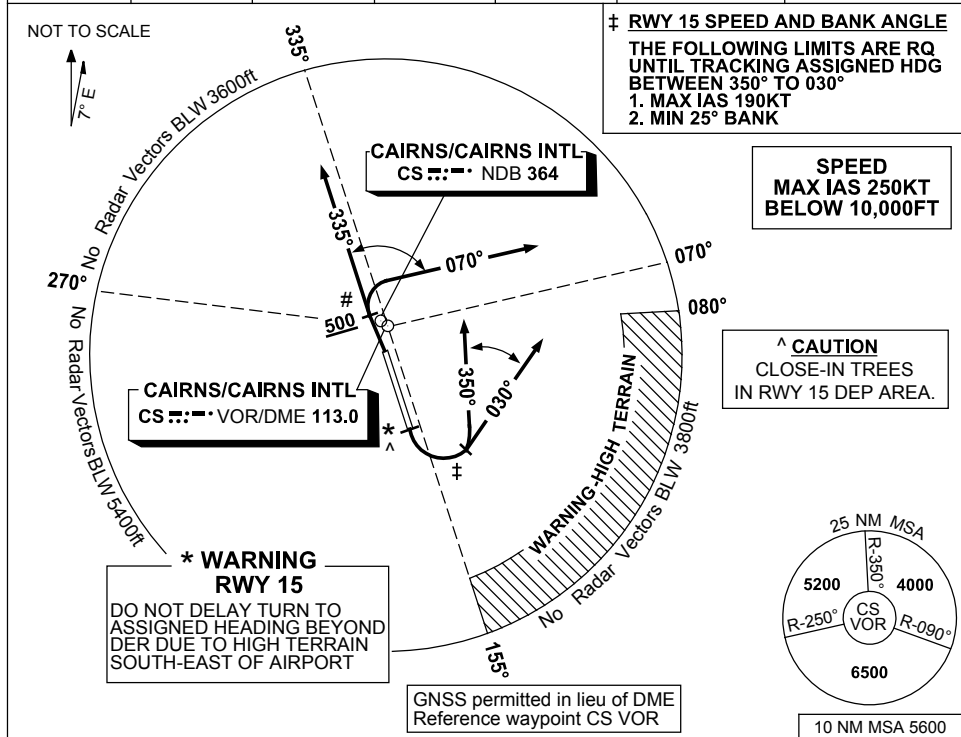
LIMITATION : 185KT IAS MAX UNTIL ESTABLISHED ON R-040° CS VOR OR NDB.

CAUTION : DO NOT DELAY TURN ONTO 080° DUE TO HIGH TERRAIN WEST OF MISSED APPROACH AREA.

**STANDARD INSTRUMENT DEPARTURES (SID)
CAIRNS TWO DEPARTURE (RADAR)
CAIRNS/CAIRNS INTL, QLD (YBCS)**

13 JUN 2024

ATIS 113.0 131.1	ACD 128.75	SMC 121.7	TWR 124.9	DEP 118.4	DEP 126.1 (AS ADVISED)	Bearings are Magnetic Elevations in FEET AMSL
---------------------	---------------	--------------	--------------	--------------	---------------------------	--



<p>CAIRNS TWO DEPARTURE (RADAR)</p> <p>RWY 15</p> <ul style="list-style-type: none"> • GRAD 4% to 600ft then 3.3% • Track 150° * At the earlier of 400ft or DER (2.6 DME) turn LEFT to assigned heading (between 350° to 030°) • When directed, contact departures for radar vectors 		<p>RWY 33</p> <ul style="list-style-type: none"> # • MAX IAS 220KT • GRAD 4.6% to 2000ft then 3.3% • Track 330° • AT or ABV 500ft, but not before DER, turn to assigned heading (between 335° to 070°) • When directed, contact departures for radar vectors
--	--	--

COMMUNICATIONS FAILURE PROCEDURE

On recognition of communications failure

- Squawk 7600
- Maintain last assigned vector for two minutes and, if necessary, climb to minimum safe altitude to maintain terrain clearance, then
- Proceed in accordance with the latest ATC route clearance acknowledged

Changes: CAUTION NOTE.

BCSDP02-179

STANDARD INSTRUMENT DEPARTURE (SID)
RWY 15 AKROM ONE (JET)
CAIRNS/CAIRNS INTL, QLD (YBCS)

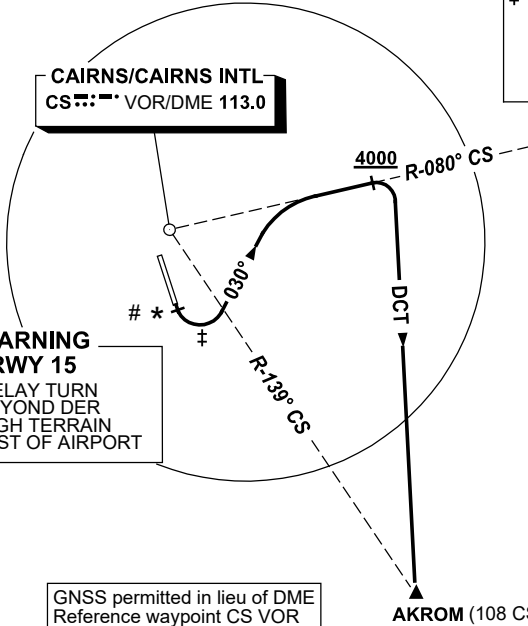
13 JUN 2024

ATIS 113.0 131.1	ACD 128.75	SMC 121.7	TWR 124.9	DEP 118.4	DEP 126.1 (AS ADVISED)	Bearings are Magnetic Elevations in FEET AMSL
---------------------	---------------	--------------	--------------	--------------	---------------------------	--

NOT TO SCALE



CAIRNS/CAIRNS INTL
CS VOR/DME 113.0

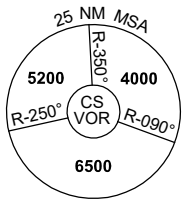


‡ **SPEED AND BANK ANGLE**
THE FOLLOWING LIMITS ARE
RQ UNTIL TRACKING 030°
1. MAX IAS 190KT
2. MIN 25° BANK

SPEED
MAX IAS 250KT
BELOW 10,000FT

CAUTION
CLOSE-IN TREES
IN RWY 15 DEP AREA.

* **WARNING**
RWY 15
DO NOT DELAY TURN
TO 030° BEYOND DER
DUE TO HIGH TERRAIN
SOUTH-EAST OF AIRPORT



GNSS permitted in lieu of DME
Reference waypoint CS VOR

10 NM MSA 5600

AKROM ONE DEPARTURE

- GRAD 4% to 600ft then 3.3%.
- Track 150°
- * At the earlier of 400ft or DER (2.6 CS DME) turn LEFT track 030°
- Intercept CS R-080°
- When established on CS R-080° and AT or ABV 4000ft turn RIGHT
- Track DCT to AKROM and then as cleared

Changes: CAUTION NOTE.

BCSDP03-179

**STANDARD INSTRUMENT DEPARTURE (SID)
RWY 15 NONUM ONE (NON-JET)
CAIRNS/CAIRNS INTL, QLD (YBCS)**

13 JUN 2024

ATIS 113.0 131.1	ACD 128.75	SMC 121.7	TWR 124.9	DEP 118.4	DEP 126.1 (AS ADVISED)	Bearings are Magnetic Elevations in FEET AMSL
---------------------	---------------	--------------	--------------	--------------	---------------------------	--

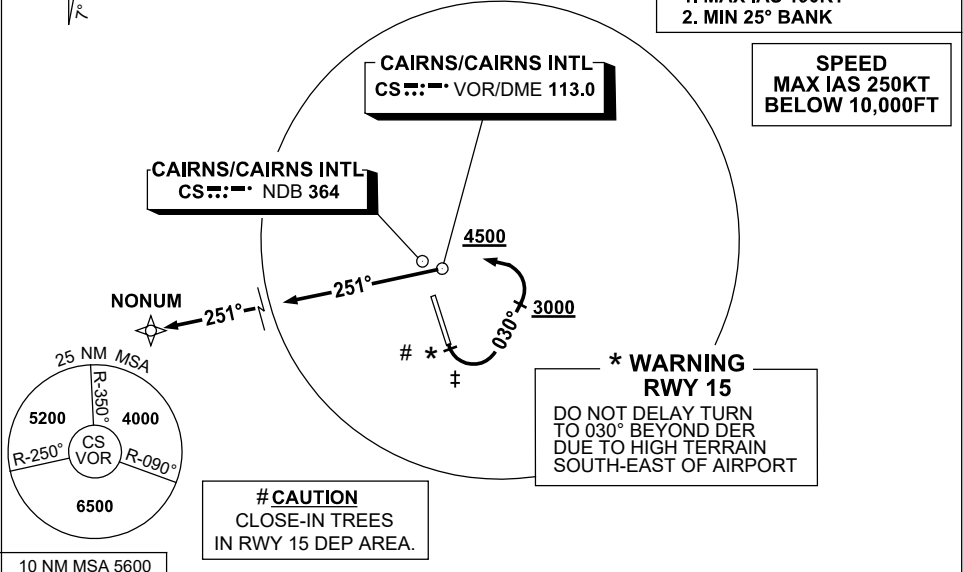
NOT TO SCALE



GNSS permitted in lieu of DME
Reference waypoint CS VOR

‡ **SPEED AND BANK ANGLE**
THE FOLLOWING LIMITS ARE
RQ UNTIL TRACKING 030°
1. MAX IAS 190KT
2. MIN 25° BANK

SPEED
MAX IAS 250KT
BELOW 10,000FT



NONUM ONE DEPARTURE

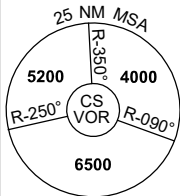
- GRAD 4% to 600ft then 3.3%
 - Track 150°
 - * At the earlier of 400ft or DER (2.6 CS DME) turn LEFT track 030°
 - AT or ABV 3000ft turn LEFT
 - Track to CS VOR/NDB
- Requirement: reach 4500ft by CS VOR/NDB
- Track 251° to NONUM

STANDARD INSTRUMENT DEPARTURES (SID)
RWY 33 EAZEE THREE (JET)
CAIRNS/CAIRNS INTL, QLD (YBCS)

30 NOV 2023

ATIS 113.0 131.1	ACD 128.75	SMC 121.7	TWR 124.9	DEP 118.4	DEP 126.1 (AS ADVISED)	Bearings are Magnetic Elevations in FEET AMSL
---------------------	---------------	--------------	--------------	--------------	---------------------------	--

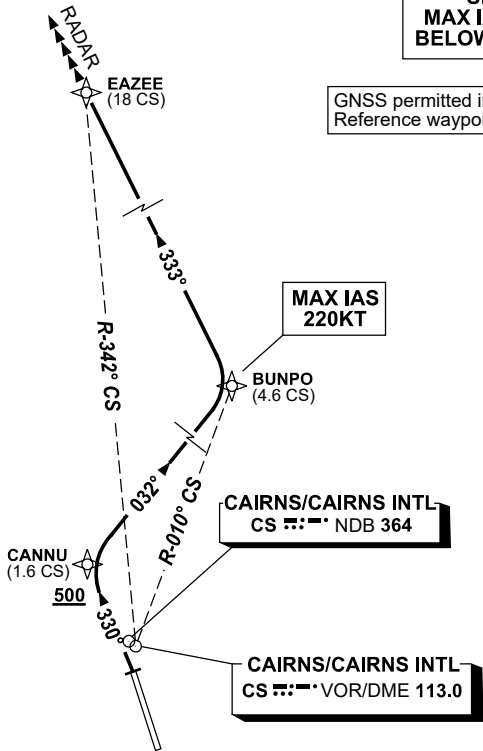
NOT TO SCALE



10 NM MSA 5600

**SPEED
MAX IAS 250KT
BELOW 10,000FT**

GNSS permitted in lieu of DME
Reference waypoint CS VOR



RWY 33 EAZEE THREE

- GRAD 4.6% TO 2000ft THENCE 3.3%
MAX IAS 220KT until BUNPO
- Track 330° to CANNU
Cross CANNU AT or ABV 500ft
- Turn RIGHT track 032° to BUNPO
- Turn LEFT, track 333° to EAZEE
- When directed Contact Departures

TRANSITION

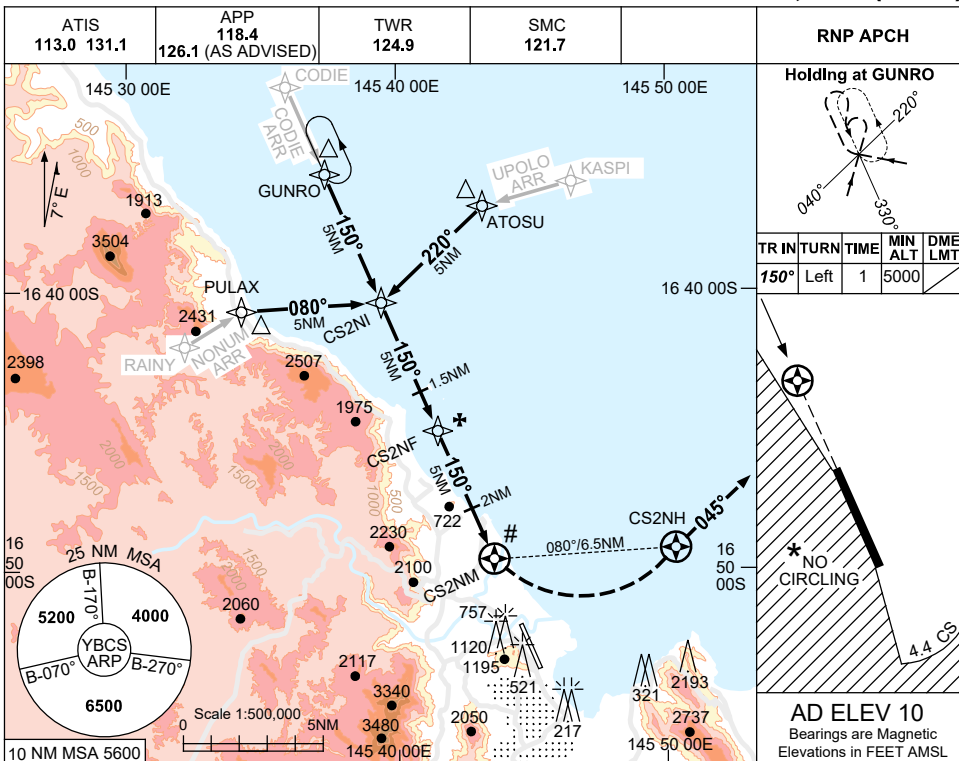
RADAR: • From EAZEE expect radar vectors
to cleared route

USE QNH

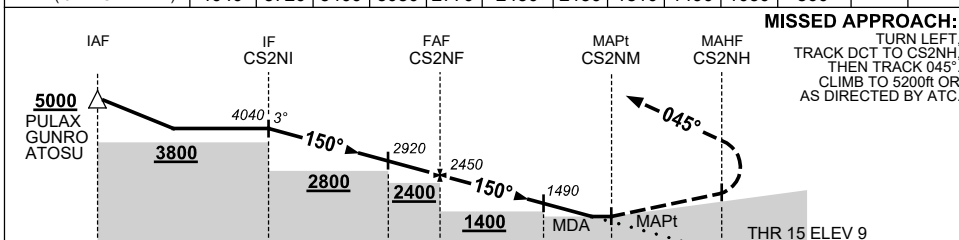
RNP Z RWY 15

20 MAR 2025

CAIRNS/CAIRNS INTL, QLD (YBCS)



NM TO NEXT WPT	CS2NI	4	3	2	1	CS2NF	4	3	2	0.5	CS2NM		
ALT (3° APCH PATH)	4040	3720	3400	3080	2770	2450	2130	1810	1490	1030	860		



NM TO CS2NM

NOTES

- # 1. MAX IAS:
INITIAL : 210KT.
MISSED APCH : 190KT.
TURN : 230KT.
HOLDING : 230KT.
- * 2. NO CIRCLING WEST OF RWY 15/ 33 OR BEYOND 4.4 DME TO THE SOUTH (2NM S OF THR RWY 33).
- ‡ 3. WITHOUT ILS, LOC & DME.
- 4. COLOUR: SEE SPEC NOTICES.

CATEGORY	A	B	C	D
LNAV (2.5% MAP)		1030 (1020-5.0)		
LNAV (4.0% MAP)		860 (850-4.0)		
CIRCLING *	1030 (1020-2.4)		1030(1020-4.0)	1230(1220-5.0)
ALTERNATE ‡	(1520-4.4)		(1520-6.0)	(1720-7.0)

Changes: WPT NAMING CONVENTION.

BCSGN01-182

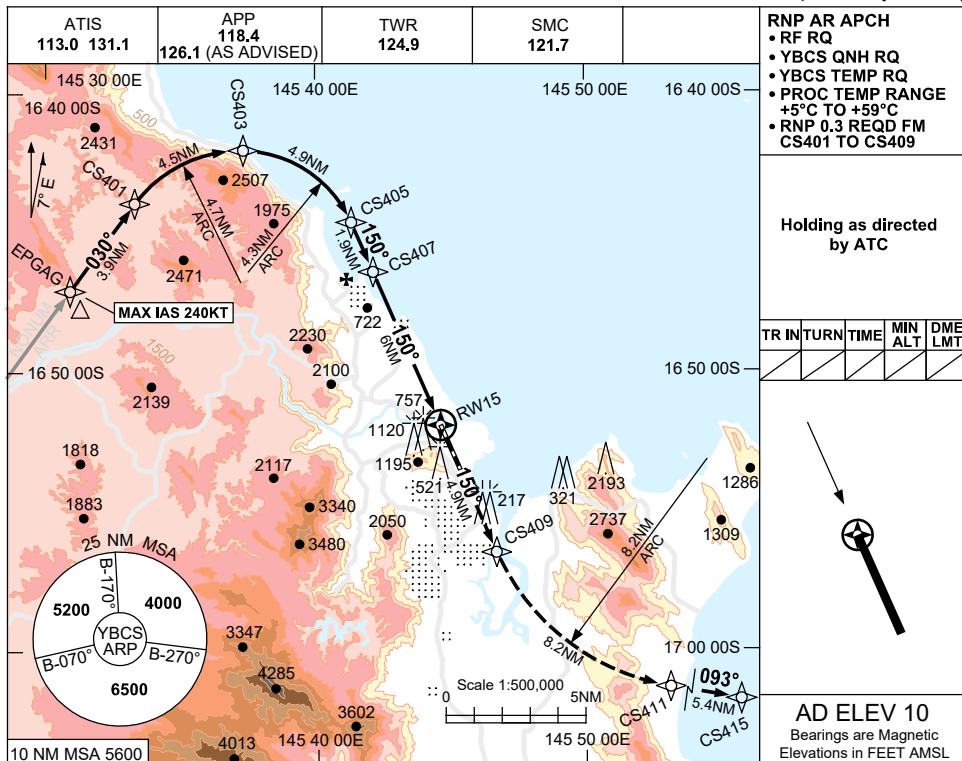
FOR CASA APPROVED OPERATORS ONLY

USE QNH

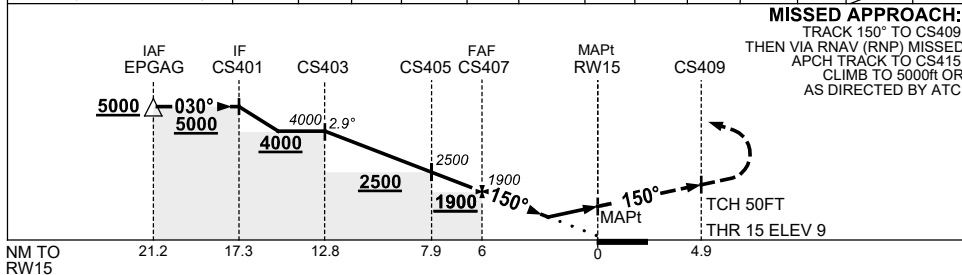
RNP W RWY 15 (AR)

20 MAR 2025

CAIRNS/CAIRNS INTL, QLD (YBCS)



NM TO NEXT WPT	CS403	3	1	CS405	1	CS407	5	4	2.5	2.1	2	RW15
ALT (2.9° APCH PATH)	4000	3420	2800	2500	2200	1900	1600	1290	840	700	680	



NOTES

1. MAX IAS:
INITIAL : 240KT.
2. MIN MAP GRAD 5%
TO 1000ft THEN 2.5%.
3. COLOUR: SEE
SPEC NOTICES.

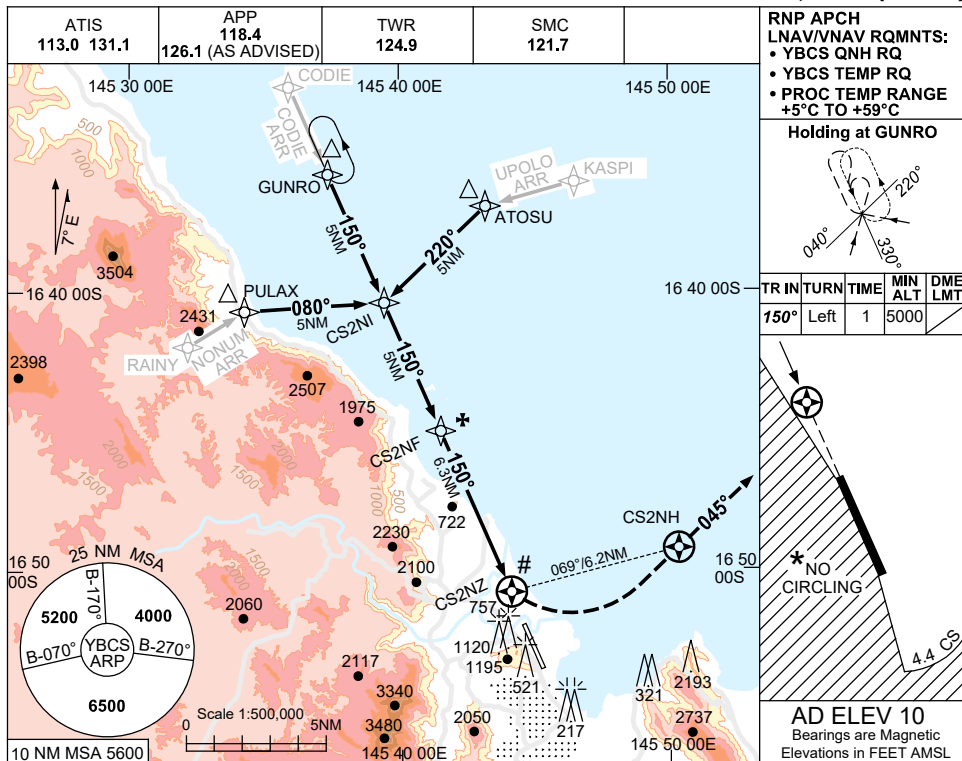
CATEGORY	A	B	C	D
RNP (0.3) (2.5% MAP)		830 (821-3.9)		840 (831-4.0)
± RNP (0.3) (5.0% MAP)		680 (671-3.0)		700 (691-3.2)
CIRCLING	NOT AUTHORISED			
ALTERNATE	(1520-4.4)		(1520-6.0)	(1720-7.0)

Changes: MINIMA, NOTES.

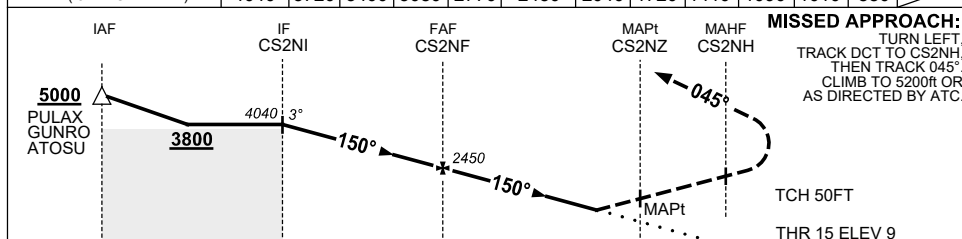
BCSGN02-182

USE QNH RNP Y RWY 15 (LNAV/VNAV ONLY) CAIRNS/CAIRNS INTL, QLD (YBCS)

20 MAR 2025



NM TO NEXT WPT	CS2NI	4	3	2	1	CS2NF	5	4	3	2	1.8	1.3	CS2NZ
ALT (3° APCH PATH)	4040	3720	3400	3080	2770	2450	2040	1720	1410	1090	1010	880	



NM TO CS2NZ: 16.3, 11.3, 6.3, 0, 1.2

THR 15 ELEV 9

- NOTES**
- # 1. MAX IAS: 210KT.
INITIAL : 210KT.
MISSED APCH : 190KT.
TURN : 190KT.
HOLDING : 230KT.
 - * 2. NO CIRCLING WEST OF RWY 15/ 33 OR BEYOND 4.4 DME TO THE SOUTH (2NM S OF THR RWY 33).
 - ‡ 3. WITHOUT ILS, LOC & DME.
 - 4. COLOUR: SEE SPEC NOTICES.

CATEGORY	A	B	C	D
LNAV/VNAV(2.5% MAP)		1010 (1001-4.8)		
LNAV/VNAV(4.0% MAP)		880 (871-4.1)		
CIRCLING *	1030 (1020-2.4)		1030(1020-4.0)	1230(1220-5.0)
ALTERNATE ‡	(1520-4.4)		(1520-6.0)	(1720-7.0)

Changes: WPT NAMING CONVENTION.

BCSGN03-182

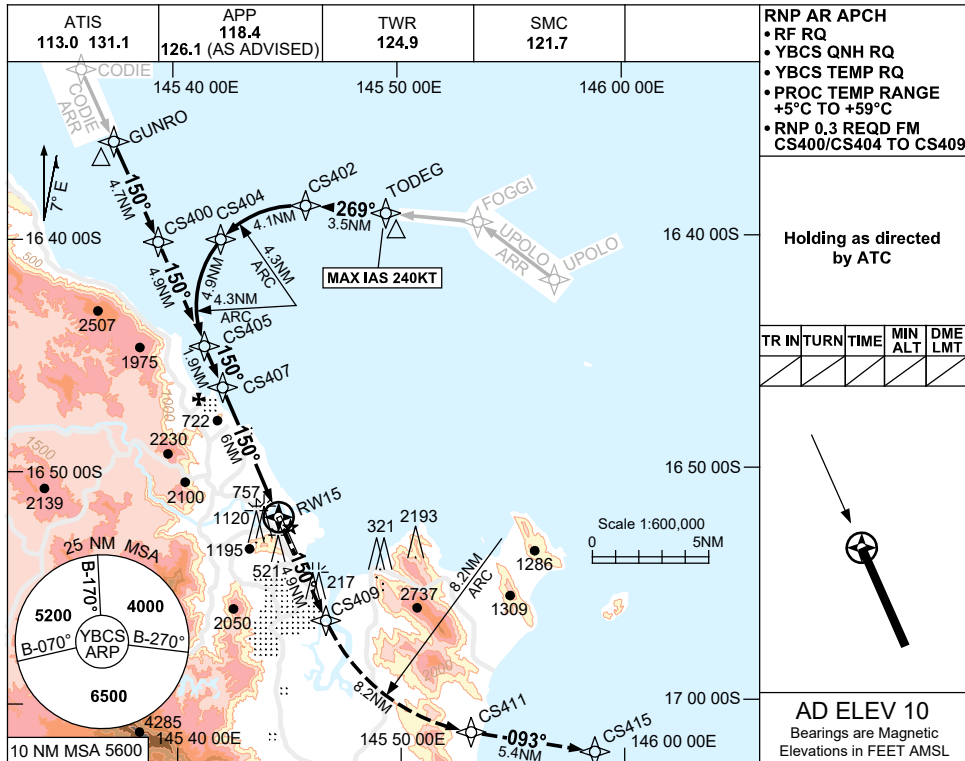
FOR CASA APPROVED OPERATORS ONLY

USE QNH

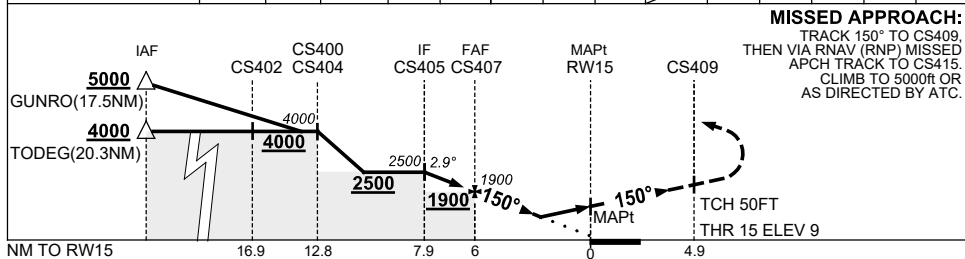
RNP X RWY 15 (AR)

20 MAR 2025

CAIRNS/CAIRNS INTL, QLD (YBCS)



NM TO NEXT WPT	CS405	1	CS407	5	4	2.5	2.1	2	RW15				
ALT (2.9° APCH PATH)	2500	2210	1900	1600	1290	840	700	680					



NOTES

CATEGORY	A	B	C	D
RNP (0.3) (2.5% MAP)		830 (821-3.9)		840 (831-4.0)
‡RNP (0.3) (5.0% MAP)		680 (671-3.0)		700 (691-3.2)
CIRCLING	NOT AUTHORISED			
ALTERNATE	(1520-4.4)		(1520-6.0) (1720-7.0)	

1. MAX IAS: TODREG : 240KT.
- ‡2. MIN MAP GRAD 5% TO 1000ft THEN 2.5%.
3. COLOUR: SEE SPEC NOTICES.

Changes: MINIMA, NOTES.

BCSGN04-182

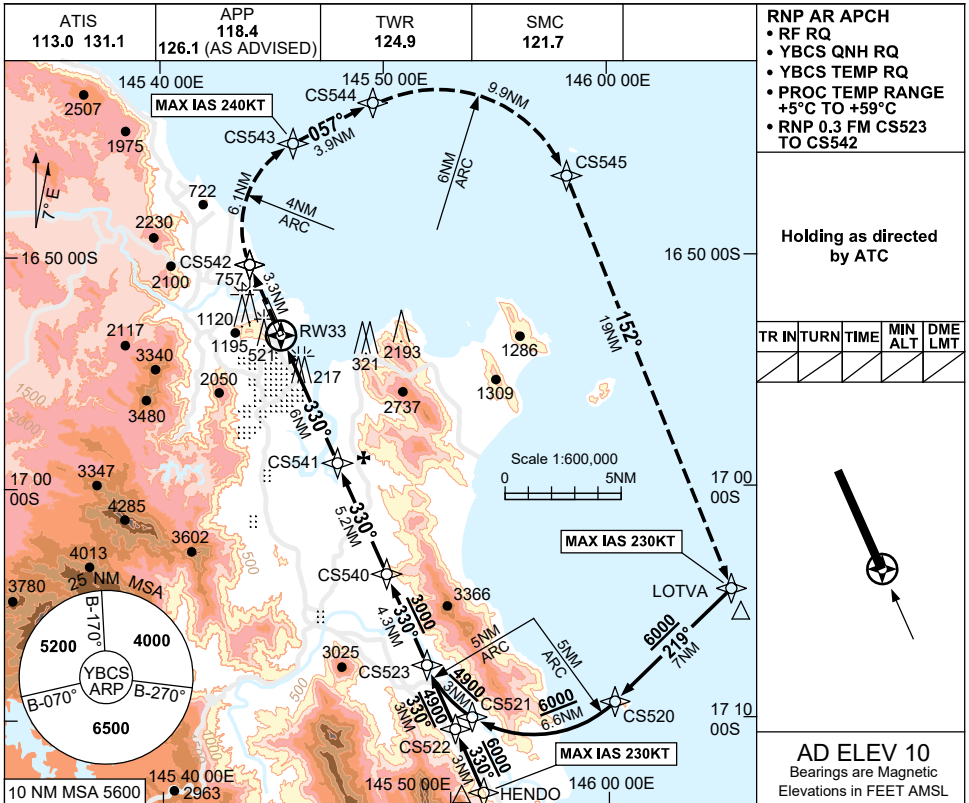
FOR CASA APPROVED OPERATORS ONLY

USE QNH

RNP Y RWY 33 (AR)

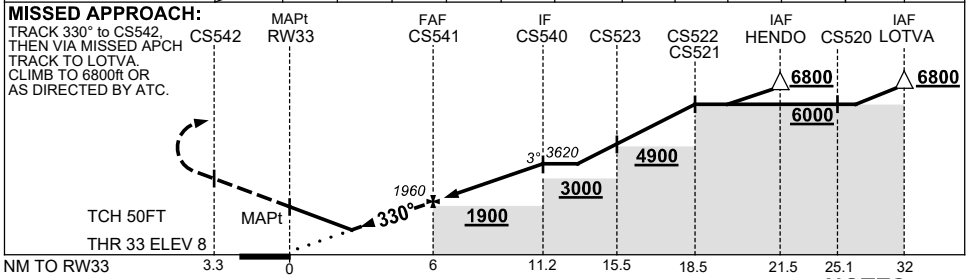
20 MAR 2025

CAIRNS/CAIRNS INTL, QLD (YBCS)



AD ELEV 10
Bearings are Magnetic
Elevations in FEET AMSL

NM TO NEXT WPT	RW33	1.9	2.4	3	4	5	CS541	1	2	3	CS540		
ALT (3° APCH PATH)		670	840	1010	1330	1650	1960	2280	2600	2920	3620		



NOTES

CATEGORY	A	B	C	D
RNP (0.3) (2.5% MAP)		830 (822-4.7)		840 (832-4.8)
RNP (0.3) (5.0% MAP)		670 (662-3.8)		690 (682-3.9)
CIRCLING *	NOT AUTHORISED			
ALTERNATE	(1520-4.4)		(1520-6.0)	(1720-7.0)

- MAX IAS:
INITIAL : 230KT
MAP UNTIL
CS543 : 240KT
- COLOUR: SEE SPEC NOTICES.

Changes: MINIMA, NOTES, NO CIRCLING DEPICTION REMOVED, Editorial. BCSGN05-182

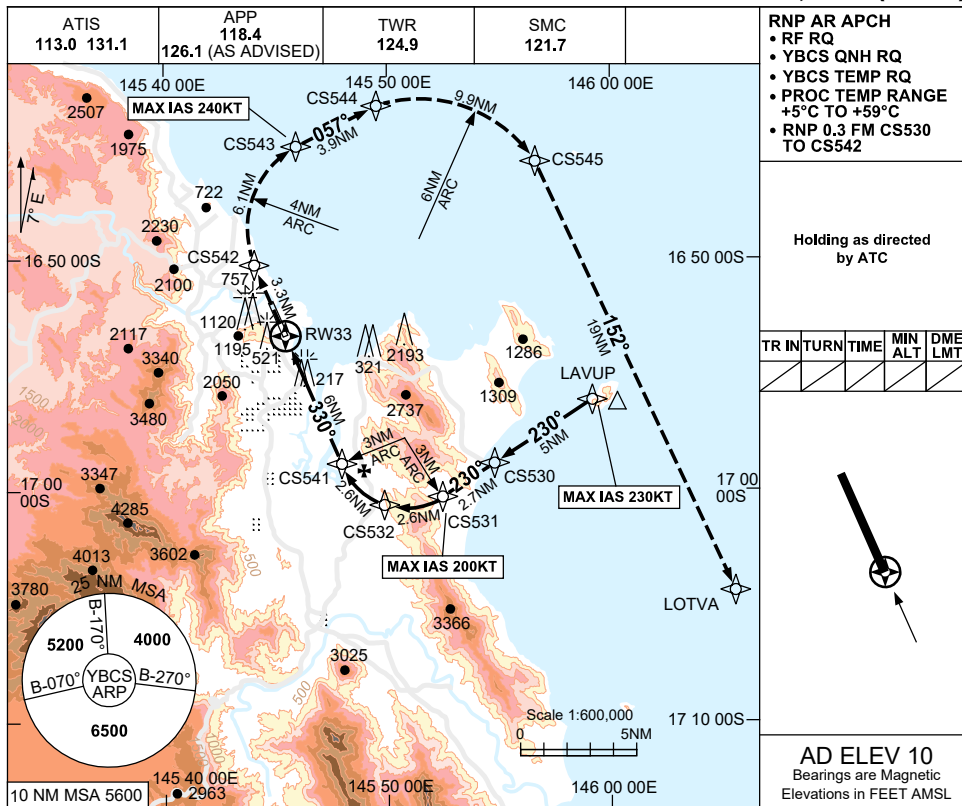
FOR CASA APPROVED OPERATORS ONLY

USE QNH

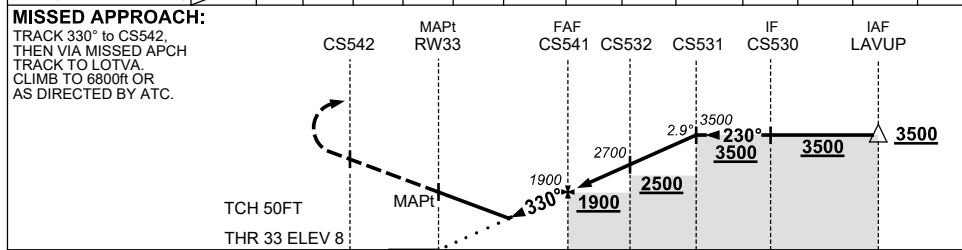
RNP X RWY 33 (AR)

20 MAR 2025

CAIRNS/CAIRNS INTL, QLD (YBCS)



NM TO NEXT WPT	RW33	2	2.5	3	4	5	CS541	1	2	CS532	1	2	CS531	
ALT (2.9° APCH PATH)		670	830	980	1290	1600	1900	2210	2520	2700	3010	3320	3500	



CATEGORY	A	B	C	D
RNP (0.3) (2.5% MAP)		820 (812-4.8)		830 (822-4.9)
RNP (0.3) (5.0% MAP)		670 (662-3.9)		680 (672-4.0)
CIRCLING *	NOT AUTHORISED			
ALTERNATE	(1520-4.4)		(1520-6.0)	(1720-7.0)

- MAX IAS:
INITIAL : 230KT.
CS531 : 200KT.
MAP UNTIL
CS543 : 240KT
- COLOUR: SEE SPEC NOTICES.

Changes: MINIMA, NOTES, NO CIRCLING DEPICTION REMOVED, Editorial.

BCSGN06-182

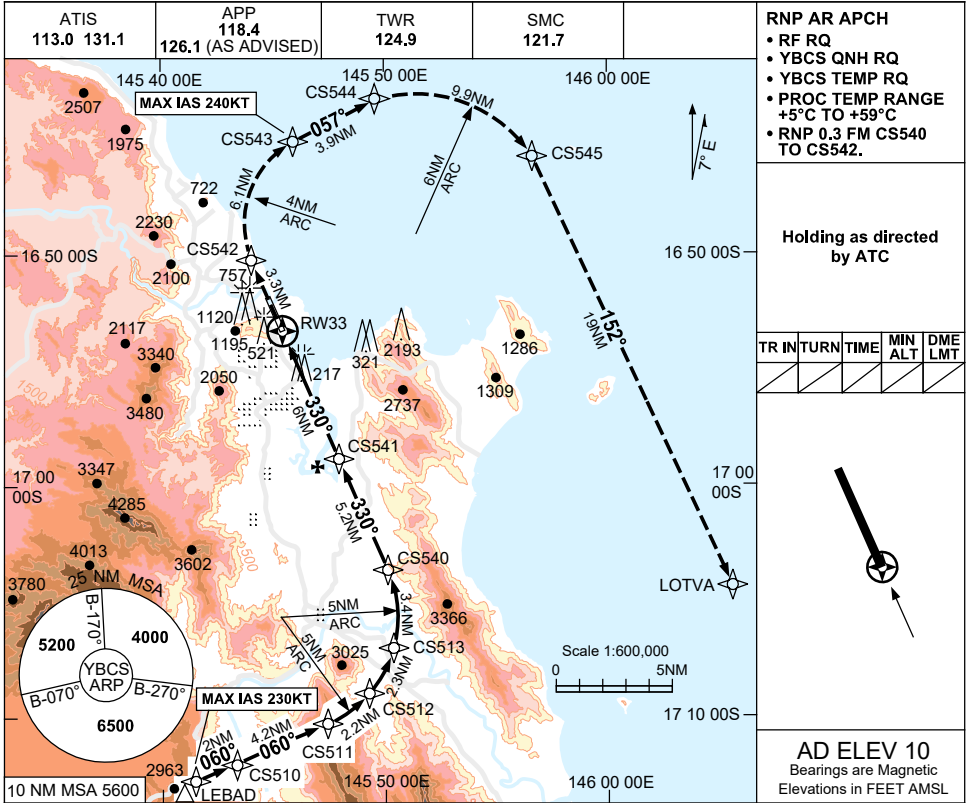
FOR CASA APPROVED OPERATORS ONLY

USE QNH

RNP W RWY 33 (AR)

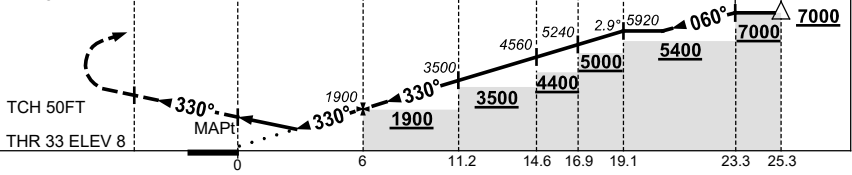
20 MAR 2025

CAIRNS/CAIRNS INTL, QLD (YBCS)



NM TO NEXT WPT	RW33	2	2.5	3	4	5	CS541	2	CS540	2	CS513	CS512	CS511
ALT (2.9° APCH PATH)		670	830	980	1290	1600	1900	2520	3500	4120	4560	5240	5920

MISSED APPROACH:
 TRACK 330° to CS542
 THEN VIA MISSED APCH
 TRACK TO LOTVA.
 CLIMB TO 6800ft OR
 AS DIRECTED BY ATC.



NOTES

1. MAX IAS:
 INITIAL : 230KT
 MAP UNTIL
 CS543 : 240KT
2. COLOUR: SEE
 SPEC NOTICES.

CATEGORY	A	B	C	D
RNP (0.3)(2.5% MAP)		820 (812-4.8)		830 (822-4.9)
RNP (0.3)(5.0% MAP)		670 (662-3.9)		680 (672-4.0)
CIRCLING *	NOT AUTHORISED			
ALTERNATE	(1520-4.4)		(1520-6.0)	(1720-7.0)

Changes: MINIMA, NOTES, NO CIRCLING DEPICTION REMOVED, Editorial. BCSGN07-182

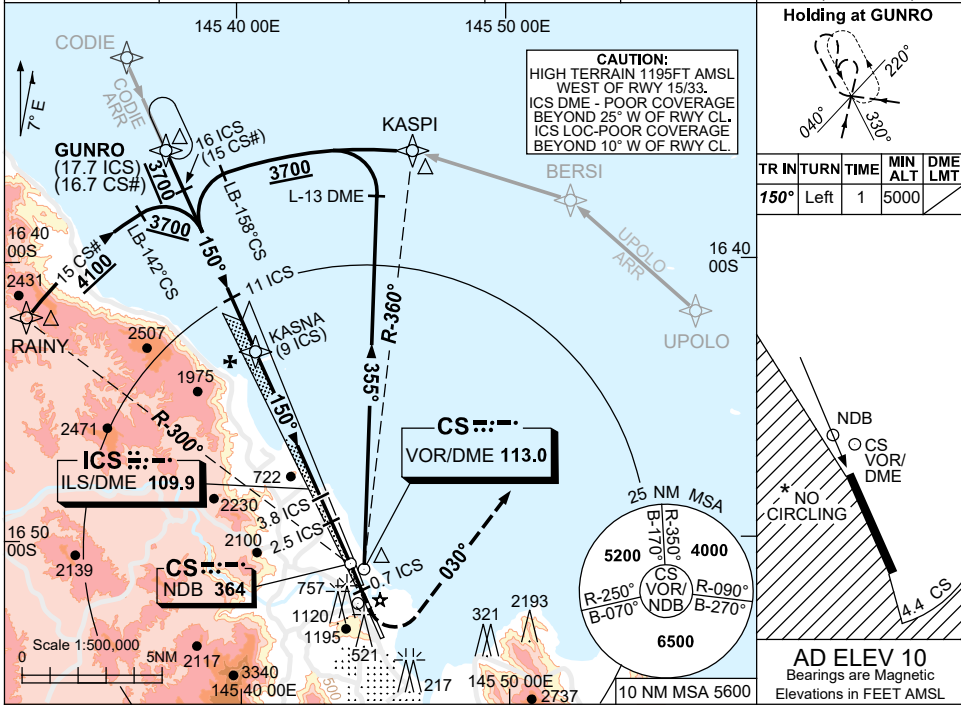
USE QNH

ILS-Y or LOC-Y RWY 15

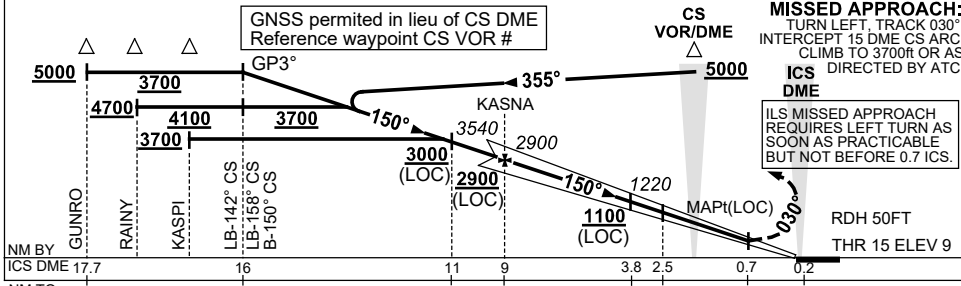
5 SEP 2024

CAIRNS/CAIRNS INTL, QLD (YBCS)

ATIS 113.0 131.1	APP 118.4 (AS ADVISED)	TWR 124.9	SMC 121.7	NAVAID RQ: • DME or GNSS (ILS) • DME (LOC ONLY)
---------------------	------------------------------	--------------	--------------	---



DIST TO ICS DME	15.6	14.6	13	11.5	11	9	8	7	6	5	3.8	3	2.5
ALT (3° APCH PATH)	5000	4700	4180	3700	3540	2900	2570	2250	1930	1610	1220	970	790



NM BY													
ICS DME 17.7		16		11	9			3.8	2.5		0.7		0.2
NM TO THR 15	17.5	15.9		10.9	8.8			3.6	2.3		0.5		0

CATEGORY	A	B	C	D
S-I ILS (4.0% MAP)	390 (381)	1.2	NOT APPLICABLE	
S-I ILS (2.5% MAP)	470 (461)	1.7		
S-I LOC	790 (781-3.6)			
CIRCLING*	790 (780-2.4)			
ALTERNATE	(1280-4.4)			

NOTES

- NO CIRCLING WEST OF RWY 15/33 OR BEYOND 4.4 CS DME TO THE SOUTH.
- ACFT MAY BE RADAR VECTORED TO 15 ICS DME FINAL AT 3700FT.
- COLOR: SEE SPEC NOTICES.

Changes: MM REMOVED, Editorial.

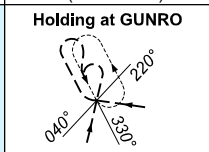
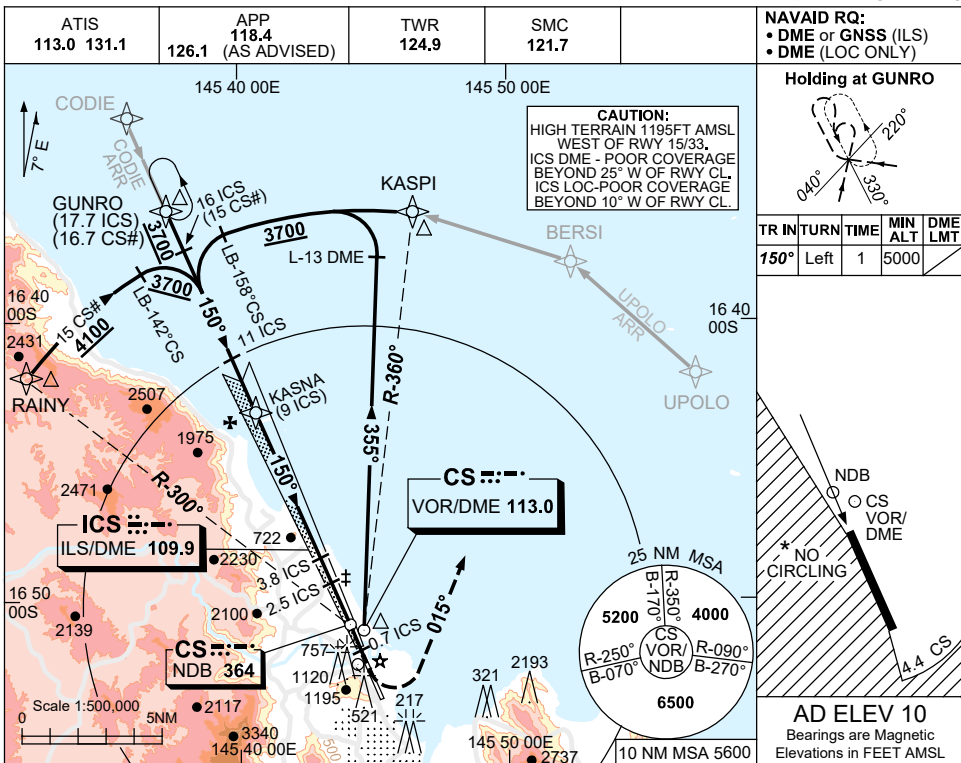
BCSII03-180

USE QNH

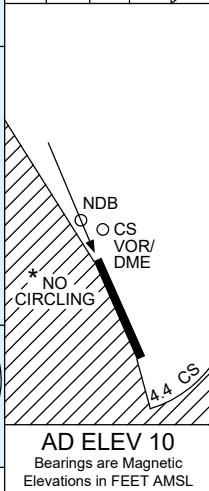
ILS-Z or LOC-Z RWY 15

5 SEP 2024

CAIRNS/CAIRNS INTL, QLD (YBCS)

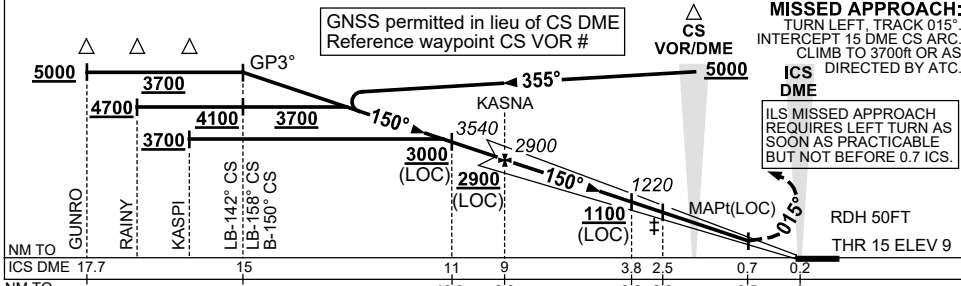


TR IN	TURN	TIME	MIN ALT	DME LMT
150°	Left	1	5000	



AD ELEV 10
Bearings are Magnetic
Elevations in FEET AMSL

NM TO ICS DME	15.6	14.6	13	11.5	11	9	8	7	6	5	3.8	3	2.5
ALT (3° APCH PATH)	5000	4700	4180	3700	3540	2900	2570	2250	1930	1610	1220	970	790



NM TO	ICD DME	17.7	15	11	9	3.8	2.5	0.7	0.2
NM TO THR 15		17.5	15.9	10.9	8.8	3.6	2.3	0.5	0

CATEGORY	A	B	C	D
S-I ILS (4.0% MAP)	NOT APPLICABLE		400 (391) 1.3	
S-I ILS (2.5% MAP)			470 (461) 1.7	
S-I LOC			790 (781-3.6)	
CIRCLING *			790 (780-4.0) 1230 (1220-5.0)	
ALTERNATE			(1280-6.0)	(1720-7.0)

- NOTES**
- NO CIRCLING WEST OF RWY 15/33 OR BEYOND 4.4 CS DME TO THE SOUTH.
 - MAX IAS 180KT FM 1000FT ON FNA TIL TR 015° IN MISSED APCH.
 - ACFT MAY BE RADAR VECTORED TO 14 ICS DME FINAL AT 3700FT.
 - COLOUR: SEE SPEC NOTICES.

Changes: MM REMOVED, Editorial.

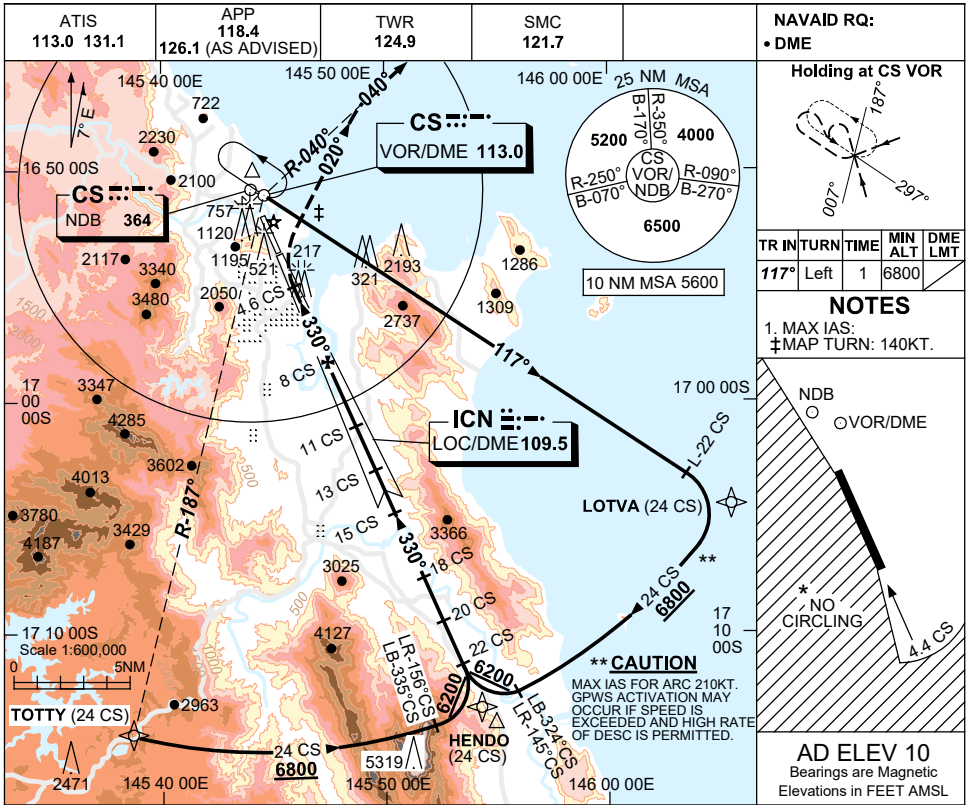
BCSI104-180

USE QNH

LOC-W RWY 33

30 NOV 2023

CAIRNS/CAIRNS INTL, QLD (YBCS)



NAVAID RQ:
• DME

Holding at CS VOR

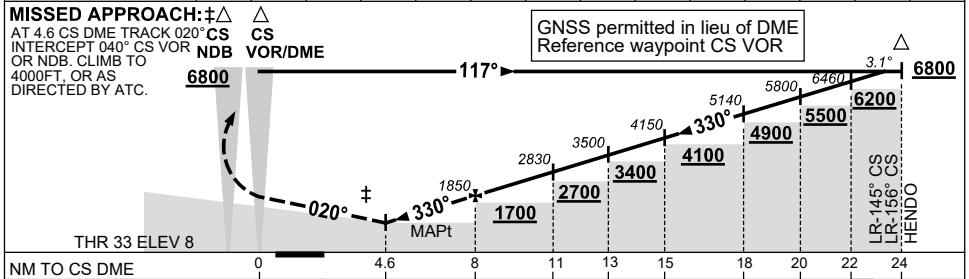
TR IN	TURN	TIME	MIN ALT	DME LMT
117°	Left	1	6800	

NOTES

1. MAX IAS:
‡MAP TURN: 140KT.

AD ELEV 10
Bearings are Magnetic
Elevations in FEET AMSL

DIST TO CS DME	4.6	5	6	7	8	9	10	11	13	15	18	20	22	23.1
ALT (3.1° APCH PATH)	730	860	1190	1520	1850	2180	2510	2830	3500	4150	5140	5800	6460	6800



NM TO CS DME	0	4.6	8	11	13	15	18	20	22	24
NM TO RWY 33 THR	0	2	5.4	10.4						

CATEGORY	A	B	C	D
S-I LOC	730 (720-4.1)		NOT APPLICABLE	
CIRCLING*	730 (720-2.4)			
ALTERNATE	(1220-4.4)			

NOTES

*2. NO CIRCLING WEST OF RWY 15/33 OR BEYOND 4.4 DME TO THE SOUTH.

3. COLOUR: SEE SPEC NOTICES.

4. USE OF LOC RESTR: W OF RWY CL-WI 30°.

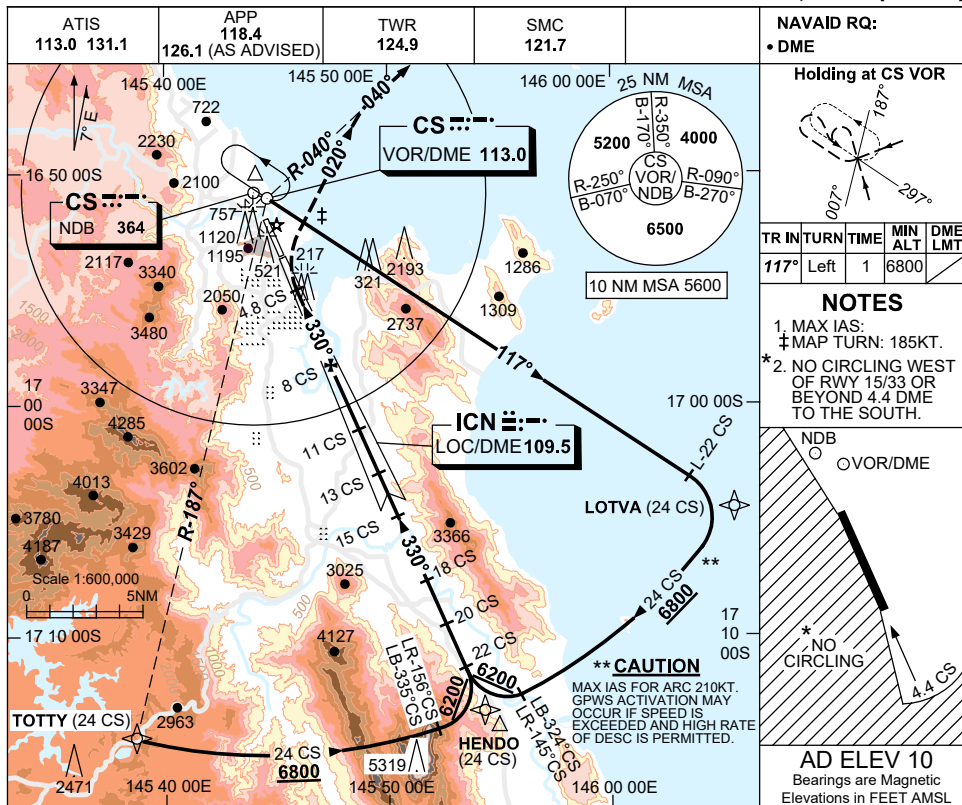
Changes: LOTVA REPLACES BASIL, Editorial. BCSLZ01-177

USE QNH

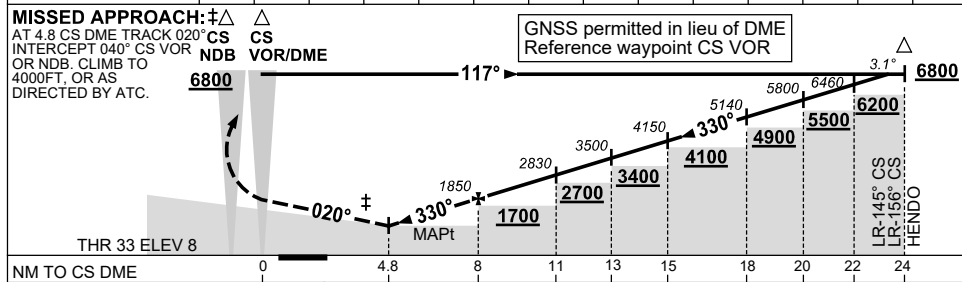
LOC-X RWY 33

30 NOV 2023

CAIRNS/CAIRNS INTL, QLD (YBCS)



DIST TO CS DME	4.8	6	7	8	9	10	11	13	15	18	20	22	23.1	
ALT (3.1° APCH PATH)	800	1190	1520	1850	2180	2510	2830	3500	4150	5140	5800	6460	6800	



NM TO CS DME	0	4.8	8	11	13	15	18	20	22	24
NM TO RWY 33 THR	0	2.2	5.4	10.4						

CATEGORY	A	B	C	D
S-I LOC	NOT APPLICABLE		800 (790-4.5)	
CIRCLING *			800 (790-4.0)	1230 (1220-5.0)
ALTERNATE			(1290-6.0)	(1720-7.0)

- NOTES**
- COLOUR: SEE SPEC NOTICES.
 - USE OF LOC RESTR: W OF RWY CL-WI 30°.

Changes: LOTVA REPLACES BASIL, Editorial.

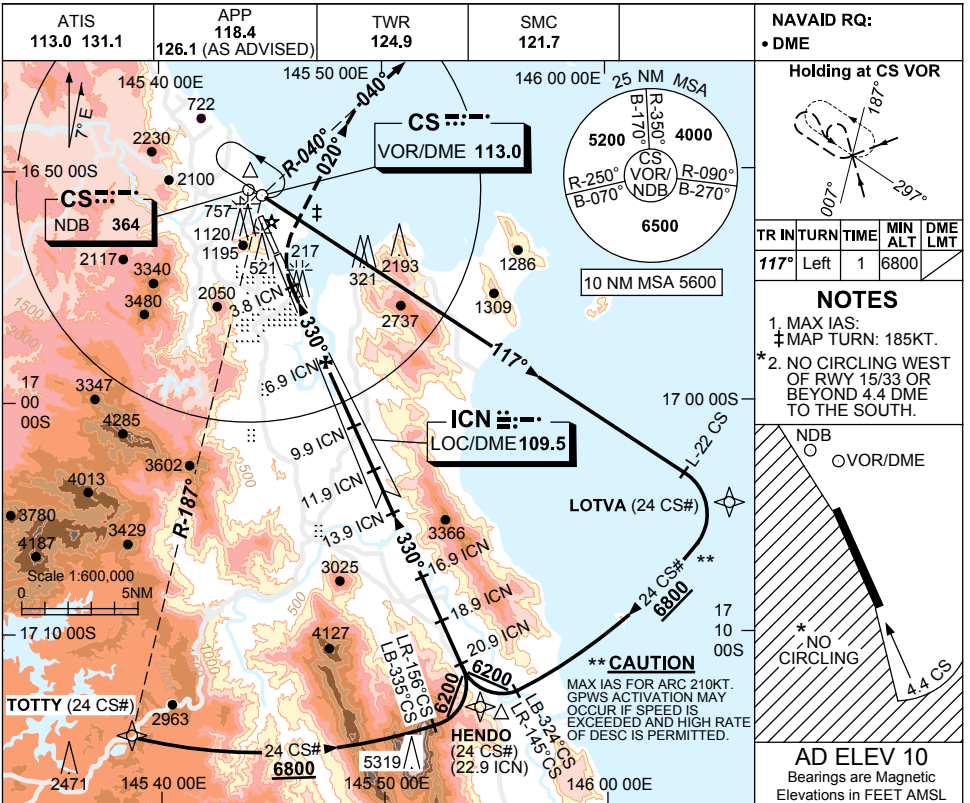
BCSLZ02-177

USE QNH

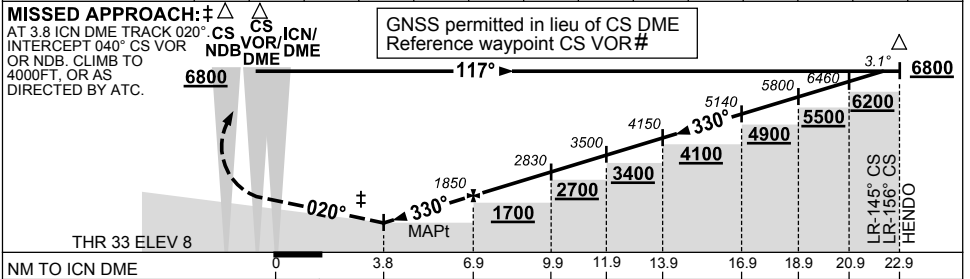
LOC-Z RWY 33

28 NOV 2024

CAIRNS/CAIRNS INTL, QLD (YBCS)



DIST TO ICN DME	3.8	4.1	5	6	6.9	8	9	9.9	11.9	13.9	16.9	18.9	20.9	22
ALT (3.1° APCH PATH)	800	910	1210	1530	1850	2190	2520	2830	3500	4150	5140	5800	6460	6800



NM TO ICN DME	0	3.8	6.9	9.9	11.9	13.9	16.9	18.9	20.9	22.9
NM TO RWY 33 THR	0	2.2	5.4	10.4						

CATEGORY	A	B	C	D
S-I LOC	NOT APPLICABLE		800 (790-4.5)	
CIRCLING *	NOT APPLICABLE		800 (790-4.0)	1230 (1220-5.0)
ALTERNATE	NOT APPLICABLE		(1290-6.0)	(1720-7.0)

- NOTES**
- COLOUR: SEE SPEC NOTICES.
 - USE OF LOC RESTR: W OF RWY CL-WI 30'.

Changes: Editorial.

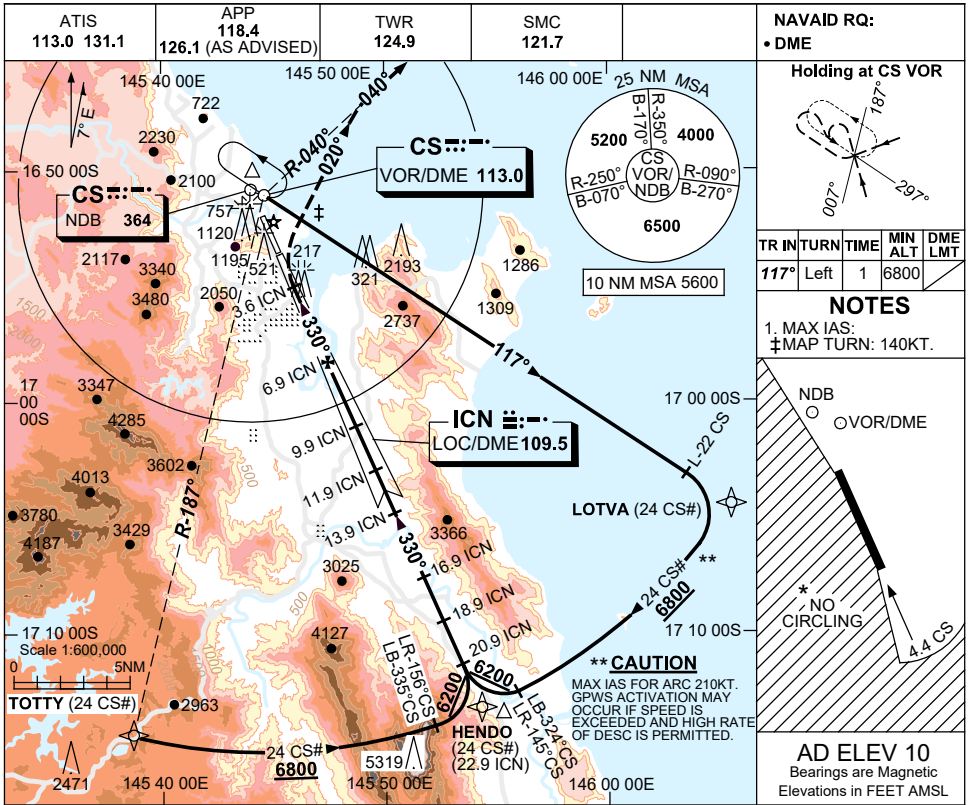
BCSLZ03-181

USE QNH

LOC-Y RWY 33

30 NOV 2023

CAIRNS/CAIRNS INTL, QLD (YBCS)

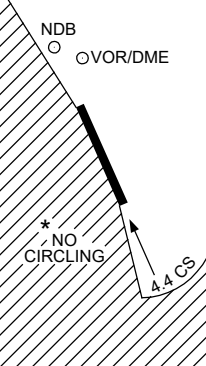


NAVAID RQ:
• DME

Holding at CS VOR

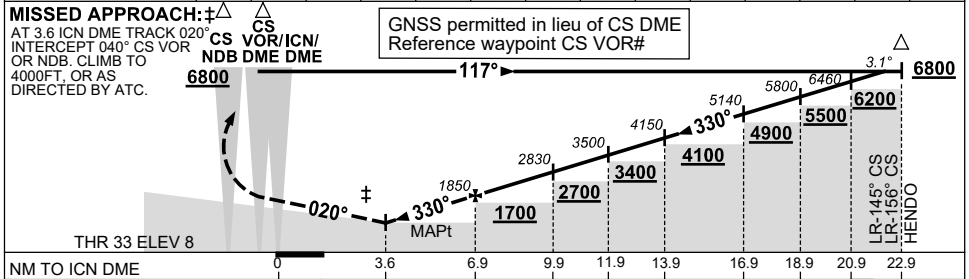
TR	IN	TURN	TIME	MIN ALT	DME LMT
117°	Left	1	6800		

NOTES
1. MAX IAS:
±MAP TURN: 140KT.



AD ELEV 10
Bearings are Magnetic
Elevations in FEET AMSL

DIST TO ICN DME	3.6	5	6	6.9	8	9	9.9	11.9	13.9	16.9	18.9	20.9	22	
ALT (3.1° APCH PATH)	730	1210	1530	1850	2190	2520	2830	3500	4150	5140	5800	6460	6800	



NOTES

- *2. NO CIRCLING WEST OF RWY 15/33 OR BEYOND 4.4 DME TO THE SOUTH.
- 3. COLOUR: SEE SPEC NOTICES.
- 4. USE OF LOC RESTR: W OF RWY CL-WI 30°.

CATEGORY	A	B	C	D
S-I LOC	730 (720-4.1)		NOT APPLICABLE	
CIRCLING*	730 (720-2.4)			
ALTERNATE	(1220-4.4)			

Changes: LOTVA REPLACES BASIL, Editorial. BCSLZ04-177

NOISE ABATEMENT PROCEDURES

CAIRNS

1 - PREFERRED RUNWAYS

- 1.1 **Landing** - Runway 15
- 1.2 **Take-off** - Runway 15-Jet Noise Abatement climb procedures apply

Note: Intersection departures runways 15 and 33 are not permitted 2300-0600 local time by aircraft exceeding 23,000KG MTOW

2 - PREFERRED FLIGHT PATHS

2.1 Arriving Aircraft

Aircraft will be routed clear of populous areas until seawards of the coastline or established on their final approach course. To assist with noise reduction on final approach course, pilots are requested to delay flap deployment until as late as is operationally practicable.

- (a) **Landing Runway 15.** Expect to be tracked via STAR. When VMC exists below 3,000FT by day, aircraft of 136,000KG MTOW or below will be cleared to manoeuvre visually from BENJI to cross the coast at the mouth of Richter's Creek: via the "Creek Corridor", as depicted in Figure 1.
- (b) **Landing Runway 33.** Expect to be tracked via a RWY 33 LOC approach, or if weather conditions are suitable, join a visual right circuit seawards of the coastline.

2.2 Departing Aircraft-Jets.

Follow the requirements of the Standard Instrument Departure and then be routed clear of populous areas.

3 - TRAINING FLIGHTS (See AIP/ERSA also)

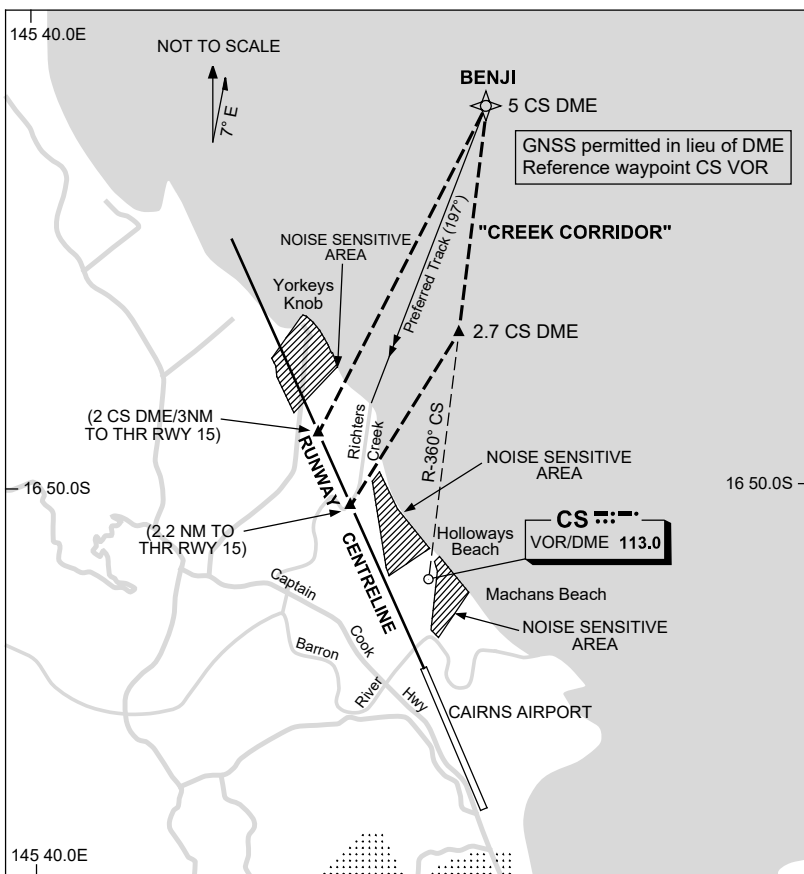
- 3.1 Circuit training by jet propelled aircraft and other aircraft exceeding 5,700KG MTOW is not permitted 2200-0700 local time.
- 3.2 Circuit training preferred directions.
 - (a) Runway 15 - Left hand circuits.
 - (b) Runway 33 - Right hand circuits.

4 - Other Restrictions

- 4.1 All aircraft between the hours of 2300-0600 local time unless associated with the normal preparation for flight, are not permitted to conduct engine runs, including idle power, without prior permission from Cairns Airport P/L, telephone - (07) 4080 6744 (H24)
- 4.2 All engine runs other than short duration idle power runs, are requested to be conducted in designated runup bays only. NON-Turbine propeller driven aircraft below 5,700KG MTOW may undertake short duration low power engine runs within leased areas.

- 4.3 Operators are requested to use Ground Power Units in lieu of aircraft Auxiliary Power Units where possible, especially on the International Apron between the hours 2300-0600 local time.
- 4.4 Operators and pilots of jet aircraft are requested to co-operate in limiting the use of reverse thrust when landing between the hours of 2300-0600 local time.

FIGURE 1
CREEK CORRIDOR

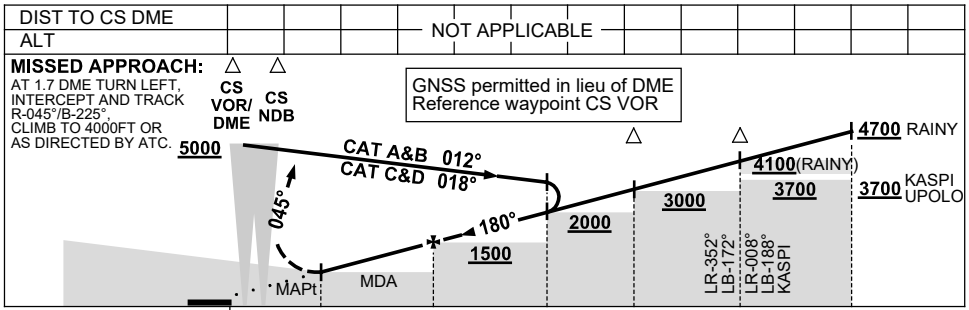
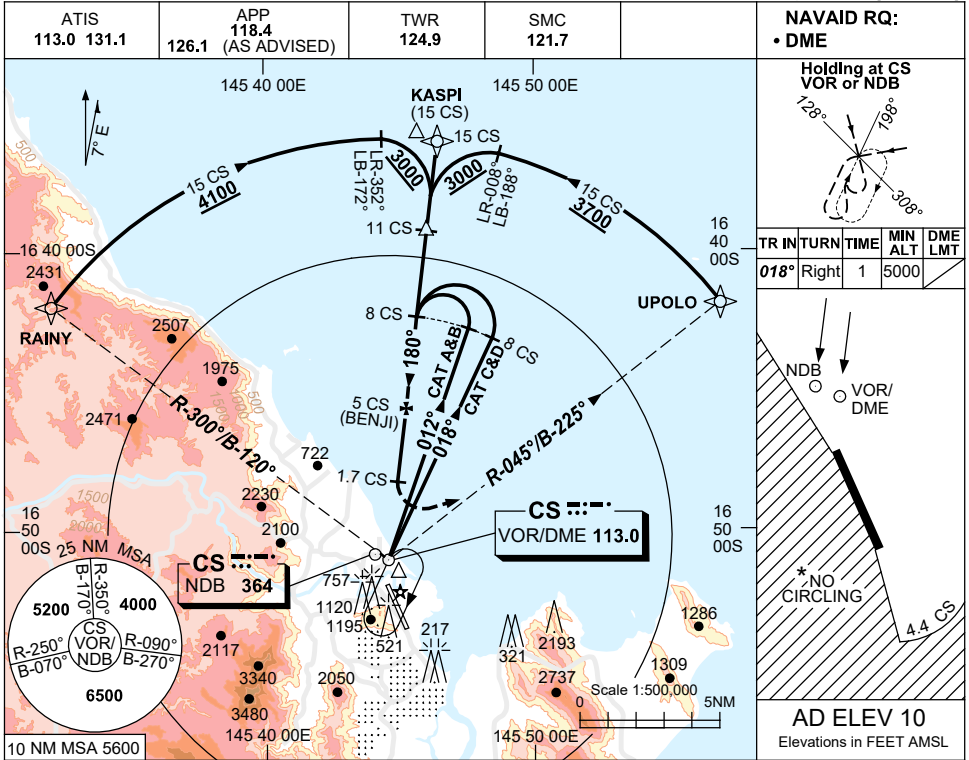


USE QNH

NDB-A or VOR-A

30 NOV 2023

CAIRNS/CAIRNS INTL, QLD (YBCS)



1. MAX IAS:
HOLDING: 185KT.
MAP (CAT C): 165KT.
MAP (CAT D): 185KT.
- * 2. NO CIRCLING WEST OF RWY 15/33 OR BEYOND 4.4 DME TO THE SOUTH.
3. COLOUR: SEE SPEC NOTICES.

CATEGORY	A	B	C	D
CIRCLING *	520 (510-2.4)	1010 (1000-4.0)	1230 (1220-5.0)	
ALTERNATE	(1010-4.4)	(1500-6.0)	(1720-7.0)	

Changes: KASPI REPLACES SUNNY, Editorial.

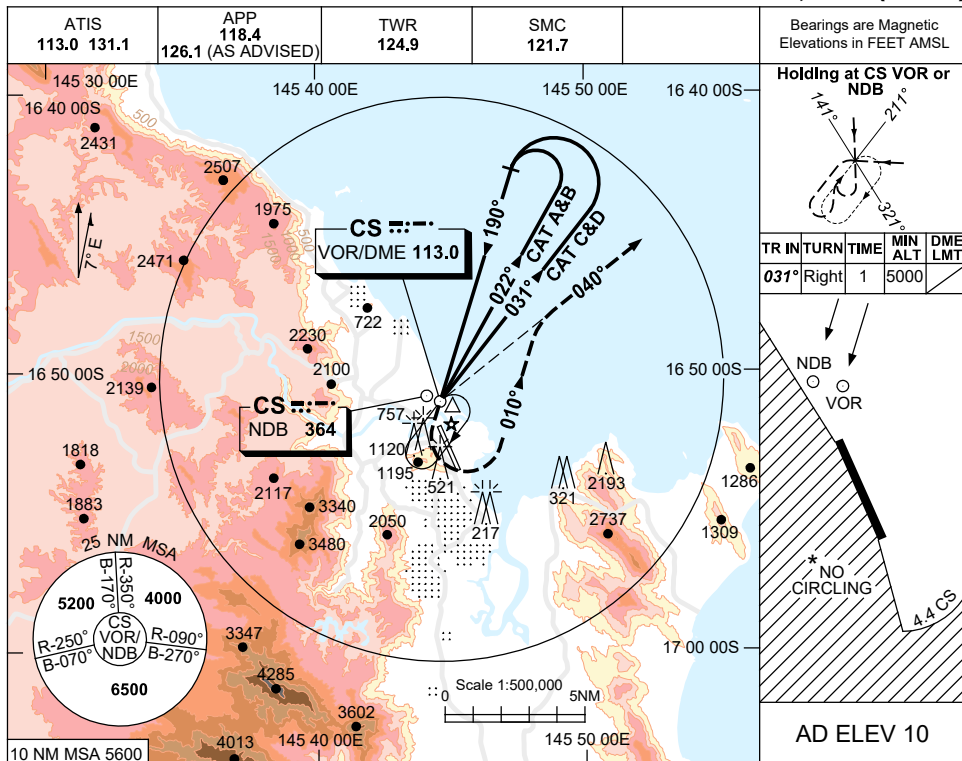
BCSNB01-177

USE QNH

NDB-B or VOR-B

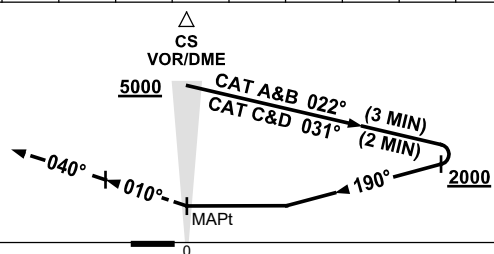
2 DEC 2021

CAIRNS/CAIRNS INTL, QLD (YBCS)



DME DIST	NOT APPLICABLE				
ALT					

MISSED APPROACH:
 AT NDB or VOR TURN LEFT
 TRACK 010°, INTERCEPT
 040° CS VOR or NDB.
 CLIMB TO 4000FT OR AS
 DIRECTED BY ATC.



NM TO CS DME

NOTES

1. MAX IAS:
 HOLDING: 185KT.
 INITIAL: CAT A&B 140KT.
 MAP TURN: 185KT.
- *2. NO CIRCLING WEST OF RWY 15/33 OR BEYOND 4.4 DME OR 2NM SOUTH OF THR RWY 33.
- ‡3. WITHOUT ILS, LOC & DME.
4. **COLOUR:** SEE SPEC NOTICES.

CATEGORY	A	B	C	D
CIRCLING *	1620 (1610-2.4)	1620 (1610-4.0)	1620 (1610-5.0)	
ALTERNATE ‡	(2110-4.4)	(2110-6.0)	(2110-7.0)	

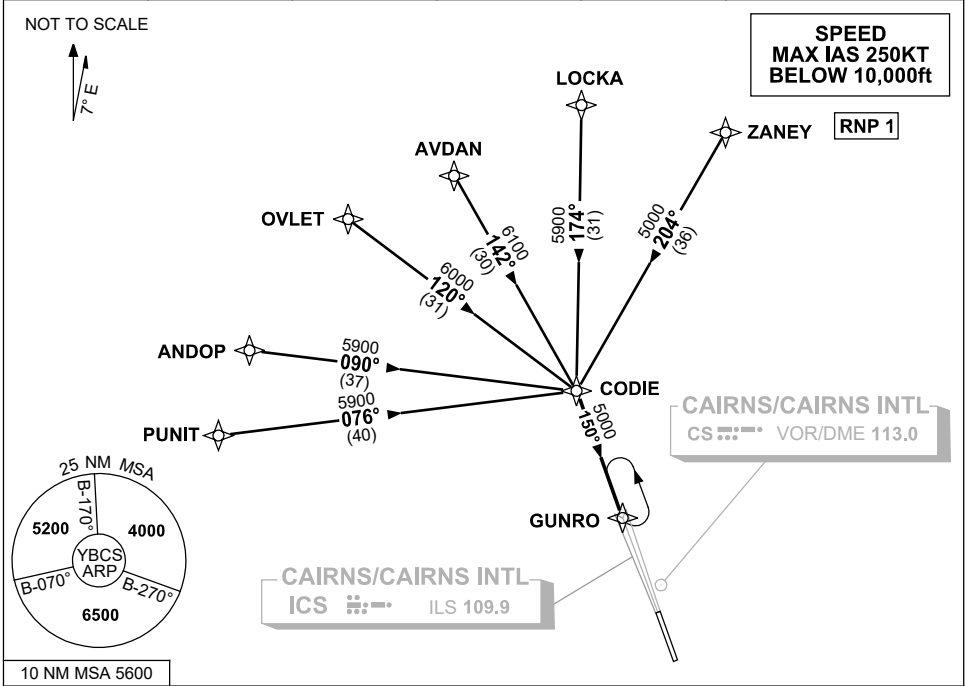
Changes: APP FREQ.

BCSNB02-199

**STANDARD INSTRUMENT ARRIVAL (STAR)
CODIE NINE ALPHA ARRIVAL (RNAV)
CAIRNS/CAIRNS INTL, QLD (YBCS)**

20 MAR 2025

ATIS 113.0 131.1	APP 118.4 126.1	TWR 124.9	SMC 121.7		Bearings are Magnetic Elevations in FEET AMSL
---------------------	--------------------	--------------	--------------	--	--



TRANSITIONS:

- ZANEY:** From ZANEY track 204° to CODIE
- LOCKA:** From LOCKA track 174° to CODIE
- AVDAN:** From AVDAN track 142° to CODIE
- OVLET:** From OVLET track 120° to CODIE
- ANDOP:** From ANDOP track 090° to CODIE
- PUNIT:** From PUNIT track 076° to CODIE

FOLLOW ARRIVAL INSTRUCTIONS

ARRIVAL: CODIE NINE

- RWY 15 ALPHA:**
- From CODIE track 150° to GUNRO
 - Track via ILS RWY 15 or LOC RWY 15 or RNP X RWY 15 (AR) or RNP Y RWY 15 (LNAV/VNAV ONLY) or RNP Z RWY 15

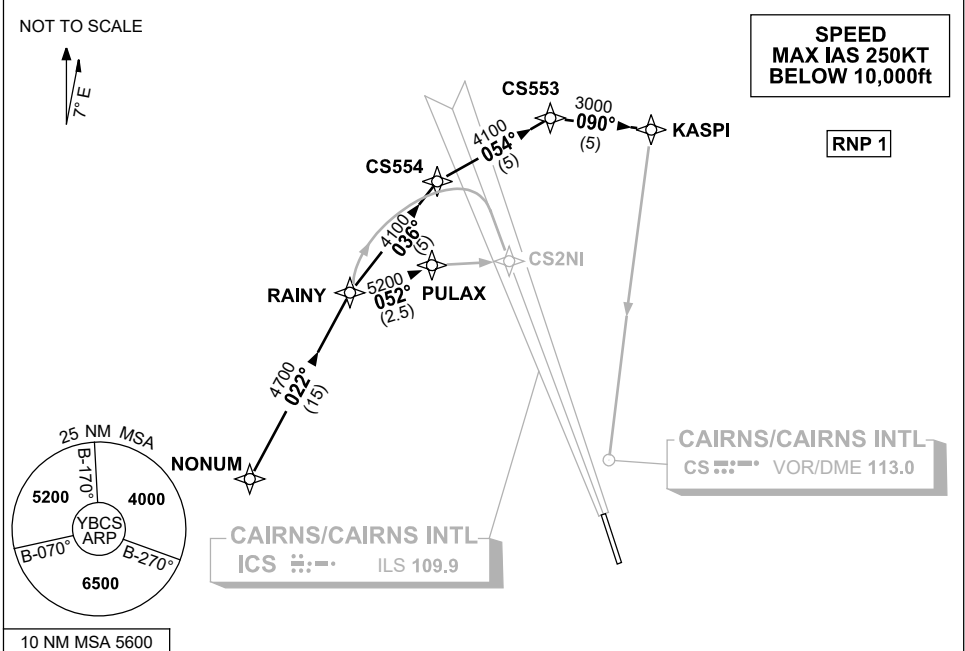
**COMMUNICATIONS FAILURE: PROCEDURE IN IMC
IF ABLE CTC CS ATC ON TEL: (07) 3866 3533**

- Squawk 7600, comply with vertical navigation requirements, but not below MSA.
- Track via the latest STAR clearance to the nominated runway, then fly the most suitable approach in accordance with ERSA EMERG Section 1.5.

**STANDARD INSTRUMENT ARRIVAL (STAR)
NONUM FIVE ALPHA, BRAVO, ZULU ARRIVALS (RNAV)
CAIRNS/CAIRNS INTL, QLD (YBCS)**

20 MAR 2025

ATIS 113.0 131.1	APP 118.4 126.1	TWR 124.9	SMC 121.7		Bearings are Magnetic Elevations in FEET AMSL
---------------------	--------------------	--------------	--------------	--	--



ARRIVAL: NONUM FIVE ALPHA

- RWY 15:**
- From NONUM, track 022° to RAINY for ILS or LOC RWY 15

ARRIVAL: NONUM FIVE BRAVO

- RWY 15:**
- From NONUM, track 022° to RAINY
 - Turn RIGHT, track 036° to CS554
 - Turn RIGHT, track 054° to CS553
 - Turn RIGHT, track 090° to KASPI for NDB-A or VOR-A.

ARRIVAL: NONUM FIVE ZULU

- RWY 15:**
- From NONUM, track 022° to RAINY
 - Turn RIGHT, track 052° to PULAX for RNP Y RWY 15 (LNAV/VNAV ONLY) or RNP Z RWY 15

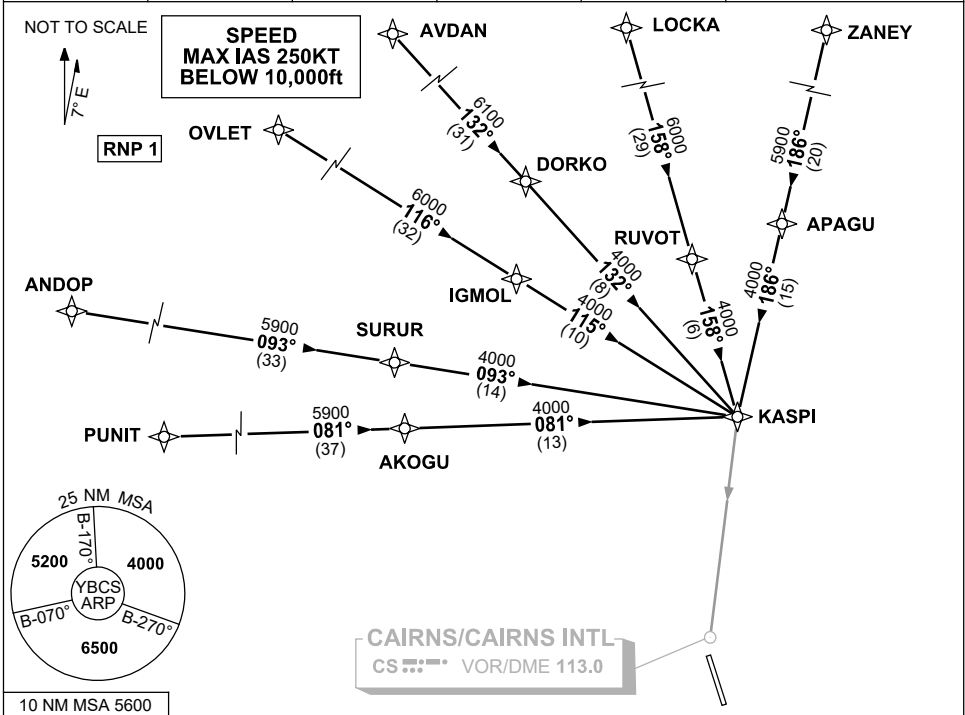
**COMMUNICATIONS FAILURE: PROCEDURE IN IMC
IF ABLE CTC CS ATC ON TEL: (07) 3866 3533**

- Squawk 7600, comply with vertical navigation requirements, but not below MSA.
- Track via the latest STAR clearance to the nominated runway, then fly the most suitable approach in accordance with ERS A EMERG Section 1.5.

**STANDARD INSTRUMENT ARRIVAL (STAR)
KASPI ONE BRAVO ARRIVAL (RNAV)
CAIRNS/CAIRNS INTL, QLD (YBCS)**

20 MAR 2025

ATIS 113.0 131.1	APP 118.4 126.1	TWR 124.9	SMC 121.7		Bearings are Magnetic Elevations in FEET AMSL
---------------------	--------------------	--------------	--------------	--	--



TRANSITIONS:

- PUNIT:** • From PUNIT, track 081° to AKOGU, then track 081° to KASPI
- ANDOP:** • From ANDOP, track 093° to SURUR, then track 093° to KASPI
- OVLET:** • From OVLET, track 116° to IGMOL, then track 115° to KASPI
- AVDAN:** • From AVDAN, track 132° to DORKO, then track 132° to KASPI
- LOCKA:** • From LOCKA, track 158° to RUVOT, then track 158° to KASPI
- ZANEY:** • From ZANEY, track 186° to APAGU, then track 186° to KASPI

FOLLOW ARRIVAL INSTRUCTIONS

ARRIVAL: KASPI ONE

RWY 15 BRAVO: • From KASPI, track via NDB-A or VOR-A.

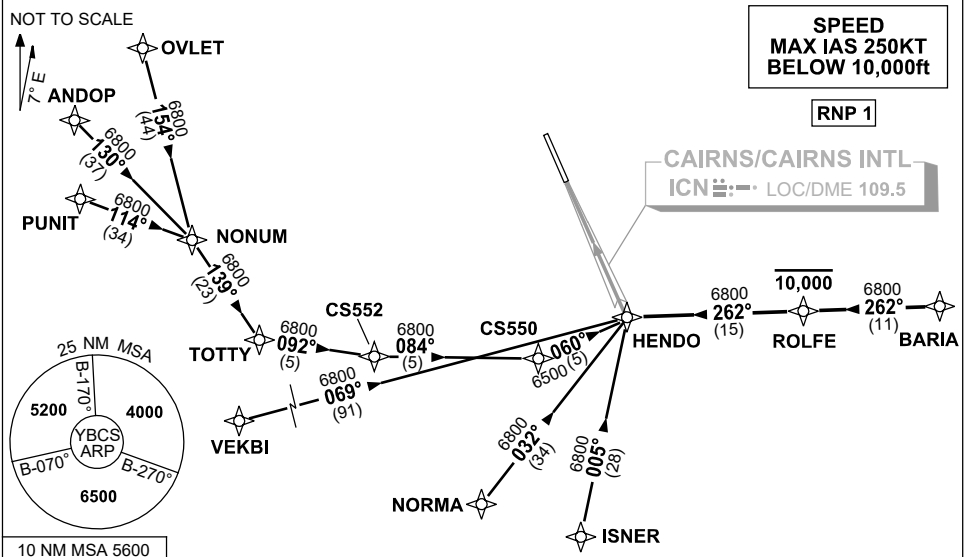
**COMMUNICATIONS FAILURE: PROCEDURE IN IMC
IF ABLE CTC CS ATC ON TEL: (07) 3866 3533**

- Squawk 7600, comply with vertical navigation requirements, but not below MSA.
- Track via the latest STAR clearance to the nominated runway, then fly the most suitable approach in accordance with ERSA EMERG Section 1.5.

**STANDARD INSTRUMENT ARRIVAL (STAR)
HENDO ONE ALPHA ARRIVAL (RNAV)
CAIRNS/CAIRNS INTL, QLD (YBCS)**

20 MAR 2025

ATIS 113.0 131.1	APP 118.4 126.1	TWR 124.9	SMC 121.7		Bearings are Magnetic Elevations in FEET AMSL
---------------------	--------------------	--------------	--------------	--	--



TRANSITIONS:

- OVLET:** From OVLET to HENDO
- Track 154° to NONUM
 - Turn LEFT, track 139° to TOTTY
 - Turn LEFT, track 092° to CS552
 - Turn LEFT, track 084° to CS550
 - Turn LEFT, track 060° to HENDO
- ANDOP:** From ANDOP to HENDO
- Track 130° to NONUM
 - Turn RIGHT, track 139° to TOTTY
 - Turn LEFT, track 092° to CS552
 - Turn LEFT, track 084° to CS550
 - Turn LEFT, track 060° to HENDO
- PUNIT:** From PUNIT to HENDO
- Track 114° to NONUM
 - Turn RIGHT, track 139° to TOTTY
 - Turn LEFT, track 092° to CS552
 - Turn LEFT, track 084° to CS550
 - Turn LEFT, track 060° to HENDO

- VEKBI:** From VEKBI to HENDO
- Track 069° to HENDO
- NORMA:** From NORMA to HENDO
- Track 032° to HENDO
- ISNER:** From ISNER to HENDO
- Track 005° to HENDO
- BARIA:** From BARIA to HENDO
- Track 262° to ROLFE
 - **Cross** ROLFE AT or BLW 10,000ft
 - Track 262° to HENDO

FOLLOW ARRIVAL INSTRUCTIONS

- ARRIVAL:** HENDO ONE
- RWY 33 ALPHA:** From HENDO track via LOC RWY 33 or RNP Y RWY 33 (AR) approach

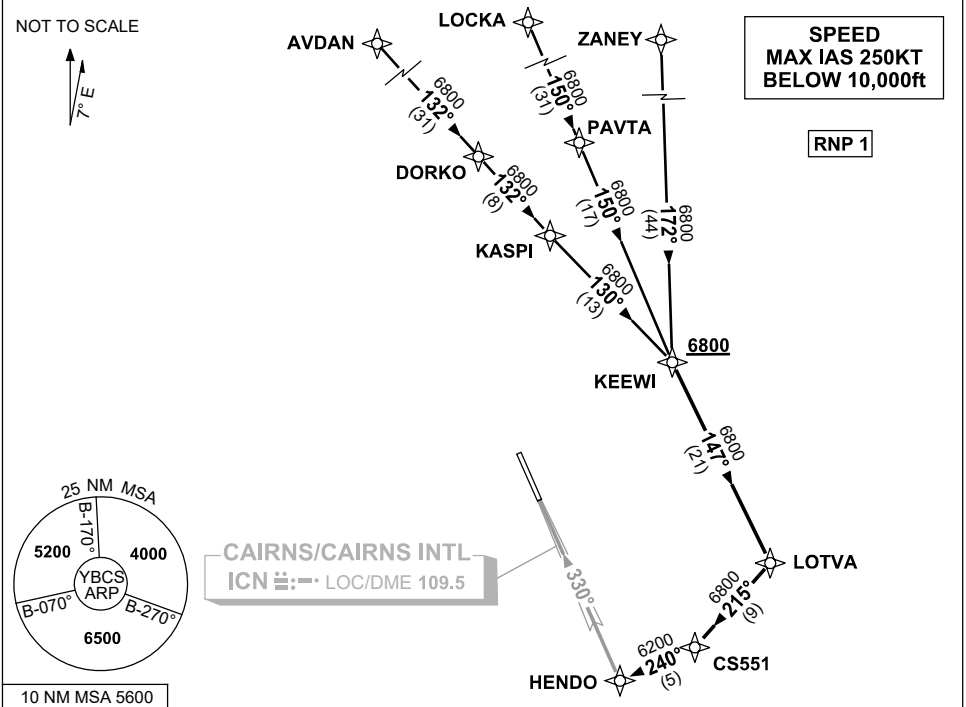
COMMUNICATIONS FAILURE: PROCEDURE IN IMC

- IF ABLE CTC CS ATC ON TEL: (07) 3866 3533**
- Squawk 7600, comply with vertical navigation requirements, but not below MSA.
 - Track via the latest STAR clearance to the nominated runway, then fly the most suitable approach in accordance with ERSA EMERG Section 1.5.

STANDARD INSTRUMENT ARRIVAL (STAR)
 KEEWI FOUR ALPHA ARRIVAL (RNAV)
CAIRNS/CAIRNS INTL, QLD (YBCS)

20 MAR 2025

ATIS 113.0 131.1	APP 118.4 126.1	TWR 124.9	SMC 121.7	Bearings are Magnetic Elevations in FEET AMSL
---------------------	--------------------	--------------	--------------	--



10 NM MSA 5600

TRANSITIONS:

- ZANEY:** • From ZANEY, track 172° to KEEWI
- LOCKA:** • From LOCKA, track 150° to PAVTA
• Track 150° to KEEWI
- AVDAN:** • From AVDAN, track 132° to DORKO
• Track 132° to KASPI
• Track 130° to KEEWI

FOLLOW ARRIVAL INSTRUCTIONS

ARRIVAL: KEEWI FOUR

- RWY 33 ALPHA:** • Cross KEEWI AT or ABV 6800ft
 • From KEEWI, track 147° to LOTVA
 • Turn RIGHT, track 215° to CS551
 • Turn RIGHT, track 240° to HENDO for LOC RWY 33

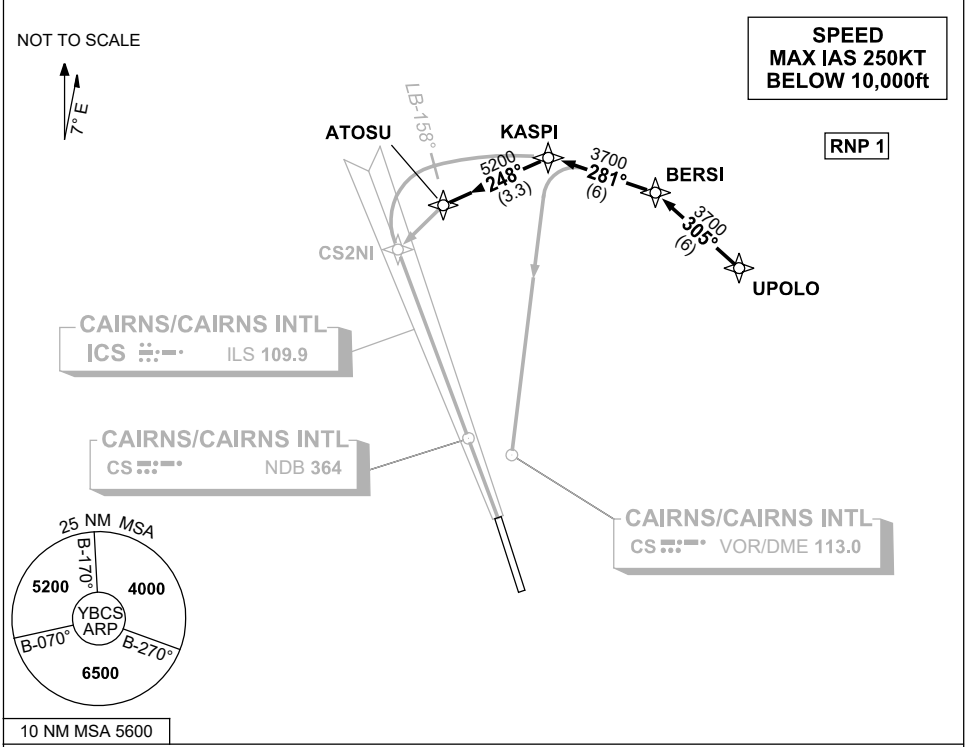
**COMMUNICATIONS FAILURE: PROCEDURE IN IMC
 IF ABLE CTC CS ATC ON TEL: (07) 3866 3533**

- Squawk 7600, comply with vertical navigation requirements, but not below MSA.
- Track via the latest STAR clearance to the nominated runway, then fly the most suitable approach in accordance with ERSA EMERG Section 1.5.

**STANDARD INSTRUMENT ARRIVAL (STAR)
UPOLO ONE ALPHA, ZULU ARRIVALS (RNAV)
CAIRNS/CAIRNS INTL, QLD (YBCS)**

20 MAR 2025

ATIS 113.0 131.1	APP 118.4 126.1	TWR 124.9	SMC 121.7		Bearings are Magnetic Elevations in FEET AMSL
---------------------	--------------------	--------------	--------------	--	--



ARRIVAL: **UPOLO ONE**

- From UPOLO, track 305° to BERSI,
- Turn LEFT, track 281° to KASPI.

RWY 15 ALPHA: • From KASPI, track via ILS or LOC RWY 15 or NDB-A or VOR-A

RWY 15 ZULU: • From KASPI, track 248° to ATOSU for RNP Y RWY 15 (LNAV/VNAV ONLY) or RNP Z RWY 15

**COMMUNICATIONS FAILURE: PROCEDURE IN IMC
IF ABLE CTC CS ATC ON TEL: (07) 3866 3533**

- Squawk 7600, comply with vertical navigation requirements, but not below MSA.
- Track via the latest STAR clearance to the nominated runway, then fly the most suitable approach in accordance with ERSA EMERG Section 1.5.

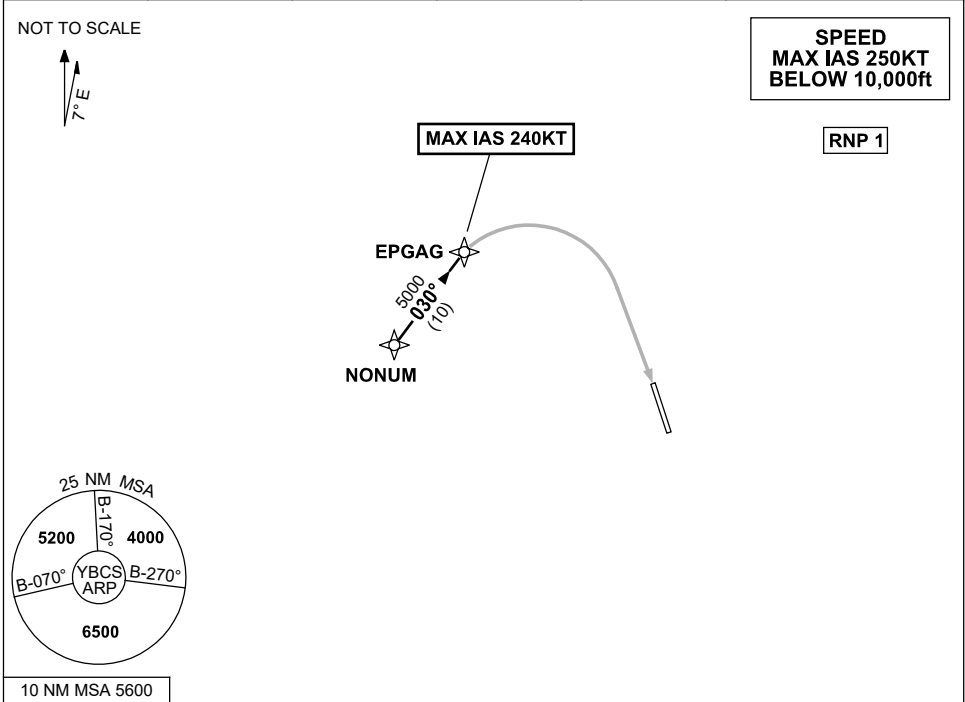
Changes: MSA, REVISED PROC, Editorial.

BCSSR08-182

**STANDARD INSTRUMENT ARRIVAL (STAR)
NONUM FIVE WHISKEY ARRIVAL (RNAV)
CAIRNS/CAIRNS INTL, QLD (YBCS)**

20 MAR 2025

ATIS 113.0 131.1	APP 118.4 126.1	TWR 124.9	SMC 121.7		Bearings are Magnetic Elevations in FEET AMSL
---------------------	--------------------	--------------	--------------	--	--



ARRIVAL: NONUM FIVE

RWY 15 WHISKEY:

- From NONUM track 030° to EPGAG
- From EPGAG track via RNP W RWY 15 (AR)
MAX IAS 240KT from EPGAG

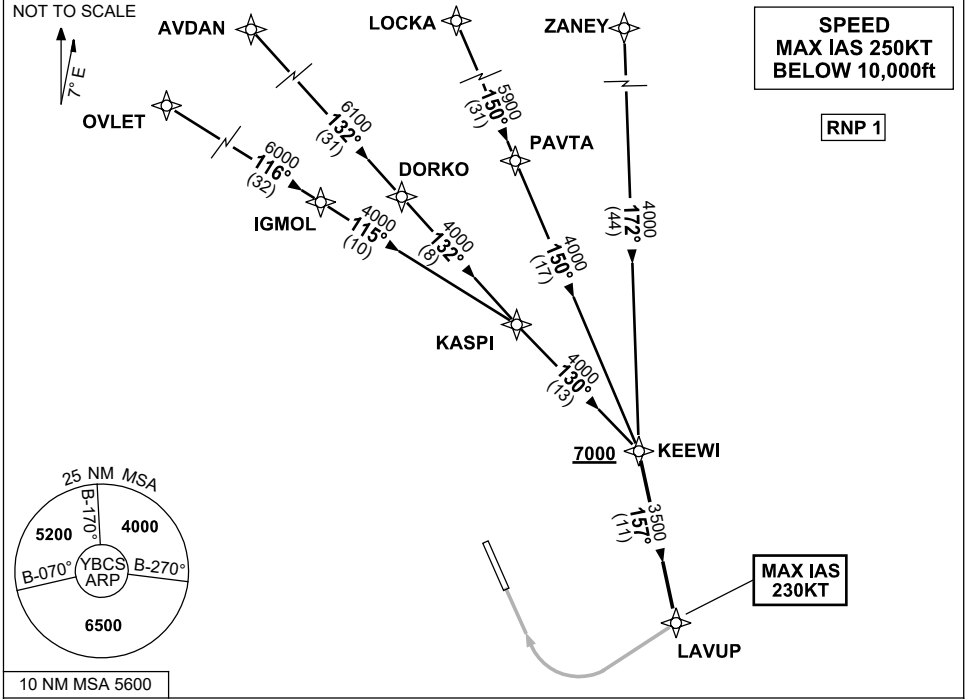
**COMMUNICATIONS FAILURE: PROCEDURE IN IMC
IF ABLE CTC CS ATC ON TEL: (07) 3866 3533**

- Squawk 7600, comply with vertical navigation requirements, but not below MSA.
- Track via the latest STAR clearance to the nominated runway, then fly the most suitable approach in accordance with ERS A EMERG Section 1.5.

**STANDARD INSTRUMENT ARRIVAL (STAR)
KEEWI FOUR X-RAY ARRIVAL (RNAV)
CAIRNS/CAIRNS INTL, QLD (YBCS)**

20 MAR 2025

ATIS 113.0 131.1	APP 118.4 126.1	TWR 124.9	SMC 121.7	Bearings are Magnetic Elevations in FEET AMSL
---------------------	--------------------	--------------	--------------	--



TRANSITIONS:

- ZANEY:**
 - From ZANEY track 172° to KEEWI
- LOCKA:**
 - From LOCKA track 150° to PAVTA
 - Track 150° to KEEWI
- AVDAN:**
 - From AVDAN track 132° to DORKO
 - Track 132° to KASPI
 - Track 130° to KEEWI
- OVLET:**
 - From OVLET track 116° to IGMOL
 - Track 115° to KASPI
 - Track 130° to KEEWI

FOLLOW ARRIVAL INSTRUCTIONS

ARRIVAL: KEEWI FOUR

- RWY 33 X-RAY:** **Cross** KEEWI AT or ABV 7000ft
- From KEEWI track 157° to LAVUP, then via RNP X RWY 33 (AR)
MAX IAS 230KT from LAVUP

**COMMUNICATIONS FAILURE: PROCEDURE IN IMC
IF ABLE CTC CS ATC ON TEL: (07) 3866 3533**

- Squawk 7600, comply with vertical navigation requirements, but not below MSA.
- Track via the latest STAR clearance to the nominated runway, then fly the most suitable approach in accordance with ERS A EMERG Section 1.5.

**STANDARD INSTRUMENT ARRIVAL (STAR)
UPOLO ONE X-RAY ARRIVAL (RNAV)
CAIRNS/CAIRNS INTL, QLD (YBCS)**

20 MAR 2025

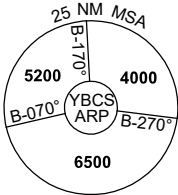
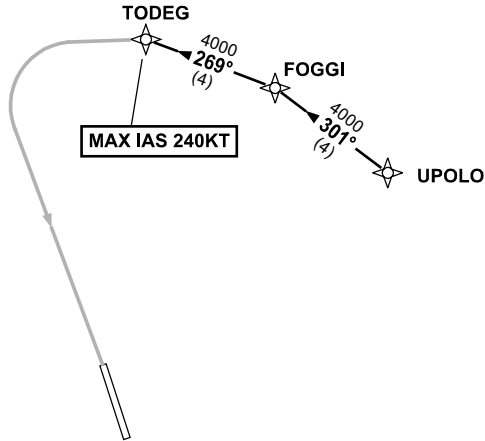
ATIS 113.0 131.1	APP 118.4 126.1	TWR 124.9	SMC 121.7		Bearings are Magnetic Elevations in FEET AMSL
---------------------	--------------------	--------------	--------------	--	--

NOT TO SCALE



**SPEED
MAX IAS 250KT
BELOW 10,000ft**

RNP 1



10 NM MSA 5600

ARRIVAL:

UPOLO ONE

RWY 15 X-RAY:

- From UPOLO track 301° to FOGGI,
- Track 269° to TODEG,
then via RNP X RWY 15 (AR)
MAX IAS 240KT from TODEG

**COMMUNICATIONS FAILURE: PROCEDURE IN IMC
IF ABLE CTC CS ATC ON TEL: (07) 3866 3533**

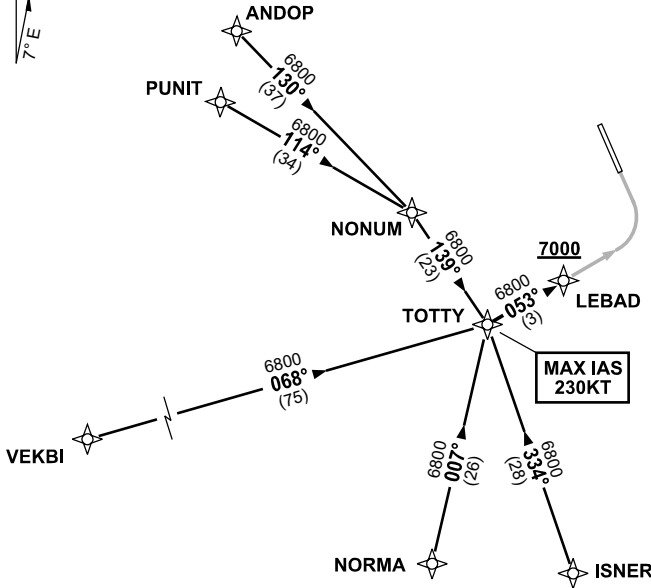
- Squawk 7600, comply with vertical navigation requirements, but not below MSA.
- Track via the latest STAR clearance to the nominated runway, then fly the most suitable approach in accordance with ERS A EMERG Section 1.5.

**STANDARD INSTRUMENT ARRIVAL (STAR)
TOTTY FIVE WHISKEY ARRIVAL (RNAV)
CAIRNS/CAIRNS INTL, QLD (YBCS)**

20 MAR 2025

ATIS 113.0 131.1	APP 118.4 126.1	TWR 124.9	SMC 121.7		Bearings are Magnetic Elevations in FEET AMSL
---------------------	--------------------	--------------	--------------	--	--

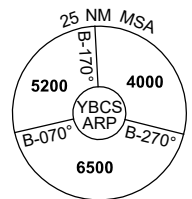
NOT TO SCALE



**SPEED
MAX IAS 250KT
BELOW 10,000ft**

RNP 1

**MAX IAS
230KT**



10 NM MSA 5600

TRANSITIONS:

- ANDOP:** From ANDOP to TOTTY
- Track 130° to NONUM,
 - Turn RIGHT, track 139° to TOTTY
- PUNIT:** From PUNIT to TOTTY
- Track 114° to NONUM,
 - Turn RIGHT, track 139° to TOTTY

- VEKBI:** From VEKBI to TOTTY
- Track 068° to TOTTY
- NORMA:** From NORMA to TOTTY
- Track 007° to TOTTY
- ISNER:** From ISNER to TOTTY
- Track 334° to TOTTY

FOLLOW ARRIVAL INSTRUCTIONS

- ARRIVAL:** TOTTY FIVE
- RWY 33 WHISKEY:** From TOTTY track 053° to LEBAD, thence via RNP W RWY 33 (AR)
MAX IAS 230KT from TOTTY

**COMMUNICATIONS FAILURE: PROCEDURE IN IMC
IF ABLE CTC CS ATC ON TEL: (07) 3866 3533**

- Squawk 7600, comply with vertical navigation requirements, but not below MSA.
- Track via the latest STAR clearance to the nominated runway, then fly the most suitable approach in accordance with ERSA EMERG Section 1.5.

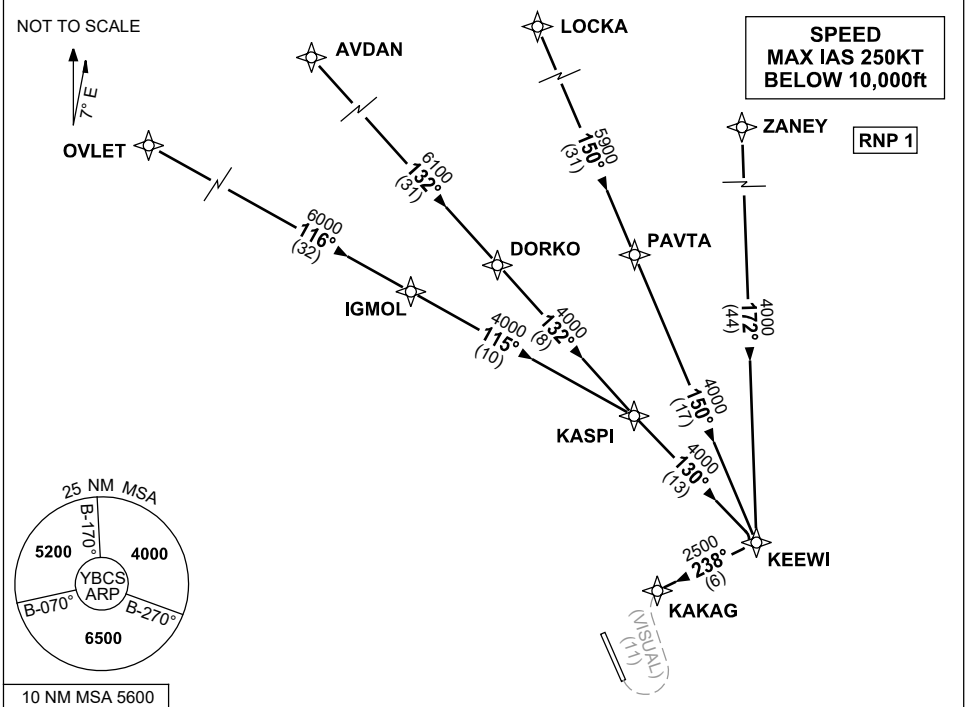
Changes: Editorial.

BCSSR15-182

**STANDARD INSTRUMENT ARRIVAL (STAR)
KEEWI FOUR VICTOR ARRIVAL (RNAV)
CAIRNS/CAIRNS INTL, QLD (YBCS)**

20 MAR 2025

ATIS 113.0 131.1	APP 118.4 126.1	TWR 124.9	SMC 121.7		Bearings are Magnetic Elevations in FEET AMSL
---------------------	--------------------	--------------	--------------	--	--



TRANSITIONS:

- ZANEY:**
 - From ZANEY track 172° to KEEWI
- LOCKA:**
 - From LOCKA track 150° to PAVTA
 - Track 150° to KEEWI
- AVDAN:**
 - From AVDAN track 132° to DORKO
 - Track 132° to KASPI
 - Track 130° to KEEWI
- OVLET:**
 - From OVLET track 116° to IGMOL
 - Track 115° to KASPI
 - Track 130° to KEEWI

FOLLOW ARRIVAL INSTRUCTIONS

ARRIVAL: KEEWI FOUR

RWY 33 VICTOR: Turn RIGHT, track 238° to KAKAG.
At KAKAG turn LEFT track VISUAL for RIGHT base RWY 33.

**COMMUNICATIONS FAILURE: PROCEDURE IN IMC
IF ABLE CTC CS ATC ON TEL: (07) 3866 3533**

- Squawk 7600, comply with vertical navigation requirements, but not below MSA.
- Track via the latest STAR clearance to the nominated runway, then fly the most suitable approach in accordance with ERS A EMERG Section 1.5.

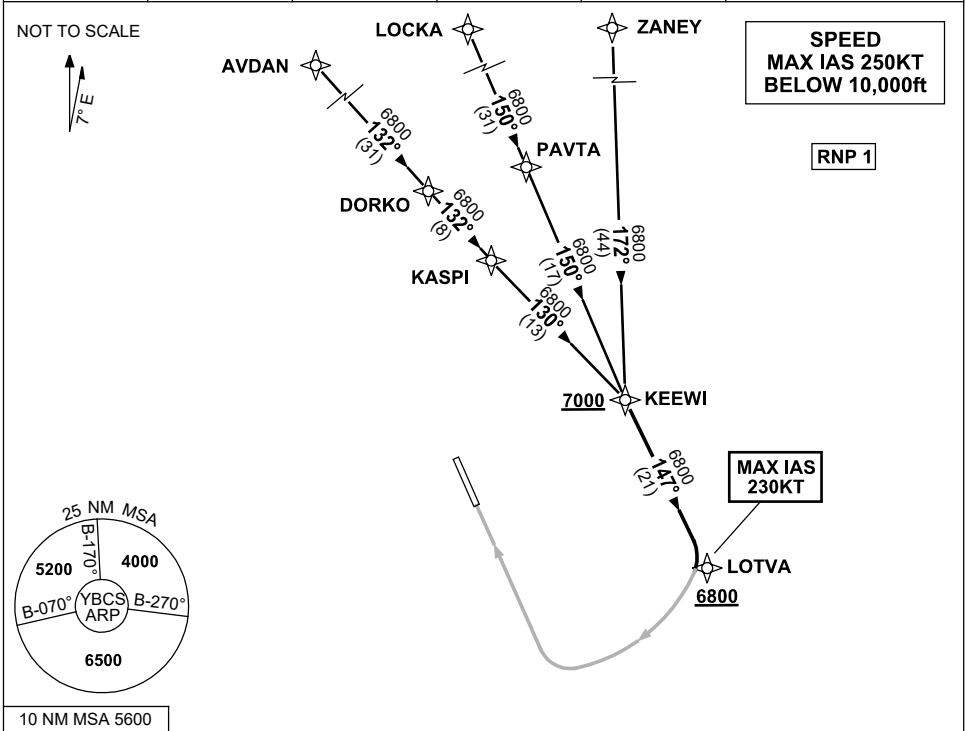
Changes: MSA, VALIDITY INDICATOR, Editorial.

BCSSR16-182

**STANDARD INSTRUMENT ARRIVAL (STAR)
KEEWI FOUR YANKEE ARRIVAL (RNAV)
CAIRNS/CAIRNS INTL, QLD (YBCS)**

20 MAR 2025

ATIS 113.0 131.1	APP 118.4 126.1	TWR 124.9	SMC 121.7		Bearings are Magnetic Elevations in FEET AMSL
---------------------	--------------------	--------------	--------------	--	--



TRANSITIONS:

- ZANEY:**
 - From ZANEY track 172° to KEEWI
- LOCKA:**
 - From LOCKA track 150° to PAVTA
 - Track 150° to KEEWI
- AVDAN:**
 - From AVDAN track 132° to DORKO
 - Track 132° to KASPI
 - Track 130° to KEEWI

FOLLOW ARRIVAL INSTRUCTIONS

ARRIVAL: KEEWI FOUR

- RWY 33 YANKEE:**
- **Cross** KEEWI AT or ABV 7000ft
 - From KEEWI track 147° to LOTVA, then via RNP Y RWY 33 (AR)
 - **Cross** LOTVA AT or ABV 6800ft
 - **MAX IAS 230KT** from LOTVA

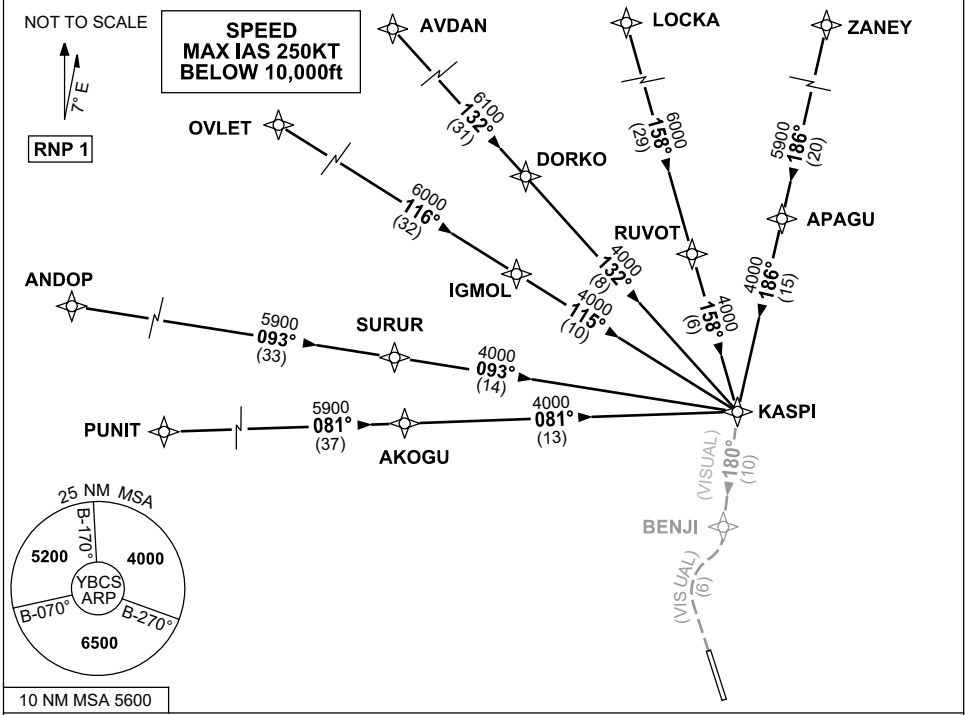
**COMMUNICATIONS FAILURE: PROCEDURE IN IMC
IF ABLE CTC CS ATC ON TEL: (07) 3866 3533**

- Squawk 7600, comply with vertical navigation requirements, but not below MSA.
- Track via the latest STAR clearance to the nominated runway, then fly the most suitable approach in accordance with ERS A EMERG Section 1.5.

**STANDARD INSTRUMENT ARRIVAL (STAR)
KASPI ONE VICTOR ARRIVAL (RNAV)
CAIRNS/CAIRNS INTL, QLD (YBCS)**

20 MAR 2025

ATIS 113.0 131.1	APP 118.4 126.1	TWR 124.9	SMC 121.7		Bearings are Magnetic Elevations in FEET AMSL
---------------------	--------------------	--------------	--------------	--	--



TRANSITIONS:

- PUNIT:** • From PUNIT, track 081° to AKOGU, then track 081° to KASPI
- ANDOP:** • From ANDOP, track 093° to SURUR, then track 093° to KASPI
- OVLET:** • From OVLET, track 116° to IGMOL, then track 115° to KASPI
- AVDAN:** • From AVDAN, track 132° to DORKO, then track 132° to KASPI
- LOCKA:** • From LOCKA, track 158° to RUVOT, then track 158° to KASPI
- ZANEY:** • From ZANEY, track 186° to APAGU, then track 186° to KASPI

FOLLOW ARRIVAL INSTRUCTIONS

ARRIVAL: KASPI ONE

- RWY 15 VICTOR:** • From KASPI, track 180° VISUAL to BENJI then VISUAL track via 'Creek Corridor' (Cairns NAP refers)

**COMMUNICATIONS FAILURE: PROCEDURE IN IMC
IF ABLE CTC CS ATC ON TEL: (07) 3866 3533**

- Squawk 7600, comply with vertical navigation requirements, but not below MSA.
- Track via the latest STAR clearance to the nominated runway, then fly the most suitable approach in accordance with ERSA EMERG Section 1.5.

**STANDARD INSTRUMENT ARRIVAL (STAR)
UPOLO ONE VICTOR ARRIVAL (RNAV)
CAIRNS/CAIRNS INTL, QLD (YBCS)**

20 MAR 2025

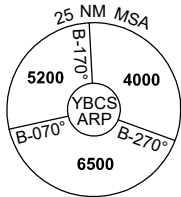
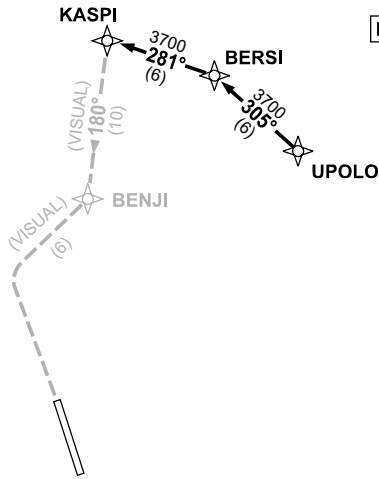
ATIS 113.0 131.1	APP 118.4 126.1	TWR 124.9	SMC 121.7		Bearings are Magnetic Elevations in FEET AMSL
---------------------	--------------------	--------------	--------------	--	--

NOT TO SCALE



**SPEED
MAX IAS 250KT
BELOW 10,000ft**

RNP 1



10 NM MSA 5600

ARRIVAL:

UPOLO ONE

- From UPOLO, track 305° to BERSI
- Turn LEFT, track 281° to KASPI

RWY 15 VICTOR:

- From KASPI, track 180° VISUAL to BENJI then track via "Creek Corridor" (Cairns NAP refers)

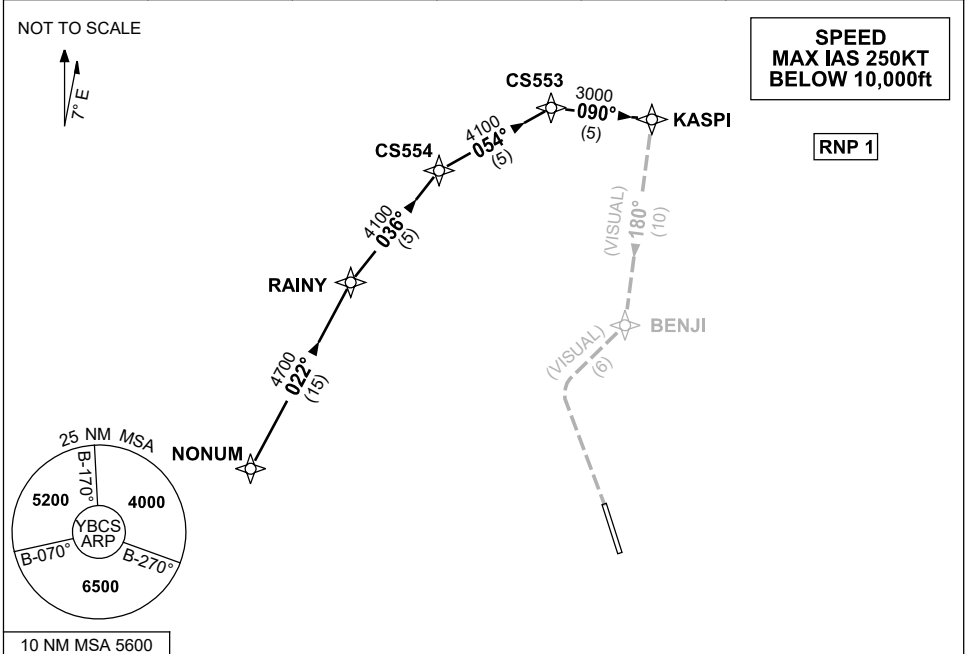
**COMMUNICATIONS FAILURE: PROCEDURE IN IMC
IF ABLE CTC CS ATC ON TEL: (07) 3866 3533**

- Squawk 7600, comply with vertical navigation requirements, but not below MSA.
- Track via the latest STAR clearance to the nominated runway, then fly the most suitable approach in accordance with ERSA EMERG Section 1.5.

**STANDARD INSTRUMENT ARRIVAL (STAR)
NONUM FIVE VICTOR ARRIVAL (RNAV)
CAIRNS/CAIRNS INTL, QLD (YBCS)**

20 MAR 2025

ATIS 113.0 131.1	APP 118.4 126.1	TWR 124.9	SMC 121.7		Bearings are Magnetic Elevations in FEET AMSL
---------------------	--------------------	--------------	--------------	--	--



ARRIVAL: NONUM FIVE VICTOR

RWY 15:

- From NONUM, track 022° to RAINY
- Turn RIGHT, track 036° to CS554
- Turn RIGHT, track 054° to CS553
- Turn RIGHT, track 090° to KASPI
- From KASPI, track 180° VISUAL to BENJI then VISUAL track via "Creek Corridor" (Cairns NAP refers)

**COMMUNICATIONS FAILURE: PROCEDURE IN IMC
IF ABLE CTC CS ATC ON TEL: (07) 3866 3533**

- Squawk 7600, comply with vertical navigation requirements, but not below MSA.
- Track via the latest STAR clearance to the nominated runway, then fly the most suitable approach in accordance with ERSA EMERG Section 1.5.