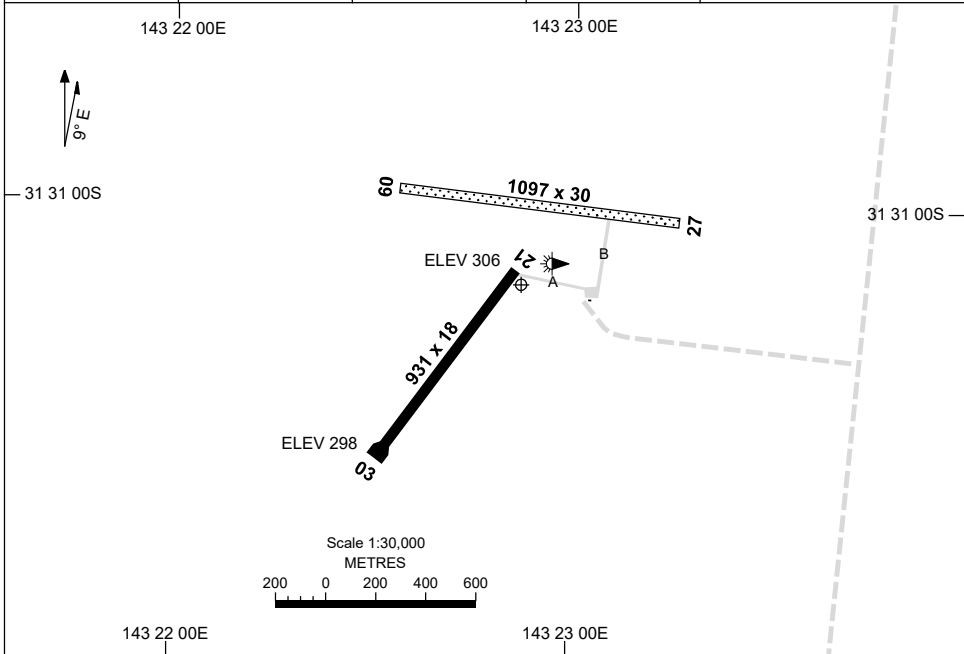


2 DEC 2021

AD ELEV 313
31 31 10S 143 22 52E

AERODROME CHART
WILCANNIA, NSW (YWCA)

AWIS 133.35	FIA ML CEN 124.9	CTAF 126.7	PAL 119.6	Bearings are Magnetic Elevations in FEET AMSL
----------------	---------------------	---------------	--------------	--



RWY		AERODROME LIGHTING
		TAXIWAY : BLUE EDGE RL : PAL , SDBY (MAN ACT, 15 MIN PN) FOR MEDICAL FLIGHTS ONLY.
03 ⁰²⁷		LIRL
²⁰⁷ 21		LIRL

NOTES

1. AWIS (PHONE) 02 9353 6459
2. ML CEN FIA 124.9 AVBL IN CIRCUIT AREA.

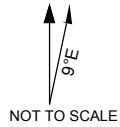
Changes: SDBY PWR, NOTE 2.

WCAAD01-169

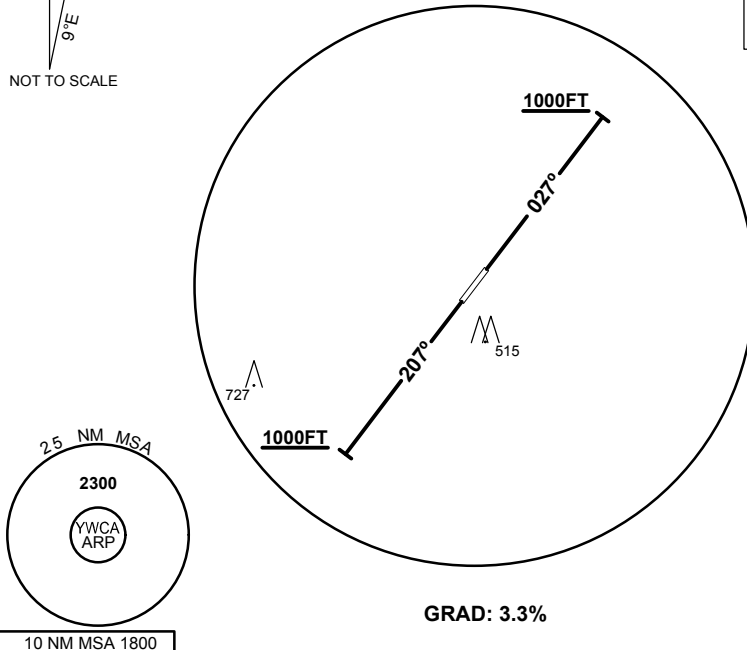
STANDARD INSTRUMENT DEPARTURE
WILCANNIA ONE DEPARTURE
WILCANNIA, NSW (YWCA)

13 AUG 2020

AWIS 133.35	FIA ML CEN 124.9	CTAF 126.7	PAL 119.6	BRG are MAG ELEV in FEET AMSL
----------------	---------------------	---------------	--------------	----------------------------------



SPEED
MAX IAS 250KT
BELOW 10,000FT



WILCANNIA ONE DEPARTURE

RWY 03

- Track 027°
- At or above 1000FT turn as required
- Continue climb to 2300FT
- Intercept flight plan route

RWY 21

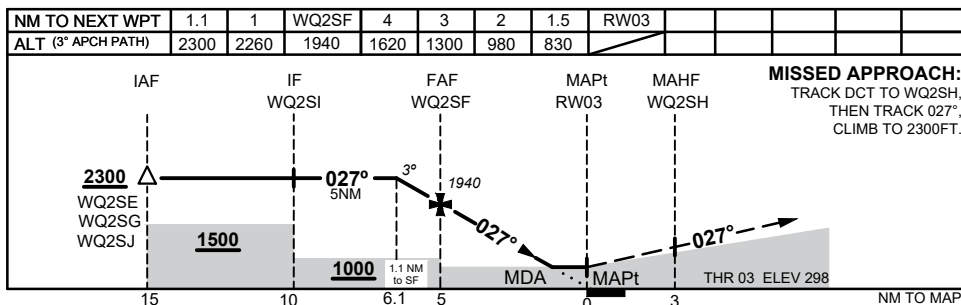
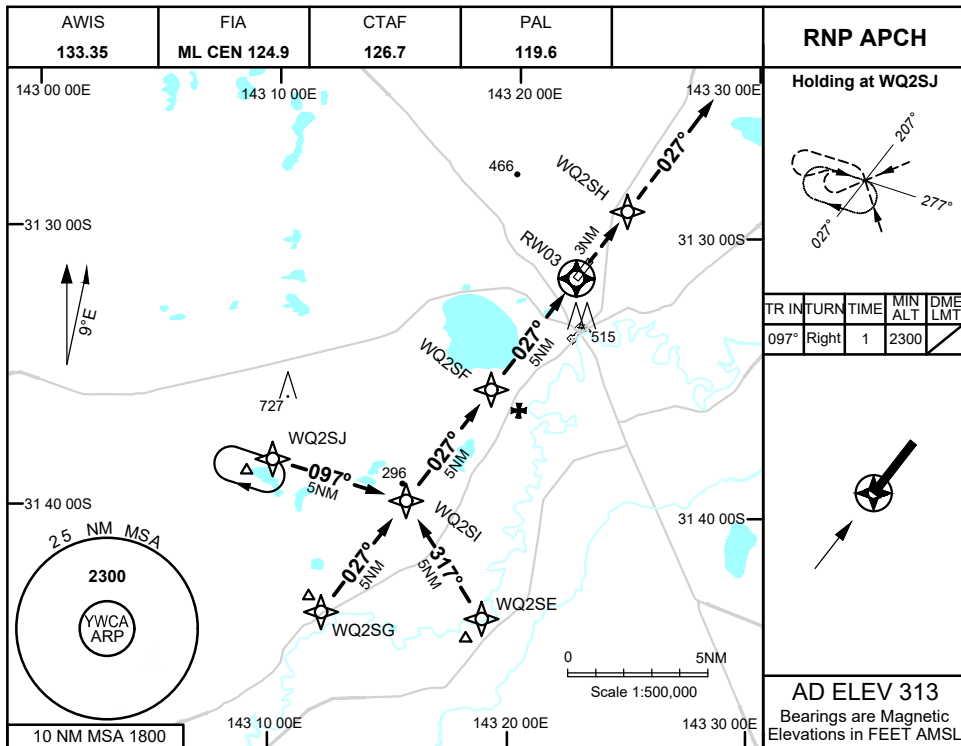
- Track 207°
- At or above 1000FT turn as required
- Continue climb to 2300FT
- Intercept flight plan route

NOTES

- NIL -



1 DEC 2022



CATEGORY	A	B	C	D
LNAV	830 (532 - 3.0)			NOT APPLICABLE
CIRCLING	920 (607 - 2.4)		1100 (787 - 4.0)	
ALTERNATE	(1107 - 4.4)		(1287 - 6.0)	

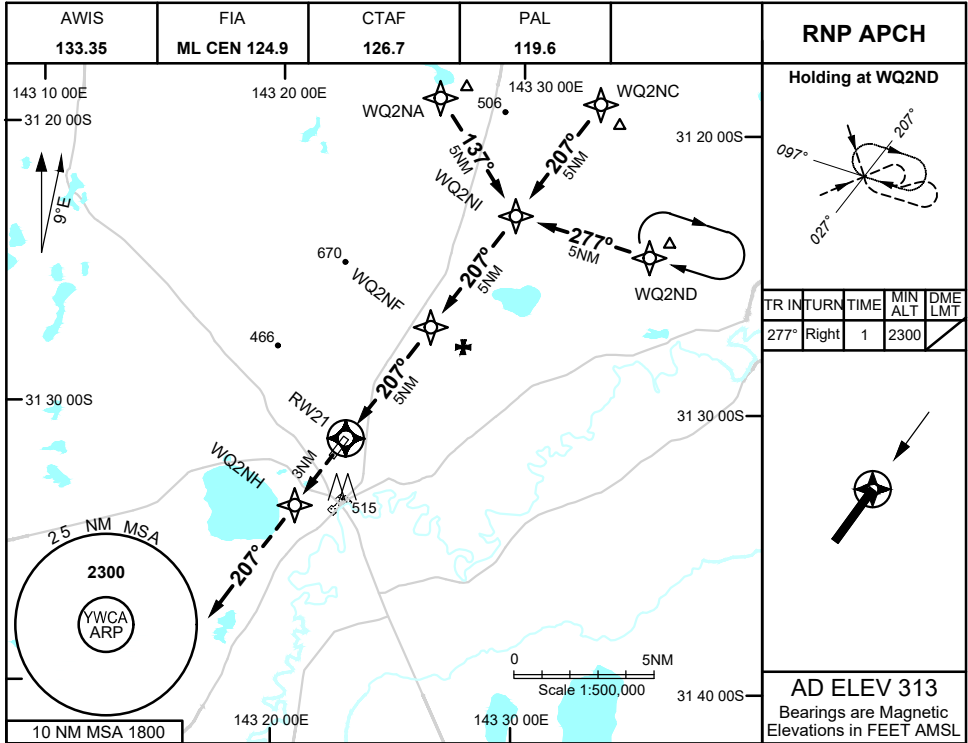
NOTES
 1. MAX IAS:
 INITIAL : 210KTS

Changes: CHART TITLE, WPT IDENTS, Editorial

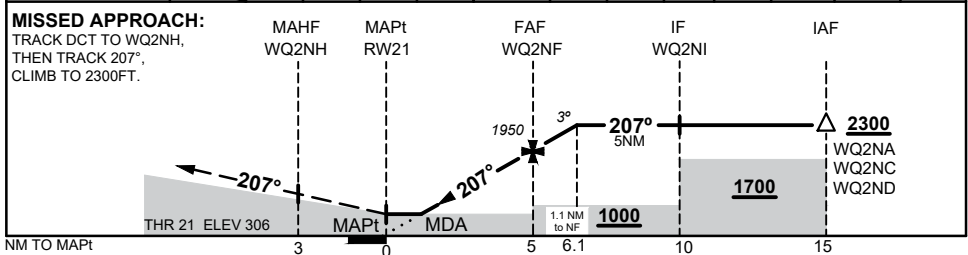
WCAGN01-173



1 DEC 2022



NM TO NEXT WPT	RW21	1.5	2	3	4	WQ2NF	1	1.1				
ALT (3° APCH PATH)		830	990	1310	1630	1950	2270	2300				



CATEGORY	A	B	C	D
LNAV	830 (524 - 3.0)			NOT APPLICABLE
CIRCLING	920 (607 - 2.4)		1100 (787 - 4.0)	
ALTERNATE	(1107 - 4.4)		(1287 - 6.0)	

NOTES
1. MAX IAS:
INITIAL : 210KTS

Changes: CHART TITLE, WPT IDENTs, Editorial

WCAGN02-173