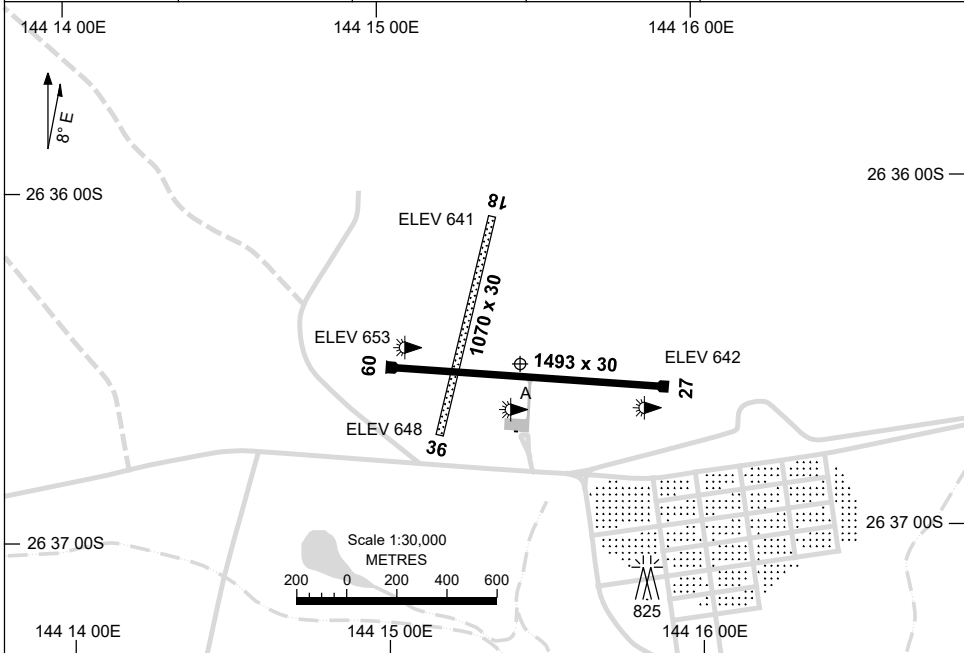


21 MAR 2024

AD ELEV 655
26 36 31S 144 15 26E

AERODROME CHART
QUILPIE, QLD (YQLP)

FIA BN CEN 118.8	CTAF+AFRU 126.7	PAL+AA 120.6		Bearings are Magnetic Elevations in FEET AMSL
---------------------	--------------------	-----------------	--	--------------------------------------------------



RWY		AERODROME LIGHTING	
		TWY : BLUE EDGE	RL : PAL+AA 120.6 , PTBL, SDBY (15 SEC)
09 <small>086</small>		LIRL	PTBL
<small>266</small> 27		LIRL	PTBL
18 <small>187</small>		NIL	
<small>007</small> 36		NIL	

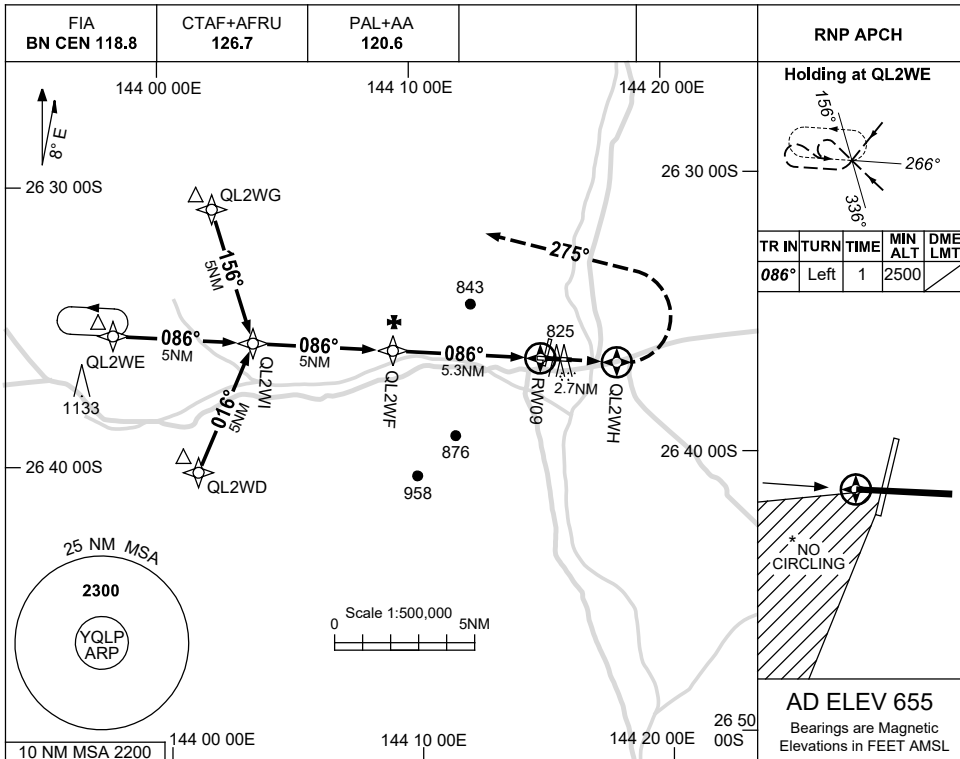
NOTES

1. FIA FREQ 118.8 AVBL 7,000ft.

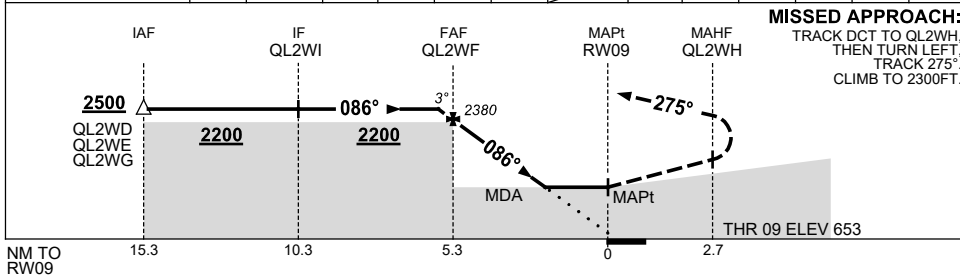
USE QNH

RNP RWY 09
QUILPIE, QLD (YQLP)

1 DEC 2022



NM TO NEXT WPT	0.4	QL2WF	4	3	2	1.6	RW09						
ALT (3° APCH PATH)	2500	2380	1980	1660	1340	1210							



NOTES

CATEGORY	A	B	C	D
LNAV	1210 (555-3.1)			NOT APPLICABLE
CIRCLING *	1250 (595-2.4)		1480 (825-4.0)	
ALTERNATE	(1095-4.4)		(1325-6.0)	

- 1. MAX IAS: INITIAL : 230KT.
- *2. NO CIRCLING SOUTH WEST OF RWY 18/36 & 09/27.

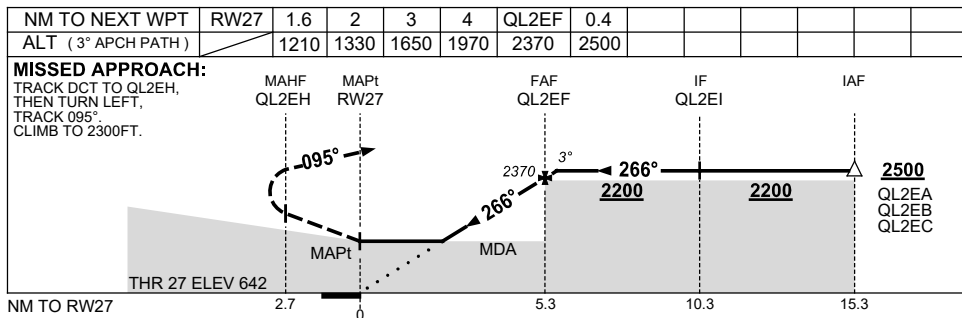
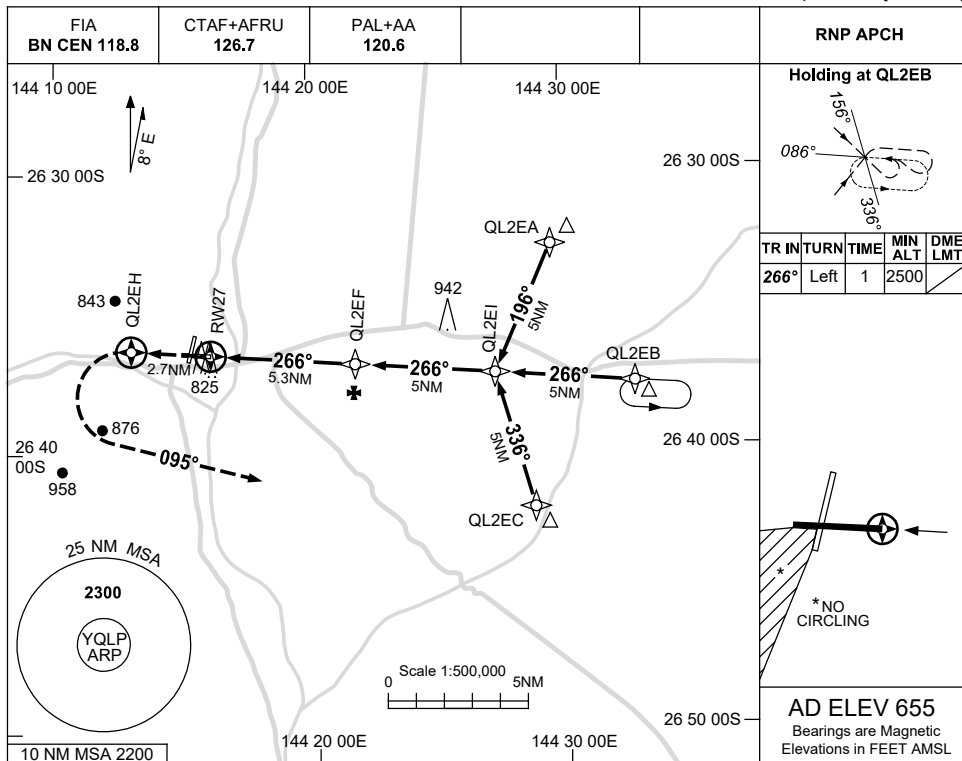
Changes: 1133FT MAST, 825FT MAST, WPT NAMING CONVENTION.

QLPGN01-173

USE QNH

RNP RWY 27
QUILPIE, QLD (YQLP)

1 DEC 2022



NOTES

CATEGORY	A	B	C	D
LNAV	1210 (568-3.2)			NOT APPLICABLE
CIRCLING *	1250 (595-2.4)		1480 (825-4.0)	
ALTERNATE	(1095-4.4)		(1325-6.0)	

- 1. MAX IAS: INITIAL : 230KT.
- *2. NO CIRCLING SOUTH WEST OF RWY 18/36 & 09/27.

Changes: 942FT MAST, 825FT MAST, WPT NAMING CONVENTION.

QLPGN02-173