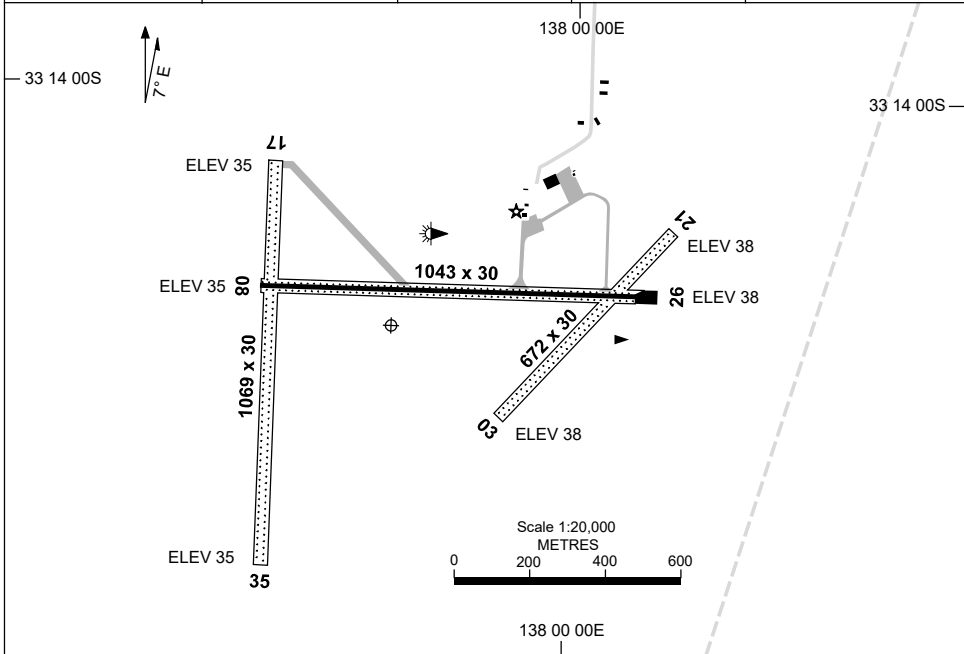


7 SEP 2023

AD ELEV 39
33 14 20S 137 59 42E

AERODROME CHART
PORT PIRIE, SA (YPIR)

FIA ML CEN 123.9	CTAF+AFRU 126.9	AFRU+PAL 126.9	Bearings are Magnetic Elevations in FEET AMSL
---------------------	--------------------	-------------------	--



RWY	AERODROME LIGHTING	
		ABN : FLG W 3 SEC
	RL : PAL 119.6 , SDBY (30 MIN PN)	
08 <small>083</small>	LIRL	
<small>263</small> 26	LIRL	
17 <small>173</small>	NIL	
<small>353</small> 35	NIL	
03 <small>034</small>	NIL	
<small>214</small> 21	NIL	

NOTES

1. TAXIWAY LIGHTING TO MAIN APRON ONLY.

Changes: AFRU+PAL FREQ, NOTES.

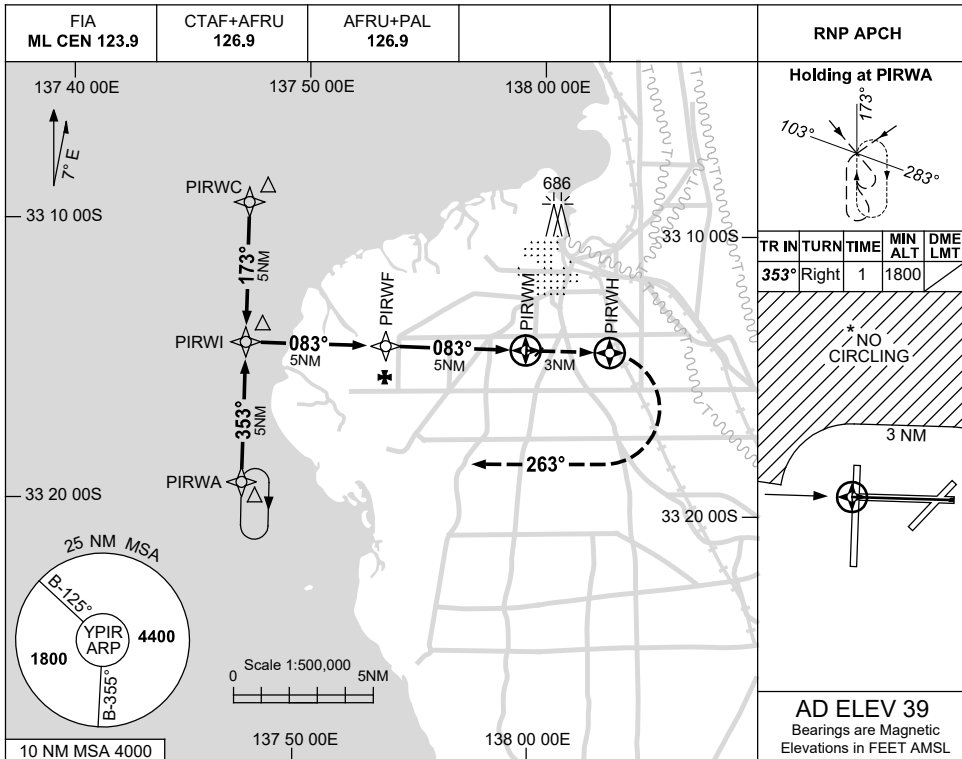
PIRAD01-176

USE QNH

RNP RWY 08

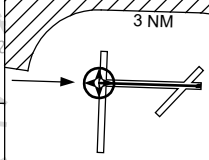
PORT PIRIE, SA (YPIR)

7 SEP 2023



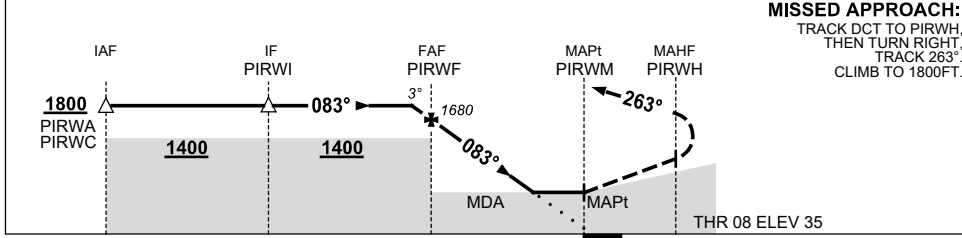
TR IN	TURN	TIME	MIN ALT	DME LMT
353°	Right	1	1800	

* NO CIRCLING



AD ELEV 39
Bearings are Magnetic
Elevations in FEET AMSL

NM TO NEXT WPT	0.4	PIRWF	4	3	2	1.5	PIRWM						
ALT (3° APCH PATH)	1800	1680	1360	1040	720	550							



MISSED APPROACH:
TRACK DCT TO PIRWH,
THEN TURN RIGHT,
TRACK 263°,
CLIMB TO 1800FT.

CATEGORY	A	B	C	D
LNAV	550 (511-2.9)			NOT APPLICABLE
CIRCLING *	660 (621-2.4)		830 (791-4.0)	
ALTERNATE	(1121-4.4)		(1291-6.0)	

- NOTES**
- MAX IAS: INITIAL : 210KT.
 - NO CIRCLING N OF RWY 08/26 BEYOND 3NM.

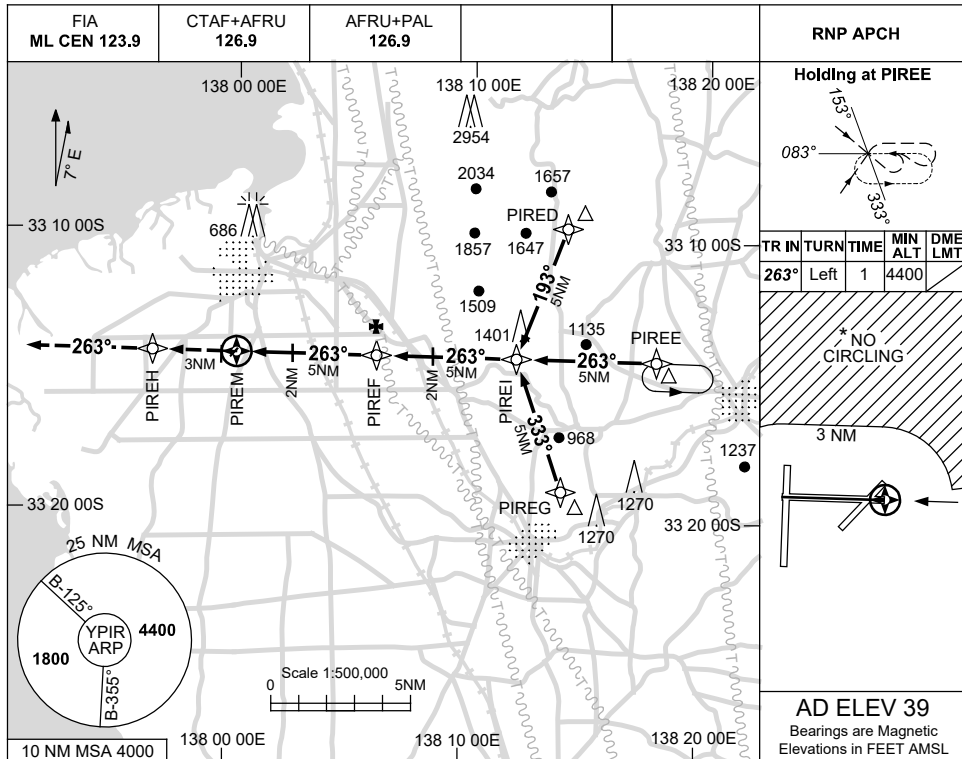
Changes: AFRU+PAL FREQ.

PIRGN01-176

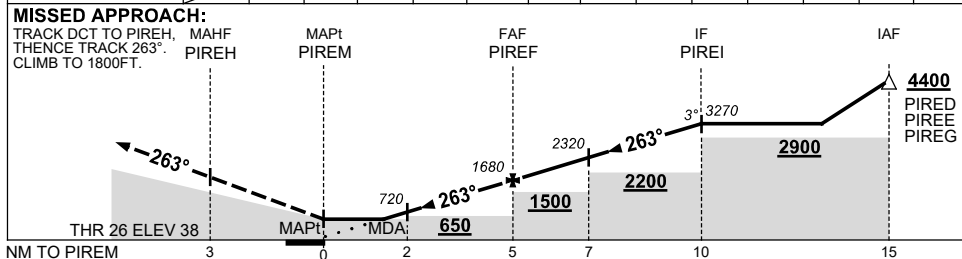
USE QNH

RNP RWY 26
PORT PIRIE, SA (YPIR)

7 SEP 2023



NM TO NEXT WPT	PIREM	1.5	2	3	4	PIREF	1	2	3	4	PIREI		
ALT (3° APCH PATH)		550	720	1040	1360	1680	2000	2320	2640	2950	3270		



NOTES

CATEGORY	A	B	C	D
LNAV	550 (511-2.9)			NOT APPLICABLE
CIRCLING *	660 (621-2.4)	830 (791-4.0)		
ALTERNATE	(1121-4.4)		(1291-6.0)	

- 1. MAX IAS: INITIAL : 210KT.
- * 2. NO CIRCLING N OF RWY 08/26 BEYOND 3NM.

Changes: AFRU+PAL FREQ.

PIRGN02-176