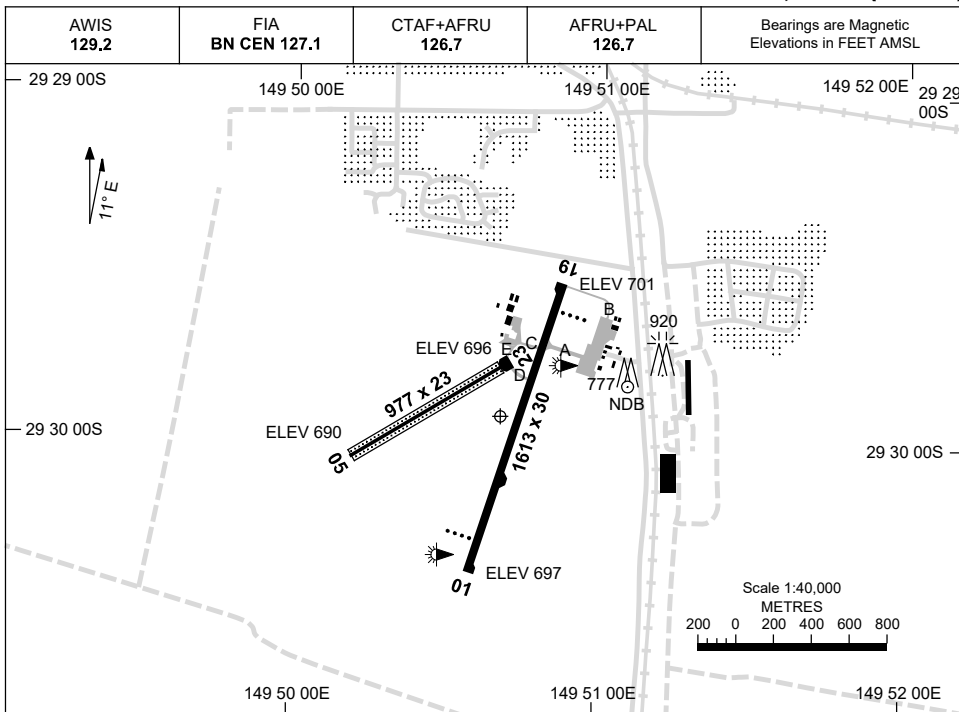


2 DEC 2021

AD ELEV 701
29 29 56S 149 50 41E

AERODROME CHART
MOREE, NSW (YMOR)



	AERODROME LIGHTING
RWY	TAXIWAY : BLUE EDGE TWY A ONLY RL : AFRU+PAL 126.7 , SDBY (15 SEC)
01 ⁰⁰⁷ 187 19	PAPI 3.0° 51FT LIRL PAPI 3.0° 51FT LIRL
05 ⁰⁴⁷ 227 23	NIL NIL

NOTES

1. RWY 05/23 CENTRAL 10M SEALED.

CAUTION: KANGAROO HAZARD EXISTS.

Changes: CAUTION NOTE.

MORAD01-169

GNSS ARRIVAL PROCEDURES MOREE, NSW (YMOR)

1 MAR 2018

AWIS 129.2	FIA BN CEN 127.1	CTAF+AFRU 126.7	AFRU+PAL 126.7		Bearings are Magnetic Elevations in FEET AMSL
---------------	---------------------	--------------------	-------------------	--	--

REFERENCE WAYPOINT MOR NDB

10 NM MSA 2100

AD ELEV 701

ALL TRACKS TO MOR NDB											<p>MISSED APPROACH: CLIMB ON TRACK TO 3500FT.</p>									
	NM FM NDB	25	15	10	5	0														
CIRCLING MINIMA			A,B: 1350-2.4			C: 1440-4.0			D: N/A											
NM FM NDB	9.3	9	8	7	6	5	4	3	2.8	2.5										
ALT (3° APCH PATH)	3500	3410	3100	2780	2460	2140	1820	1500	1440	1350										

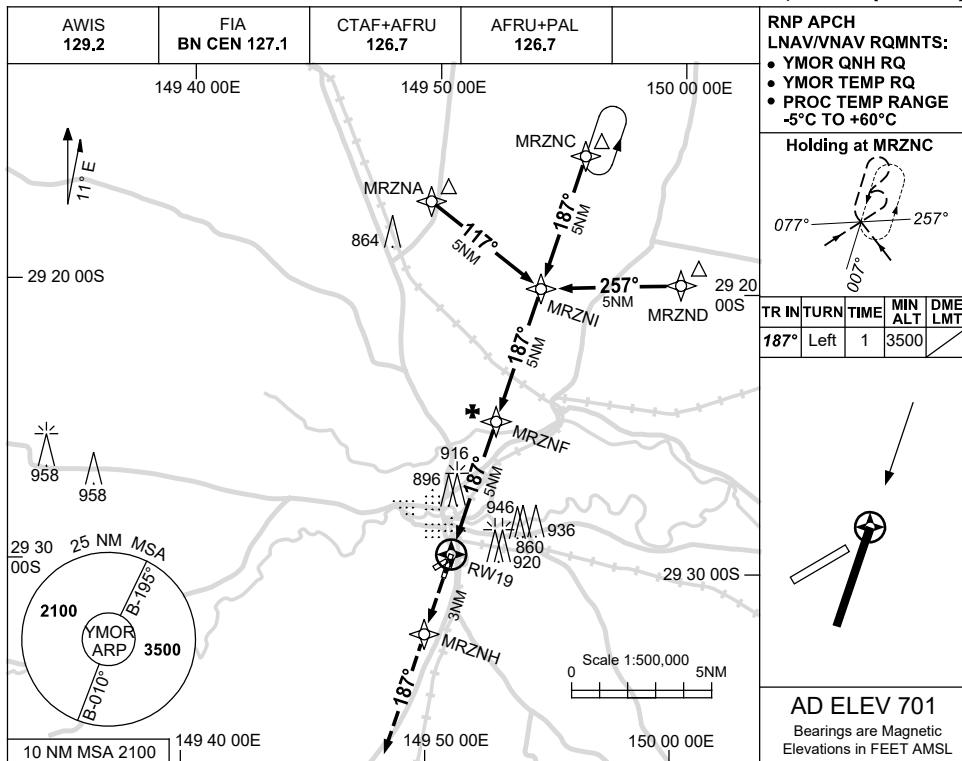
Changes: AFRU+PAL.

MORDG01-154

USE QNH

RNP RWY 19
MOREE, NSW (YMOR)

2 DEC 2021

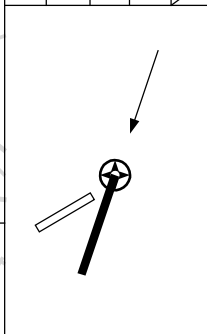


**RNP APCH
 LNAV/VNAV RQMNTS:**

- YMOR QNH RQ
- YMOR TEMP RQ
- PROC TEMP RANGE -5°C TO +60°C

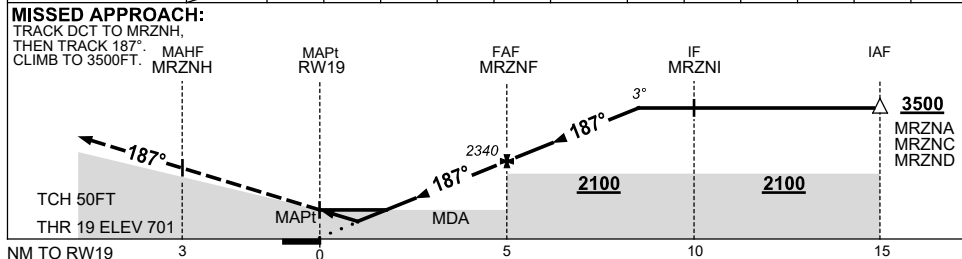
Holding at MRZNC

TR IN	TURN	TIME	MIN ALT	DME LMT
187°	Left	1	3500	



AD ELEV 701
 Bearings are Magnetic
 Elevations in FEET AMSL

NM TO NEXT WPT	RWY19	0.9	1.6	2	3	4	MRZNF	1	2	3	3.6		
ALT (3° APCH PATH)		1050	1270	1390	1710	2020	2340	2660	2980	3300	3500		



NOTES

CATEGORY	A	B	C	D
LNAV/VNAV		1050 (349-1.9)		NOT APPLICABLE
LNAV		1270 (569-3.2)		
CIRCLING	1350 (649-2.4)		1440 (739-4.0)	
ALTERNATE	(1149-4.4)		(1239-6.0)	

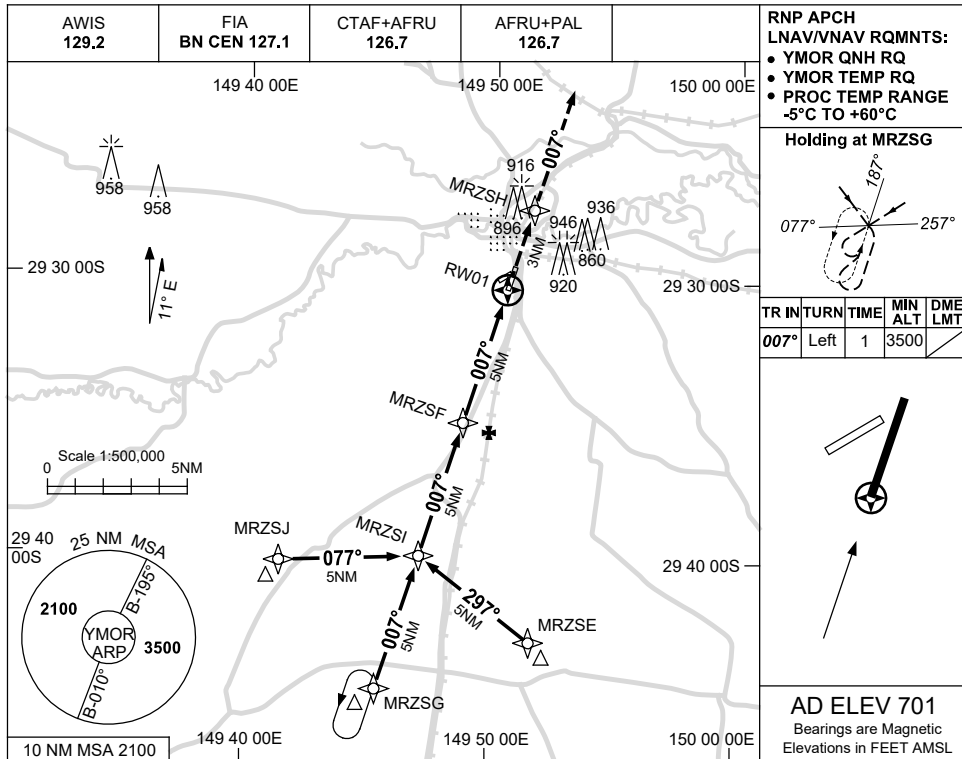
1. MAX IAS:
 INITIAL : 210KT.

Changes: CHART TITLE, PBN SPECIFICATION BOX. MORGN01-169

USE QNH

RNP RWY 01
MOREE, NSW (YMOR)

2 DEC 2021

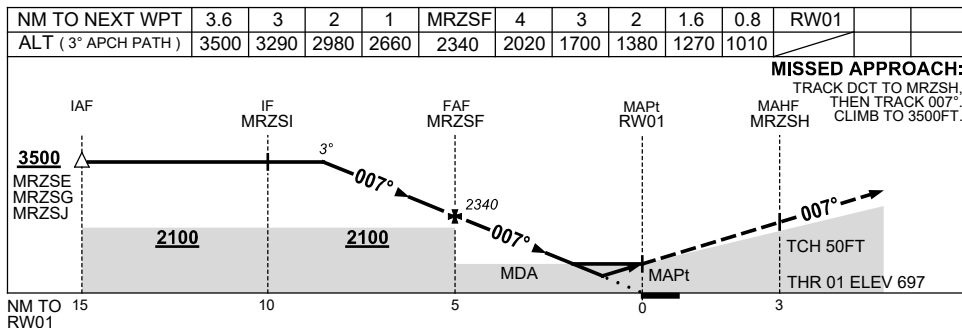


RNP APCH
 LNAV/VNAV RQMNTS:
 • YMOR QNH RQ
 • YMOR TEMP RQ
 • PROC TEMP RANGE
 -5°C TO +60°C

Holding at MRZSG

TR	TURN	TIME	MIN ALT	DME LMT
007°	Left	1	3500	

AD ELEV 701
 Bearings are Magnetic
 Elevations in FEET AMSL



NOTES

1. MAX IAS:
 INITIAL : 210KT.

CATEGORY	A	B	C	D
LNAV/VNAV		1010 (313-1.7)		NOT APPLICABLE
LNAV		1270 (569-3.2)		
CIRCLING	1350 (649-2.4)		1440 (739-4.0)	
ALTERNATE	(1149-4.4)		(1239-6.0)	

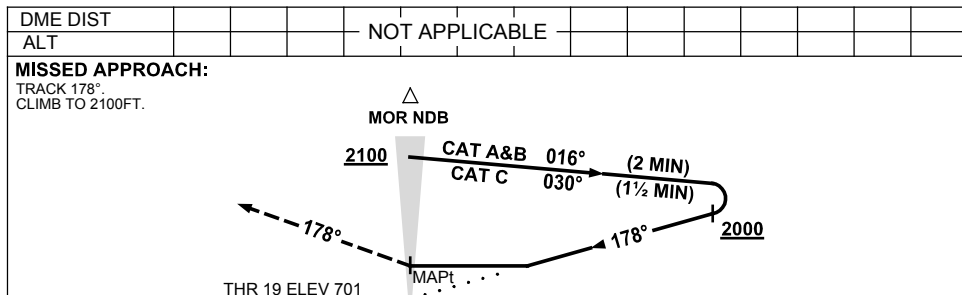
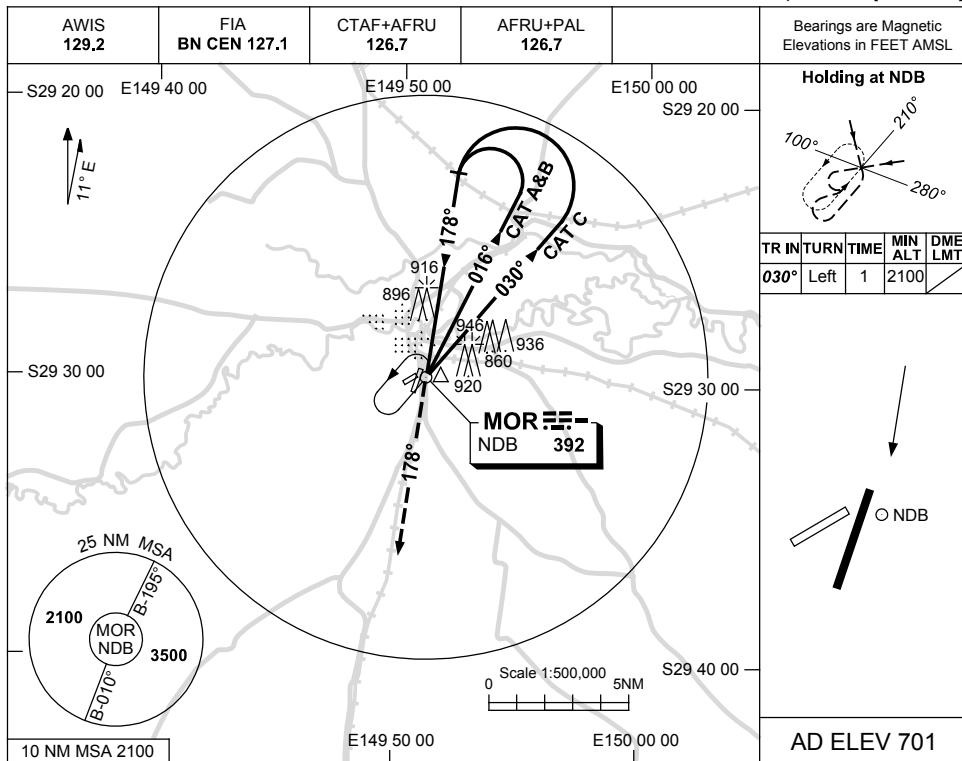
Changes: CHART TITLE, PBN SPECIFICATION BOX.

MORG02-169

USE QNH

NDB RWY 19
MOREE, NSW (YMOR)

1 MAR 2018



NOTES

CATEGORY	A	B	C	D
S-I NDB	1340 (639-3.6)			NOT APPLICABLE
CIRCLING	1350 (649-2.4)	1440 (739-4.0)		
ALTERNATE	(1149-4.4)		(1239-6.0)	

1. MAX IAS:
 INITIAL : 210KT.

Changes: AFRU+PAL.

MORNB01-154