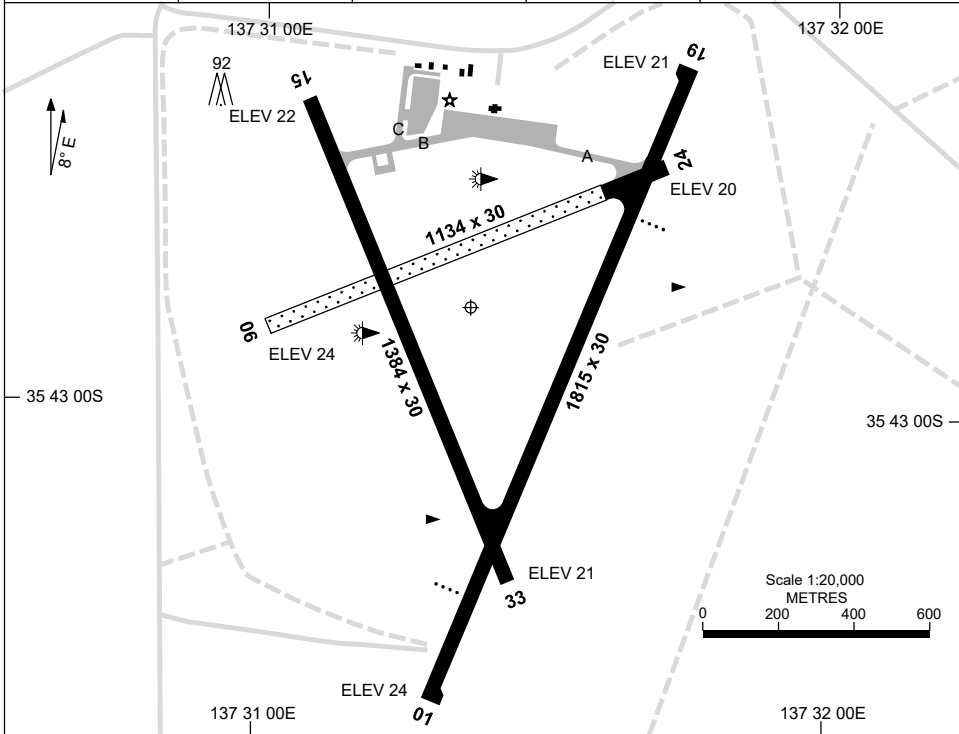


9 SEP 2021

AD ELEV 24
35 42 50S 137 31 18E

KINGSCOTE/KANGAROO ISLAND, SA (YKSC)
AERODROME CHART

AWIS 127.45	FIA ML CEN 123.05	CTAF+AFRU 126.0	PAL 122.3	Bearings are Magnetic Elevations in FEET AMSL
----------------	----------------------	--------------------	--------------	--



		AERODROME LIGHTING	
RWY		ABN : FLG W 6 SEC	
		TAXIWAYS : BLUE EDGE TWY A	
		RL : PAL 122.3 , SDBY , PTBL IN EMERG	
01 ⁰¹⁴		PAPI 3.0° 47FT LIRL	
¹⁹⁴ 19		PAPI 3.0° 47FT LIRL	
06 ⁰⁵⁹		NIL	
²³⁹ 24		NIL	
15 ¹⁴⁹		NIL	
³²⁹ 33		NIL	

NOTES

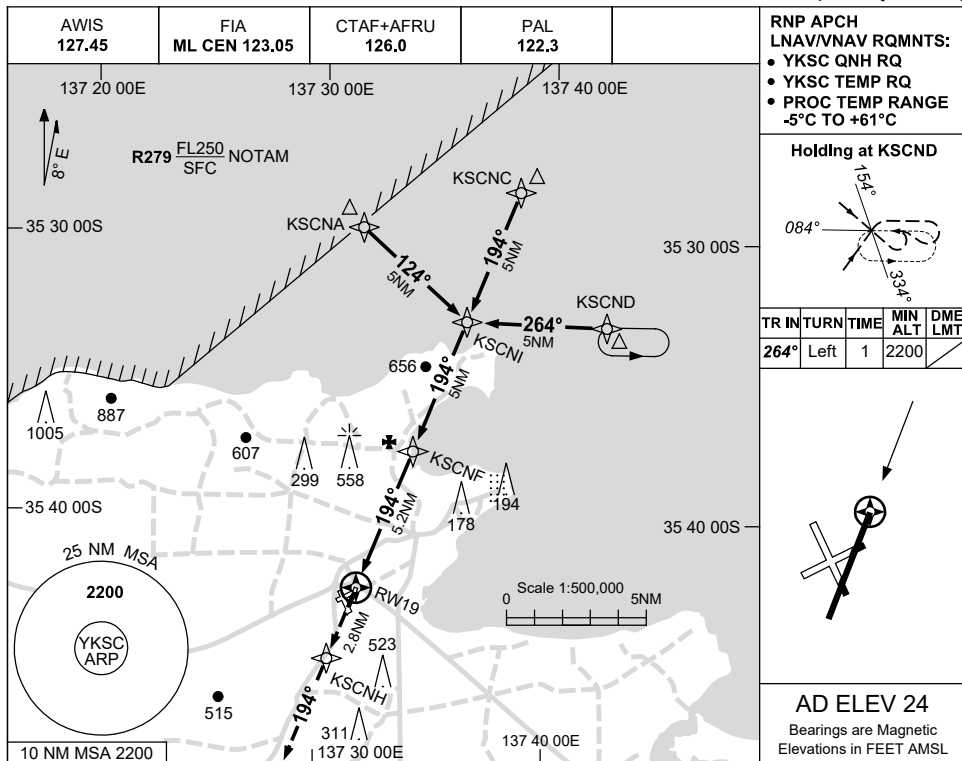
Changes: PAPI, SECONDARY WDI PSN.

KSCAD01-168

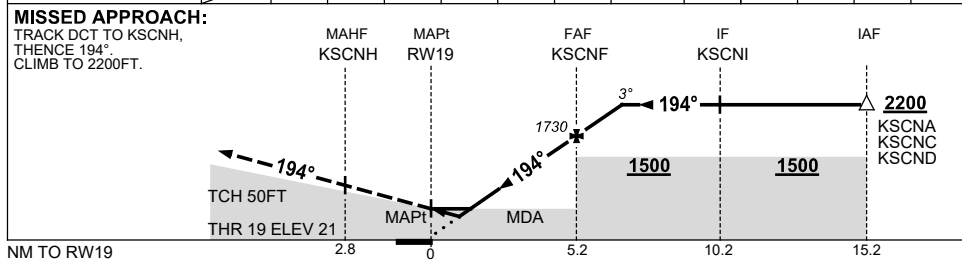
USE QNH KINGSCOTE/KANGAROO ISLAND, SA (YKSC)

RNP RWY 19

1 DEC 2022



NM TO NEXT WPT	RW19	0.8	1	1.7	2	3	4	KSCNF	1	1.5			
ALT (3° APCH PATH)		340	390	600	710	1030	1340	1730	2050	2200			



NOTES

CATEGORY	A	B	C	D	
LNAV/VNAV		340 (319-1.8)			NOT APPLICABLE
LNAV		600 (576-3.3)			
CIRCLING		840 (816-2.4)	1070 (1046-4.0)		
ALTERNATE		(1316-4.4)	(1546-6.0)		

1. MAX IAS:
INITIAL : 230KT.
2. KSCNA INITIAL
NOT AVBL
WHEN R279 ACT

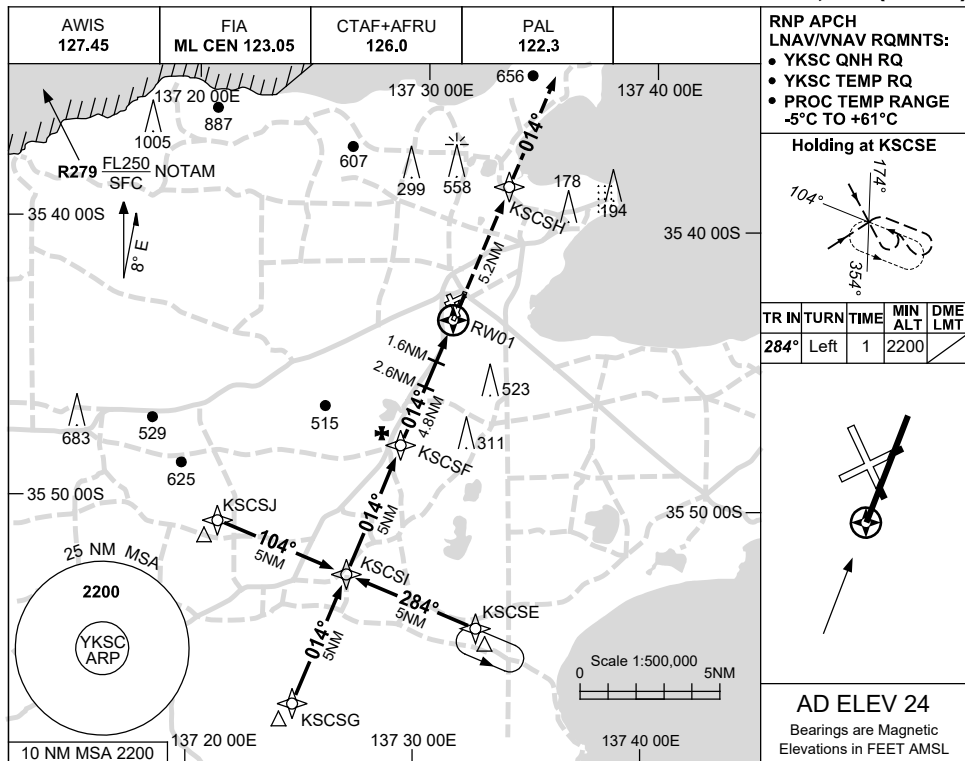
Changes: CHART TITLE, PBN SPECIFICATION BOX.

KSCGN01-173

**USE QNH
KINGSCOTE/KANGAROO ISLAND, SA (YKSC)**

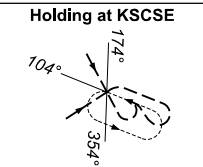
RNP RWY 01

1 DEC 2022

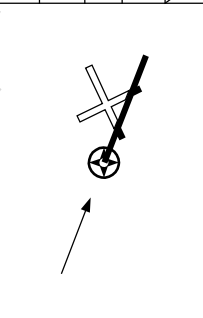


**RNP APCH
LNAV/VNAV RQMTS:**

- YKSC QNH RQ
- YKSC TEMP RQ
- PROC TEMP RANGE -5°C TO +61°C

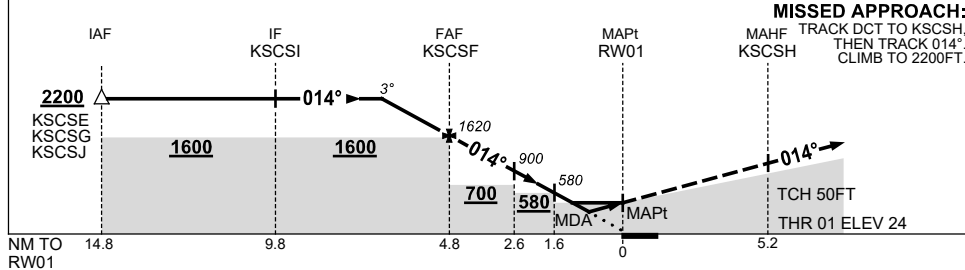


TR IN	TURN	TIME	MIN ALT	DME LMT
284°	Left	1	2200	



AD ELEV 24
Bearings are Magnetic
Elevations in FEET AMSL

NM TO NEXT WPT	1.8	1	KSCSF	4	3	2.6	1.6	1.4	0.8	RWY01
ALT (3° APCH PATH)	2200	1930	1620	1350	1030	900	580	530	340	



MISSED APPROACH:
TRACK DCT TO KSCSH,
THEN TRACK 014°,
CLIMB TO 2200FT.

TCH 50FT
THR 01 ELEV 24

NOTES

1. MAX IAS:
INITIAL : 210KT.

CATEGORY	A	B	C	D
LNAV/VNAV		340 (316-1.8)		NOT APPLICABLE
LNAV		530 (506-2.9)		
CIRCLING	840 (816-2.4)		1070 (1046-4.0)	
ALTERNATE		(1316-4.4)	(1546-6.0)	

Changes: CHART TITLE, PBN SPECIFICATION BOX.

KSCGN02-173