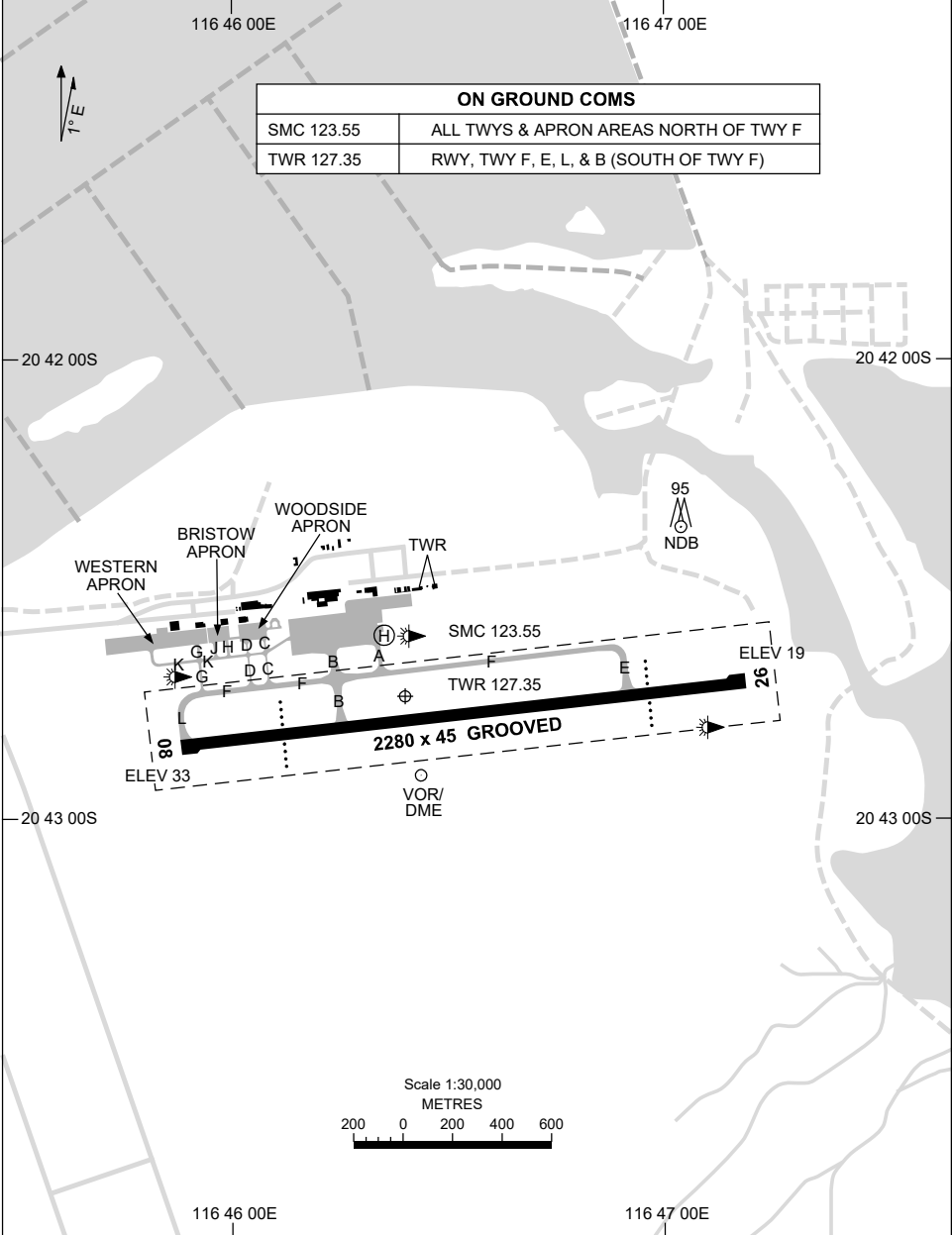


5 NOV 2020

AD ELEV 33  
20 42 44S 116 46 24E

AERODROME CHART - Page 1  
**KARRATHA, WA (YPKA)**

WATIR (H24) 135.85	ATIS (TWR HR) 134.55	TWR 127.35	SMC 123.55	FIA (AH) ML CEN 122.4	CTAF+AFRU (AH) AFRU+PAL (AH) 127.35	Bearings are Magnetic Elevations in FEET AMSL
-----------------------	-------------------------	---------------	---------------	--------------------------	---	--



ON GROUND COMS	
SMC 123.55	ALL TWYS & APRON AREAS NORTH OF TWY F
TWR 127.35	RWY, TWY F, E, L, & B (SOUTH OF TWY F)

Changes: RWY 08 AND RWY26 THR ELEVATIONS, GRID COORD FORMAT.

PKAAD01-165

7 SEP 2023

AD ELEV 33  
20 42 44S 116 46 24E

AERODROME CHART - Page 2  
**KARRATHA, WA (YPKA)**

WATIR (H24) 135.85	ATIS (TWR HR) 134.55	TWR 127.35	SMC 123.55	FIA (AH) ML CEN 122.4	CTAF+AFRU (AH) AFRU+PAL (AH) 127.35	Bearings are Magnetic Elevations in FEET AMSL
-----------------------	-------------------------	---------------	---------------	--------------------------	---	--

--	--	--	--	--	--	--

<b>AERODROME LIGHTING</b>						
---------------------------	--	--	--	--	--	--

<b>RWY</b>	TAXIWAYS : BLUE EDGE					
	RL : AFRU+PAL 127.35 , SDBY (7 SEC) , PTBL (EMERG ONLY , 60 MIN PN ROTARY , 120 MIN PN FIXED WING).					

<b>08</b> <sup>083</sup>	PAPI BOTH SIDES 3.0° 62FT MIRL PTBL					
263 <b>26</b>	PAPI BOTH SIDES 3.0° 62FT MIRL PTBL					

<b>NOTES</b>						
--------------	--	--	--	--	--	--

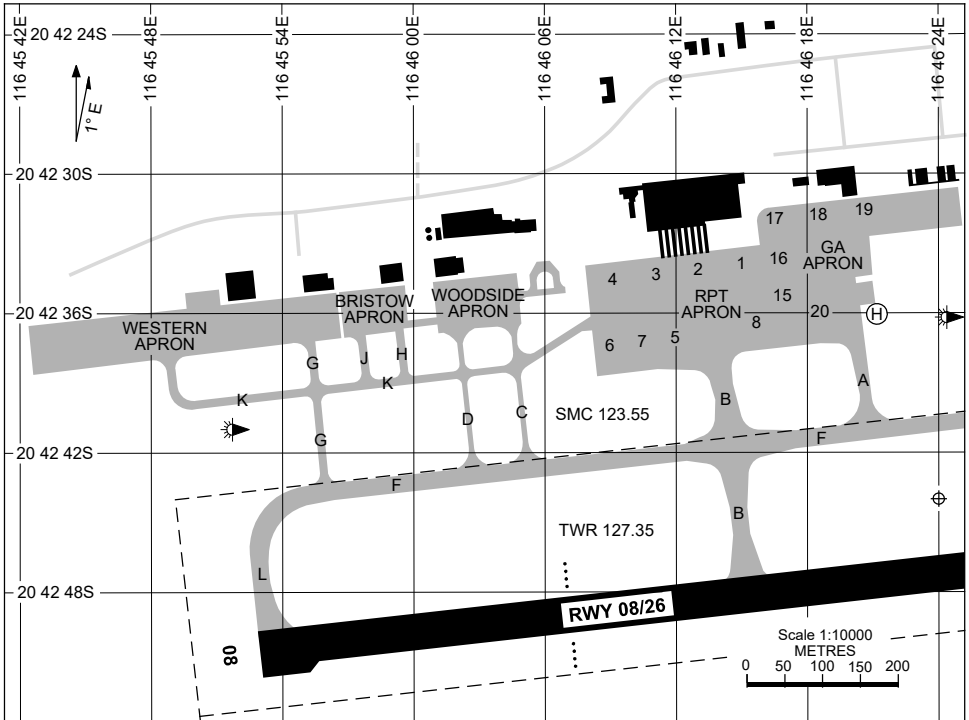
1. LANDING ACFT TO REMAIN ON TWR FREQ UNTIL VACATED TWY FOXTROT AND THEN MONITOR GND UNLESS INSTRUCTED OTHERWISE.

Changes: NOTES.

PKAAD02-176

24 MAR 2022

APRON CHART  
KARRATHA, WA (YPKA)



PARKING POSITION INFORMATION

STAND	CO-ORDINATES		ELEV (ft)	CAPACITY	HYDRANT FUEL	DOCKING SYSTEM
1	20 42 33.75S	116 46 14.89E	23	A320/B738	F35	MARSHALLER
2	20 42 33.97S	116 46 12.83E	23	A320/B738	F35	MARSHALLER
3	20 42 34.09S	116 46 10.68E	24	A320/B738	F35	MARSHALLER
4	20 42 34.31S	116 46 08.67E	24	A320/B738	F35	MARSHALLER
5	20 42 37.35S	116 46 10.60E	24	A320/B738	TANKER	MARSHALLER
5A	20 42 37.61S	116 46 11.33E	24	E170/B463/F50	TANKER	MARSHALLER
6	20 42 37.57S	116 46 08.47E	25	A320/B738	TANKER	MARSHALLER
6A	20 42 37.89S	116 46 09.15E	25	E170/B463/F50	TANKER	MARSHALLER
7	20 42 38.13S	116 46 09.57E	24	B763/IL76/A332/A333 B744/B789/AN124	TANKER	MARSHALLER
8	20 42 35.49S	116 46 16.18E	24	B463/E170/DH8D/F100	TANKER	MARSHALLER
15	20 42 34.34S	116 46 16.52E	23	DHC6/PC12	TANKER	PILOT STOP BAR
15A	20 42 34.59S	116 46 16.84E	24	DHC6/PC12	TANKER	PILOT STOP BAR
16	20 42 33.28S	116 46 16.40E	23	DHC6/PC12	TANKER	PILOT STOP BAR
16A	20 42 33.52S	116 46 16.71E	23	DHC6/PC12	TANKER	PILOT STOP BAR
17	20 42 32.18S	116 46 16.27E	21	PC12/H25B	TANKER	PILOT STOP BAR
17A	20 42 32.43S	116 46 16.60E	22	PC12/H25B	TANKER	PILOT STOP BAR
18	20 42 31.89S	116 46 17.72E	21	B350/B190	TANKER	PILOT STOP BAR
18A	20 42 31.83S	116 46 18.33E	22	B350/B190	TANKER	PILOT STOP BAR
19	20 42 31.70S	116 46 20.39E	21	B350/B190	TANKER	PILOT STOP BAR
19A	20 42 31.66S	116 46 20.86E	21	B350/B190	TANKER	PILOT STOP BAR
20	20 42 35.78S	116 46 18.32E	24	E120/SW4	TANKER	PILOT STOP BAR
20A	20 42 35.72S	116 46 18.87E	24	E120/SW4	TANKER	PILOT STOP BAR

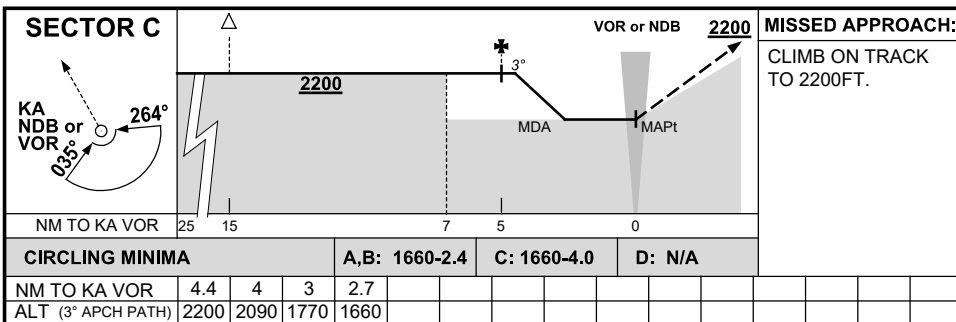
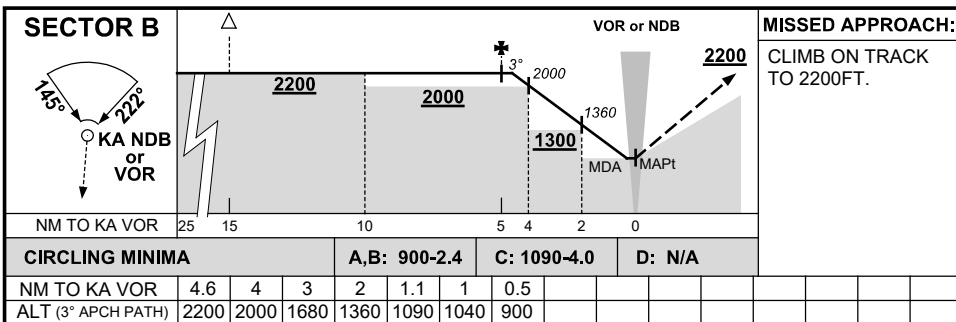
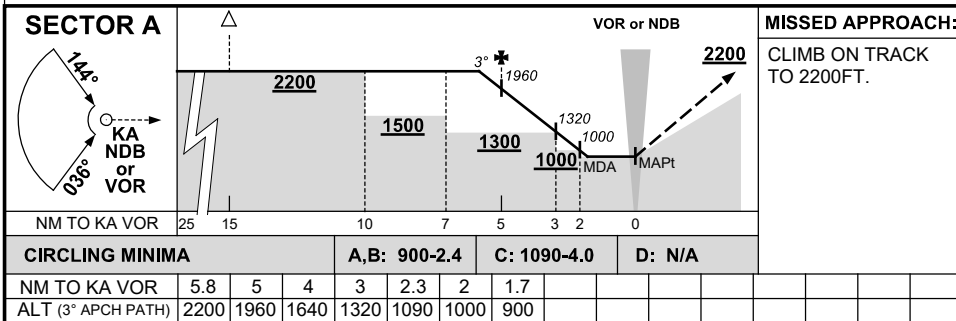
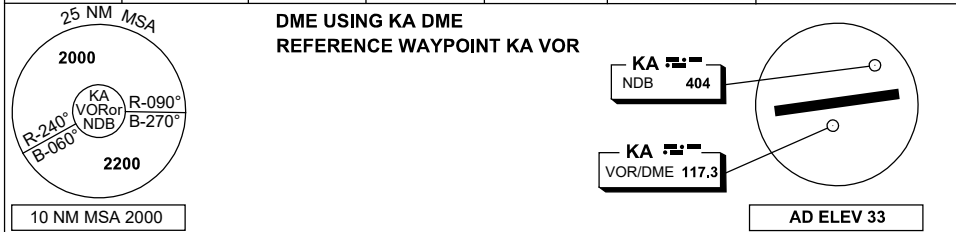
Changes: BAY 6A COORDINATES.

PKAAP01-170

# DME or GNSS ARRIVAL PROCEDURES KARRATHA, WA (YPKA) Page 1

5 NOV 2020

WATIR (H24) 135.85	ATIS (TWR HR) 134.55	TWR 127.35	SMC 123.55	FIA (AH) ML CEN 122.4	CTAF+AFRU (AH) AFRU+PAL (AH) 127.35	Bearings are Magnetic Elevations in FEET AMSL
-----------------------	-------------------------	---------------	---------------	--------------------------	---	--



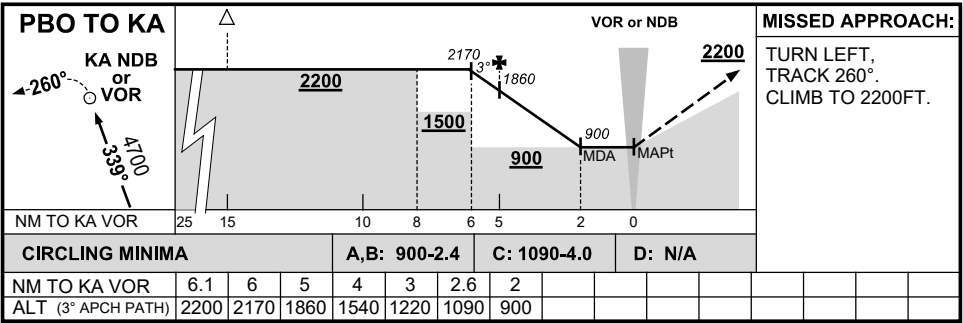
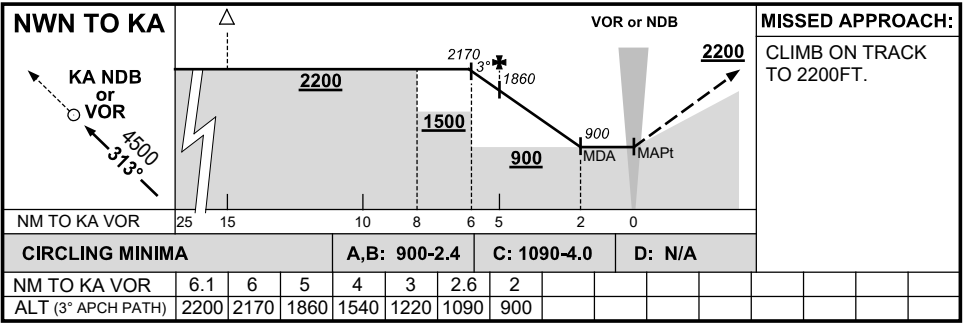
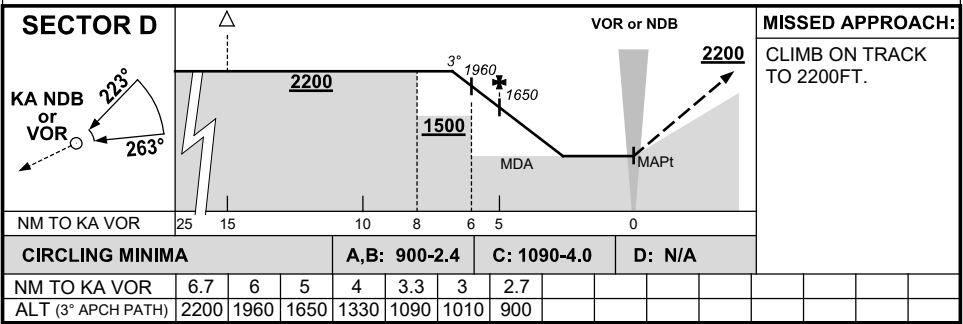
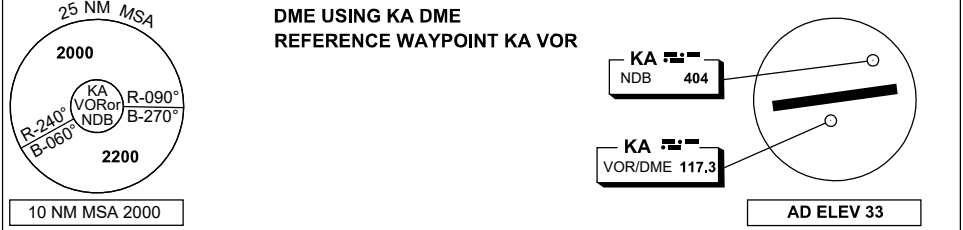
Changes: AD ELEV.

PKADG01-165

# DME or GNSS ARRIVAL PROCEDURES KARRATHA, WA (YPKA) Page 2

5 NOV 2020

WATIR (H24) 135.85	ATIS (TWR HR) 134.55	TWR 127.35	SMC 123.55	FIA (AH) ML CEN 122.4	CTAF+AFRU (AH) AFRU+PAL (AH) 127.35	Bearings are Magnetic Elevations in FEET AMSL
-----------------------	-------------------------	---------------	---------------	--------------------------	---	--



Changes: AD ELEV. PKADG02-165

## DME or GNSS ARRIVAL PROCEDURES KARRATHA, WA (YPKA) Page 3

5 NOV 2020

WATIR (H24) 135.85	ATIS (TWR HR) 134.55	TWR 127.35	SMC 123.55	FIA (AH) ML CEN 122.4	CTAF+AFRU (AH) AFRU+PAL (AH) 127.35	Bearings are Magnetic Elevations in FEET AMSL
-----------------------	-------------------------	---------------	---------------	--------------------------	---	--

**DME USING KA DME  
REFERENCE WAYPOINT KA VOR**

10 NM MSA 2000

AD ELEV 33

**VETEL TO KA**

**MISSED APPROACH:**  
TURN RIGHT,  
TRACK 030°,  
CLIMB TO 2200FT.

NM TO KA VOR	25	15	10	8	6	5	4	0															
<b>CIRCLING MINIMA</b>				<b>A,B: 900-2.4</b>		<b>C: 1090-4.0</b>		<b>D: N/A</b>															
NM TO KA VOR	6.7	6	5	4	3.3	3	2.7																
ALT (3° APCH PATH)	2200	1960	1650	1330	1090	1010	900																

Changes: AD ELEV, Editorial.

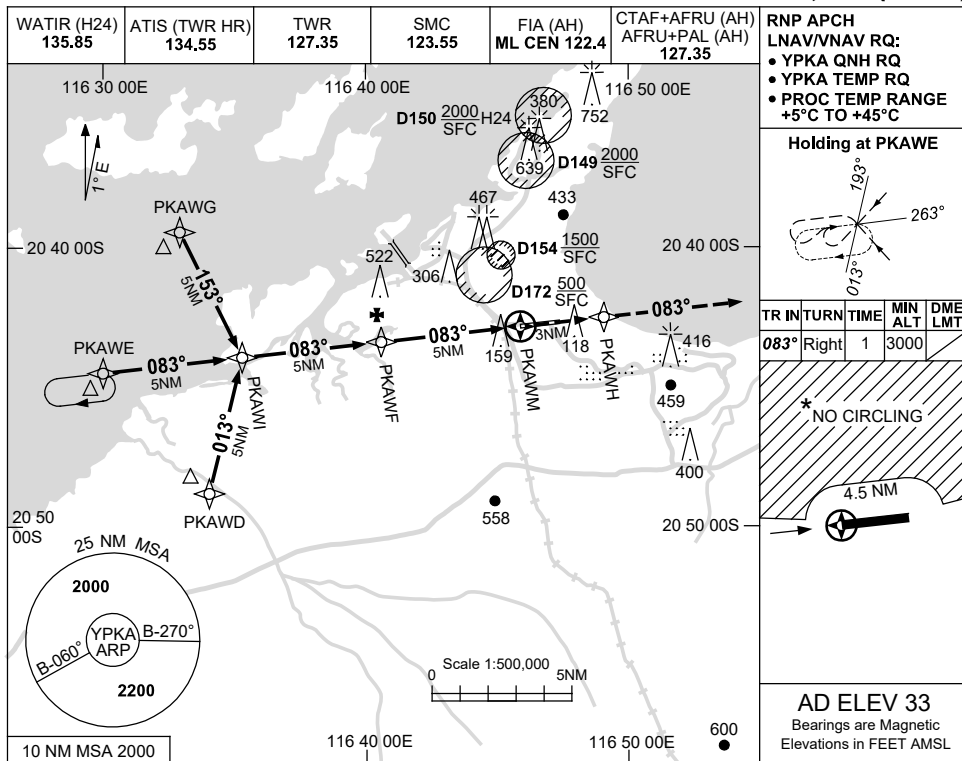


USE QNH

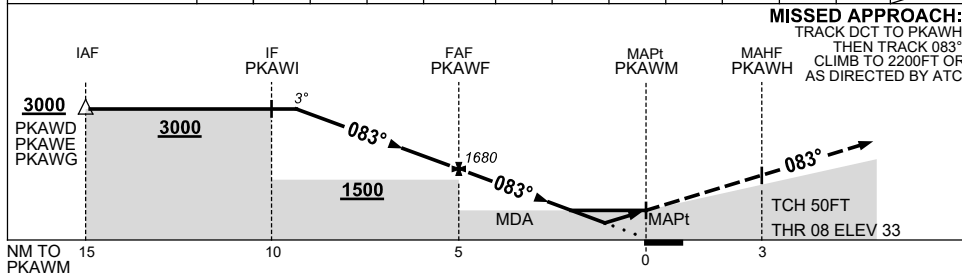
RNP RWY 08

30 NOV 2023

KARRATHA, WA (YPKA)



NM TO NEXT WPT	4.2	3	2	1	PKAWF	4	3	2	1.5	1	0.9	0.8	PKAWM
ALT (3° APCH PATH)	3000	2630	2310	1990	1680	1360	1040	720	550	400	370	350	



**NOTES**

CATEGORY	A	B	C	D
LNAV/VNAV		350 (317-1.8)		370 (337-1.9)
LNAV		550 (517-2.9)		
CIRCLING *	860 (827-2.4)		1090 (1057-4.0)	1090 (1057-5.0)
ALTERNATE	(1327-4.4)		(1557-6.0)	(1557-7.0)

1. MAX IAS:  
INITIAL : 210KT.
2. D154 MAYBE IN USE WITHOUT NOTAM PROMULGATION.
- \*3. NO CIRCLING N OF RWY 08/26 BEYOND 4.5NM.

Changes: CHART TITLE, PBN SPECIFICATION BOX, Editorial.

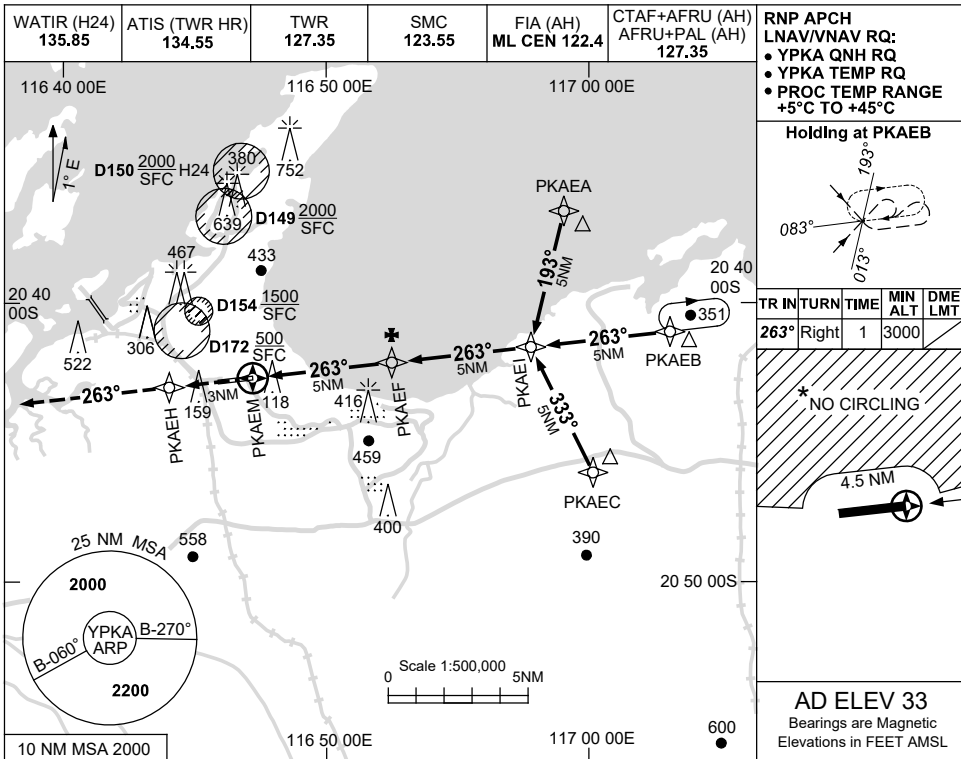
PKAGN01-177

USE QNH

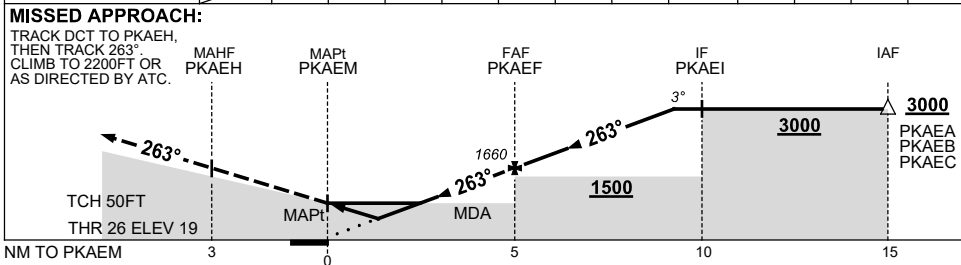
RNP RWY 26

30 NOV 2023

KARRATHA, WA (YPKA)



NM TO NEXT WPT	PKAEM	0.8	0.9	1	1.5	2	3	4	PKAEF	1	2	3	4.2
ALT (3° APCH PATH)		350	370	390	550	710	1020	1340	1660	1980	2300	2620	3000



CATEGORY	A	B	C	D
LNAV/VNAV	350 (331-1.8)		370 (351-2.0)	
LNAV	550 (531-3.0)			
CIRCLING *	860 (827-2.4)		1090(1057-4.0)	1090(1057-5.0)
ALTERNATE	(1327-4.4)		(1557-6.0)	(1557-7.0)

- NOTES**
1. MAX IAS: INITIAL : 210KT.
  2. D154 MAYBE IN USE WITHOUT NOTAM PROMULGATION.
  - \*3. NO CIRCLING N OF RWY 08/26 BEYOND 4.5NM.

Changes: CHART TITLE, PBN SPECIFICATION BOX, Editorial.

PKAGN02-177

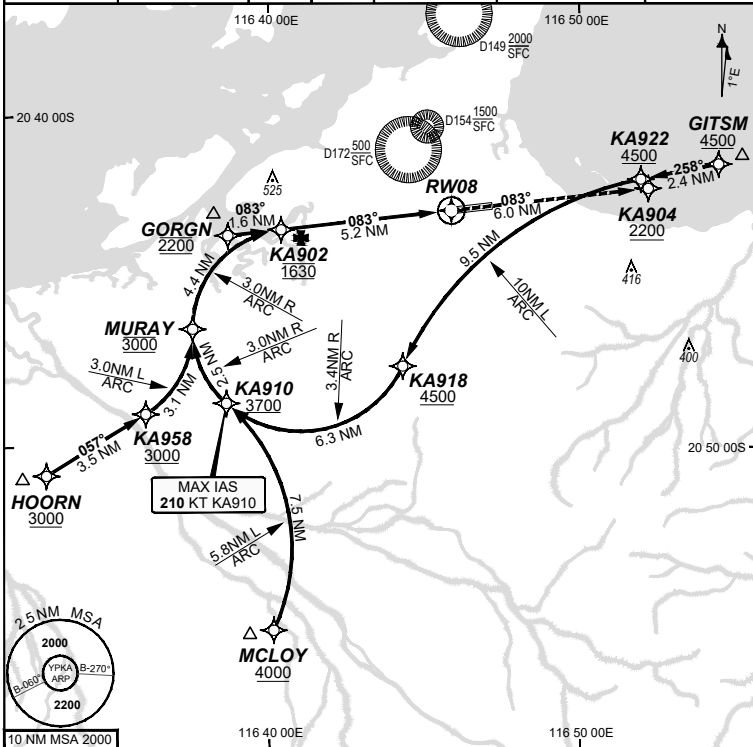


**FOR CASA APPROVED OPERATORS ONLY**

30 NOV 2023

USE QNH

WATIR (H24)	ATIS (TWR HR)	TWR	SMC	FIA (AH)	CTAF+AFRU (AH) AFRU+PAL (AH)	RNV U 08 THR ELEV 33	RNP AR APCH - RF RQ - YPKA ACT QNH RQ - YPKA ACT TEMP RQ - PROC TEMP RANGE +8°C TO +46°C
135.85	134.55	127.35	123.55	ML CEN 122.4	127.35		

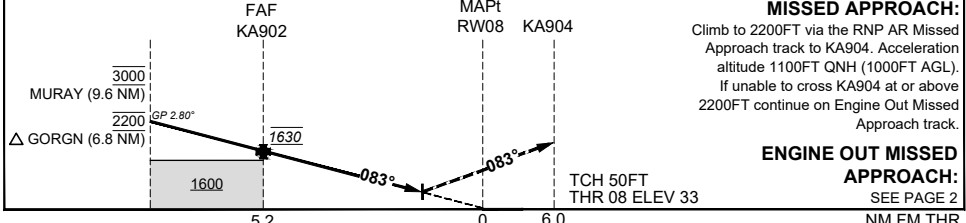


Holding as directed by ATC

TR	INT	TURN	TIME	MIN ALT	DME LMT

AD ELEV 33  
Bearings are Magnetic  
Elevations in FEET AMSL

10.NM MSA 2000	MURAY	GORGN	KA902	0.7	RW08				
ALT (2.80° APCH PATH)	3000	2200	1630	297					



CATEGORY	A	B	C	D
RNP (0.30)			DA(H) 297 (264 - 1.4)	DA(H) 297 (264 - 1.4)
		N/A		
CIRCLING			NOT AUTHORISED	NOT AUTHORISED
ALTERNATE				

- NOTES**
- Lateral transition to MAP must not be initiated prior to DA/H PSN.
  - APCH Path does not coincide with PAPI glide path 3°.
  - MIN MAP GRAD (AE) for RNP 0.30 5.1% to 2200 FT.

202308032313 COPYRIGHT 2023 GE DIGITAL. ALL RIGHTS RESERVED. GE PROPRIETARY INFORMATION  
Changes: Chart reformatting, PROC NAME, RNAV (RNP) to RNP AR, APP Notes, DA. PKAGN03-177

**DO NOT USE FOR NAVIGATION**  
Prepared by GE Aviation

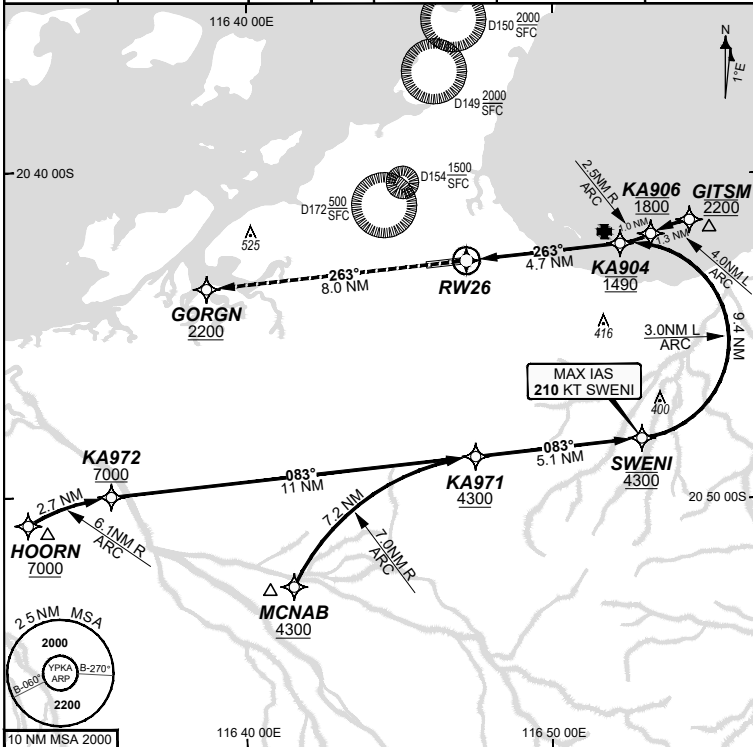


**FOR CASA APPROVED  
OPERATORS ONLY**

30 NOV 2023

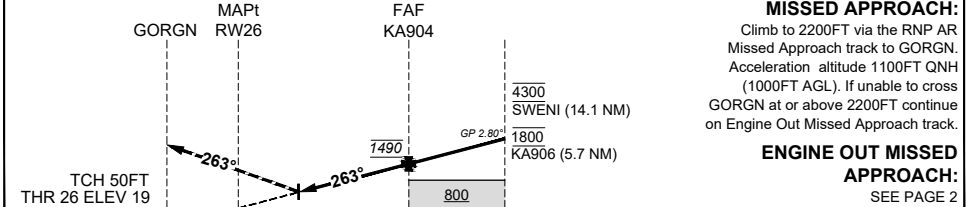
USE QNH

WATIR (H24) <b>135.85</b>	ATIS (TWR HR) <b>134.55</b>	TWR <b>127.35</b>	SMC <b>123.55</b>	FIA (AH) <b>ML CEN 122.4</b>	CTAF+AFRU (AH) AFRU+PAL (AH) <b>127.35</b>	RNV U 26 <b>THR ELEV 19</b>	RNP AR APCH - RF RQ - YPKA ACT QNH RQ - YPKA ACT TEMP RQ - PROC TEMP RANGE +8°C TO +46°C
------------------------------	--------------------------------	----------------------	----------------------	---------------------------------	--	--------------------------------	---



Holding as directed by ATC				
TR IN	TURN	TIME	MIN ALT	DME LMT
<b>AD ELEV 33</b> Bearings are Magnetic Elevations in FEET AMSL				

ALT (2.80° APCH PATH)	RWY26	0.7	KA904	KA906	SWENI		
		269	1490	1800	4300		



**MISSED APPROACH:**  
Climb to 2200FT via the RNP AR Missed Approach track to GORGN. Acceleration altitude 1100FT QNH (1000FT AGL). If unable to cross GORGN at or above 2200FT continue on Engine Out Missed Approach track.

**ENGINE OUT MISSED APPROACH:**  
SEE PAGE 2

NM FM THR

CATEGORY	A	B	C	D
RNP (0.30)			DA(H) <b>269</b> (250 - 1.3)	DA(H) <b>269</b> (250 - 1.3)
CIRCLING	N/A		NOT AUTHORISED	NOT AUTHORISED
ALTERNATE				

**NOTES**

1. Lateral transition to MAP must not be initiated prior to DA/H PSN.
2. APCH Path does not coincide with PAPI glide path 3°.
3. MIN MAP GRAD (AE) for RNP 0.30 4.0% to 2200 FT.

202308032315 COPYRIGHT 2023 GE DIGITAL. ALL RIGHTS RESERVED. GE PROPRIETARY INFORMATION

Changes: Chart reformatting, PROC NAME, RNAV (RNP) to RNP AR, APP Notes.

PKAGN04-177

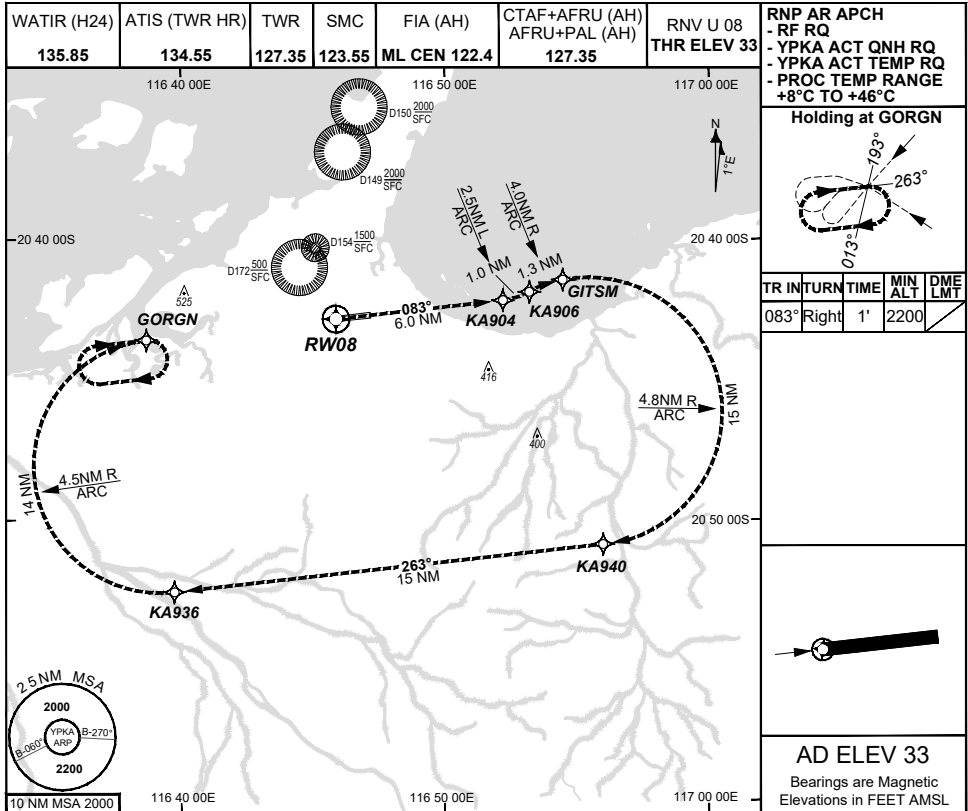
**DO NOT USE FOR NAVIGATION**



**FOR CASA APPROVED  
OPERATORS ONLY**

**30 NOV 2023**

**USE QNH**



**ENGINE OUT MISSED APPROACH:**

Track via the RNP AR Engine Out Missed Approach track to GORGN and hold as published. Acceleration altitude 1100FT QNH (1000FT AGL). Maximum holding speed 230 KIAS. EO hold only.

**DO NOT USE FOR NAVIGATION**

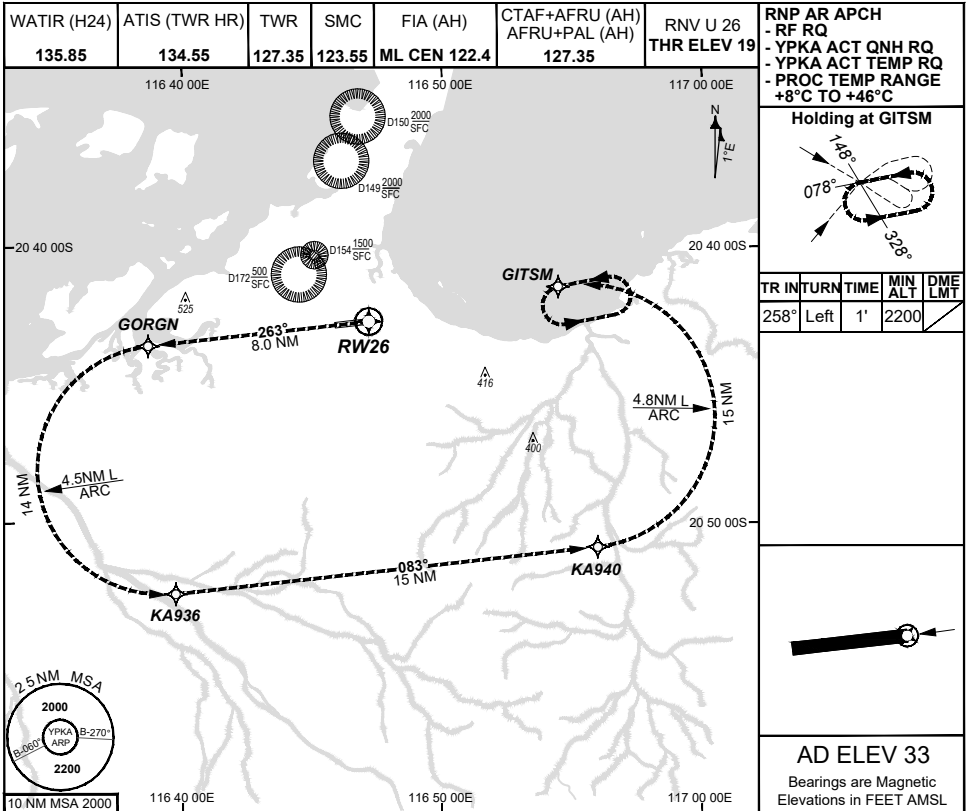
Prepared by GE Aviation



**FOR CASA APPROVED  
OPERATORS ONLY**

**30 NOV 2023**

**USE QNH**



**ENGINE OUT MISSED APPROACH:**

Track via the RNP AR Engine Out Missed Approach track to GITSM and hold as published. Acceleration altitude 1100FT QNH (1000FT AGL). Maximum holding speed 230 KIAS. EO hold only.

**DO NOT USE FOR NAVIGATION**

Prepared by GE Aviation

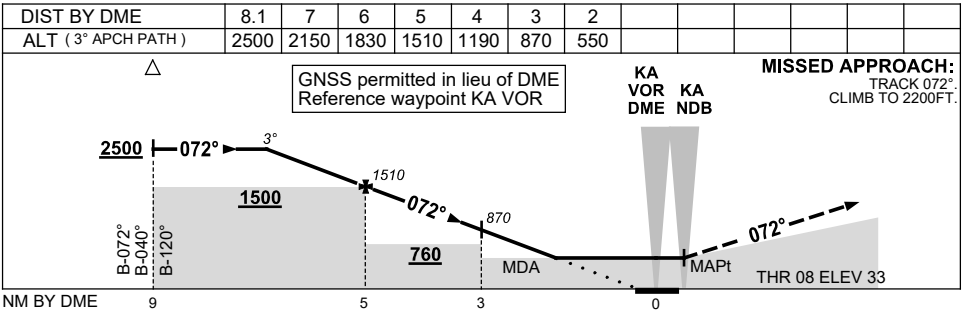
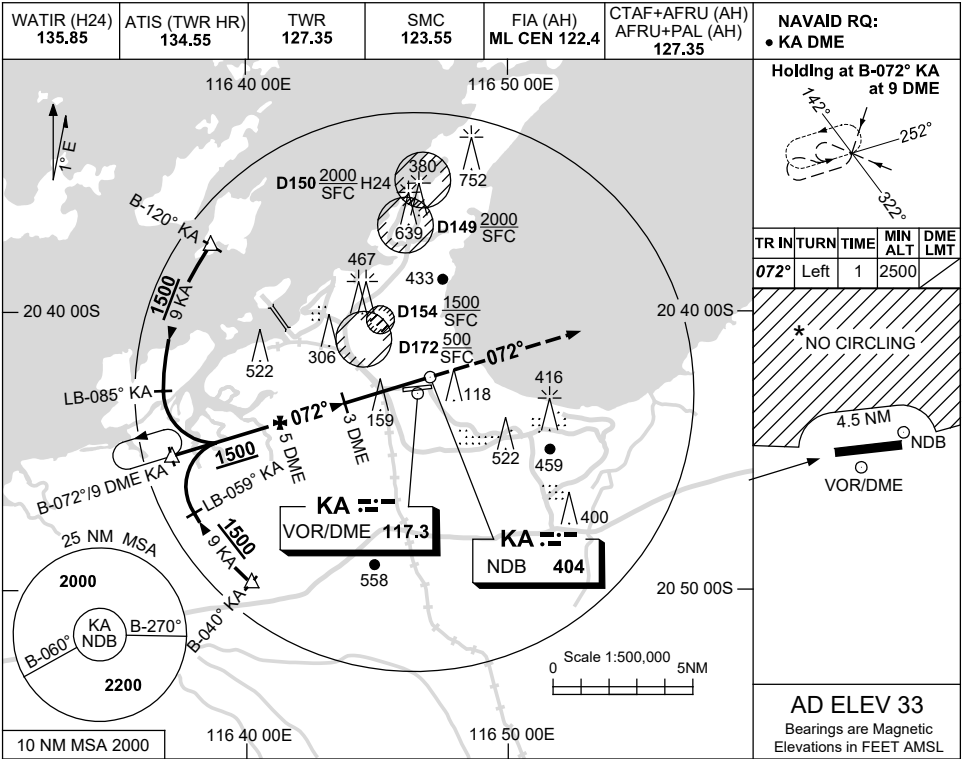


USE QNH

NDB-Z RWY 08

5 NOV 2020

KARRATHA, WA (YPKA)



CATEGORY	A	B	C	D
S-I NDB/DME	550 (517-2.9)			NOT APPLICABLE
CIRCLING *	860 (827-2.4)		1090 (1057-4.0)	
ALTERNATE	(1327-4.4)		(1557-6.0)	

- NOTES**
- MAX IAS: INITIAL : 210KT.
  - D154 MAYBE IN USE WITHOUT NOTAM PROMULGATION.
  - \*3. NO CIRCLING N OF RWY 08/26 BEYOND 4.5NM.

Changes: THR AND AD ELEV, GRID COORD FORMAT.

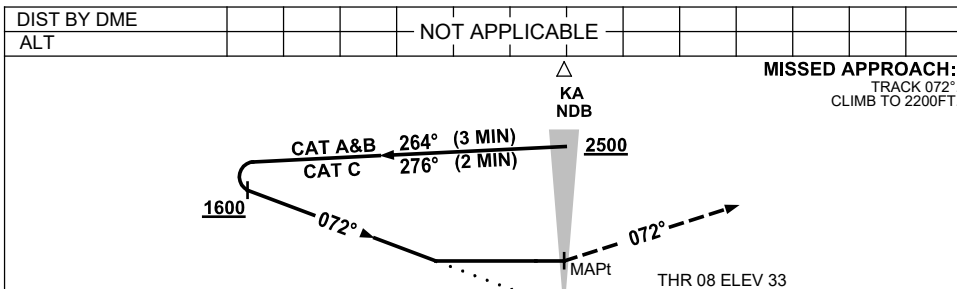
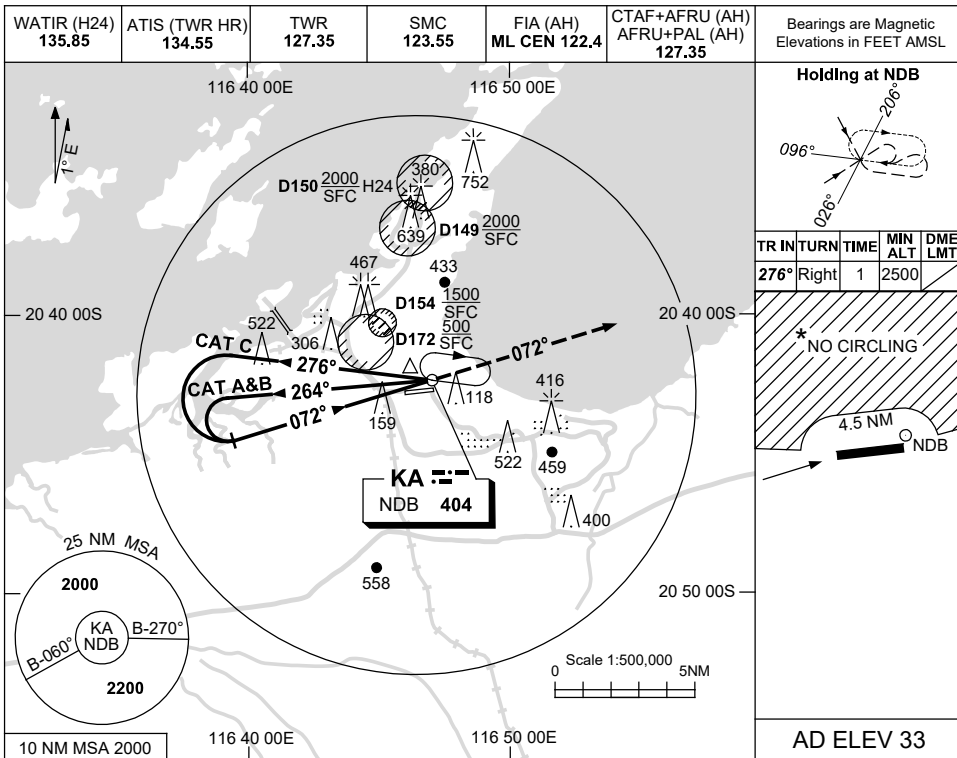
PKANB01-165

USE QNH

NDB-Y RWY 08

**KARRATHA, WA (YPKA)**

5 NOV 2020



**NOTES**

CATEGORY	A	B	C	D
S-I NDB	640 (607-3.4)			NOT APPLICABLE
CIRCLING *	860 (827-2.4)	1090 (1057-4.0)		
ALTERNATE	(1327-4.4)		(1557-6.0)	

1. MAX IAS:  
INITIAL : 210KT.
2. D154 MAYBE IN USE WITHOUT NOTAM PROMULGATION.
- \*3. NO CIRCLING N OF RWY 08/26 BEYOND 4.5NM.

Changes: THR AND AD ELEV, GRID COORD FORMAT.

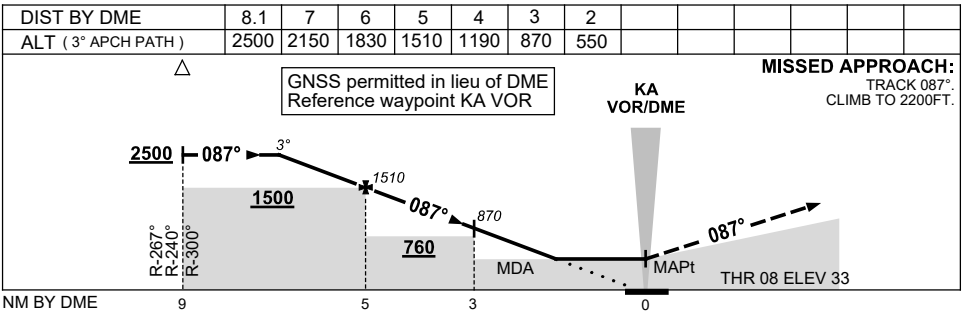
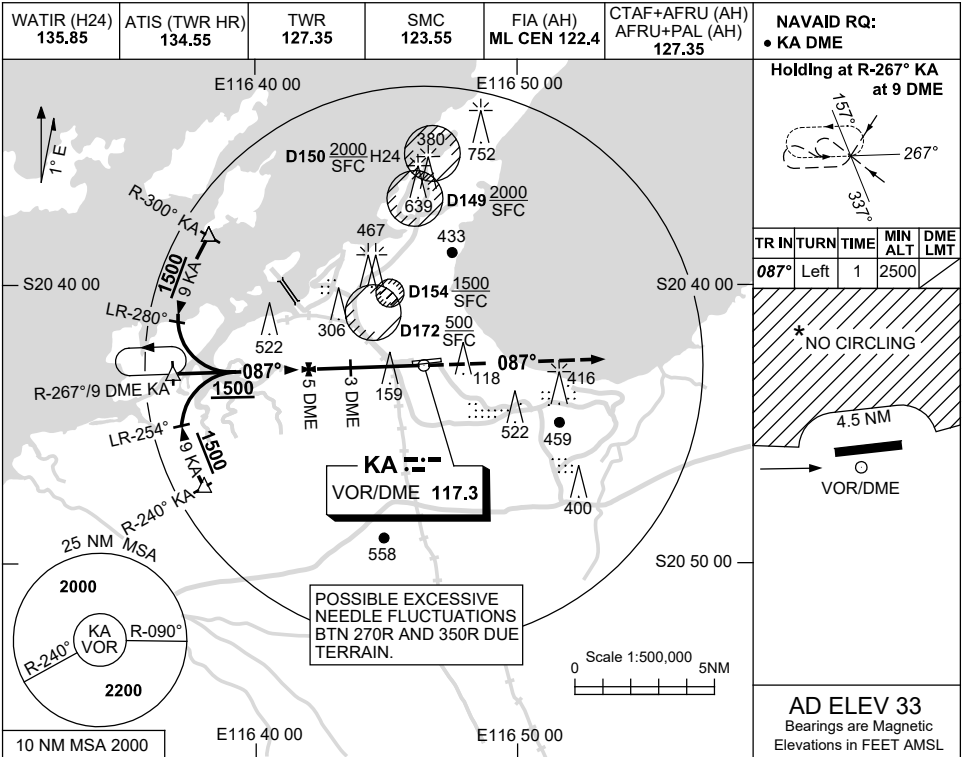
PKAN02-165

USE QNH

VOR-Z RWY 08

5 NOV 2020

KARRATHA, WA (YPKA)



CATEGORY	A	B	C	D
S-I VOR/DME	<b>550 (517-2.9)</b>			
CIRCLING *	<b>860 (827-2.4)</b>		<b>1090 (1057-4.0)</b>	<b>1090 (1057-5.0)</b>
ALTERNATE	(1327-4.4)		(1557-6.0)	(1557-7.0)

**NOTES**

- MAX IAS: INITIAL : 210KT.
- D154 MAYBE IN USE WITHOUT NOTAM PROMULGATION.
- \*3. NO CIRCLING N OF RWY 08/26 BEYOND 4.5NM.

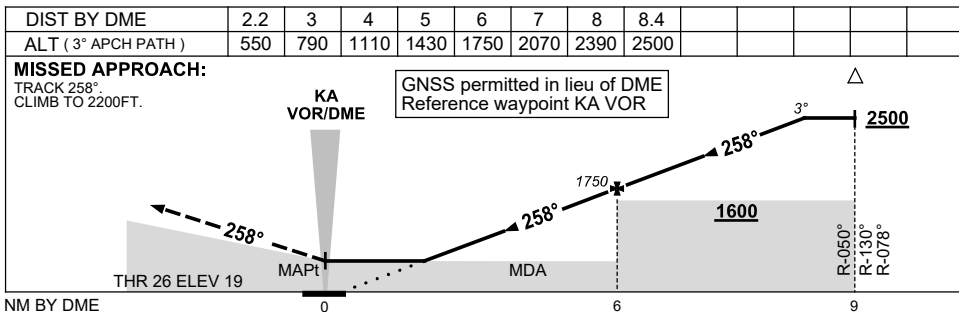
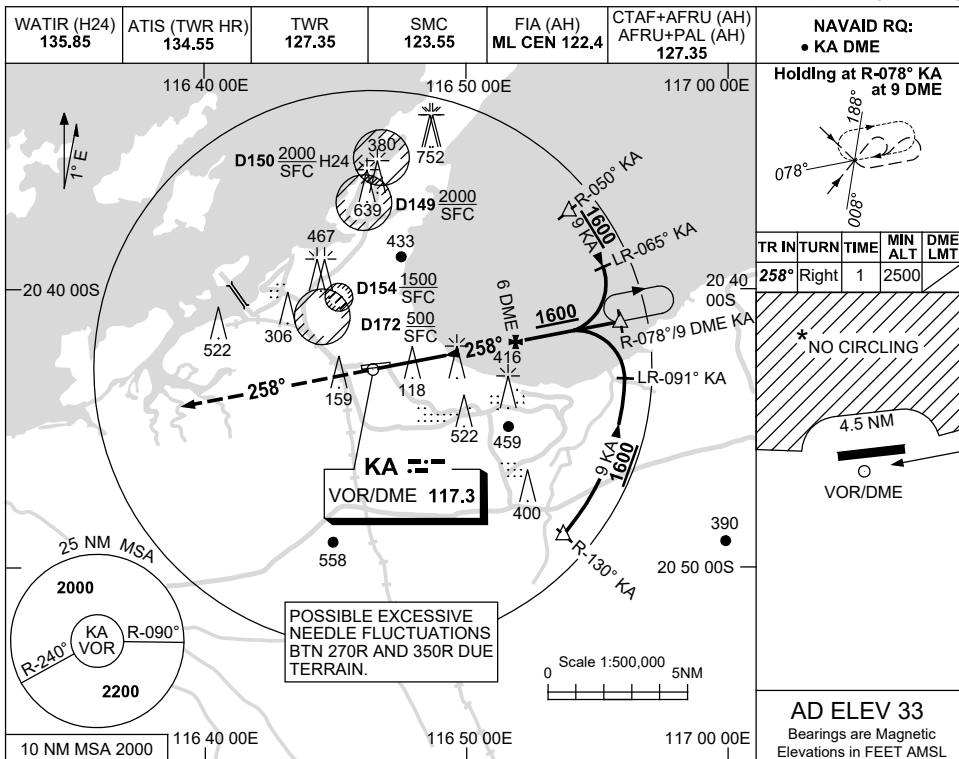
Changes: THR AND AD ELEV, GRID COORD FORMAT. PKAV001-165

USE QNH

VOR-Z RWY 26

5 NOV 2020

KARRATHA, WA (YPKA)



CATEGORY	A	B	C	D
S-I VOR/DME	<b>550 (531-3.0)</b>			
CIRCLING *	<b>860 (827-2.4)</b>		<b>1090 (1057-4.0)</b>	
ALTERNATE	(1327-4.4)		(1557-7.0)	

- NOTES**
- MAX IAS:  
INITIAL : 210KT.
  - D154 MAYBE IN USE WITHOUT NOTAM PROMULGATION.
  - \*3. NO CIRCLING N OF RWY 08/26 BEYOND 4.5NM.

Changes: THR AND AD ELEV, GRID COORD FORMAT.

PKAV002-165

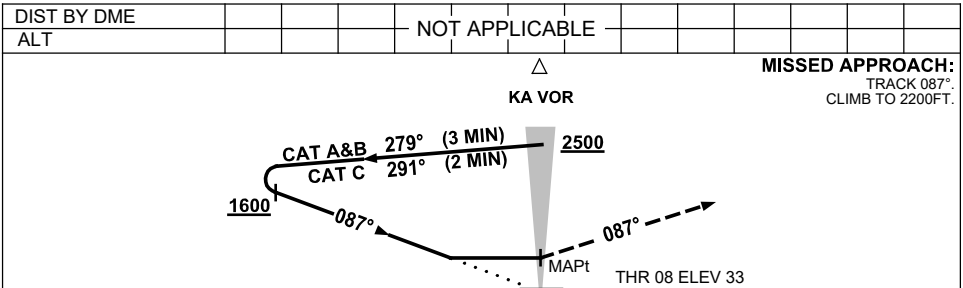
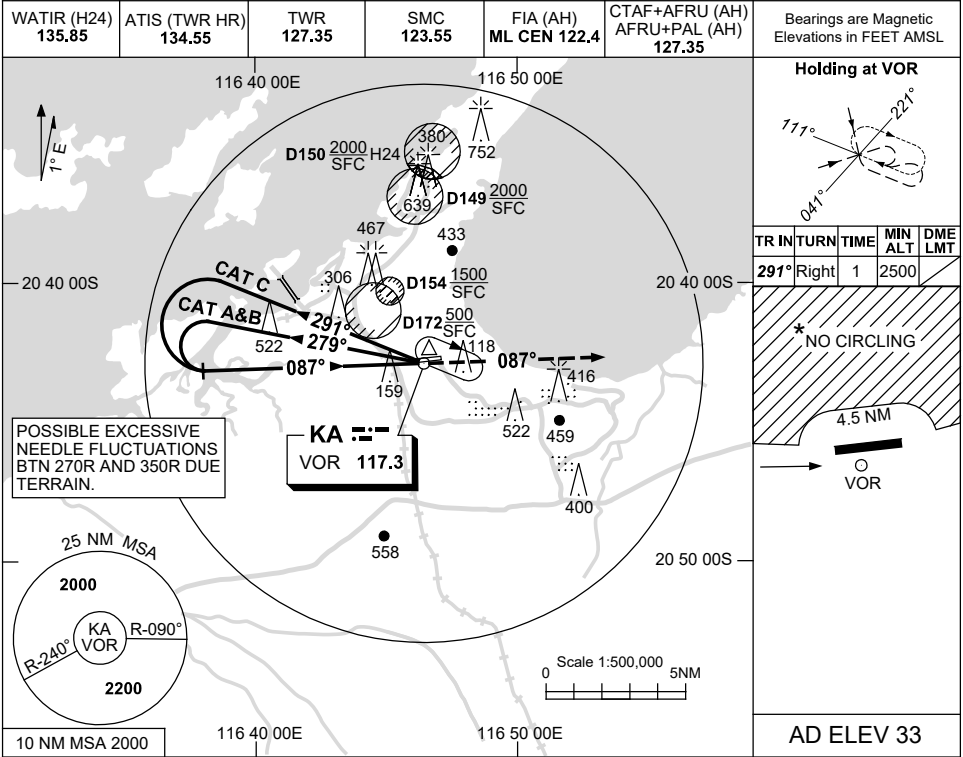


USE QNH

VOR-Y RWY 08

5 NOV 2020

**KARRATHA, WA (YPKA)**



CATEGORY	A	B	C	D
S-I VOR	<b>790 (757-4.3)</b>			<b>NOT APPLICABLE</b>
CIRCLING*	<b>860 (827-2.4)</b>		<b>1090 (1057-4.0)</b>	
ALTERNATE	<b>(1327-4.4)</b>		<b>(1557-6.0)</b>	

1. MAX IAS: INITIAL : 210KT.  
 2. D154 MAYBE IN USE WITHOUT NOTAM PROMULGATION.  
 \*3. NO CIRCLING N OF RWY 08/26 BEYOND 4.5NM.

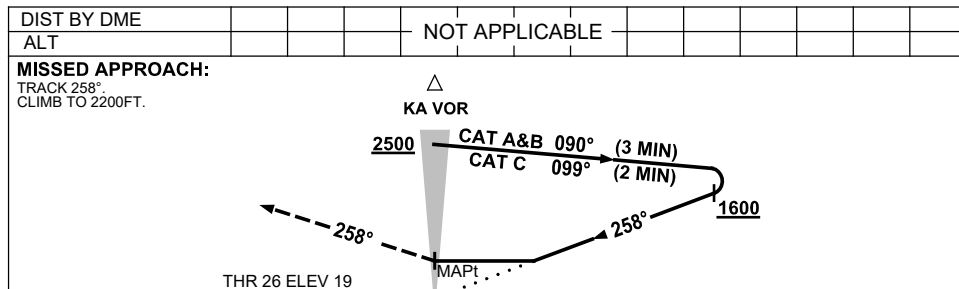
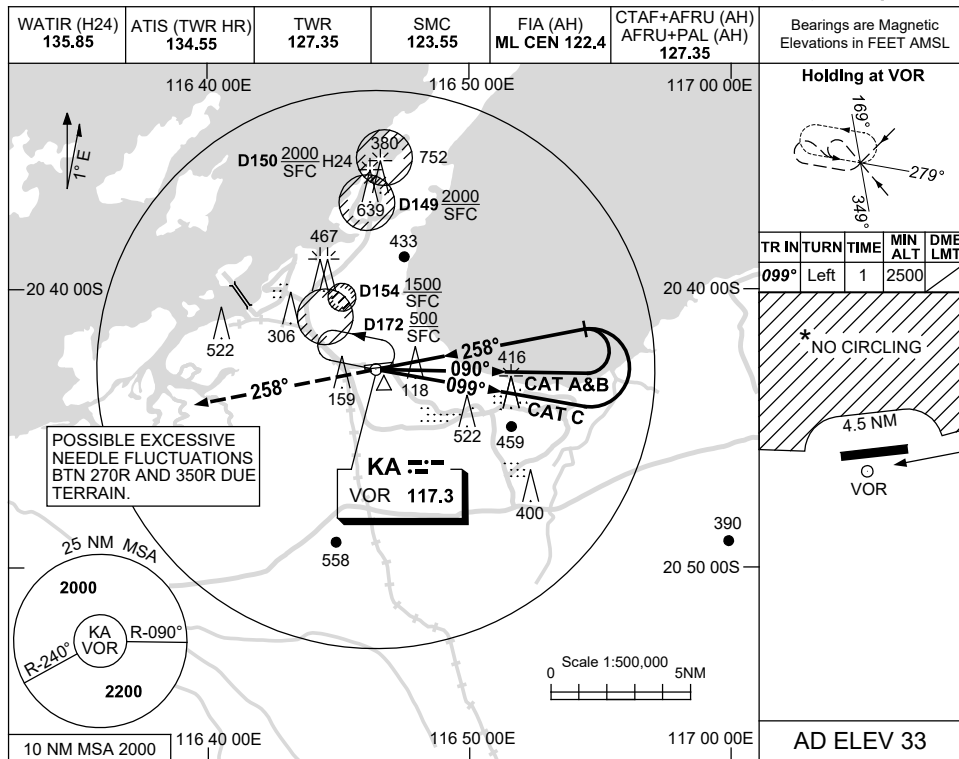
Changes: THR AND AD ELEV, GRID COORD FORMAT.

PKAVO03-165

USE QNH

VOR-Y RWY 26  
KARRATHA, WA (YPKA)

5 NOV 2020



NOTES

CATEGORY	A	B	C	D
S-I VOR	800 (787-4.4)			NOT APPLICABLE
CIRCLING *	860 (827-2.4)	1090 (1057-4.0)		
ALTERNATE	(1327-4.4)		(1557-6.0)	

\* 3. NO CIRCLING N OF RWY 08/26 BEYOND 4.5NM.

Changes: THR AND AD ELEV, GRID COORD FORMAT.

PKAV004-165