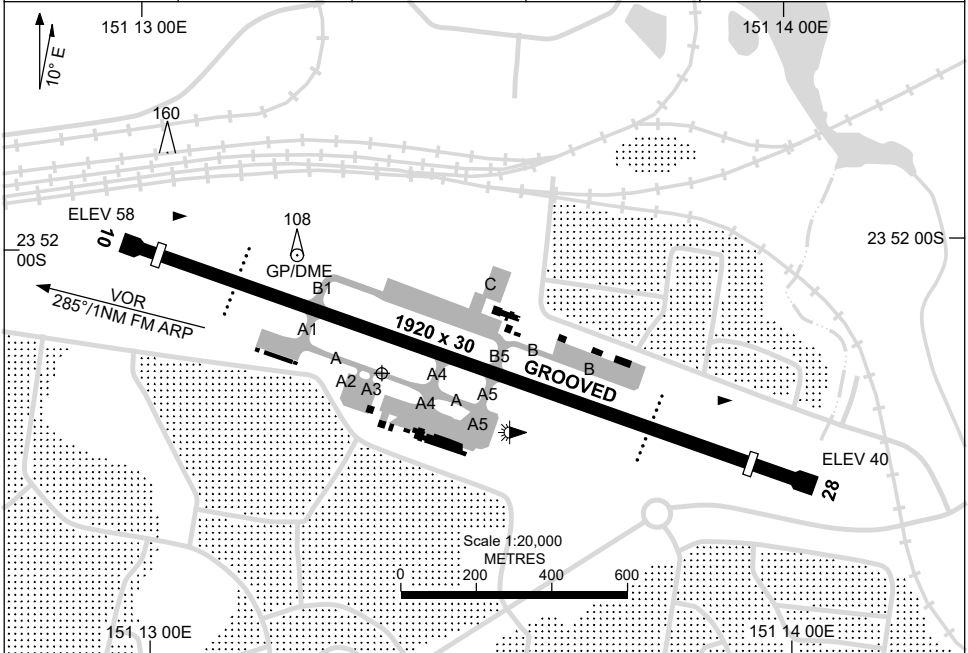


15 JUN 2023

AD ELEV 59
23 52 11S 151 13 22E

AERODROME CHART
GLADSTONE, QLD (YGLA)

AWIS 126.85	FIA BN CEN 119.55	CTAF+AFRU 118.8	AFRU+PAL 118.8	Bearings are Magnetic Elevations in FEET AMSL
----------------	----------------------	--------------------	-------------------	--



RWY	AERODROME LIGHTING	
	TAXIWAY : BLUE EDGE	RL : AFRU+PAL 118.8 , SDBY (15 SEC)
10 ¹⁰¹	PAPI 3.0° 53FT LIRL RTIL	
²⁸¹ 28	PAPI 3.0° 52FT LIRL	

NOTES

Changes: NOTES.

GLAAD01-175

GNSS ARRIVAL PROCEDURES GLADSTONE, QLD (YGLA)

25 MAR 2021

AWIS 126.85	FIA BN CEN 119.55	CTAF+AFRU 118.8	AFRU+PAL 118.8	Bearings are Magnetic Elevations in FEET AMSL
-----------------------	-----------------------------	---------------------------	--------------------------	--

25 NM MSA
5000
R-284° GLA VOR R-069°
2900
4000 R-137°

REFERENCE WAYPOINT GLA VOR

GLA VOR 116.3

VOR: POSSIBLE EXCESSIVE NEEDLE
FLUCTUATIONS BELOW 10,000FT
BETWEEN R-275° AND R-300°

* NO CIRCLING

10 NM MSA 5000

*
NO CIRCLING
SOUTH RWY 10/28

AD ELEV 59

SECTOR C

MISSED APPROACH:

TURN AS APPROPRIATE,
TRACK 065°. CLIMB TO 5000FT.
MAP TURN MAX IAS 210KT.

NM TO GLA VOR	25	15	13	8	6	2	0	0	0	0	0	0	0	0	0	0	0
CIRCLING MINIMA	A,B: 1230-2.4			C: 1230-4.0			D: N/A										
NM TO GLA VOR	9.6	9	8	7	6	5	4	3	2	1	0.9						
ALT (3° APCH PATH)	4000	3800	3480	3160	2850	2530	2210	1890	1570	1250	1230						

SECTOR D

MISSED APPROACH:

TURN LEFT,
TRACK 065°. CLIMB TO 5000FT.

NM TO GLA VOR	25	18	15	10	6	5	3	0	0	0	0	0	0	0	0	0	0
CIRCLING MINIMA	A,B: 1230-2.4			C: 1230-4.0			D: N/A										
NM TO GLA VOR	12.5	12	11	10	9	8	7	6	5	4	3	2	1	0.6			
ALT (3° APCH PATH)	5000	4850	4530	4210	3900	3580	3260	2940	2620	2300	1990	1670	1350	1230			

Changes: MINIMA, SECTOR C STEP ALT, SECTOR D 10NM FIX.

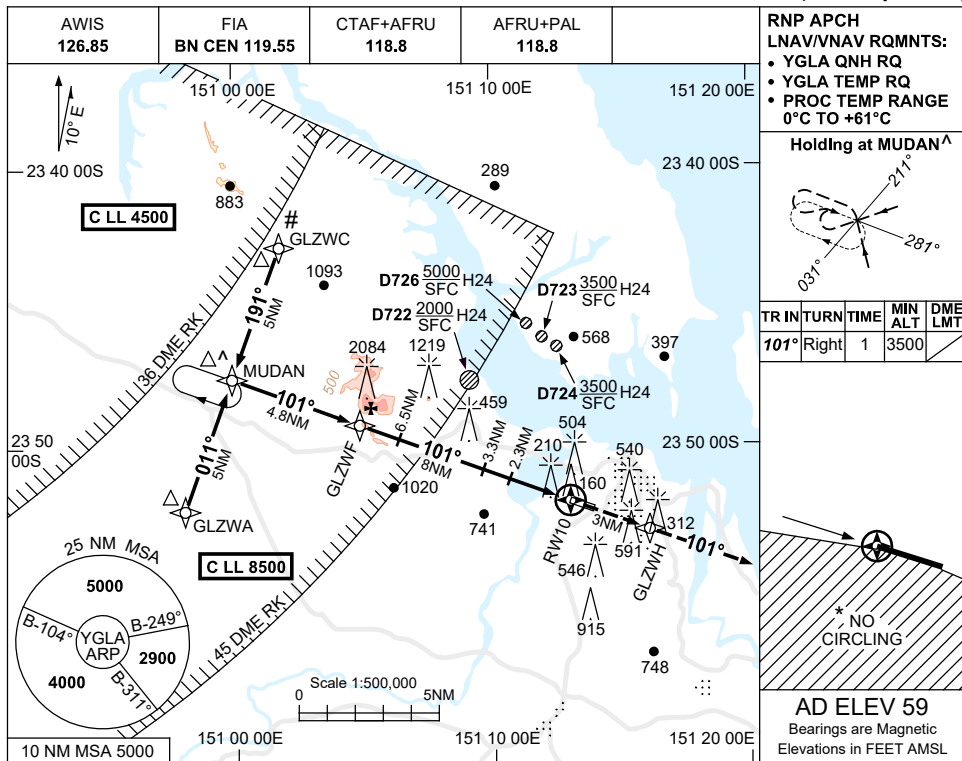
GLADG01-166

USE QNH

RNP RWY 10

21 MAR 2024

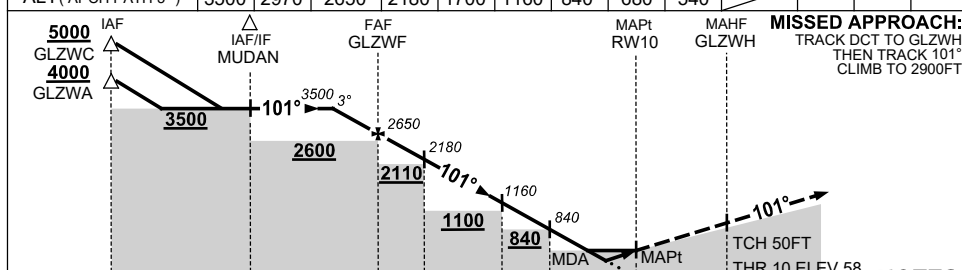
GLADSTONE, QLD (YGLA)



TR	IN	TURN	TIME	MIN ALT	DME LMT
101°	Right	1	3500		

AD ELEV 59
Bearings are Magnetic
Elevations in FEET AMSL

NM TO NEXT WPT	2.7	1	GLZWF	6.5	5	3.3	2.3	1.8	1.4	RW10
ALT (APCH PATH 3°)	3500	2970	2650	2180	1700	1160	840	680	540	



- NOTES**
- MAX IAS: INITIAL : 210KT. HOLDING: 220KT.
 - NO CIRCLING STH OF RWY10/28.
 - COLOR: SEE SPEC NOTICES.
 - CAUTION: GLZWC IN CLOSE PROXIMITY TO YBRK CTA.
 - CAUTION: YBRK CTA C LL 4500 OVERLAYS HOLDING PATTERN.

CATEGORY	A	B	C	D
LNAV/VNAV	540 (482-2.7)			NOT APPLICABLE
LNAV	680 (621-3.5)			
CIRCLING*	990 (931-2.4)		1170 (1111-4.0)	
ALTERNATE	(1431-4.4)		(1611-6.0)	

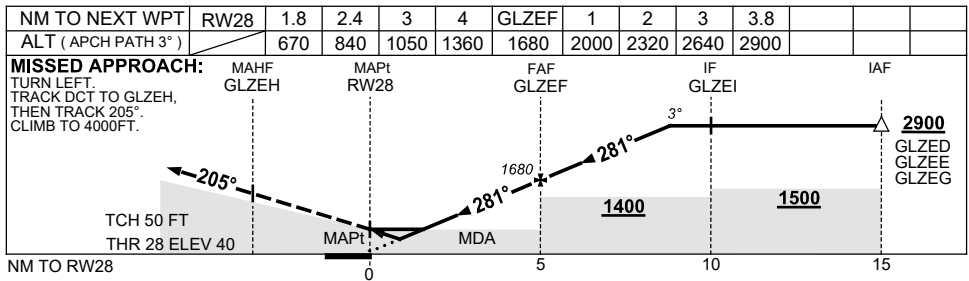
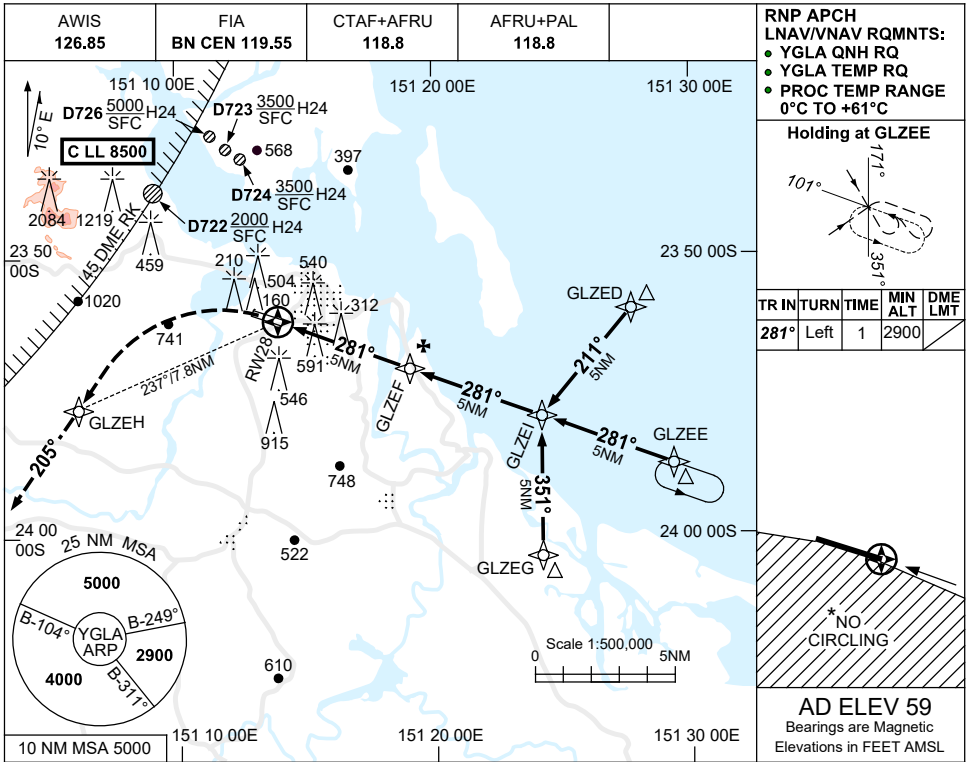
Changes: LNAV/VNAV MINIMA, MINIMUM SEGMENT ALTITUDE.

GLAGN01-178

24 MAR 2022

USE QNH

RNP RWY 28
GLADSTONE, QLD (YGLA)



NOTES

1. MAX IAS:
INITIAL : 210KT.
- *2. NO CIRCLING STH OF RWY 10/28.
3. COLOUR: SEE SPEC NOTICES.
4. PROC OVERLIES FACING ISLAND (YFLD) RNP 125. ACFT SEPARATION NOT ASSURED.

CATEGORY	A	B	C	D	
LNAV/VNAV	670 (630-3.6)			NOT APPLICABLE	
LNAV	840 (800-4.6)				
CIRCLING *	990 (931-2.4)		1170 (1111-4.0)		
ALTERNATE	(1431-4.4)		(1611-6.0)		

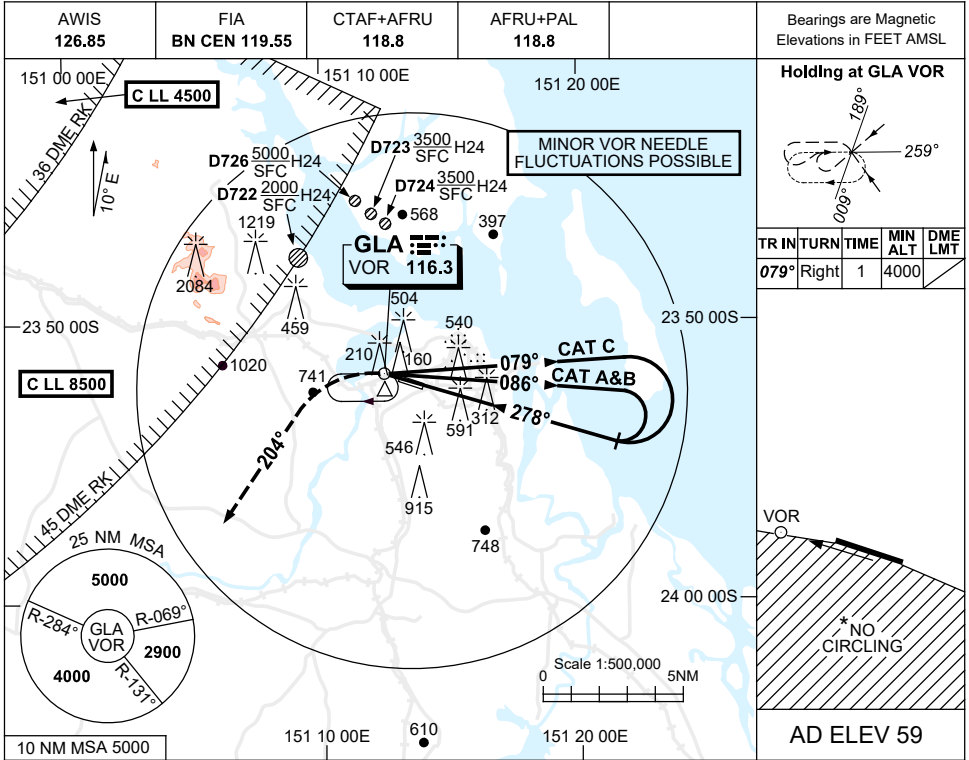
Changes: CHART TITLE, PBN SPECIFICATION BOX, NOTE 4.

GLAGN02-170

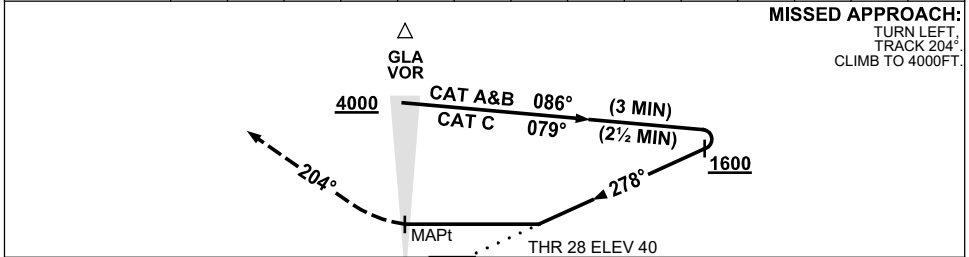
16 JUN 2022

USE QNH

VOR RWY 28
GLADSTONE, QLD (YGLA)



DME DIST	NOT APPLICABLE									
ALT										



NOTES

1. MAX IAS:
INITIAL:
CAT C 210KT.
- * 2. NO CIRCLING STH OF RWY 10/28.
3. COLOUR: SEE SPEC NOTICES.
4. PROC OVERLIES FACING ISLAND (YFLD) RNP 125. ACFT SEPARATION NOT ASSURED.

CATEGORY	A	B	C	D
S-I VOR	990 (950-5.0)			NOT APPLICABLE
CIRCLING *	990 (931-2.4)	1170 (1111-4.0)		
ALTERNATE	(1431-4.4)		(1611-6.0)	

Changes: NOTE 4.

GLAV001-171