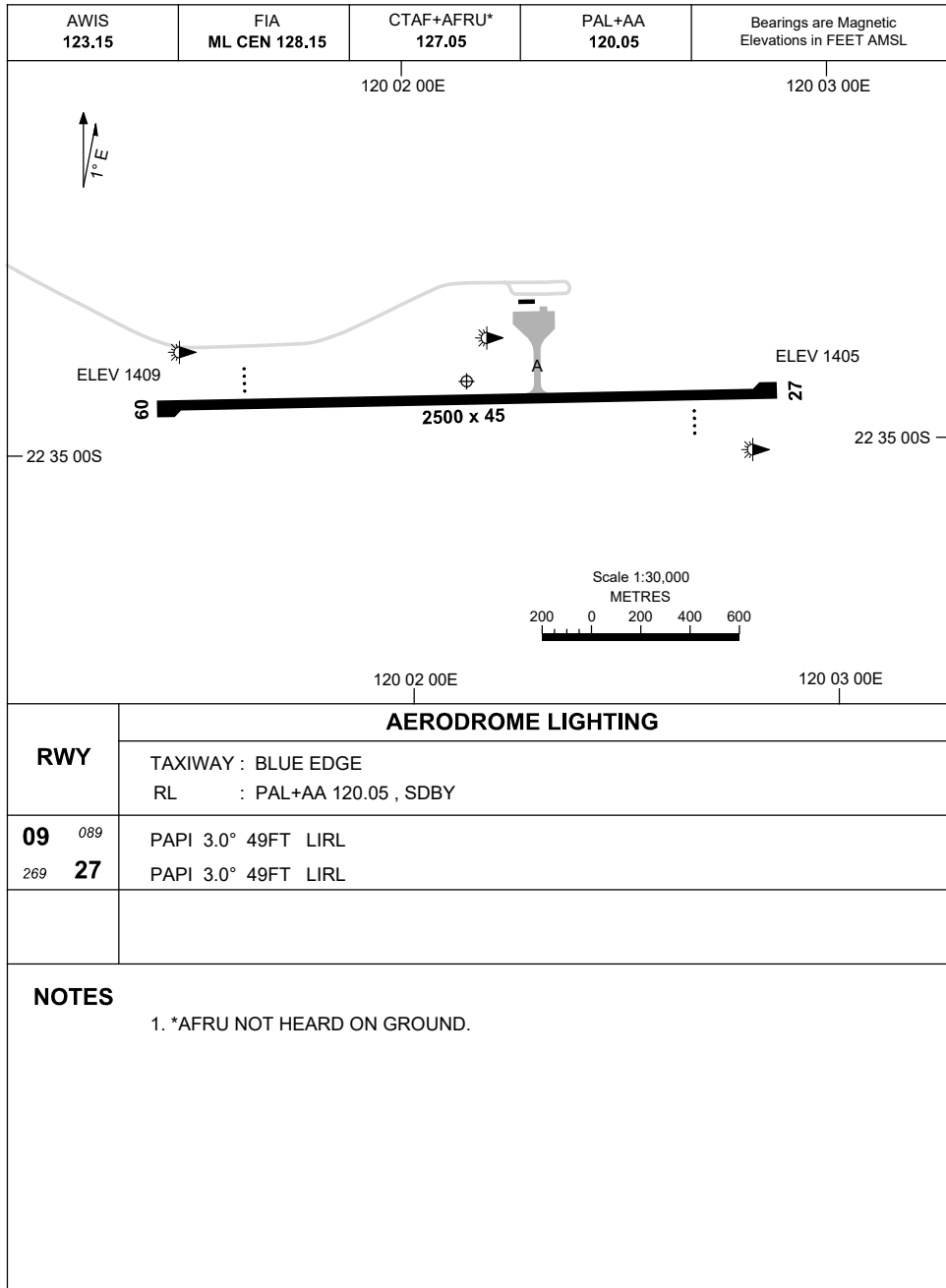


23 MAR 2023

AD ELEV 1409
22 34 52S 120 02 08E

AERODROME CHART
GINBATA, WA (YGIA)



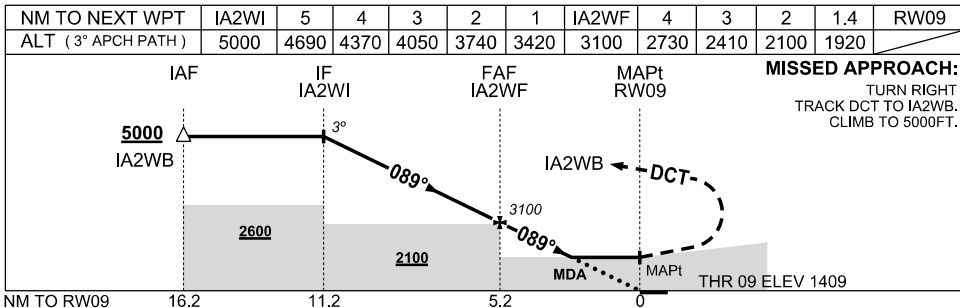
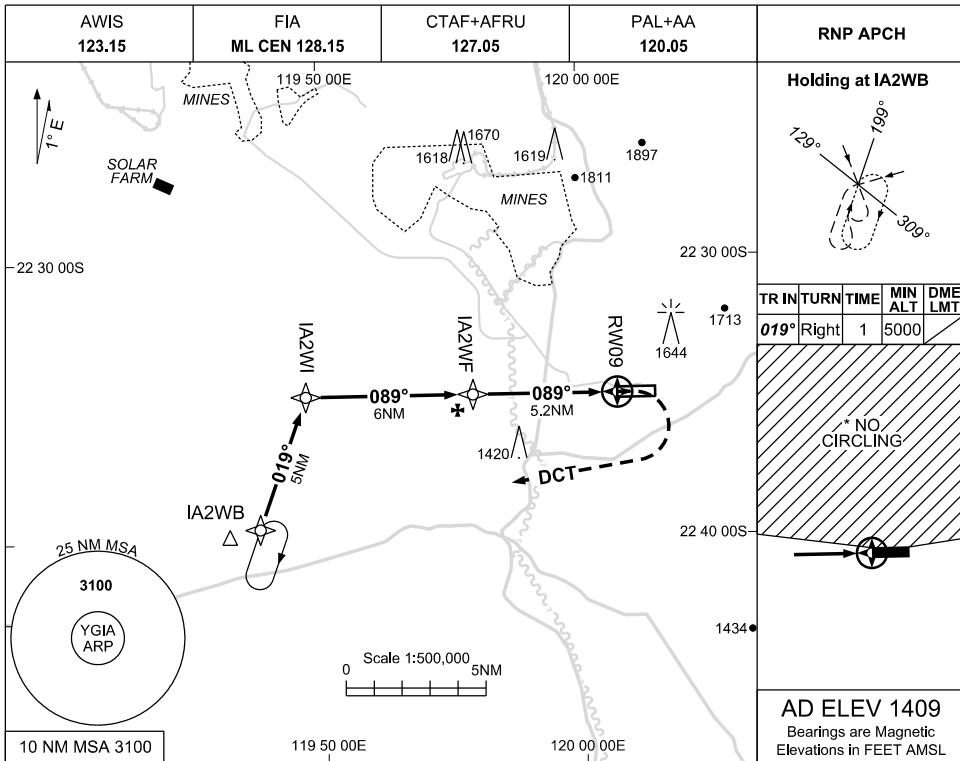
Changes: NOTES 1 AND 3.

GIAAD01-174

30 NOV 2023

USE QNH

RNP RWY 09
GINBATA, WA (YGIA)



NOTES

1. MAX IAS: INITIAL: 210KT
MAP TURN: 210KT
HOLDING: 185KT
- *2. NO CIRCLING NORTH OF RWY 09/27.
3. **CAUTION:** UA OPS VTI 13NM RAD OF YGIA ARP

| CATEGORY | A | B | C | D |
|------------|-----------------------|---|----------------------|----------------------|
| LNAV | 1920 (511-2.9) | | | |
| * CIRCLING | 2010 (601-2.4) | | 2240(831-4.0) | 2340(931-5.0) |
| ALTERNATE | (1101-4.4) | | (1331-6.0) | (1431-7.0) |

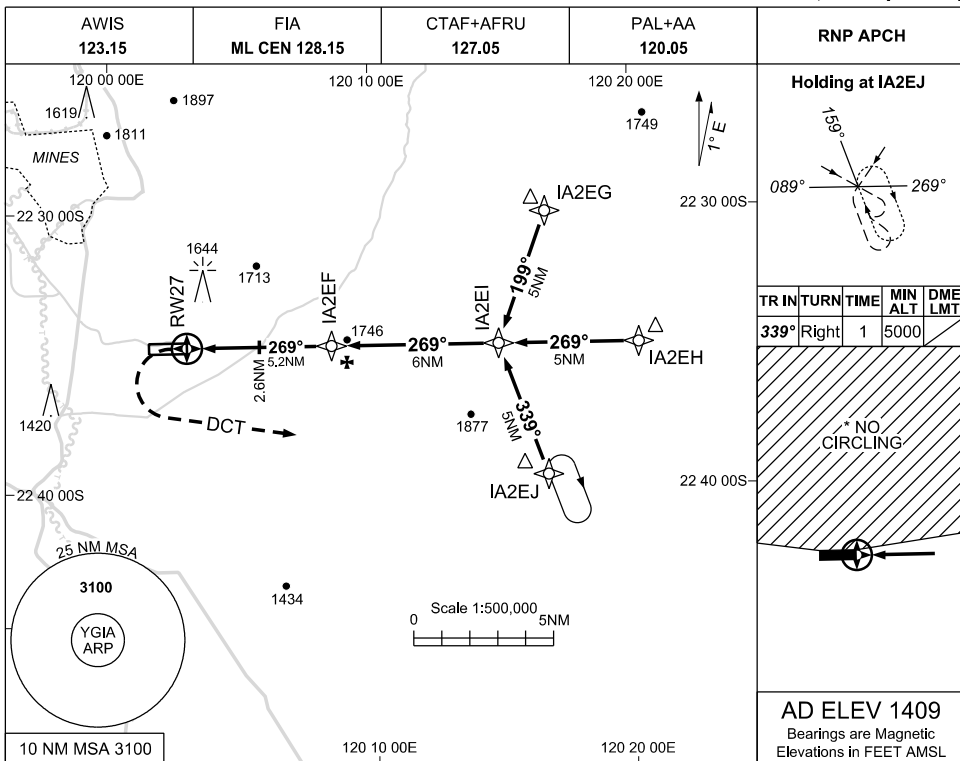
Changes: CHART TITLE, EDITORIAL

GIAGN01-177

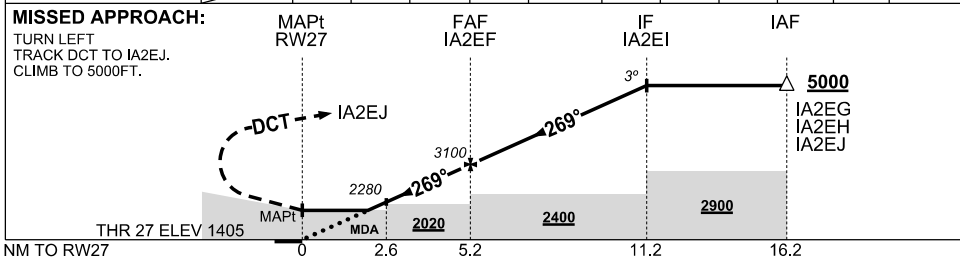
USE QNH

RNP RWY 27
GINBATA, WA (YGIA)

30 NOV 2023



| | | | | | | | | | | | | |
|--------------------|------|------|------|------|------|-------|------|------|------|------|------|-------|
| NM TO NEXT WPT | RW27 | 1.5 | 2 | 3 | 4 | IA2EF | 1 | 2 | 3 | 4 | 5 | IA2EI |
| ALT (3° APCH PATH) | | 1930 | 2090 | 2410 | 2730 | 3100 | 3420 | 3740 | 4060 | 4380 | 4690 | 5000 |



NOTES

- MAX IAS:
INITIAL: 210KT
MAP TURN: 210KT
HOLDING: 210KT
- NO CIRCLING
NORTH OF
RWY 09/27.
- CAUTION:** UA OPS
WI 13NM RAD OF
YGIA ARP

| CATEGORY | A | B | C | D |
|------------|----------------|---------------|---|---------------|
| LNAV | 1930 (521-2.9) | | | |
| * CIRCLING | 2010 (601-2.4) | 2240(831-4.0) | | 2340(931-5.0) |
| ALTERNATE | (1101-4.4) | (1331-6.0) | | (1431-7.0) |

Changes: CHART TITLE, EDITORIAL

GIAGN02-177