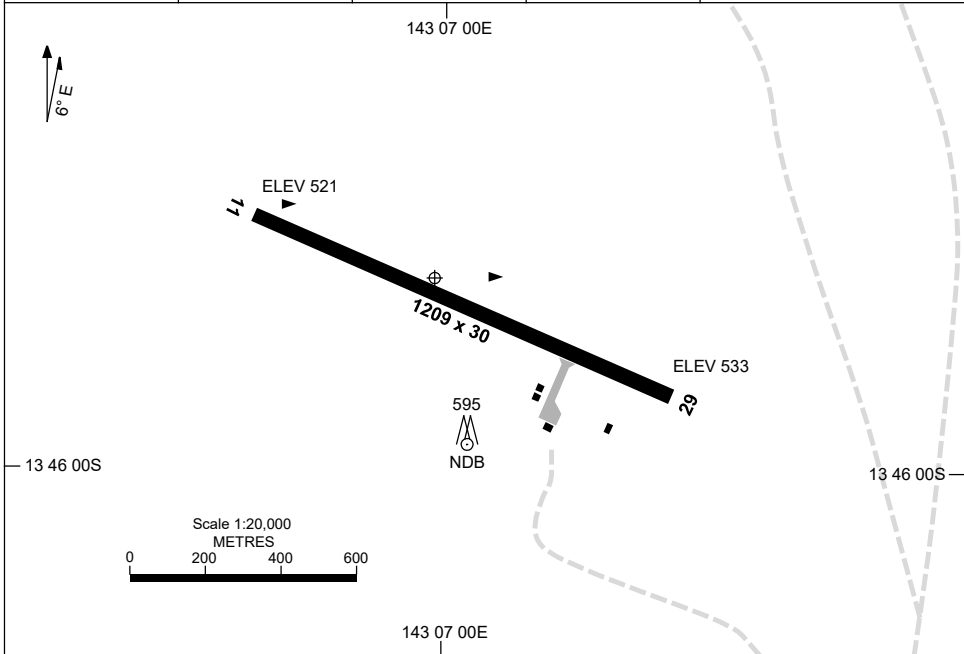


23 MAR 2023

AD ELEV 533
13 45 43S 143 07 00E

AERODROME CHART
COEN, QLD (YCOE)

FIA BN CEN 118.2	CTAF+AFRU 126.7			Bearings are Magnetic Elevations in FEET AMSL
----------------------------	---------------------------	--	--	--



RWY	AERODROME LIGHTING
	TAXIWAY : BLUE EDGE (SOLAR) RL : FIXED SOLAR LGT , EMERG ONLY
11 ¹⁰⁸ 288 29	SOLAR SOLAR

NOTES

1. FIA BN CEN 118.2 AVBL IN CIRCUIT AREA.

Changes: Editorial.

COEAD01-174

**GNSS ARRIVAL PROCEDURES
COEN, QLD (YCOE)**

25 MAR 2021

FIA BN CEN 118.2	CTAF+AFRU 126.7				Bearings are Magnetic Elevations in FEET AMSL
---------------------	--------------------	--	--	--	--

REFERENCE WAYPOINT COE NDB

25 NM MSA
3300
COE NDB
3900
B-200°
B-020°
10 NM MSA 3900

COE NDB 404

AD ELEV 533

SECTOR A

3900
3000
2500
2470
2470
3°
3140
2500
MDA
MAPt
3900
NDB

MISSED APPROACH:
CLIMB ON TRACK TO 3900FT.

NM TO COE NDB	25	15	9	5	3	0													
CIRCLING MINIMA	A,B: 2400-2.4			C: 2470-4.0		D: N/A													
NM TO COE NDB	7.4	7	6	5	4	3	2.9	2.7											
ALT (3° APCH PATH)	3900	3780	3460	3140	2820	2500	2470	2400											

SECTOR B

3900
2900
2600
2500
2500
3°
2920
2600
MDA
MAPt
3300
NDB

MISSED APPROACH:
CLIMB ON TRACK TO 3300FT.

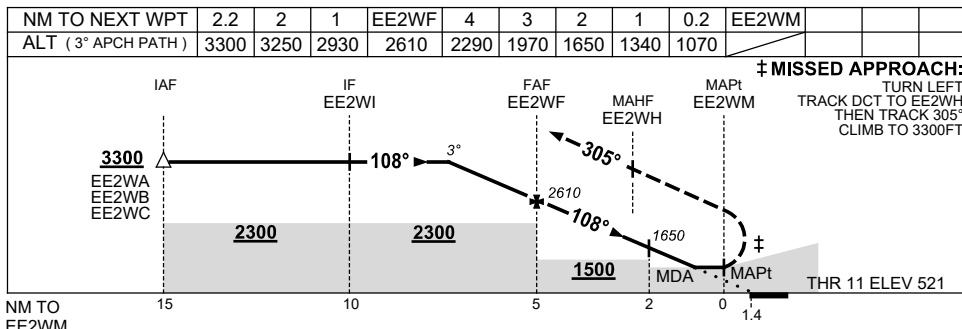
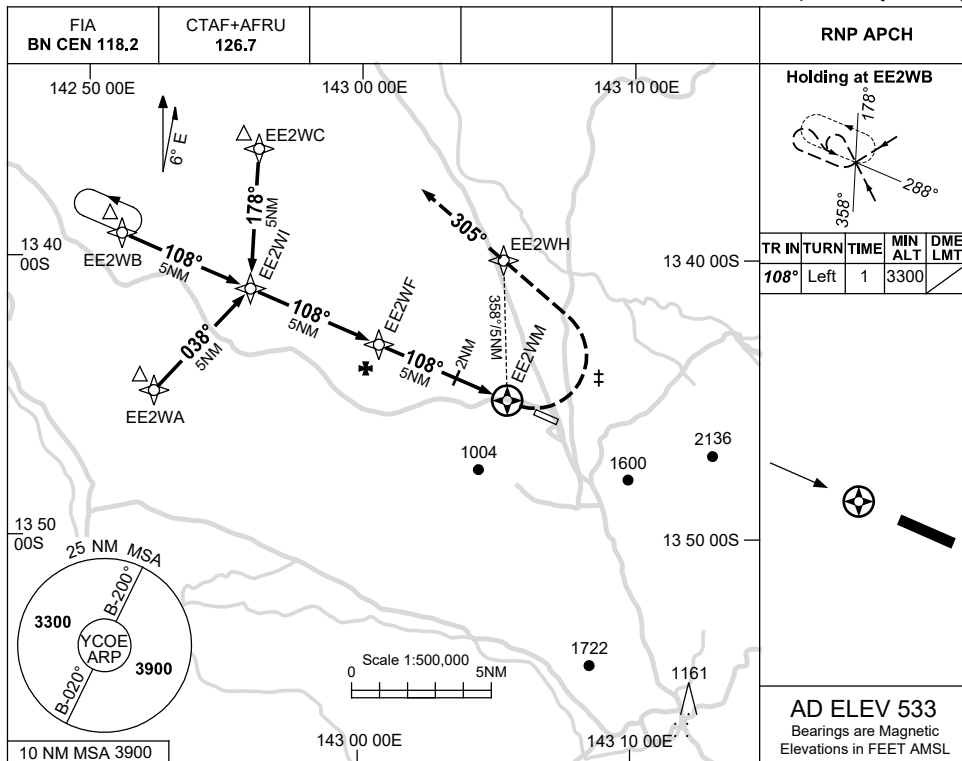
NM TO COE NDB	25	15	8	5	4	3	0												
CIRCLING MINIMA	A,B: 2500-2.4			C: 2500-4.0		D: N/A													
NM TO COE NDB	7.1	7	6	5	4	3	2.7												
ALT (3° APCH PATH)	3900	3880	3560	3240	2920	2600	2500												

Changes: Editorial.

USE QNH

RNP RWY 11
COEN, QLD (YCOE)

23 MAR 2023



NOTES

CATEGORY	A	B	C	D
LNAV	1070 (549-3.1)			NOT APPLICABLE
CIRCLING	1710 (1177-2.4)	2470 (1937-4.0)		
ALTERNATE	(1677-4.4)		(2437-6.0)	

- 1. MAX IAS: INITIAL : 210KT.
- ‡ MAP TURN: 180KT.

Changes: MSA REFERENCE ARP, WPT NAMING CONVENTION, Editorial.

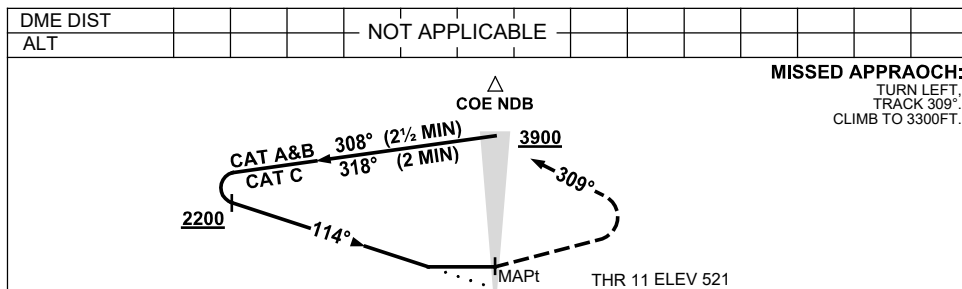
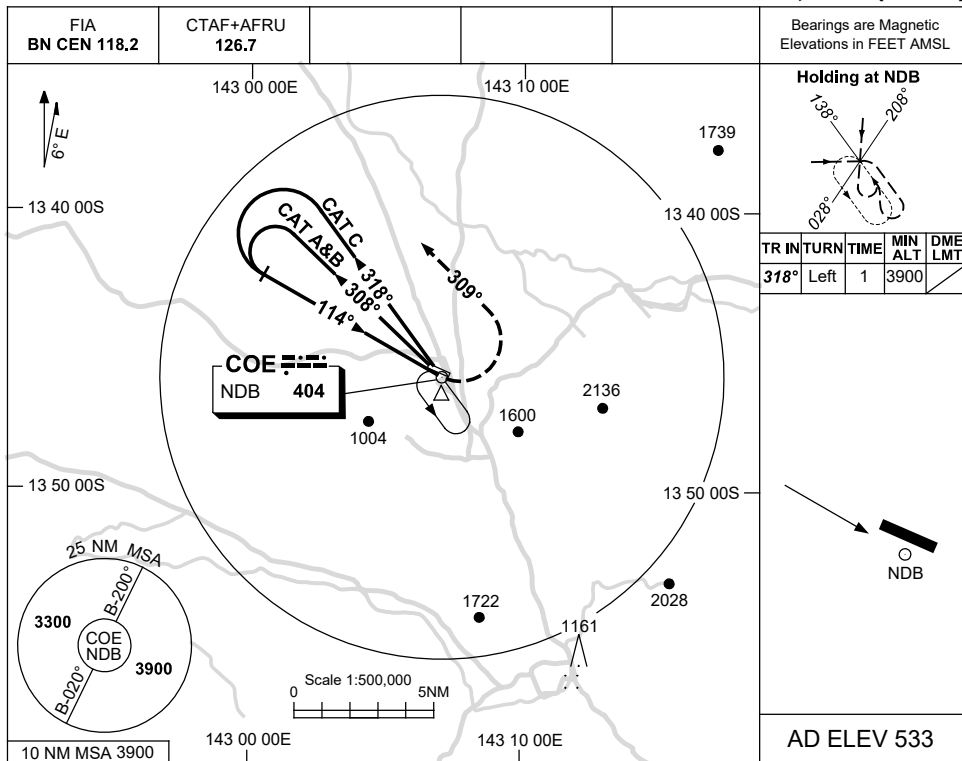
COEGN01-174



USE QNH

NDB RWY 11
COEN, QLD (YCOE)

25 MAR 2021



NOTES

CATEGORY	A	B	C	D
S-I NDB	1680 (1159-5.0)			NOT APPLICABLE
CIRCLING	1710 (1177-2.4)	2470 (1937-4.0)		
ALTERNATE	(1677-4.4)	(2437-6.0)		

- MAX IAS:
INITIAL : 210KT.
MAP TURN: 180KT.

Changes: COORD FMT.

COENB01-166