

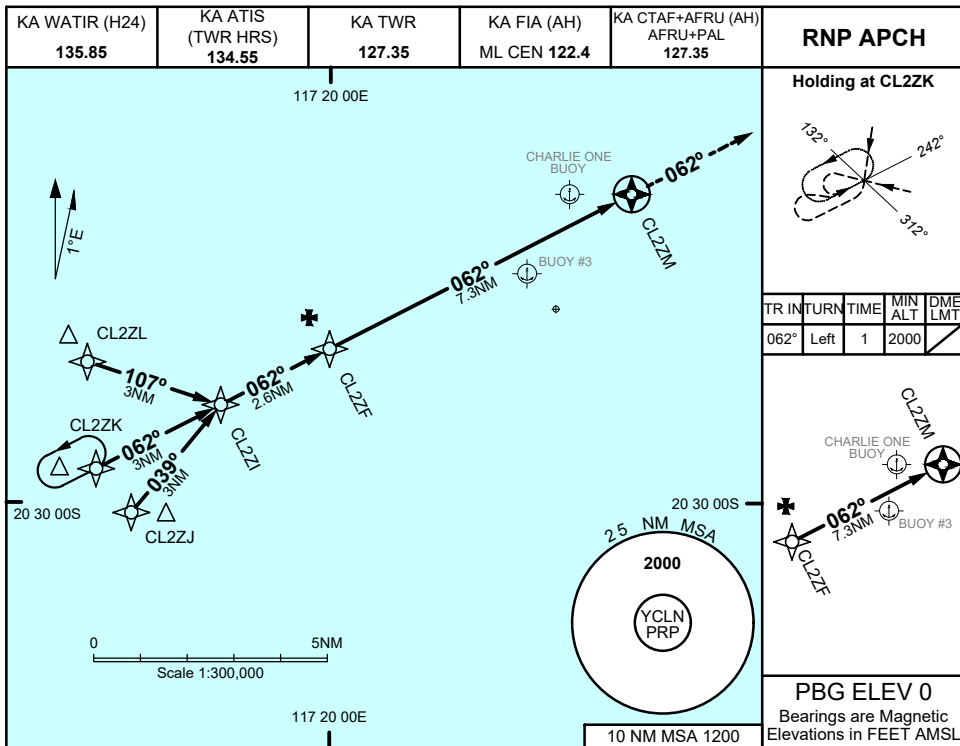
# FOR CASA APPROVED OPERATORS ONLY

USE QNH

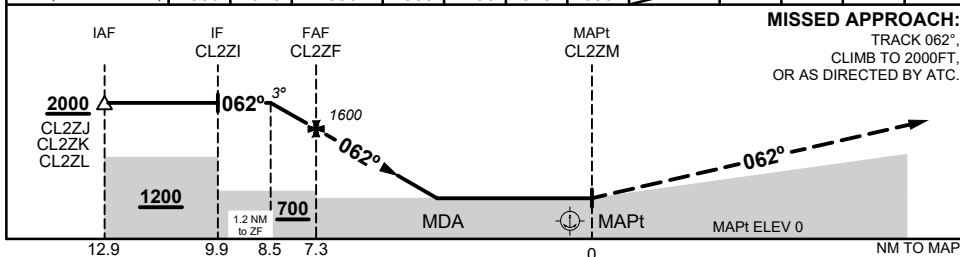
RNP Z 062

21 MAR 2024

**CHARLIE ONE, WA (YCLN)**



NM TO NEXT WPT	1.2	1	CL2ZF	7	6	5	4.1	CL2ZM			
ALT (3° APCH PATH)	2000	1920	1600	1500	1190	870	600				



## NOTES

1. MAX IAS:  
INITIAL : 90KTS  
HOLDING : 90 KTS
2. MAPt LOCATED 1.0 NM FROM CHARLIE ONE
3. PRP (S20 25 50, E117 25 09)

<b>CATEGORY</b>	<b>H</b>
<b>AREA QNH</b>	<b>600 (600 - 2.5)</b>
<b>ALTERNATE</b>	<b>(1140 - 4.5)</b>

Changes: MINIMA, NOTES, Editorial

CLNGN01-178

# FOR CASA APPROVED OPERATORS ONLY



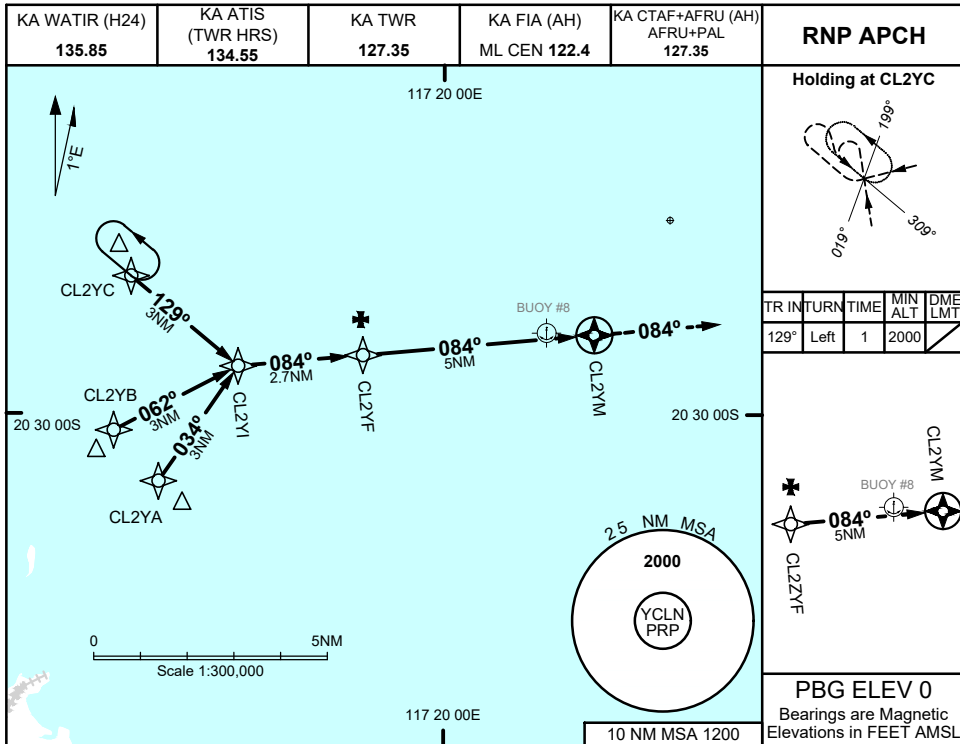
# FOR CASA APPROVED OPERATORS ONLY

USE QNH

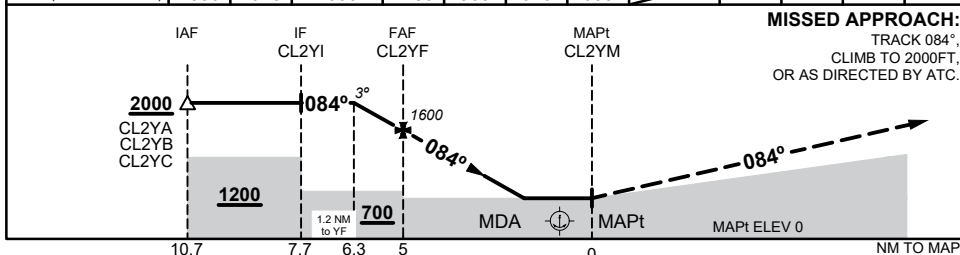
RNP Y 084

21 MAR 2024

**CHARLIE ONE, WA (YCLN)**



NM TO NEXT WPT	1.2	1	CL2YF	4	3	2	1.8	CL2YM			
ALT (3° APCH PATH)	2000	1920	1600	1280	960	640	600				



**NOTES**

1. MAX IAS:  
INITIAL : 90KTS  
HOLDING : 90 KTS
2. MAPt LOCATED 1.0 NM FROM BUOY #8
3. PRP (S20 25 50, E117 25 09)

<b>CATEGORY</b>	<b>H</b>
<b>AREA QNH</b>	<b>600 (600 - 2.5)</b>
<b>ALTERNATE</b>	<b>(1140 - 4.5)</b>

Changes: MINIMA, NOTES, Editorial

CLNGN02-178

# FOR CASA APPROVED OPERATORS ONLY

