

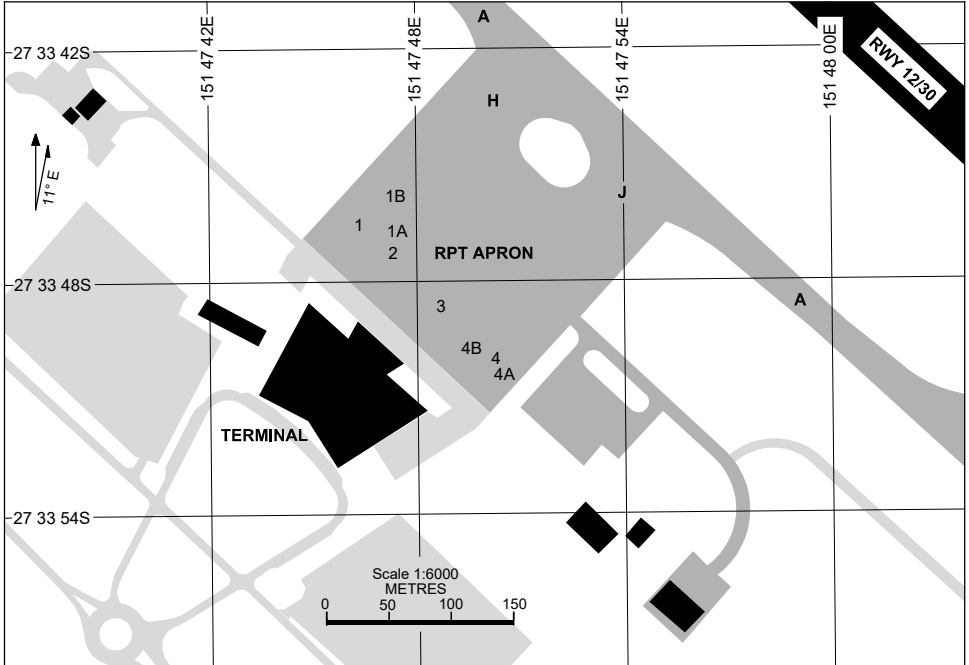
AERODROME LIGHTING	
RWY	TAXIWAY : GREEN CENTRELINE RL : PAL+AA 120.65 , SDBY (15 SEC)
12 <small>122</small>	PAPI 3.0° 75FT MIRL RTIL
<small>302</small> 30	PAPI 3.0° 75FT MIRL RTIL

NOTES

1. FIA FREQ 121.2 AVBL 500FT. ON GROUND COMMUNICATION WITH ATS DEPENDENT ON ACFT LOCATION. ALTERNATIVE FREQ 135.6.

17 JUN 2021

BRISBANE WEST WELLCAMP, QLD (YBWW)



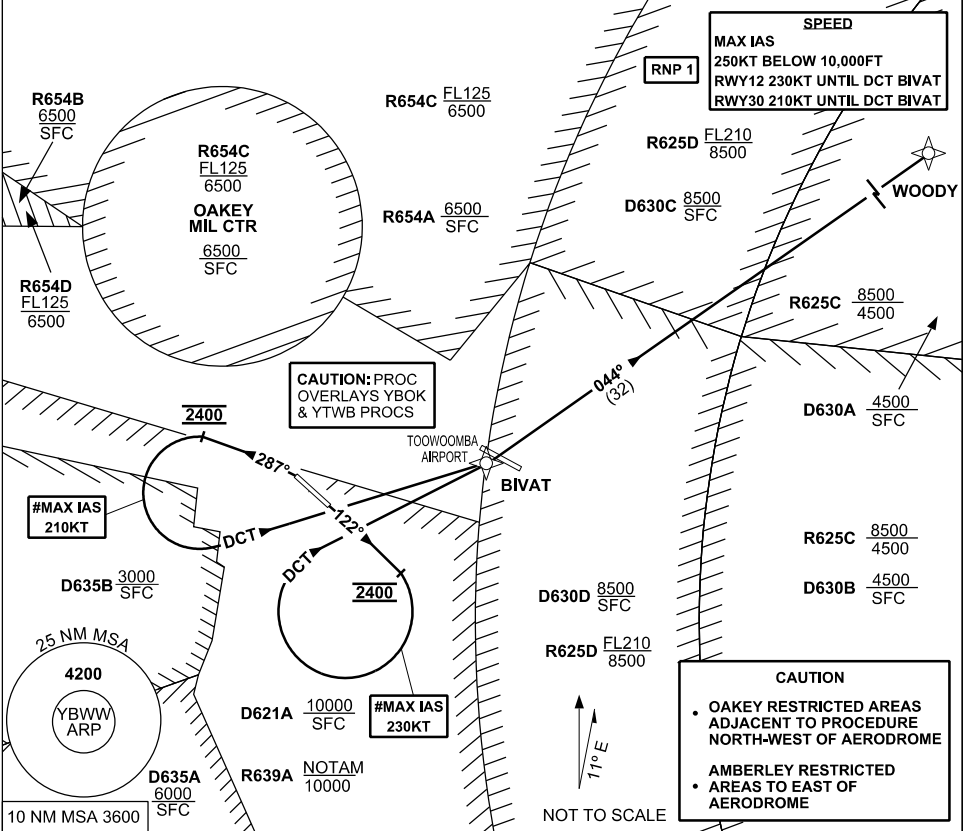
PARKING POSITION INFORMATION

STAND	CO-ORDINATES		ELEV (ft)	CAPACITY	HYDRANT FUEL
1	27 33 46.55S	151 47 46.36E	1470	B738/A320/E170	NIL
1A	27 33 46.78S	151 47 47.46E	1470	B744/B772	NIL
1B	27 33 45.83S	151 47 47.43E	1470	B748	NIL
2	27 33 47.25S	151 47 47.32E	1470	B738/A320/E170	NIL
3	27 33 48.64S	151 47 48.74E	1470	F100/E170/DH8D	NIL
4	27 33 49.94S	151 47 50.28E	1470	F100/DH8D	NIL
4A	27 33 50.38S	151 47 50.51E	1470	B350	NIL
4B	27 33 49.73S	151 47 49.60E	1470	B350	NIL

**STANDARD INSTRUMENT DEPARTURE (SID)
RWYS EAST (RNAV)
BRISBANE WEST WELLCAMP, QLD (YBWW)**

16 JUN 2022

AWIS 133.6	FIA BN CEN 121.2	CTAF+AFRU 127.65	PAL+AA 120.65		Bearings are Magnetic Elevations in FEET AMSL
---------------	---------------------	---------------------	------------------	--	--



WOODY ONE DEPARTURE

RWY 12

MAX IAS 230KT UNTIL tracking DCT BIVAT
GRAD 5% to 2400FT, thence 3.3%

- Track 122°
- **AT 2400FT turn RIGHT** track DCT to BIVAT
- Track 044° to WOODY
- Intercept flight planned route

RWY 30

MAX IAS 210KT UNTIL tracking DCT BIVAT
GRAD 6% to 2400FT, thence 3.3%

- **NOT BEFORE DER** turn **LEFT** track 287°
- **AT 2400FT turn LEFT** track DCT to BIVAT
- Track 044° to WOODY
- Intercept flight planned route

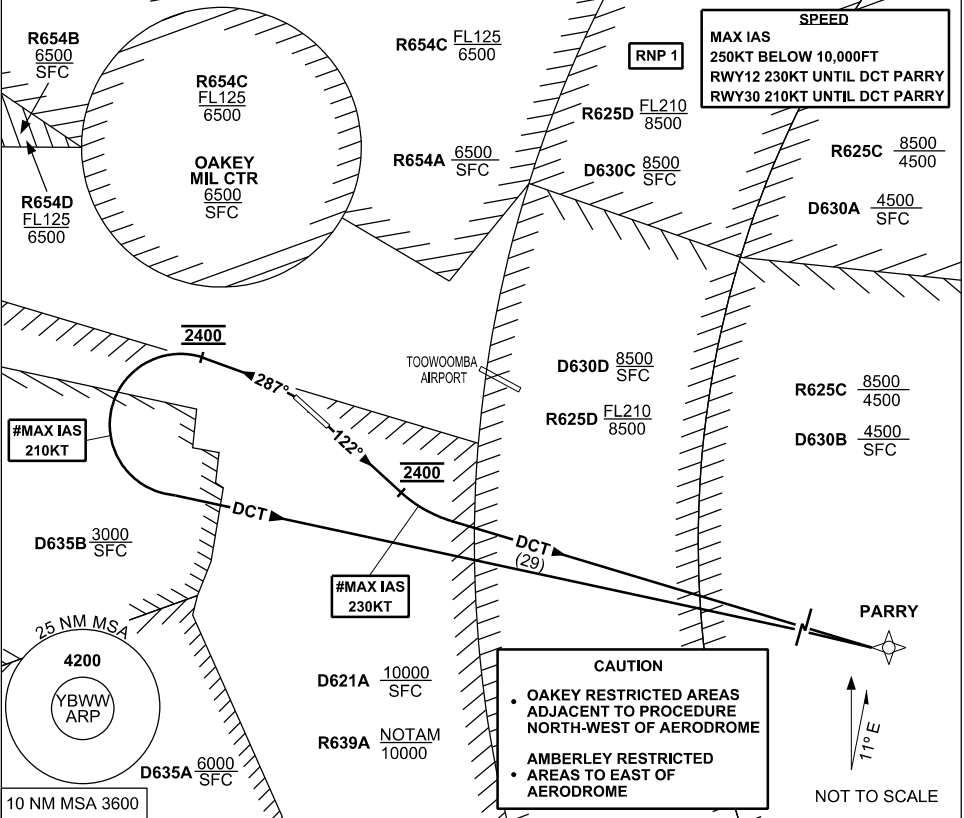
Changes: R654ABCD, OK MIL CTR

BWWDP01-171

STANDARD INSTRUMENT DEPARTURE (SID) RWYS EAST (JET) (RNAV) BRISBANE WEST WELLCAMP, QLD (YBWW)

16 JUN 2022

AWIS 133.6	FIA BN CEN 121.2	CTAF+AFRU 127.65	PAL+AA 120.65		Bearings are Magnetic Elevations in FEET AMSL
---------------	---------------------	---------------------	------------------	--	--



PARRY ONE DEPARTURE

RWY 12

- # MAX IAS 230KT UNTIL tracking DCT PARRY
- GRAD 5% to 2400FT, thence 3.3%
- Track 122°
- AT 2400FT turn **LEFT** track DCT to PARRY
- Intercept flight planned route

RWY 30

- # MAX IAS 210KT UNTIL tracking DCT PARRY
- GRAD 6% to 2400FT, thence 3.3%
- **NOT BEFORE DER** turn **LEFT** track 287°
- AT 2400FT turn **LEFT** track DCT to PARRY
- Intercept flight planned route

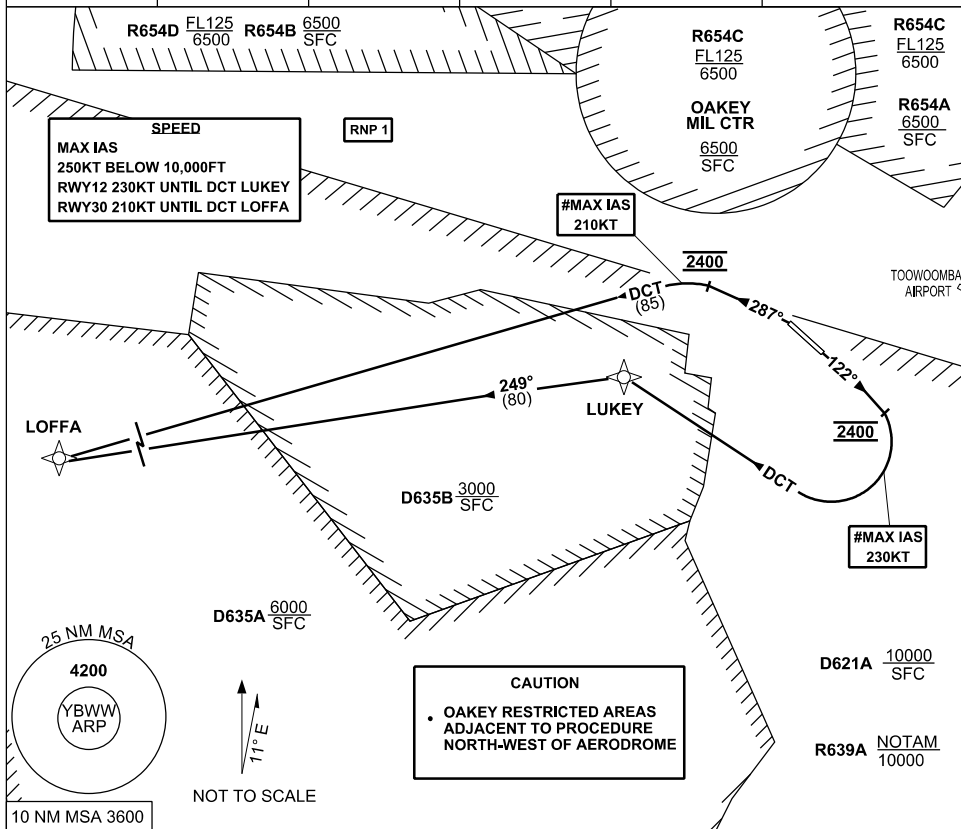
Changes: R654ABCD, OK MIL CTR

BWWDP02-171

STANDARD INSTRUMENT DEPARTURE (SID) RWYS WEST (RNAV) BRISBANE WEST WELLCAMP, QLD (YBWW)

16 JUN 2022

AWIS 133.6	FIA BN CEN 121.2	CTAF+AFRU 127.65	PAL+AA 120.65	Bearings are Magnetic Elevations in FEET AMSL
---------------	---------------------	---------------------	------------------	--



LOFFA ONE DEPARTURE

RWY 12

- # MAX IAS 230KT UNTIL tracking DCT LUKEY
- GRAD 5% to 2400FT, thence 3.3%
- Track 122°
- AT 2400FT turn **RIGHT** track DCT to LUKEY
- Turn **LEFT** Track 249° to LOFFA
- Intercept flight planned route

RWY 30

- # MAX IAS 210KT UNTIL tracking DCT LOFFA
- GRAD 6% to 2400FT, thence 3.3%
- **NOT BEFORE DER** turn **LEFT** Track 287°
- AT 2400FT turn **LEFT** track DCT to LOFFA
- Intercept flight planned route

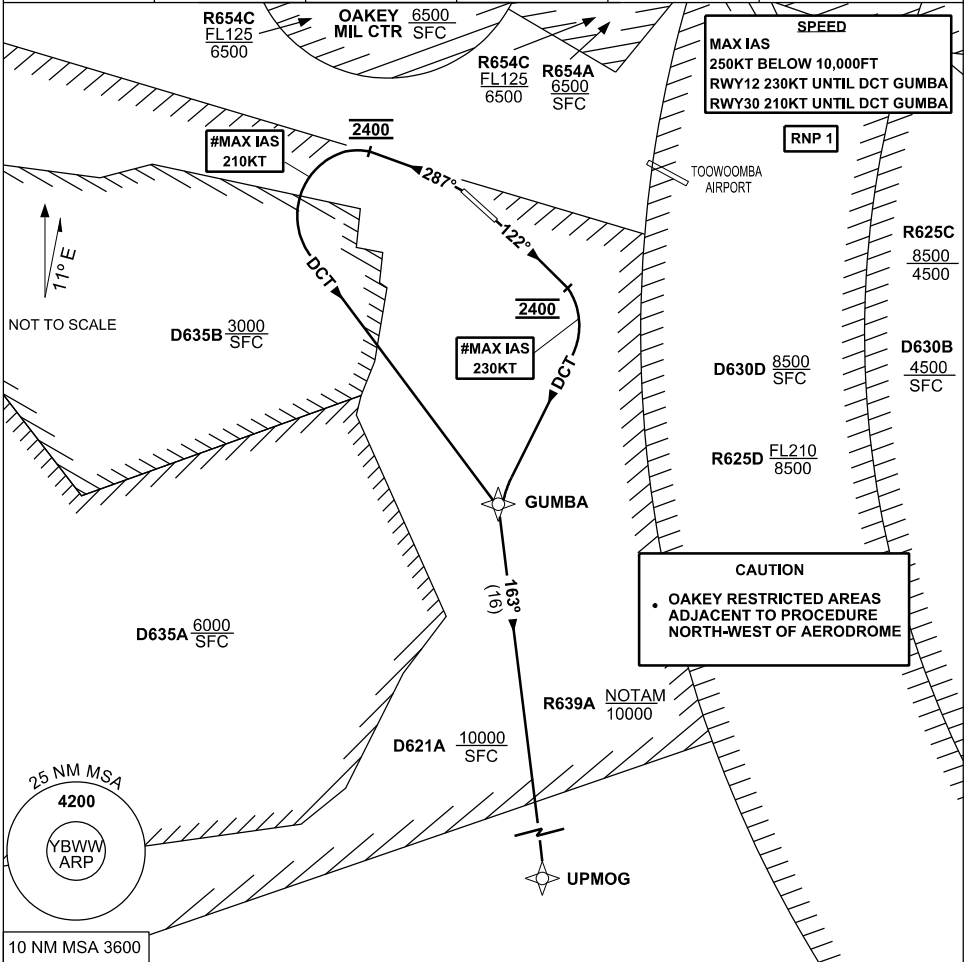
Changes: R654ABCD, OK MIL CTR

BWWDPO3-171

**STANDARD INSTRUMENT DEPARTURE (SID)
RWYS SOUTH (RNAV)
BRISBANE WEST WELLCAMP, QLD (YBWW)**

16 JUN 2022

AWIS 133.6	FIA BN CEN 121.2	CTAF+AFRU 127.65	PAL+AA 120.65	Bearings are Magnetic Elevations in FEET AMSL
---------------	---------------------	---------------------	------------------	--



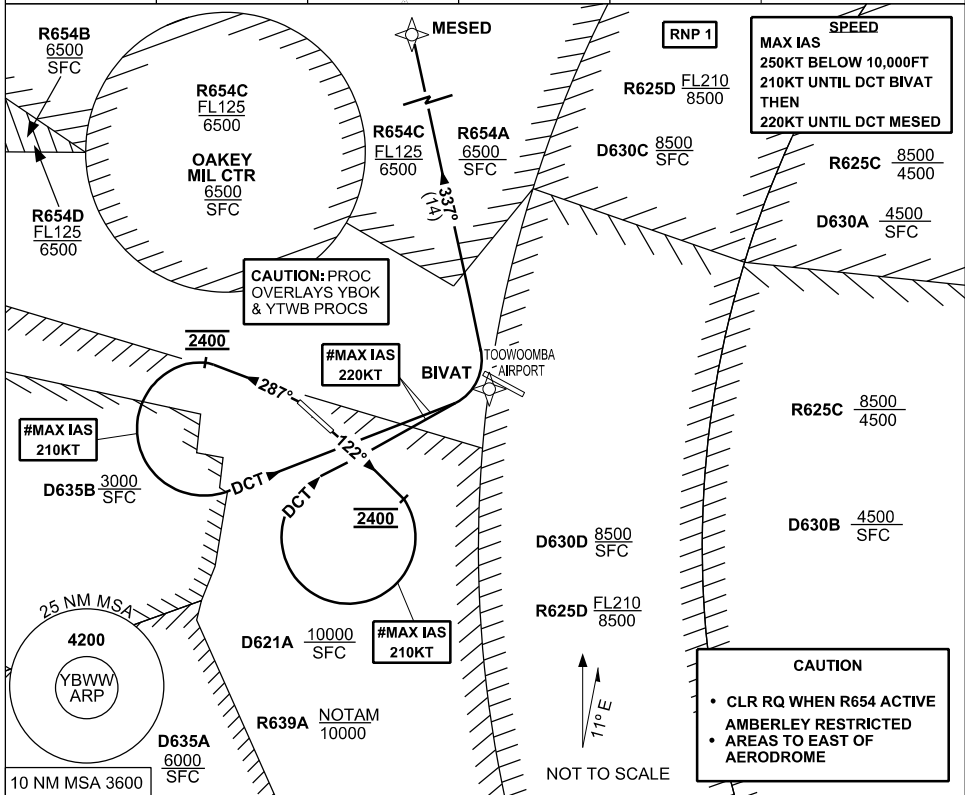
Changes: R654ABCD, OK MIL CTR

BWWDP04-171

STANDARD INSTRUMENT DEPARTURE (SID) RWYS NORTH (RNAV) BRISBANE WEST WELLCAMP, QLD (YBWW)

16 JUN 2022

AWIS 133.6	FIA BN CEN 121.2	CTAF+AFRU 127.65	PAL+AA 120.65		Bearings are Magnetic Elevations in FEET AMSL
---------------	---------------------	---------------------	------------------	--	--



MESED ONE DEPARTURE

RWY 12

- #MAX IAS 210KT** UNTIL tracking DCT BIVAT THEN 220KT UNTIL tracking DCT MESED
- GRAD 5% to 2400FT, thence 3.3%
- Track 122°
 - AT 2400FT turn **RIGHT** track DCT to BIVAT
 - Track 337° to MESED
 - Intercept flight planned route

RWY 30

- #MAX IAS 210KT** UNTIL tracking DCT BIVAT THEN 220KT UNTIL tracking DCT MESED
- GRAD 6% to 2400FT, thence 3.3%
- **NOT BEFORE DER** turn **LEFT** Track 287°
 - AT 2400FT turn **LEFT** track DCT to BIVAT
 - Track 337° to MESED
 - Intercept flight planned route

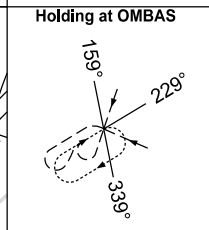
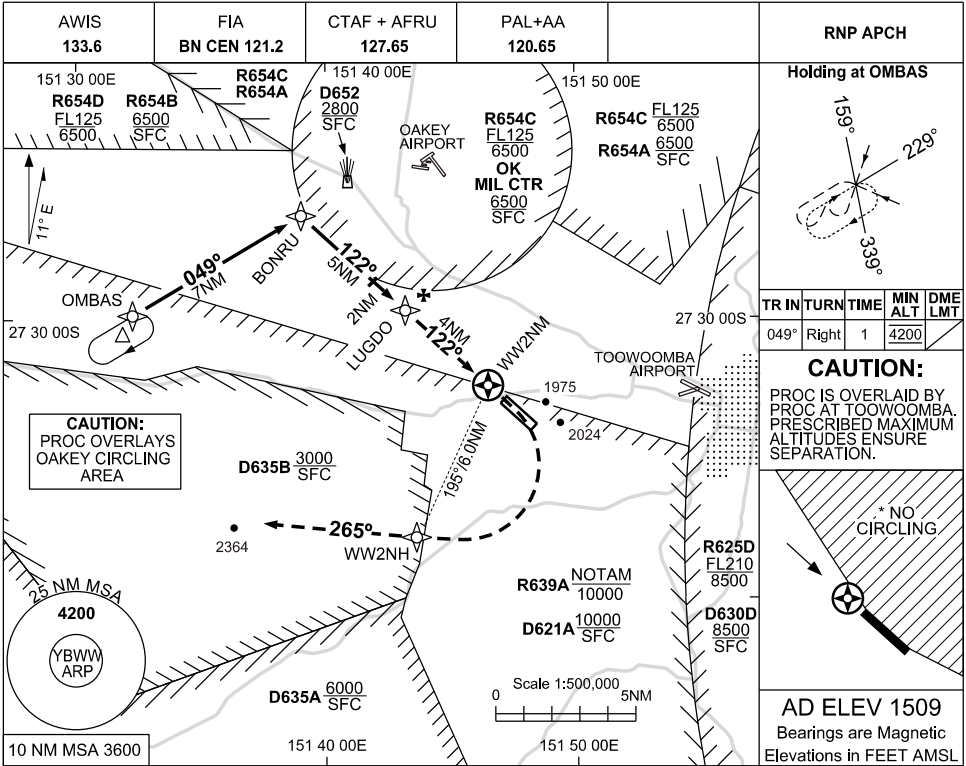
Changes: R654ABCD, OK MIL CTR

BWWDP05-171

16 JUN 2022

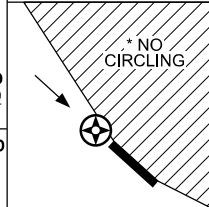
USE QNH
BRISBANE WEST WELLCAMP, QLD (YBWW)

RNP Y RWY 12



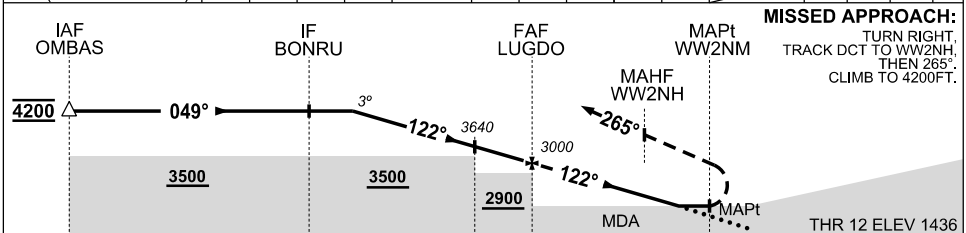
TR IN	TURN	TIME	MIN ALT	DME LMT
049°	Right	1	4200	

CAUTION:
PROC IS OVERLAID BY PROC AT TOOWOOMBA. PRESCRIBED MAXIMUM ALTITUDES ENSURE SEPARATION.



AD ELEV 1509
Bearings are Magnetic
Elevations in FEET AMSL

NM TO NEXT WPT	3.8	3	2	1	LUGDO	3	2	1.1	1	0.8	WW2NM				
ALT (3° APCH PATH)	4200	3960	3640	3320	3000	2680	2360	2090	2040	1980					



MISSED APPROACH:
TURN RIGHT
TRACK DCT TO WW2NH,
THEN 285°
CLIMB TO 4200FT.

NM TO WW2NM: 16, 9, 6, 4, 0.8

CATEGORY	A	B	C	D
LNAV (2.5% MAP)		2090	(654 - 3.6)	
LNAV (5% MAP) #		1980	(544 - 3.0)	
CIRCLING *	2430	(921 - 2.4)	NOT AUTHORISED	
ALTERNATE		(1421 - 4.4)	(1611 - 6.0)	(1611 - 7.0)

- NOTES**
- MAX IAS HOLDING INITIAL & MAP : 210KT.
 - NO CIRCLING EAST OF RWY 12/30.
 - MIN MAP GRAD 5% TO 2500FT, THEN 2.5%.
 - PROC NOT AVBL WHEN YBOK AIRSPACE ACTIVE.
 - PRD OPR HR VIA NOTAM EXCEPT D652: H24 D835AB: HJ

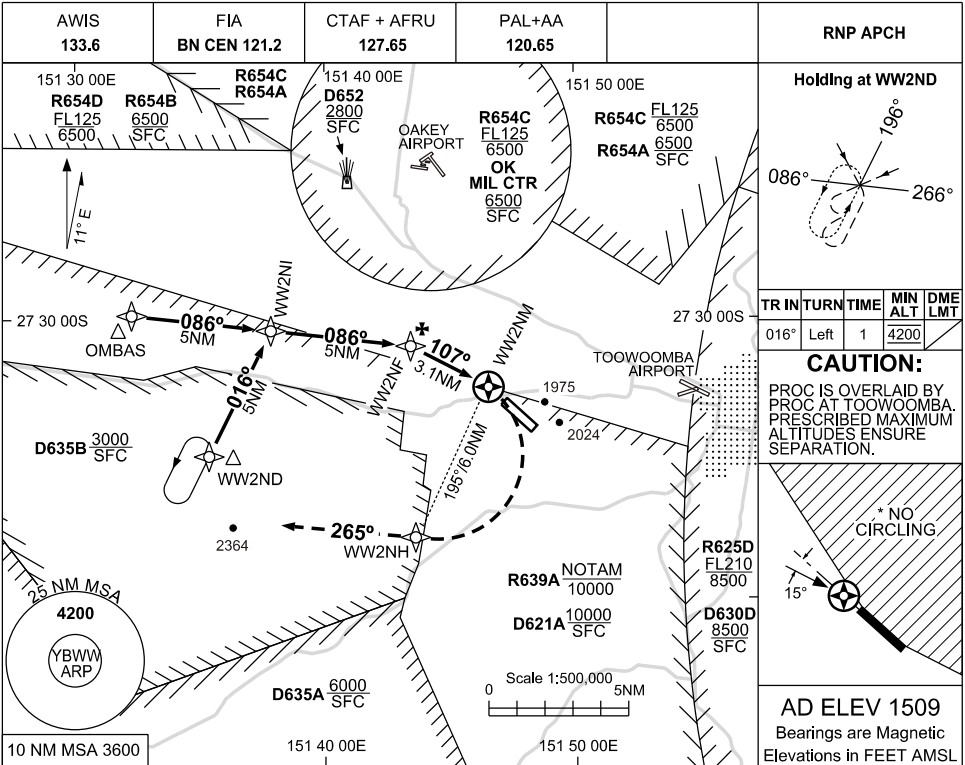
Changes: R654ABCD, OK MIL CTR

BWWGN01-171

16 JUN 2022

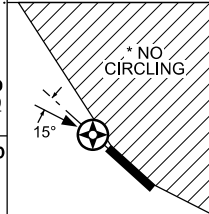
USE QNH
BRISBANE WEST WELLCAMP, QLD (YBWW)

RNP Z RWY 12



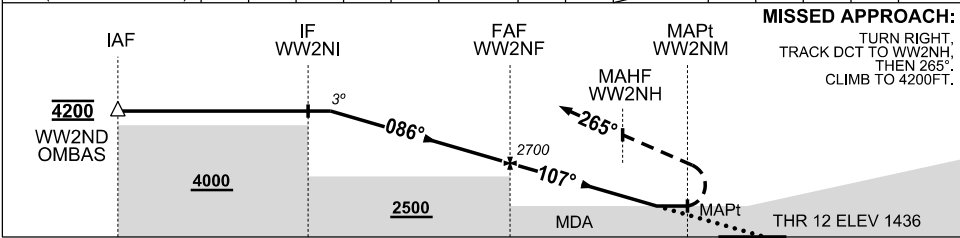
TR IN	TURN	TIME	MIN ALT	DME LMT
016°	Left	1	4200	

CAUTION:
PROC IS OVERLAID BY PROC AT TOOWOOMBA. PRESCRIBED MAXIMUM ALTITUDES ENSURE SEPARATION.



AD ELEV 1509
Bearings are Magnetic
Elevations in FEET AMSL

NM TO NEXT WPT	4.7	4	3	2	1	WW2NF	2	1.2	WW2NM
ALT (3° APCH PATH)	4200	3980	3660	3340	3020	2700	2360	2120	



NM TO WW2NM: 13.1, 8.1, 3.1, 0.8

NOTES
1. MAX IAS HOLDING INITIAL & MAP : 210KT.
*2. NO CIRCLING EAST OF RWY 12/30.
3. PRD OPR HR VIA NOTAM EXCEPT D652: H24 D635AB: HJ

CATEGORY	A	B	C	D
LNAV	2120 (684 - 3.8)		2120 (684 - 5.0)	NOT AUTHORISED
CIRCLING *	2430 (921 - 2.4)		NOT AUTHORISED	
ALTERNATE	(1421 - 4.4)		(1611 - 6.0)	

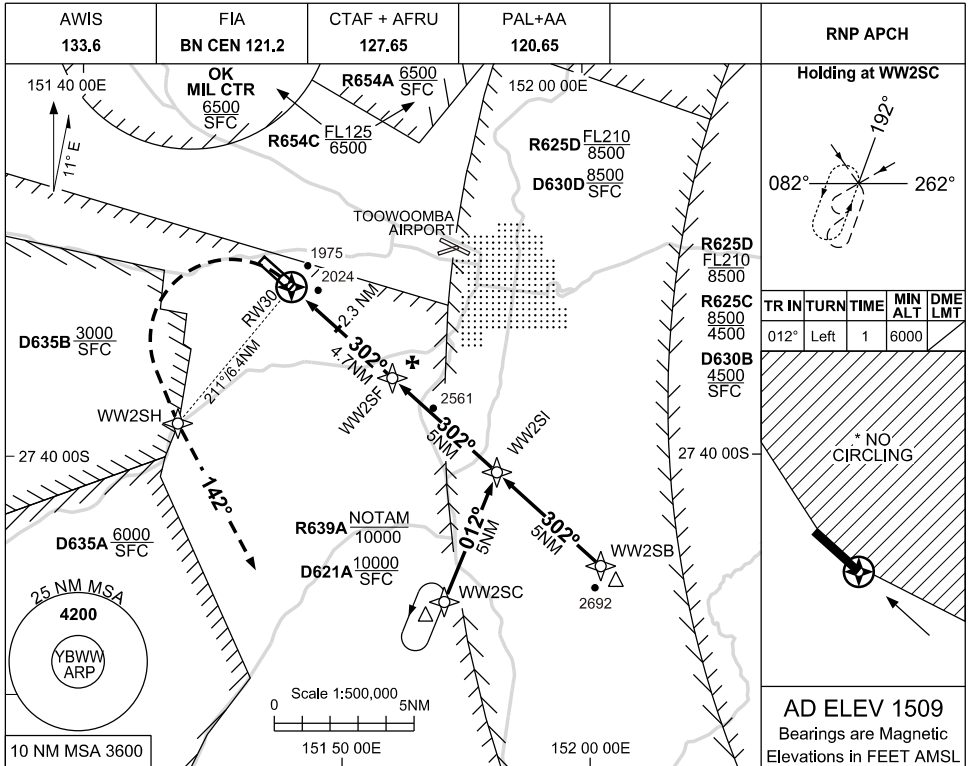
Changes: R654ABCD, OK MIL CTR

BWWGN02-171

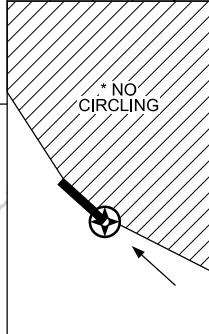
23 MAR 2023

USE QNH
BRISBANE WEST WELLCAMP, QLD (YBWW)

RNP RWY 30

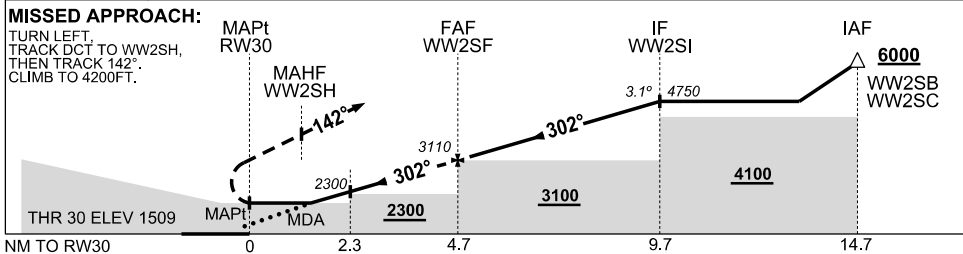


TR	IN	TURN	TIME	MIN ALT	DME LMT
012°	Left	1		6000	



AD ELEV 1509
Bearings are Magnetic
Elevations in FEET AMSL

NM TO NEXT WPT	RW30	2.2	3	4	WW2SF	1	2	3	4	WW2SI	1	2	3	3.8
ALT (3.1° APCH PATH)		2270	2550	2880	3110	3430	3760	4090	4420	4750	5080	5410	5740	6000



NOTES

1. MAX IAS HOLDING, INITIAL & MAP : 210KT.
- *2. NO CIRCLING EAST OF RWY 12/30.
3. PRD OPR HR VIA NOTAM EXCEPT D635AB: HJ

CATEGORY	A	B	C	D
LNAV	2270 (761 - 4.2)			
CIRCLING *	2430 (921 - 2.4)		NOT AUTHORISED	
ALTERNATE	(1421 - 4.4)		(1611 - 6.0)	(1611 - 7.0)

Changes: PROFILE DEPICTION, Editorial.

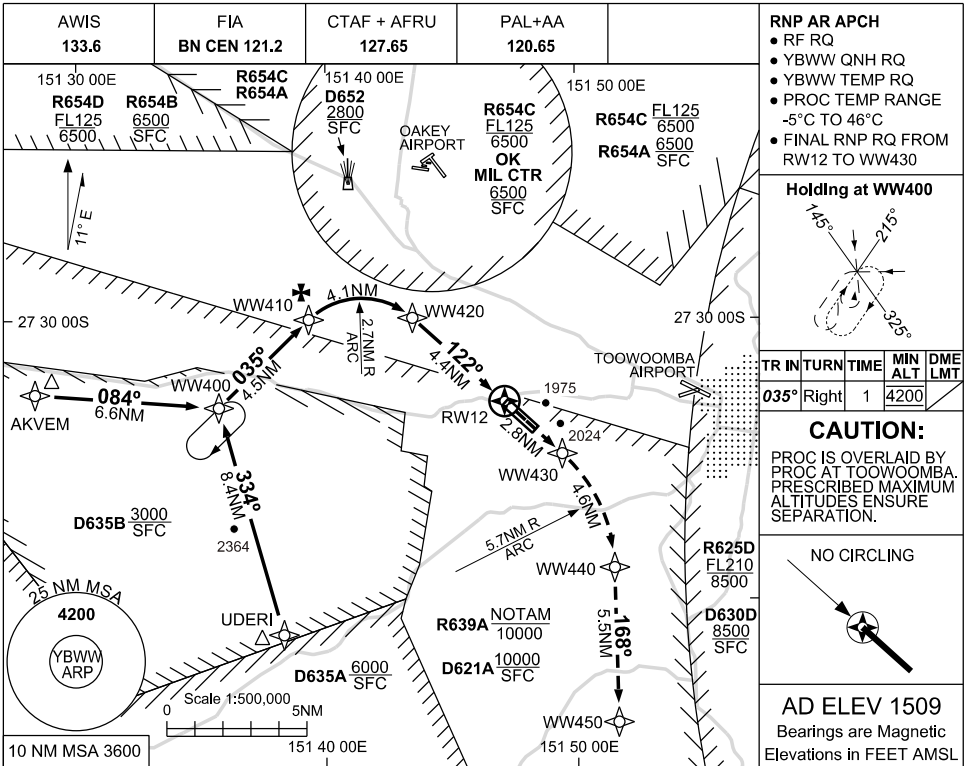
BWWGN03-174



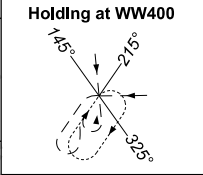
FOR CASA APPROVED OPERATORS ONLY

USE QNH
RNP X RWY 12 (AR)
BRISBANE WEST WELLCAMP, QLD (YBWW)

16 JUN 2022

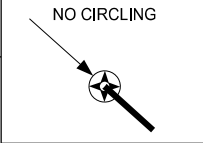


- RNP AR APCH**
- RF RQ
 - YBWW QNH RQ
 - YBWW TEMP RQ
 - PROC TEMP RANGE -5°C TO 46°C
 - FINAL RNP RQ FROM RW12 TO WW430



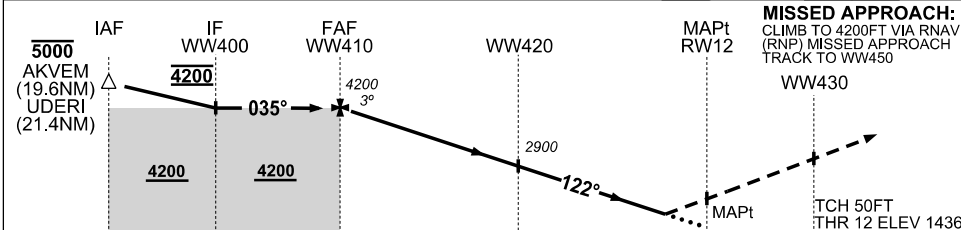
TR IN	TURN	TIME	MIN ALT	DME LMT
035°	Right	1	4200	

CAUTION:
PROC IS OVERLAID BY PROC AT TOOWOOMBA. PRESCRIBED MAXIMUM ALTITUDES ENSURE SEPARATION.



AD ELEV 1509
Bearings are Magnetic
Elevations in FEET AMSL

NM TO NEXT WPT	WW410	3	2	1	WW420	4	3	2	1	RW12
ALT (3° APCH PATH)	4200	3850	3530	3220	2900	2760	2440	2120	1820	



MISSED APPROACH:
CLIMB TO 4200FT VIA RNAV (RNP) MISSED APPROACH TRACK TO WW450

TCH 50FT
THR 12 ELEV 1436

- NOTES**
1. MAX IAS:
INITIAL UDERI : 220KT
HOLDING WW400 : 200KT
 2. TRANSITION TO MISSED APPROACH RNP FOR LATERAL GUIDANCE MUST NOT BE INITIATED PRIOR TO THE ALONG-TRACK POSITION OF THE DA/H
 3. PAPI NOT COINCIDENT WITH VPA
 4. PRD OPR HR VIA NOTAM EXCEPT D652 : H24 D635AB: HJ

CATEGORY	A	B	C	D
RNP (0.3)		1920 (484 - 2.6)		
RNP (0.23)		1820 (384 - 2.2)		
CIRCLING	NOT AUTHORISED			
ALTERNATE	(1419 - 4.4)		(1609 - 6.0)	(1609 - 7.0)

Changes: R654ABCD, OK MIL CTR

BWWGN04-171