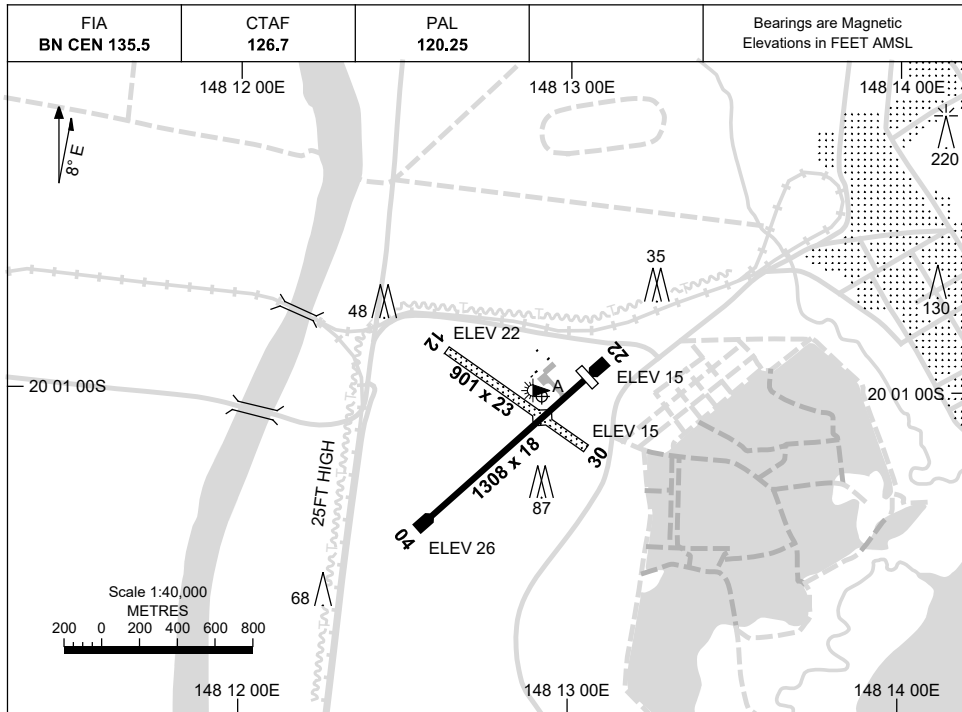


8 SEP 2022

AD ELEV 26  
20 01 04S 148 12 55E

**AERODROME CHART**  
**BOWEN, QLD (YBWN)**



| <b>AERODROME LIGHTING</b>    |   |
|------------------------------|---|
| <b>RWY</b>                   | TAXIWAY : BLUE EDGE<br>RL : PAL 120.25, SDBY (18 SEC) |
| <b>04</b> <small>040</small> | LIRL  |
| <small>220</small> <b>22</b> | LIRL  |
| <b>12</b> <small>118</small> | LIRL  |
| <small>298</small> <b>30</b> | LIRL  |

**NOTES**

1. FIA FREQ 135.5 AVBL CIRCUIT AREA.

Changes: TWY A LABEL.

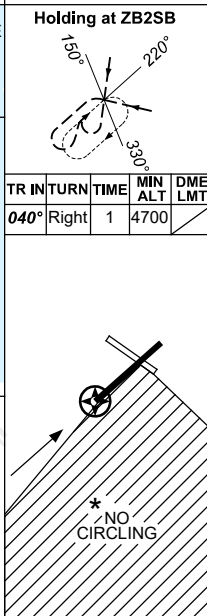
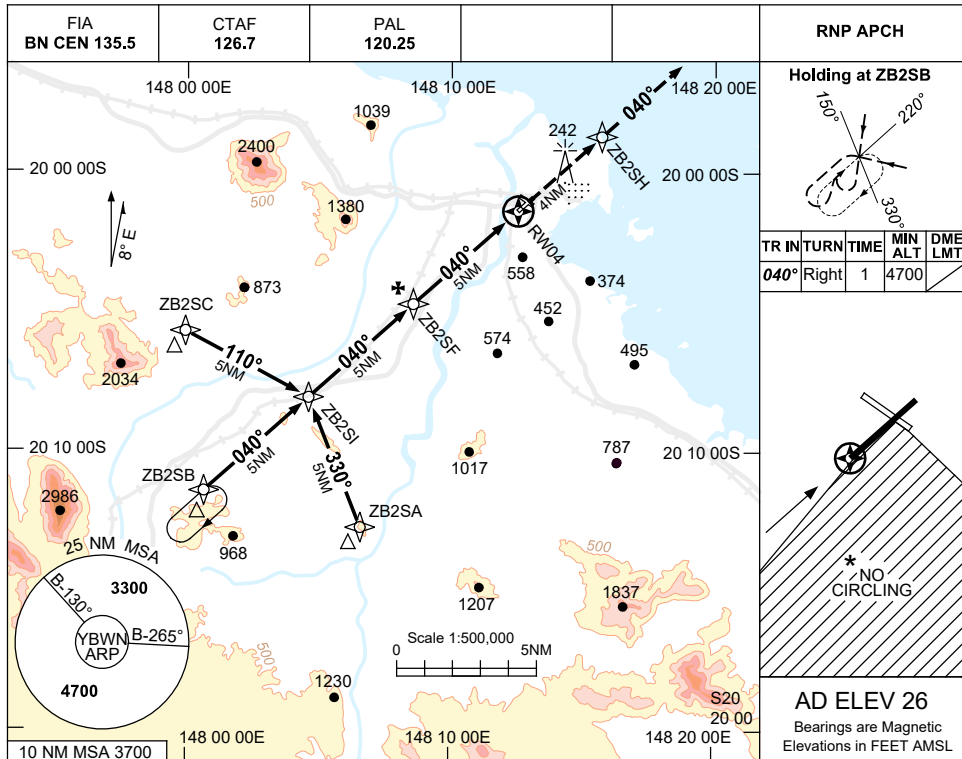
BWNAD01-172

USE QNH

RNP S

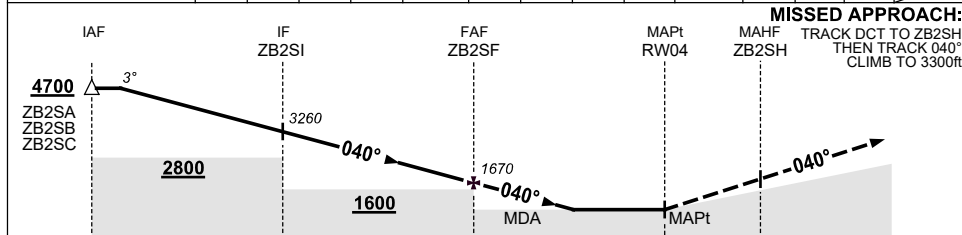
**BOWEN, QLD (YBWN)**

21 MAR 2024



**AD ELEV 26**  
Bearings are Magnetic  
Elevations in FEET AMSL

|                    |      |      |      |      |       |      |      |      |      |       |      |      |     |      |
|--------------------|------|------|------|------|-------|------|------|------|------|-------|------|------|-----|------|
| NM TO NEXT WPT     | 4.5  | 3    | 2    | 1    | ZB2SI | 4    | 3    | 2    | 1    | ZB2SF | 4    | 3.1  | 2.8 | RW04 |
| ALT (3° APCH PATH) | 4700 | 4220 | 3900 | 3580 | 3260  | 2940 | 2620 | 2310 | 1990 | 1670  | 1350 | 1070 | 970 |      |



- NOTES**
- MAX IAS: INITIAL : 210KT.
  - NO CIRCLING IN SECT S OF RWY 04/22 AND RWY 12/30.
  - HLDG OVERLAPS WITH YBPN RNP RWY 11 HLDG. ACFT SEPERATION NOT ASSURED.
  - COLOUR: SEE SPEC NOTICES.

| CATEGORY   | A             | B | C              | D              |
|------------|---------------|---|----------------|----------------|
| CIRCLING * | 970 (944-2.4) |   | 1070(1044-4.0) | NOT APPLICABLE |
| ALTERNATE  | (1444-4.4)    |   | (1544-6.0)     |                |

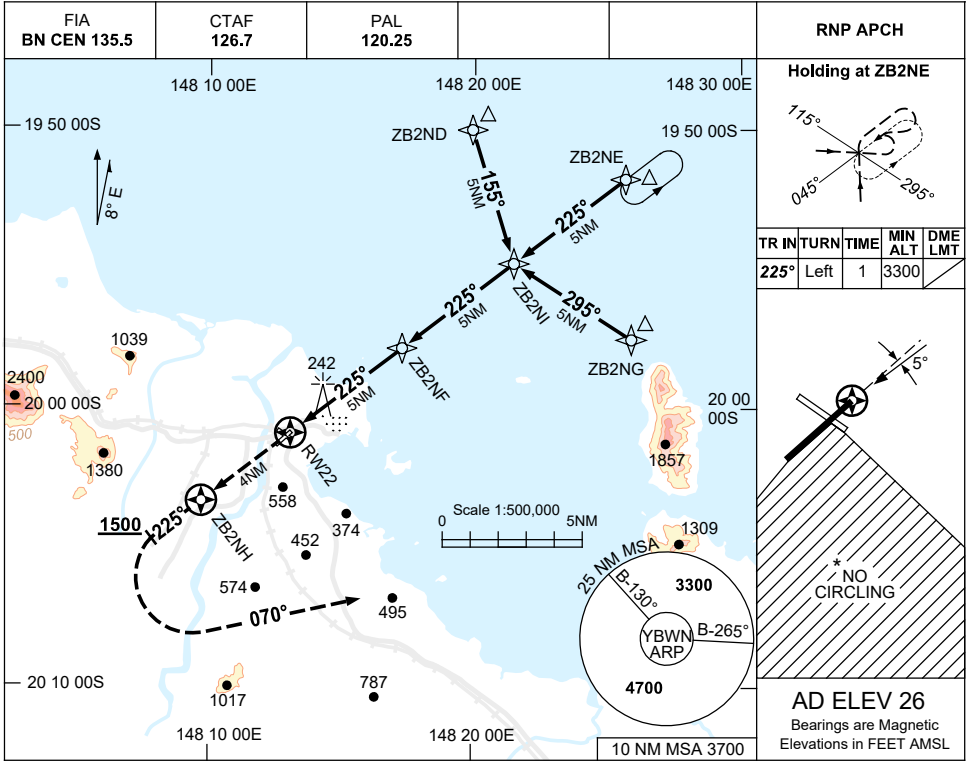
Changes: WPT NAMING CONVENTION, NOTES. BWNGN01-178

USE QNH

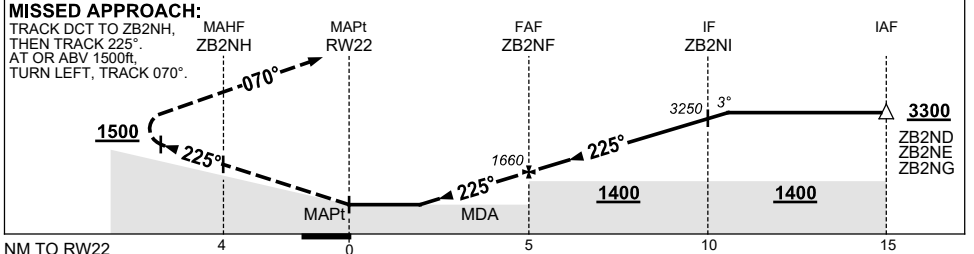
RNP N

21 MAR 2024

**BOWEN, QLD (YBWN)**



| NM TO NEXT WPT     | RW22 | 2.8 | 3    | 3.2  | 4    | ZB2NF | 1    | 2    | 3    | 4    | ZB2NI | 0.2  |
|--------------------|------|-----|------|------|------|-------|------|------|------|------|-------|------|
| ALT (3° APCH PATH) |      | 970 | 1020 | 1070 | 1340 | 1660  | 1980 | 2290 | 2610 | 2930 | 3250  | 3300 |



**NOTES**

| CATEGORY   | A             | B               | C | D              |
|------------|---------------|-----------------|---|----------------|
| CIRCLING * | 970 (944-2.4) | 1070 (1044-4.0) |   | NOT APPLICABLE |
| ALTERNATE  | (1444-4.4)    | (1544-6.0)      |   |                |

1. MAX IAS:  
 INITIAL : 210KT.  
 MAP TURN : 190KT.
- \*2. NO CIRCLING IN SECT'S OF RWY 04/22 AND RWY 12/30.
3. COLOUR: SEE SPEC NOTICES.

Changes: WPT NAMING CONVENTION, MISSED APCH TEXT, Editorial.

BWNGN02-178