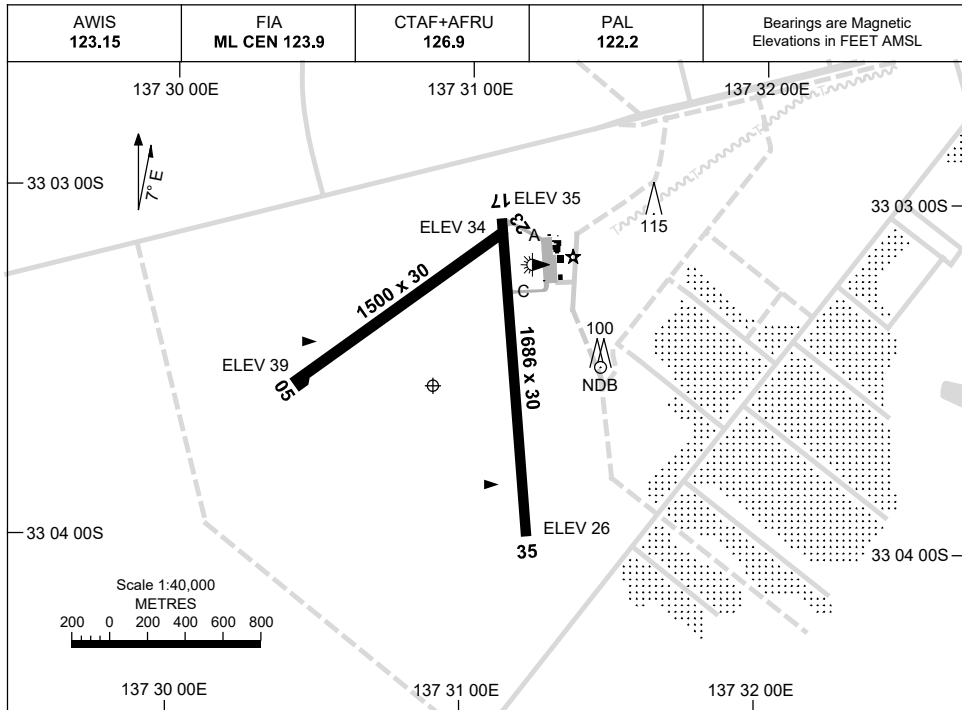


23 MAR 2023

AD ELEV 41
33 03 32S 137 30 52E

AERODROME CHART
WHYALLA, SA (YWHA)



	AERODROME LIGHTING
RWY	ABN : ALT WG 8 SEC TAXIWAY : BLUE EDGE TWY A AND C RL : PAL 122.2 , SDBY (15 SEC)
17 ¹⁶⁷	LIRL
³⁴⁷ 35	LIRL
05 ⁰⁴⁷	NIL
²²⁷ 23	NIL

NOTES

1. FIA FREQ 123.9 AVBL CIRCUIT AREA.

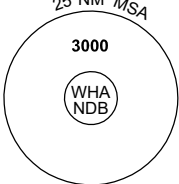
Changes: RWY 05/23 SEALED, TORA, THR ELEV, TURNING NODE, TWY B DCMSD, BLUE EDGE, BUILDINGS, APRON, RWY 17/35 WID.

WHAAD01-174

GNSS ARRIVAL PROCEDURES WHYALLA, SA (YWHA)


8 SEP 2022

AWIS 123.15	FIA ML CEN 123.9	CTAF+AFRU 126.9	PAL 122.2		Bearings are Magnetic Elevations in FEET AMSL
----------------	---------------------	--------------------	--------------	--	--

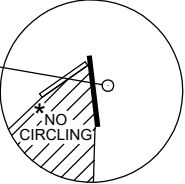


25 NM MSA
3000
WHA NDB

REFERENCE WAYPOINT WHA NDB



WHA NDB 371




NO CIRCLING

* NO CIRCLING IN SECTOR WEST OF RWY 17/35 AND STH OF RWY 05/23.

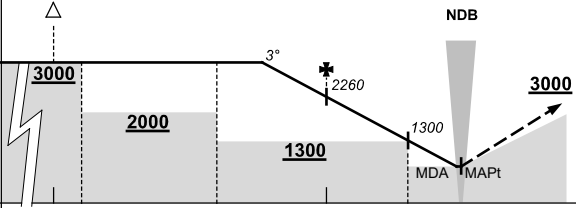
10 NM MSA 1900

AD ELEV 41

SECTOR A



WHA NDB
274°
360°



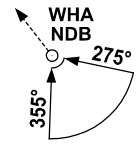
NDB

MISSED APPROACH:

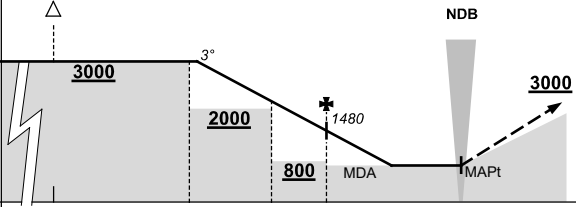
CLIMB ON TRACK TO 3000FT.

NM TO WHA NDB	25	15	14	9	5	2	0						
CIRCLING MINIMA	A,B: 720-2.4			C: 1240-4.0			D: N/A						
NM TO WHA NDB	7.3	7	6	5	4	3	2	1.8	0.2				
ALT (3° APCH PATH)	3000	2890	2580	2260	1940	1620	1300	1240	720				

SECTOR B



WHA NDB
275°
360°



NDB

MISSED APPROACH:

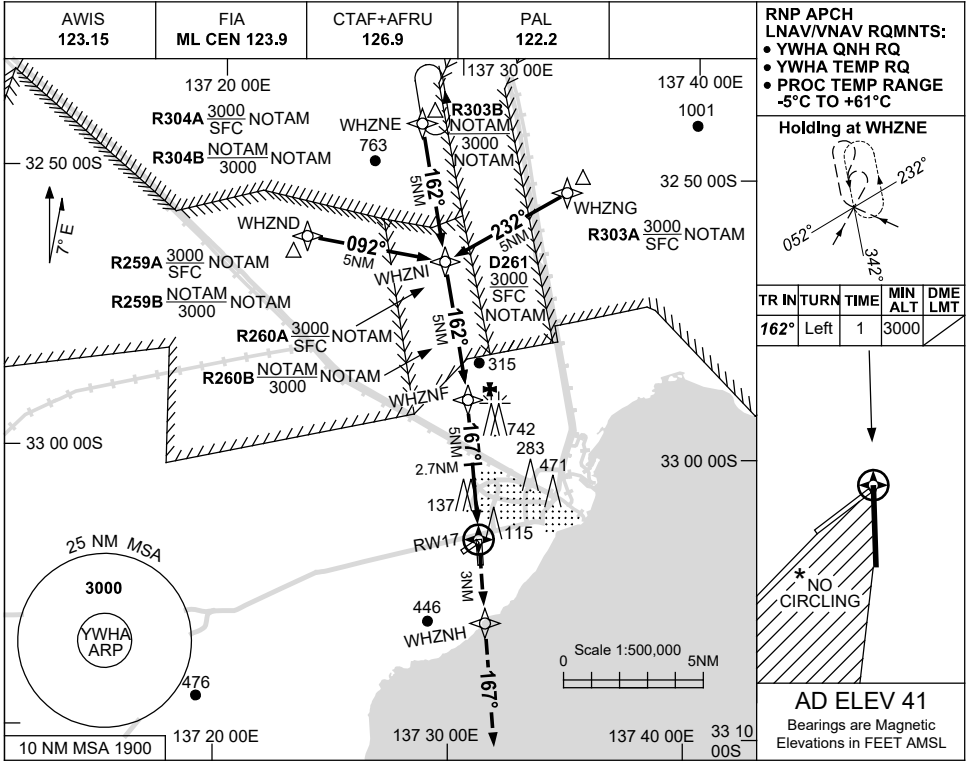
CLIMB ON TRACK TO 3000FT.

NM TO WHA NDB	25	15	10	7	5	0							
CIRCLING MINIMA	A,B: 710-2.4			C: 1240-4.0			D: N/A						
NM TO WHA NDB	9.8	9	8	7	6	5	4.2	3	2.6				
ALT (3° APCH PATH)	3000	2750	2430	2110	1800	1480	1240	840	710				

USE QNH

RNP RWY 17
WHYALLA, SA (YWHA)

1 DEC 2022



RNP APCH LNAV/VNAV RQMTS:

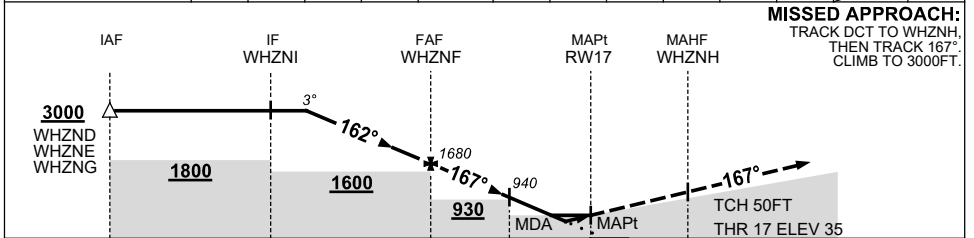
- YWHA QNH RQ
- YWHA TEMP RQ
- PROC TEMP RANGE -5°C TO +61°C

Holding at WHZNE

TR IN	TURN	TIME	MIN ALT	DME LMT
162°	Left	1	3000	

AD ELEV 41
Bearings are Magnetic
Elevations in FEET AMSL

NM TO NEXT WPT	4.2	3	2	1	WHZNF	4	3	2.7	2	1.6	1	RW17
ALT (3° APCH PATH)	3000	2630	2310	2000	1680	1360	1040	940	720	600	400	



NOTES

1. MAX IAS:
HOLDING: 210KT.
INITIAL : 210KT.
- * 2. NO CIRCLING IN SECTOR WEST OF RWY 17/35 AND STH OF RWY 05/23.
3. CLR RQ WHEN RESTRICTED AREAS ACT.

CATEGORY	A	B	C	D
LNAV/VNAV		400 (365-2.0)		NOT APPLICABLE
LNAV		600 (559-3.2)		
CIRCLING *	710 (669-2.4)		1240 (1199-4.0)	
ALTERNATE	(1169-4.4)		(1699-6.0)	

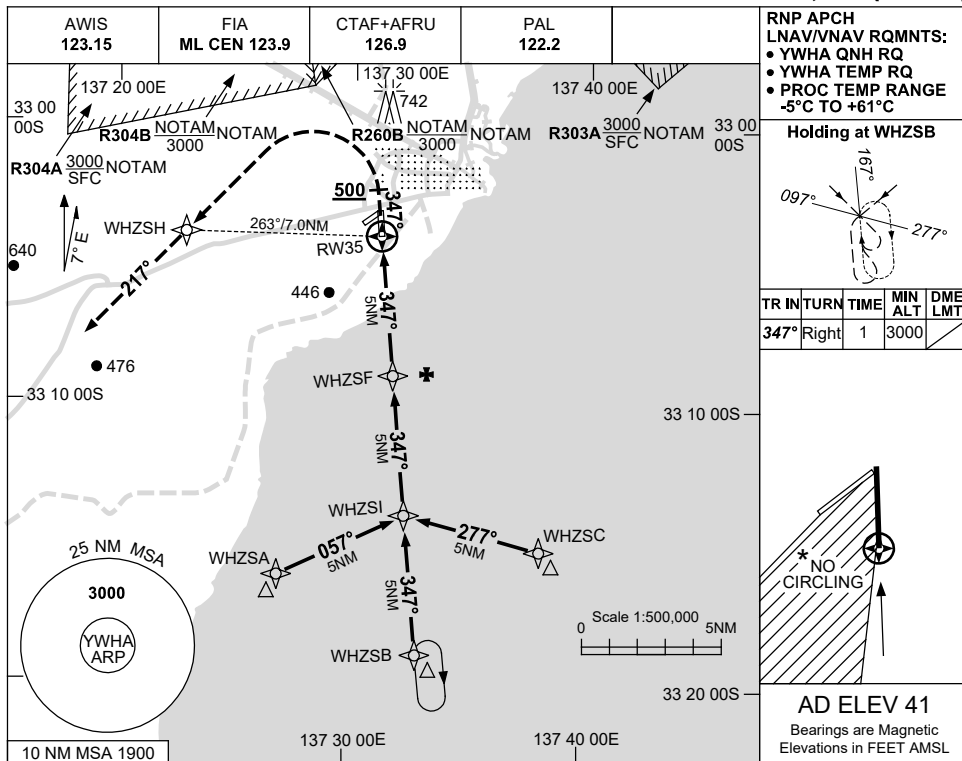
Changes: CHART TITLE, PBN SPECIFICATION BOX.

WHAGN01-173

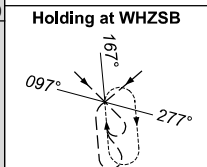
USE QNH

RNP RWY 35
WHYALLA, SA (YWHA)

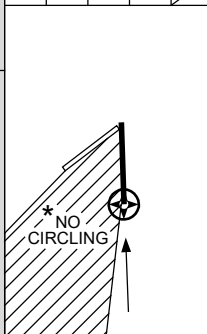
1 DEC 2022



RNP APCH
LNAV/VNAV RQMNTS:
• YWHA QNH RQ
• YWHA TEMP RQ
• PROC TEMP RANGE
-5°C TO +61°C

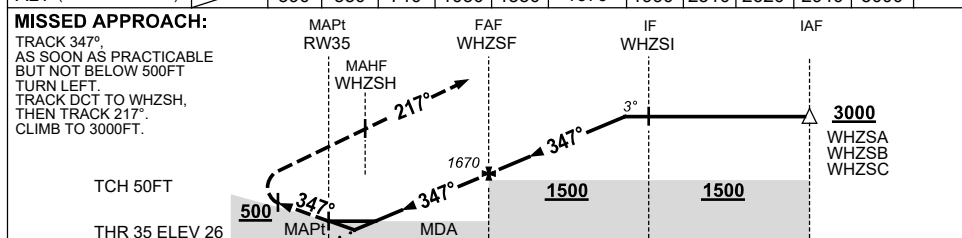


TR	IN	TURN	TIME	MIN ALT	DME LMT
347°	Right		1	3000	



AD ELEV 41
Bearings are Magnetic
Elevations in FEET AMSL

NM TO NEXT WPT	RW35	1	1.5	2	3	4	WHZSF	1	2	3	4	4.2	
ALT (3° APCH PATH)		390	550	710	1030	1350	1670	1990	2310	2620	2940	3000	



NM TO RW35: 0, 5, 10, 15

NOTES

CATEGORY	A	B	C	D
LNAV/VNAV		390 (364-2.0)		NOT APPLICABLE
LNAV		550 (524-3.0)		
CIRCLING *	710 (669-2.4)		1240 (1199-4.0)	
ALTERNATE	(1169-4.4)		(1699-6.0)	

- MAX IAS:
INITIAL : 210KT.
MAP TURN: 200KT.
- *2. NO CIRCLING IN SECTOR WEST OF RWY 17/35 AND STH OF RWY 05/23.

Changes: CHART TITLE, PBN SPECIFICATION BOX.

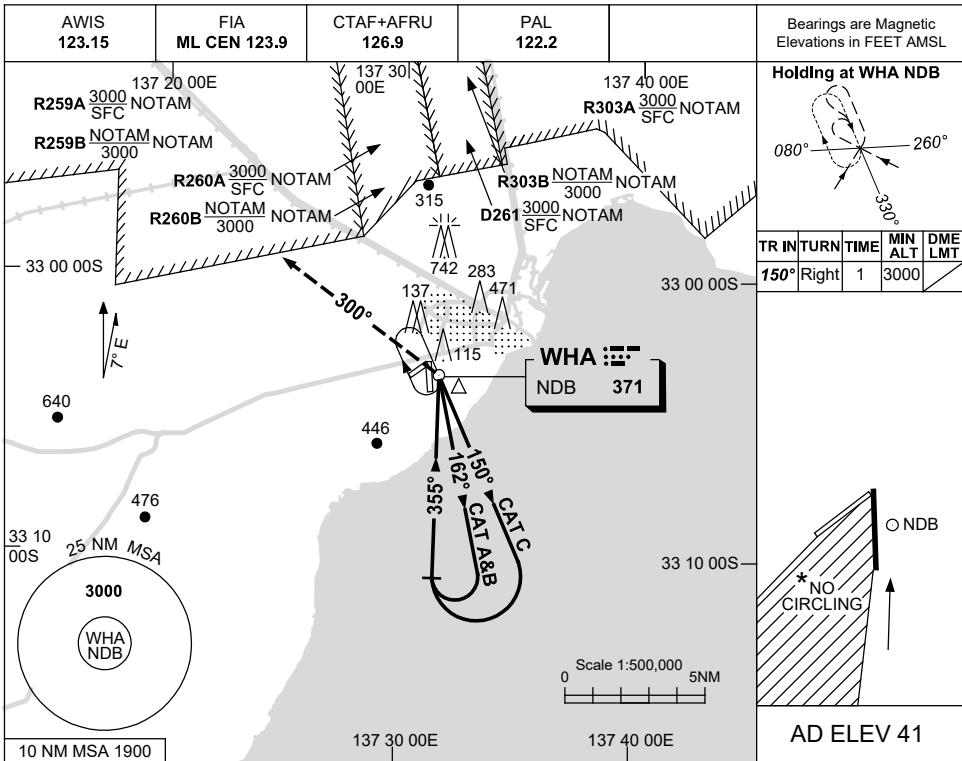
WHAGN02-173

USE QNH

NDB RWY 35

WHYALLA, SA (YWHA)

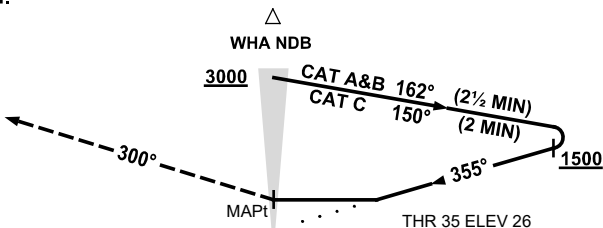
8 SEP 2022



DME DIST	NOT APPLICABLE						
ALT							

MISSED APPROACH:

TURN LEFT, TRACK 300°. CLIMB TO 3000FT.



NOTES

- MAX IAS: INITIAL : 220KT.
- NO CIRCLING IN SECTOR WEST OF RWY 17/35 AND STH OF RWY 05/23.
- CLR RQ WHEN RESTRICTED AREAS ACT.

CATEGORY	A	B	C	D
S-I NDB	600 (574-3.2)			NOT APPLICABLE
CIRCLING *	710 (669-2.4)	1240 (1199-4.0)		
ALTERNATE	(1169-4.4)		(1699-6.0)	

Changes: AWIS FREQUENCY.

WHANB01-172