

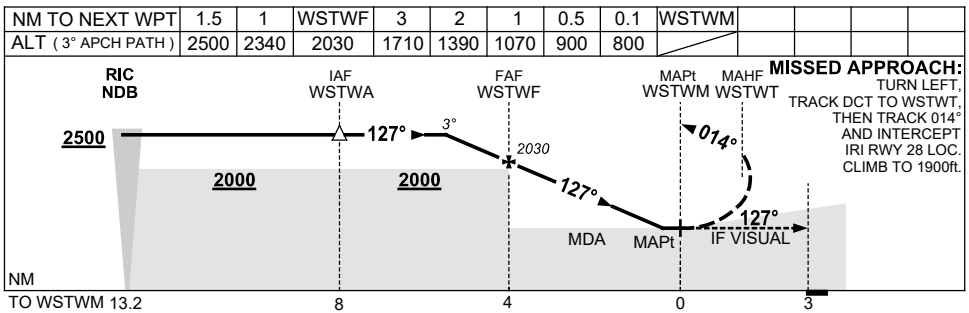
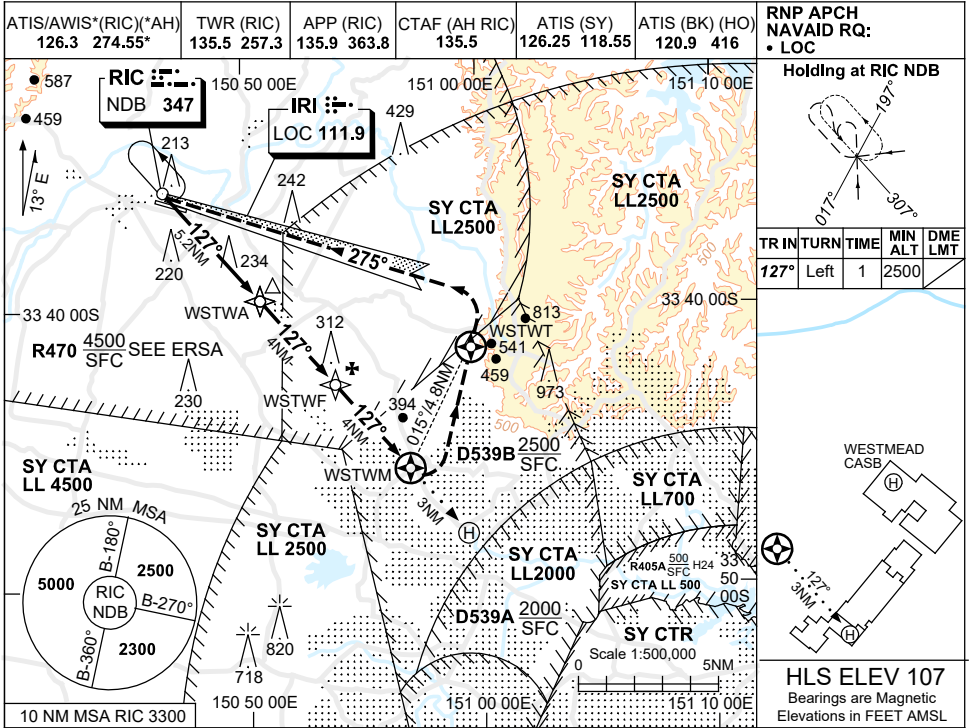
FOR CASA APPROVED OPERATORS ONLY

USE QNH

RNP 127

21 MAR 2024

WESTMEAD HOSPITAL, NSW (YWST)



NOTES

CATEGORY	H
LNAV (NON VAA) USING AREA QNH	900 (793-4.6)
LNAV (NON VAA) USING SY, RIC OR BK QNH	800 (693-4.0)
ALTERNATE	NOT APPLICABLE

1. COLOUR: SEE SPEC NOTICES.

Changes: R405A ADDED, Editorial.

WSTGN01-178

FOR CASA APPROVED OPERATORS ONLY

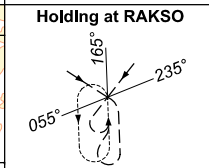
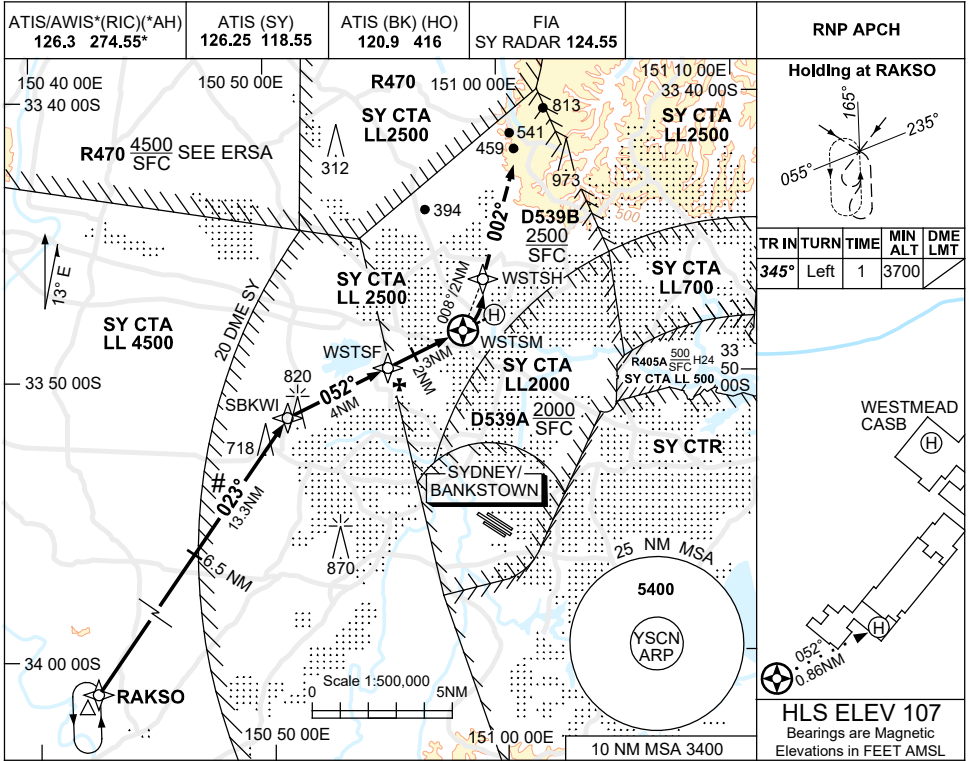
FOR CASA APPROVED OPERATORS ONLY

USE QNH

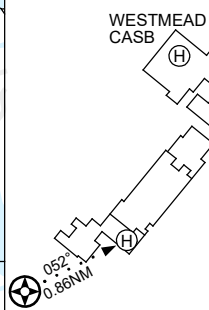
RNP 052

21 MAR 2024

WESTMEAD HOSPITAL, NSW (YWST)

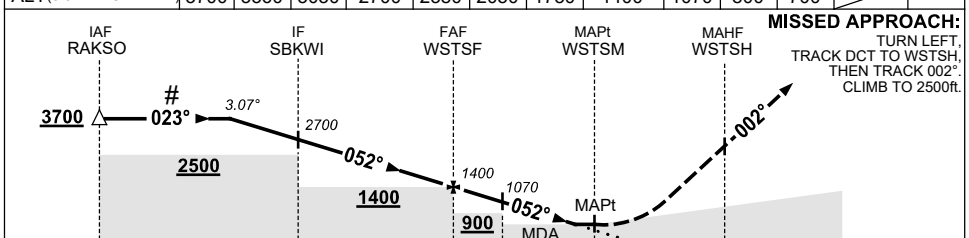


TR IN	TURN	TIME	MIN ALT	DME LMT
345°	Left	1	3700	



HLS ELEV 107
Bearings are Magnetic
Elevations in FEET AMSL

NM TO NEXT WPT	3.1	2	1	SBKWI	3	2	1	WSTS F	2	1.2	0.9	WSTS M
ALT (3.07° APCH PATH)	3700	3360	3030	2700	2380	2050	1730	1400	1070	800	700	



NM TO WSTS M	20.3	7	3	2	0	0.86	2

NOTES

CATEGORY	H
LNAV (VAA) USING AREA QNH	800 (693-3.9)
LNAV (VAA) USING SY, RIC OR BK QNH	700 (593-3.4)
ALTERNATE	NOT APPLICABLE

- #1. INITIAL SEGMENT CO-INCIDENT WITH INITIAL SEGMENT FOR YSBK RNP RWY 11C PROC.
- 2. COLOUR: SEE SPEC NOTICES.
- 3. APCH CLR RQ FM SY ATS. ALL ACFT TRACK VIA RAKSO UNLESS ADVISED BY ATC.

Changes: R405A ADDED, Editorial.

WSTGN02-178

FOR CASA APPROVED OPERATORS ONLY