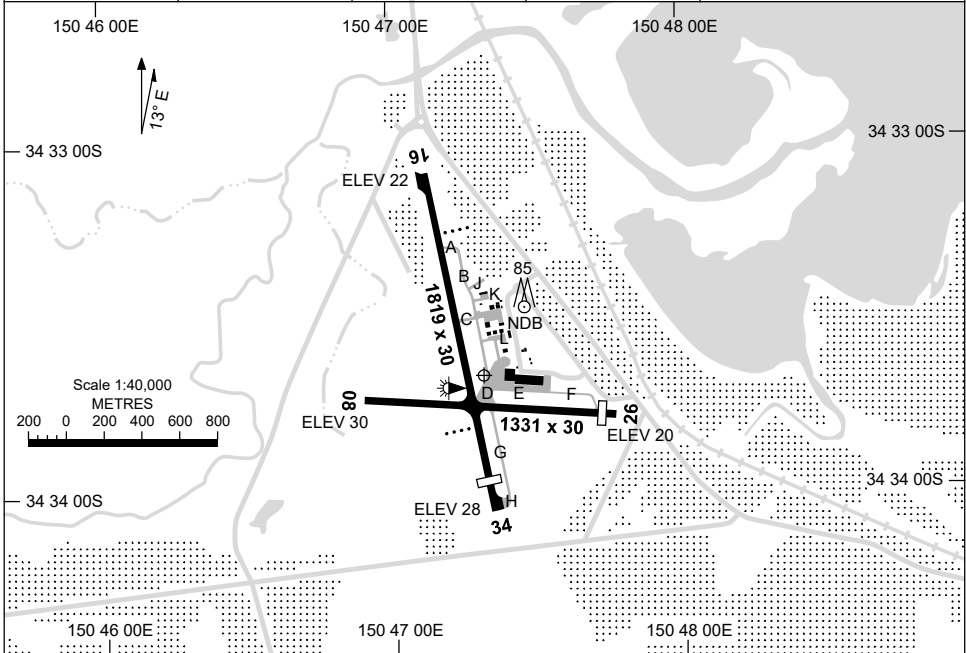


7 SEP 2023

AD ELEV 31
34 33 40S 150 47 19E

AERODROME CHART
SHELLHARBOUR AIRPORT, NSW (YSHL)

AWIS 120.35	FIA SY CEN 124.55	CTAF+AFRU 127.3	AFRU+PAL 127.3	Bearings are Magnetic Elevations in FEET AMSL
-----------------------	-----------------------------	---------------------------	--------------------------	--



RWY		AERODROME LIGHTING
		TAXIWAY : BLUE EDGE TWY D, H AND G RL : AFRU+PAL 127.3, SDBY (28 SEC)
16 ¹⁵⁷		PAPI 3.7° 69FT LIRL
³³⁷ 34		PAPI 3.4° 53FT LIRL
08 ⁰⁸²		LIRL
²⁶¹ 26		LIRL

NOTES

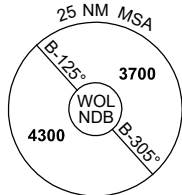
1. AWIS 120.35 ACTIVATED BY 1 SEC TRANSMISSION.
2. SY CEN FIA 124.55 AVBL IN CIRCUIT AREA.
3. NIGHT OPS FOR SCHEDULED AND NON-SCHEDULED ACFT
ABV 5700KG MTOW MUST BE FLOWN FROM A RWY ALIGNED
RNP APCH UNLESS APPROVED BY CASA.

Changes: RWY 08/26 LIRL, TWY LIGHTING, Editorial.

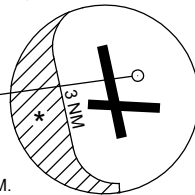
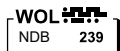
SHLAD01-176

7 NOV 2019

AWIS 120.35	FIA SY CEN 124.55	CTAF+AFRU 127.3	AFRU+PAL 127.3		Bearings are Magnetic Elevations in FEET AMSL
----------------	----------------------	--------------------	-------------------	--	--



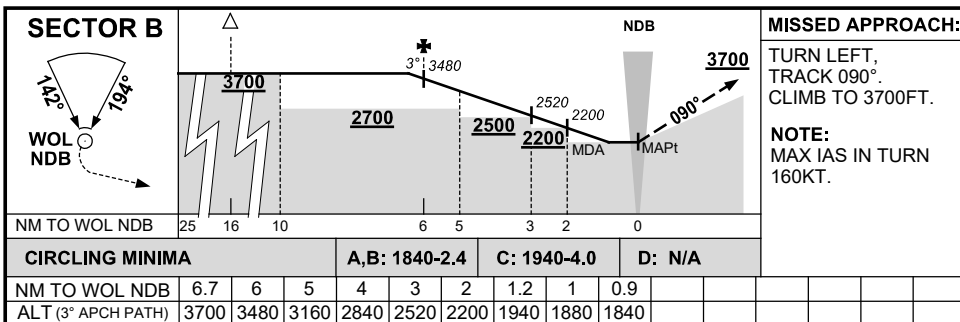
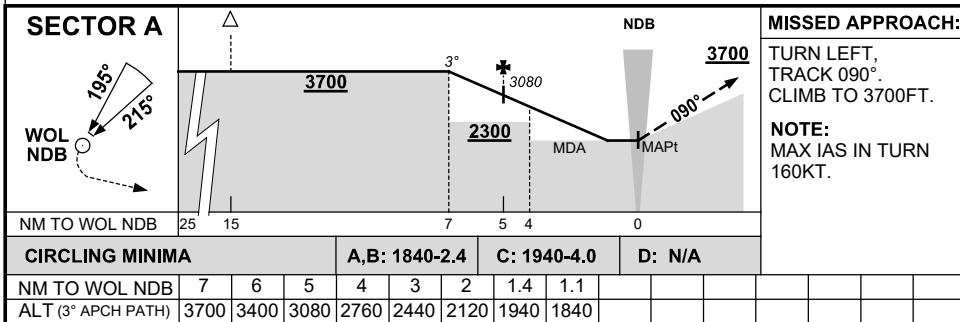
REFERENCE WAYPOINT WOL NDB



* NO CIRCLING WEST OF RWAY 16/34 BEYOND 3NM.

10 NM MSA 4300

AD ELEV 31

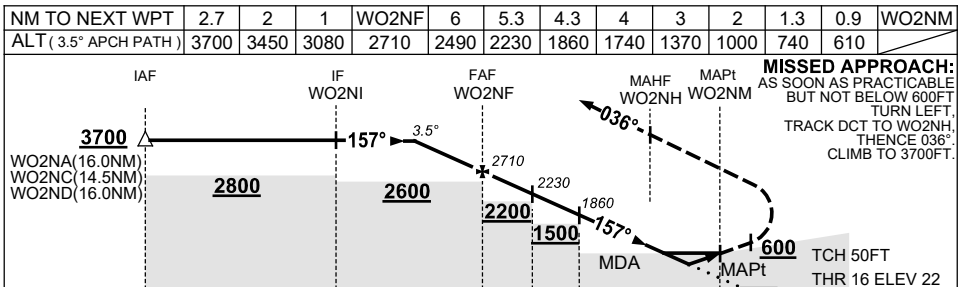
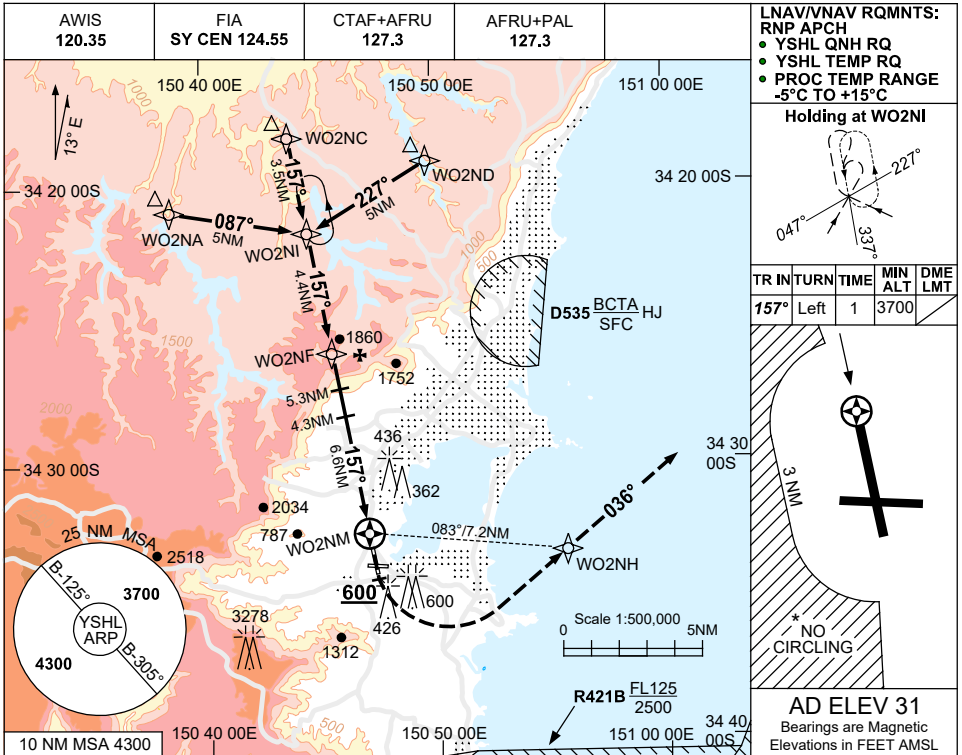


USE QNH

RNP RWY 16

8 SEP 2022

SHELLHARBOUR AIRPORT, NSW (YSHL)



CATEGORY	A	B	C	D
LNAV/VNAV	610 (588-2.9)			NOT APPLICABLE
LNAV	740 (718-3.5)			
CIRCLING *	1840 (1809-2.4)		1940 (1909-4.0)	
ALTERNATE	(2309-4.4)		(2409-6.0)	

NOTES

- MAX IAS: 230KT.
 INITIAL HOLDING: 210KT.
 MAP TURN: 190KT.
- NO CIRCLING WEST OF RWY 16/34 BEYOND 3NM.
- APCH PATH ANGLE DOES NOT COINCIDE WITH PAPI ON GLIDE SLOPE INDICATION.
- COLOUR: SEE SPEC NOTICES.

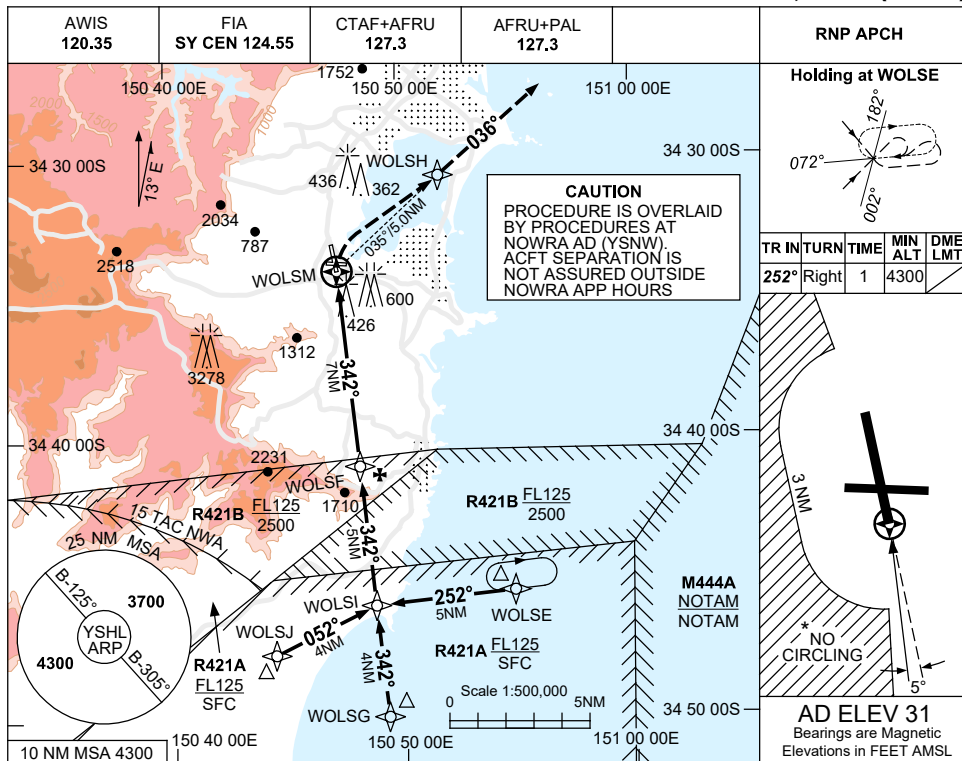
Changes: Editorial.

SHLGN01-172

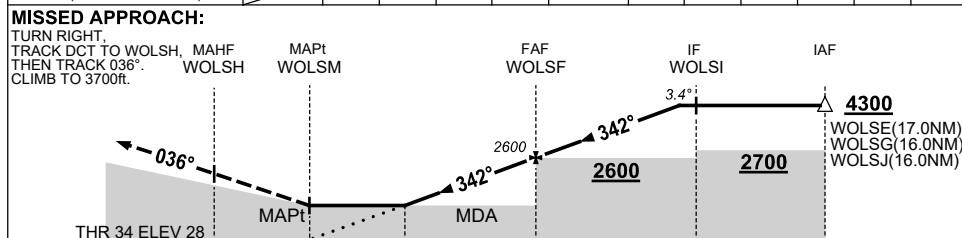
USE QNH
SHELLHARBOUR AIRPORT, NSW (YSHL)

RNP RWY 34

30 NOV 2023



NM TO NEXT WPT	WOLSM	3.5	4	5	6	WOLSF	1	2	3	4	4.7	
ALT (3.4° APCH PATH)		1340	1520	1880	2240	2600	2960	3320	3680	4040	4300	



NOTES

1. ATC CLR RQ THRU R421. (NOWRA APP 123.5)
2. MAX IAS: INITIAL : 200KT. MAP TURN: 190KT.
- *3. NO CIRCLING WEST OF RWY 16/34 BEYOND 3NM.
4. **COLOUR:** SEE SPEC NOTICES.

CATEGORY	A	B	C	D
LNAV	1340 (1309-5.0)			NOT APPLICABLE
CIRCLING *	1840 (1809-2.4)		1940 (1909-4.0)	
ALTERNATE	(2309-4.4)		(2409-6.0)	

Changes: M444A REPLACES R495A, Editorial.

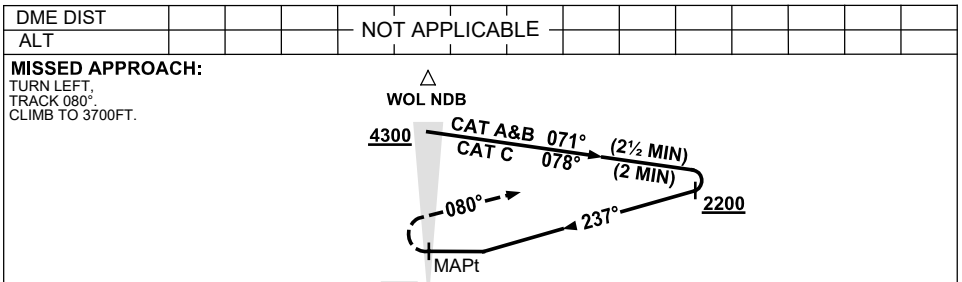
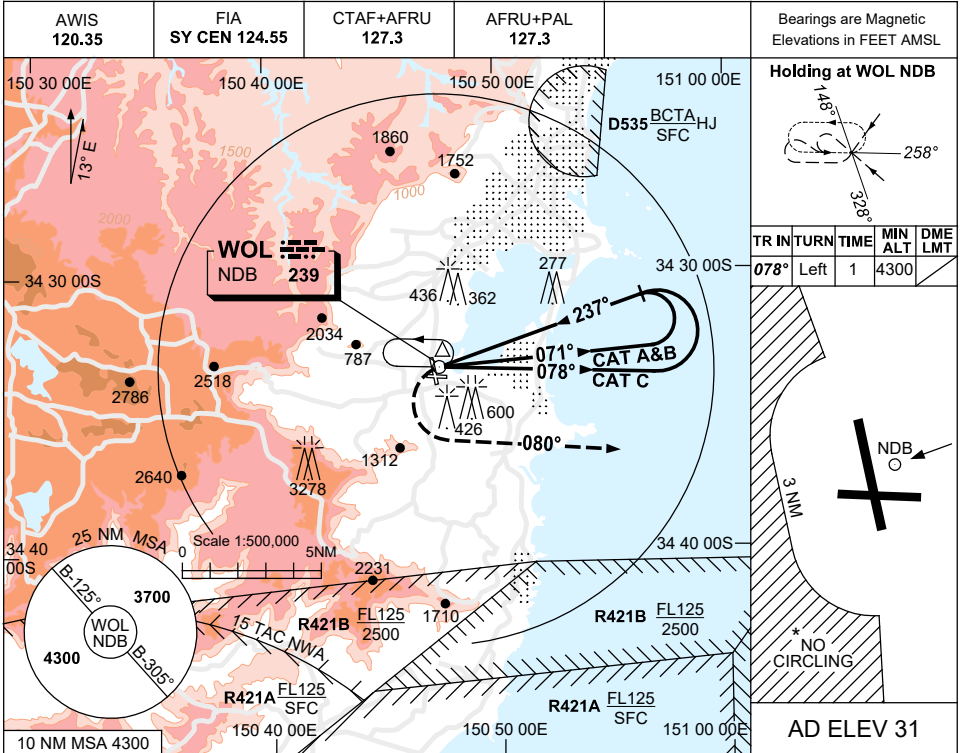
SHLGN02-177

USE QNH

NDB-A

SHELLHARBOUR AIRPORT, NSW (YSHL)

8 SEP 2022



NOTES

1. MAX IAS :
HOLDING: 180KT.
INITIAL :
CAT A&B : 140KT.
CAT C : 180KT.
MAP TURN: 180KT.
- *2. NO CIRCLING WEST OF RWY 16/34 BEYOND 3NM.
3. COLOUR: SEE SPEC NOTICES.

CATEGORY	A	B	C	D
				NOT APPLICABLE
CIRCLING*	1840 (1809-2.4)		1940 (1909-4.0)	
ALTERNATE	(2309-4.4)		(2409-6.0)	

Changes: Editorial.

SHLN01-172