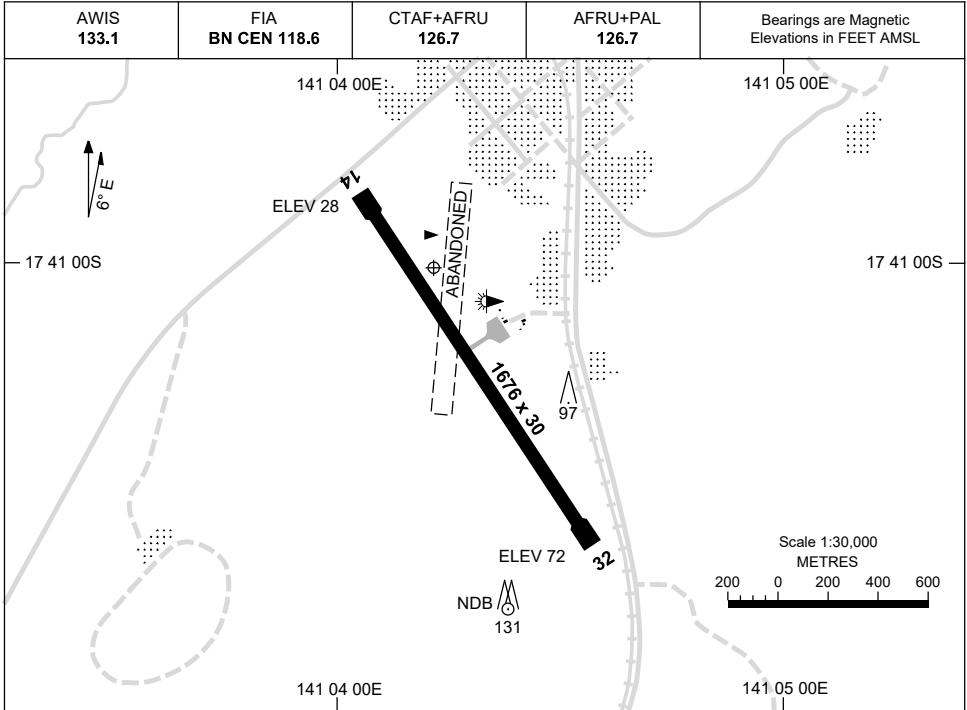


17 JUN 2021

AD ELEV 73
17 41 06S 141 04 13E

AERODROME CHART
NORMANTON, QLD (YNTN)



	AERODROME LIGHTING
RWY	TAXIWAY : BLUE EDGE RL : AFRU+PAL 126.7 , SDBY (15 SEC)
14 ¹⁴¹ ³²¹ 32	LIRL LIRL

NOTES

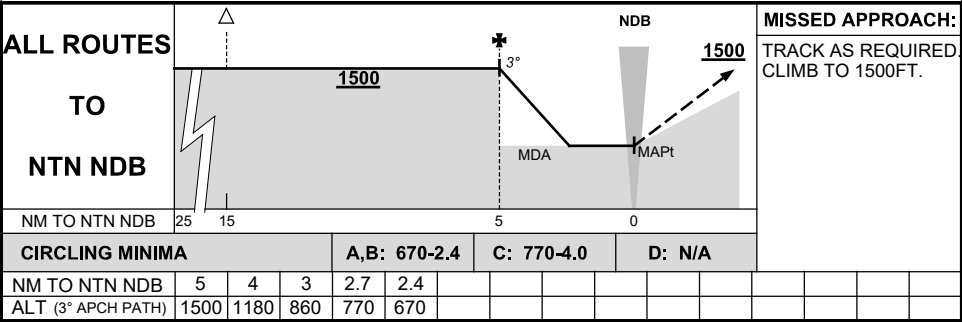
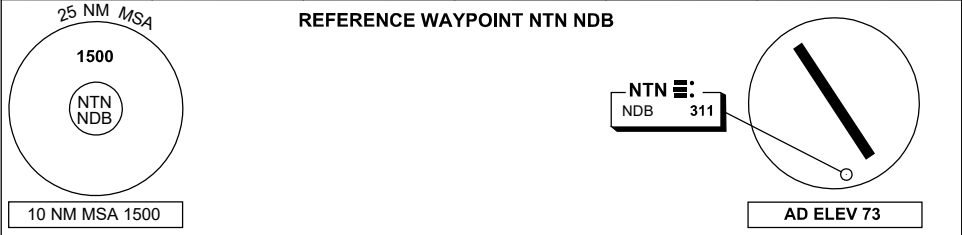
Changes: COORD FMT.

NTNAD01-167

**GNSS ARRIVAL PROCEDURES
NORMANTON, QLD (YNTN)**

17 JUN 2021

AWIS 133.1	FIA BN CEN 118.6	CTAF+AFRU 126.7	AFRU+PAL 126.7		Bearings are Magnetic Elevations in FEET AMSL
---------------	---------------------	--------------------	-------------------	--	--------------------------------------------------

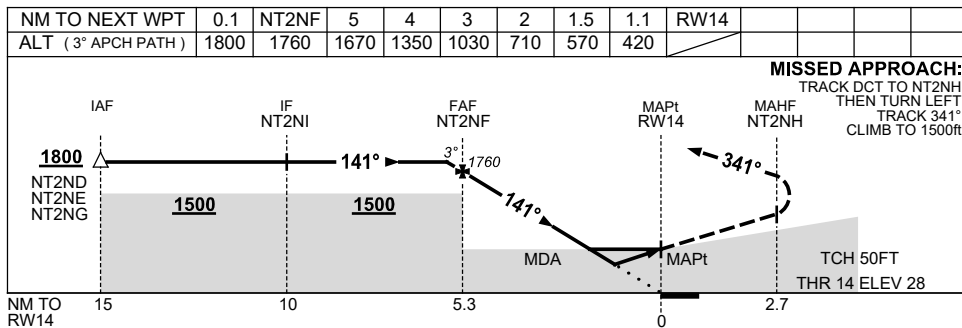
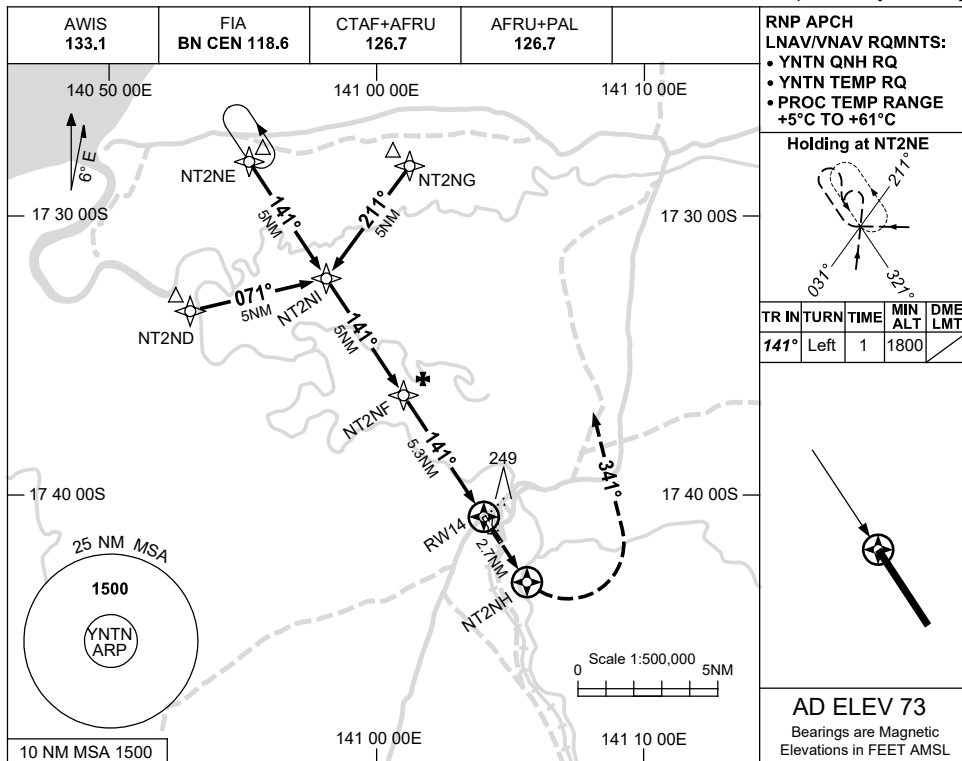


USE QNH

RNP RWY 14

NORMANTON, QLD (YNTN)

21 MAR 2024



NOTES

CATEGORY	A	B	C	D
LNAV/VNAV	420 (392-2.2)			NOT APPLICABLE
LNAV	570 (542-3.1)			
CIRCLING	670 (597-2.4)		770 (697-4.0)	
ALTERNATE	(1097-4.4)		(1197-6.0)	

1. MAX IAS:
INITIAL : 210KT.

Changes: LNAV/VNAV, LNAV MINIMA, WPT NAMING CONVENTION, MAPt, Editorial.

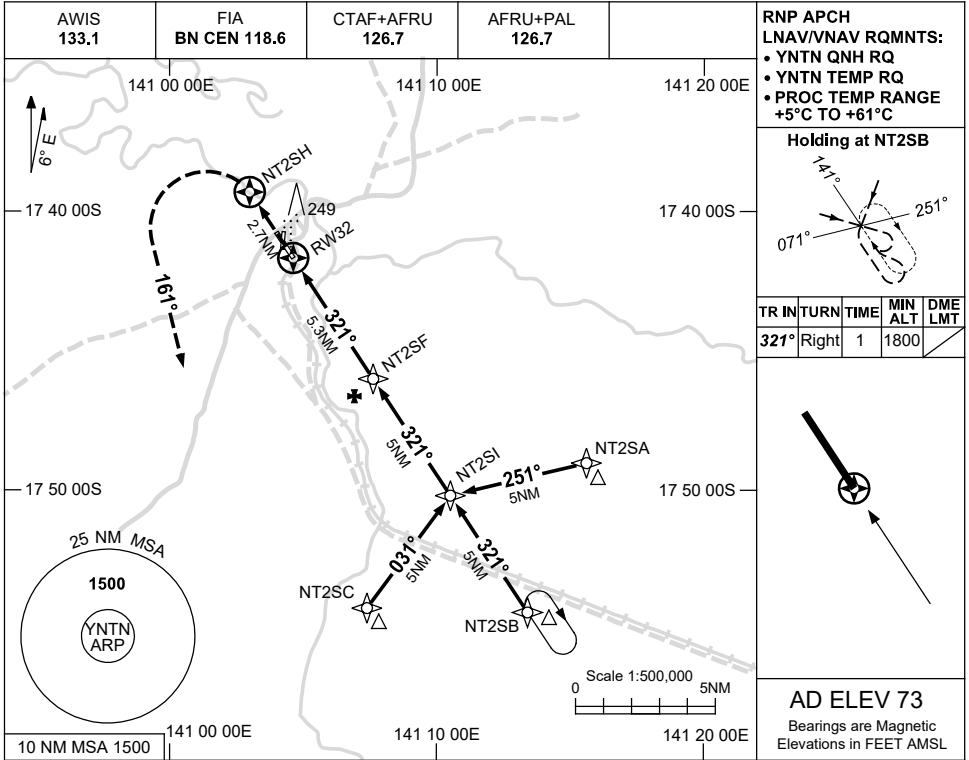
NTNGN01-178

USE QNH

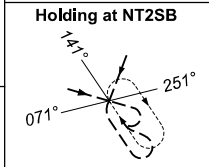
RNP RWY 32

NORMANTON, QLD (YNTN)

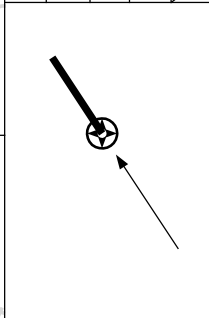
21 MAR 2024



RNP APCH
LNAV/VNAV RQMNTS:
 • YNTN QNH RQ
 • YNTN TEMP RQ
 • PROC TEMP RANGE
 +5°C TO +61°C

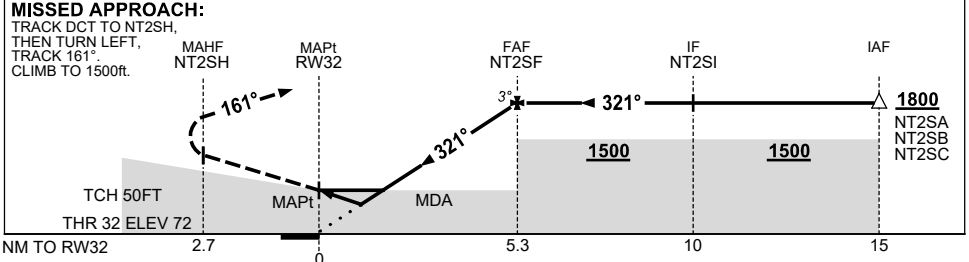


TR	IN	TURN	TIME	MIN ALT	DME LMT
321°	Right	1	1800		



AD ELEV 73
 Bearings are Magnetic
 Elevations in FEET AMSL

NM TO NEXT WPT	RW32	0.9	1.5	2	3	4	5	NT2SF				
ALT (3° APCH PATH)		420	610	760	1080	1400	1710	1800				



NOTES

CATEGORY	A	B	C	D
LNAV/VNAV	420 (348-1.9)			NOT APPLICABLE
LNAV	610 (537-2.9)			
CIRCLING	670 (597-2.4)		770 (697-4.0)	
ALTERNATE	(1097-4.4)		(1197-6.0)	

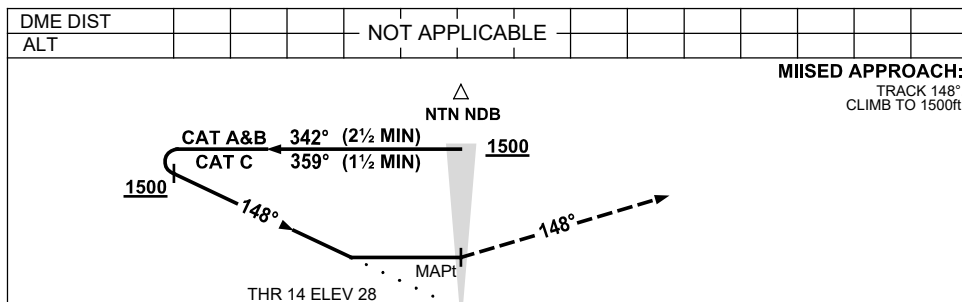
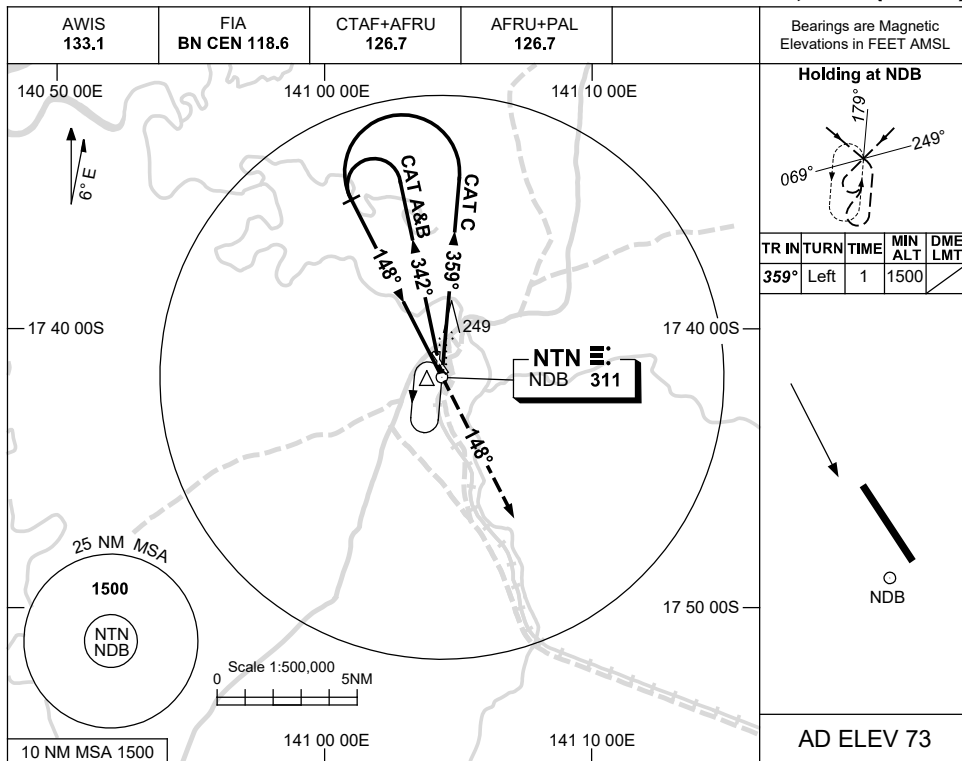
1. MAX IAS:
 INITIAL : 210KT.

Changes: LNAV/VNAV, WPT NAMING CONVENTION, MAPt, Editorial. NTNGN02-178

USE QNH

NDB RWY 14
NORMANTON, QLD (YNTN)

21 MAR 2024



NOTES

CATEGORY	A	B	C	D
S-I NDB	660 (632-3.6)			NOT APPLICABLE
CIRCLING	670 (597-2.4)	770 (697-4.0)		
ALTERNATE	(1097-4.4)		(1197-6.0)	

1. MAX IAS:
 INITIAL :
 CAT C 210KT.

Changes: OUTBOUND TRK, NOTE 1, HOLDING, Editorial.

NTNNB01-178