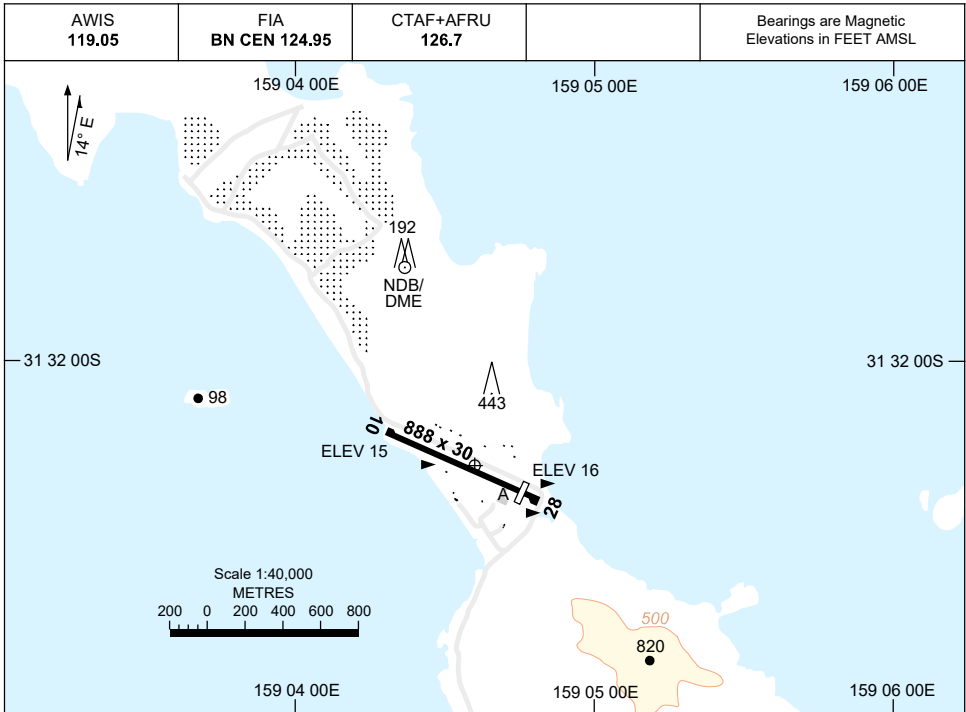


7 SEP 2023

AD ELEV 17  
31 32 18S 159 04 38E

AERODROME CHART  
**LORD HOWE ISLAND, NSW (YLHI)**



<b>RWY</b>	<b>AERODROME LIGHTING</b>
	RL : PTBL IN EMERG ONLY , 1 HR PN RQ
<b>10</b> <small>100</small>	PTBL
<small>280</small> <b>28</b>	PTBL

**NOTES**

1. COLOUR: SEE SPEC NOTICES.
2. AWIS ACTIVATED BY 1 SEC TRANSMISSION.
3. PARKING BAY CO-ORDINATES:
 

BAY 1	31 32 25.12S 159 04 42.01E
BAY 2	31 32 25.47S 159 04 43.04E

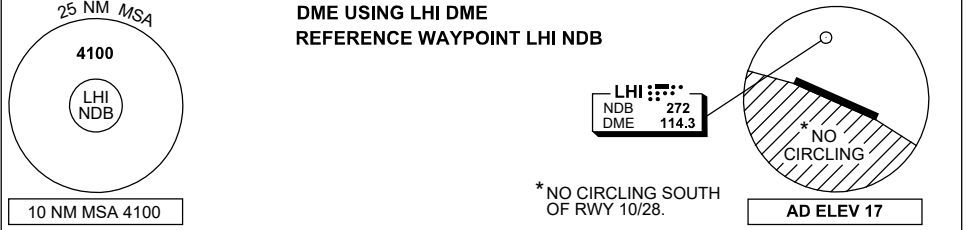
Changes: NOTES.

LHIAD01-176

# DME or GNSS ARRIVAL PROCEDURES LORD HOWE ISLAND, NSW (YLHI) Page 1

16 JUN 2022

AWIS 119.05	FIA BN CEN 124.95	CTAF+AFRU 126.7			Bearings are Magnetic Elevations in FEET AMSL
----------------	----------------------	--------------------	--	--	--



**SECTOR A**

**MISSED APPROACH:**  
TURN LEFT,  
TRACK 290°.  
CLIMB TO 4100FT.

NM TO LHI NDB	25	15													
<b>CIRCLING MINIMA</b>	A,B: 1340-2.4			C: 1440-4.0			D: N/A								
NM TO LHI NDB	11.2	11	10	9	8	7	6	5	4	2.8	2.5				
ALT (3° APCH PATH)	4100	4030	3710	3400	3080	2760	2440	2120	1800	1440	1340				

**SECTOR B**

**MISSED APPROACH:**  
TURN RIGHT,  
TRACK 290°.  
CLIMB TO 4100FT.

NM TO LHI NDB	25	15													
<b>CIRCLING MINIMA</b>	A,B: 1340-2.4			C: 1440-4.0			D: N/A								
NM TO LHI NDB	11.2	11	10	9	8	7	6	5	4	2.8	2.5				
ALT (3° APCH PATH)	4100	4030	3710	3400	3080	2760	2440	2120	1800	1440	1340				

**CHEWY TO LHI**

**MISSED APPROACH:**  
AT 2.3 DME TURN LEFT,  
TRACK 290°.  
CLIMB TO 4100FT.

NM TO LHI NDB	25	15													
<b>CIRCLING MINIMA</b>	A,B: 1340-2.4			C: 1440-4.0			D: N/A								
NM TO LHI NDB	11.2	11	10	9	8	7	6	5	4	2.8	2.5				
ALT (3° APCH PATH)	4100	4030	3710	3400	3080	2760	2440	2120	1800	1440	1340				

Changes: CIRCLING MINIMA, DIST/ALT TABLE.

LHIDG01-171

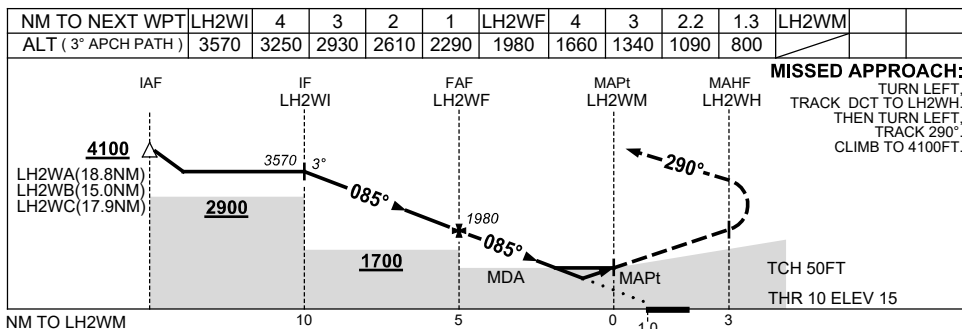
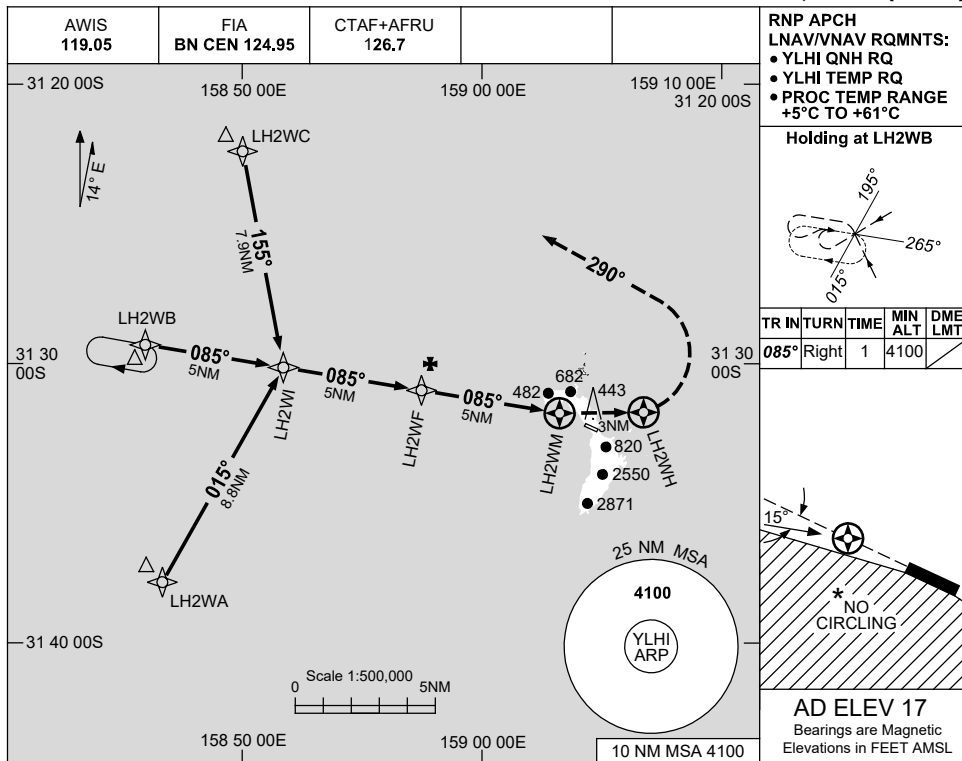


USE QNH

RNP RWY 10

16 JUN 2022

LORD HOWE ISLAND, NSW (YLHI)



CATEGORY	A	B	C	D	
LNAV/VNAV	800 (785-4.5)			NOT APPLICABLE	
LNAV	1090 (1073-5.0)				
CIRCLING *	1340 (1323-2.4)		1440 (1423-4.0)		
ALTERNATE	(1823-4.4)		(1923-6.0)		

- NOTES**
- MAX IAS: INITIAL : 210KT.
  - \* 2. NO CIRCLING STH OF RWY 10/28.

Changes: MINIMA, WPT NAMING CONVENTION, Editorial.

LHIGN01-171

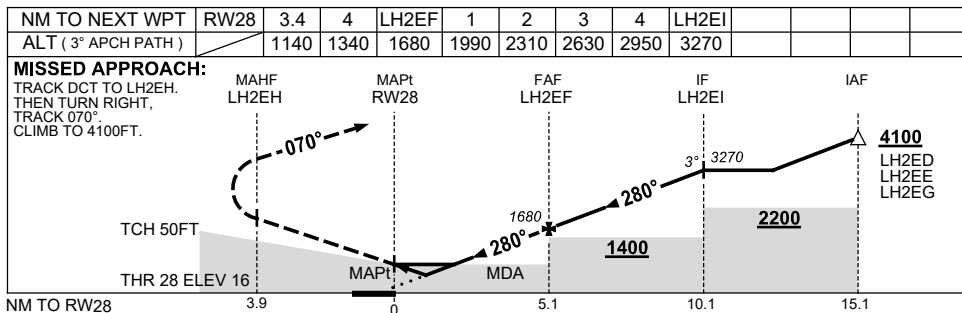
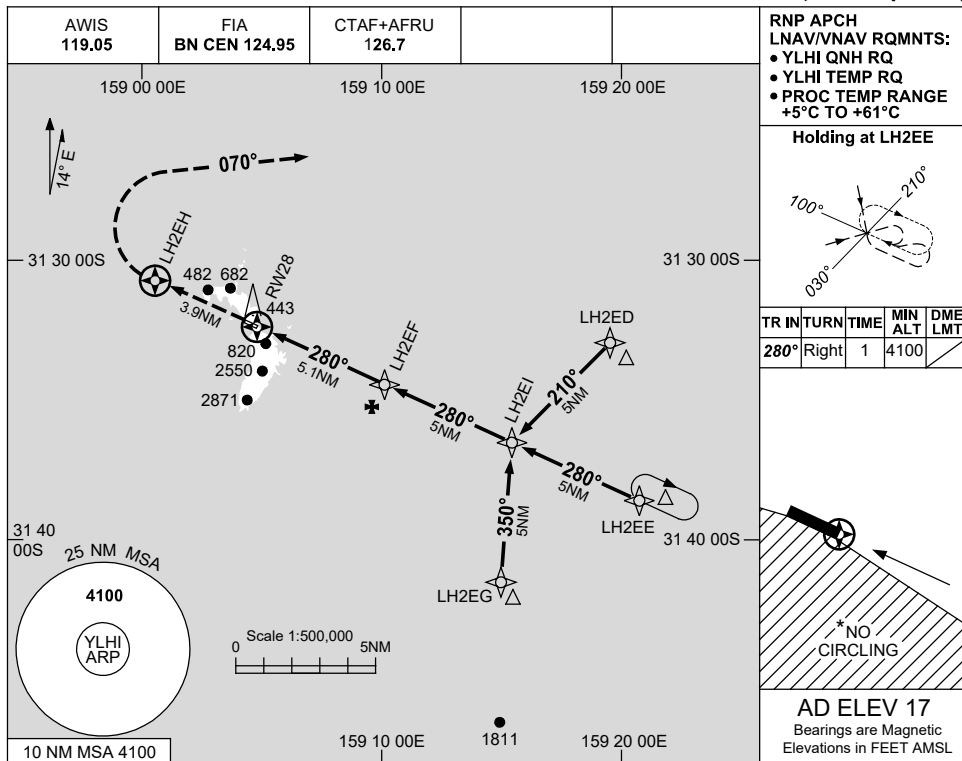


USE QNH

RNP RWY 28

16 JUN 2022

LORD HOWE ISLAND, NSW (YLHI)



**NOTES**

CATEGORY	A	B	C	D
LNAV/VNAV		1140 (1124-5.0)		<b>NOT APPLICABLE</b>
LNAV		1340 (1323-5.0)		
CIRCLING *	1340 (1323-2.4)		1440 (1423-4.0)	
ALTERNATE	(1823-4.4)		(1923-6.0)	

1. MAX IAS: INITIAL : 210KT.
- \* 2. NO CIRCLING S OF RWY 10/28.

Changes: MINIMA, DIST/ALT TABLE, WPT NAMING CONVENTION, Editorial.

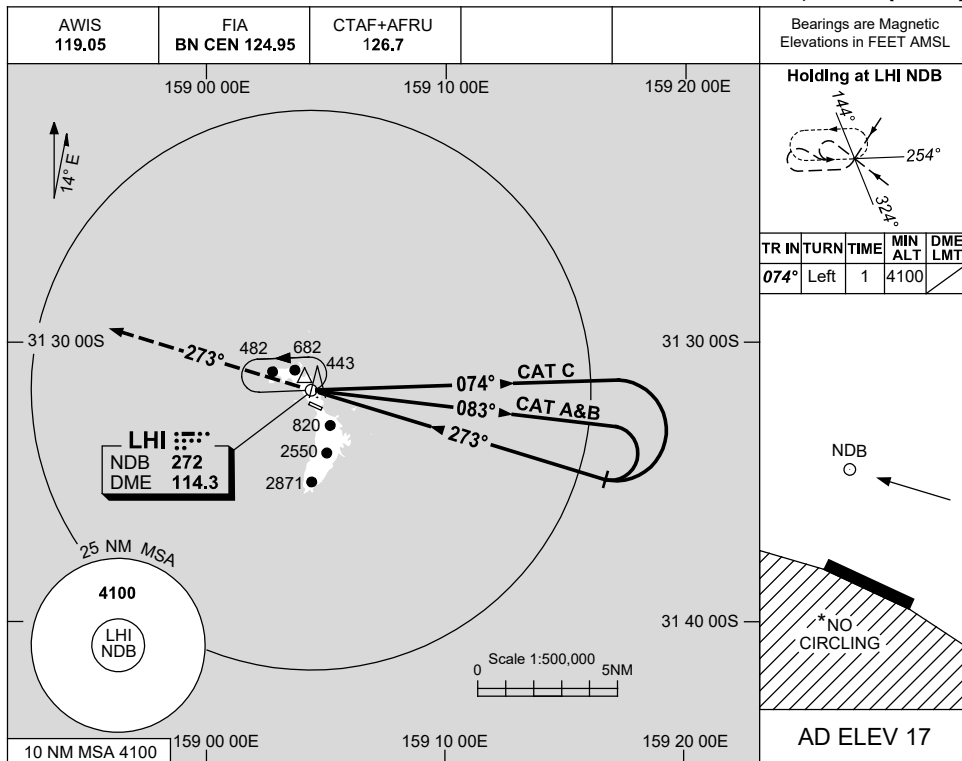
LHIGN03-171

USE QNH

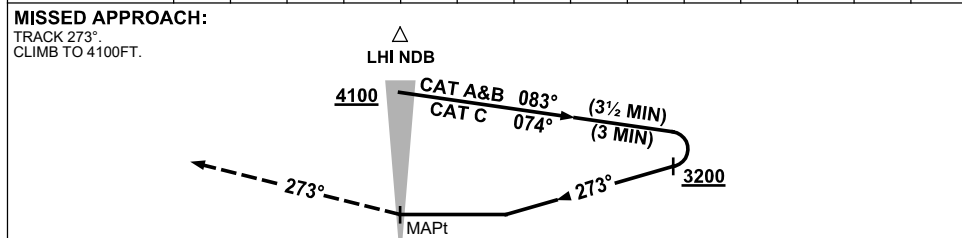
NDB-A

**LORD HOWE ISLAND, NSW (YLHI)**

16 JUN 2022



DME DIST	NOT APPLICABLE									
ALT										



**NOTES**

CATEGORY	A	B	C	D
				NOT APPLICABLE
CIRCLING *	1340 (1323-2.4)		1440 (1423-4.0)	
ALTERNATE	(1823-4.4)		(1923-6.0)	

\* 1. NO CIRCLING S OF RWY 10/28.

Changes: MINIMA, Editorial.

LHINB01-171