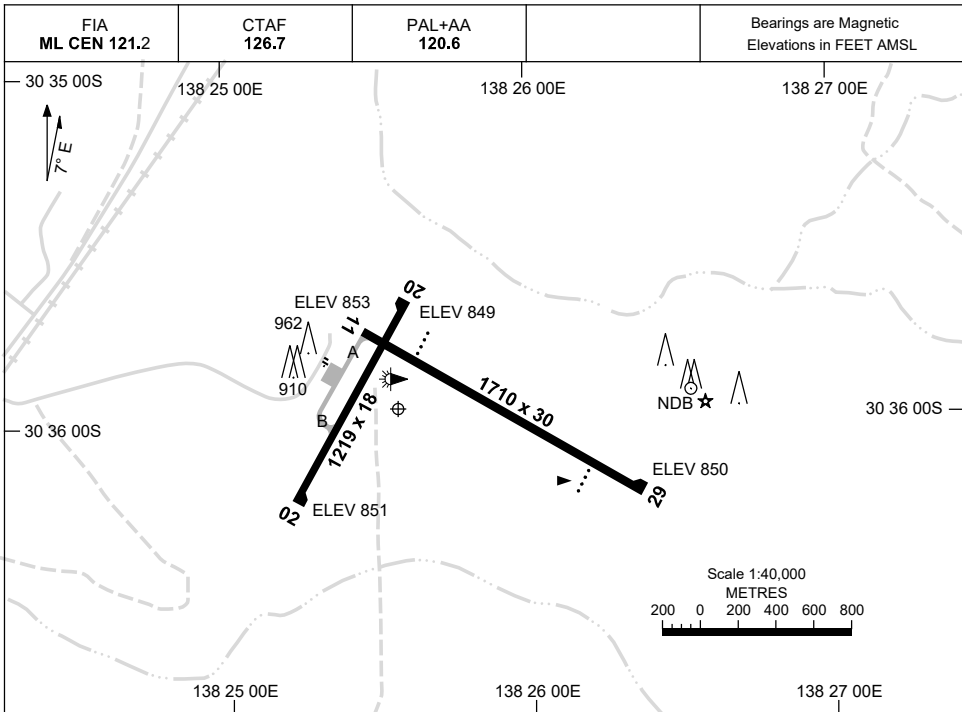


8 SEP 2022

AD ELEV 856  
30 35 54S 138 25 33E

**AERODROME CHART**  
**LEIGH CREEK, SA (YLEC)**



<b>AERODROME LIGHTING</b>	
<b>RWY</b>	ABN : FLG W 6 SEC TAXIWAY : BLUE EDGE TWY A RL : PAL+AA 120.6 , SDBY
<b>11</b> <small>114</small>	PAPI 3.0° 42FT LIRL
<small>294</small> <b>29</b>	PAPI 3.0° 42FT LIRL
<b>02</b> <small>023</small>	NIL
<small>203</small> <b>20</b>	NIL

**NOTES**

1. AWIS (PHONE) 08 8150 3807

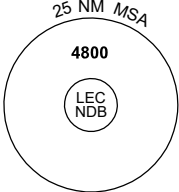
Changes: PTBL LIGHTING REMOVED, NOTES.

LECAD01-172

# GNSS ARRIVAL PROCEDURES LEIGH CREEK, SA (YLEC)

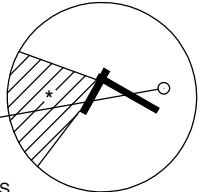
16 JUN 2022

FIA ML CEN 121.2	CTAF 126.7	PAL+AA 120.6	Bearings are Magnetic Elevations in FEET AMSL
---------------------	---------------	-----------------	--



25 NM MSA  
4800  
LEC NDB

**REFERENCE WAYPOINT LEC NDB**  
AWIS (PHONE) 08 8150 3807



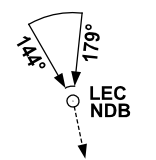
LEC NDB  
NDB 287

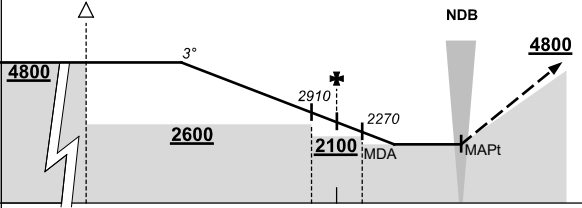
10 NM MSA 3500

\* NO CIRCLING IN SECTOR SW OF RWYS 02/20 AND 11/29.

AD ELEV 856

**SECTOR A**

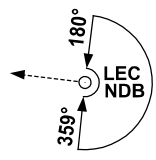


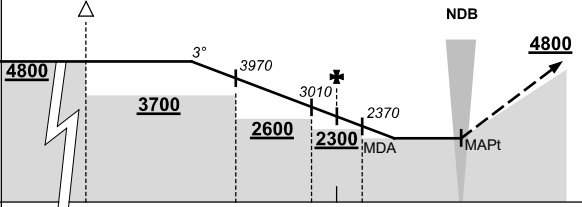


**MISSED APPROACH:**  
CLIMB ON TRACK TO 4800FT.

NM TO LEC NDB	25	15	6	5	4	0									
<b>CIRCLING MINIMA</b>	A,B: 1770-2.4		C: 1930-4.0		D: N/A										
NM TO LEC NDB	12	11	10	9	8	7	6	5	4	3	2.4				
ALT (3° APCH PATH)	4800	4500	4180	3860	3540	3220	2910	2590	2270	1950	1770				

**SECTOR B**

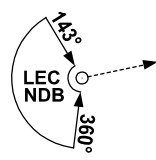


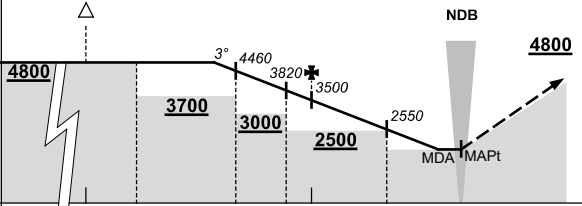


**MISSED APPROACH:**  
CLIMB ON TRACK TO 4800FT.

NM TO LEC NDB	25	15	9	6	5	4	0								
<b>CIRCLING MINIMA</b>	A,B: 1830-2.4		C: 1930-4.0		D: N/A										
NM TO LEC NDB	11.6	11	10	9	8	7	6	5	4	3	2.3				
ALT (3° APCH PATH)	4800	4600	4280	3970	3650	3330	3010	2690	2370	2050	1830				

**SECTOR C**





**MISSED APPROACH:**  
CLIMB ON TRACK TO 4800FT.

NM TO LEC NDB	25	15	13	9	7	6	3	0						
<b>CIRCLING MINIMA</b>	A,B: 1960-2.4		C: 1960-4.0		D: N/A									
NM TO LEC NDB	10.1	10	9	8	7	6	5	4	3	1.2				
ALT (3° APCH PATH)	4800	4780	4460	4140	3820	3500	3190	2870	2550	1960				

Changes: PAL+AA

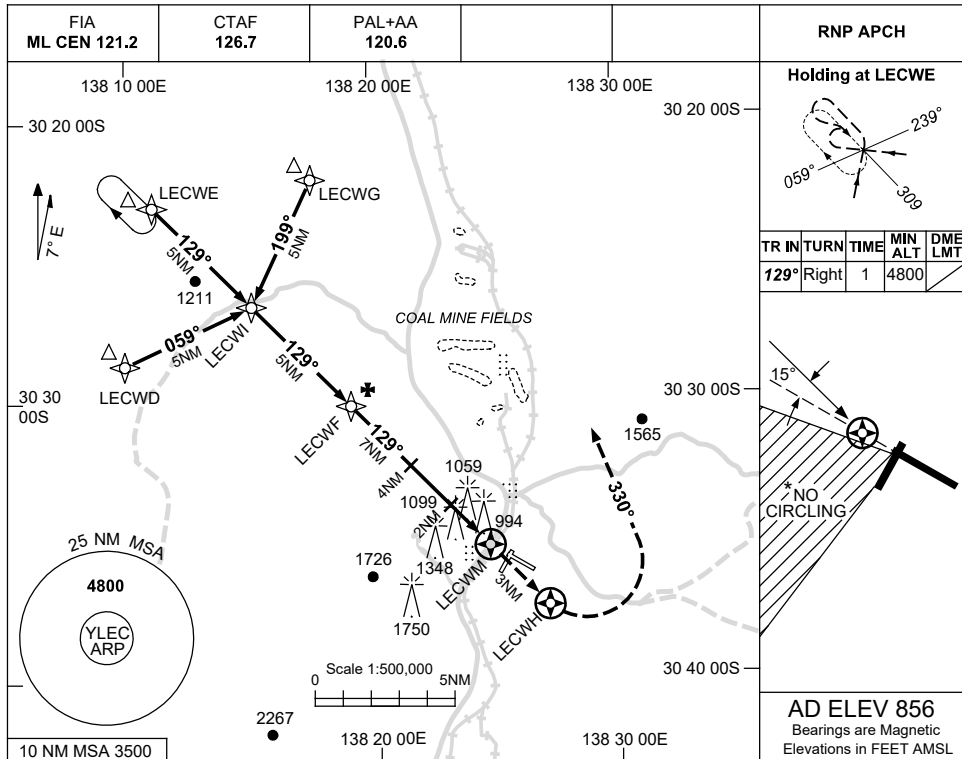
LECDG01-171

USE QNH

RNP RWY 11

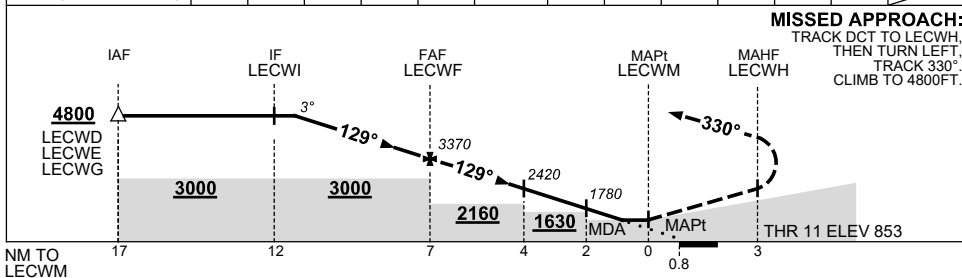
LEIGH CREEK, SA (YLEC)

1 DEC 2022



**AD ELEV 856**  
Bearings are Magnetic  
Elevations in FEET AMSL

NM TO NEXT WPT	4.5	4	3	2	1	LECWF	6	5	4	3	2	1.4	LECWM
ALT (3° APCH PATH)	4800	4640	4330	4010	3690	3370	3050	2740	2420	2100	1780	1580	



**MISSED APPROACH:**  
TRACK DCT TO LECWH,  
THEN TURN LEFT,  
TRACK 330°,  
CLIMB TO 4800FT.

THR 11 ELEV 853

CATEGORY	A	B	C	D
LNAV	1580 (724-4.1)			NOT APPLICABLE
CIRCLING *	1760 (904-2.4)		1930 (1074-4.0)	
ALTERNATE	(1404-4.4)		(1574-6.0)	

- MAX IAS: INITIAL : 210KT.
- NO CIRCLING IN SECTOR SW OF RWYS 02/20 AND 11/29.
- AWIS (PHONE) 08 8150 3807

Changes: CHART TITLE, PBN SPECIFICATION BOX.

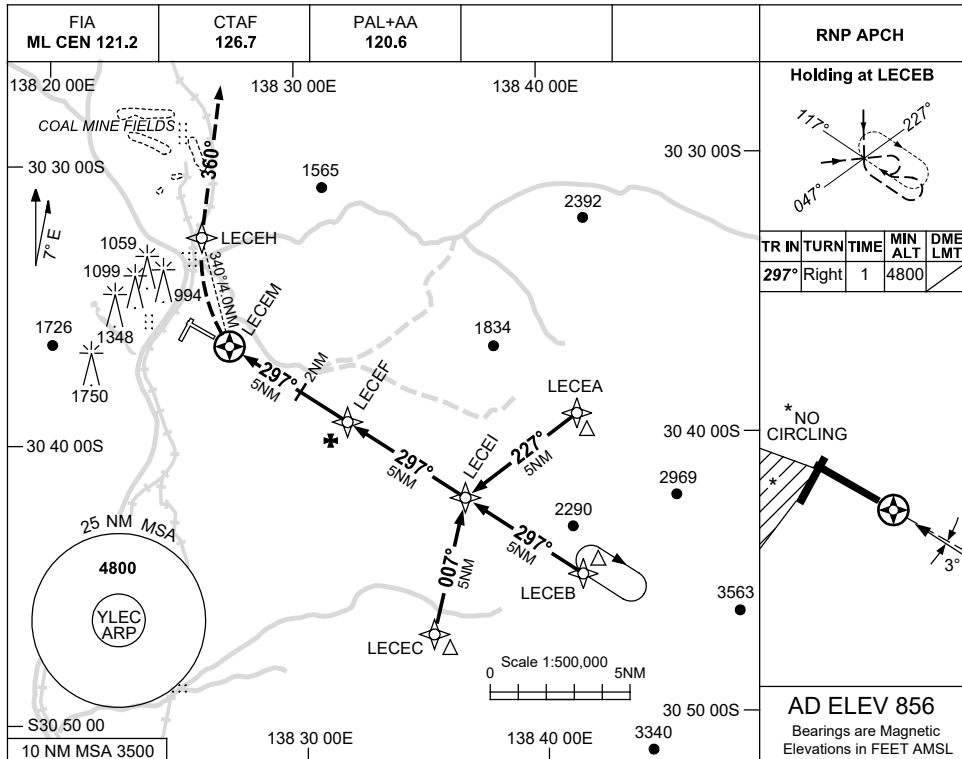
LECGN01-173

USE QNH

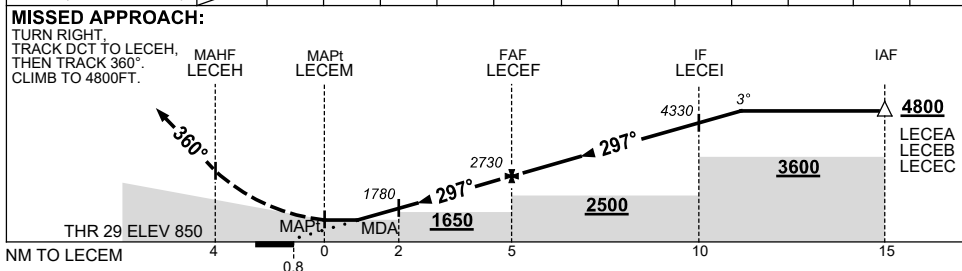
RNP RWY 29

LEIGH CREEK, SA (YLEC)

1 DEC 2022



NM TO NEXT WPT	LECEM	1.3	2	3	4	LECEI	1	2	3	4	LECEI	1	1.5
ALT (3° APCH PATH)		1560	1780	2100	2410	2730	3050	3370	3690	4010	4330	4640	4800



**NOTES**

CATEGORY	A	B	C	D
LNAV	1560 (704-4.0)			NOT APPLICABLE
CIRCLING *	1760 (904-2.4)		1930 (1074-4.0)	
ALTERNATE	(1404-4.4)		(1574-6.0)	

- MAX IAS: INITIAL : 210KT.
- NO CIRCLING IN SECTOR SW OF RWYS 02/20 AND 11/29.
- AWIS (PHONE) 08 8150 3807

Changes: CHART TITLE, PBN SPECIFICATION BOX.

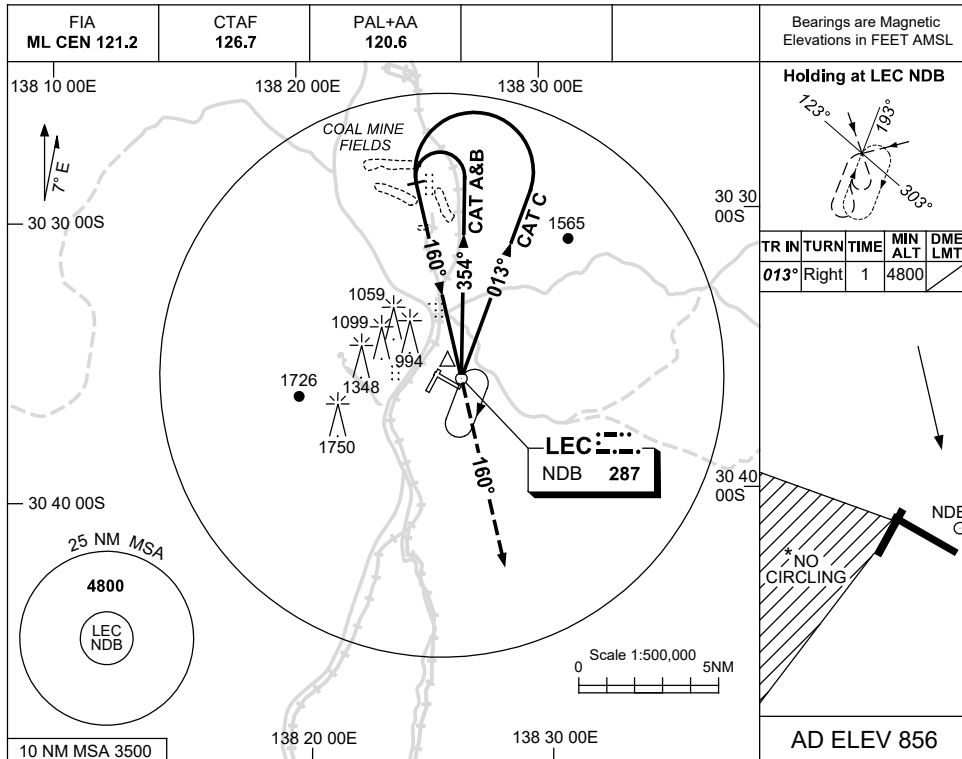
LECGN02-173

USE QNH

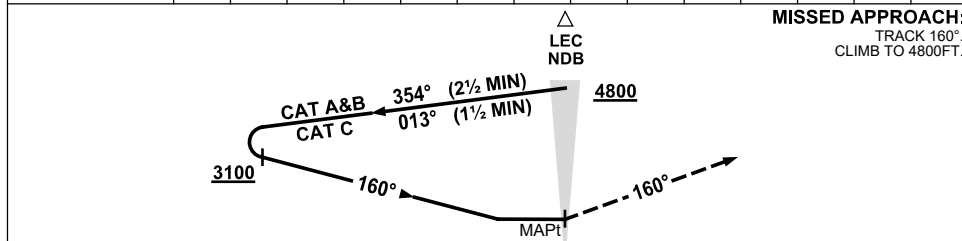
NDB-A

16 JUN 2022

LEIGH CREEK, SA (YLEC)



DME DIST	NOT APPLICABLE							
ALT								



**NOTES**

CATEGORY	A	B	C	D
CIRCLING*	1760 (904-2.4)	1930 (1074-4.0)	NOT APPLICABLE	
ALTERNATE	(1404-4.4)	(1574-6.0)		

1. MAX IAS:  
INITIAL :  
CAT C 210KT.
- \* 2. NO CIRCLING IN  
SECTOR SW OF RWYS  
02/20 AND 11/29.
3. AWIS (PHONE)  
08 8150 3807

Changes: PAL+AA.

LECNB01-171