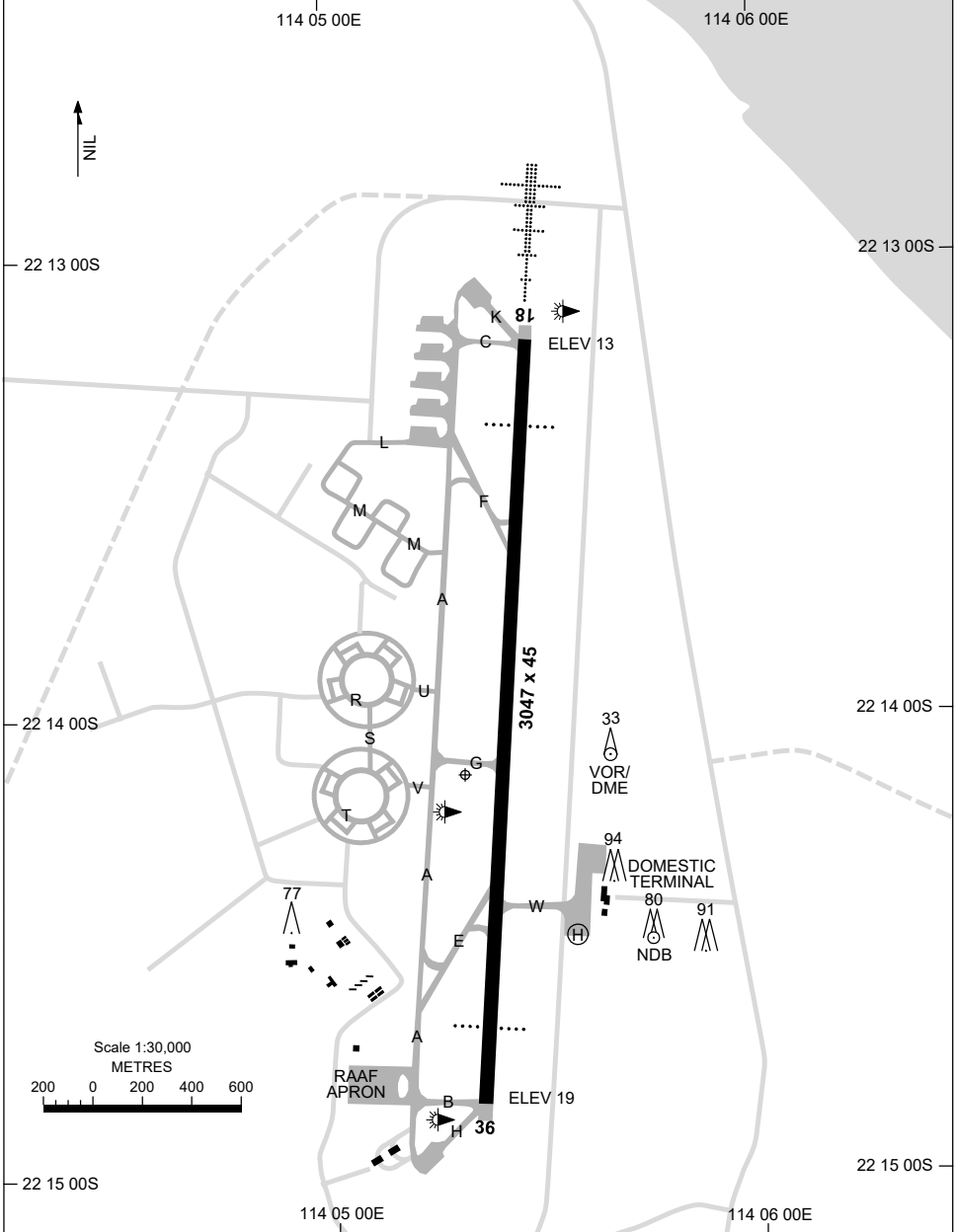


24 MAR 2022

FIA ML CEN 125.9	APP 120.5 261.4	TWR 118.3 257.8	SMC 259.3	CTAF+AFRU 118.3	AFRU+PAL 118.3	Bearings are Magnetic Elevations in FEET AMSL
---------------------	--------------------	--------------------	--------------	--------------------	-------------------	--



Changes: TWY LABELS.

PLMAD01-170

15 JUN 2023

AD ELEV 19
22 14 08S 114 05 19E

AERODROME CHART - Page 2
LEARMONTH, WA (YPLM)

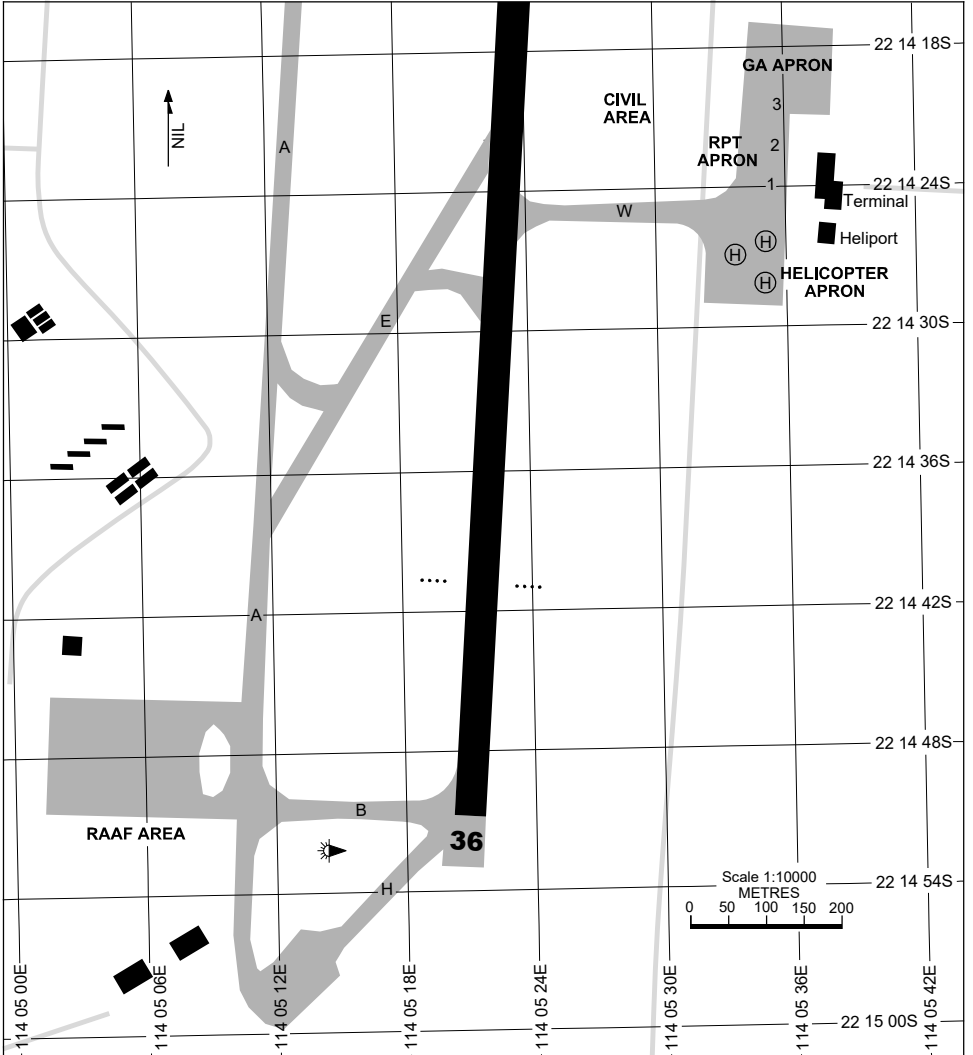
FIA ML CEN 125.9	APP 120.5 261.4	TWR 118.3 257.8	SMC 259.3	CTAF+AFRU 118.3	AFRU+PAL 118.3*	Bearings are Magnetic Elevations in FEET AMSL
RWY	AERODROME LIGHTING					
	TAXIWAY : GREEN CENTRELINE RL : AFRU+PAL 118.3*, SDBY (ARO : 08 9949 1326 , AH 0407 494 419)					
18 <small>184</small> <small>004</small> 36	PAPI 3.0° 50FT HIRL HIAL - CAT I PAPI 3.0° 50FT HIRL					
NOTES						
<ul style="list-style-type: none"> * 1. LIGHTING CIVIL OPS RQ 60 MIN PN WITH REPORTING AGENT. 2. AWIS (PHONE) 08 6216 2623 						

Changes: NOTES.

PLMAD02-175

30 NOV 2023

APRON CHART
LEARMONTH, WA (YPLM)



PARKING POSITION INFORMATION

STAND	CO-ORDINATES	ELEV (ft)	CAPACITY	HYDRANT FUEL
1	22 14 23.88S 114 05 36.17E	15	A320	JET A1
2	22 14 22.14S 114 05 36.49E	15	B712	JET A1
3	22 14 20.03S 114 05 36.64E	15	A320	JET A1

Changes: HELIPAD AND APN, Editorial.

PLMAP01-177

DME or GNSS ARRIVAL PROCEDURES LEARMONTH, WA (YPLM)

15 AUG 2019

FIA	APP	TWR	SMC	CTAF+AFRU	AFRU+PAL	Bearings are Magnetic Elevations in FEET AMSL
ML CEN 125.9	120.5 261.4	118.3 257.8	259.3	118.3	118.3	

25 NM MSA
2300
LM VOR or NDB
1900
R-210°
R-030°
R-210°
R-030°

**DME USING LM DME
REFERENCE WAYPOINT LM VOR**

AWIS (PHONE) 08 6216 2623

* NO CIRCLING WEST OF RWY 18/36.

10 NM MSA 2300

LM VOR/DME 112.4
LM NDB 396

AD ELEV 19

SECTOR A

VOR or NDB

MISSED APPROACH:

CLIMB ON TRACK TO 2300FT.

NM TO LM VOR	25	21	15	9	6	3	0												
CIRCLING MINIMA	A,B: 670-2.4			C: 760-4.0			D: 810-5.0												
NM TO LM VOR	7	6	5	4	3	2.3	2.1	1.8											
ALT (3° APCH PATH)	2300	2000	1680	1370	1050	810	760	670											

SECTOR B

VOR or NDB

MISSED APPROACH:

CLIMB ON TRACK TO 2300FT.

DME UNREL AT 2300FT BEYOND 23NM.
VOR UNREL AT 2300FT BEYOND 21NM.

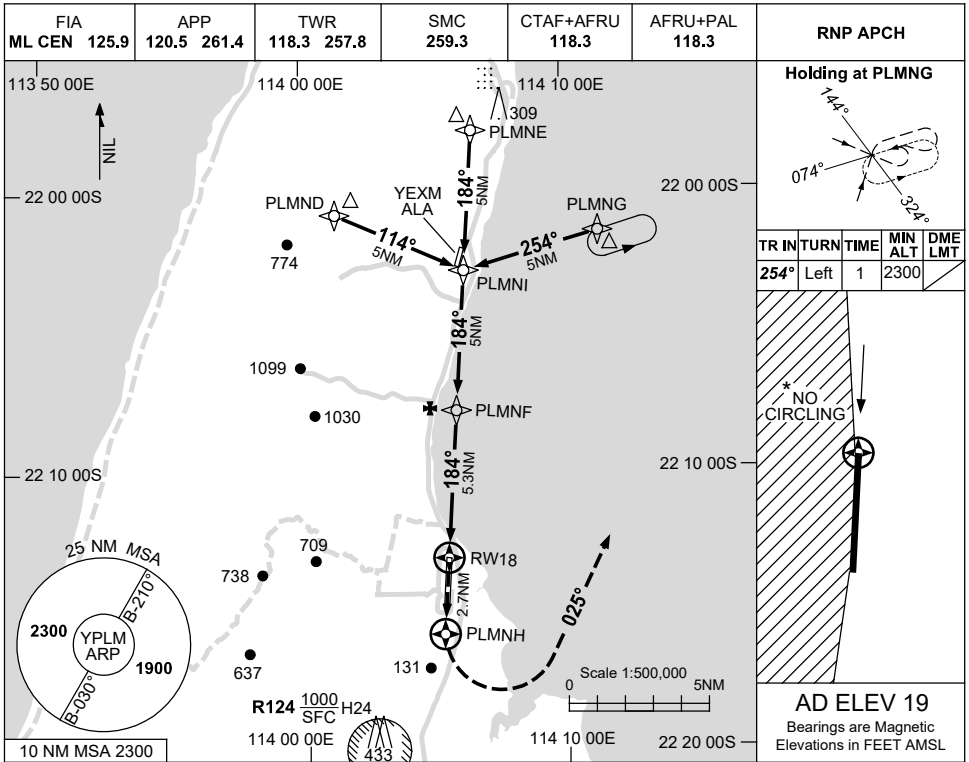
NM TO LM VOR	25	21	15	6	5	3	0												
CIRCLING MINIMA	A,B: 930-2.4			C: 930-4.0			D: 930-5.0												
NM TO LM VOR	6.1	6	5	4	3	2	1.8												
ALT (3° APCH PATH)	2300	2260	1940	1630	1310	990	930												

USE QNH

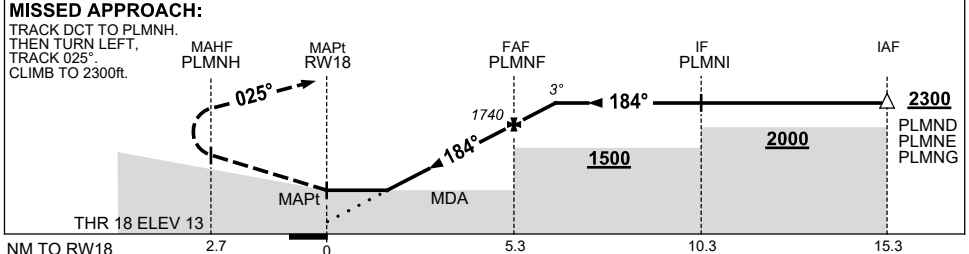
RNP RWY 18

21 MAR 2024

LEARMONTH, WA (YPLM)



NM TO NEXT WPT	RW18	1.5	2	3	4	PLMNF	1	1.8				
ALT (3° APCH PATH)		550	700	1020	1340	1740	2060	2300				



NOTES

1. MAX IAS: INITIAL : 210KT.
2. NO CIRCLING WEST OF RWY 18/36.
3. AWIS (PHONE) 08 6216 2623
4. R125 A/B LOCATED 005°MAG/20.7NM REF YPLM ARP

CATEGORY	A	B	C	D
LNAV	550 (531-2.1)			
CIRCLING*	660 (641-2.4)	760 (741-4.0)	810 (791-5.0)	
ALTERNATE	(1141-4.4)	(1241-6.0)	(1291-7.0)	

Changes: YEXM ALA, Editorial.

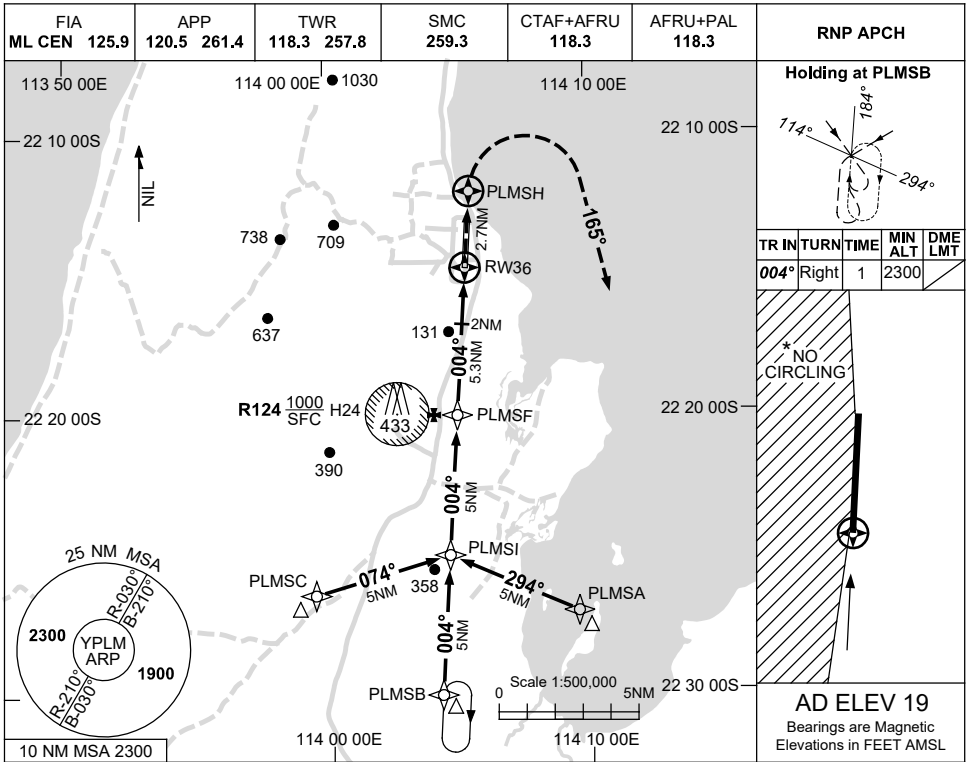
PLMGN01-178



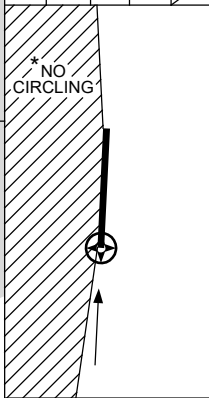
USE QNH

RNP RWY 36
LEARMONTH, WA (YPLM)

30 NOV 2023

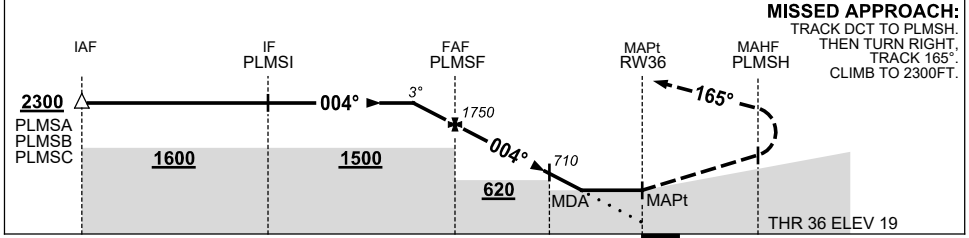


TR IN	TURN	TIME	MIN ALT	DME LMT
004°	Right	1	2300	



AD ELEV 19
Bearings are Magnetic
Elevations in FEET AMSL

NM TO NEXT WPT	1.7	1	PLMSF	4	3	2	1.5	RW36				
ALT (3° APCH PATH)	2300	2070	1750	1340	1020	710	550					



MISSED APPROACH:
TRACK DCT TO PLMSH.
THEN TURN RIGHT,
TRACK 165°.
CLIMB TO 2300FT.

NM TO RW36: 15.3, 10.3, 5.3, 2, 0, 2.7

NOTES

CATEGORY	A	B	C	D
LNAV	550 (531-3.0)			
CIRCLING*	660 (641-2.4)	760 (741-4.0)	810 (791-5.0)	
ALTERNATE	(1141-4.4)	(1241-6.0)	(1291-7.0)	

- MAX IAS:
INITIAL : 210KT.
- NO CIRCLING WEST OF RWY 18/36.
- AWIS (PHONE)
08 6216 2623

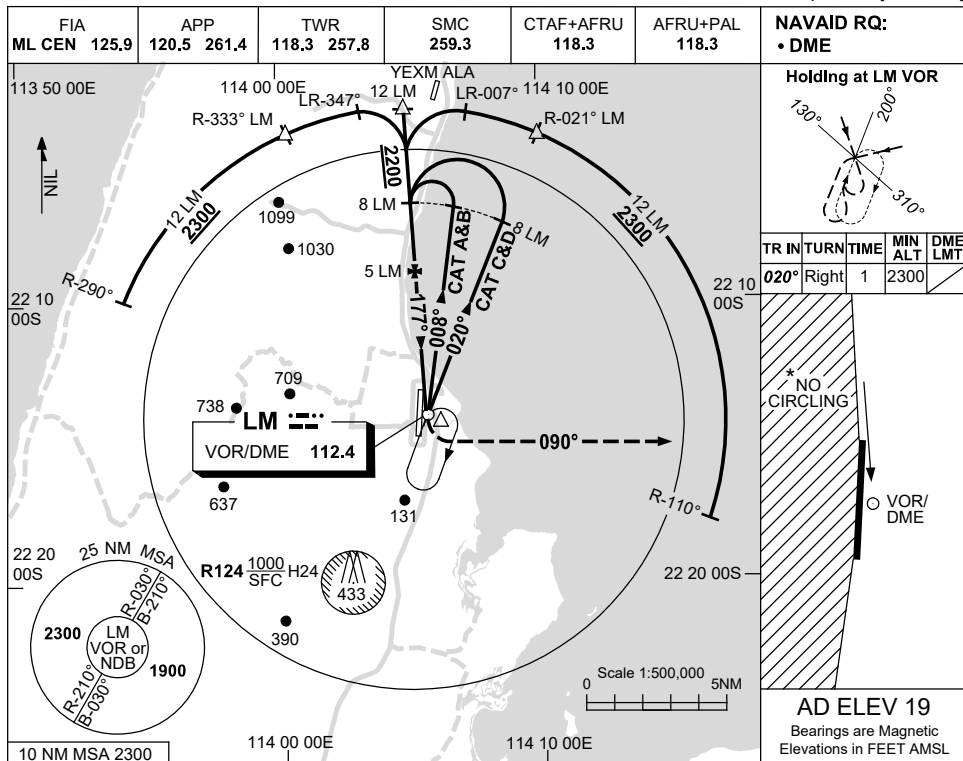
Changes: CHART TITLE, PBN SPECIFICATION BOX, Editorial.

PLMGN02-177

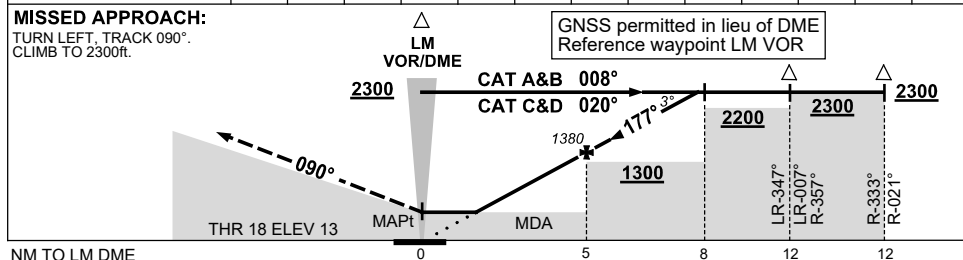
USE QNH

VOR RWY 18
LEARMONTH, WA (YPLM)

21 MAR 2024



DIST TO LM DME	2.4	3	4	5	6	7	7.9				
ALT (3° APCH PATH)	550	740	1060	1380	1700	2010	2300				



NOTES

CATEGORY	A	B	C	D
S-I VOR/DME	550 (531-3.0)			
CIRCLING *	660 (641-2.4)	760 (741-4.0)	810 (791-5.0)	
ALTERNATE	(1141-4.4)	(1241-6.0)	(1291-7.0)	

1. MAX IAS:
INITIAL : 210KT.
HOLDING : 210KT.
- * 2. NO CIRCLING WEST OF RWY 18/36.
3. AWIS (PHONE)
08 6216 2623

Changes: YEXM ALA, Editorial.

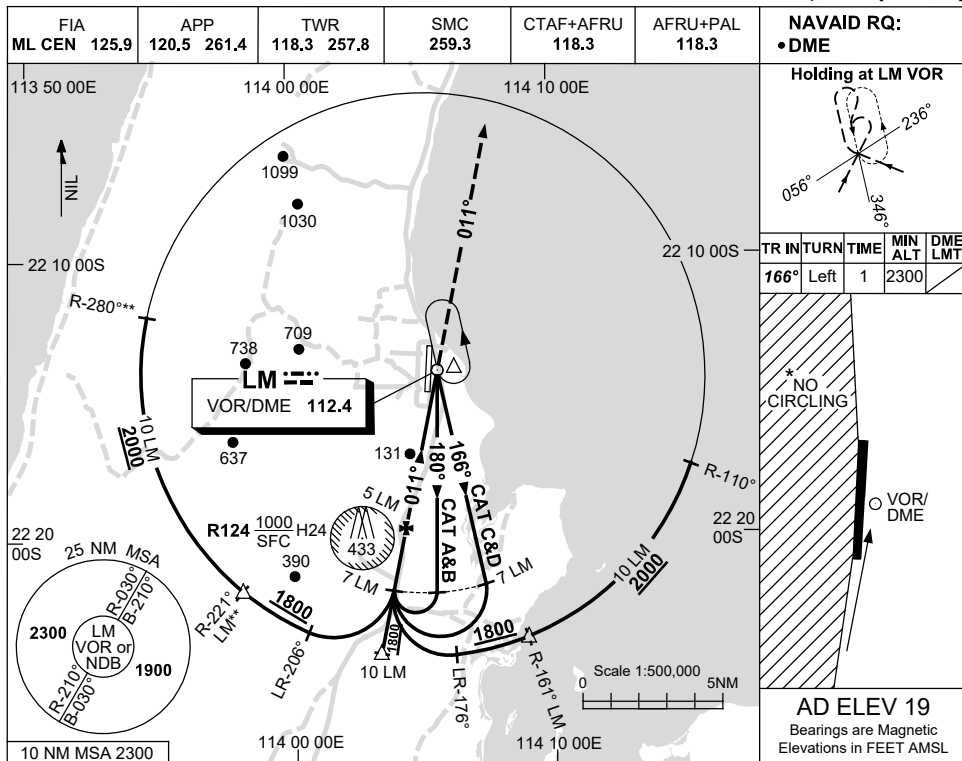
PLMVO01-178



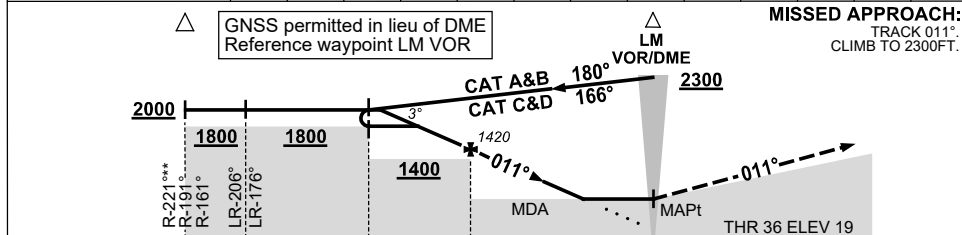
USE QNH

VOR RWY 36
LEARMONTH, WA (YPLM)

15 AUG 2019



DIST TO LM DME	6.8	6	5	4	3	2.5						
ALT (3° APCH PATH)	2000	1730	1420	1100	780	620						



CATEGORY	A	B	C	D
S-I VOR/DME	610 (591-3.3)			
CIRCLING *	660 (641-2.4)	760 (741-4.0)	810 (791-5.0)	
ALTERNATE	(1141-4.4)	(1241-6.0)	(1291-7.0)	

NOTES

- MAX IAS:
INITIAL : 210KT.
HOLDING: 210KT.
- NO CIRCLING WEST OF RWY 18/36.
- WESTERN ARC AVAILABILITY SUBJECT TO ATC CLEARANCE WHEN LM APP/TWR ACTIVATED.
- AWIS (PHONE)
08 6216 2623

Changes: COORD FORMAT, NOTE 4, Editorial.

PLMVO02-160