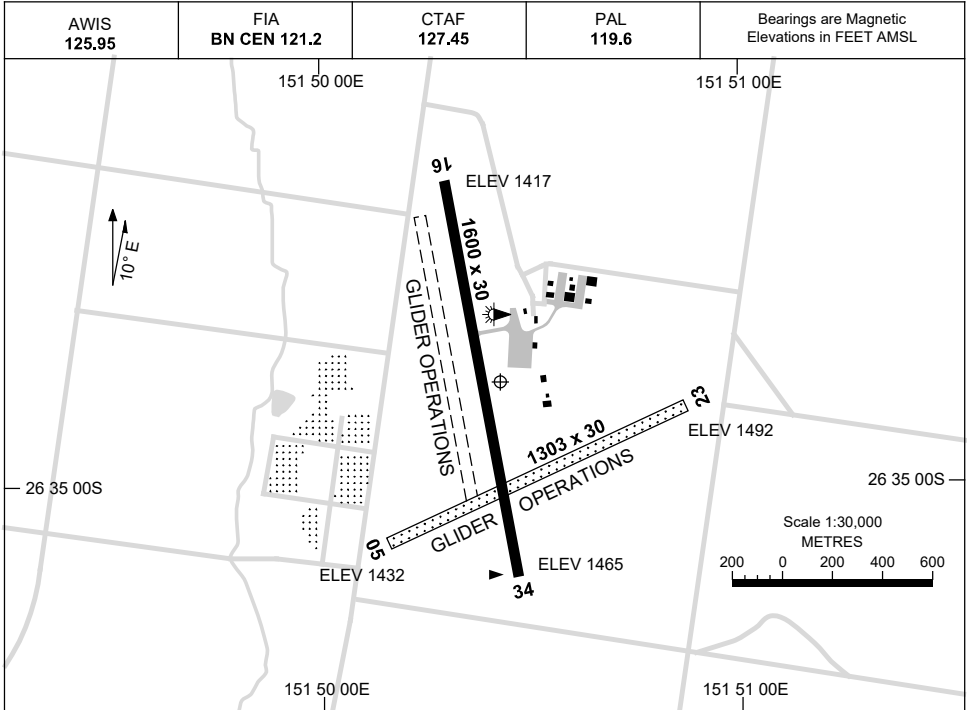


15 JUN 2023

AD ELEV 1492  
26 34 51S 151 50 28E

AERODROME CHART  
**KINGAROY, QLD (YKRY)**



	<b>AERODROME LIGHTING</b>	
<b>RWY</b>	TAXIWAY: BLUE EDGE RL : PAL 119.6 , PTBL EMERG ONLY , SDBY (PN)	
<b>16</b> <sup>159</sup> 339 <b>34</b>	LIRL	
<b>05</b> <sup>055</sup> 235 <b>23</b>	NIL	

**NOTES**

1. PAL REQUIRES THREE TIMES ONE SECOND PULSES WI A 14-SEC PERIOD.

Changes: LIGHTING AND NOTES.

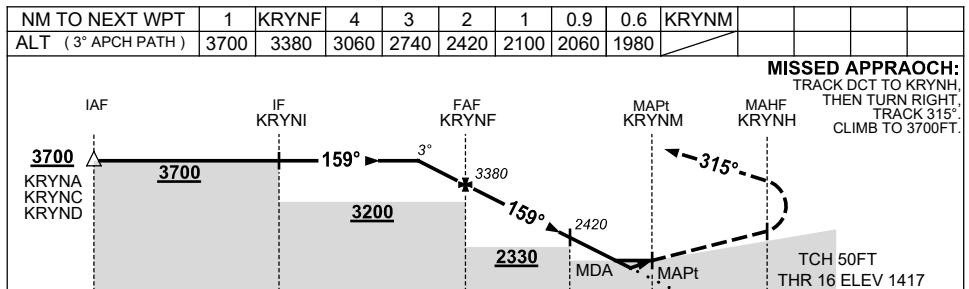
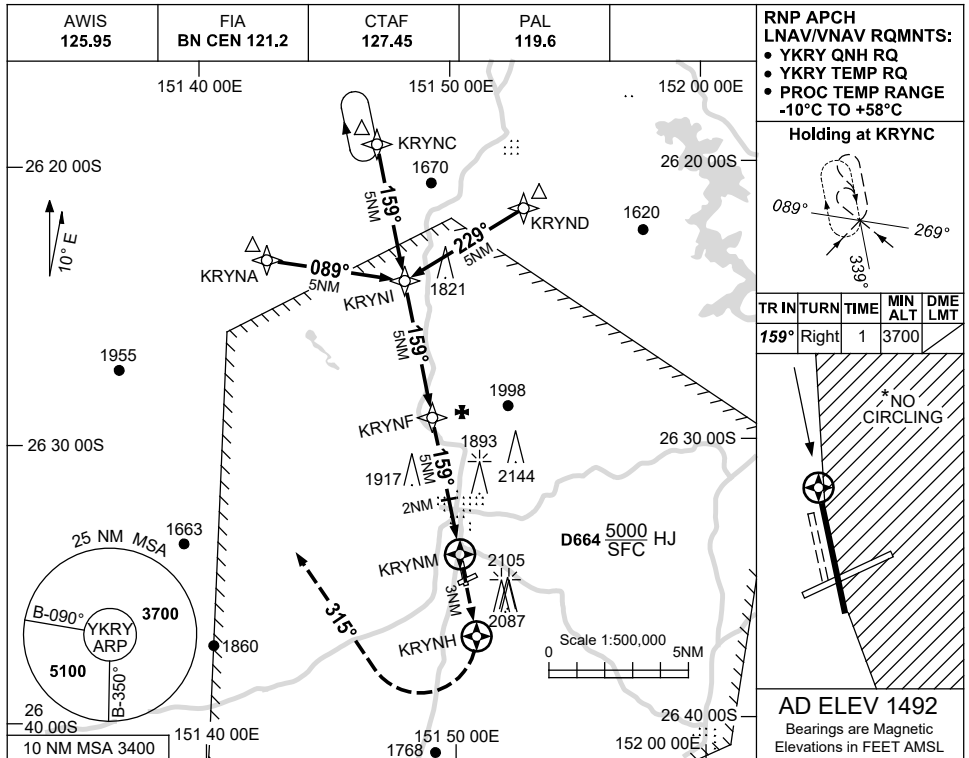
KRYAD01-175

USE QNH

RNP RWY 16

**KINGAROY, QLD (YKRY)**

15 JUN 2023



**NOTES**

CATEGORY	A	B	C	D
LNAV/VNAV	<b>1980 (563-3.2)</b>			
LNAV	<b>2060 (643-3.7)</b>			
CIRCLING*	<b>2500 (1008-2.4)</b>		<b>2640 (1148-4.0)</b>	
ALTERNATE	<b>(1508-4.4)</b>		<b>(1648-6.0)</b>	

1. MAX IAS:  
INITIAL : 210KT.  
  
\* 2. NO CIRCLING IN  
SECTOR EAST  
OF RWY 16/34.

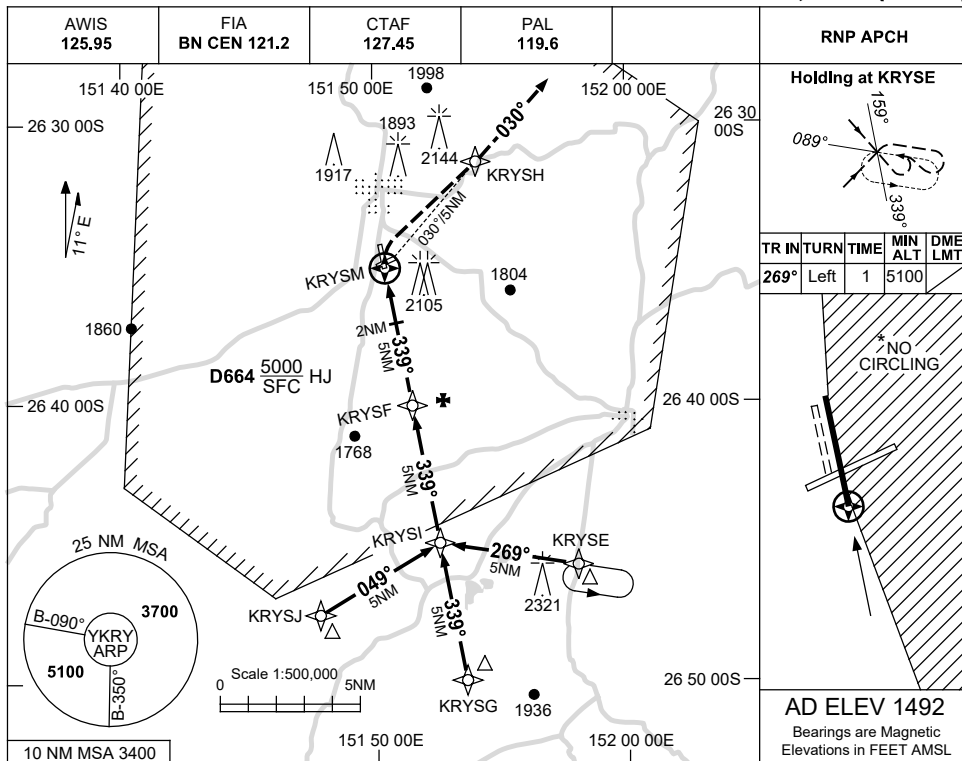
Changes: REMOVE MODEL ACFT.

KRYGN01-175

USE QNH

RNP RWY 34  
KINGAROY, QLD (YKRY)

21 MAR 2024

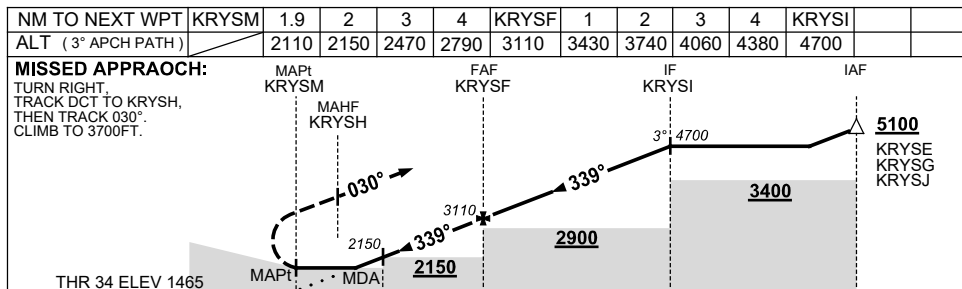


**Holding at KRYSE**

TR	IN	TURN	TIME	MIN ALT	DME LMT
269°	Left	1		5100	

**AD ELEV 1492**  
Bearings are Magnetic  
Elevations in FEET AMSL

\* NO CIRCLING



**NOTES**

CATEGORY	A	B	C	D
LNAV	2110 (645-3.7)			NOT APPLICABLE
CIRCLING*	2500 (1008-2.4)	2640 (1148-4.0)		
ALTERNATE	(1508-4.4)		(1648-6.0)	

- MAX IAS: INITIAL : 210KT.
- \* NO CIRCLING IN SECTOR EAST OF RWY 16/34.

Changes: Editorial

KRYGN02-178