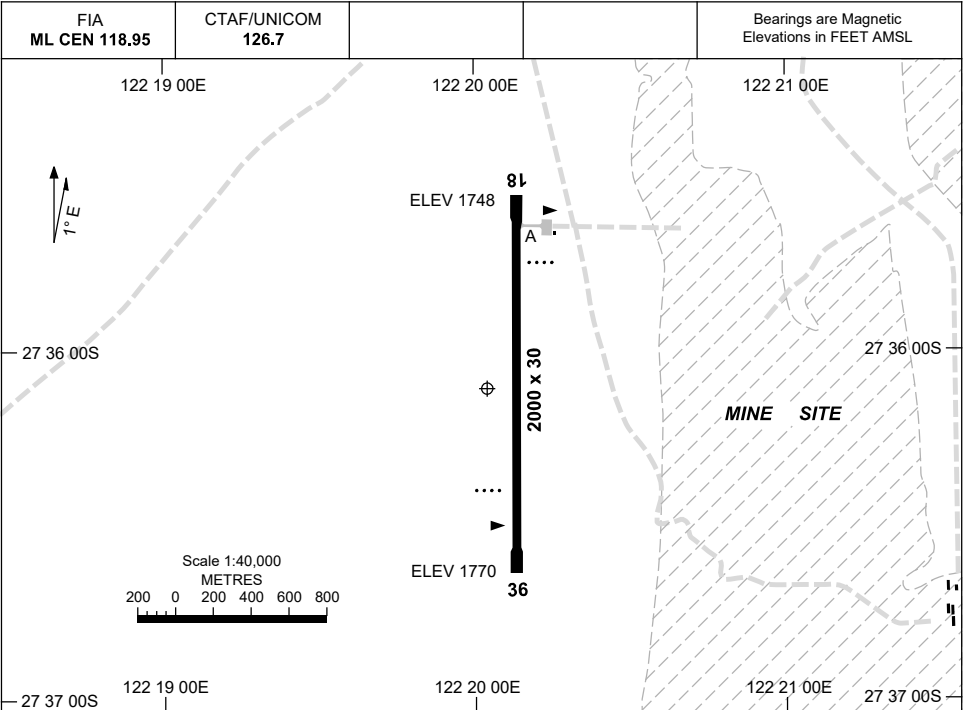


15 JUN 2023

AD ELEV 1770  
27 36 07S 122 20 02E

AERODROME CHART  
**DUKETON GOLD, WA (YDKG)**



	<b>AERODROME LIGHTING</b>
<b>RWY</b>	RL : PTBL IN EMERG (60 MIN PN MILL CONTROL: 08 8151 3665)
<b>18</b> <small>179</small>	PAPI 3.0° 48.5FT PTBL
<small>359</small> <b>36</b>	PAPI 3.0° 48.5FT PTBL

**NOTES**

1. PAPI - MANUAL ACTIVATION. 60 MIN PN (MIL CONTROL 08 8151 3665).

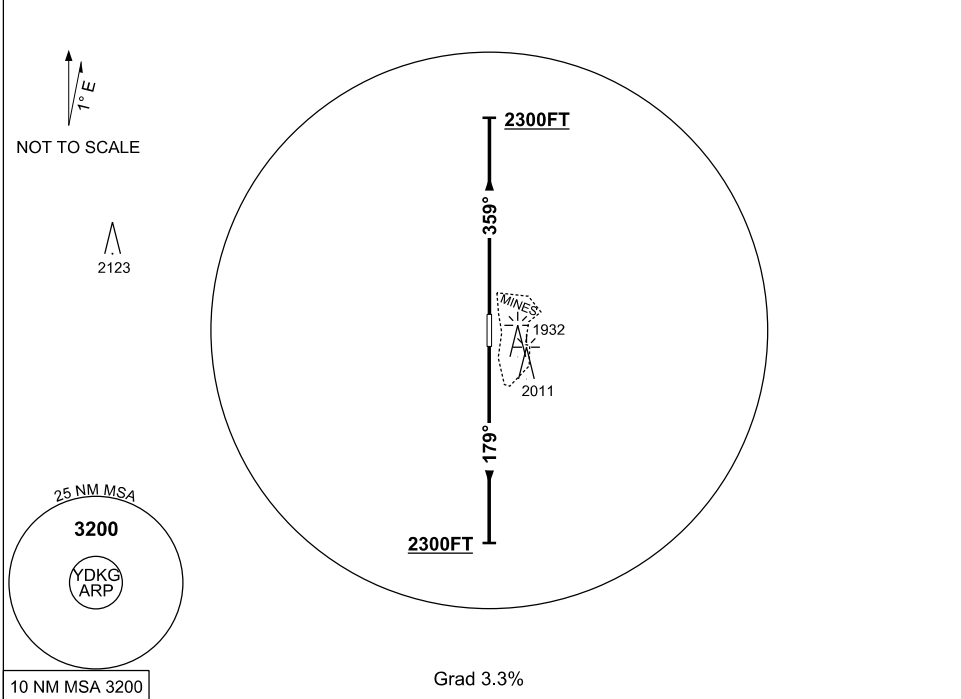
Changes: Editorial.

DKGAD01-175

**STANDARD INSTRUMENT DEPARTURE (SID)  
DUKETON GOLD ONE DEPARTURE  
DUKETON GOLD, WA (YDKG)**

**1 DEC 2022**

FIA <b>ML CEN 118.95</b>	CTAF/UNICOM <b>126.7</b>				Bearings are Magnetic Elevations in FEET AMSL
-----------------------------	-----------------------------	--	--	--	--



<p><b>DUKETON GOLD ONE DEPARTURE</b></p> <p><b>RWY 18</b></p> <ul style="list-style-type: none"> <li>• Track 179°</li> <li>• At or above 2300FT turn as required</li> <li>• Intercept flight plan route</li> </ul>	<p><b>RWY 36</b></p> <ul style="list-style-type: none"> <li>• Track 359°</li> <li>• At or above 2300FT turn as required</li> <li>• Intercept flight plan route</li> </ul>
--	---

**NOTES**

- NIL -

Changes: 1932FT OBST.

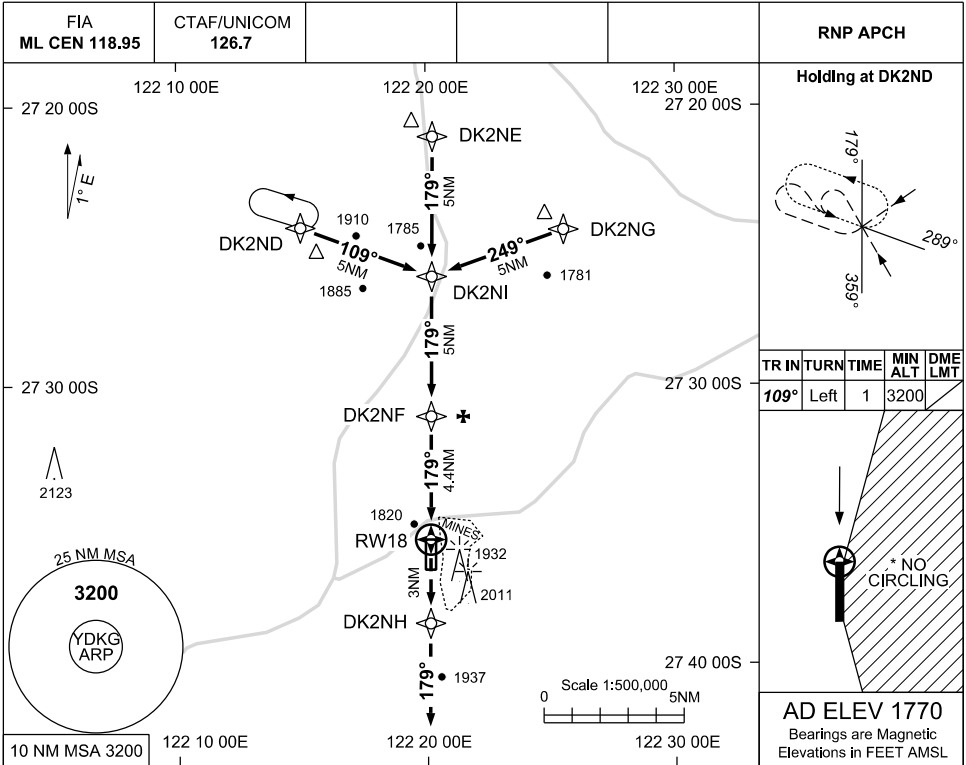
DKGDP01-173

USE QNH

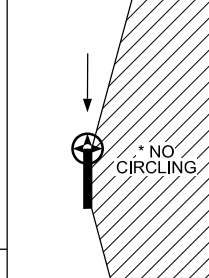
RNP RWY 18

DUKETON GOLD, WA (YDKG)

30 NOV 2023

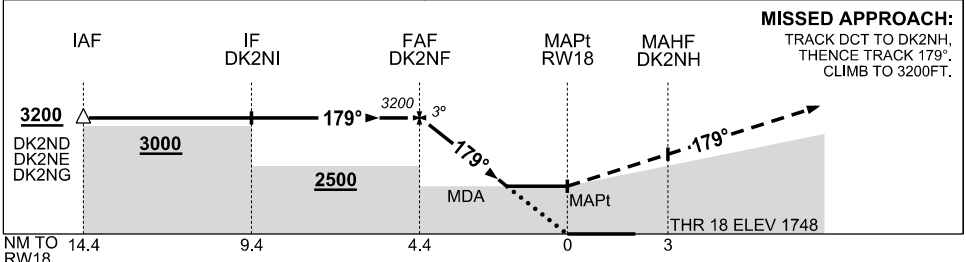


TR IN	TURN	TIME	MIN ALT	DME LMT
109°	Left	1	3200	



**AD ELEV 1770**  
Bearings are Magnetic  
Elevations in FEET AMSL

NM TO NEXT WPT	DK2NF	4	3	2	1.6	RW18								
ALT (3° APCH PATH)	3200	3070	2750	2430	2300									



**NOTES**

- MAX IAS:  
INITIAL 210KT
- CAUTION:** CHECK  
BLASTING TIMES  
WITH A/D OPERATOR
- \*3. NO CIRCLING EAST OF  
RWY 18/36

CATEGORY	A	B	C	D
LNAV	2300 (552 - 3.1)			NOT AUTHORISED
CIRCLING*	2420 (650 - 2.4)		2540 (770 - 4.0)	
ALTERNATE	(1150 - 4.4)		(1270 - 6.0)	

Changes: CHART TITLE, PBN SPECIFICATION BOX

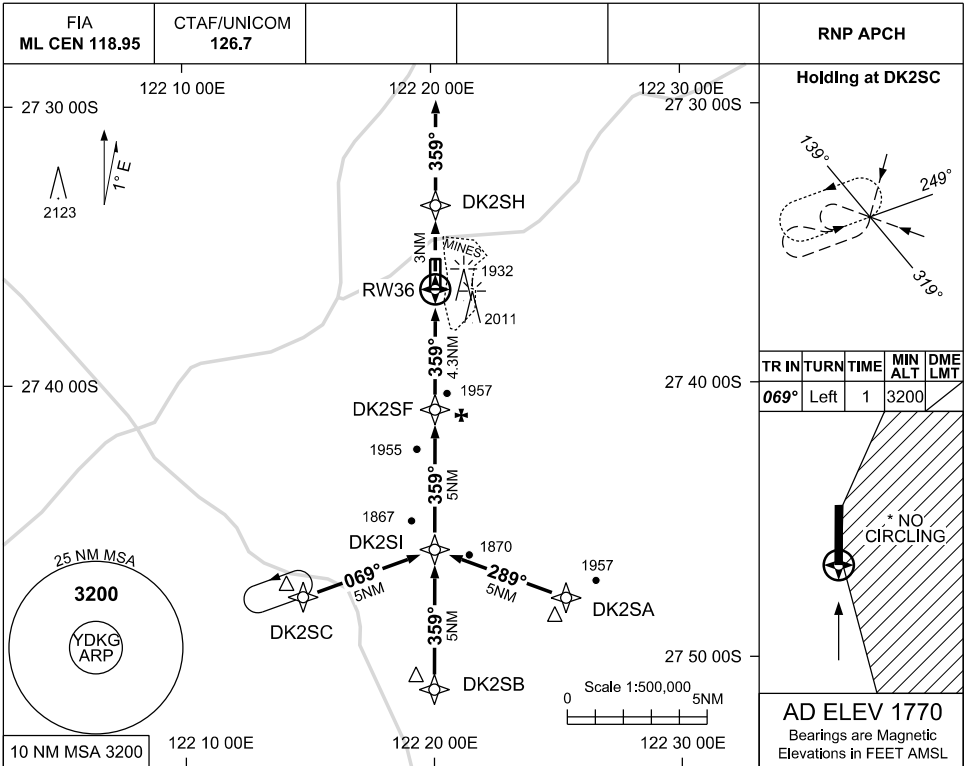
DKGGN01-177

USE QNH

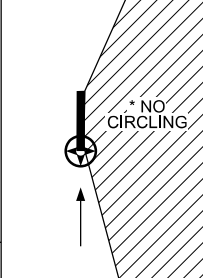
RNP RWY 36

DUKETON GOLD, WA (YDKG)

30 NOV 2023

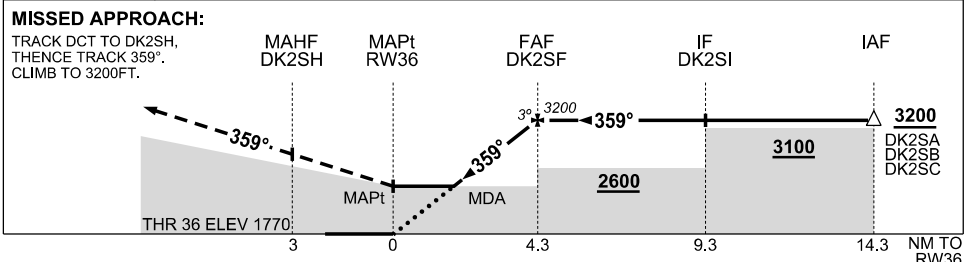


TR IN	TURN TIME	MIN ALT	DME LMT
069°	Left	1	3200



**AD ELEV 1770**  
Bearings are Magnetic  
Elevations in FEET AMSL

NM TO NEXT WPT	RW36	1.8	2	3	4	DK2SF								
ALT (3° APCH PATH)		2390	2460	2780	3090	3200								



**NOTES**

- MAX IAS:  
INITIAL 210KT
- CAUTION:** CHECK  
BLASTING TIMES  
WITH A/D OPERATOR
- \*3. NO CIRCLING EAST  
OF RWY 18/36

CATEGORY	A	B	C	D
LNAV	2390 (620 - 3.5)			NOT AUTHORISED
CIRCLING*	2420 (650 - 2.4)	2540 (770 - 4.0)		
ALTERNATE	(1150 - 4.4)		(1270 - 6.0)	

Changes: CHART TITLE, PBN SPECIFICATION BOX

DKGGN02-177