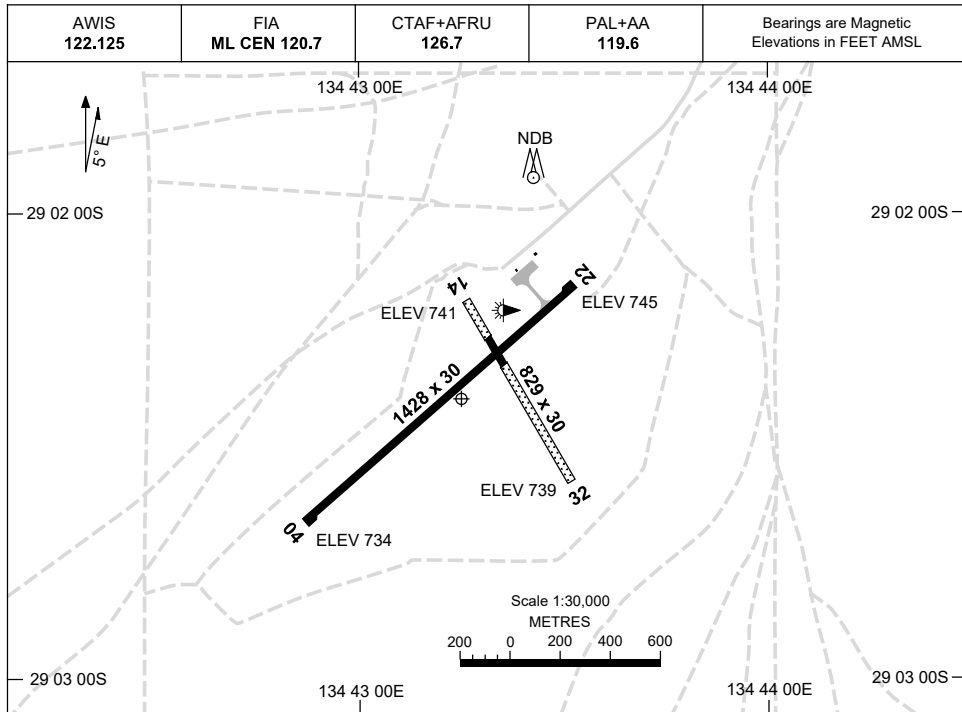


16 JUN 2022

AD ELEV 745  
29 02 24S 134 43 15E

AERODROME CHART  
**COOBER PEDY, SA (YCBP)**



	<b>AERODROME LIGHTING</b>	
<b>RWY</b>	TAXIWAY : BLUE EDGE RL : PAL+AA 119.6 , PTBL IN EMERG	
<b>04</b> <small>043</small>	LIRL	
<small>223</small> <b>22</b>	LIRL	
<b>14</b> <small>145</small>	NIL	
<small>325</small> <b>32</b>	NIL	

**NOTES**

1. AWIS RQ ONE-SECOND PULSE TO ACTIVATE.
2. FIA FREQ 120.7 AVBL 7000FT.

# GNSS ARRIVAL PROCEDURES COOBER PEDY, SA (YCBP)

16 JUN 2022

AWIS 122.125	FIA ML CEN 120.7	CTAF+AFRU 126.7	PAL+AA 119.6		Bearings are Magnetic Elevations in FEET AMSL
-----------------	---------------------	--------------------	-----------------	--	--

25 NM MSA

2200

CBP NDB

10 NM MSA 2200

**REFERENCE WAYPOINT CBP NDB**

CBP NDB 341

AD ELEV 745

**SECTOR A**

133°

174°

CBP NDB

2200

1700

1700

3°

MDA

MAPt

355°

2200

NDB

**MISSED APPROACH:**

TURN LEFT,  
TRACK 355°.  
CLIMB TO 2200FT.

**MAX IAS:** 190KT UNTIL  
ESTABLISHED ON 355°

<b>CIRCLING MINIMA</b>	A,B: 1390-2.4	C: 1620-4.0	D: N/A																
NM TO CBP NDB	4.6	4	3	2.7	2														
ALT (3° APCH PATH)	2200	2020	1700	1620	1390														

**SECTOR B**

174°

205°

CBP NDB

2200

1700

1700

3°

MDA

MAPt

355°

2200

NDB

**MISSED APPROACH:**

TURN RIGHT,  
TRACK 355°.  
CLIMB TO 2200FT.

**MAX IAS:** 190KT UNTIL  
ESTABLISHED ON 355°

<b>CIRCLING MINIMA</b>	A,B: 1390-2.4	C: 1620-4.0	D: N/A																
NM TO CBP NDB	4.6	4	3	2.7	2														
ALT (3° APCH PATH)	2200	2020	1700	1620	1390														

**SECTOR C**

133°

200°

CBP NDB

2200

1700

1700

3°

MDA

MAPt

355°

2200

NDB

**MISSED APPROACH:**

CLIMB ON TRACK TO  
2200FT.

PROC NOT AVBL  
WHEN R246A,B  
ACTIVE.

<b>CIRCLING MINIMA</b>	A,B: 1530-2.4	C: 1620-4.0	D: N/A																
NM TO CBP NDB	4.6	4	3	2.7	2.5														
ALT (3° APCH PATH)	2200	2020	1700	1620	1530														

Changes: SECTOR C MINIMA, DIST/ALT TABLE, PAL+AA.

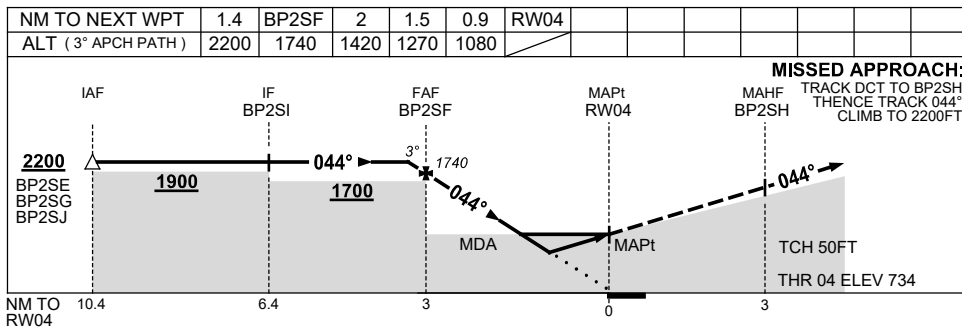
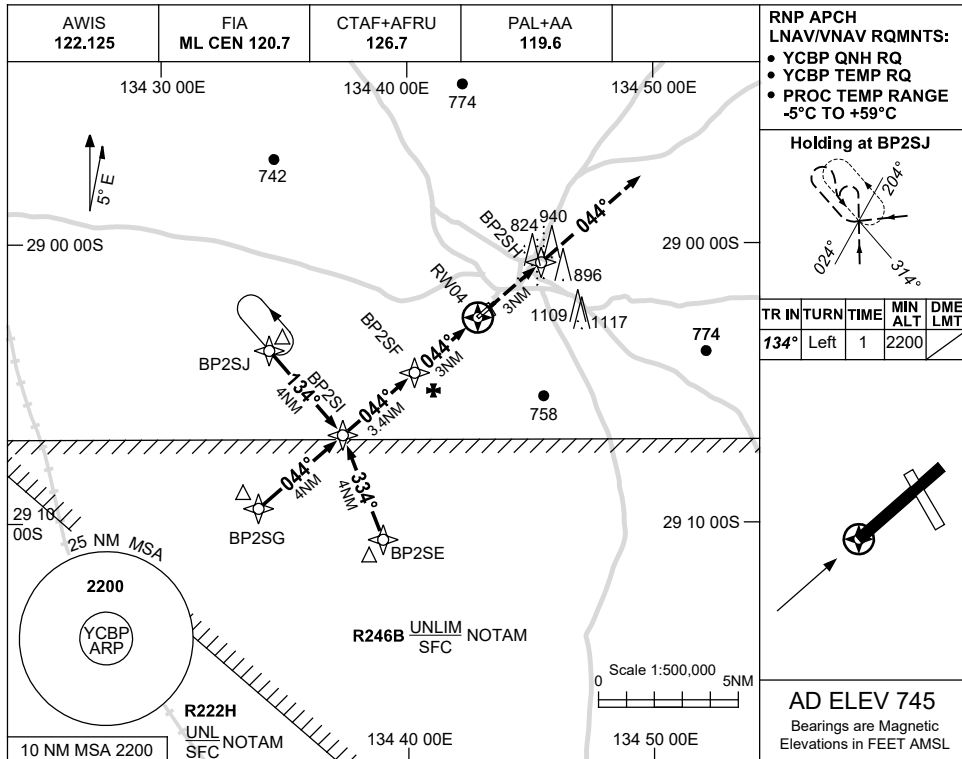
CBPDG01-171

USE QNH

RNP RWY 04

1 DEC 2022

COOBER PEDY, SA (YCBP)



**NOTES**

CATEGORY	A	B	C	D
LNAV/VNAV		<b>1080</b> (346-1.9)		<b>NOT APPLICABLE</b>
LNAV		<b>1270</b> (536-3.0)		
CIRCLING	<b>1390</b> (645-2.4)		<b>1620</b> (875-4.0)	
ALTERNATE	(1145-4.4)		(1375-6.0)	

- MAX IAS: INITIAL : 180KT.
- PROC NOT AVBL WHEN R246B ACTIVE.

Changes: CHART TITLE, PBN SPECIFICATION BOX.

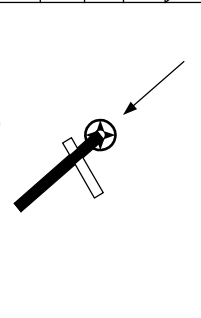
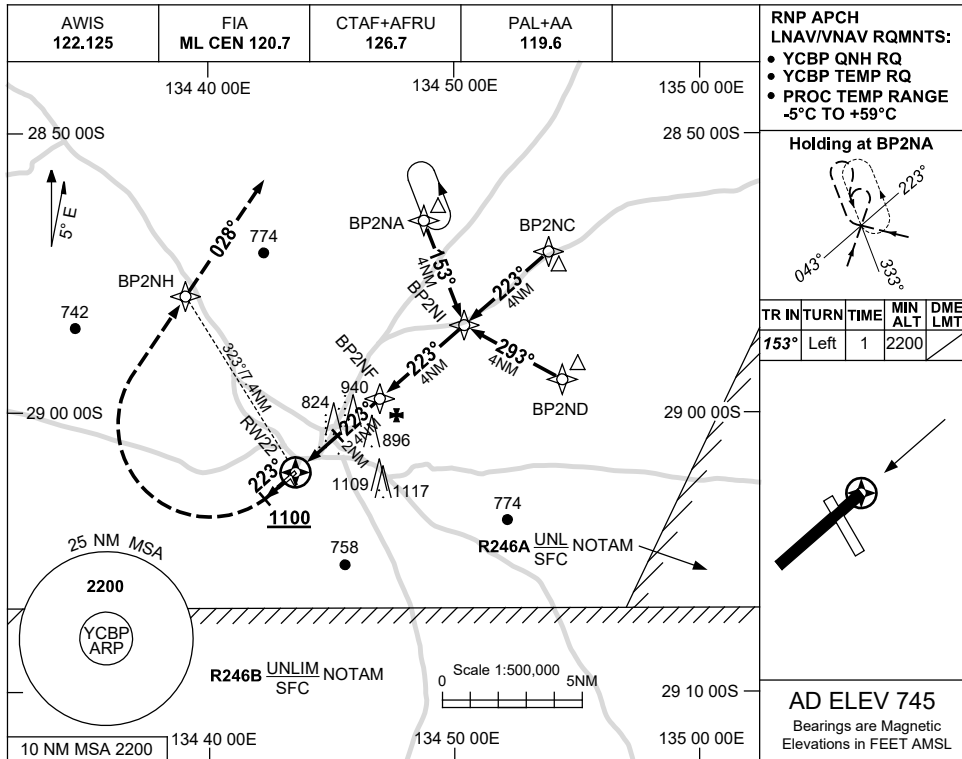
CBPGN01-173

USE QNH

RNP RWY 22

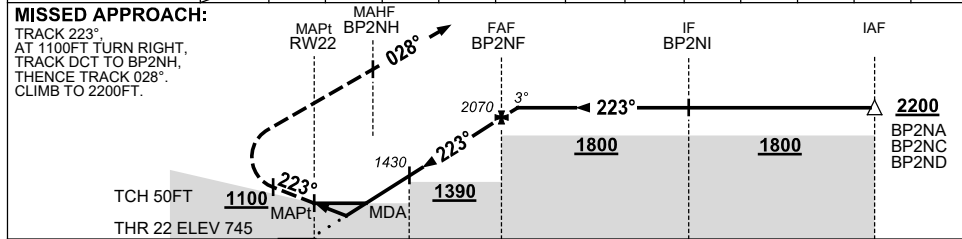
COOBER PEDY, SA (YCBP)

1 DEC 2022



**AD ELEV 745**  
Bearings are Magnetic  
Elevations in FEET AMSL

NM TO NEXT WPT	RW22	0.9	1.5	2	3	BP2NF	0.4				
ALT (3° APCH PATH)		1080	1270	1430	1750	2070	2200				



**NOTES**

1. MAX IAS:  
INITIAL : 210KT.

CATEGORY	A	B	C	D
LNAV/VNAV		1080 (335-1.9)		NOT APPLICABLE
LNAV		1270 (525-3.0)		
CIRCLING	1390 (645-2.4)		1620 (875-4.0)	
ALTERNATE	(1145-4.4)		(1375-6.0)	

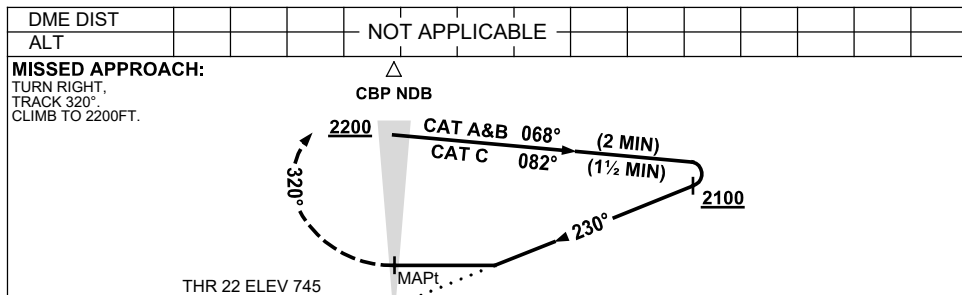
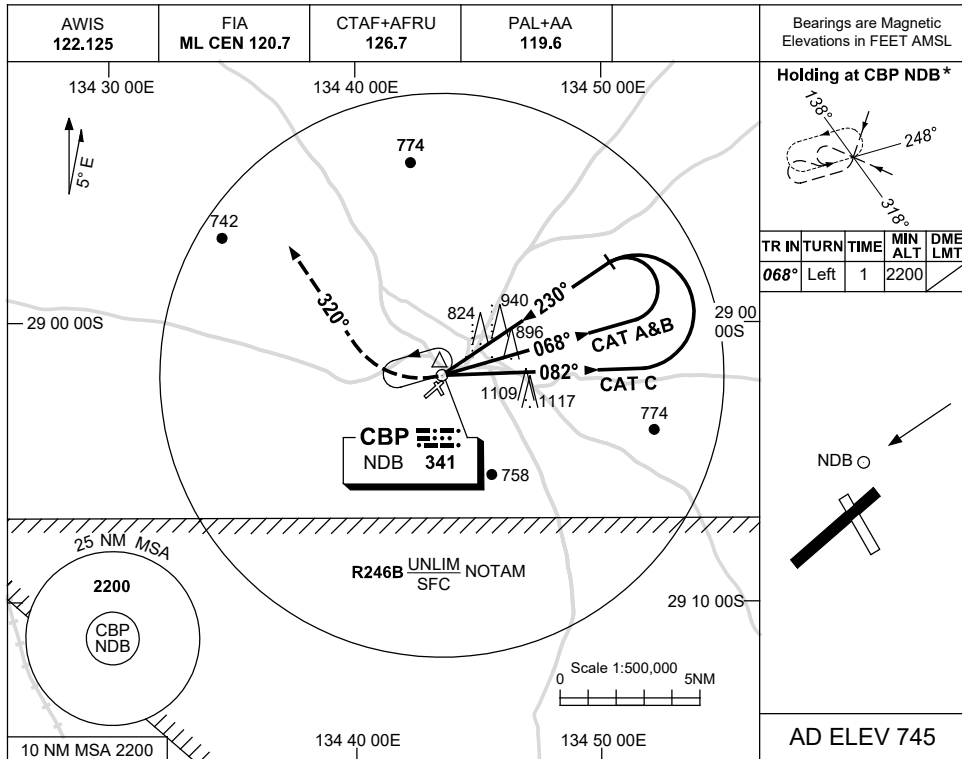
Changes: CHART TITLE, PBN SPECIFICATION BOX.

CBPGN02-173

USE QNH

NDB RWY 22  
**COOBER PEDY, SA (YCPB)**

16 JUN 2022



**NOTES**

CATEGORY	A	B	C	D
S-I NDB	1390 (645-3.7)			NOT APPLICABLE
CIRCLING	1390 (645-2.4)	1620 (875-4.0)		
ALTERNATE	(1145-4.4)	(1375-6.0)		

1. MAX IAS:  
 INITIAL : 210KT  
 HOLDING: 180KT.
- \* 2. HOLDING NOT AVBL  
 WHEN R246B ACTIVE.

Changes: MAG VAR, PAL+AA.

CBPNB01-171