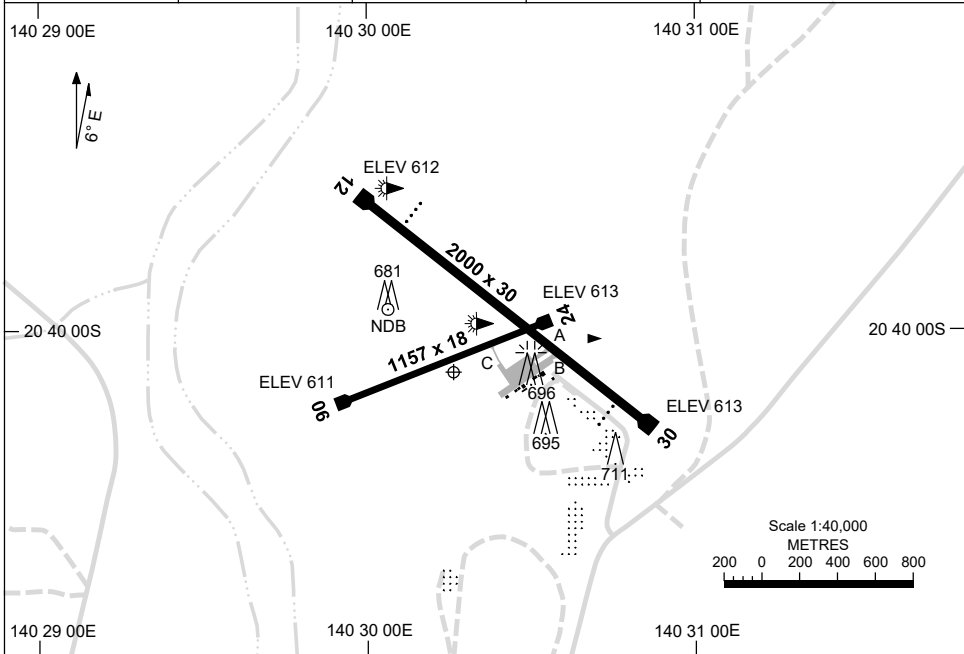


30 NOV 2023

AD ELEV 613
20 40 07S 140 30 16E

AERODROME CHART
CLONCURRY, QLD (YCCY)

AWIS 128.05	FIA BN CEN 122.4	CTAF+AFRU 126.7	AFRU+PAL 126.7	Bearings are Magnetic Elevations in FEET AMSL
----------------	---------------------	--------------------	-------------------	--



AERODROME LIGHTING	
RWY	TAXIWAY : GREEN CENTRELINE TWY A , BLUE EDGE TWY B RL : AFRU+PAL 126.7 , PTBL (EMERG ONLY , 40 MIN PN) , SDBY (15 SEC)
12 ¹²² 302 30	PAPI 3.0° 46FT LIRL PTBL PAPI 3.0° 46FT LIRL PTBL
06 ⁰⁶² 242 24	NIL NIL

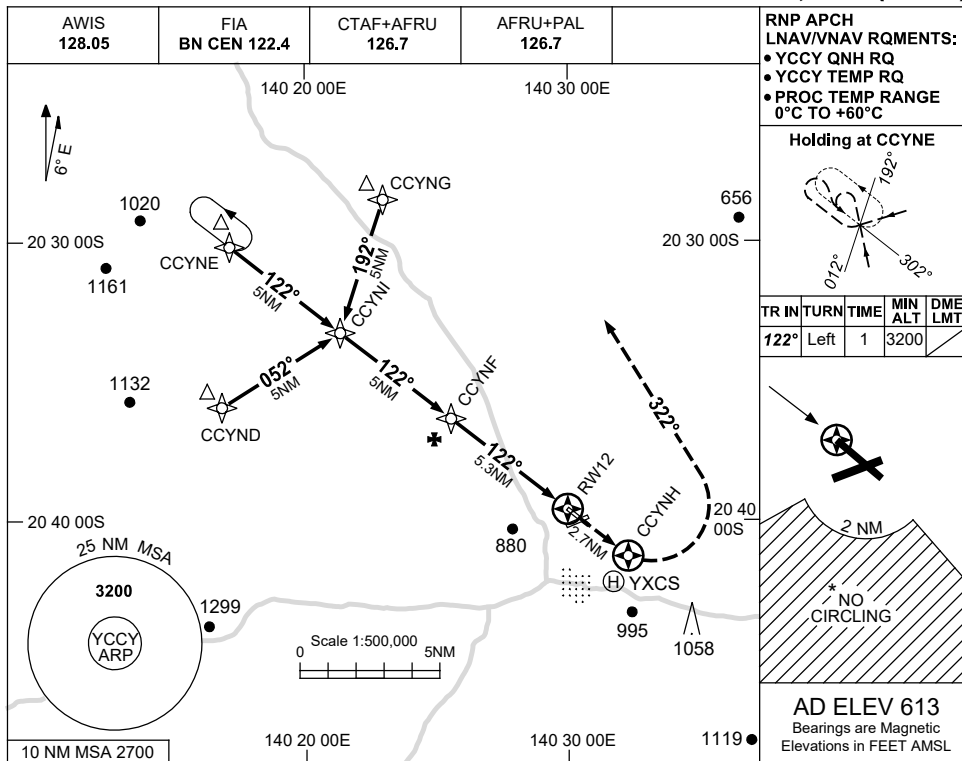
NOTES

- FIA FREQ 122.4 AVBL ABV 3500FT.
- AWIS REQUIRES 1 SEC PULSE TO ACTIVATE.

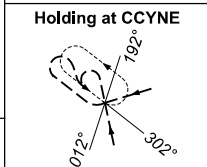
USE QNH

RNP RWY 12
CLONCURRY, QLD (YCCY)

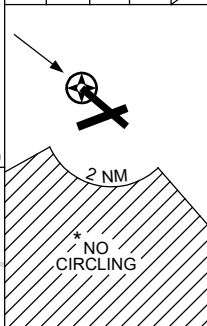
16 JUN 2022



RNP APCH
LNAV/VNAV RQMENTS:
• YCCY QNH RQ
• YCCY TEMP RQ
• PROC TEMP RANGE
0°C TO +60°C

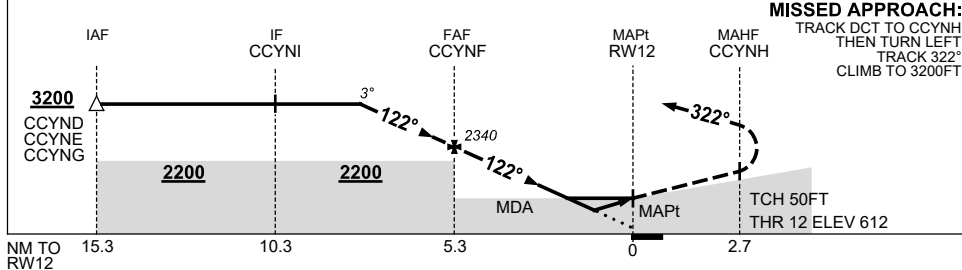


TR IN	TURN	TIME	MIN ALT	DME LMT
122°	Left	1	3200	



AD ELEV 613
Bearings are Magnetic
Elevations in FEET AMSL

NM TO NEXT WPT	2.7	2	1	CCYNF	4	3	2	1.8	1.2	RWY12			
ALT (3° APCH PATH)	3200	2980	2660	2340	1940	1620	1300	1250	1060				



MISSED APPROACH:
TRACK DCT TO CCYNH,
THEN TURN LEFT,
TRACK 322°,
CLIMB TO 3200FT.

NOTES

CATEGORY	A	B	C	D
LNAV/VNAV		1060 (448-2.5)		NOT APPLICABLE
LNAV		1250 (637-3.6)		
CIRCLING *	1570 (957-2.4)		1570 (957-4.0)	
ALTERNATE	(1457-4.4)		(1457-6.0)	

- MAX IAS:
INITIAL : 210KT.
- * NO CIRCLING IN
SECTOR SOUTH OF
RWYS 06 AND 30
BEYOND 2NM.

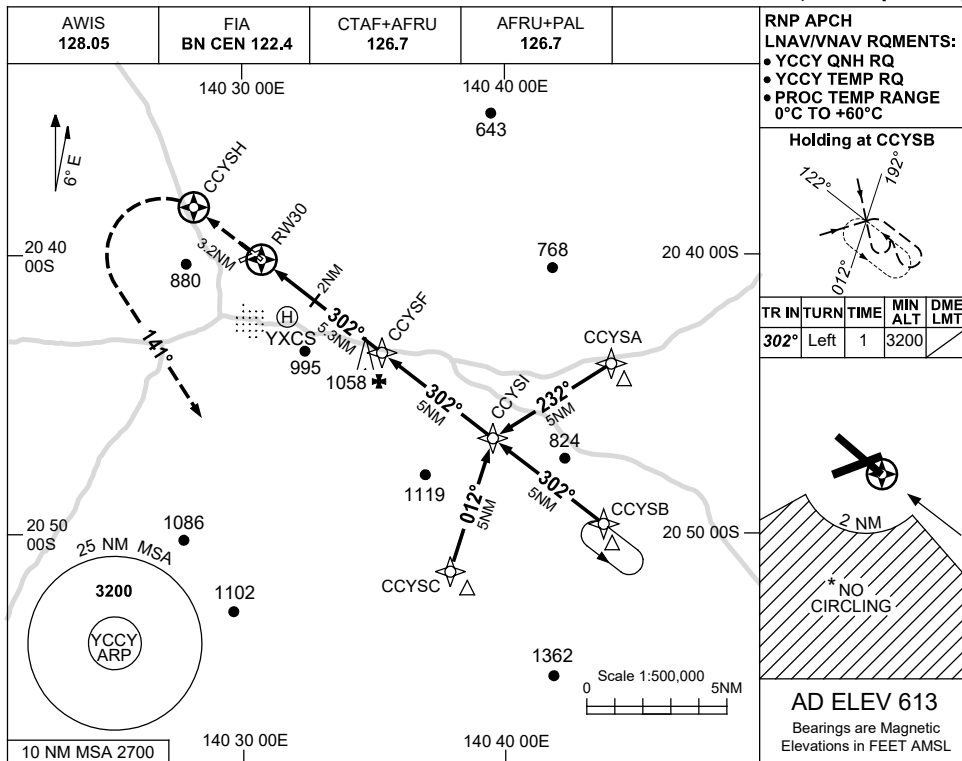
Changes: CHART TITLE, PBN SPECIFICATION BOX.

CCYGN01-171

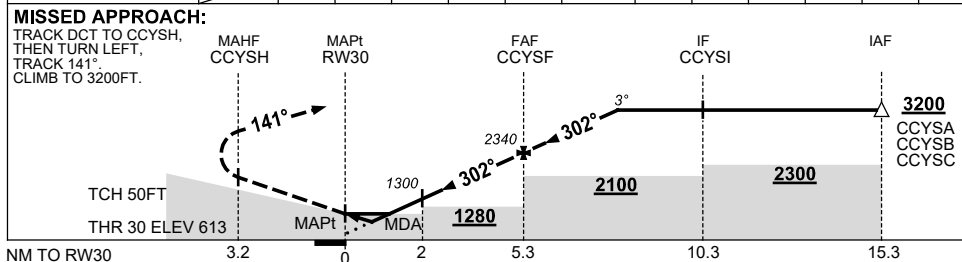
USE QNH

RNP RWY 30
CLONCURRY, QLD (YCCY)

16 JUN 2022



NM TO NEXT WPT	RW30	1	1.7	2	3	4	CCYSF	1	2	2.7		
ALT (3° APCH PATH)		990	1190	1300	1620	1940	2340	2660	2980	3200		



NOTES

CATEGORY	A	B	C	D
LNAV/VNAV	990 (377-2.1)			NOT APPLICABLE
LNAV	1190 (577-3.3)			
CIRCLING*	1570 (957-2.4)		1570 (957-4.0)	
ALTERNATE	(1457-4.4)		(1457-6.0)	

1. MAX IAS: INITIAL : 210KT.
* 2. NO CIRCLING IN SECTOR SOUTH OF RWYS 06 AND 30 BEYOND 2NM.

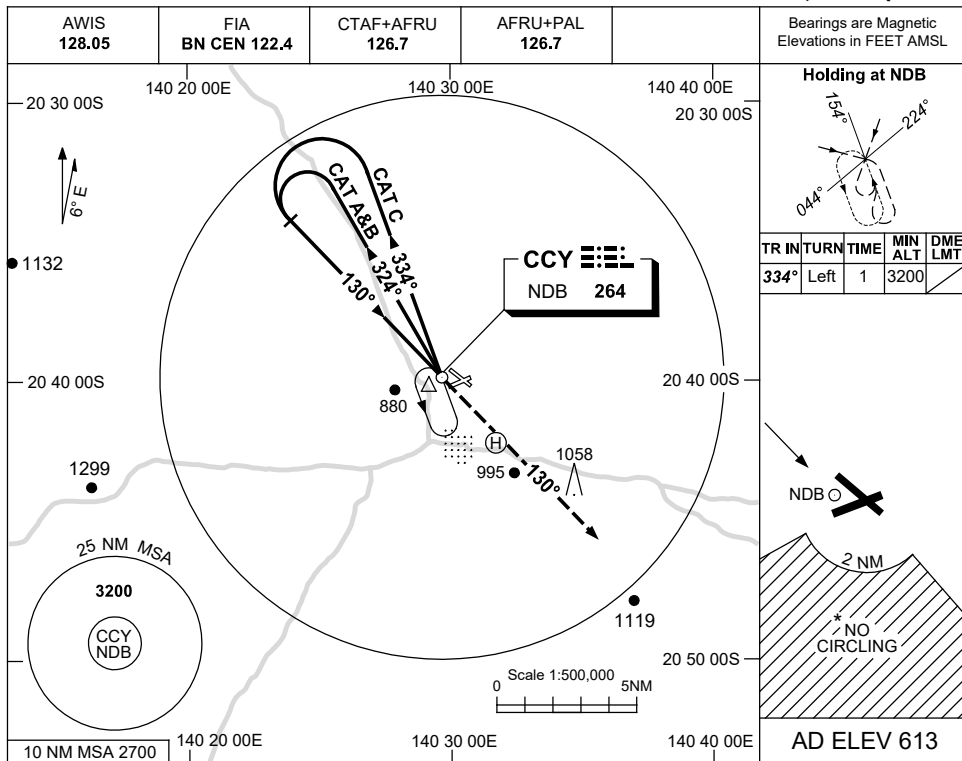
Changes: CHART TITLE, PBN SPECIFICATION BOX.

CCYGN02-171

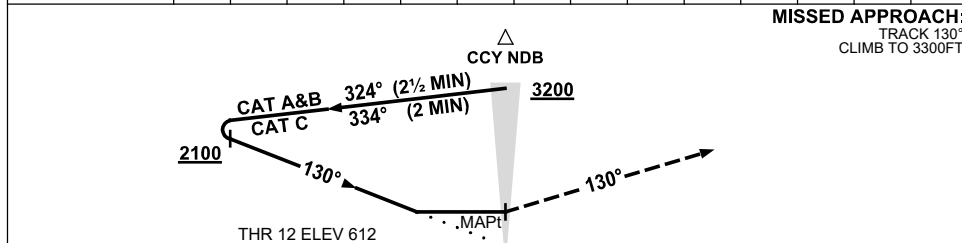
USE QNH

NDB RWY 12
CLONCURRY, QLD (YCCY)

17 JUN 2021



DME DIST	NOT APPLICABLE				
ALT					



NOTES

CATEGORY	A	B	C	D
S-I NDB	1300 (687-3.9)			NOT APPLICABLE
CIRCLING *	1570 (957-2.4)		1570 (957-4.0)	
ALTERNATE	(1457-4.4)		(1457-6.0)	

1. MAX IAS:
INITIAL : 210KT.
- * 2. NO CIRCLING IN
SECTOR SOUTH OF
RWYS 06 AND 30
BEYOND 2NM.

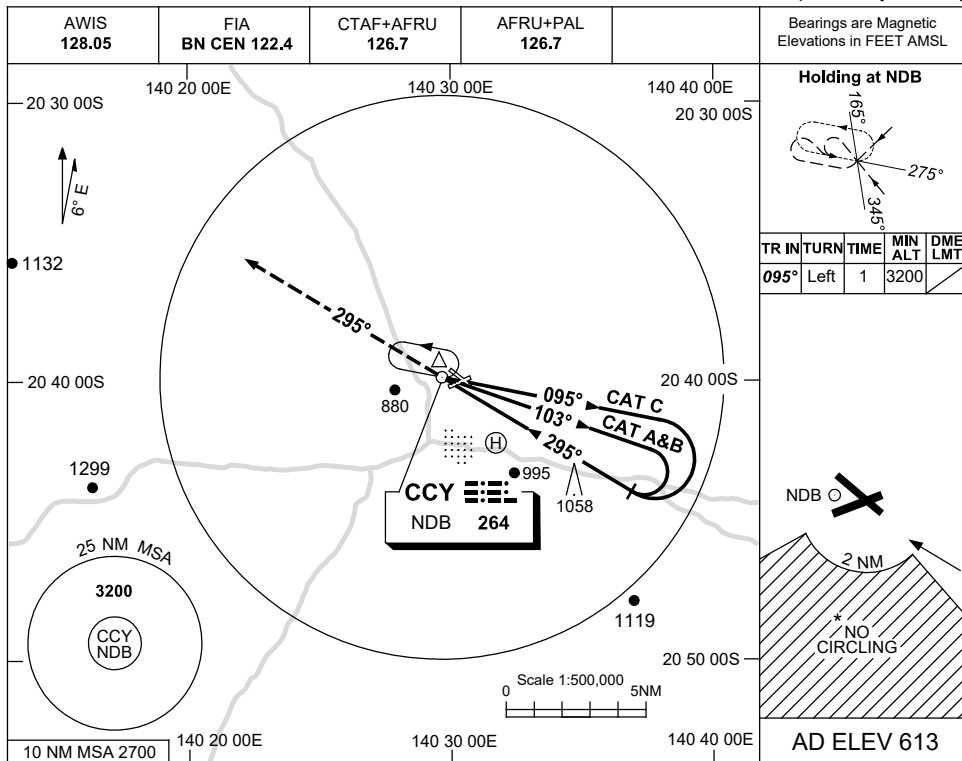
Changes: COORD FMT, Editorial.

CCYNB01-167

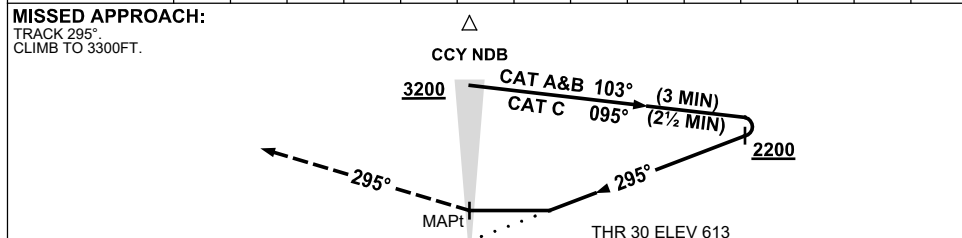
USE QNH

NDB RWY 30
CLONCURRY, QLD (YCCY)

17 JUN 2021



DME DIST	NOT APPLICABLE									
ALT										



NOTES

CATEGORY	A	B	C	D
S-I NDB	1570 (957-5.0)			NOT APPLICABLE
CIRCLING *	1570 (957-2.4)	1570 (957-4.0)		
ALTERNATE	(1457-4.4)	(1457-6.0)		

1. MAX IAS:
INITIAL : 210KT.
- *2. NO CIRCLING IN
SECTOR SOUTH OF
RWYS 06 AND 30
BEYOND 2NM.

Changes: COORD FMT, Editorial.

CCYNB02-167