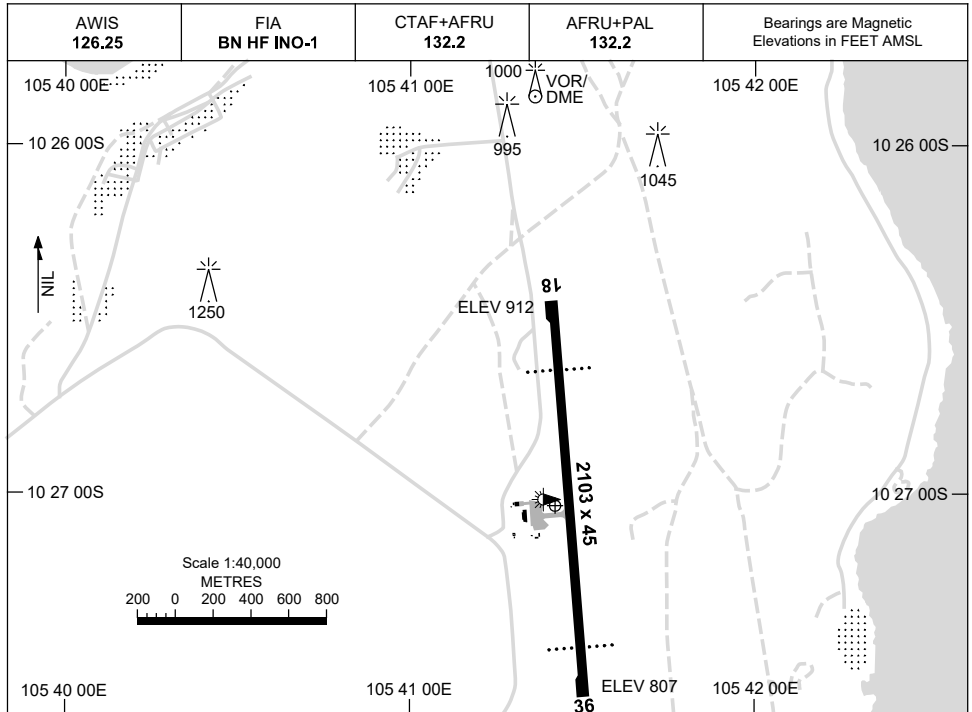


23 MAR 2023

AD ELEV 913
10 27 02S 105 41 25E

AERODROME CHART
CHRISTMAS ISLAND, AUSTRALIA (YPXM)



RWY	AERODROME LIGHTING
	TAXIWAY : BLUE EDGE RL : AFRU+PAL 132.2 , MAN ON REQ , SDBY (15 SEC) , PTBL (EMERG ONLY, 90 MIN PN)

18 ¹⁷⁵	PAPI 3.3° 53FT LIRL PTBL
³⁵⁵ 36	PAPI 3.0° 53FT LIRL PTBL

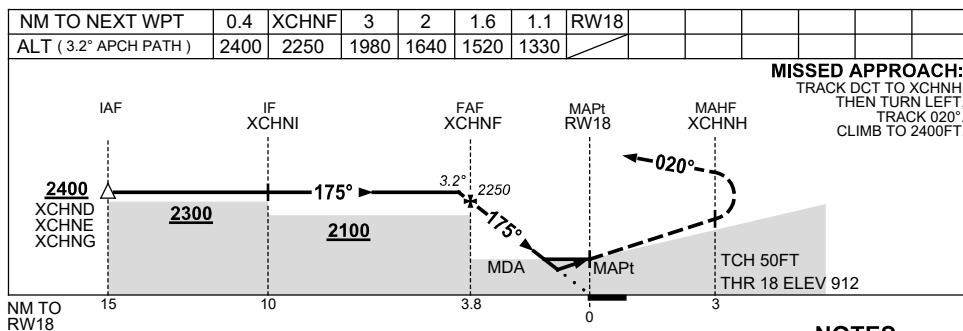
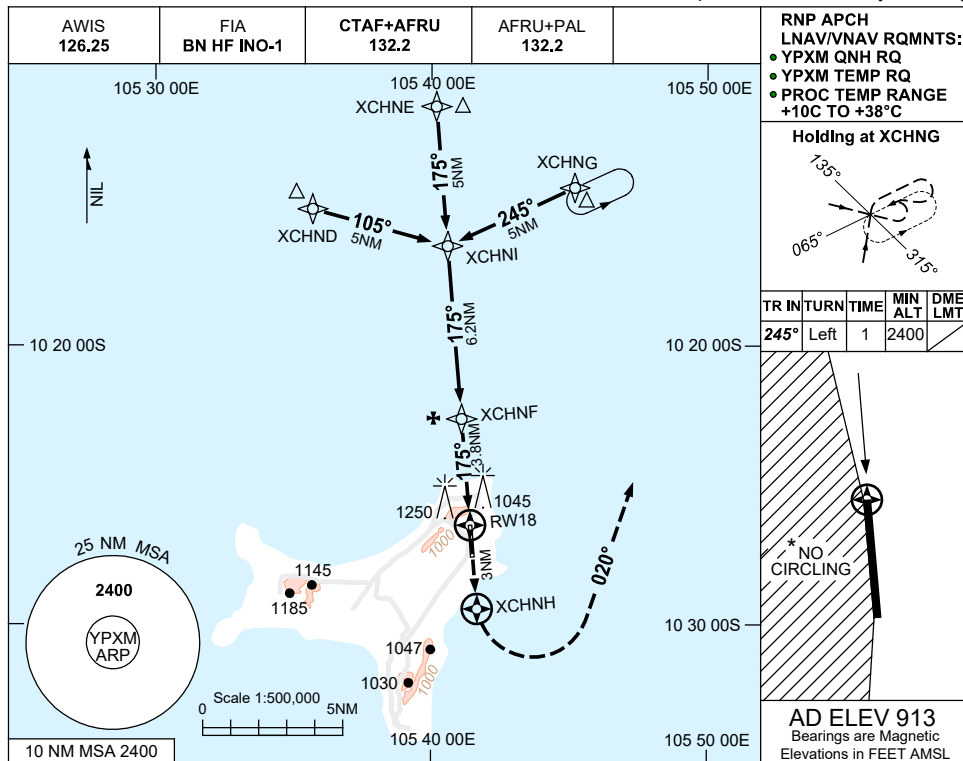
NOTES

Changes: NOTES REMOVED.

PXMAD01-174

USE QNH CHRISTMAS ISLAND, AUSTRALIA (YPXM) **RNP RWY 18**

7 SEP 2023



CATEGORY	A	B	C	D
LNAV/VNAV	1330 (418-2.2)			
LNAV	1520 (607-3.2)			
CIRCLING*	1650 (737-2.4)	1750 (837-4.0)	1750 (837-5.0)	
ALTERNATE	(1237-4.4)	(1337-6.0)	(1337-7.0)	

- NOTES**
1. MAX IAS:
INITIAL : 210KT.
 2. NO CIRCLING WEST OF RWY 18/36.
 3. COLOUR: SEE SPEC NOTICES.

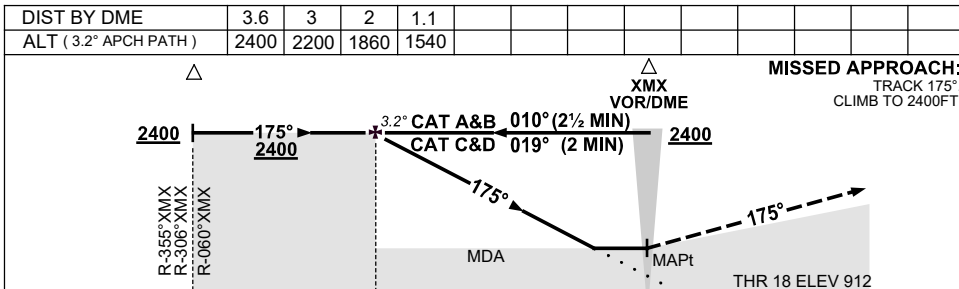
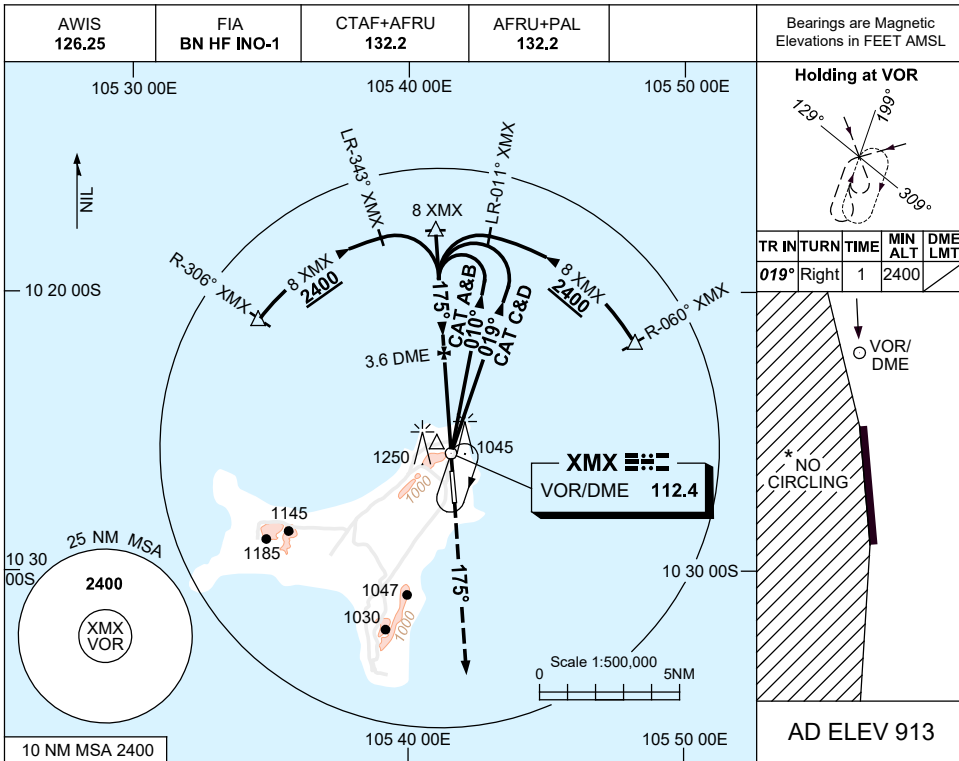
Changes: CHART TITLE, PBN SPECIFICATION BOX, Editorial.

PXMGN01-176

**USE QNH
CHRISTMAS ISLAND, AUSTRALIA (YPXM)**

VOR RWY 18

16 JUN 2022



NOTES

1. MAX IAS: INITIAL : 210KT.
- *2. NO CIRCLING WEST OF RWY 18/36.
3. COLOUR: SEE SPEC NOTICES.

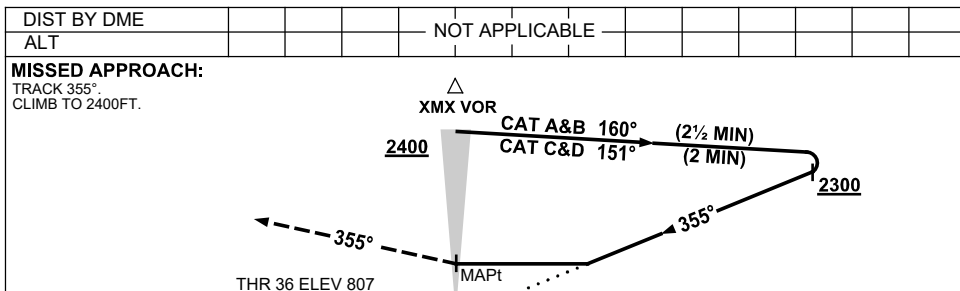
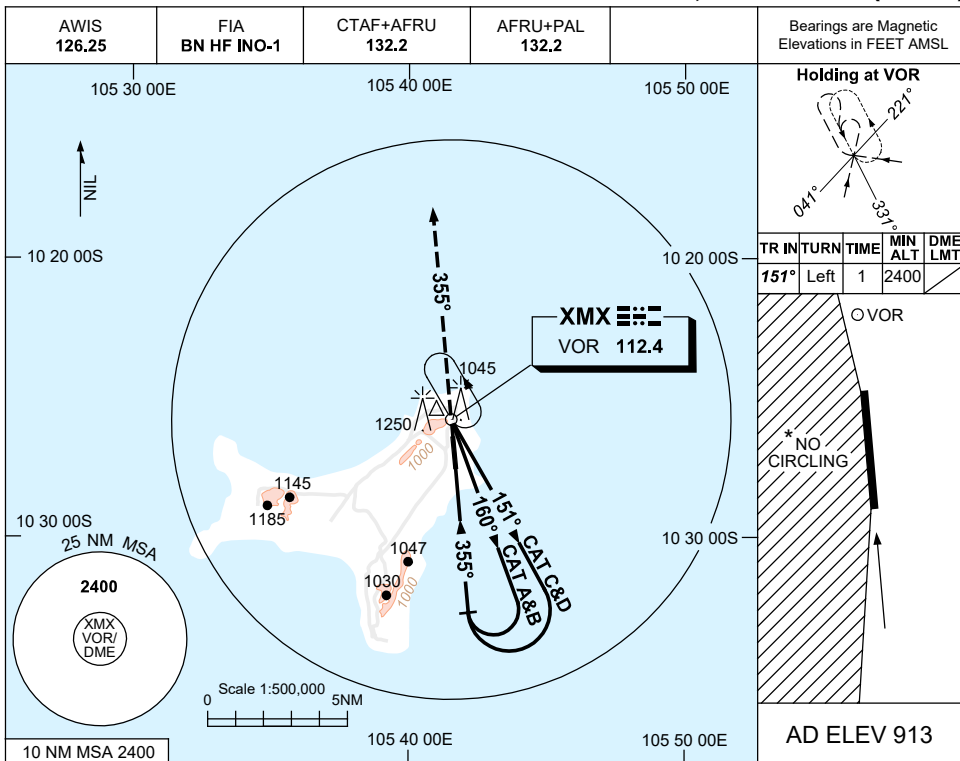
CATEGORY	A	B	C	D
S-I VOR		1540 (627-3.4)		
S-I VOR/DME		1540 (627-3.4)		
CIRCLING*	1650 (737-2.4)		1750 (837-4.0)	1750 (837-5.0)
ALTERNATE	(1237-4.4)		(1337-6.0)	(1337-7.0)

Changes: AFRU+PAL

PXMV001-171

USE QNH VOR-Y RWY 36
CHRISTMAS ISLAND, AUSTRALIA (YPXM)

16 JUN 2022



NOTES

CATEGORY	A	B	C	D
S-I VOR	1590 (783-4.5)			
CIRCLING *	1650 (737-2.4)	1750 (837-4.0)	1750 (837-5.0)	
ALTERNATE	(1237-4.4)	(1337-6.0)	(1337-7.0)	

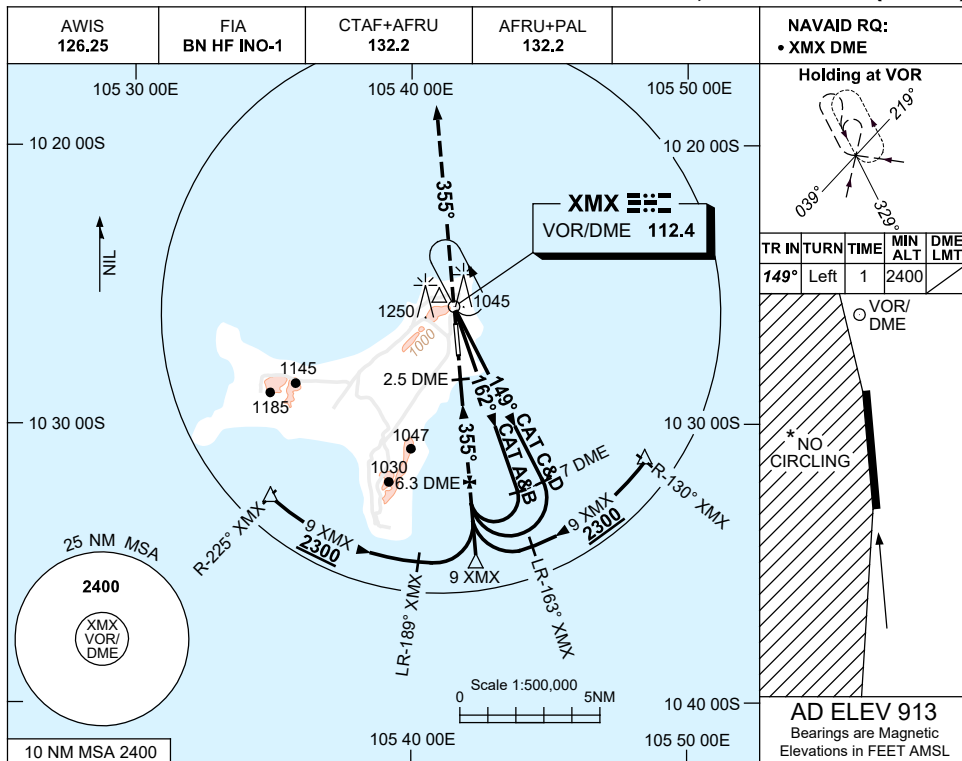
1. MAX IAS:
INITIAL :
CAT A&B 140KT.
CAT C&D 210KT.
- * 2. NO CIRCLING WEST OF RWY 18/36.
3. COLOUR: SEE SPEC NOTICES.

Changes: AFRU+PAL.

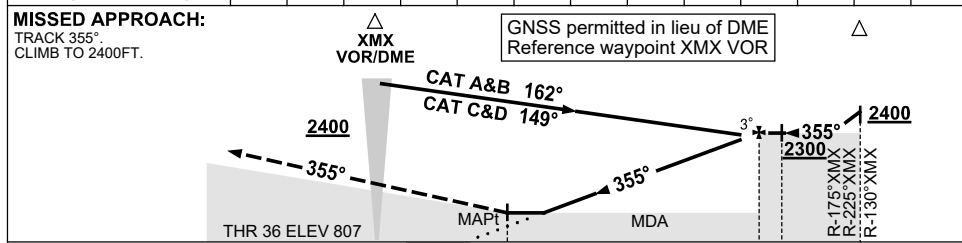
PXMV002-171

USE QNH **VOR-Z RWY 36**
CHRISTMAS ISLAND, AUSTRALIA (YPXM)

16 JUN 2022



DIST BY DME	3.5	4	5	6	6.3					
ALT (3° APCH PATH)	1400	1570	1890	2210	2300					



NM BY DME: 0, 2.5, 6.3, 9

NOTES

CATEGORY	A	B	C	D
S-I VOR/DME	1400 (593-3.4)			
CIRCLING *	1650 (737-2.4)	1750 (837-4.0)	1750 (837-5.0)	
ALTERNATE	(1237-4.4)	(1337-6.0)	(1334-7.0)	

1. MAX IAS:
 INITIAL :
 CAT A&B 140KT.
 CAT C&D 210KT.
- *2. NO CIRCLING WEST OF RWY 18/36.
3. COLOUR: SEE SPEC NOTICES.

Changes:AFRU+PAL

PXMV003-171