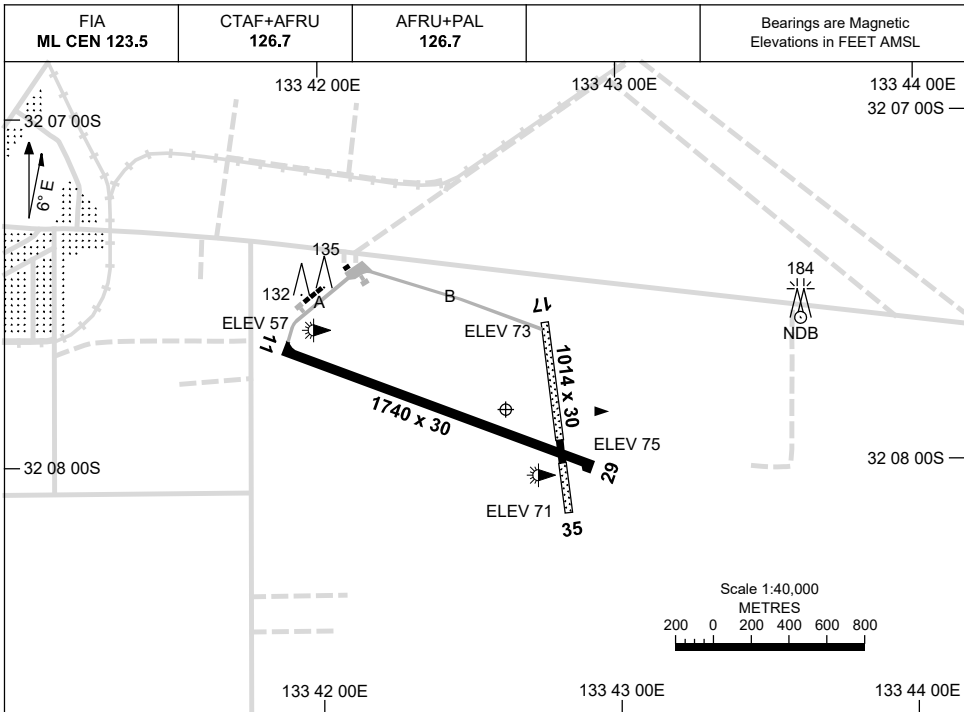


30 NOV 2023

AD ELEV 77
32 07 50S 133 42 35E

AERODROME CHART
CEDUNA, SA (YCDU)



	AERODROME LIGHTING
RWY	TAXIWAY : BLUE EDGE (TWY A ONLY) RL : AFRU+PAL 126.7 , SDBY (15 SEC) , PTBL (EMERG ONLY, 90 MIN PN)
11 <small>105</small>	LIRL PTBL
<small>285</small> 29	LIRL PTBL
17 <small>168</small>	PTBL
<small>348</small> 35	PTBL

NOTES

1. AWIS (PHONE) 08 8150 3801

Changes: AFRU+PAL

CDUAD01-177

GNSS ARRIVAL PROCEDURES CEDUNA, SA (YCDU)

21 MAR 2024

FIA ML CEN 123.5	CTAF+AFRU 126.7	AFRU+PAL 126.7		Bearings are Magnetic Elevations in FEET AMSL
---------------------	--------------------	-------------------	--	--

25 NM MSA
1800
CDU NDB
10 NM MSA 1800

REFERENCE WAYPOINT CDU NDB
AWIS (PHONE) 08 8150 3801

CDU NDB 293
AD ELEV 77

SECTOR A

NDB
1800
3°
1560
MDA
MAPt
170°
1800

MISSED APPROACH:
TURN LEFT,
TRACK 170°. CLIMB TO 1800FT.

NM TO CDU NDB	25	15	9	5	0														
CIRCLING MINIMA				A,B: 850-2.4	C: 940-4.0	D: N/A													
NM TO CDU NDB	5.8	5	4	3.1	3.0	2.9	2.8												
ALT (3° APCH PATH)	1800	1560	1240	940	920	900	850												

SECTOR B

NDB
1800
3°
1500
MDA
MAPt
050°
1800

MISSED APPROACH:
TRACK 050°. CLIMB TO 1800FT.

NM TO CDU NDB	25	15	10	5	0														
CIRCLING MINIMA				A,B: 780-2.4	C: 940-4.0	D: N/A													
NM TO CDU NDB	6	5	4	3.3	3	2.8													
ALT (3° APCH PATH)	1800	1500	1170	940	850	780													

SECTOR C

NDB
1800
1700
3°
1550
MDA
MAPt
170°
1800

MISSED APPROACH:
TRACK 170°. CLIMB TO 1800FT.

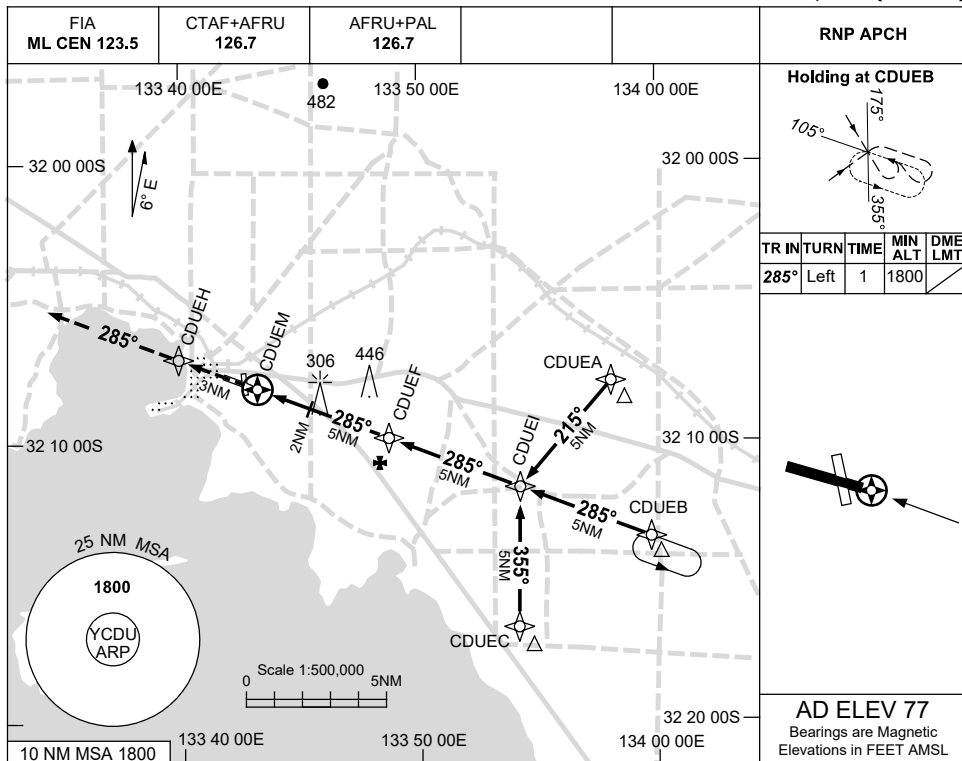
NM TO CDU NDB	25	15	8	6	5	0													
CIRCLING MINIMA				A,B: 800-2.4	C: 940-4.0	D: N/A													
NM TO CDU NDB	5.8	5	4	3.1	3	2.7													
ALT (3° APCH PATH)	1800	1550	1230	940	900	800													

Changes: SECT B CAT A, B, SECT C 6NM TO 5NM SEGMENT MINIMUM ALT, SECT BOUNDARIES. CDUDG01-178

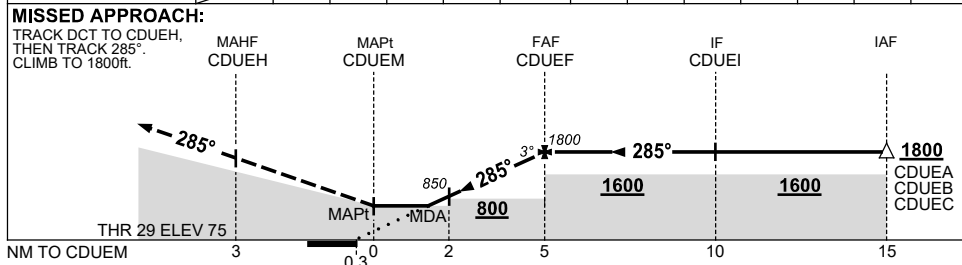
USE QNH

RNP RWY 29
CEDUNA, SA (YCDU)

21 MAR 2024



NM TO NEXT WPT	CDUEM	1.5	2	3	4	CDUEF			
ALT (3° APCH PATH)		680	850	1170	1490	1800			



NOTES

CATEGORY	A	B	C	D
LNAV	680 (603-3.4)			NOT APPLICABLE
CIRCLING	710 (633-2.4)	940 (863-4.0)		
ALTERNATE	(1133-4.4)		(1363-6.0)	

- MAX IAS: INITIAL : 210KT.
- AWIS (PHONE) 08 8150 3801.

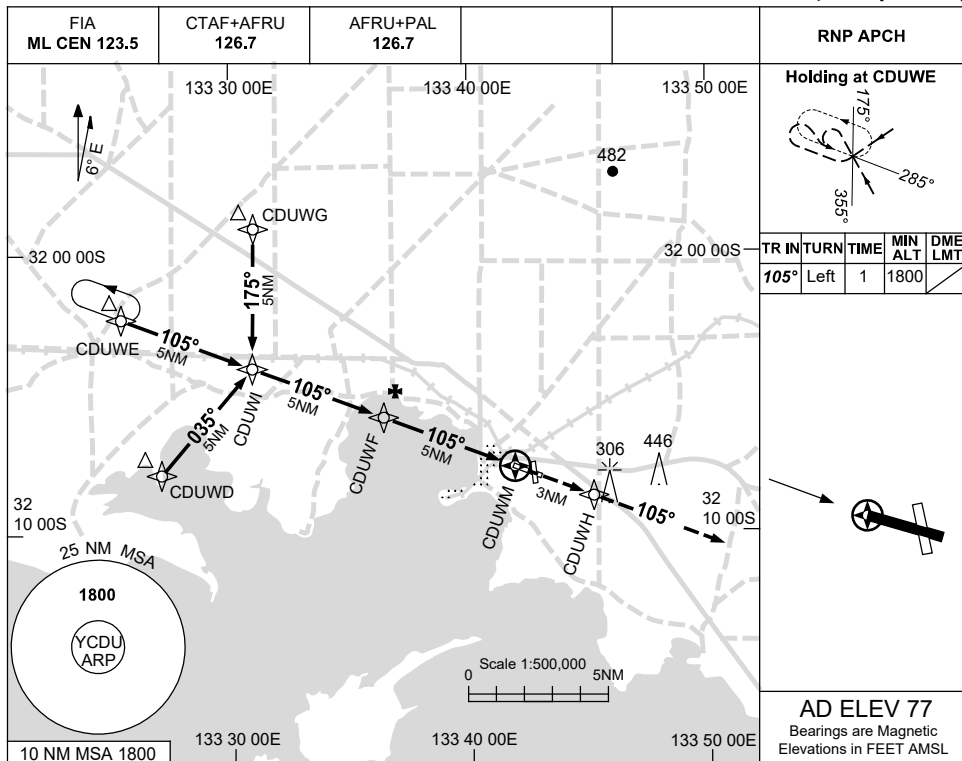
Changes: Editorial.

CDUGN01-178

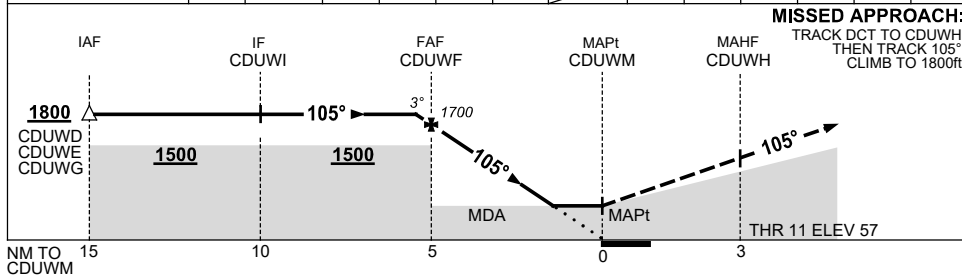
USE QNH

RNP RWY 11
CEDUNA, SA (YCDU)

21 MAR 2024



NM TO NEXT WPT	0.3	CDUWF	4	3	2	1.6	CDUWM				
ALT (3° APCH PATH)	1800	1700	1380	1060	740	610					



NOTES

CATEGORY	A	B	C	D
LNAV	610 (553-3.1)			NOT APPLICABLE
CIRCLING	710 (633-2.4)	940 (863-4.0)		
ALTERNATE	(1133-4.4)	(1363-6.0)		

- MAX IAS: INITIAL : 210KT.
- AWIS (PHONE) 08 8150 3801.

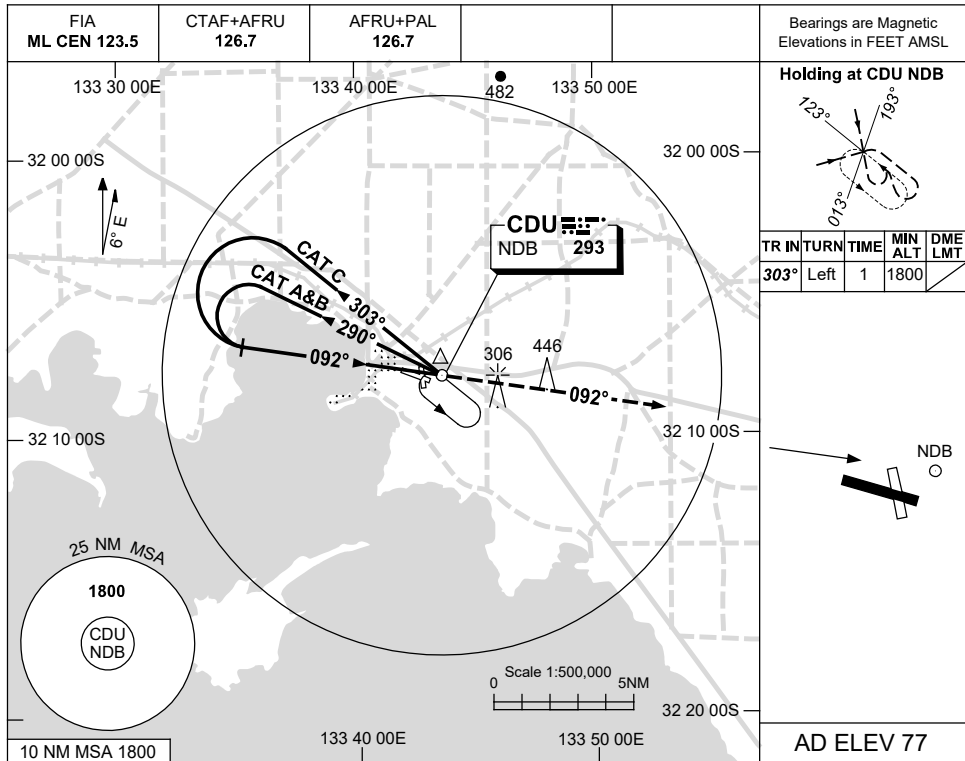
Changes: Editorial.

CDUGN02-178

USE QNH

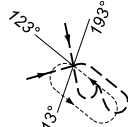
NDB RWY 11
CEDUNA, SA (YCDU)

30 NOV 2023

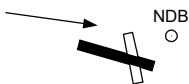


Bearings are Magnetic
Elevations in FEET AMSL

Holding at CDU NDB



TR IN	TURN	TIME	MIN ALT	DME LMT
303°	Left	1	1800	

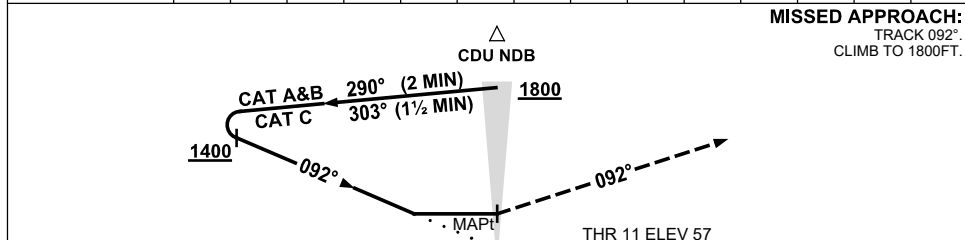


AD ELEV 77

DME DIST															
ALT															

NOT APPLICABLE

MISSED APPROACH:
TRACK 092°
CLIMB TO 1800FT.



NOTES

CATEGORY	A	B	C	D
S-I NDB	660 (603-3.4)			NOT APPLICABLE
CIRCLING	710 (633-2.4)	940 (863-4.0)		
ALTERNATE	(1133-4.4)		(1363-6.0)	

- 1. MAX IAS: INITIAL : 210KT.
- 2. AWIS (PHONE) 08 8150 3801

Changes: AFRU+PAL.

CDUNB01-177