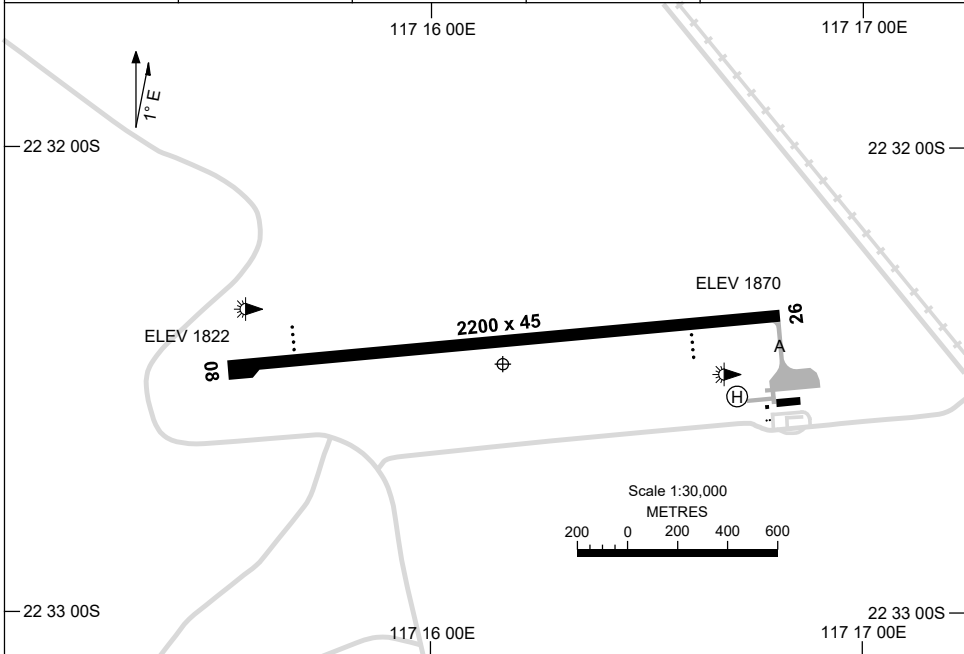


30 NOV 2023

AD ELEV 1870  
22 32 28S 117 16 10E

**AERODROME CHART**  
**BOOLGEEDA, WA (YBGD)**

AWIS 122.475	FIA ML CEN 125.7	CTAF+AFRU 126.7	AFRU+PAL 126.7	Bearings are Magnetic Elevations in FEET AMSL
-----------------	---------------------	--------------------	-------------------	--



<b>RWY</b>	<b>AERODROME LIGHTING</b>
	TAXIWAY : BLUE EDGE RL : AFRU+PAL 126.7 , SDBY (10 SEC)
<b>08</b> <small>084</small>	PAPI 3.0° 49FT LIRL PTBL
<small>264</small> <b>26</b>	PAPI 3.0° 49FT LIRL PTBL

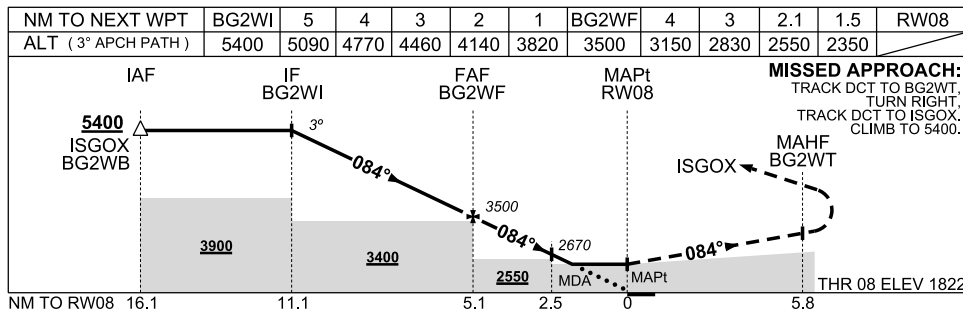
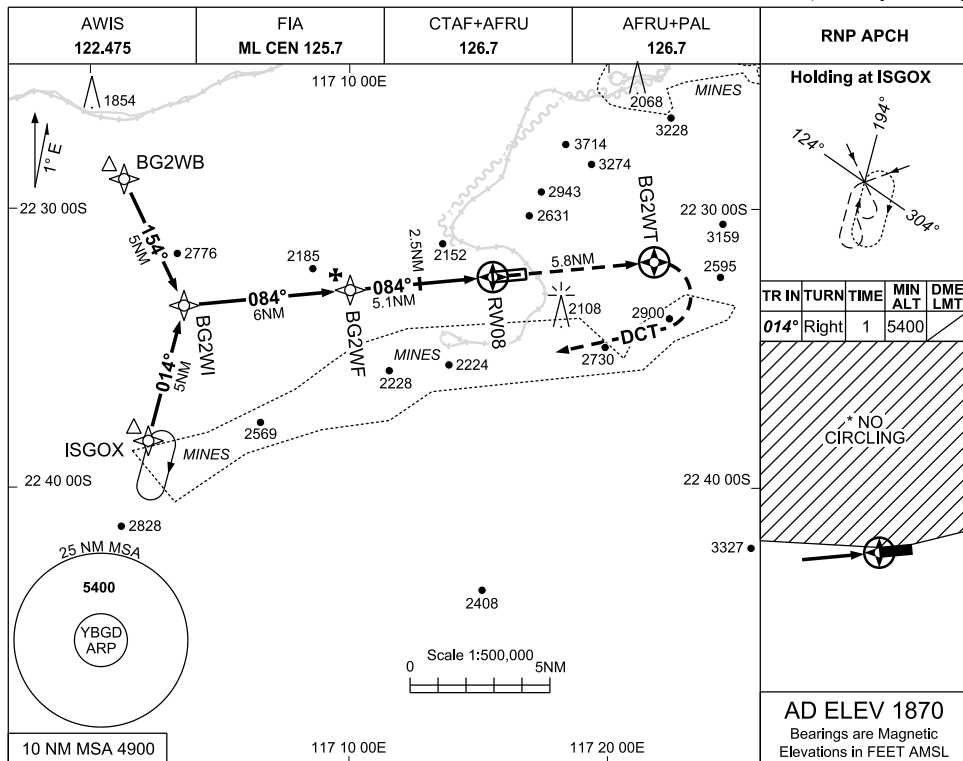
**NOTES**

- FIA FREQ AVBL IN CIRCUIT AREA.
- RWY 08/26 PTBL LIGHTING AVBL FOR EMERG USE ONLY, 2HR PN RQ.

21 MAR 2024

USE QNH

RNP RWY 08  
**BOOLGEEDA, WA (YBGD)**



**NOTES**

1. MAX IAS 210KT
- #2. MIN MAP GRADIENT 3.4% TO BG2WT, THEN 2.5%
- \*3. NO CIRCLING NORTH OF RWY 08/26
4. CAUTION: YBGD IN CLOSE PROXIMITY TO YEWA APPROACH PROCEDURES, YEWA LOCATED 22NM WNW OF YBGD.

CATEGORY	A	B	C	D
LNAV (2.5%)		2550 (728-4.2)		
# LNAV (3.4%)		2350 (528-3.0)		
* CIRCLING	2550(680-2.0)	2990(1120-2.4)	3390(1520-4.0)	3510(1640-5.0)
ALTERNATE	(1180-4.0)	(1620-4.4)	(2020-6.0)	(2140-7.0)

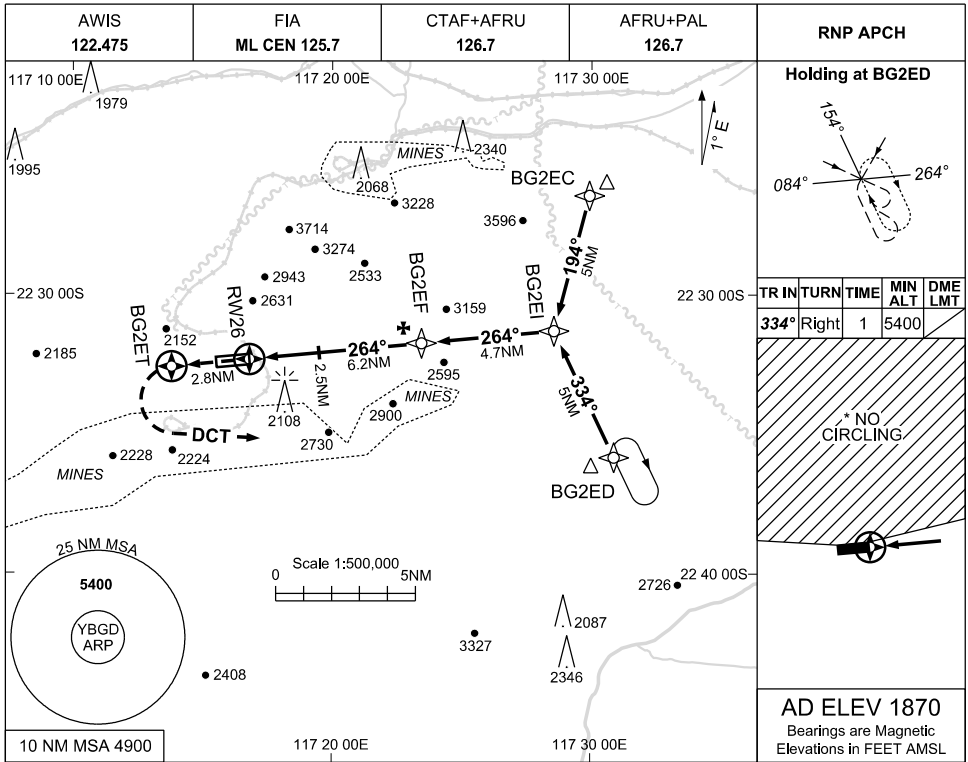
Changes: WPT EGIDA RENAMED ISGOX

BGDGN01-178

30 NOV 2023

USE QNH

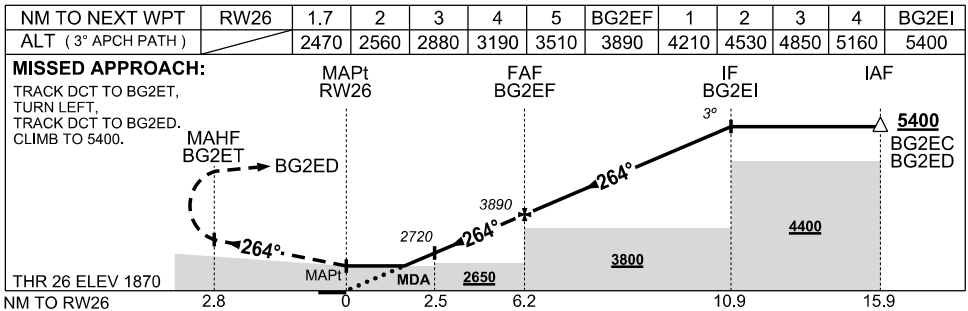
RNP RWY 26  
**BOOLGEEDA, WA (YBGD)**



TR	INTURN	TIME	MIN ALT	DME LMT
334°	Right	1	5400	

\* NO CIRCLING

**AD ELEV 1870**  
 Bearings are Magnetic  
 Elevations in FEET AMSL



**NOTES**

CATEGORY	A	B	C	D
LNAV	2470 (600-3.4)			
* CIRCLING	2550(680-2.0)	2990(1120-2.4)	3390(1520-4.0)	3510(1640-5.0)
ALTERNATE	(1180-4.0)	(1620-4.4)	(2020-6.0)	(2140-7.0)

- MAX IAS 210KT
- NO CIRCLING NORTH OF RWY 08/26
- CAUTION: YBGD IN CLOSE PROXIMITY TO YEWA APPROACH PROCEDURES. YEWA LOCATED 22NM WNW OF YBGD.

Changes: CHART TITLE, EDITORIAL

BGDGN02-177