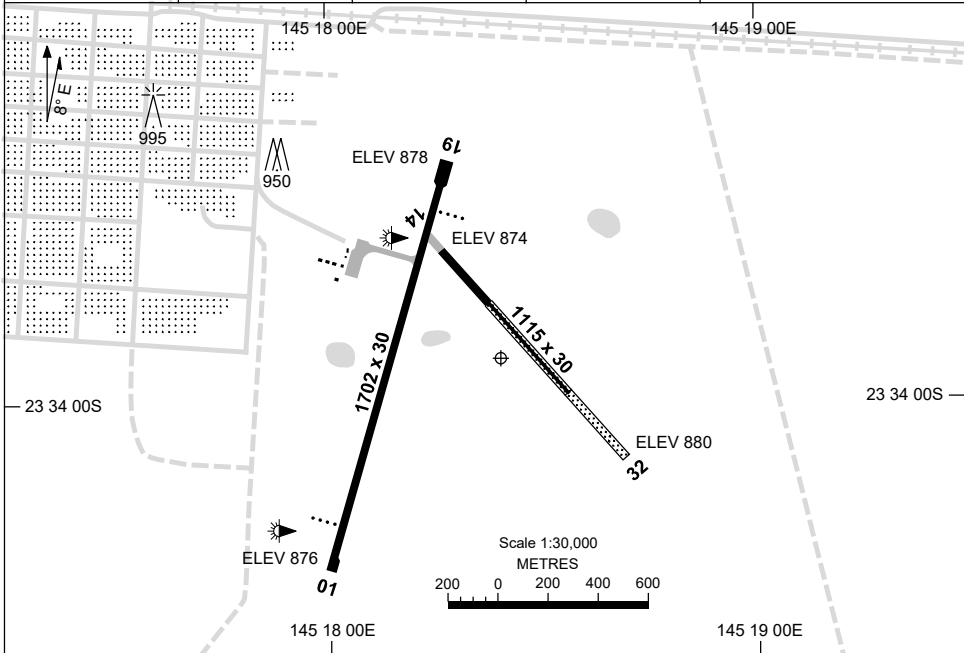


21 MAR 2024

AD ELEV 880  
23 33 55S 145 18 24E

**AERODROME CHART**  
**BARCALDINE, QLD (YBAR)**

FIA BN CEN 122.1	CTAF+AFRU 126.7	PAL 119.6	Bearings are Magnetic Elevations in FEET AMSL
---------------------	--------------------	--------------	--



RWY		AERODROME LIGHTING
TAXIWAY : BLUE EDGE		
RL : PAL 119.6 , PTBL (60 MIN PN) , SDBY (10 SEC)		
<b>01</b> <sup>009</sup>		PAPI 3.0° 29FT LIRL
<sup>189</sup> <b>19</b>		PAPI 3.0° 29FT LIRL
<b>14</b> <sup>131</sup>		NIL
<sup>311</sup> <b>32</b>		NIL

**NOTES**

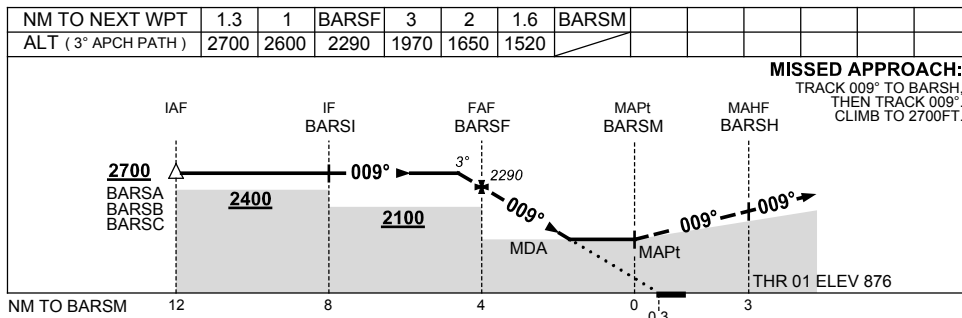
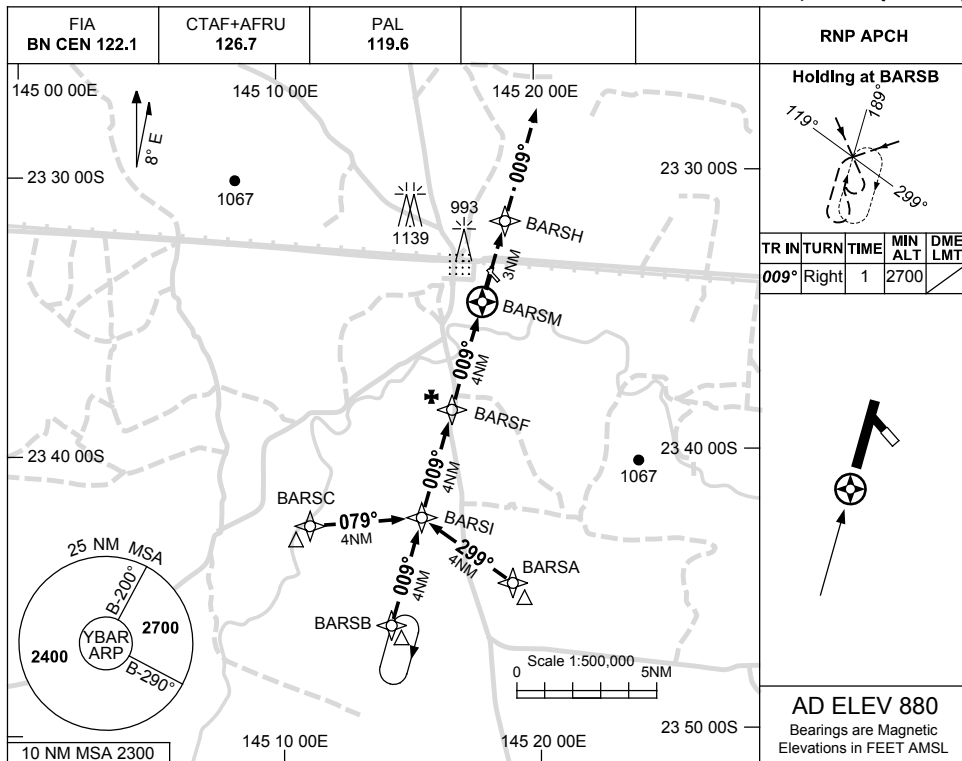
1. BN CEN 122.1 AVBL ABV 3000ft.

USE QNH

RNP RWY 01

30 NOV 2023

BARCALDINE, QLD (YBAR)



**NOTES**

1. MAX IAS:  
INITIAL : 210KT.

CATEGORY	A	B	C	D
LNAV	1400 (520-2.9)			NOT APPLICABLE
CIRCLING	1480 (600-2.4)		1650 (770-4.0)	
ALTERNATE	(1100-4.4)		(1270-6.0)	

Changes: NOTE 2 DELETED, Editorial.

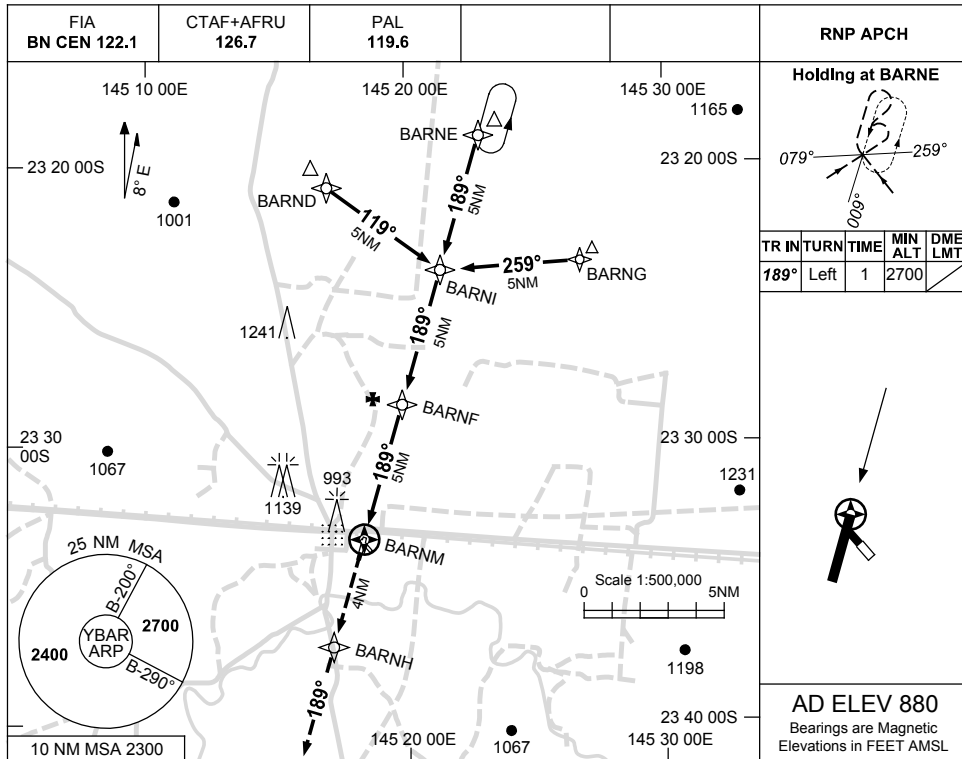
BARGN01-177

USE QNH

RNP RWY 19

30 NOV 2023

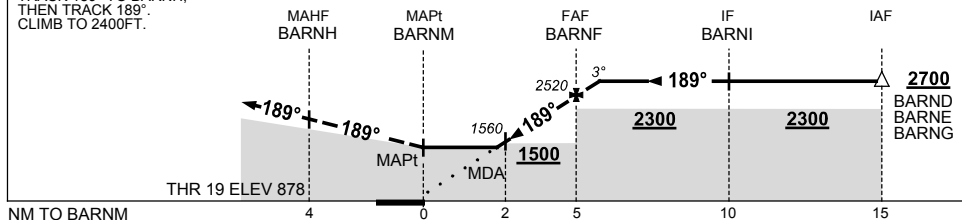
BARCALDINE, QLD (YBAR)



NM TO NEXT WPT	BARNM	1.4	2	3	4	BARNF	0.6						
ALT (3° APCH PATH)		1380	1560	1880	2200	2520	2700						

**MISSED APPROACH:**

TRACK 189° TO BARNH, THEN TRACK 189°. CLIMB TO 2400FT.



**NOTES**

1. MAX IAS: INITIAL : 210KT.

CATEGORY	A	B	C	D
LNAV	1380 (500-2.8)			NOT APPLICABLE
CIRCLING	1480 (600-2.4)	1650 (770-4.0)		
ALTERNATE	(1100-4.4)		(1270-6.0)	

Changes: DIST-ALT TABLE, NOTE 2 DELETED, Editorial.

BARGN02-177