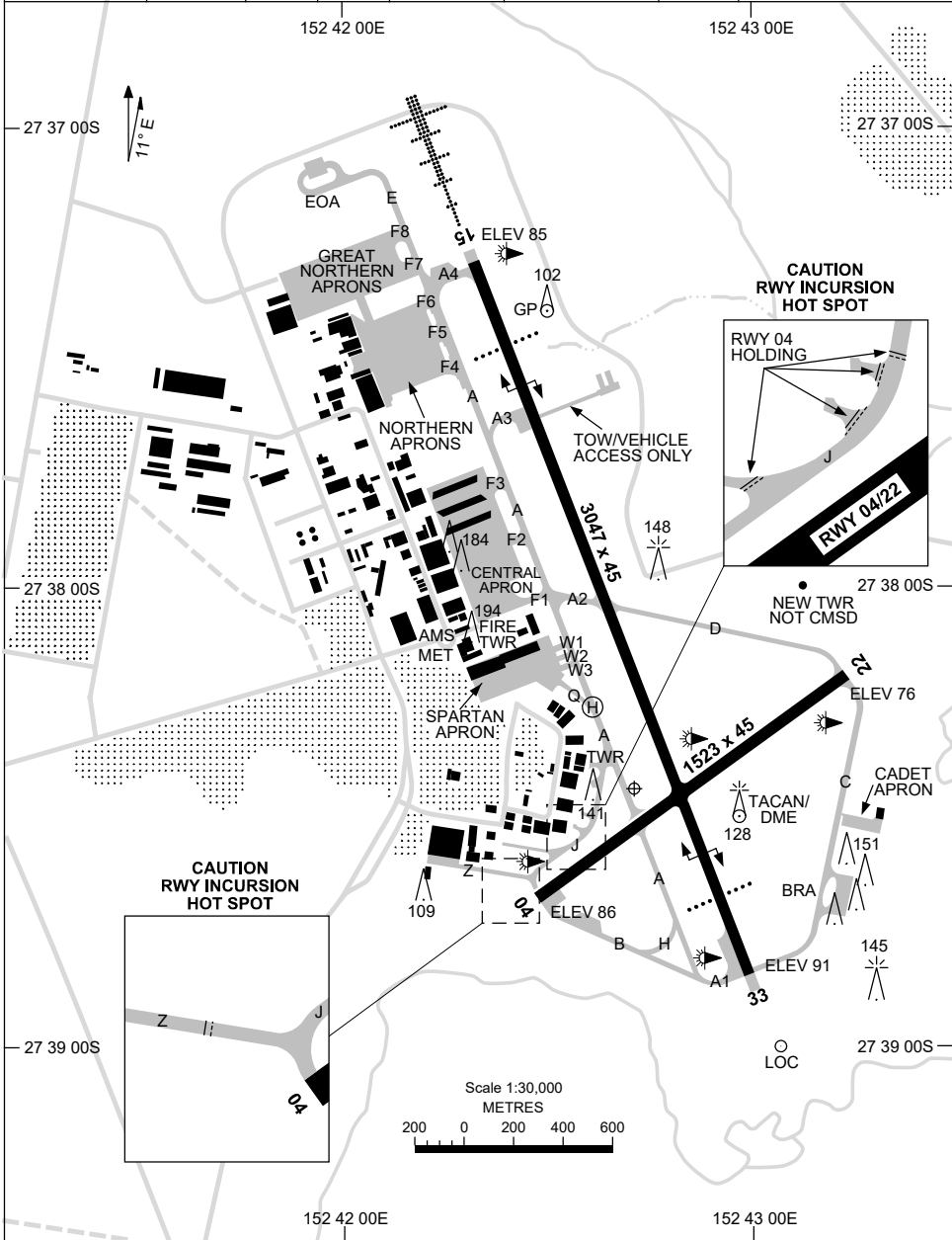


21 MAY 2020

27 38 26S 152 42 43E

AMBERLEY, QLD (YAMB)

ATIS 123.3 316.2	AWIS (AH) 316.2	ACD 134.6	SMC 129.35	TWR 118.3 264.6	CTAF+AFRU (AH) AFRU+PAL 118.3	FIA (AH) 121.2	Bearings are Magnetic Elevations in FEET AMSL
---------------------	--------------------	--------------	---------------	--------------------	-------------------------------------	-------------------	--



Changes: FROM SUP H152/19.

AMBAD01-163

15 JUN 2023

AD ELEV 91
27 38 26S 152 42 43E

AERODROME CHART - Page 2
AMBERLEY, QLD (YAMB)

ATIS 123.3 316.2	AWIS (AH) 316.2	ACD 134.6	SMC 129.35	TWR 118.3 264.6	CTAF+AFRU (AH) AFRU+PAL 118.3	FIA (AH) 121.2	Bearings are Magnetic Elevations in FEET AMSL
AERODROME LIGHTING							
RWY	TAXIWAYS : GREEN CENTRELINE , BLUE EDGE ON J. NIL ON B, H, Q RL : MAN , AFRU+PAL 118.3 , SDBY (7 SEC) , PTBL						
04 ⁰⁴³ 223 22	MIRL MIRL						
15 ¹⁴⁸ 328 33	PAPI 3.0° 57FT HIRL HIAL - CAT I SFL PAPI 3.0° 57FT HIRL						
NOTES							

Changes: NOTES.

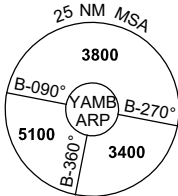
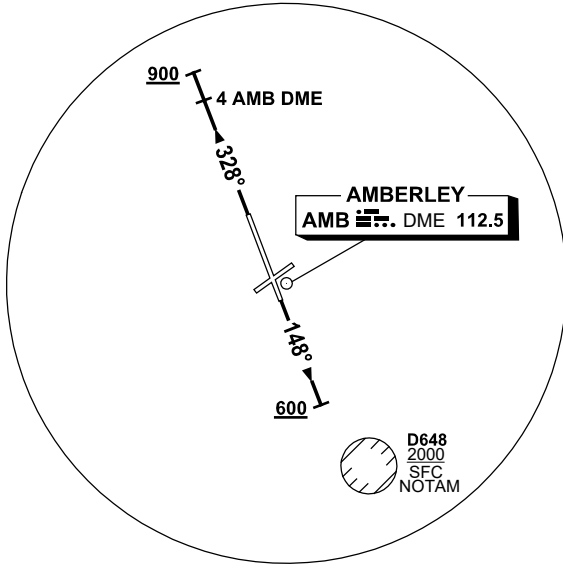
AMBAD02-175

**STANDARD INSTRUMENT DEPARTURES (SID)
AMBERLEY THREE DEPARTURE (RADAR) - RWY 15 & 33
AMBERLEY, QLD (YAMB)**

21 MAR 2024

ATIS 123.3 316.2	AWIS (AH) 316.2	ACD 134.6	SMC 129.35	TWR 118.3 264.6	APP 126.2 335.8	CTAF+AFRU (AH) AFRU+PAL 118.3	FIA (AH) 121.2	Bearings are Magnetic Elevations in FEET AMSL
---------------------	--------------------	--------------	---------------	--------------------	--------------------	-------------------------------------	-------------------	--

NOT TO SCALE



D648
2000
SFC
NOTAM

10 NM MSA 3400

AMBERLEY THREE DEPARTURE

RWY 15

- GRAD 4.3% to 2700ft, then 3.3%
- Track 148°
- AT 600ft BUT NOT BEFORE DER, turn to assigned heading or track (NO LEFT TURN BLW 1600ft)

RWY 33

- GRAD 3.9% to 900ft, then 3.3%
- Track 328°
- AT or ABV 900ft BUT NOT BEFORE 4 AMB DME, turn to assigned heading or track

COMMUNICATIONS FAILURE PROCEDURE

On recognition of communication failure

- Squawk 7600
- Maintain last assigned vector for two minutes, and
- CLIMB IF NECESSARY TO MINIMUM SAFE ALTITUDE, to maintain terrain clearance, then
- proceed in accordance with the latest ATC route clearance acknowledged.

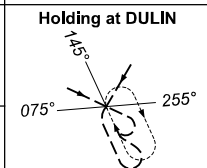
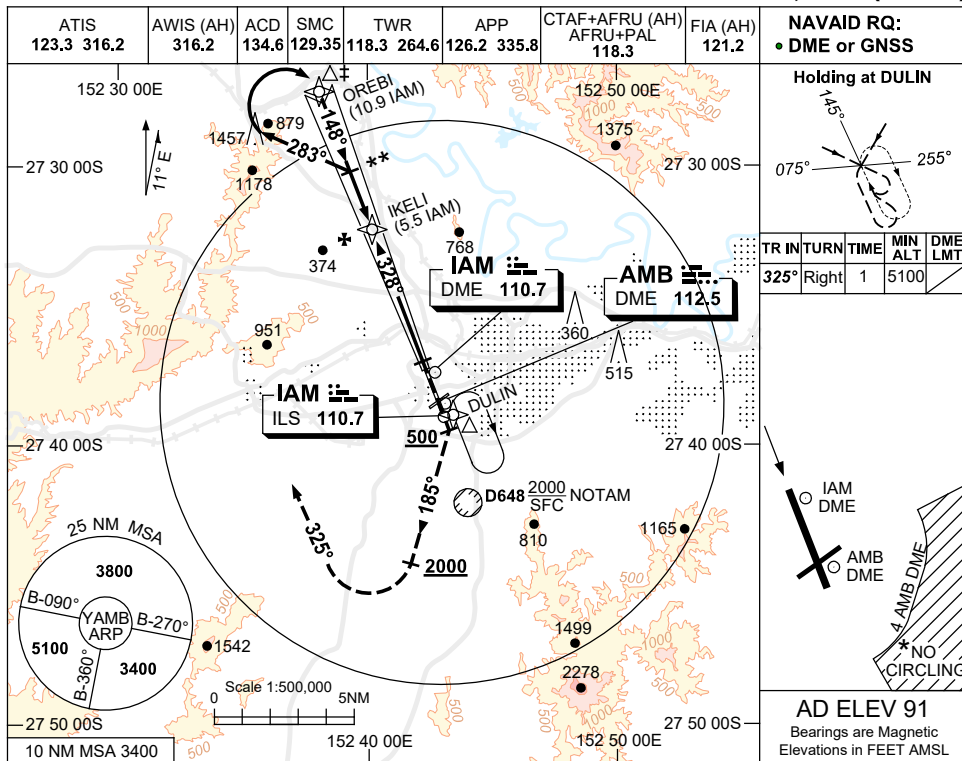
Changes: DME FREQUENCY, Editorial.

AMBDP01-178

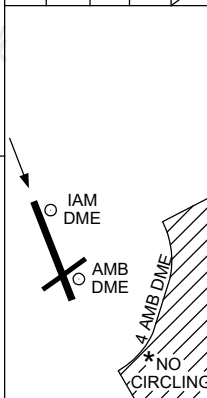
USE QNH

ILS-Z RWY 15
AMBERLEY, QLD (YAMB)

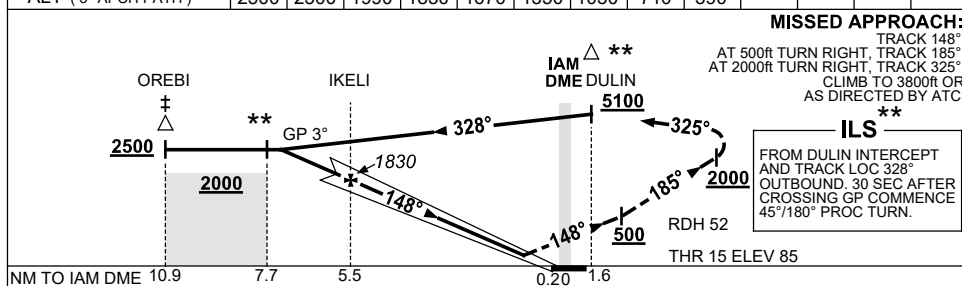
21 MAR 2024



TR	IN	TURN	TIME	MIN ALT	DME LMT
325°	Right	1	5100		



NM TO IAM DME	7.6	7	6	5.5	5	4	3	2	1				
ALT (3° APCH PATH)	2500	2300	1990	1830	1670	1350	1030	710	390				



MISSED APPROACH:
 TRACK 148°
 AT 500ft TURN RIGHT, TRACK 185°
 AT 2000ft TURN RIGHT, TRACK 325°
 CLIMB TO 3800ft OR AS DIRECTED BY ATC.

ILS
 FROM DULIN INTERCEPT AND TRACK LOC 328°
 OUTBOUND: 30 SEC AFTER CROSSING GP COMMENCE 45°/180° PROC TURN.

NM TO IAM DME	10.9	7.7	5.5	0.20	1.6
NM TO THR 15	10.7	7.5	5.3	0	

- NOTES**
- ACFT MAY BE RADAR VECTORED TO 10.9 IAM DME IAF.
 - NO CIRCLING SE OF RWY 15/33 AND RWY 04/22 BEYOND 4 AMB DME.
 - COLOUR : SEE SPEC NOTICES.

CATEGORY	A	B	C	D
S-I ILS		390 (305) 0.8		
CIRCLING*	860 (769-2.4)	1090 (999-4.0)	1550 (1459-5.0)	
ALTERNATE	(1269-4.4)	(1499-6.0)	(1959-7.0)	

Changes: DME FREQ, VIS, OM/MM REMOVED, FAF WPT, DME REFERENCE, Editorial.

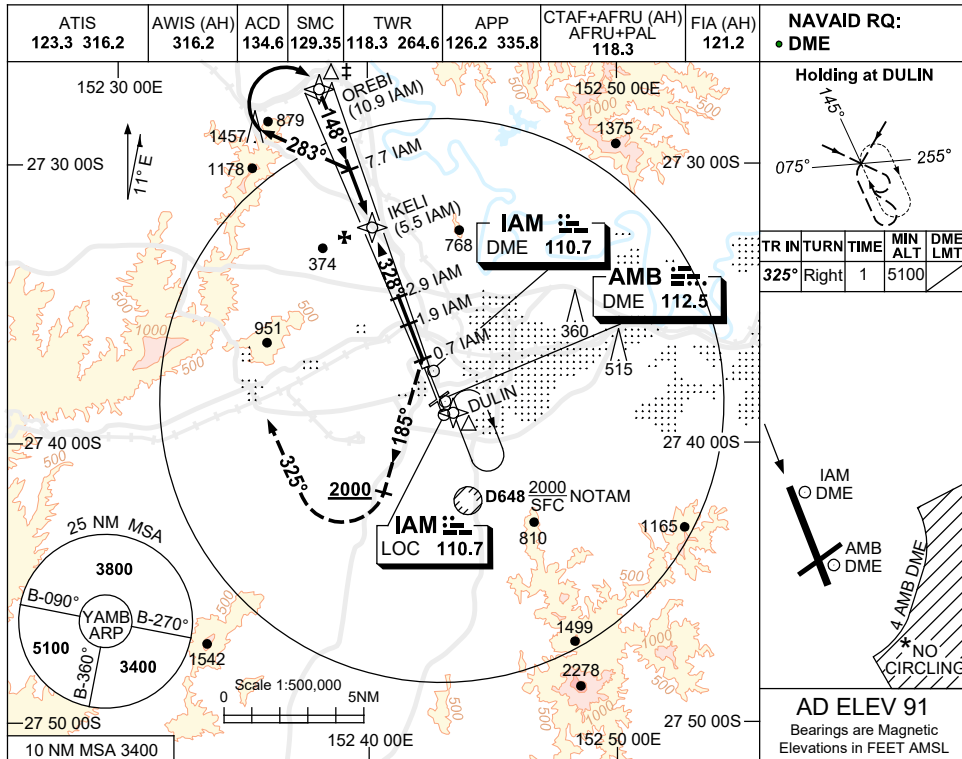
AMBII01-178

USE QNH

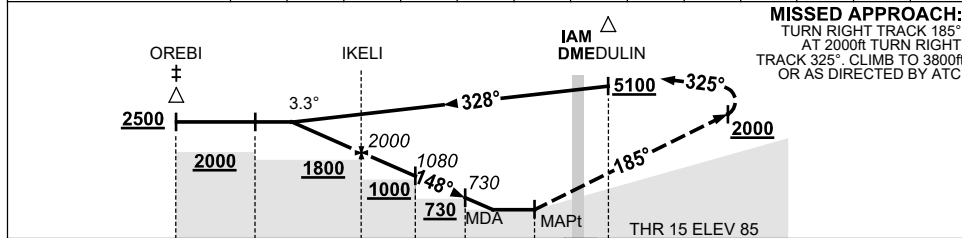
LOC-Z RWY 15

21 MAR 2024

AMBERLEY, QLD (YAMB)



NM TO IAM DME	6.9	6	5.5	5	4	2.9	1.9	1.7				
ALT (3.3° APCH PATH)	2500	2170	2000	1820	1470	1080	730	650				



NM TO IAM DME	10.9	7.7	5.5	2.9	1.9	0.7	0.2	1.6	
NM TO THR 15	10.7	7.5	5.3	2.7	1.7	0.5	0		

CATEGORY	A	B	C	D
S-I LOC/DME	650 (559-2.0)			
CIRCLING *	860 (769-2.4)		1090 (999-4.0) 1550 (1459-5.0)	
ALTERNATE	(1269-4.4)		(1499-6.0) (1959-7.0)	

- NOTES**
- ACFT MAY BE RADAR VECTORED TO 10.9 IAM DME IAF.
 - APCH PATH ANGLE DOES NOT COINCIDE WITH PAPI ON GLIDE SLOPE INDICATION.
 - NO CIRCLING SE OF RWY 15/33 AND RWY 04/22 BEYOND 4 AMB DME.
 - COLOUR : SEE SPEC NOTICES.

Changes: MINIMA, DME FREQ, VIS, OM/MM REMOVED, FAF WPT, DME REFERENCE, Editorial. AMBLZ01-178