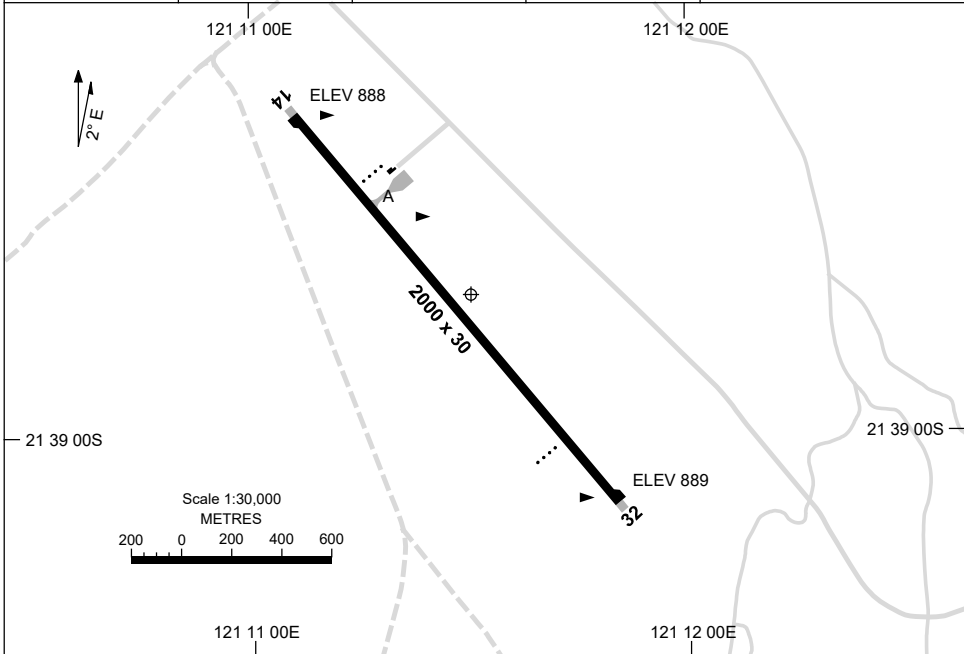


23 MAR 2023

AD ELEV 889
21 38 43S 121 11 30E

AERODROME CHART
WOODIE WOODIE, WA (YWWI)

FIA ML CEN 134.5	CTAF 126.7	UNICOM 128.9		Bearings are Magnetic Elevations in FEET AMSL
---------------------	---------------	-----------------	--	--



RWY	AERODROME LIGHTING	
	RL : PTBL (EMERG ONLY, 90 MIN PN TO ARO)	
14 ¹³⁹	PAPI 3.0° 48FT PTBL	
³¹⁹ 32	PAPI 3.0° 48FT PTBL	

NOTES

1. FIA FREQ 134.5 NOT AVBL ON GROUND.
2. PAPI - MANUAL ACTIVATION. 30 MIN PN (ARO 08 9460 7037).

Changes: AD ELEV, THR ELEV

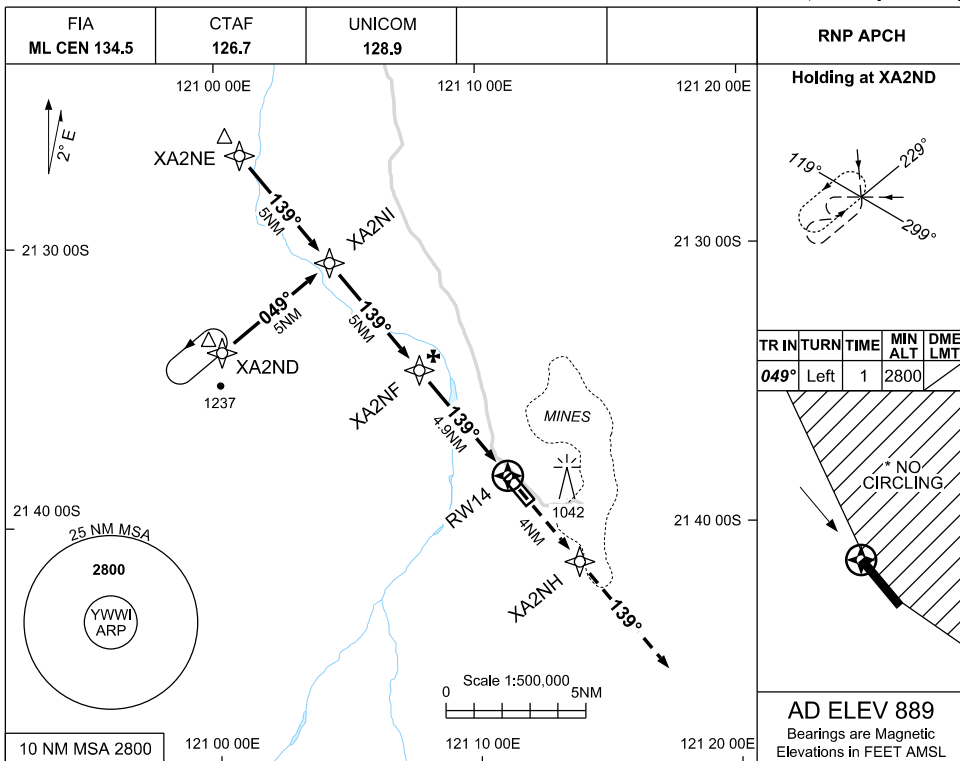
WWIAD01-174

USE QNH

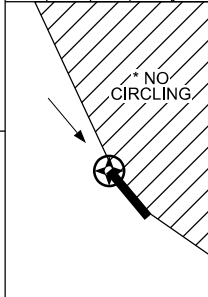
RNP RWY 14

30 NOV 2023

WOODIE WOODIE, WA (YWWI)



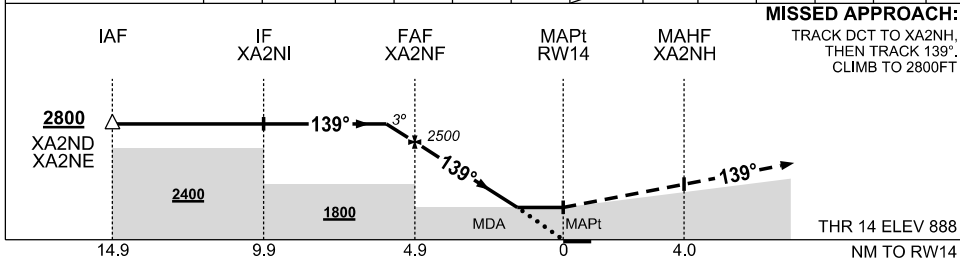
TR	IN	TURN	TIME	MIN ALT	DME LMT
049°	Left	1		2800	



AD ELEV 889

Bearings are Magnetic Elevations in FEET AMSL

NM TO NEXT WPT	1	XA2NF	4	3	2	1.5	RW14						
ALT (3° APCH PATH)	2800	2500	2210	1890	1570	1420							



MISSED APPROACH:
TRACK DCT to XA2NH,
THEN TRACK 139°.
CLIMB TO 2800FT

THR 14 ELEV 888
NM TO RW14

NOTES

- *1. NO CIRCLING EAST OF RWY 14/32
- 2. CAUTION: YCNF PROCS ADJACENT TO E

CATEGORY	A	B	C	D
LNAV	1420 (531-3.0)			NOT APPLICABLE
CIRCLING *	1610 (721-2.4)		1770 (881-4.0)	
ALTERNATE	(1221-4.4)		(1381-6.0)	

Changes: CHART TITLE, EDITORIAL

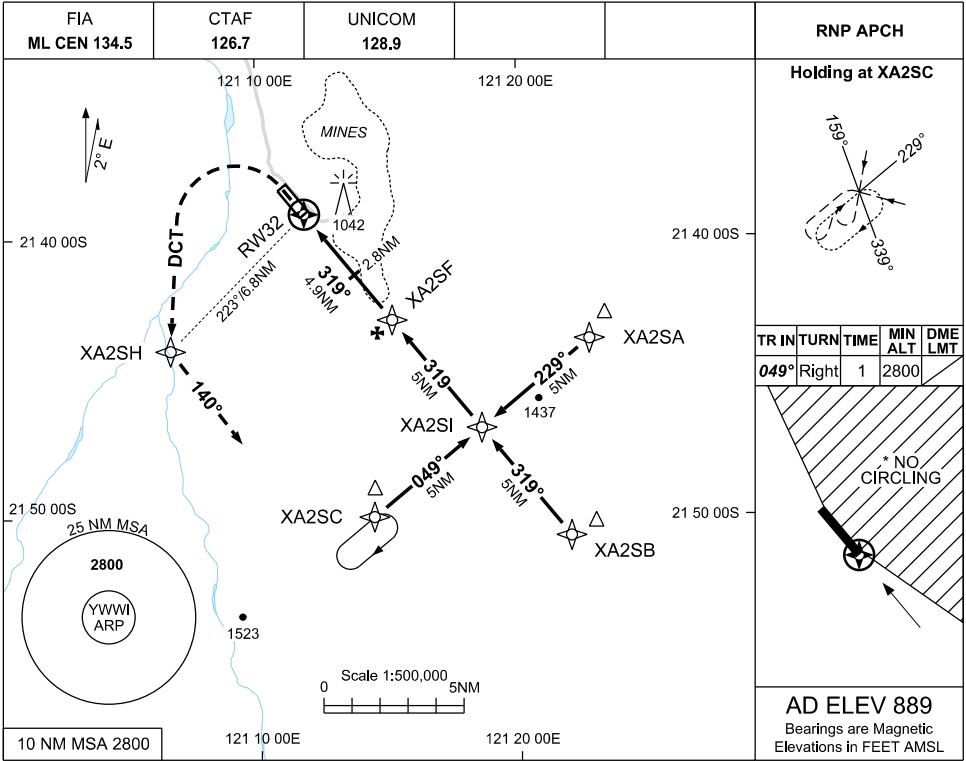
WWIGN01-177



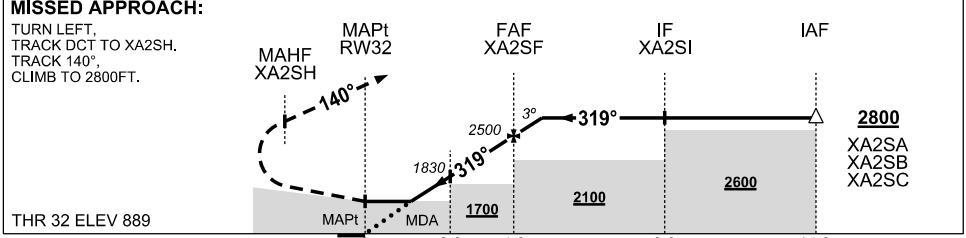
30 NOV 2023

USE QNH

RNP RWY 32
WOODIE WOODIE, WA (YWWI)



NM TO NEXT WPT	RW32	1.6	2	3	4	XA2SF	1			
ALT (3° APCH PATH)		1440	1570	1890	2210	2500	2800			



NOTES

CATEGORY	A	B	C	D
LNAV	1440 (551-3.1)			NOT APPLICABLE
CIRCLING *	1610 (721-2.4)		1770 (881-4.0)	
ALTERNATE	(1221-4.4)		(1381-6.0)	

- MAX IAS:
MAP TURN 210KT
- NO CIRCLING
EAST OF RWY
14/32
- CAUTION: YCNF
PROCS ADJACENT
TO E

Changes: CHART TITLE, EDITORIAL

WWIGN02-177

