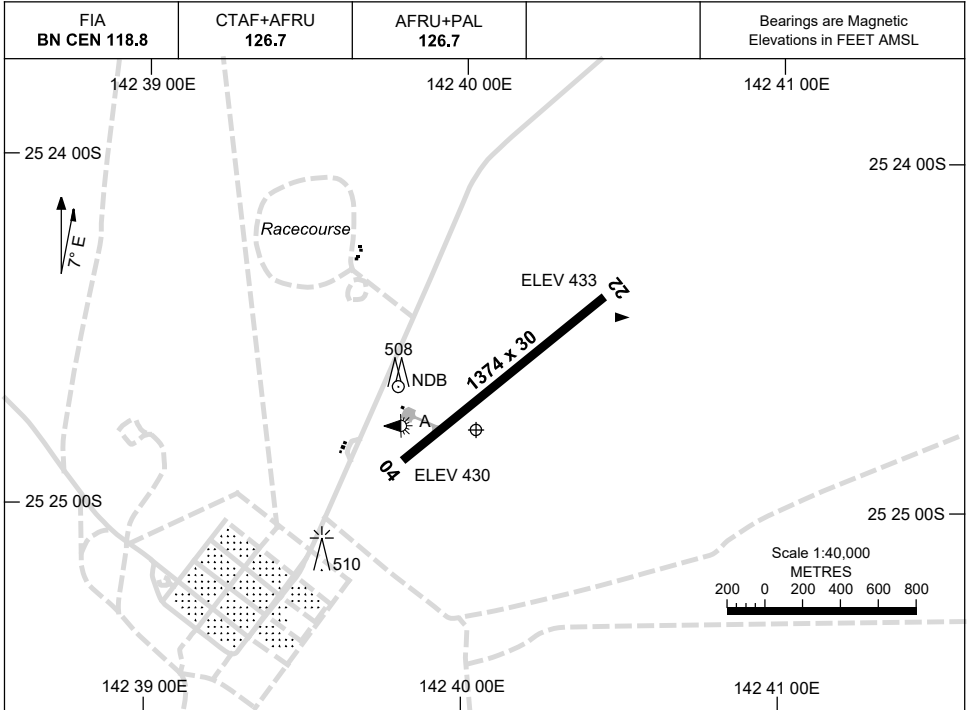


15 JUN 2023

AD ELEV 452
25 24 47S 142 40 02E

AERODROME CHART
WINDORAH, QLD (YWDH)



	AERODROME LIGHTING
RWY	RL : AFRU+PAL 126.7 , SDBY (MANUAL ACT, 30 MIN PIN)
04 <small>043</small>	LIRL
<small>223</small> 22	LIRL

NOTES

1. FIA FREQ 118.8 AVBL 10,500FT.

Changes: MAG VAR.

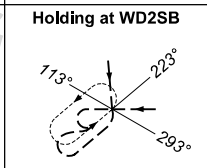
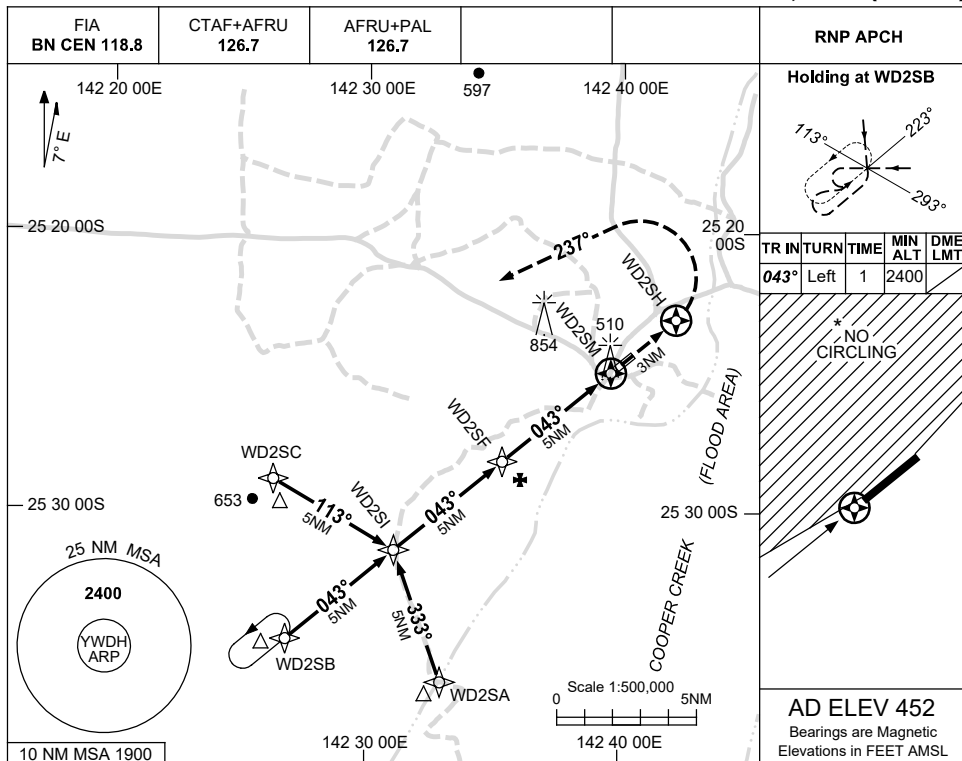
WDHAD01-175

USE QNH

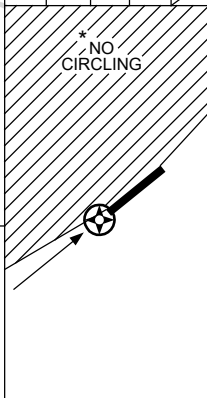
RNP RWY 04

WINDORAH, QLD (YWDH)

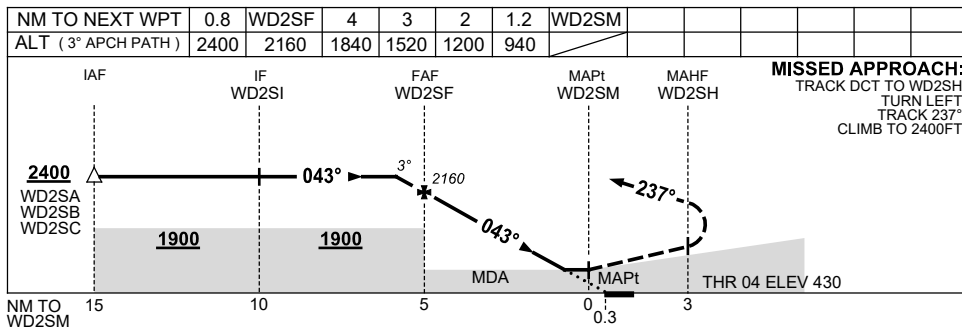
15 JUN 2023



TR	IN	TURN	TIME	MIN ALT	DME LMT
043°	Left	1		2400	



AD ELEV 452
Bearings are Magnetic
Elevations in FEET AMSL



MISSED APPROACH:
TRACK DCT TO WD2SH,
TURN LEFT,
TRACK 237°,
CLIMB TO 2400FT.

NOTES

- MAX IAS: INITIAL : 210KT.
- * NO CIRCLING N OF RWY 04/22.

CATEGORY	A	B	C	D
LNAV	940 (510-2.9)			NOT APPLICABLE
CIRCLING *	1060 (608-2.4)		1160 (708-4.0)	
ALTERNATE	(1108-4.4)		(1208-6.0)	

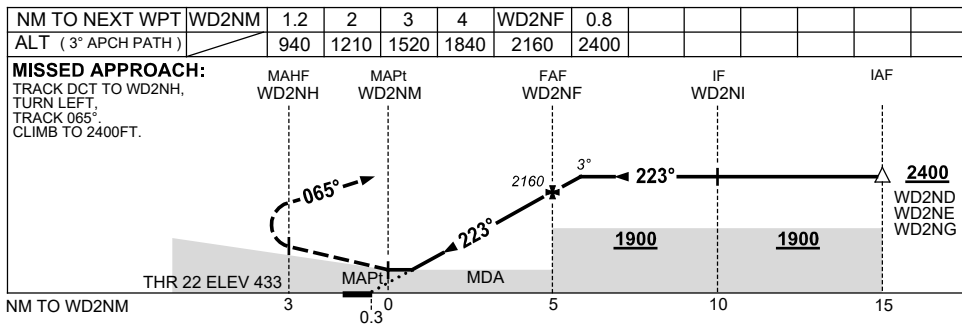
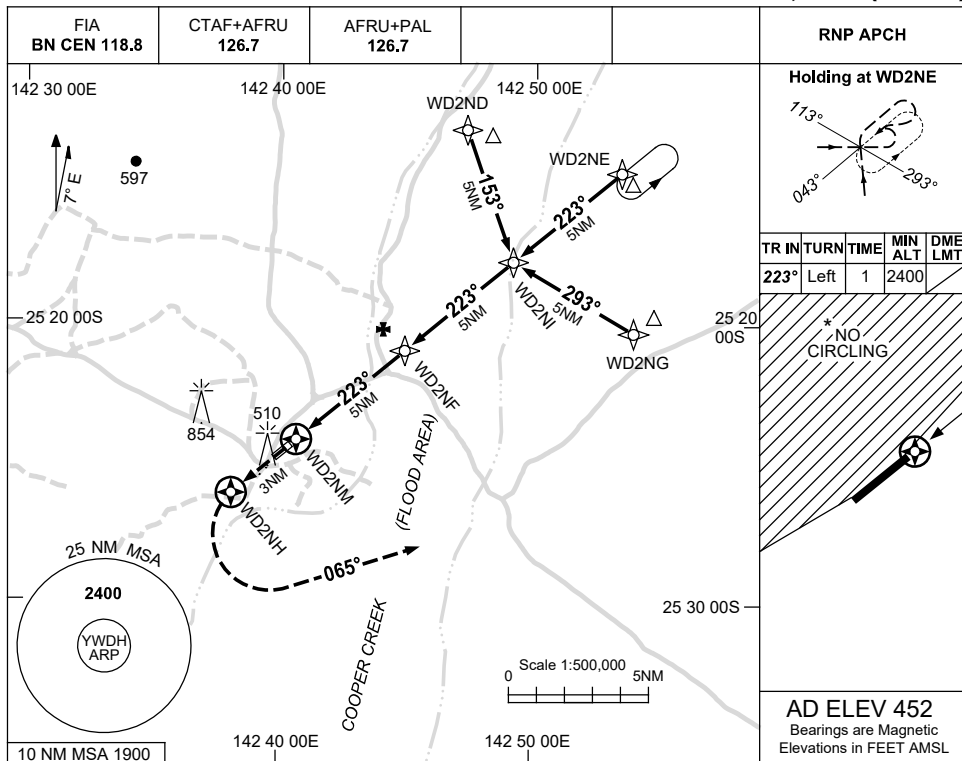
Changes: MAG VAR, WPT NAMING CONVENTION.

WDHGN01-175

USE QNH

RNP RWY 22
WINDORAH, QLD (YWDH)

15 JUN 2023



NOTES

CATEGORY	A	B	C	D
LNAV	940 (507-2.9)			NOT APPLICABLE
CIRCLING *	1060 (608-2.4)		1160 (708-4.0)	
ALTERNATE	(1108-4.4)		(1208-6.0)	

- 1. MAX IAS: INITIAL : 210KT.
- * 2. NO CIRCLING N OF RWY 04/22.

Changes: MAG VAR, WPT NAMING CONVENTION.

WDHGN02-175

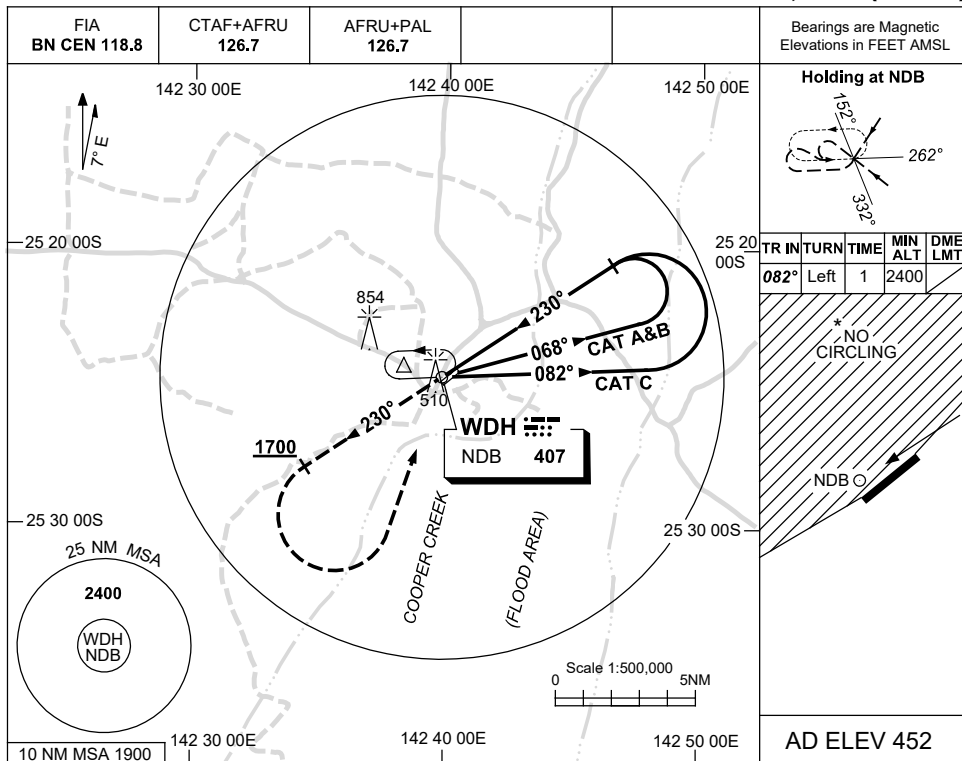


USE QNH

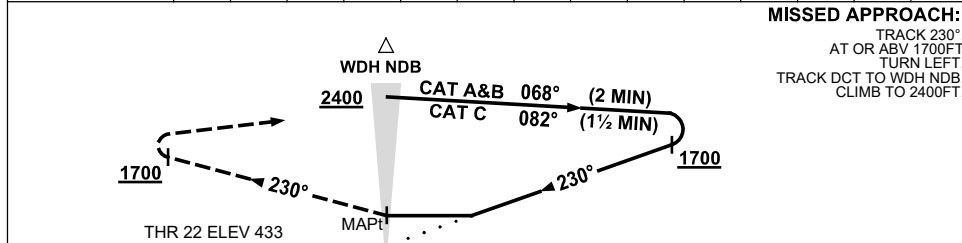
NDB RWY 22

15 JUN 2023

WINDORAH, QLD (YWDH)



DME DIST	NOT APPLICABLE									
ALT										



NOTES

CATEGORY	A	B	C	D
S-I NDB	990 (557-3.2)			NOT APPLICABLE
CIRCLING *	1060 (608-2.4)		1160 (708-4.0)	
ALTERNATE	(1108-4.4)		(1208-6.0)	

- 1. MAX IAS:
INITIAL : 210KT.
- * 2. NO CIRCLING N
OF RWY 04/22.

Changes: MAG VAR, Editorial.

WDHNB01-175