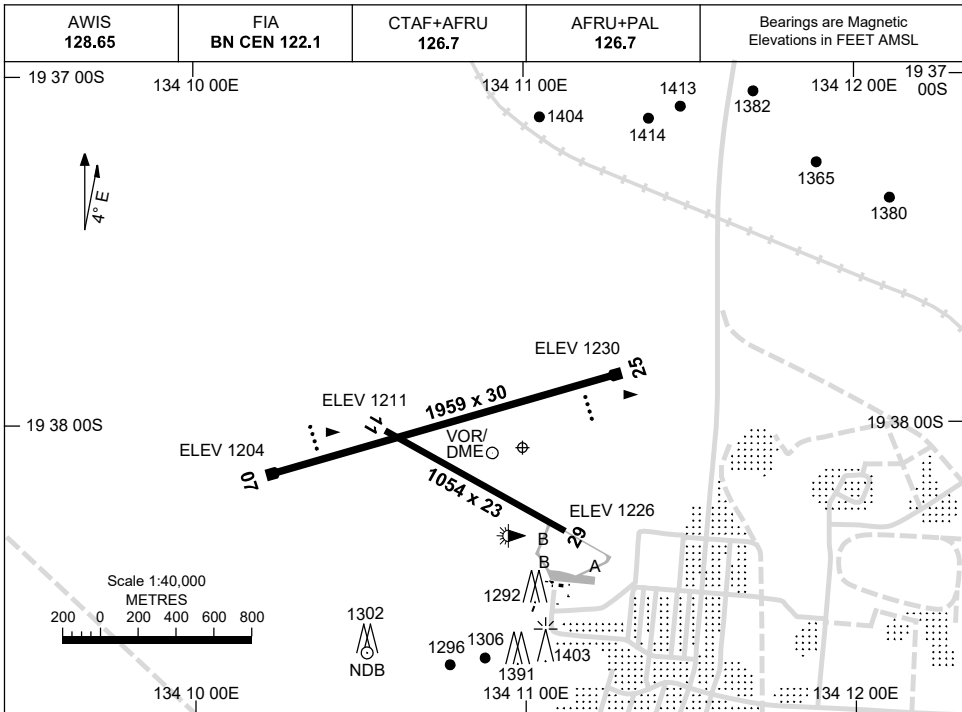


23 MAR 2023

AD ELEV 1236

19 38 04S 134 11 00E

AERODROME CHART
TENNANT CREEK, NT (YTNK)



AERODROME LIGHTING	
RWY	TAXIWAY : BLUE EDGE RL : AFRU+PAL 126.7 , SDBY (25 SEC)
07 <small>070</small>	PAPI 3.0° 49FT LIRL
<small>250</small> 25	PAPI 3.0° 49FT LIRL
11 <small>115</small>	LIRL
<small>295</small> 29	LIRL

NOTES

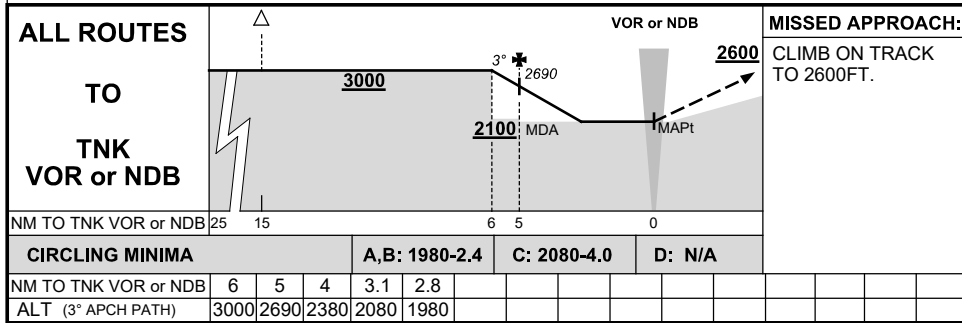
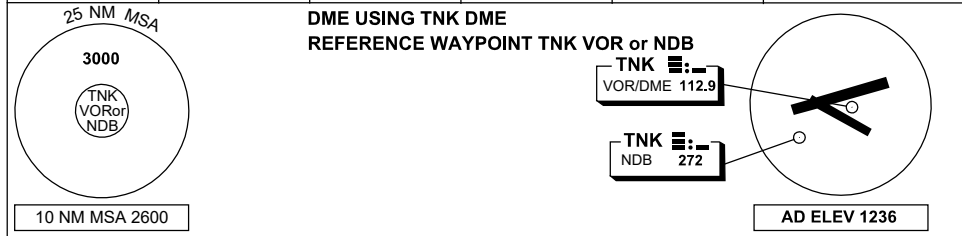
Changes: REMOVED NOTES, RWY 11 AND 25 THR ELEV.

TNKAD01-174

DME OR GNSS ARRIVAL PROCEDURES TENNANT CREEK, NT (YTNK)

16 JUN 2022

AWIS 128.65	FIA BN CEN 122.1	CTAF+AFRU 126.7	AFRU+PAL 126.7		Bearings are Magnetic Elevations in FEET AMSL
----------------	---------------------	--------------------	-------------------	--	--

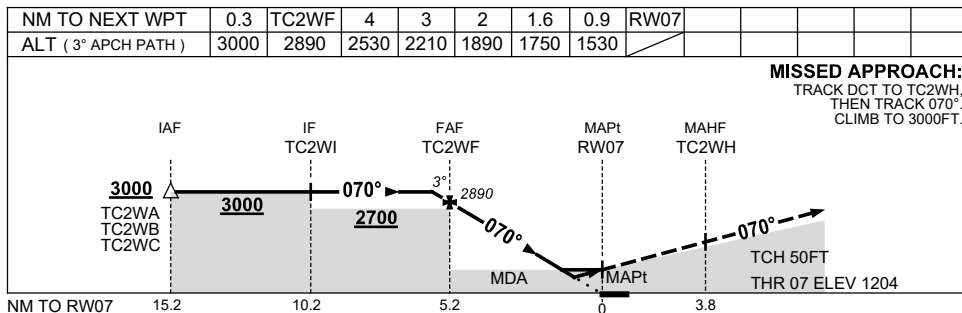
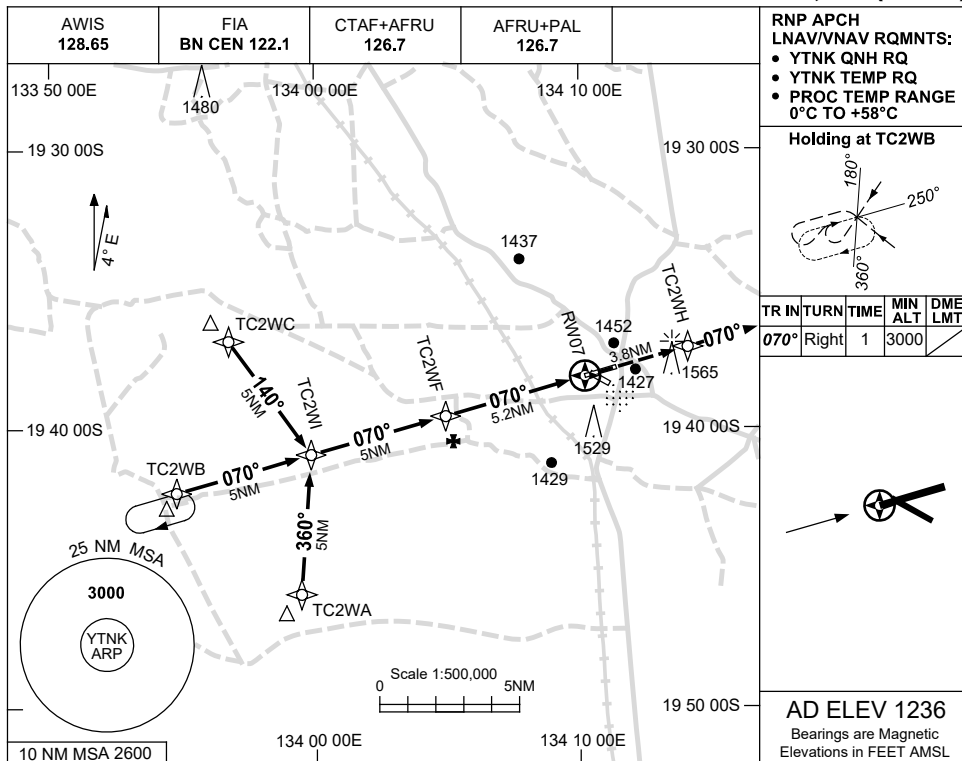


USE QNH

RNP RWY 07

8 SEP 2022

TENNANT CREEK, NT (YTNK)



NOTES

CATEGORY	A	B	C	D
LNAV/VNAV		1530 (326-1.8)		NOT APPLICABLE
LNAV		1750 (546-3.1)		
CIRCLING	1980 (744-2.4)		2080 (844-4.0)	
ALTERNATE	(1244-4.4)		(1344-6.0)	

1. MAX IAS:
INITIAL : 230KT.

Changes: CHART TITLE, PBN SPECIFICATION BOX.

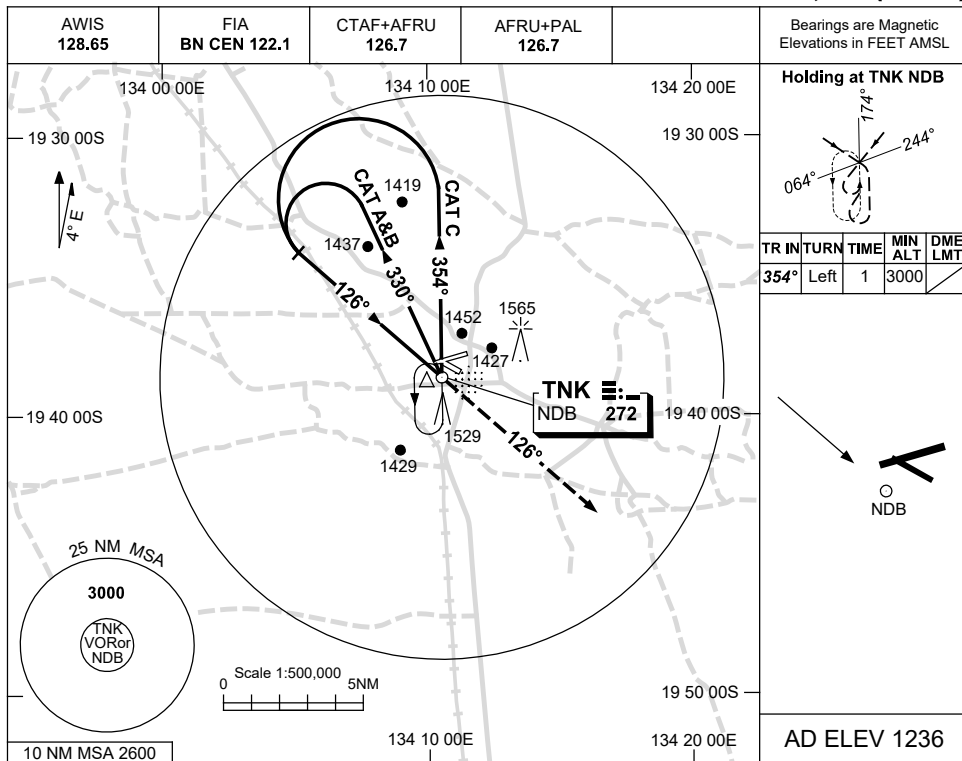
TNKGNO1-172

USE QNH

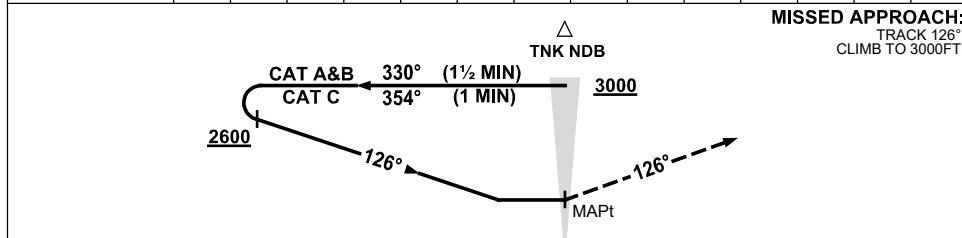
NDB-A

16 JUN 2022

TENNANT CREEK, NT (YTNK)



DME DIST	NOT APPLICABLE				
ALT					



MISSED APPROACH:
TRACK 126°
CLIMB TO 3000FT.

NOTES

- MAX IAS: 210KT.
INITIAL : 210KT.

CATEGORY	A	B	C	D
CIRCLING	1980 (744-2.4)		2080 (844-4.0)	NOT APPLICABLE
ALTERNATE	(1244-4.4)		(1344-6.0)	

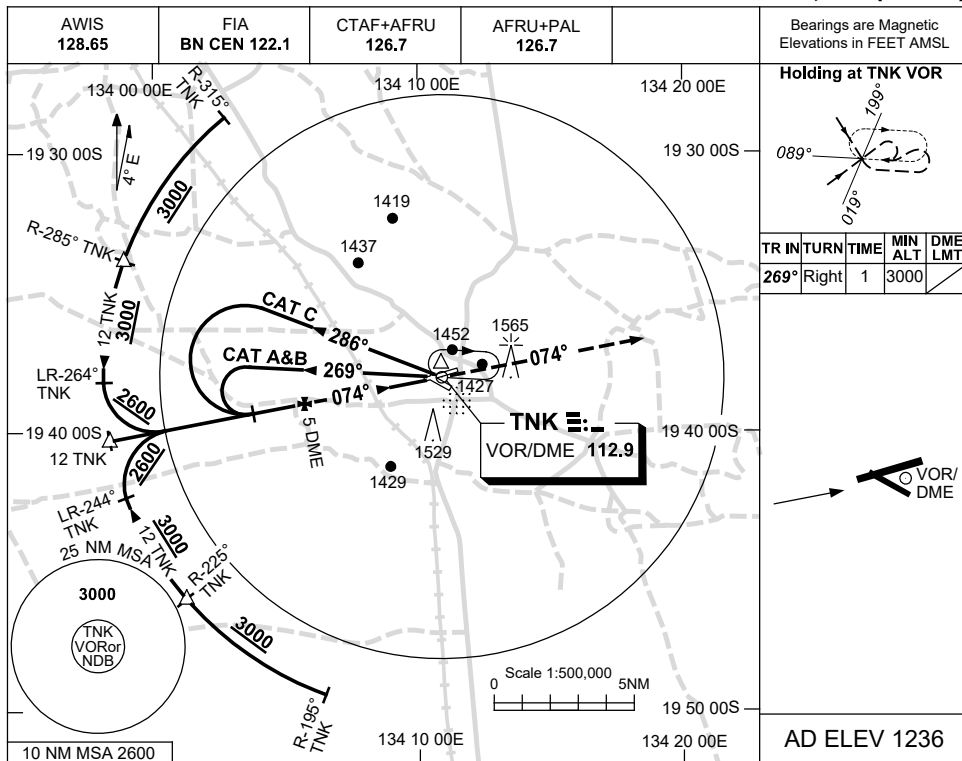
Changes: MINIMAS, NOTES.

TNKNB01-171

USE QNH

VOR RWY 07
TENNANT CREEK, NT (YTNK)

16 JUN 2022



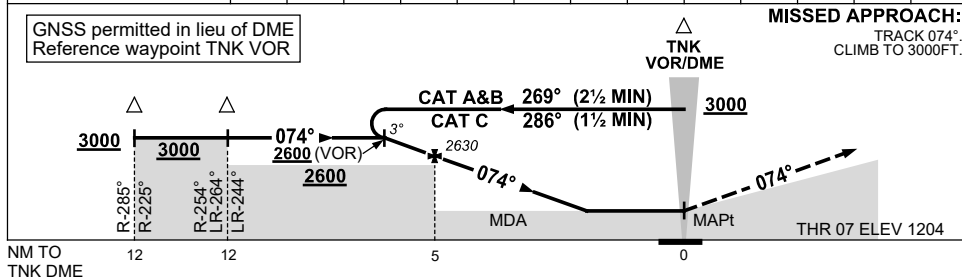
Bearings are Magnetic
Elevations in FEET AMSL

Holding at TNNK VOR

TR	IN	TURN	TIME	MIN	DME
				ALT	LMT
269°	Right		1	3000	

AD ELEV 1236

DIST TO TNNK DME	6.2	6	5	4	3	2.4	2.3						
ALT (3° APCH PATH)	3000	2950	2630	2310	1990	1820	1780						



NOTES

- MAX IAS:
INITIAL : 210KT.

CATEGORY	A	B	C	D
S-I VOR/DME		1780 (576-3.3)		NOT APPLICABLE
S-I VOR		1820 (616-3.5)		
CIRCLING	1980 (744-2.4)		2080 (844-4.0)	
ALTERNATE	(1244-4.4)		(1344-6.0)	

Changes: MINIMAS, NOTES.

TNNKVO01-171