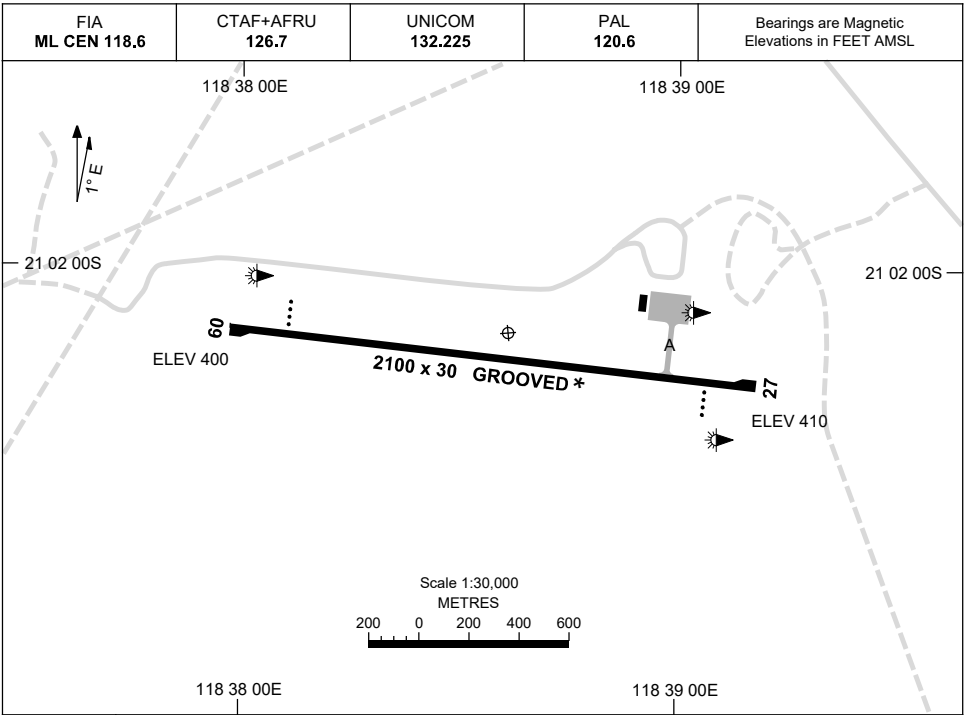


1 DEC 2022

AD ELEV 410
21 02 09S 118 38 37E

AERODROME CHART
PORT HEDLAND/WODGINA, WA (YWGA)



	AERODROME LIGHTING
RWY	TWY : BLUE EDGE RL : PAL 120.6 , SDBY (2 MIN)
09 <small>095</small>	PAPI LEFT SIDE 3.0° 53FT LIRL PTBL
<small>275</small> 27	PAPI LEFT SIDE 3.0° 53FT LIRL PTBL

NOTES

- * 1. RWY GROOVED - 30M WIDE.
- 2. UNICOM CALL SIGN "WODGINA UNICOM".
AVBL FOR SCHEDULED MOVEMENTS.
- 3. FIA FREQ 118.6 AVBL IN CIRCUIT AREA.
- 4. RWY 09/27 PTBL LIGHTING AVBL WITH 2HR PN.

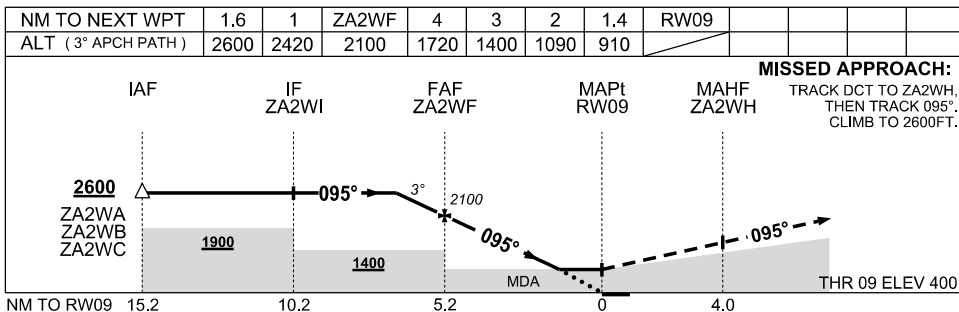
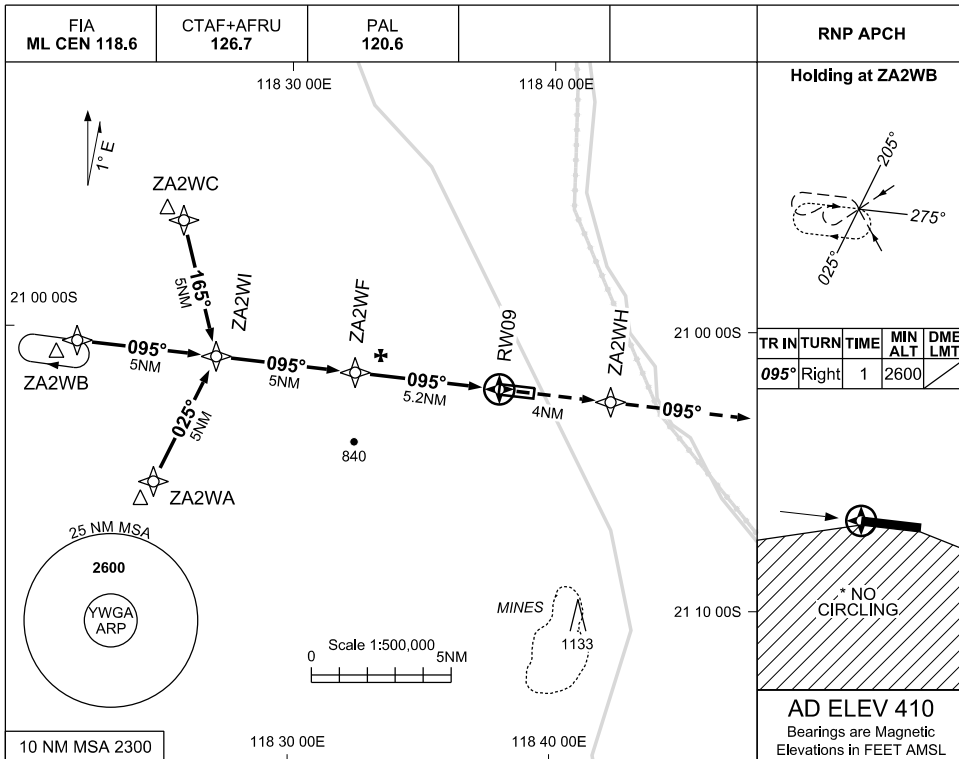
Changes: NOTE 2 DELETED.

WGAAD01-173

**USE QNH
PORT HEDLAND / WODGINA, WA (YWGA)**

30 NOV 2023

RNP RWY 09



NOTES

- MAX IAS : INITIAL : 210KT
- NO CIRCLING SOUTH OF RWY 09/27

CATEGORY	A	B	C	D
LNAV	910 (510-3.0)			NOT APPLICABLE
CIRCLING *	1010 (600-2.4)		1110 (700-4.0)	
ALTERNATE	(1100-4.4)		(1200-6.0)	

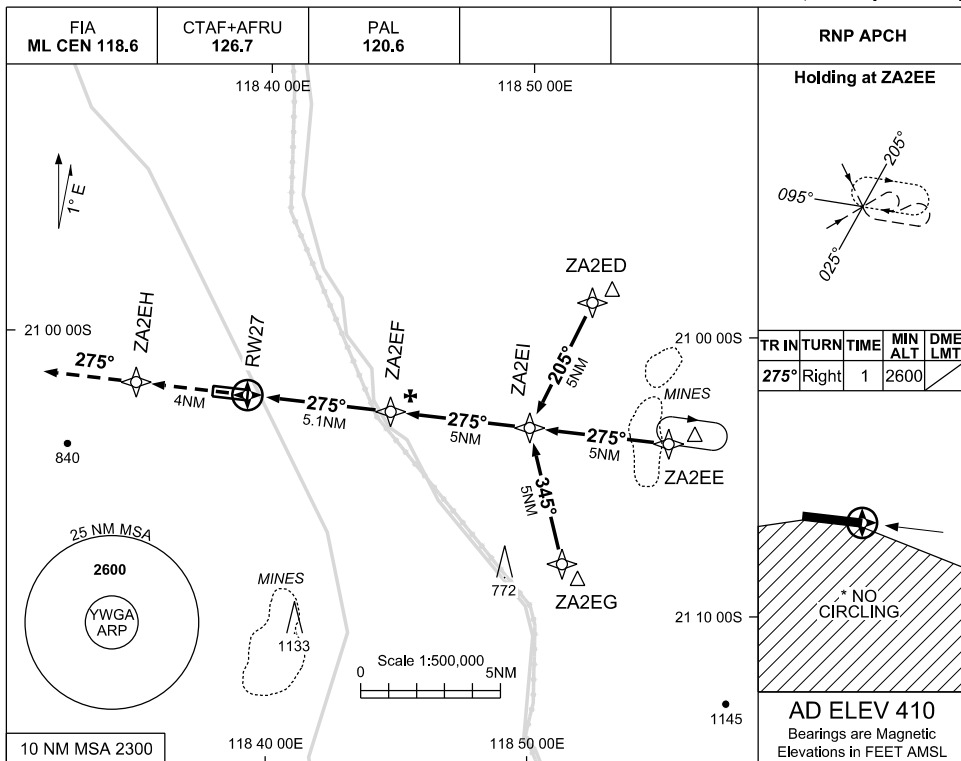
Changes: CHART TITLE, WPT IDENT, EDITORIAL

WGAGN01-177

USE QNH PORT HEDLAND / WODGINA, WA (YWGA)

30 NOV 2023

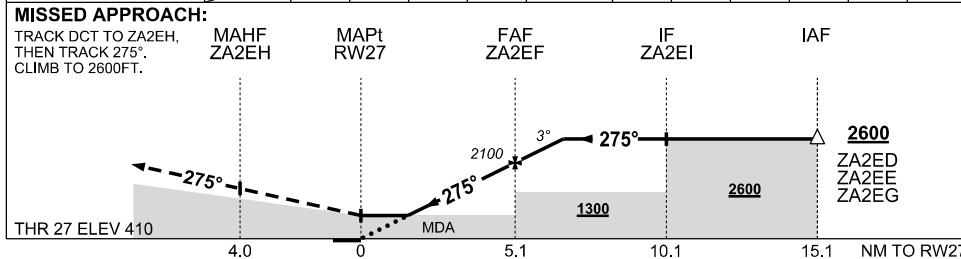
RNP RWY 27



TR	IN	TURN	TIME	MIN ALT	DME LMT
275°	Right		1	2600	

AD ELEV 410
Bearings are Magnetic
Elevations in FEET AMSL

NM TO NEXT WPT	RW27	1.6	2	3	4	ZA2EF	1	1.6			
ALT (3° APCH PATH)		960	1100	1420	1730	2100	2420	2600			



NOTES

- MAX IAS : 210KT
- NO CIRCLING SOUTH OF RWY 09/27
- CAUTION:** BLASTING 15NM E OF RWY 09/27 REFER ERSA

CATEGORY	A	B	C	D
LNAV	960 (550-3.2)			NOT APPLICABLE
CIRCLING *	1010 (600-2.4)		1110 (700-4.0)	
ALTERNATE	(1100-4.4)		(1200-6.0)	

Changes: CHART TITLE, WPT IDENT, EDITORIAL

WGAGN02-177