

21 MAR 2024

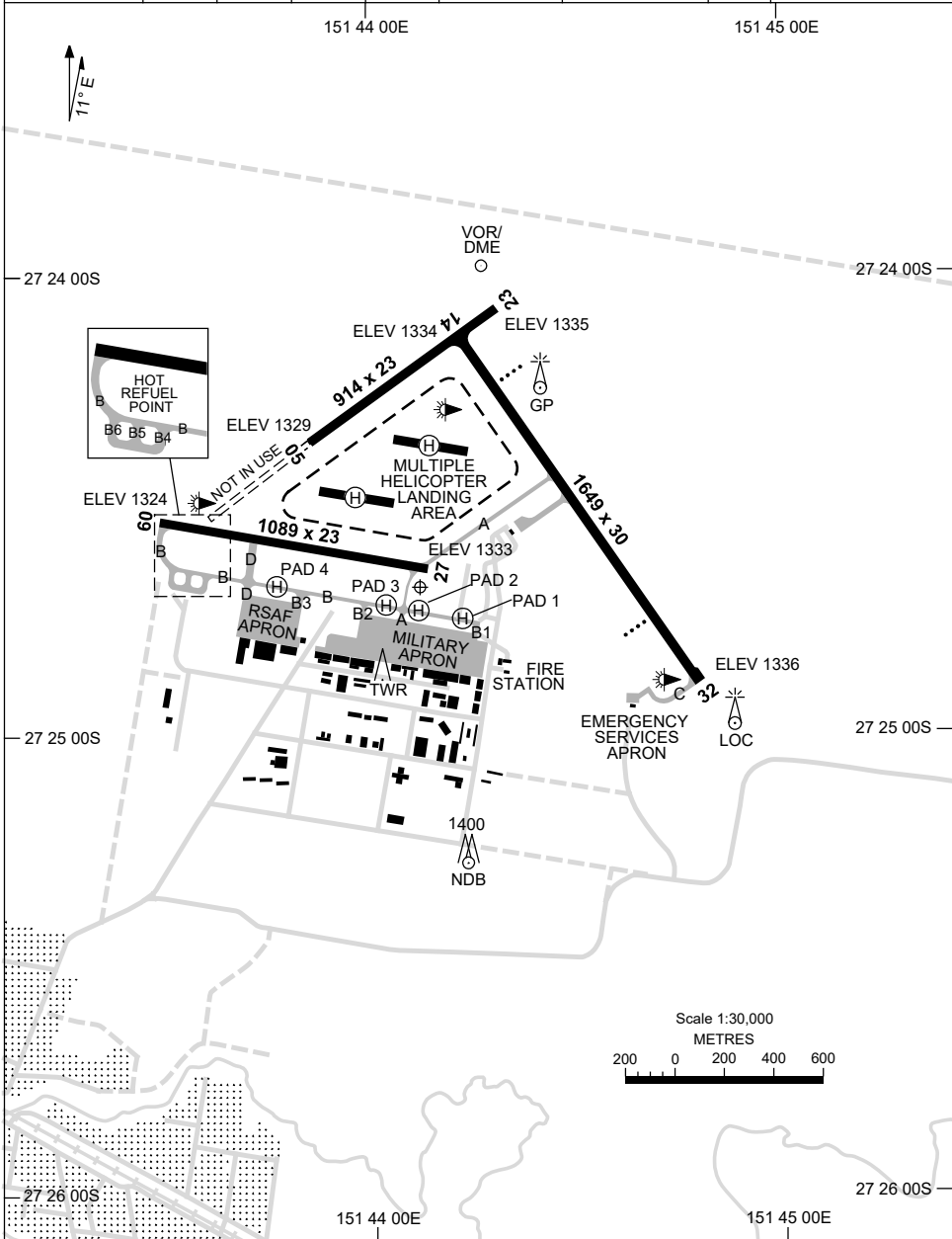
AD ELEV 1336

27 24 41S 151 44 07E

AERODROME CHART - Page 1

Oakey, QLD (YBOK)

| | | | | | | | | |
|-------------------|--------------|---------------|--------------|--------------|--------------------------|--------------------------|--------------|--|
| ATIS 124.3 254 | APP 125.4 | ACD 133.35 | TWR 120.1 | SMC 121.9 | FIA (AH) BN CEN 121.2 | CTAF+AFRU (AH) 127.65 | PAL 121.3 | Bearings are Magnetic Elevations in FEET AMSL |
|-------------------|--------------|---------------|--------------|--------------|--------------------------|--------------------------|--------------|--|



Changes: ABN DECOMMISSIONED, RENAMING OF HELIPADS, Editorial.

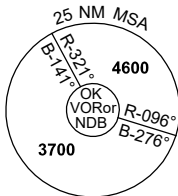
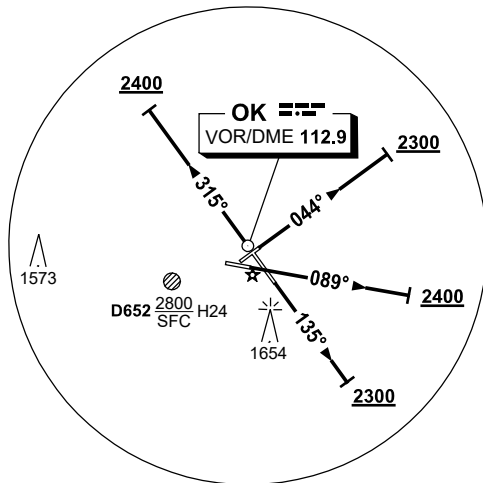
BOKAD01-178

**STANDARD INSTRUMENT DEPARTURES (SID)
OAKEY SIX DEPARTURE (RADAR)
OAKEY, QLD (YBOK)**

21 MAY 2020

| | | | | | | | | |
|-------------------|--------------|---------------|--------------|--------------|--------------------------|--------------------------|--------------|---|
| ATIS 124.3 254 | APP 125.4 | ACD 133.35 | TWR 120.1 | SMC 121.9 | FIA (AH) BN CEN 121.2 | CTAF+AFRU (AH) 127.65 | PAL 121.3 | Bearings are Magnetic. Elevations in FEET AMSL |
|-------------------|--------------|---------------|--------------|--------------|--------------------------|--------------------------|--------------|---|

NOT TO SCALE



10 NM MSA 3700

OAKEY SIX DEPARTURE (RADAR)

RWY 05

GRAD 3.3%

- Track 044°
- At 2300FT, but not before DER, turn to assigned heading or track
- When directed contact Approach for radar vectors

RWY 09

GRAD 3.6% to 2800FT, thence 3.3% (5% to 2400FT)

- Track 089°
- At 2400FT, but not before DER, turn to assigned heading or track
- When directed contact Approach for radar vectors

RWY 14

GRAD 4.1% to 2800FT, thence 3.3% (5% to 2300FT)

- Track 135°
- At 2300FT, but not before DER, turn to assigned heading or track
- When directed contact Approach for radar vectors

RWY 32

GRAD 3.3%

- Track 315°
- At 2400FT but not before DER, turn to assigned heading or track
- When directed contact Approach for radar vectors

COMMUNICATIONS FAILURE PROCEDURE

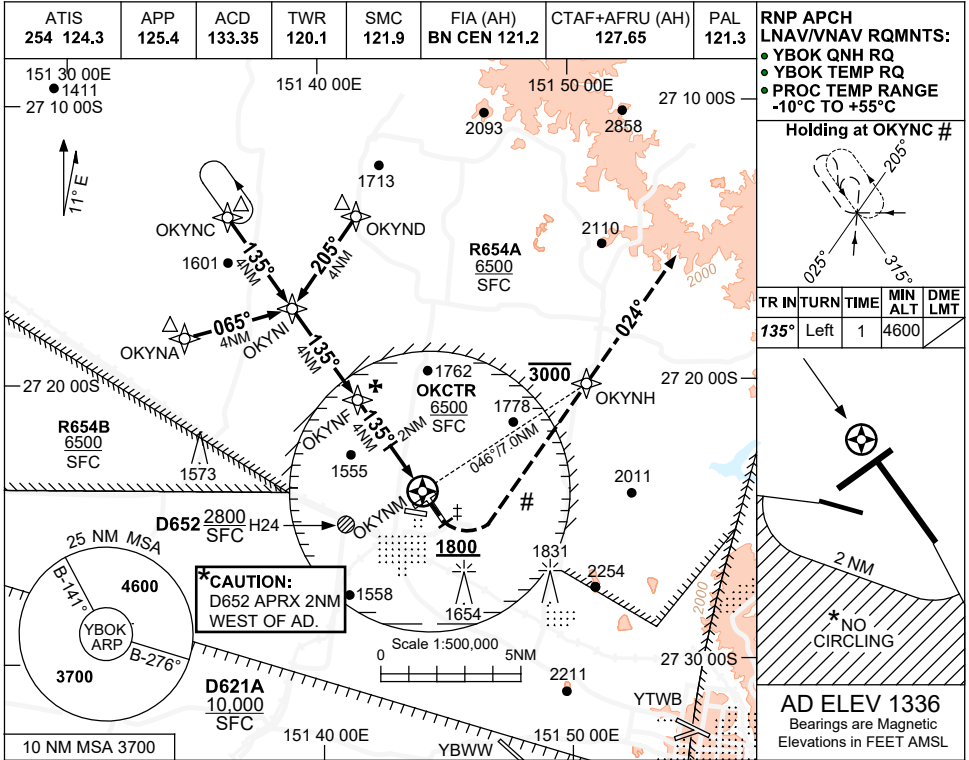
On recognition of communication failure:

- Squawk 7600
- Maintain last assigned vector for two minutes and, if necessary, climb to minimum safe altitude to maintain terrain clearance, then
- Proceed in accordance with the latest ATC route clearance acknowledged.

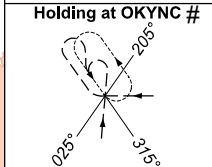
USE QNH

RNP RWY 14
Oakey, QLD (YBOK)

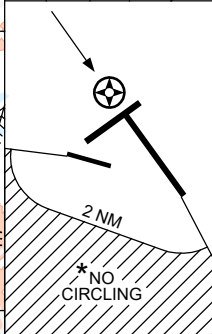
16 JUN 2022



RNP APCH
 LNAV/VNAV RQMNTS:
 • YBOK QNH RQ
 • YBOK TEMP RQ
 • PROC TEMP RANGE
 -10°C TO +55°C

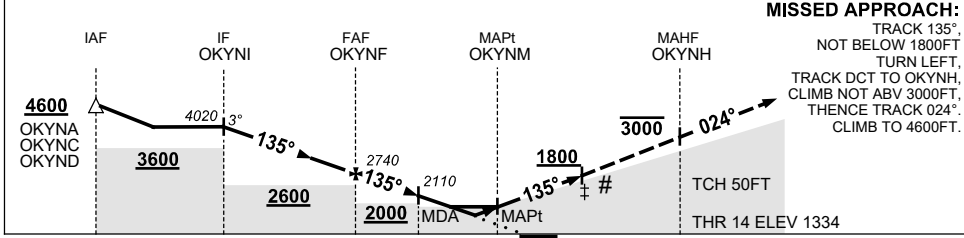


| TR | INTURN | TIME | MIN ALT | DME LMT |
|------|--------|------|---------|---------|
| 135° | Left | 1 | 4600 | |



AD ELEV 1336
 Bearings are Magnetic
 Elevations in FEET AMSL

| NM TO NEXT WPT | OKYNI | 3 | 2 | 1 | OKYNF | 3 | 2 | 1.2 | 0.6 | OKYNM |
|--------------------|-------|------|------|------|-------|------|------|------|------|-------|
| ALT (3° APCH PATH) | 4020 | 3700 | 3380 | 3060 | 2740 | 2430 | 2110 | 1860 | 1670 | |



MISSED APPROACH:
 TRACK 135°, NOT BELOW 1800FT
 TURN LEFT, TRACK DCT TO OKYNH,
 CLIMB NOT ABV 3000FT,
 THENCE TRACK 024°, CLIMB TO 4600FT.

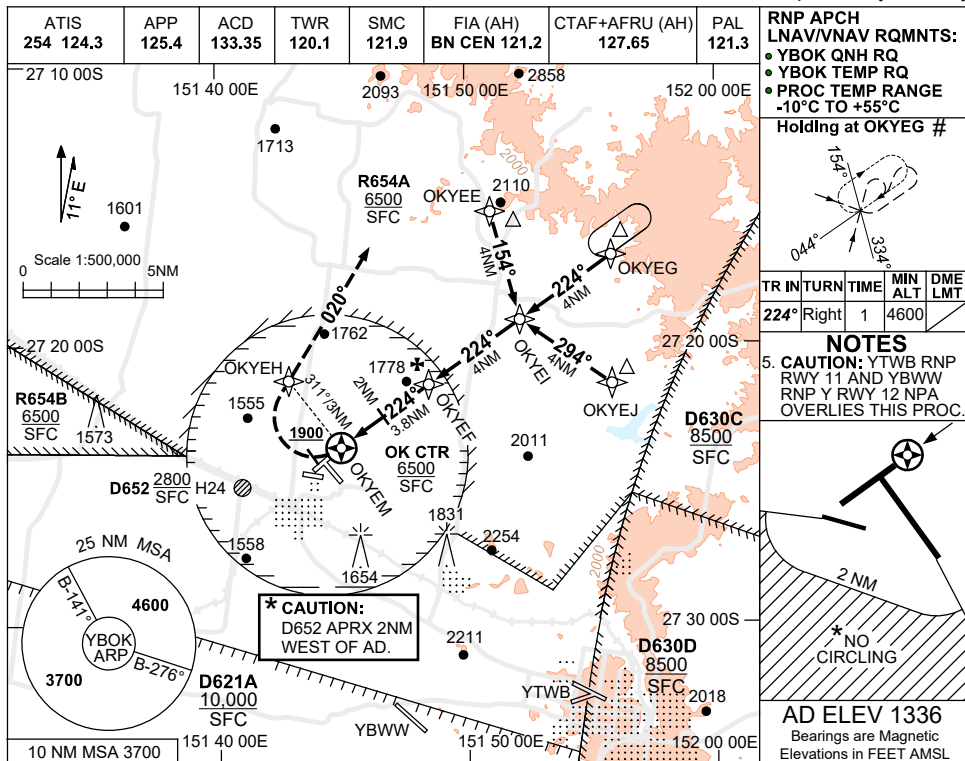
NOTES
 1. MAX IAS:
 INITIAL : 200KT.
 ‡ MAP TURN: 180KT.
 2. CAUTION: YTWB RNP RWY 11 NPA OVERLIES THIS PROCEDURE.
 * 3. NO CIRCLING SW OF RWY 09/27 AND RWY 14/32 BEYOND 2NM.
 # 4. PROC MAY NOT BE CONTAINED IN CTA.

| CATEGORY | A | B | C | D |
|------------|----------------|----------------|-----------------|----------------|
| LNAV/VNAV | | 1670 (336-1.9) | | NOT APPLICABLE |
| LNAV | | 1860 (524-3.0) | | |
| CIRCLING * | 2170 (834-2.4) | | 2470 (1134-4.0) | |
| ALTERNATE | (1334-4.4) | | (1634-6.0) | |

Changes: OK CTR, R654A AND R654B.

BOKGN01-171

16 JUN 2022



RNP APCH LNAV/VNAV RQMNTS:

- YBOK QNH RQ
- YBOK TEMP RQ
- PROC TEMP RANGE -10°C TO +55°C

Holding at OKYEG #

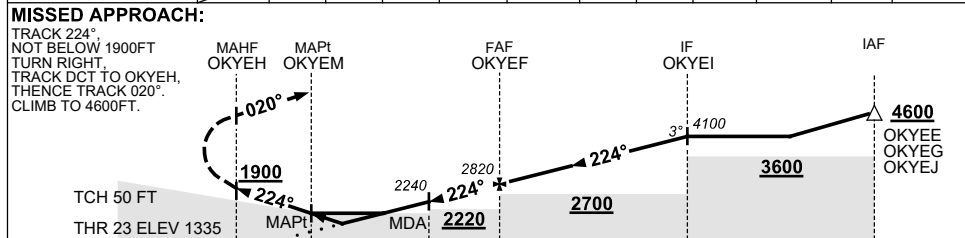
| TR IN | TURN | TIME | MIN ALT | DME LMT |
|-------|-------|------|---------|---------|
| 224° | Right | 1 | 4600 | |

NOTES

5. CAUTION: YTWB RNP RWY 11 AND YBWW RNP Y RWY 12 NPA OVERLIES THIS PROC.

AD ELEV 1336
Bearings are Magnetic
Elevations in FEET AMSL

| NM TO NEXT WPT | OKYEM | 0.8 | 1.4 | 2 | 3 | OKYEF | 1 | 2 | 3 | OKYEI |
|--------------------|-------|------|------|------|------|-------|------|------|------|-------|
| ALT (3° APCH PATH) | | 1850 | 2060 | 2240 | 2560 | 2820 | 3140 | 3450 | 3770 | 4100 |



- NOTES**
- MAX IAS:
INITIAL : 200KT.
MAP TURN: 130KT.
 - HLDG AREA NOT CONTAINED WITHIN RESTD AREAS WHEN ACT.
 - NO CIRCLING SW OF RWY 09/27 AND RWY 14/32 BEYOND 2NM.
 - PROC MAY NOT BE CONTAINED IN CTA.

| CATEGORY | A | B | C | D |
|------------|----------------|---|----------------|---|
| LNAV/VNAV | 1850 (515-2.9) | | NOT APPLICABLE | |
| LNAV | 2060 (724-4.1) | | | |
| CIRCLING * | 2170 (834-2.4) | | | |
| ALTERNATE | (1334-4.4) | | | |

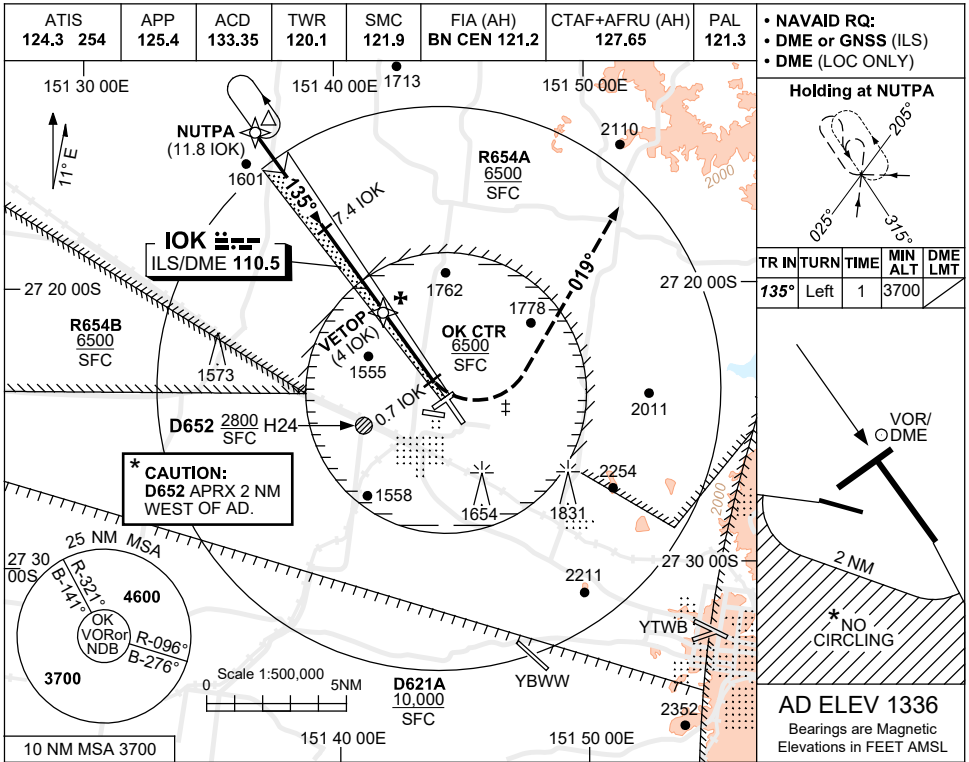
Changes: OK CTR, R654A AND R654B, Editorial.

BOKGN02-171

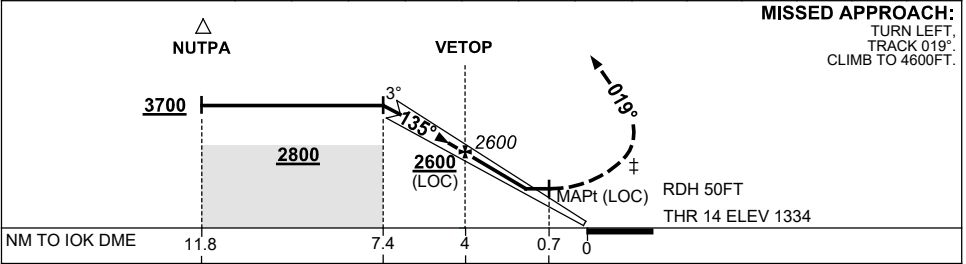
USE QNH

ILS-Z or LOC-Z RWY 14
Oakey, QLD (YBOK)

16 JUN 2022



| | | | | | | | | | | | | | |
|--------------------|------|------|------|------|------|------|------|--|--|--|--|--|--|
| DIST TO IOK DME | 7.4 | 7 | 6 | 5 | 4 | 3 | 2.1 | | | | | | |
| ALT (3° APCH PATH) | 3700 | 3560 | 3240 | 2930 | 2600 | 2290 | 1990 | | | | | | |



| CATEGORY | A | B | C | D |
|--------------------|----------------|-----------------|------------|----------------|
| S-I ILS (2.5% MAP) | | 1920 (586-3.3) | | NOT APPLICABLE |
| S-I ILS (5.4% MAP) | | 1690 (356-2.0) | | |
| S-I LOC | | 1990 (654-3.7) | | |
| CIRCLING * | 2170 (834-2.4) | 2470 (1134-4.0) | | |
| ALTERNATE | | (1334-4.4) | (1634-6.0) | |

NOTES

- MAX IAS :
HOLDING: 180KT.
INITIAL : 180KT.
‡ MAP TURN: 170KT.
- NO CIRCLING SW OF RWY 09/27 AND RWY 14/32 BEYOND 2NM.
- CAUTION:** PROC OVERLAID BY YTWB RNP RWY 11.

Changes: OK CTR, R654A AND R654B, Editorial.

BOKII01-171