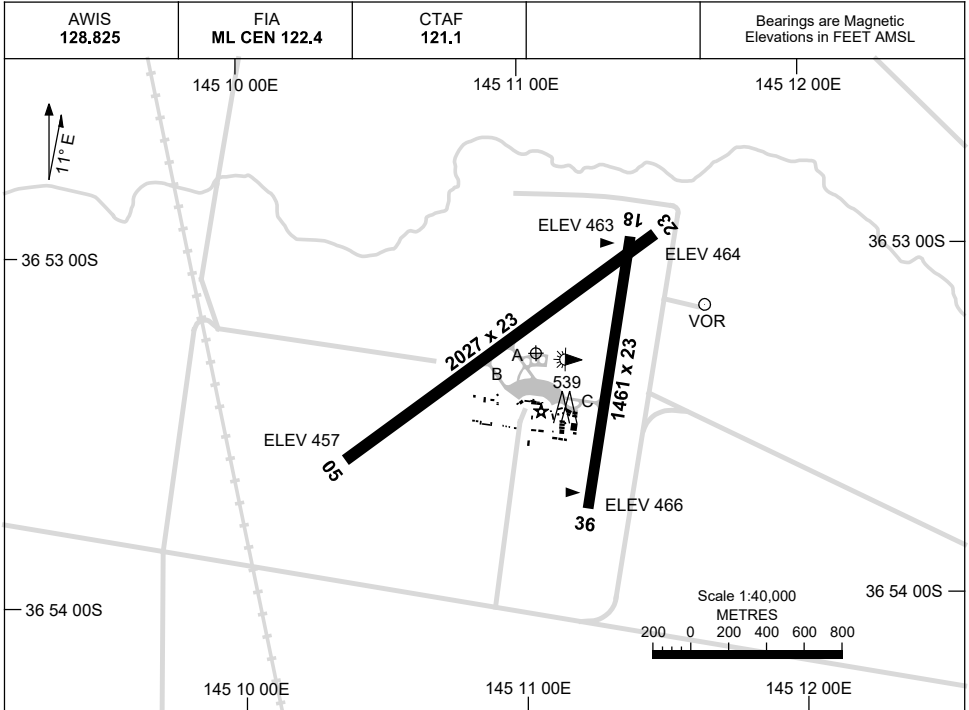


15 JUN 2023

AD ELEV 467
36 53 18S 145 11 03E

AERODROME CHART
MANGALORE, VIC (YMNG)



	AERODROME LIGHTING
RWY	ABN : ALTN W/G 8 SEC TAXIWAYS : BLUE EDGE RL : MAN ON RQ , SDBY (12 SEC) (ARO : 0428 863 439)
05 <small>043</small>	LIRL
<small>223</small> 23	LIRL
18 <small>178</small>	LIRL
<small>358</small> 36	LIRL

NOTES

1. AWIS REQUIRES ONE-SECOND PULSE TO ACTIVATE.

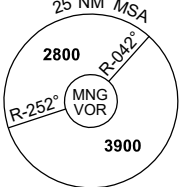
Changes: NOTES.

MNGAD01-175

GNSS ARRIVAL PROCEDURES MANGALORE, VIC (YMNG)

17 JUN 2021

AWIS 128.825	FIA ML CEN 122.4	CTAF 121.1		Bearings are Magnetic Elevations in FEET AMSL
-----------------	---------------------	---------------	--	--------------------------------------------------




25 NM MSA

2800
MNG VOR
3900

R-252° R-042°

REFERENCE WAYPOINT MNG VOR

MNG VOR 113.2




* NO CIRCLING

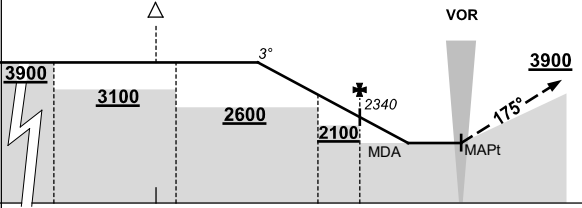
10 NM MSA 3400

AD ELEV 467

* NO CIRCLING IN SECTOR EAST OF RWY 18/36 AND STH EAST OF RWY 05/23.

SECTOR A





VOR

MISSED APPROACH:


TURN AS APPROPRIATE
TRACK 175°.
CLIMB TO 3900FT.

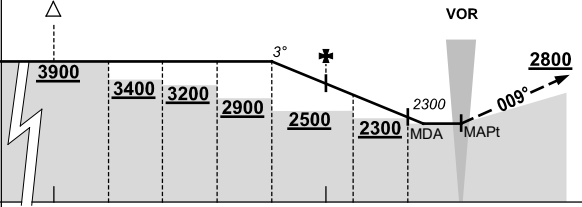
NOTES:

1. MAX IAS:
MAP TURN: 200KT.

NM TO MNG VOR	25	20	15	14	7	5	0											
CIRCLING MINIMA				A,B: 1600-2.4			C: 1600-4.0			D: 1600-5.0								
NM TO MNG VOR	10	9	8	7	6	5	4	3	2.7									
ALT (3° APCH PATH)	3900	3620	3300	2980	2660	2340	2020	1700	1600									

SECTOR B





VOR

MISSED APPROACH:

TURN AS APPROPRIATE
TRACK 009°.
CLIMB TO 2800FT.

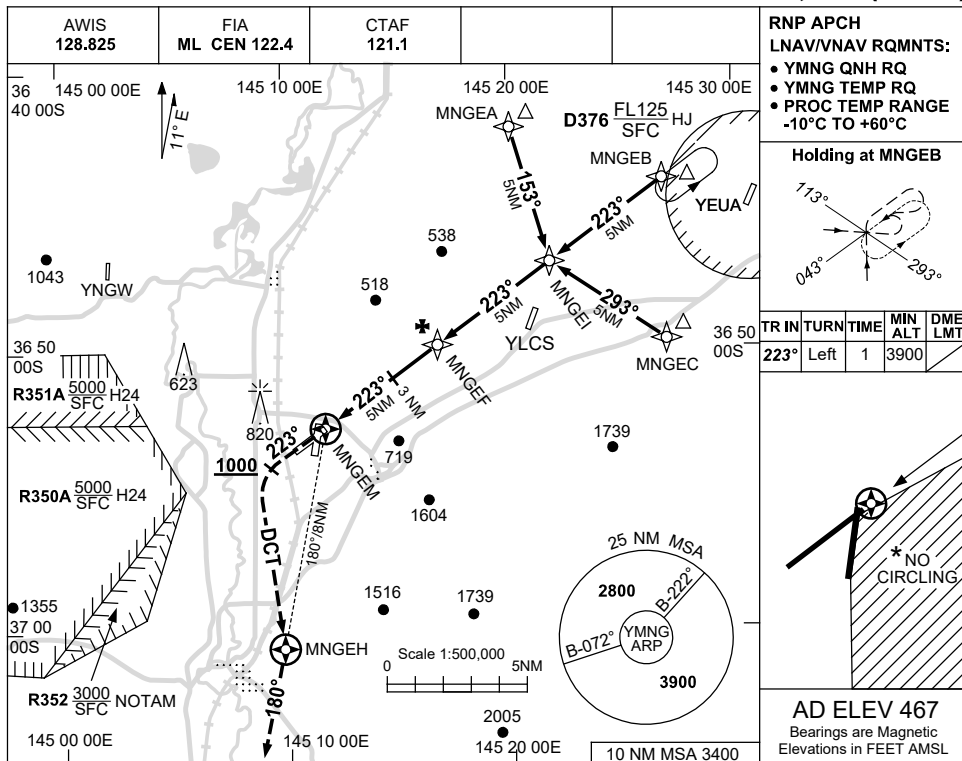
NM TO MNG VOR	25	15	13	11	9	7	5	4	2	0								
CIRCLING MINIMA				A,B: 2100-2.4			C: 2100-4.0			D: 2100-5.0								
NM TO MNG VOR	7	6	5	4	3	2	1.4											
ALT (3° APCH PATH)	3900	3580	3260	2940	2620	2300	2100											

USE QNH

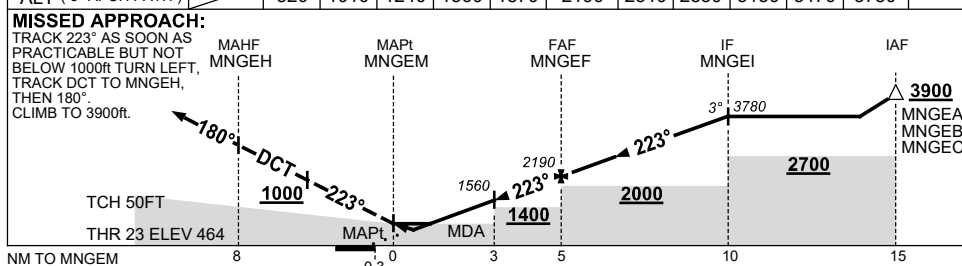
RNP RWY 23

30 NOV 2023

MANGALORE, VIC (YMNG)



NM TO NEXT WPT	MNGEM	0.7	1.3	2	3	4	MNGEF	1	2	3	4	MNGEI
ALT (3° APCH PATH)	820	1010	1240	1560	1870	2190	2510	2830	3150	3470	3780	



CATEGORY	A	B	C	D
RNAV/VNAV	820 (356-2.0)			
RNAV	1010 (543-3.1)			
CIRCLING *	1320 (853-2.4)	1420 (953-4.0)	1420 (953-5.0)	
ALTERNATE	(1353-4.4)	(1453-6.0)	(1453-7.0)	

- NOTES**
- MAX IAS:
INITIAL : 210KT,
MAP TURN: 200KT.
 - * NO CIRCLING IN SECTOR EAST OF RWY 18/36 AND STH EAST OF RWY 05/23.

Changes: D366 REMOVED, Editorial.

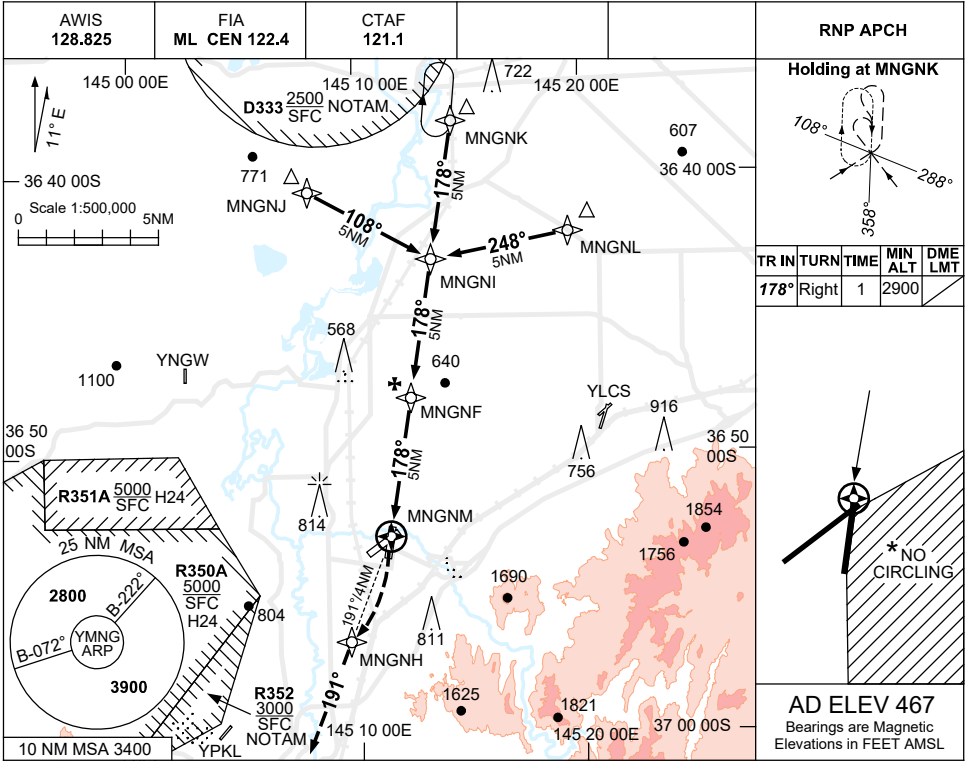
MNGGN01-177

USE QNH

RNP RWY 18

30 NOV 2023

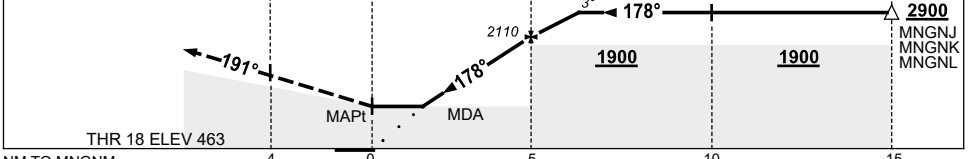
MANGALORE, VIC (YMNG)



NM TO NEXT WPT	MNGNM	1.5	2	3	4	MNGNF	1	2.5				
ALT (3° APCH PATH)	990	1150	1470	1790	2110	2430	2900					

MISSED APPROACH:

TURN RIGHT
TRACK DCT TO MNGNH
THEN TRACK 191°
CLIMB TO 3900ft



NM TO MNGNM: 4, 0, 5, 10, 15

NOTES

- MAX IAS:
INITIAL : 210KT
- NO CIRCLING IN SECTOR SOUTH EAST OF RWYS 18/36 AND 05/23.
- HOLD AREA OVERLAY YSHT NDB-A PRESCRIBED ALT ENSURES SEPARATION.
- COLOUR: SEE SPEC NOTICES.

CATEGORY	A	B	C	D
LNAV	990 (523-2.9)			NOT APPLICABLE
CIRCLING *	1320(853-2.4)		1420(953-4.0)	
ALTERNATE	(1353-4.4)		(1453-6.0)	

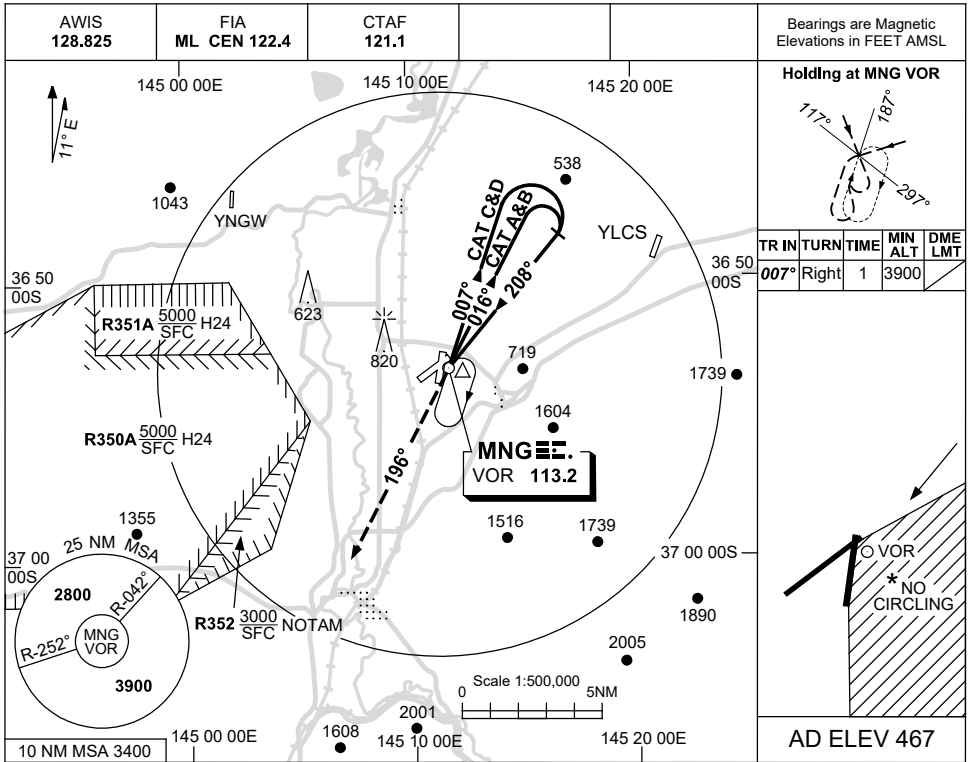
Changes: D366 REMOVED.

MNGGN02-177

USE QNH

VOR RWY 23
MANGALORE, VIC (YMNG)

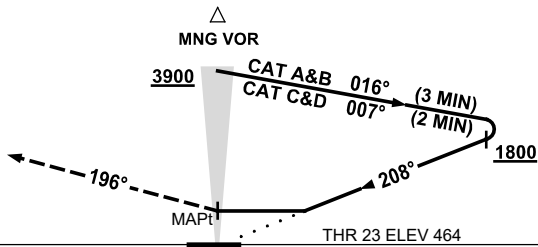
21 MAR 2024



DME DIST	NOT APPLICABLE				
ALT					

MISSED APPROACH:

TURN LEFT,
TRACK 196°,
CLIMB TO 3900ft.



NOTES

1. MAX IAS:
HOLDING : 180KT.
INITIAL :
CAT C&D : 180KT.
- *2. NO CIRCLING IN
SECTOR EAST OF RWY
18/36 AND STH EAST
OF RWY 05/23.
3. SEPARATION FM
R350A/B & R352 NOT
ASSURED WHEN
HLDG OR IN THE
MISSED APCH

CATEGORY	A	B	C	D
S-I VOR	1120 (653-3.7)			
CIRCLING *	1320 (853-2.4)	1420 (953-4.0)	1420 (953-5.0)	
ALTERNATE	(1353-4.4)	(1453-6.0)	(1453-7.0)	

Changes: NOTES.

MNGV001-178