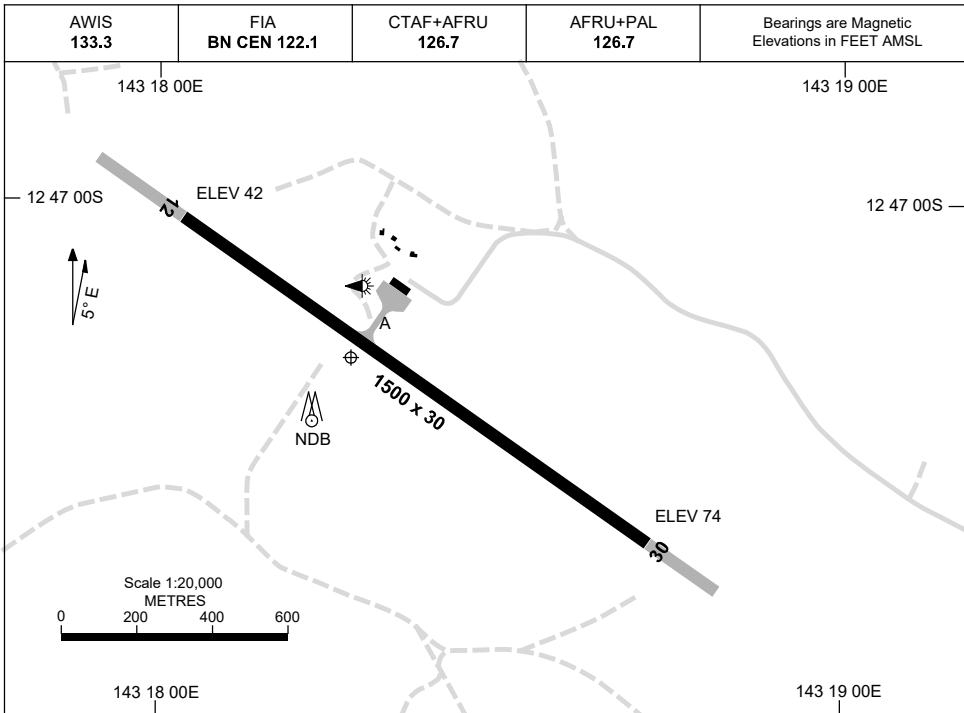


30 NOV 2023

AD ELEV 77
12 47 13S 143 18 17E

AERODROME CHART
LOCKHART RIVER, QLD (YLHR)



	AERODROME LIGHTING
RWY	TAXIWAY : BLUE EDGE RL : AFRU+PAL 126.7 , SDBY (30 SEC)
12 <small>120</small>	LIRL
<small>300</small> 30	LIRL

NOTES

1. FIA FREQ 122.1 AVBL 4500FT.

Changes: THR ELEV, NEW LOGO.

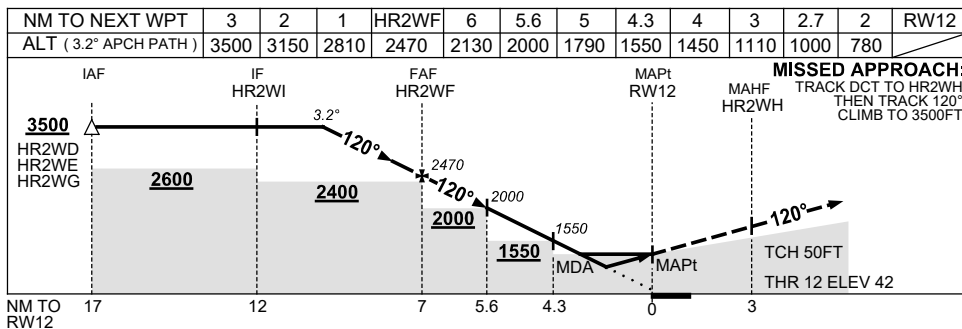
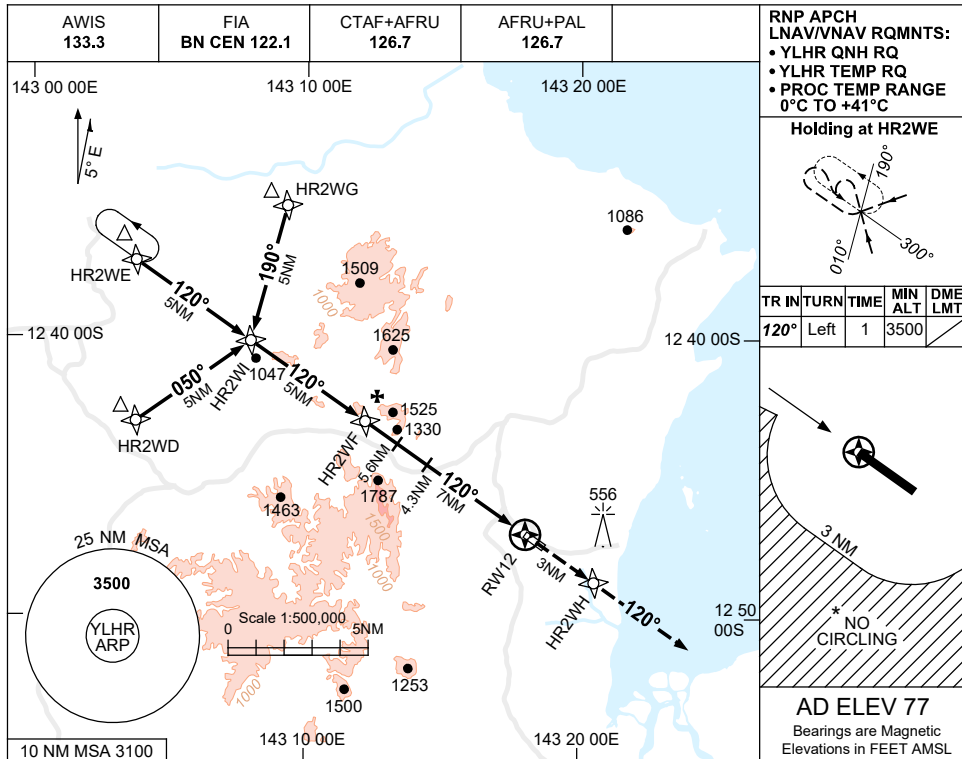
LHRAD01-177

USE QNH

RNP RWY 12

30 NOV 2023

LOCKHART RIVER, QLD (YLHR)



CATEGORY	A	B	C	D
LNAV/VNAV	780 (738-4.0)			NOT APPLICABLE
LNAV	1000 (958-5.0)			
CIRCLING *	1160 (1083-2.4)		1390 (1313-4.0)	
ALTERNATE	(1583-4.4)		(1813-6.0)	

- NOTES**
- MAX IAS:
INITIAL : 210KT.
 - NO CIRCLING
BEYOND 3NM STH
OF RWY 12/30.
 - COLOUR: SEE
SPEC NOTICES.

Changes: THR ELEV, MINIMA, WPT NAMING CONVENTION, NEW LOGO, Editorial.

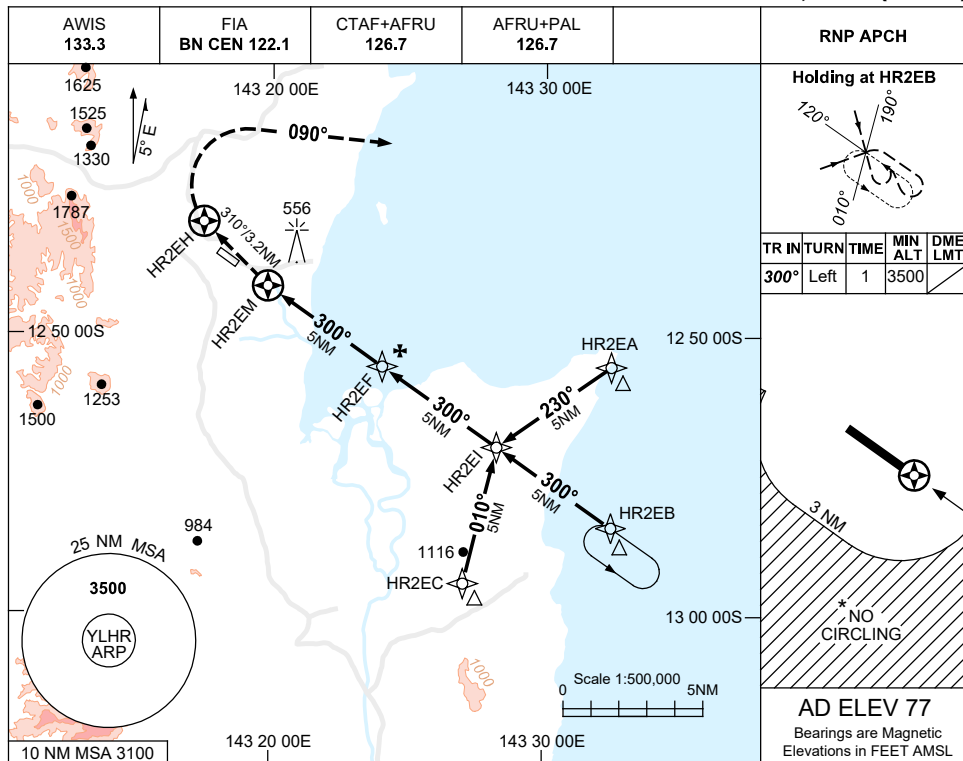
LHRGN01-177

USE QNH

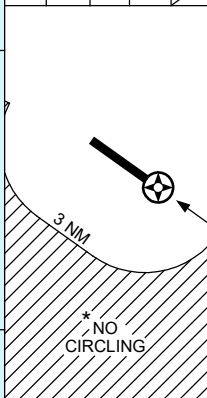
RNP Z RWY 30

30 NOV 2023

LOCKHART RIVER, QLD (YLHR)



TR	IN	TURN	TIME	MIN	DME
				ALT	LMT
300°	Left	1		3500	



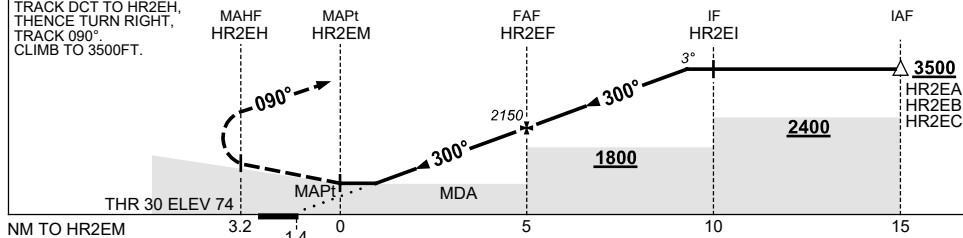
AD ELEV 77

Bearings are Magnetic
Elevations in FEET AMSL

NM TO NEXT WPT	HR2EM	0.9	1	2	3	4	HR2EF	1	2	3	4.3		
ALT (3° APCH PATH)		830	870	1190	1510	1830	2150	2460	2780	3100	3500		

MISSED APPROACH:

TRACK DCT TO HR2EH,
THENCE TURN RIGHT,
TRACK 090°.
CLIMB TO 3500FT.



NOTES

- MAX IAS:
INITIAL : 210KT.
MAP TURN: 200KT.
- NO CIRCLING
BEYOND 3NM STH
OF RWY 12/30.
- COLOUR: SEE
SPEC NOTICES.

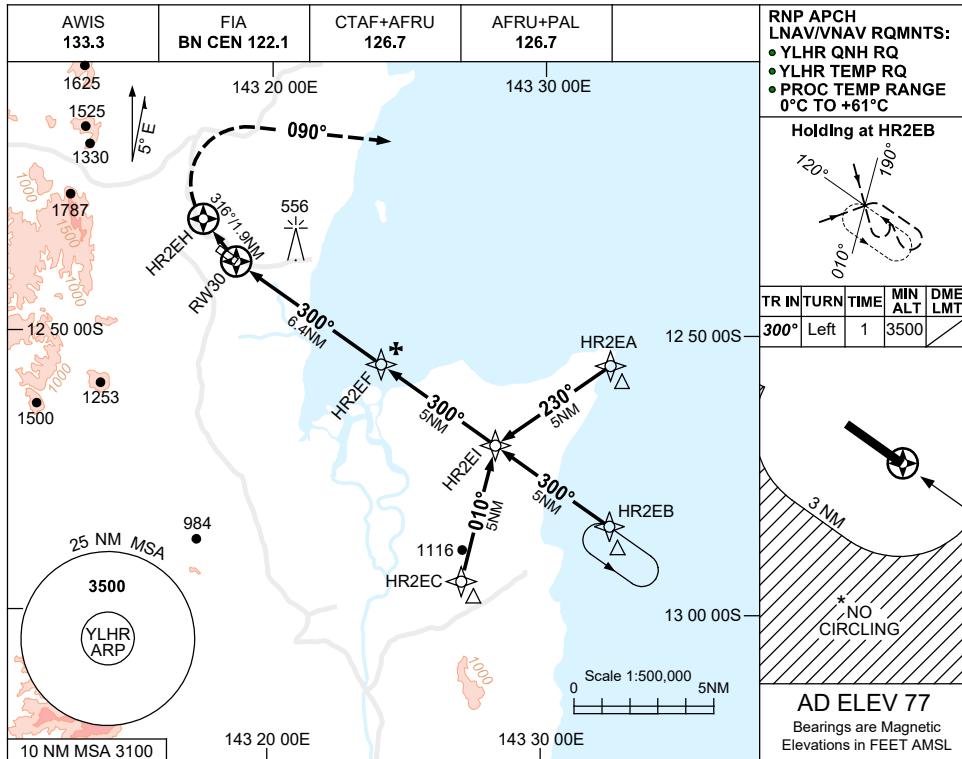
CATEGORY	A	B	C	D
LNAV	830 (753-4.3)			NOT APPLICABLE
CIRCLING *	1160 (1083-2.4)		1390 (1313-4.0)	
ALTERNATE	(1583-4.4)		(1813-6.0)	

Changes: THR ELEV, WPT NAMING CONVENTION, NEW LOGO, Editorial.

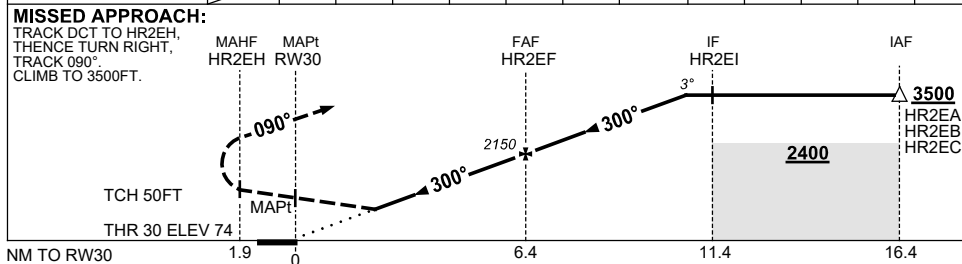
LHRGN02-177

USE QNH RNP Y RWY 30 (LNAV/VNAV ONLY)
LOCKHART RIVER, QLD (YLHR)

30 NOV 2023



NM TO NEXT WPT	RW30	1.7	2	3	4	5	6	HR2EF	1	2	3	4.3	
ALT (3° APCH PATH)		670	770	1080	1400	1720	2030	2150	2460	2780	3100	3500	



NOTES

CATEGORY	A	B	C	D	
LNAV/VNAV(4% MAP)	670 (596-3.4)			NOT APPLICABLE	
LNAV/VNAV(2.5% MAP)	770 (696-4.0)				
CIRCLING *	1160 (1083-2.4)		1390 (1313-4.0)		
ALTERNATE	(1583-4.4)		(1813-6.0)		

1. MAX IAS:
 INITIAL : 210KT.
 MAP TURN: 200KT.
- *2. NO CIRCLING BEYOND 3NM STH OF RWY 12/30.
3. COLOUR: SEE SPEC NOTICES.

Changes: DA, THR ELEV, WPT NAMING CONVENTION, NEW LOGO, Editorial.

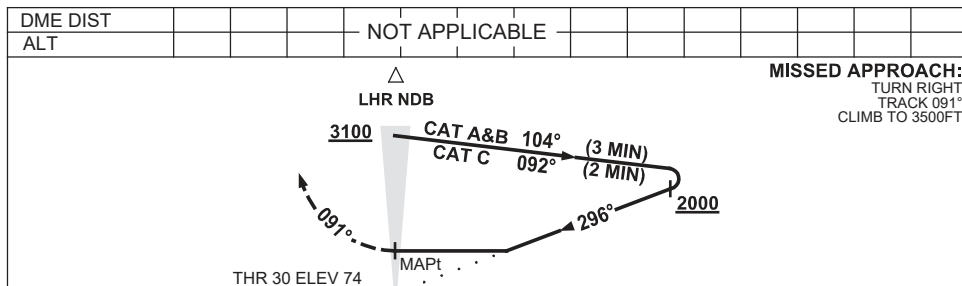
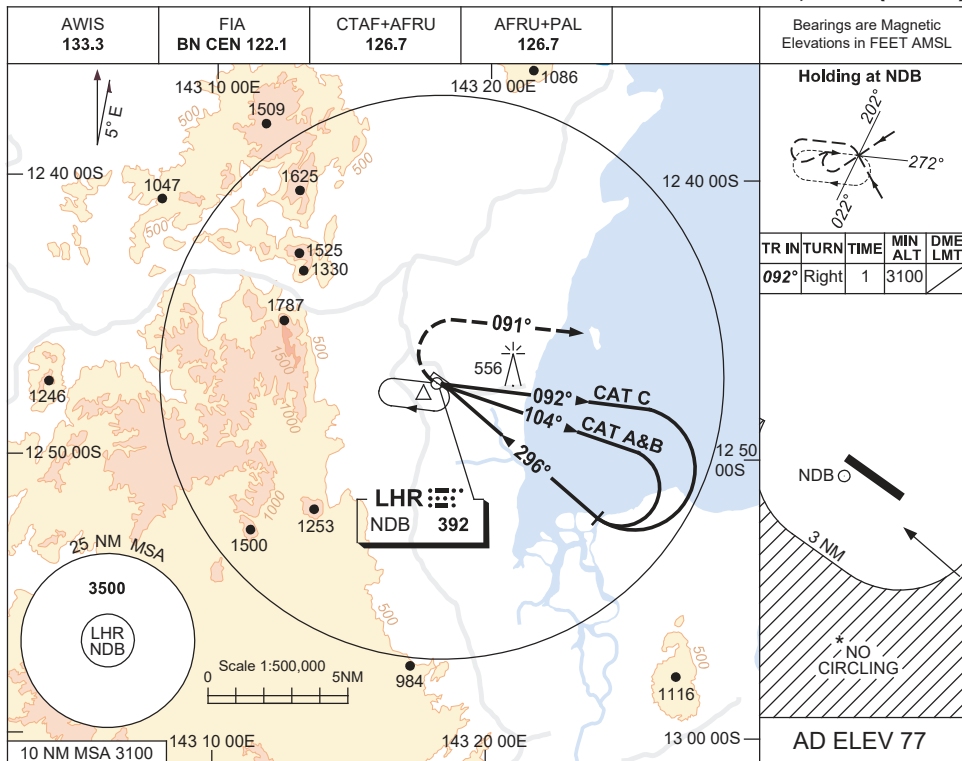
LHRGN03-177

USE QNH

NDB RWY 30

30 NOV 2023

LOCKHART RIVER, QLD (YLHR)



CATEGORY	A	B	C	D
S-I NDB	1010 (933-5.0)			NOT APPLICABLE
CIRCLING*	1160 (1083-2.4)	1390 (1313-4.0)		
ALTERNATE	(1583-4.4)	(1813-6.0)		

- NOTES**
- MAX IAS: INITIAL : 210KT.
 - NO CIRCLING BEYOND 3NM STH OF RWY 12/30.
 - COLOUR: SEE SPEC NOTICES.

Changes: THR ELEV, NOTE 1, NEW LOGO.

LHRN01-177