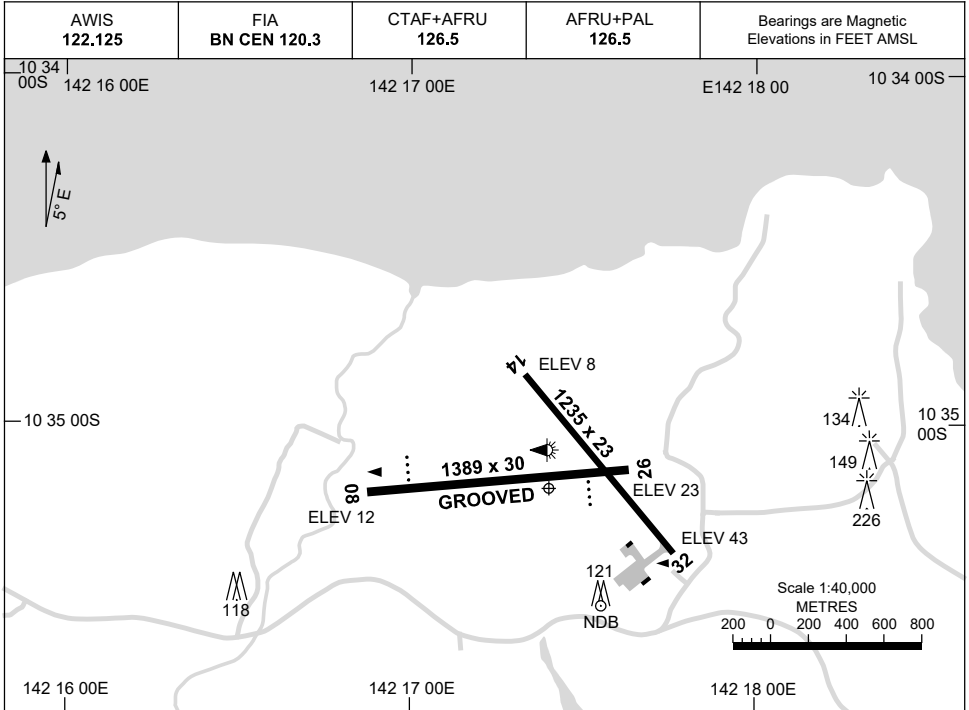


15 JUN 2023

AD ELEV 43
10 35 11S 142 17 24E

AERODROME CHART
HORN ISLAND, QLD (YHID)



	AERODROME LIGHTING
RWY	TAXIWAY : BLUE EDGE RL : AFRU+PAL 126.5 , SDBY (15 SEC) FOR RWY 08/26 ONLY , PTBL PN.
08 <small>080</small>	PAPI 3.0° 44FT LIRL
<small>260</small> 26	PAPI 3.2° 50FT LIRL
14 <small>135</small>	NIL
<small>375</small> 32	NIL

NOTES

Changes: NOTE.

HIDAD01-175

GNSS ARRIVAL PROCEDURES HORN ISLAND, QLD (YHID) Page 1

27 FEB 2020

AWIS 122.125	FIA BN CEN 120.3	CTAF+AFRU 126.5	AFRU+PAL 126.5		Bearings are Magnetic Elevations in FEET AMSL
-----------------	---------------------	--------------------	-------------------	--	--

25 NM MSA
B-165°
2400
HD NDB
B-216°
2000

REFERENCE WAYPOINT HID NDB

HID NDB 356

* NO CIRCLING IN SECTOR SOUTH OF RWY 26 AND EAST OF RWY 32. LANDING NOT PERMITTED RWY 32.

10 NM MSA 2000

AD ELEV 43

SECTOR A

MISSED APPROACH:
CLIMB ON TRACK TO 2400FT.

NM TO NDB	25	16	7	5	4	0													
CIRCLING MINIMA	A,B: 970-2.4		C: 1030-4.0		D: N/A														
NM TO NDB	5.1	5	4	3	2.1	2	1.8												
ALT (3° APCH PATH)	2000	1970	1650	1330	1030	1010	970												

SECTOR B

MISSED APPROACH:
CLIMB ON TRACK TO 2000FT.

NM TO NDB	25	15	9	5	0														
CIRCLING MINIMA	A,B: 970-2.4		C: 1030-4.0		D: N/A														
NM TO NDB	7.2	7	6	5	4	3	2.9	2.7											
ALT (3° APCH PATH)	2400	2340	2020	1700	1380	1060	1030	970											

SECTOR C

MISSED APPROACH:
CLIMB ON TRACK TO 2000FT.

NM TO NDB	25	15	6	5	0														
CIRCLING MINIMA	A,B: 1000-2.4		C: 1030-4.0		D: N/A														
NM TO NDB	5.8	5	4	3	2.8	2.7													
ALT (3° APCH PATH)	2000	1750	1430	1110	1030	1000													

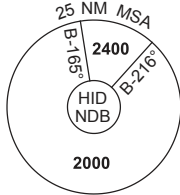
Changes: CAT C MINIMA, SECTOR B MIN ALT, DIST/ALT.

HIDG01-162

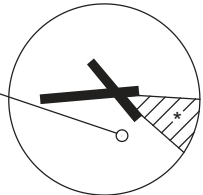
GNSS ARRIVAL PROCEDURES HORN ISLAND, QLD (YHID) Page 2

27 FEB 2020

AWIS 122.125	FIA BN CEN 120.3	CTAF+AFRU 126.5	AFRU+PAL 126.5		Bearings are Magnetic Elevations in FEET AMSL
-----------------	---------------------	--------------------	-------------------	--	--



REFERENCE WAYPOINT HID NDB



* NO CIRCLING IN SECTOR SOUTH OF RWY 26 AND EAST OF RWY 32.
LANDING NOT PERMITTED RWY 32.

10 NM MSA 2000

AD ELEV 43

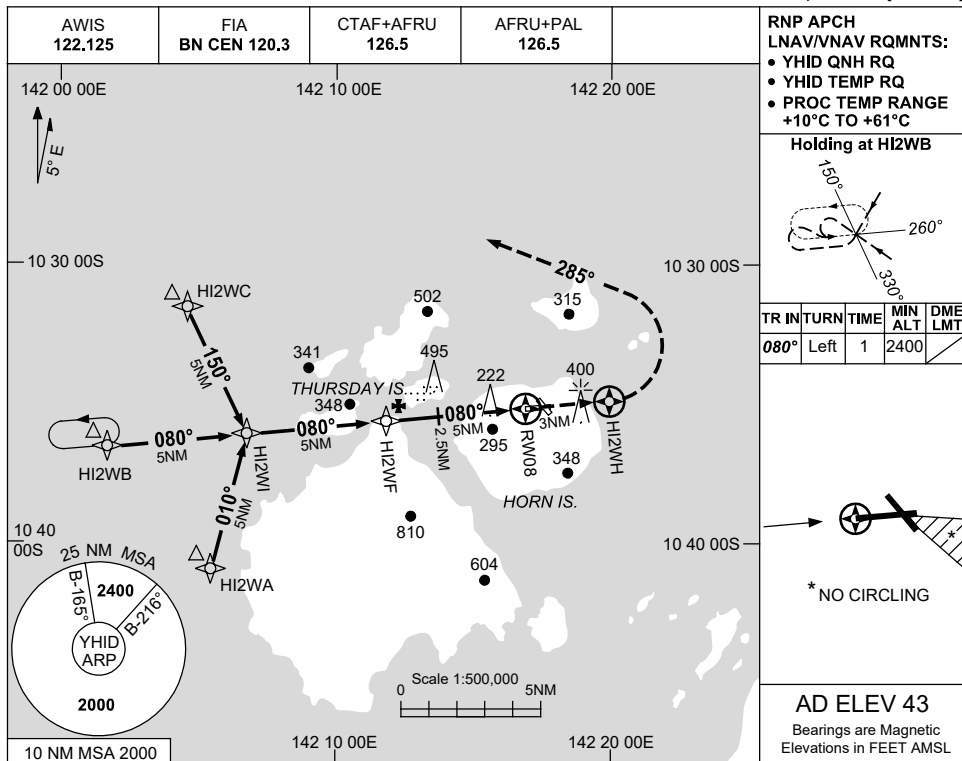
SECTOR D						MISSED APPROACH:											
						CLIMB ON TRACK TO 2400FT.											
NM TO NDB	35	25	16	7	6	4	0										
CIRCLING MINIMA	A,B: 970-2.4			C: 1030-4.0		D: N/A											
NM TO NDB	6	5	4	3	2.9	2.7											
ALT (3° APCH PATH)	2000	1700	1380	1060	1030	970											

USE QNH

RNP RWY 08

HORN ISLAND, QLD (YHID)

7 SEP 2023



RNP APCH LNAV/VNAV RQMNTS:

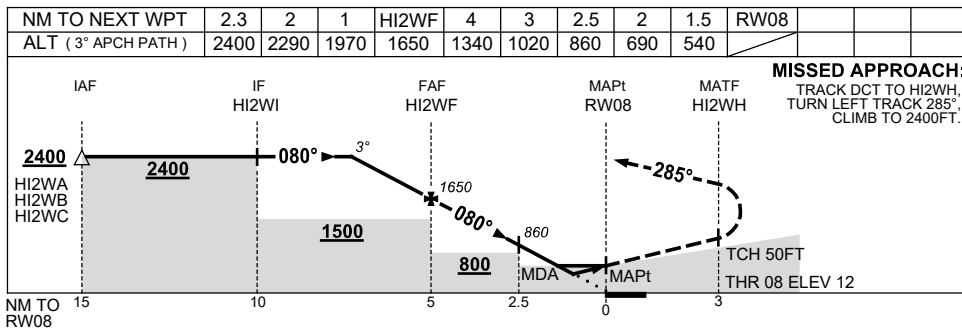
- YHID QNH RQ
- YHID TEMP RQ
- PROC TEMP RANGE +10°C TO +61°C

Holding at HI2WB

TR	TURN	TIME	MIN ALT	DME LMT
080°	Left	1	2400	

*** NO CIRCLING**

AD ELEV 43
Bearings are Magnetic
Elevations in FEET AMSL



NOTES

CATEGORY	A	B	C	D
LNAV/VNAV		540 (528-3.0)		NOT APPLICABLE
LNAV		690 (678-3.9)		
CIRCLING *	970 (927-2.4)		1030 (987-4.0)	
ALTERNATE	(1427-4.4)		(1487-6.0)	

1. MAX IAS: INITIAL : 210KT.
2. NO CIRCLING IN SECTOR SOUTH OF RWY 26 AND EAST OF RWY 32.
3. LANDING NOT PERMITTED RWY 32.

Changes: WPT NAMING CONVENTION, MIN ALT.

HIDGN01-176

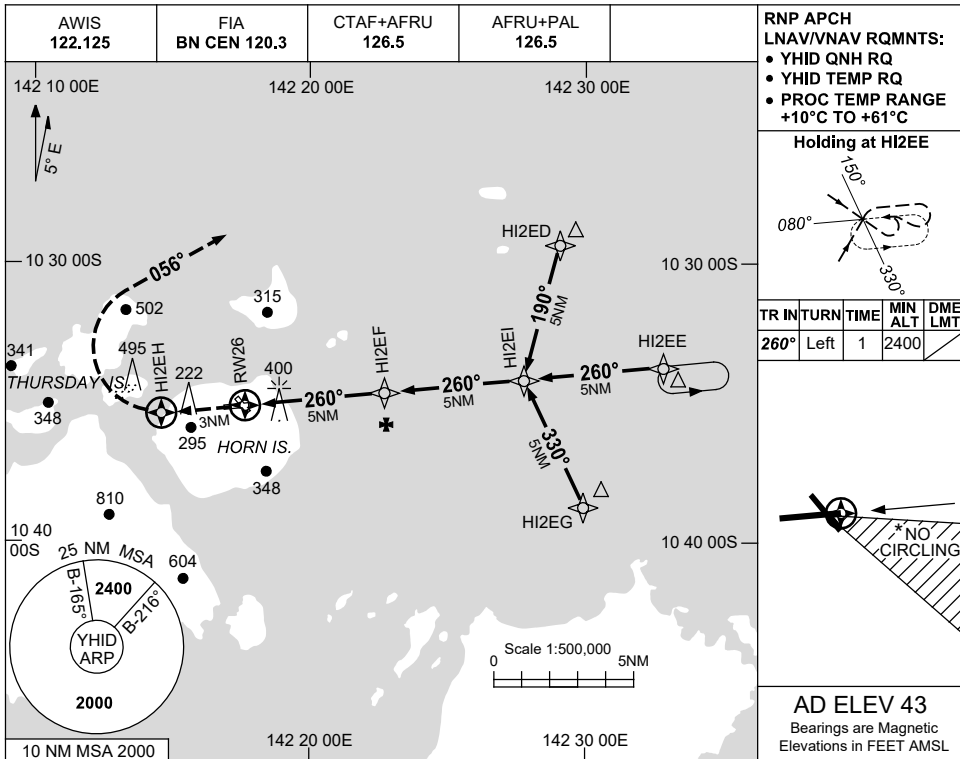


USE QNH

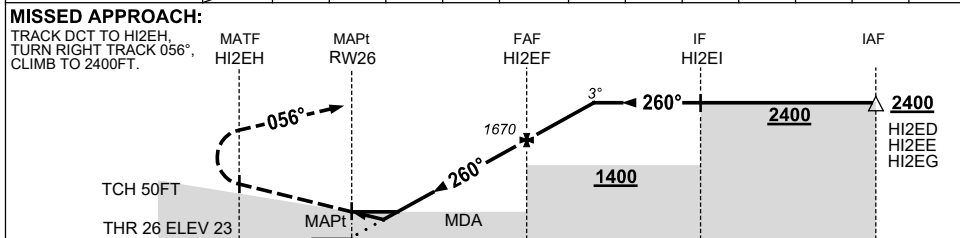
RNP RWY 26

HORN ISLAND, QLD (YHID)

7 SEP 2023



NM TO NEXT WPT	RW26	1.9	2.4	3	4	HI2EF	1	2.3				
ALT (3° APCH PATH)		670	830	1030	1350	1670	1980	2400				



NOTES

- MAX IAS: INITIAL : 210KT.
- * NO CIRCLING IN SECTOR SOUTH OF RWY 26 AND EAST OF RWY 32.
- LANDING NOT PERMITTED RWY 32.
- VERTICAL PATH NOT ALIGNED WITH PAPI RWY 26.

CATEGORY	A	B	C	D
LNAV/VNAV	670 (647-3.7)			NOT APPLICABLE
LNAV	830 (807-4.6)			
CIRCLING *	970 (927-2.4)		1030 (987-4.0)	
ALTERNATE	(1427-4.4)		(1487-6.0)	

Changes: WPT NAMING CONVENTION.

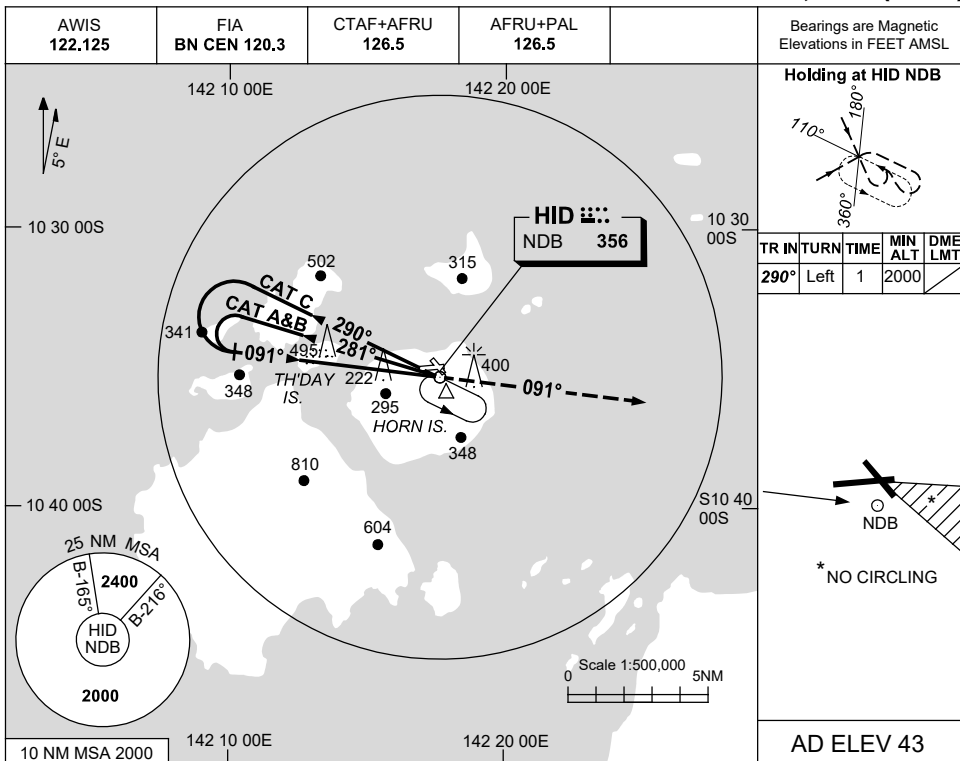
HIIDGN02-176

USE QNH

NDB RWY 08

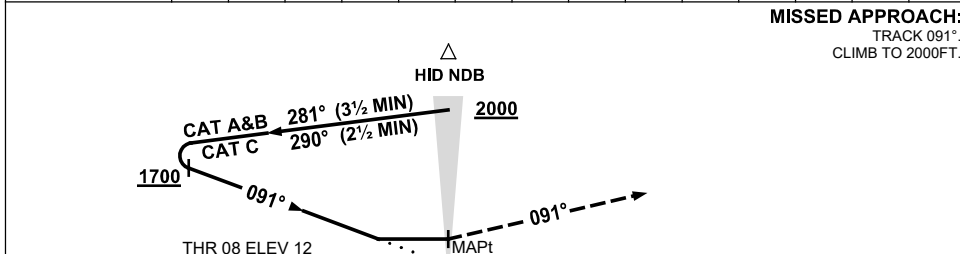
HORN ISLAND, QLD (YHID)

7 NOV 2019



DME DIST	NOT APPLICABLE				
ALT					

MISSED APPROACH:
 TRACK 091°.
 CLIMB TO 2000FT.



NOTES

1. MAX IAS:
 INITIAL :
 CAT A&B 140KT.
 CAT C 210KT.
- *2. NO CIRCLING IN SECTOR SOUTH OF RWY 26 AND EAST OF RWY 32.
3. LANDING NOT PERMITTED RWY 32.

CATEGORY	A	B	C	D
S-I NDB	930 (918-5.0)			NOT APPLICABLE
CIRCLING *	970 (927-2.4)		1030 (987-4.0)	
ALTERNATE	(1427-4.4)		(1487-6.0)	

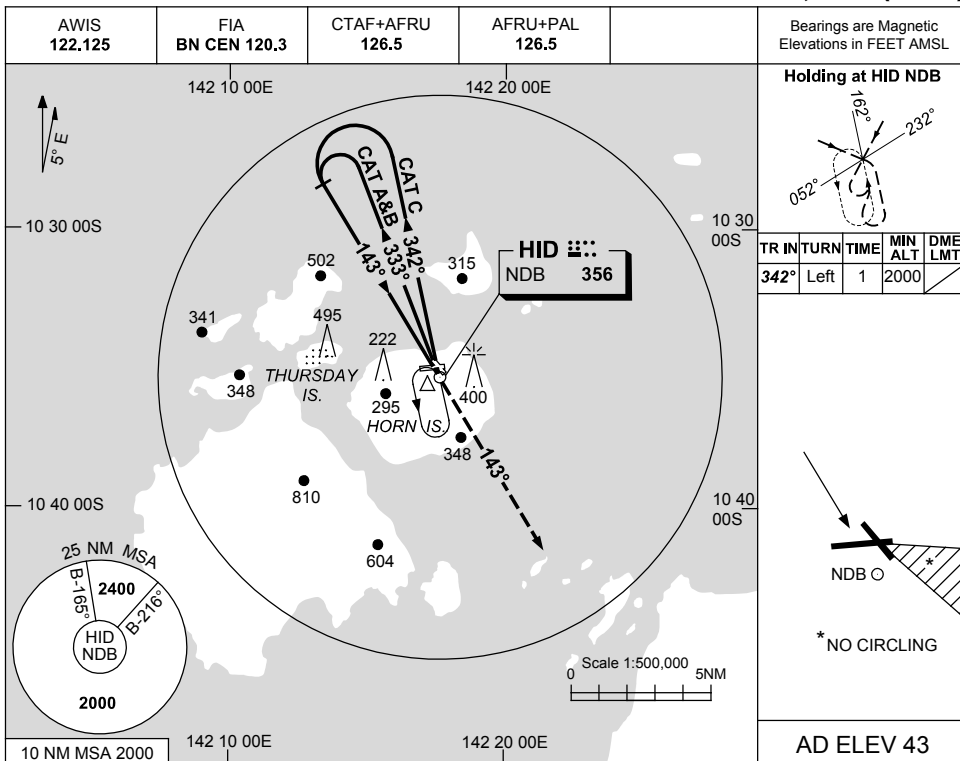
Changes: CAT C CIRCLING MINIMA, ALTERNATE CAT C MINIMA.

HIDNB01-161

USE QNH

NDB RWY 14
HORN ISLAND, QLD (YHID)

7 SEP 2023

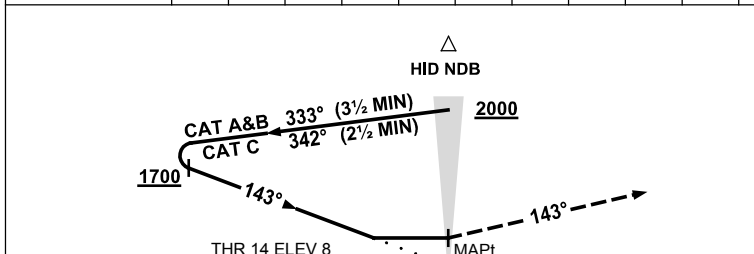


TR	IN	TURN	TIME	MIN ALT	DME LMT
342°	Left	1	2000		

AD ELEV 43

DME DIST	NOT APPLICABLE				
ALT					

MISSED APPROACH:
 TRACK 143°. CLIMB TO 2000FT.



- NOTES**
- MAX IAS:
 INITIAL :
 CAT A&B 140KT.
 CAT C 210KT.
 - NO CIRCLING IN SECTOR SOUTH OF RWY 26 AND EAST OF RWY 32.
 - LANDING NOT PERMITTED RWY 32.
 - CAUTION: HOLDING PATTERN OVERLAID BY YNPE RNP W PROC AND HOLDING PATTERN. SEPARATION NOT ASSURED.

CATEGORY	A	B	C	D
S-I NDB	970 (962-5.0)			NOT APPLICABLE
CIRCLING *	970 (927-2.4)		1030 (987-4.0)	
ALTERNATE	(1427-4.4)		(1487-6.0)	

Changes: CAUTION NOTE.

HIDNB02-176