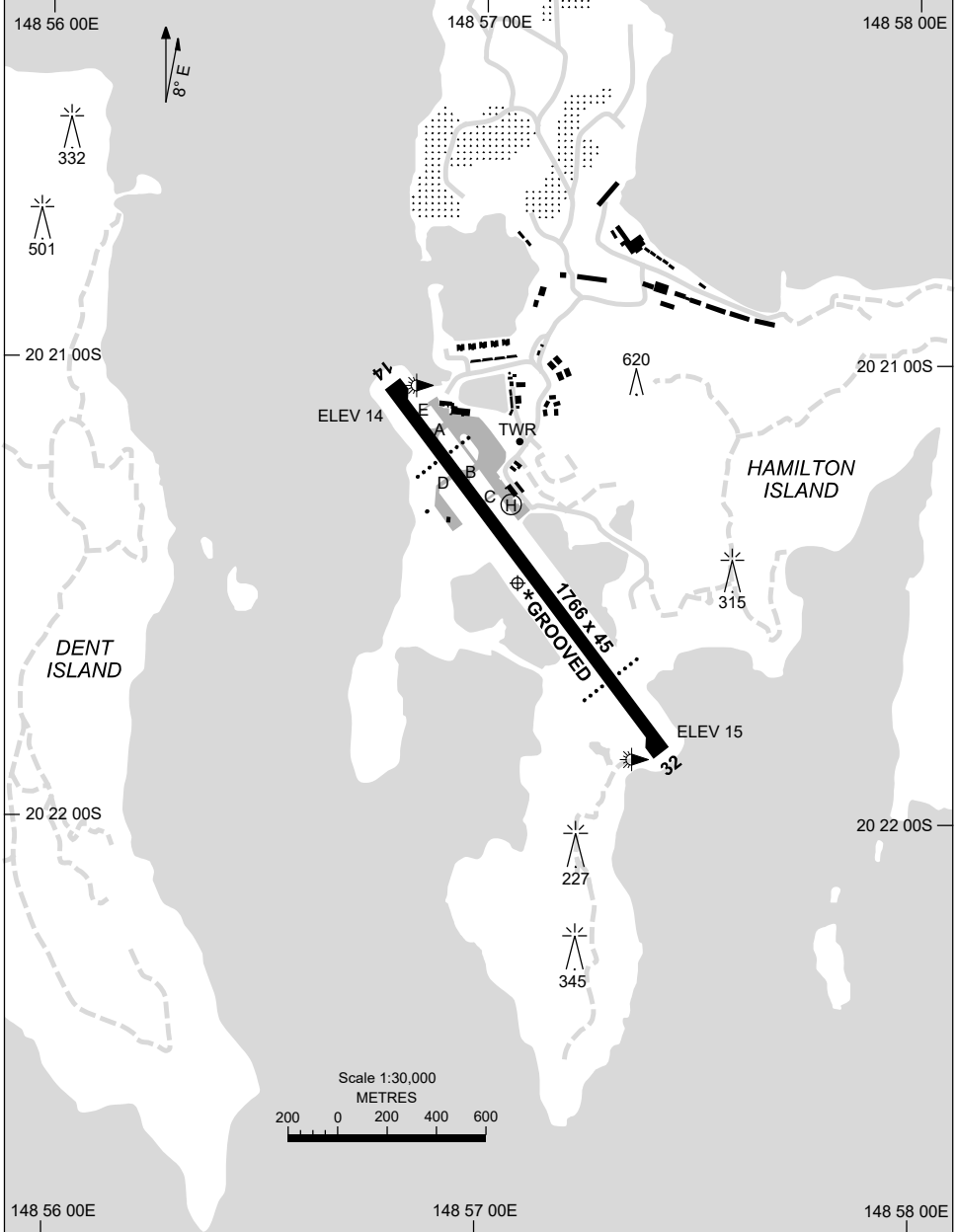


AD ELEV 15  
20 21 29S 148 57 06E

AERODROME CHART - Page 1  
**HAMILTON ISLAND, QLD (YBHM)**

1 DEC 2022

AWIS 124.75	ATIS 128.35	TWR 118.7	CTAF+AFRU (AH) 127.85	FIA (AH) BN CEN 135.5	Bearings are Magnetic Elevations in FEET AMSL
----------------	----------------	--------------	--------------------------	--------------------------	--



Changes: THR 14 ELEV.

BHMAD01-173

30 NOV 2023

AD ELEV 15  
20 21 29S 148 57 06E

AERODROME CHART - Page 2  
**HAMILTON ISLAND, QLD (YBHM)**

AWIS 124.75	ATIS 128.35	TWR 118.7	CTAF+AFRU (AH) 127.85	FIA (AH) BN CEN 135.5	Bearings are Magnetic Elevations in FEET AMSL
<b>RWY</b>	<b>AERODROME LIGHTING</b>				
	TAXIWAY : BLUE EDGE TWY A, B ONLY RL : MAN (PN)** , SDBY (60 SEC) , : PTBL FIXED WING ACFT ONLY (EMERG ONLY, 60 MIN PN, CTC ARO: 0414 594 592)				
<b>14</b> <sup>135</sup> <sub>315</sub> <b>32</b>	PAPI BOTH SIDES 3.0° 47FT MIRL (PN)** PAPI BOTH SIDES 3.0° 48FT MIRL (PN)**				
<p><b>NOTES</b></p> <ul style="list-style-type: none"> <li>* 1. RWY GROOVED FULL WIDTH.</li> <li>** 2. MAN SWITCH BY AD OPR.</li> <li>3. FIA FREQ 135.5 AVBL CIRCUIT AREA.</li> <li>4. AWIS REQUIRES 2 SEC TRANSMIT PULSES TO ACTIVATE.</li> </ul>					

Changes: PTBL LIGHTING, NOTE 1 REMOVED, Editorial.

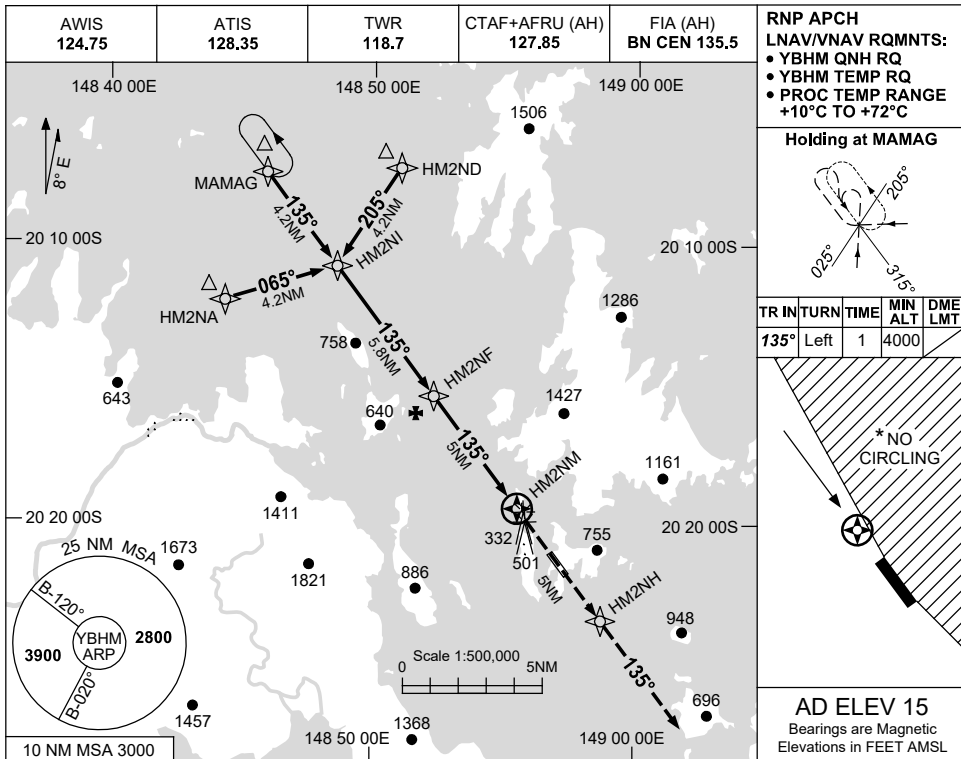
BHMAD02-177

USE QNH

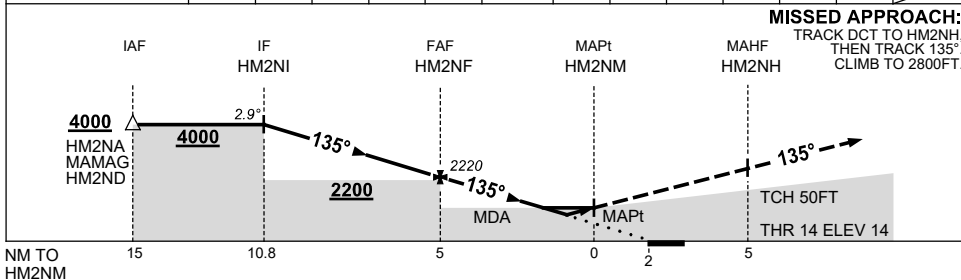
RNP Z RWY 14

15 JUN 2023

**HAMILTON ISLAND, QLD (YBHM)**



NM TO NEXT WPT	HM2NI	4	3	2	1	HM2NF	4	3	2	1	0.5	0.2	HM2NM
ALT (2.9° APCH PATH)	4000	3450	3140	2830	2530	2220	1910	1600	1300	990	830	740	



**NOTES**

CATEGORY	A	B	C	D
LNAV/VNAV	<b>740 (726-4.3)</b>			
LNAV	<b>830 (815-4.8)</b>			
CIRCLING *	<b>1040 (1025-2.4)</b>	<b>1140 (1125-4.0)</b>	<b>1490 (1475-5.0)</b>	
ALTERNATE	<b>(1525-4.4)</b>		<b>(1625-6.0) (1975-7.0)</b>	

1. MAX IAS: INITIAL : 210KT.
- \* 2. NO CIRCLING EAST OF RWY 14/32.

Changes: FROM SUP H05/23.

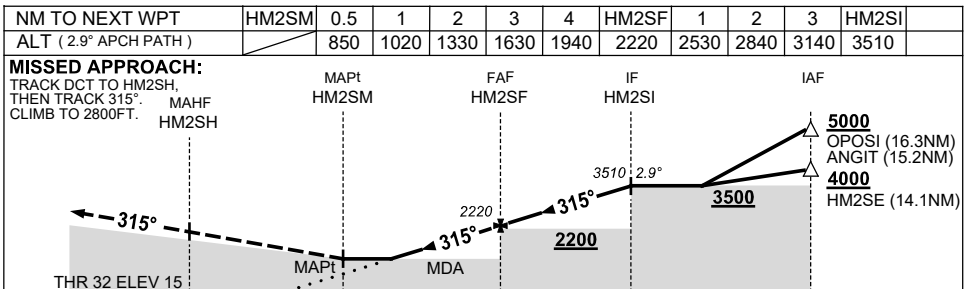
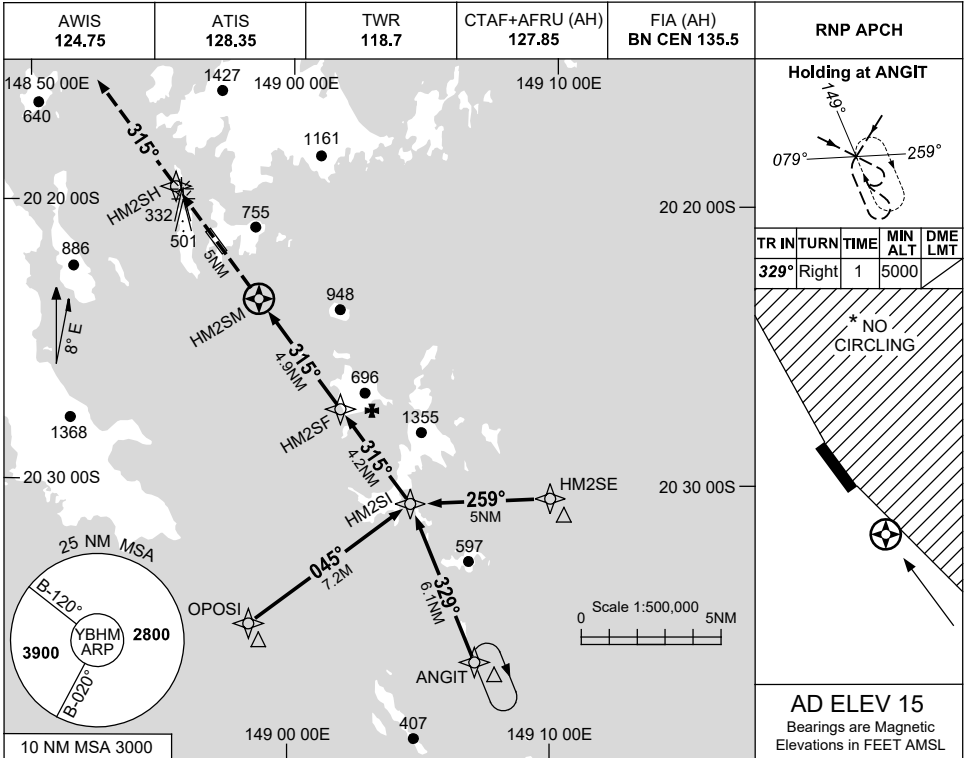
BHMGNO1-175

USE QNH

RNP Z RWY 32

15 JUN 2023

HAMILTON ISLAND, QLD (YBHM)



**NOTES**

1. MAX IAS: INITIAL : 210KT.
- \* 2. NO CIRCLING EAST OF RWY 14/32.

CATEGORY	A	B	C	D
LNAV	<b>850 (835-4.9)</b>			
CIRCLING*	<b>1040 (1025-2.4)</b>		<b>1140 (1125-4.0)</b>	
ALTERNATE	(1525-4.4)		(1975-7.0)	

Changes: FROM SUP H05/23.

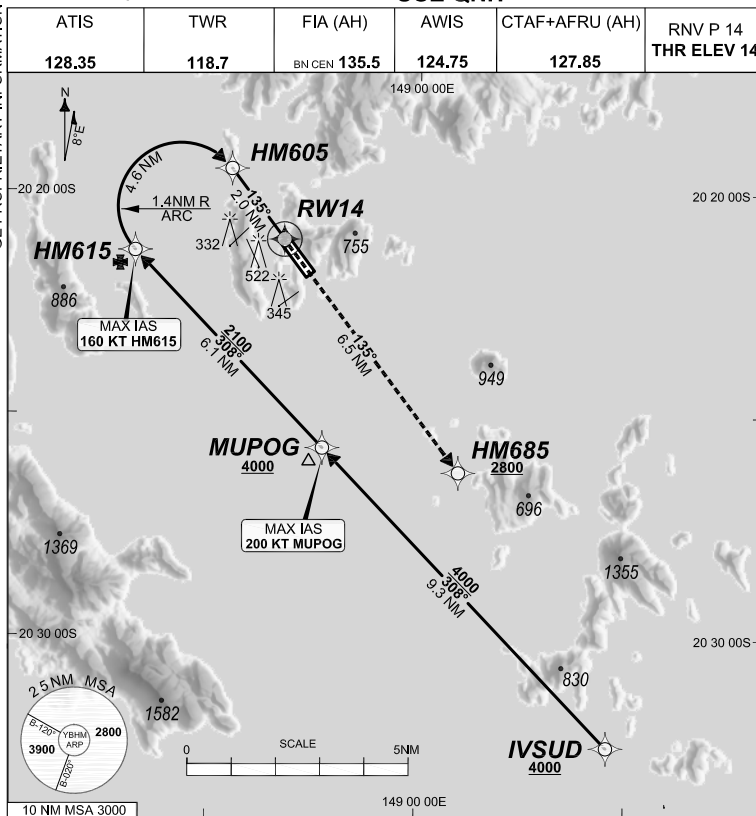
BHMGNO2-175

FOR CASA APPROVED  
OPERATORS ONLY

24 MAR 2022

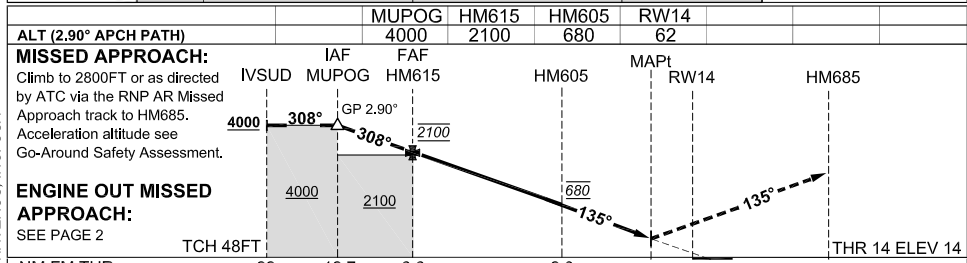
USE QNH HAMILTON ISLAND, QLD (YBHM)

GE PROPRIETARY INFORMATION



ATIS	TWR	FIA (AH)	AWIS	CTAF+AFRU (AH)	RNP P 14 THR ELEV 14	RNP AR APCH - RF RQ - YBHM ACT QNH RQ - YBHM ACT TEMP RQ - PROC TEMP RANGE +14°C TO +36°C
128.35	118.7	BN CEN 135.5	124.75	127.85		Holding as directed by ATC
TR	INTURN TIME	MIN ALT	DME	LMT		

AD ELEV 15  
Bearings are Magnetic  
Elevations in FEET AMSL



**NOTES**

- PROC AVBL up to MLW.
- Lateral transition to MAP must not be initiated prior to DA/H PSN.
- APCH Path does not coincide with PAPI glide path 3°.
- Transient yacht masts may infringe RWY 14 visual approach slope clearance.
- See Engineering Report for Minimum MAP gradient (AE) to 2800 FT.

CATEGORY	A	B	C	D
RNP (0.30)	NOT APPLICABLE		DA(H) 669' (655')-3.7	
RNP ( )	NOT APPLICABLE		DA(H) ( ) - .	
RNP ( )	NOT APPLICABLE		DA(H) ( ) - .	
RNP ( )	NOT APPLICABLE		DA(H) ( ) - .	
CIRCLING			NOT AUTHORISED	

202109301559 COPYRIGHT 2021 NAVERUS, INC. USA

Revision: From SUP H97/21, chart title BHMGN03-170

**DO NOT USE FOR NAVIGATION**

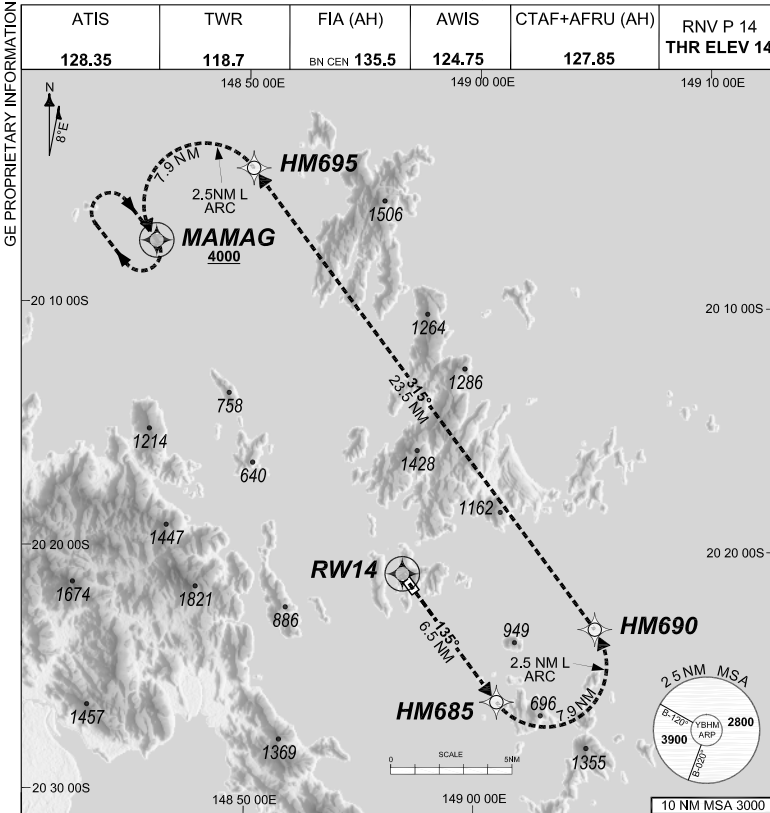
Prepared by GE Aviation



**FOR CASA APPROVED OPERATORS ONLY**

24 MAR 2022

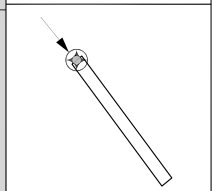
**USE QNH HAMILTON ISLAND, QLD (YBHM)**



**RNP AR APCH**  
 - RF RQ  
 - YBHM ACT QNH RQ  
 - YBHM ACT TEMP RQ  
 - PROC TEMP RANGE +14°C TO +36°C

**Holding at MAMAG**

TR	INTURN	TIME	MIN ALT	DME LMT
135°	Right	1'	4000	



**AD ELEV 15**  
 Bearings are Magnetic Elevations in FEET AMSL

**ENGINE OUT MISSED APPROACH:**

Track via the RNP AR Engine Out Missed Approach track to MAMAG and hold as published.

Acceleration altitude see Go-Around Safety Assessment.  
 Continue to climb in hold as necessary to 4000FT, or as directed by ATC. EO hold only, not contained in CTA. Maximum holding speed **230 KIAS**.

20210929/1239 COPYRIGHT 2021 NAVERUS, INC. USA

Revision: From SUP H97/21, chart title

BHMG04-170

**DO NOT USE FOR NAVIGATION**

Prepared by GE Aviation

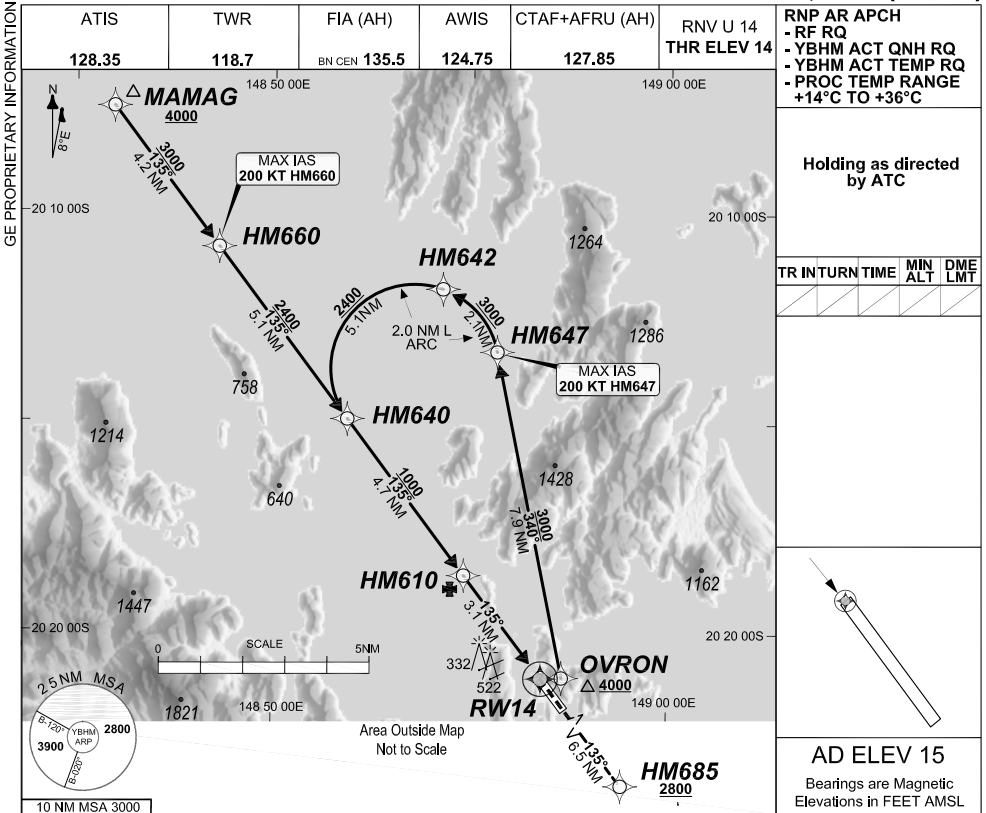


FOR CASA APPROVED OPERATORS ONLY

24 MAR 2022

USE QNH

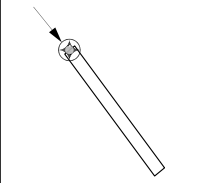
HAMILTON ISLAND, QLD (YBHM)



RNP AR APCH  
 - RF RQ  
 - YBHM ACT QNH RQ  
 - YBHM ACT TEMP RQ  
 - PROC TEMP RANGE +14°C TO +36°C

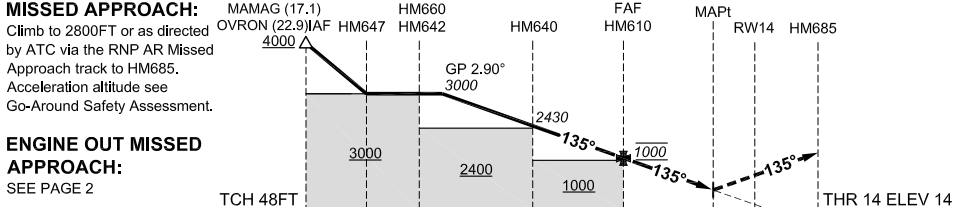
Holding as directed by ATC

TR	INTURN TIME	MIN ALT	DME LMT



AD ELEV 15  
 Bearings are Magnetic Elevations in FEET AMSL

ALT (2.90° APCH PATH)	HM660	HM642	HM640	HM610	RW14
	4000	4000	2430	1000	62



**ENGINE OUT MISSED APPROACH:**  
 SEE PAGE 2

NM FM THR	15	12.9	7.8	3.1	6.5
TCH 48FT					
THR 14 ELEV 14					

**NOTES**

- PROC AVBL up to MLW.
- Lateral transition to MAP must not be initiated prior to DA/H PSN.
- APCH Path does not coincide with PAPI glide path 3°.
- Transient yacht masts may infringe RWY 14 visual approach slope clearance.
- See Engineering Report for Minimum MAP gradient (AE) to 2800 FT.

CATEGORY	A	B	C	D
RNP (0.30)	NOT APPLICABLE		DA(H) 653' (639')-3.6	
RNP ( )	NOT APPLICABLE		DA(H) ( ) - .	
RNP ( )	NOT APPLICABLE		DA(H) ( ) - .	
RNP ( )	NOT APPLICABLE		DA(H) ( ) - .	
CIRCLING			NOT AUTHORISED	

20210930/1556 COPYRIGHT 2021 NAVERUS, INC. USA

Revision: From SUP H97/21, chart title

BHMGN05-170

**DO NOT USE FOR NAVIGATION**

Prepared by GE Aviation



**FOR CASA APPROVED  
OPERATORS ONLY**

**24 MAR 2022**

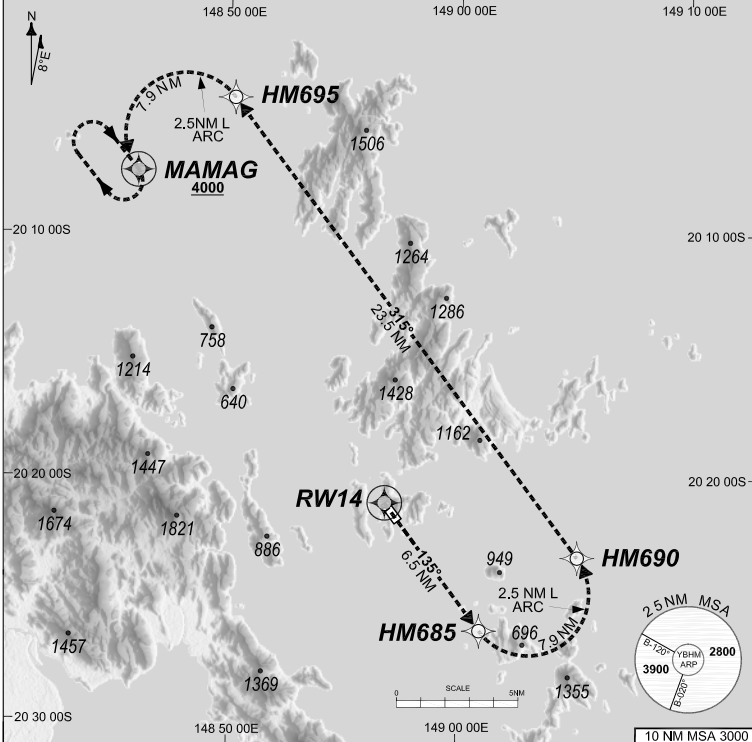
**USE QNH**

**HAMILTON ISLAND, QLD (YBHM)**

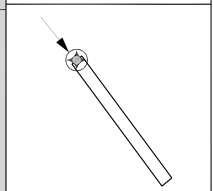
GE PROPRIETARY INFORMATION

ATIS <b>128.35</b>	TWR <b>118.7</b>	FIA (AH) BN CEN <b>135.5</b>	AWIS <b>124.75</b>	CTAF+AFRU (AH) <b>127.85</b>	RNV U 14 THR ELEV 14
-----------------------	---------------------	---------------------------------	-----------------------	---------------------------------	-------------------------

**RNP AR APCH**  
 - RF RQ  
 - YBHM ACT QNH RQ  
 - YBHM ACT TEMP RQ  
 - PROC TEMP RANGE  
 +14°C TO +36°C



TR IN	TURN	TIME	MIN ALT	DME LMT
135°	Right	1'	4000	



**AD ELEV 15**  
 Bearings are Magnetic  
 Elevations in FEET AMSL

**ENGINE OUT MISSED APPROACH:**

Track via the RNP AR Engine Out Missed Approach track to MAMAG and hold as published.

Acceleration altitude see Go-Around Safety Assessment.  
 Continue to climb in hold as necessary to 4000FT, or as directed by ATC. EO hold only, not contained in CTA. Maximum holding speed **230 KIAS**.

2021/09/29/1240 COPYRIGHT © 2021 NAVERUS, INC. USA

Revision: From SUP H97/21, chart title

BHMG06-170

**DO NOT USE FOR NAVIGATION**

Prepared by GE Aviation



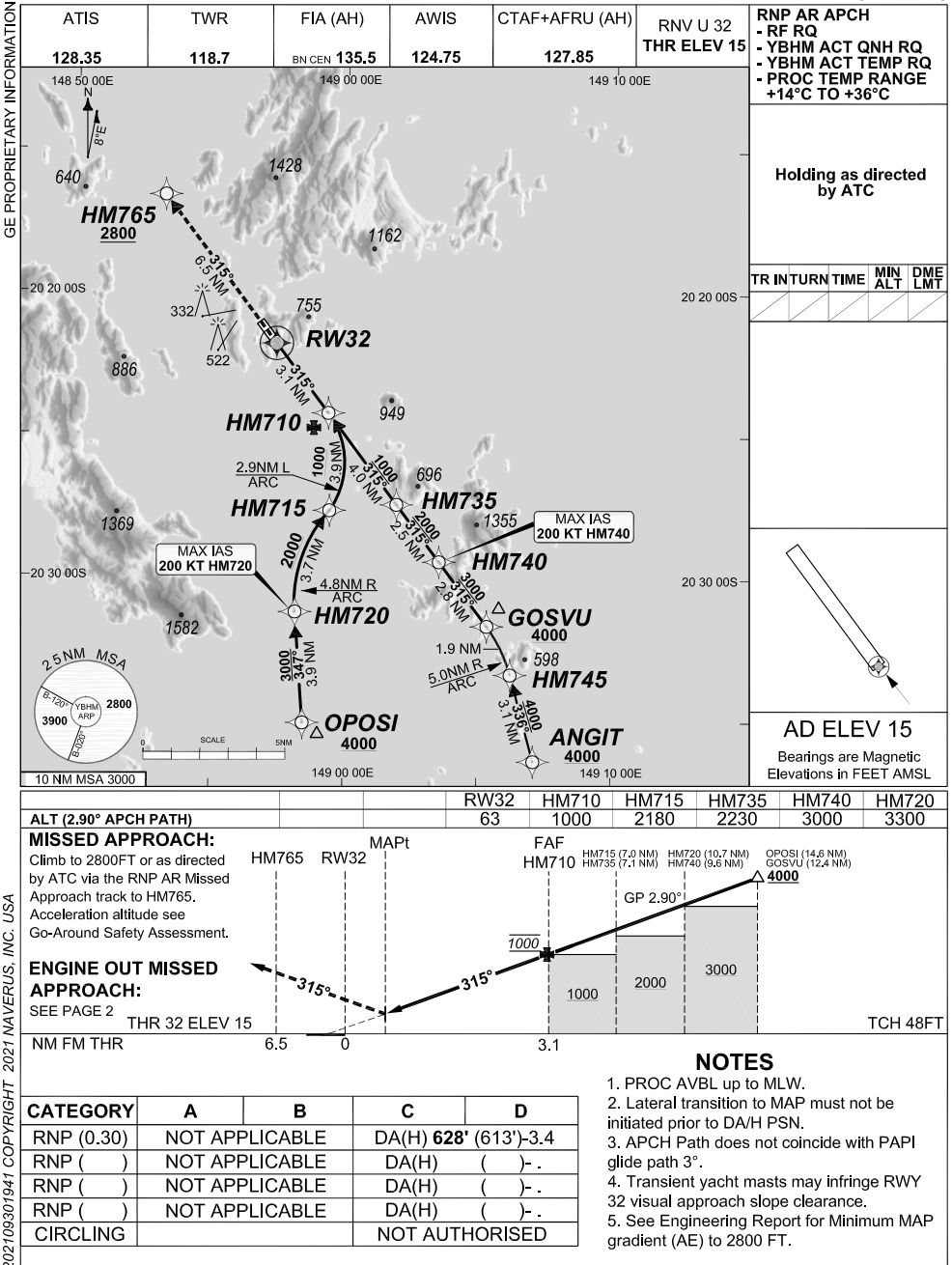


FOR CASA APPROVED OPERATORS ONLY

24 MAR 2022

USE QNH

HAMILTON ISLAND, QLD (YBHM)



202109301941 COPYRIGHT 2021 NAVERUS, INC. USA

Revision: From SUP H97/21, chart title

BHMG07-170

**DO NOT USE FOR NAVIGATION**

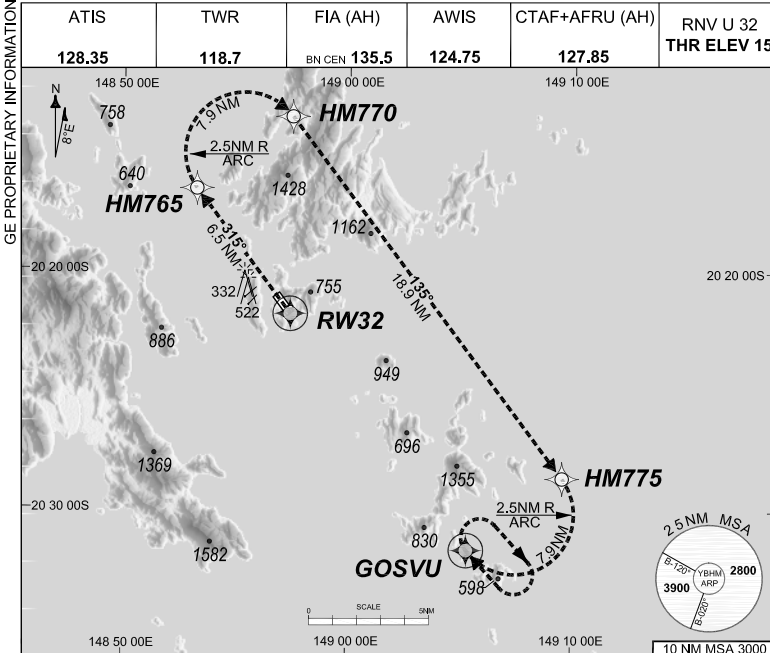
Prepared by GE Aviation



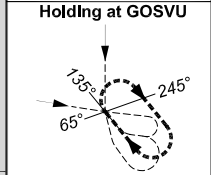
24 MAR 2022

USE QNH

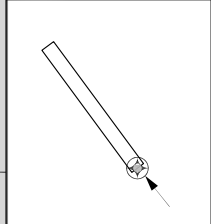
HAMILTON ISLAND, QLD (YBHM)



ATIS	TWR	FIA (AH)	AWIS	CTAF+AFRU (AH)	RNV U 32 THR ELEV 15	RNP AR APCH - RF RQ - YBHM ACT QNH RQ - YBHM ACT TEMP RQ - PROC TEMP RANGE +14°C TO +36°C
128.35	118.7	BN CEN 135.5	124.75	127.85		Holding at GOSVU



TR	INTURN	TIME	MIN	ALT	DME	LMT
315°	Right	1'	4000			



**AD ELEV 15**  
Bearings are Magnetic  
Elevations in FEET AMSL

**ENGINE OUT MISSED APPROACH:**

Track via the RNP AR Engine Out Missed Approach track to GOSVU and hold as published.

Acceleration altitude see Go-Around Safety Assessment.  
Continue to climb in hold as necessary to 4000FT, or as directed by ATC. EO hold only, not contained in CTA. Maximum holding speed **230 KIAS**.

202109231255 COPYRIGHT 2021 NAVERUS, INC. USA

Revision: From SUP H97/21, chart title

BHMG08-170

**DO NOT USE FOR NAVIGATION**

Prepared by GE Aviation



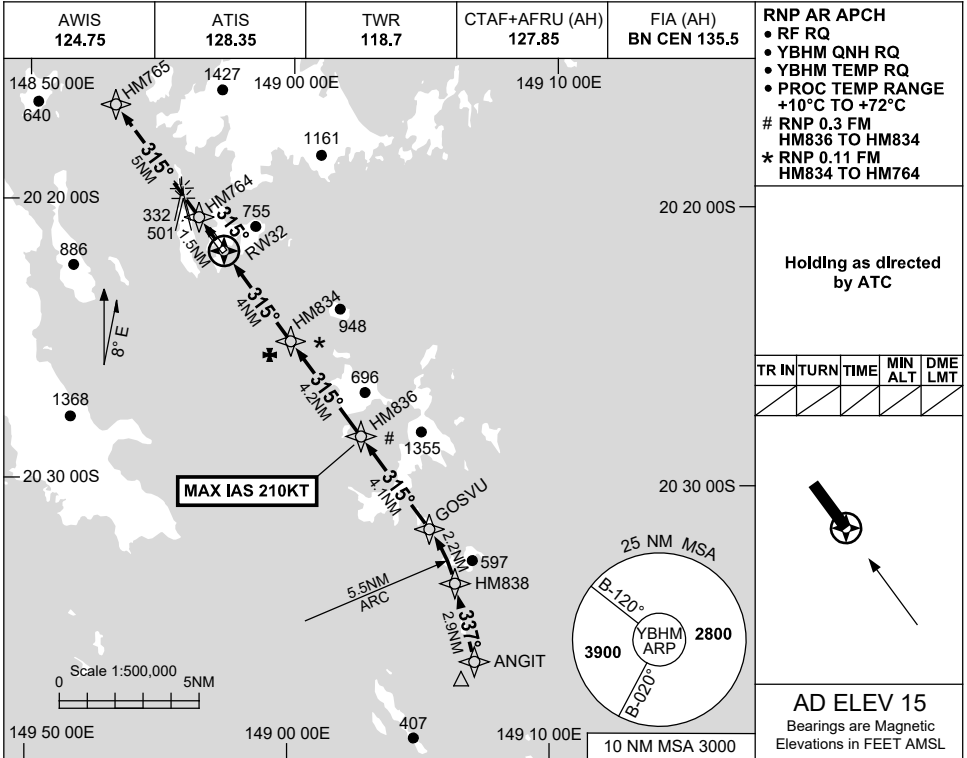
FOR CASA APPROVED OPERATORS ONLY

USE QNH

RNP W RWY 32 (AR)

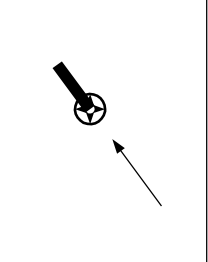
HAMILTON ISLAND, QLD (YBHM)

15 JUN 2023



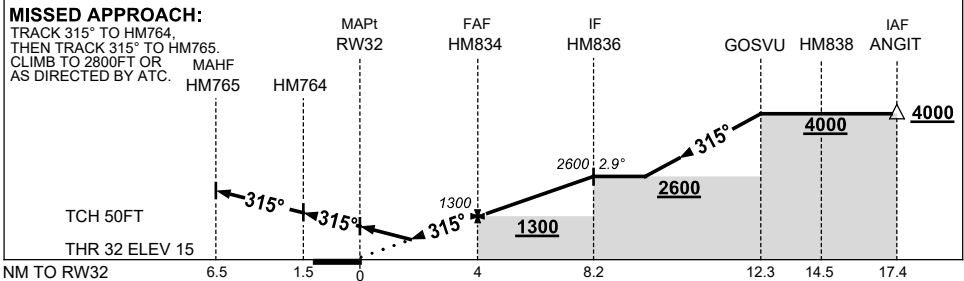
Holding as directed  
by ATC

TR	IN	TURN	TIME	MIN ALT	DME LMT



**AD ELEV 15**  
Bearings are Magnetic  
Elevations in FEET AMSL

NM TO NEXT WPT	RW32	2.2	3	HM834	1	2	3	4	HM836		
ALT (2.9° APCH PATH)	730	990	1300	1610	1920	2220	2530	2600			



**NOTES**

CATEGORY	A	B	C	D
RNP (0.11)	<b>460 (445-2.6)</b>			
CIRCLING	NOT AUTHORISED			
ALTERNATE	(1425-4.4)	(1525-6.0)	(1875-7.0)	

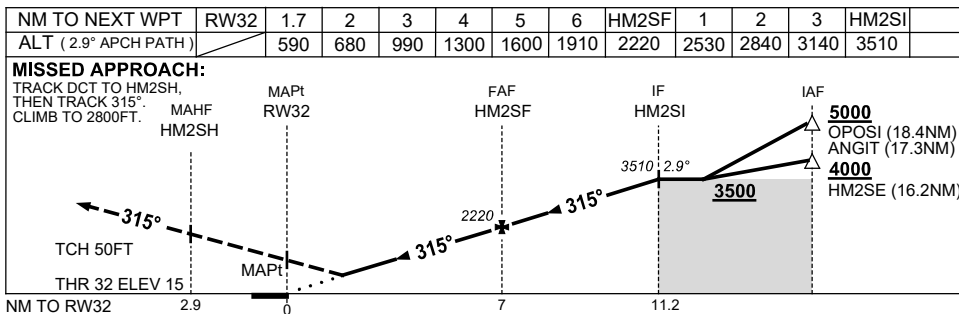
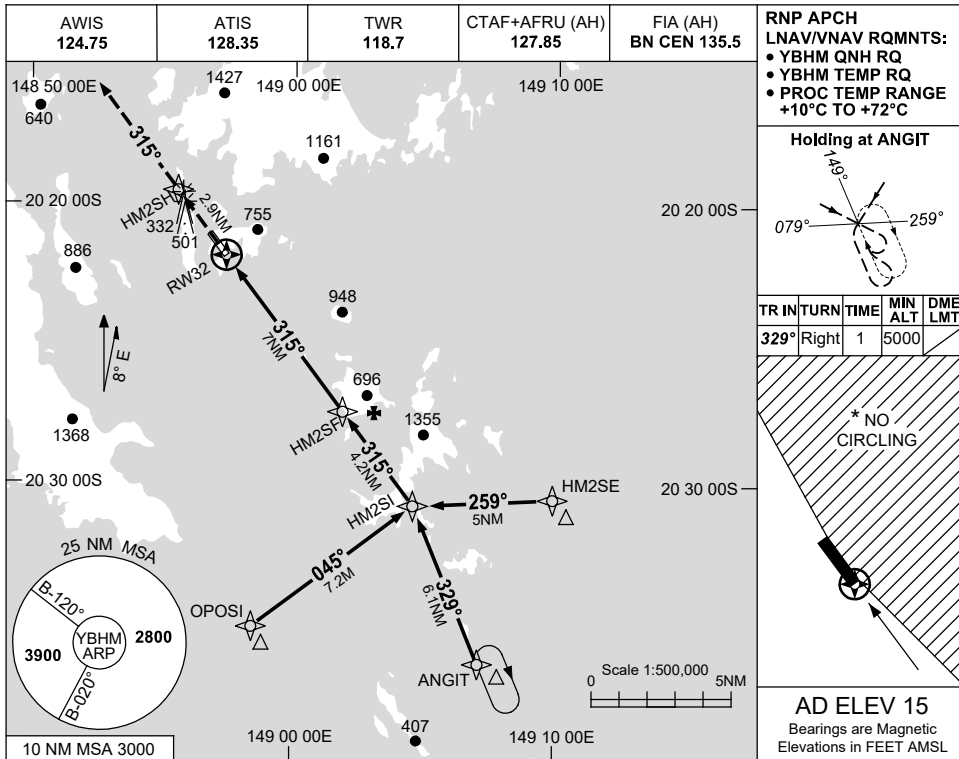
1. MAX IAS:  
HM836 : 210KT.

Changes: FROM SUP H05/23.

BHMGNO9-175

**USE QNH RNP Y RWY 32 (LNAV/VNAV ONLY)  
HAMILTON ISLAND, QLD (YBHM)**

**15 JUN 2023**



CATEGORY	A	B	C	D
LNAV/VNAV(4.1% MAP)	<b>590 (575-3.4)</b>			
LNAV/VNAV(2.5% MAP)	<b>670 (655-3.8)</b>			
CIRCLING *	<b>1040</b> (1025-2.4)	<b>1140</b> (1125-4.0)	<b>1490</b> (1475-5.0)	
ALTERNATE	(1525-4.4)	(1625-6.0)	(1975-7.0)	

- NOTES**
- MAX IAS:  
INITIAL : 210KT.
  - \* 2. NO CIRCLING EAST OF RWY 14/32.

Changes: FROM SUP H05/23.

BHMG10-175

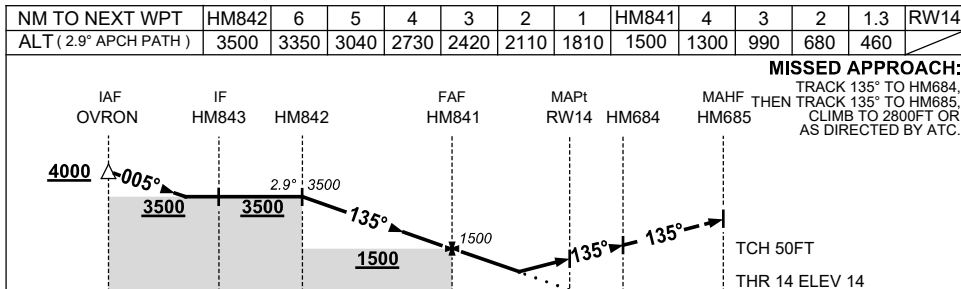
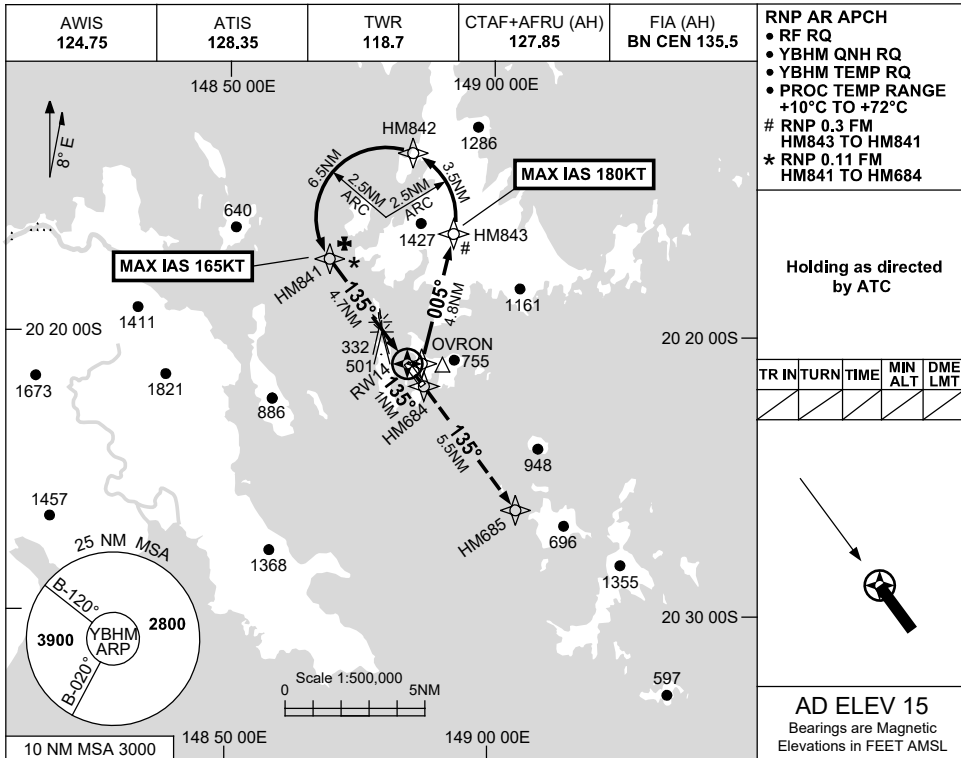
FOR CASA APPROVED OPERATORS ONLY

USE QNH

RNP W RWY 14 (AR)

HAMILTON ISLAND, QLD (YBHM)

15 JUN 2023



**NOTES**

- MAX IAS:  
 HM843 : 180KT.  
 HM841 : 165KT.

CATEGORY	A	B	C	D
RNP (0.11)	<b>460 (446-2.6)</b>			
CIRCLING	NOT AUTHORISED			
ALTERNATE	(1425-4.4)	(1525-6.0)		(1875-7.0)

Changes: FROM SUP H05/23.

BHMG11-175



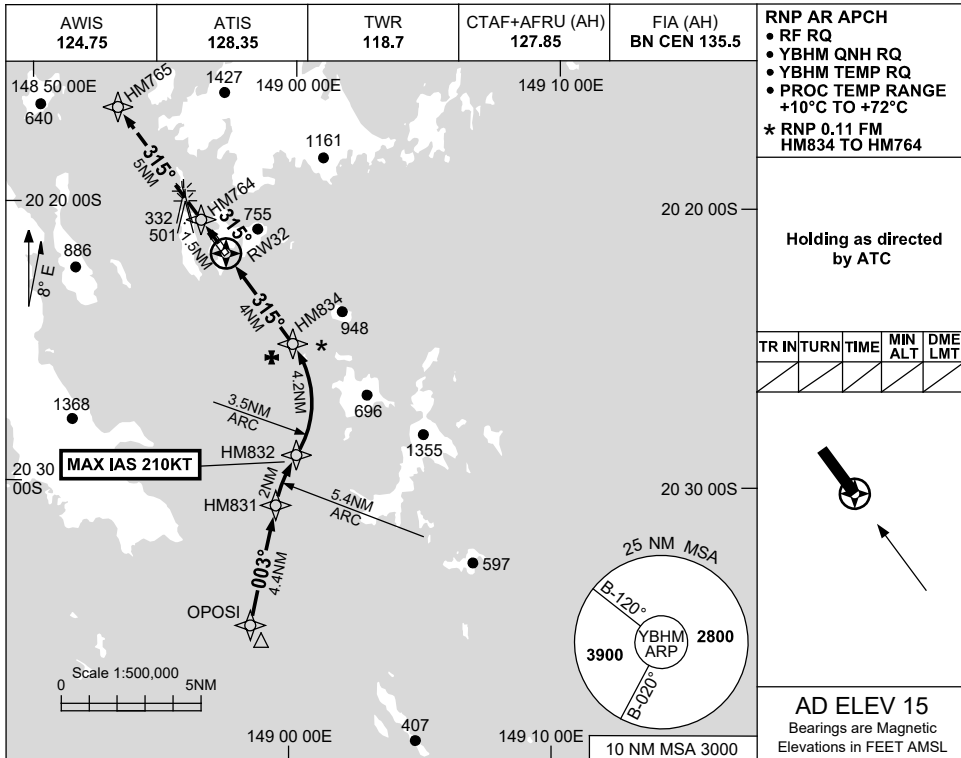
FOR CASA APPROVED OPERATORS ONLY

USE QNH

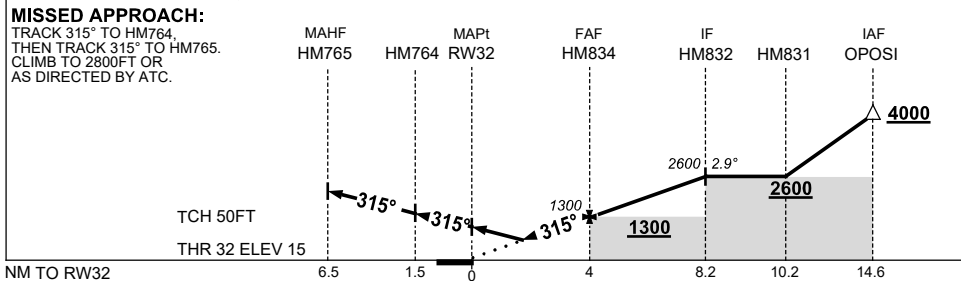
RNP X RWY 32 (AR)

15 JUN 2023

HAMILTON ISLAND, QLD (YBHM)



NM TO NEXT WPT	RW32	1.3	2	3	HM834	1	2	3	4	HM832		
ALT (2.9° APCH PATH)		460	680	990	1300	1610	1920	2220	2530	2600		



**NOTES**

CATEGORY	A	B	C	D
RNP (0.11)	<b>460 (445-2.6)</b>			
CIRCLING	NOT AUTHORISED			
ALTERNATE	(1425-4.4)	(1525-6.0)	(1875-7.0)	

1. MAX IAS:  
HM832 : 210KT.

Changes: FROM SUP H05/23.

BHMG12-175



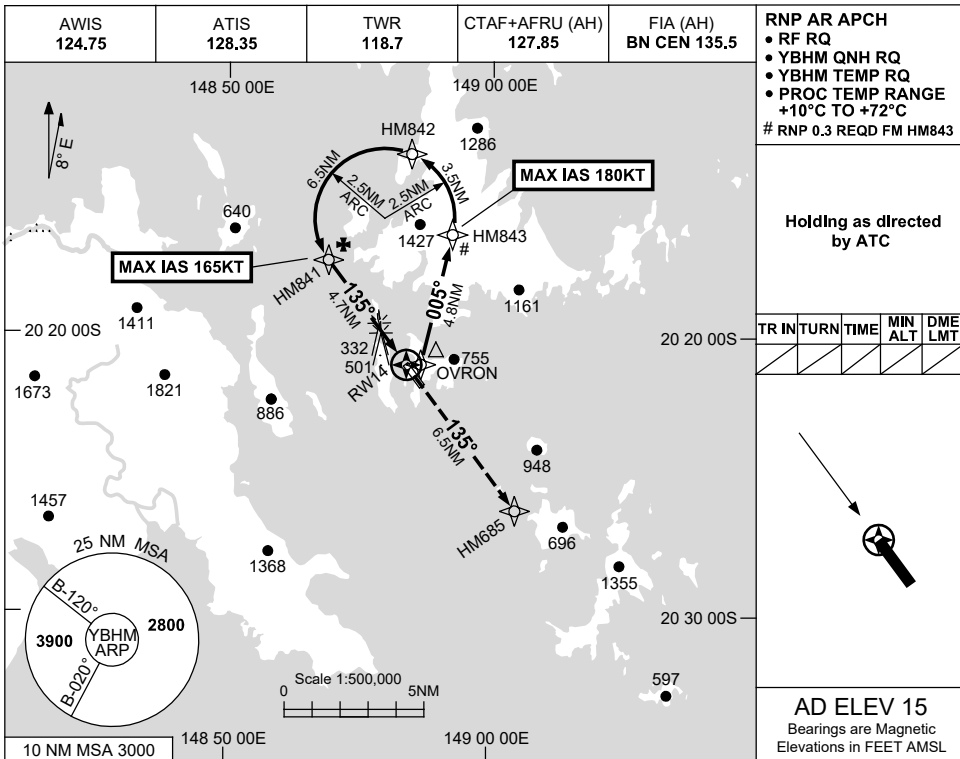
FOR CASA APPROVED OPERATORS ONLY

USE QNH

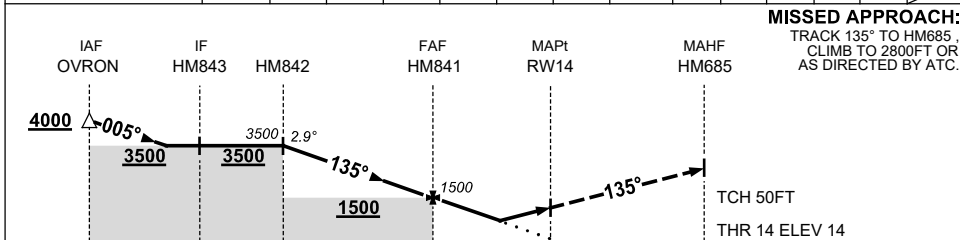
RNP Y RWY 14 (AR)

HAMILTON ISLAND, QLD (YBHM)

1 DEC 2022



NM TO NEXT WPT	HM842	6	5	4	3	2	1	HM841	4	3	2.3	1.8	1.6	RW14
ALT (2.9° APCH PATH)	3500	3350	3040	2730	2420	2110	1810	1500	1300	990	760	610	550	



CATEGORY	A	B	C	D
RNP (0.3)		760 (746-4.4)		
RNP (0.11)(2.5% MAP)		610 (596-3.5)		
RNP (0.11)(4.5% MAP)		550 (536-3.1)		
CIRCLING	NOT AUTHORISED			
ALTERNATE	(1425-4.4)		(1525-6.0)	(1875-7.0)

**NOTES**  
1. MAX IAS:  
HM843 : 180KT.  
HM841 : 165KT.

Changes: FROM SUP H81/22.

BHMG13-173