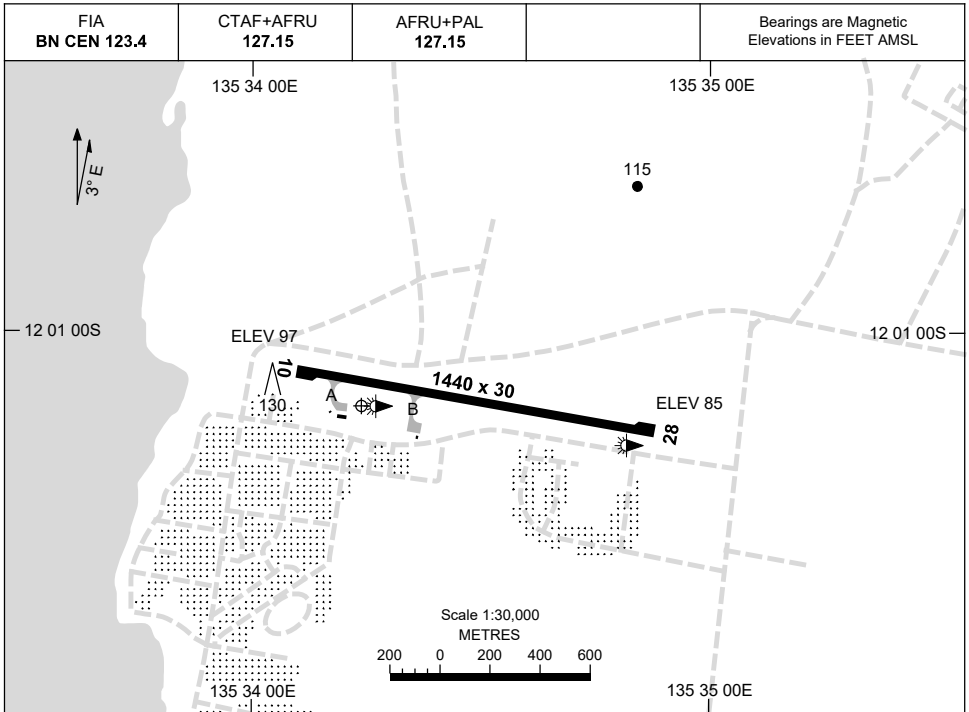


16 JUN 2022

AD ELEV 101
12 01 10S 135 34 14E

AERODROME CHART
ELCHO ISLAND, NT (YELD)



	AERODROME LIGHTING
RWY	RL : AFRU+PAL 127.15
10 <small>097</small>	LIRL
<small>277</small> 28	LIRL

NOTES

1. FIA FREQ 123.4 AVBL IN CIRCUIT AREA.

Changes: MAG VAR, RWY BRG, THR ELEV.

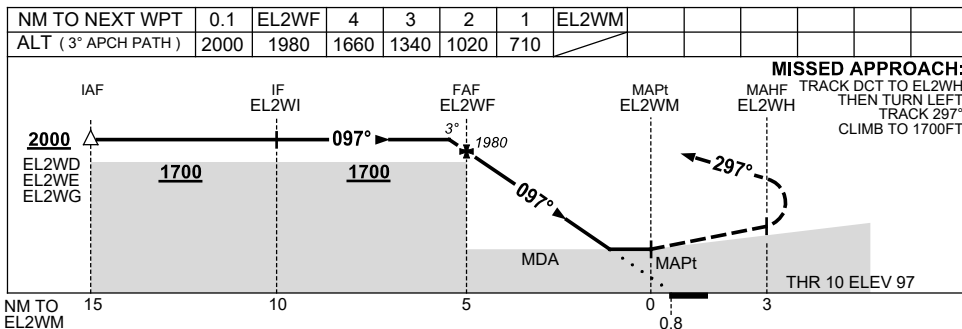
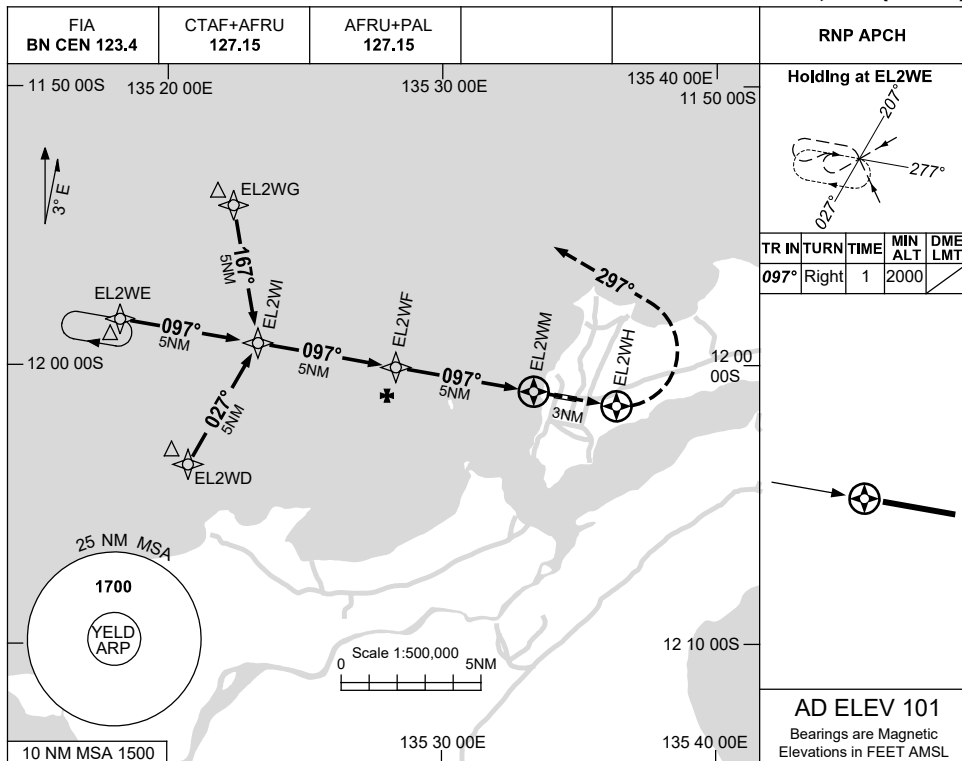
ELDAD01-171

USE QNH

RNP RWY 10

8 SEP 2022

ELCHO ISLAND, NT (YELD)



NOTES

CATEGORY	A	B	C	D
LNAV	710 (609-3.5)			NOT APPLICABLE
CIRCLING	710 (609-2.4)	800 (699-4.0)		
ALTERNATE	(1109-4.4)		(1199-6.0)	

1. MAX IAS:
INITIAL : 210KT.

Changes: CHART TITLE, PBN SPECIFICATION BOX.

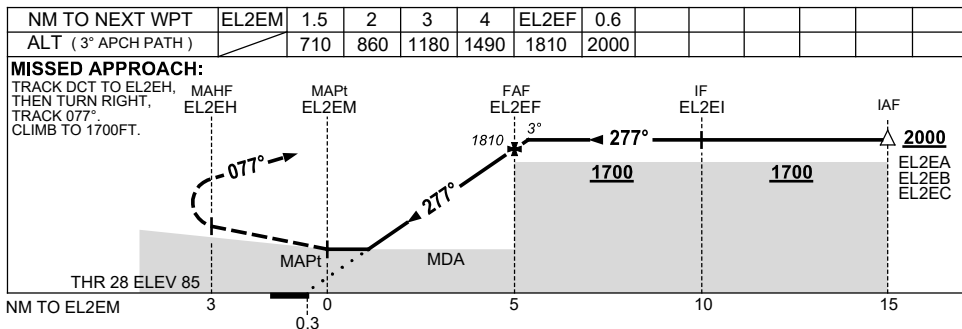
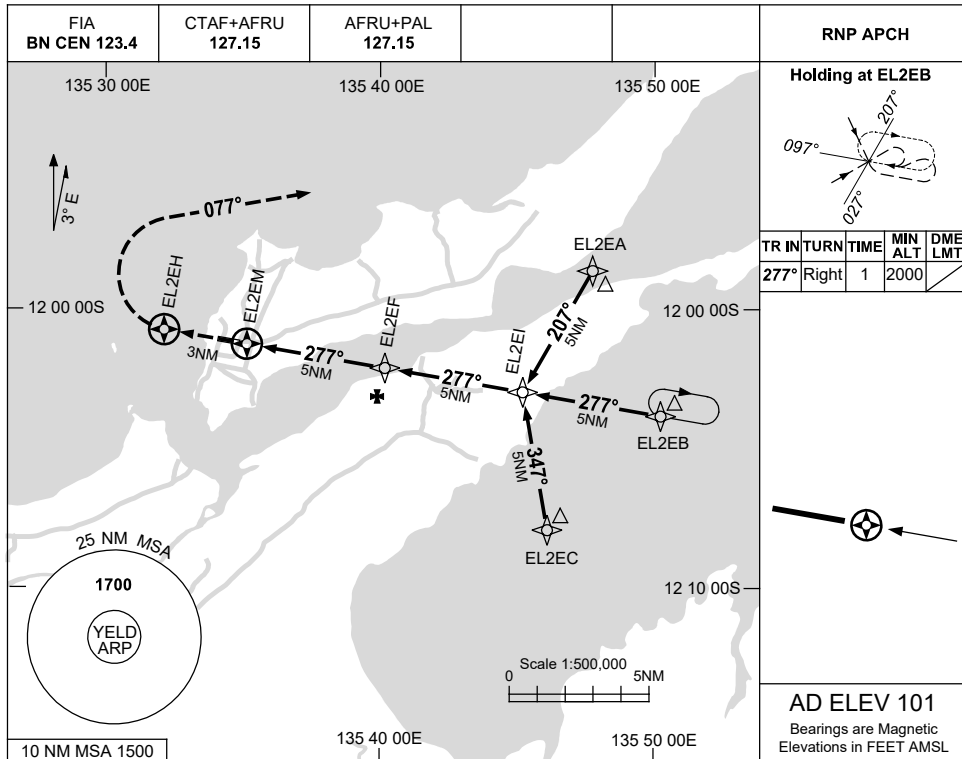
ELDGN01-172

USE QNH

RNP RWY 28

8 SEP 2022

ELCHO ISLAND, NT (YELD)



NOTES

- 1. MAX IAS: INITIAL : 210KT.

CATEGORY	A	B	C	D
LNAV	710 (625-3.6)			NOT APPLICABLE
CIRCLING	710 (609-2.4)	800 (699-4.0)		
ALTERNATE	(1109-4.4)		(1199-6.0)	

Changes: CHART TITLE, PBN SPECIFICATION BOX.

ELDGN02-172

