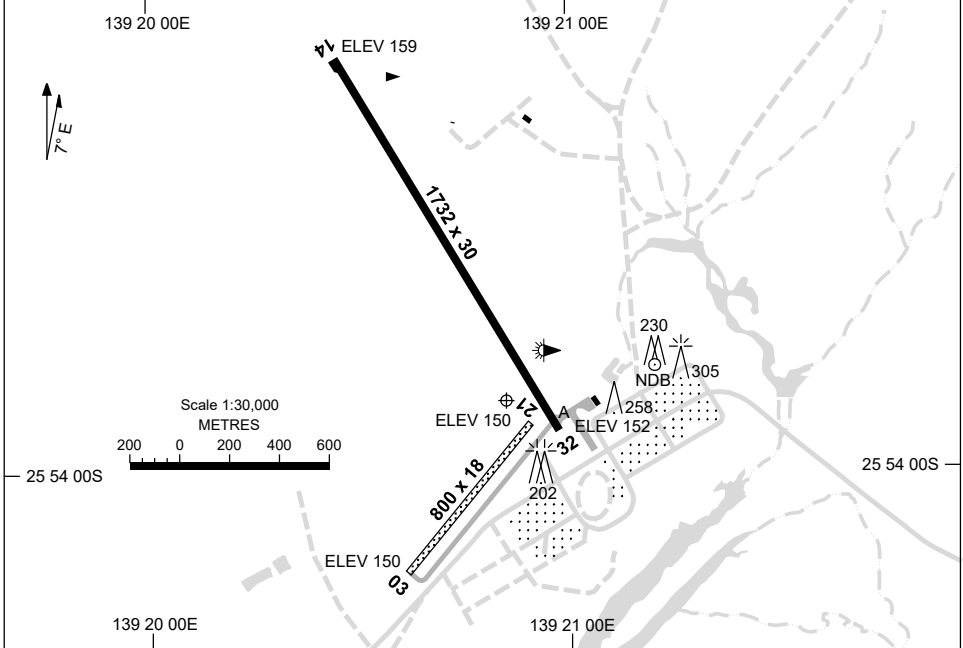


30 NOV 2023

AD ELEV 159
25 53 51S 139 20 51E

**AERODROME CHART
BIRDSVILLE, QLD (YBDV)**

FIA BN CEN 125.4	CTAF+AFRU 126.7	AFRU+PAL 126.7		Bearings are Magnetic Elevations in FEET AMSL
---------------------	--------------------	-------------------	--	--



RWY		AERODROME LIGHTING	
		TAXIWAY : BLUE EDGE	
14	142	LIRL	
	322	32	LIRL
03	033	NIL	
	213	21	NIL

NOTES

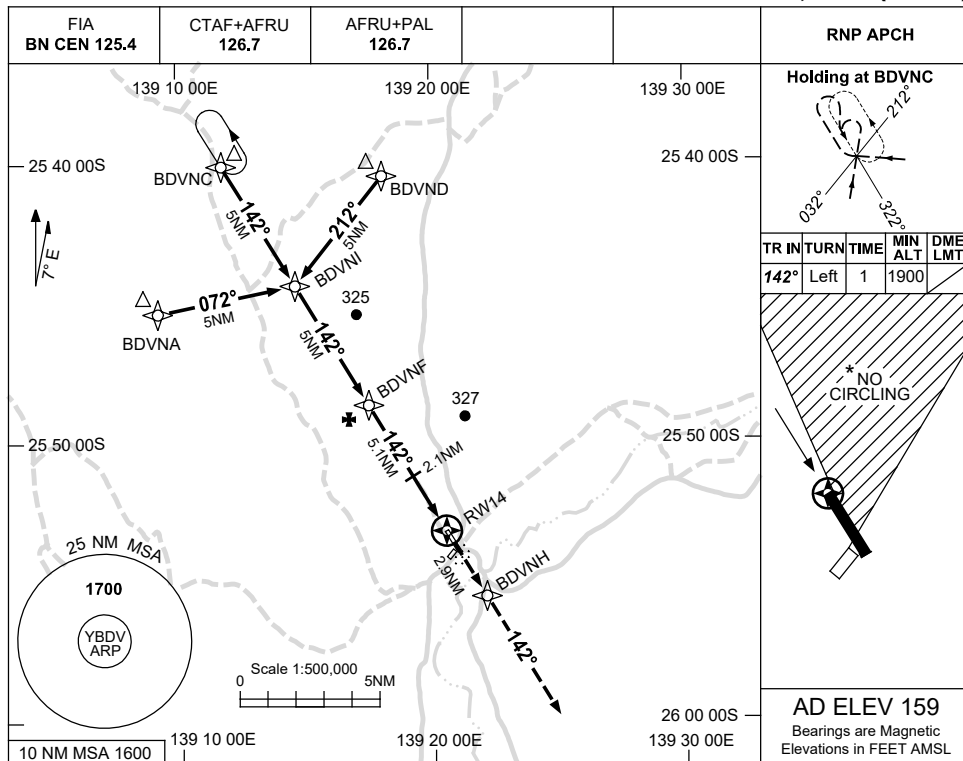
1. AWIS (PHONE) 07 3564 3703

Changes: AD OBSTACLES, Editorial. BDVAD01-177

USE QNH

RNP RWY 14
BIRDSVILLE, QLD (YBDV)

8 SEP 2022



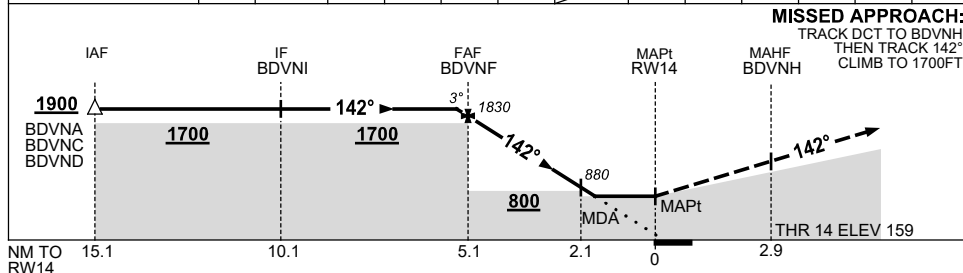
Holding at BDVNC

TR IN	TURN	TIME	MIN ALT	DME LMT
142°	Left	1	1900	

* NO CIRCLING

AD ELEV 159
Bearings are Magnetic
Elevations in FEET AMSL

NM TO NEXT WPT	0.2	BDVNF	4	3	2.1	1.5	RW14
ALT (3° APCH PATH)	1900	1830	1480	1160	880	680	



NOTES

CATEGORY	A	B	C	D
LNAV	680 (521-2.9)			NOT APPLICABLE
CIRCLING *	800 (641-2.4)		960 (801-4.0)	
ALTERNATE	(1141-4.4)		(1301-6.0)	

- MAX IAS: INITIAL : 210KT.
- NO CIRCLING IN SECTOR NORTH OF RWY 14 AND RWY 21.
- AWIS (PHONE) 07 3564 3703

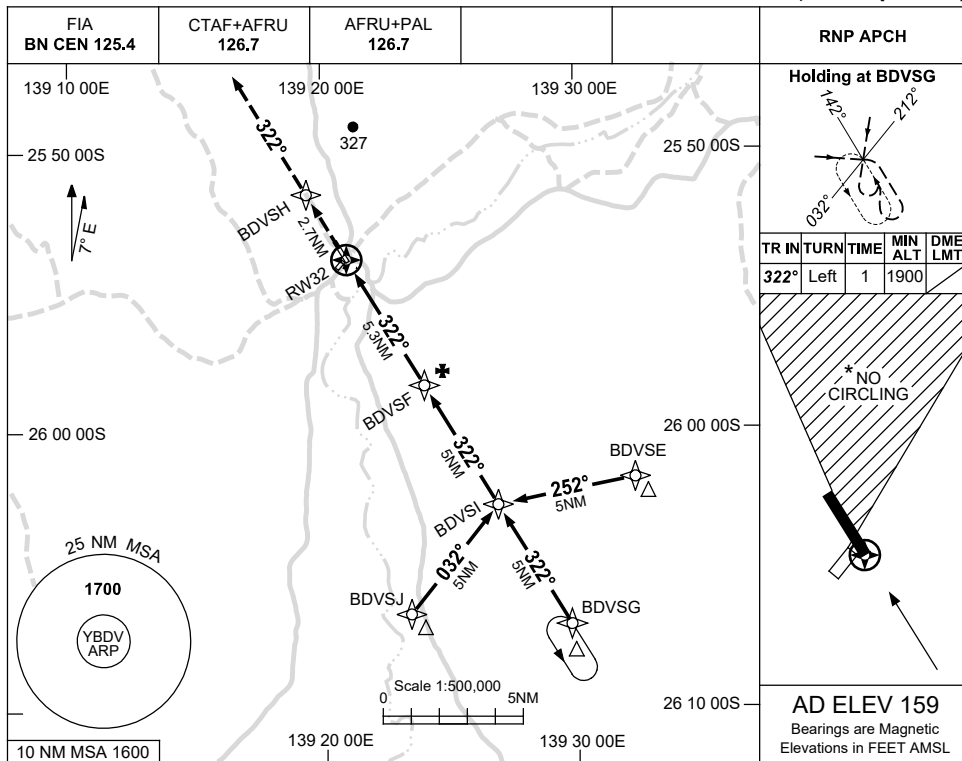
Changes: VIS, Editorial.

BDVGN01-172

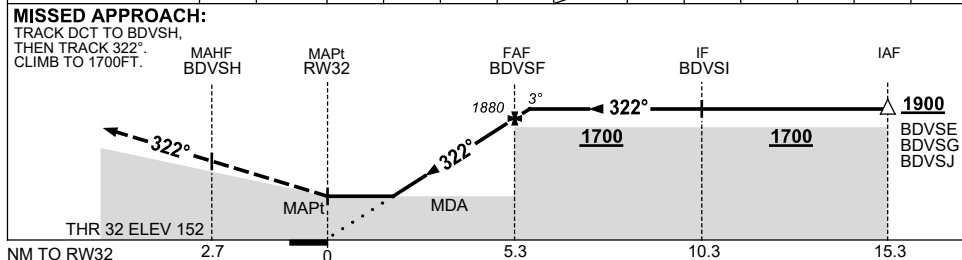
USE QNH

RNP RWY 32
BIRDSVILLE, QLD (YBDV)

8 SEP 2022



NM TO NEXT WPT	0.1	BDVSH	4	3	2	1.5	RW32						
ALT (3° APCH PATH)	1900	1880	1480	1160	840	680							



NOTES

CATEGORY	A	B	C	D
LNAV	680 (521-2.9)			NOT APPLICABLE
CIRCLING *	800 (641-2.4)		960 (801-4.0)	
ALTERNATE	(1141-4.4)		(1301-6.0)	

- MAX IAS: INITIAL : 210KT.
- NO CIRCLING IN SECTOR NORTH OF RWY 14 AND RWY 21.
- AWIS (PHONE) 07 3564 3703

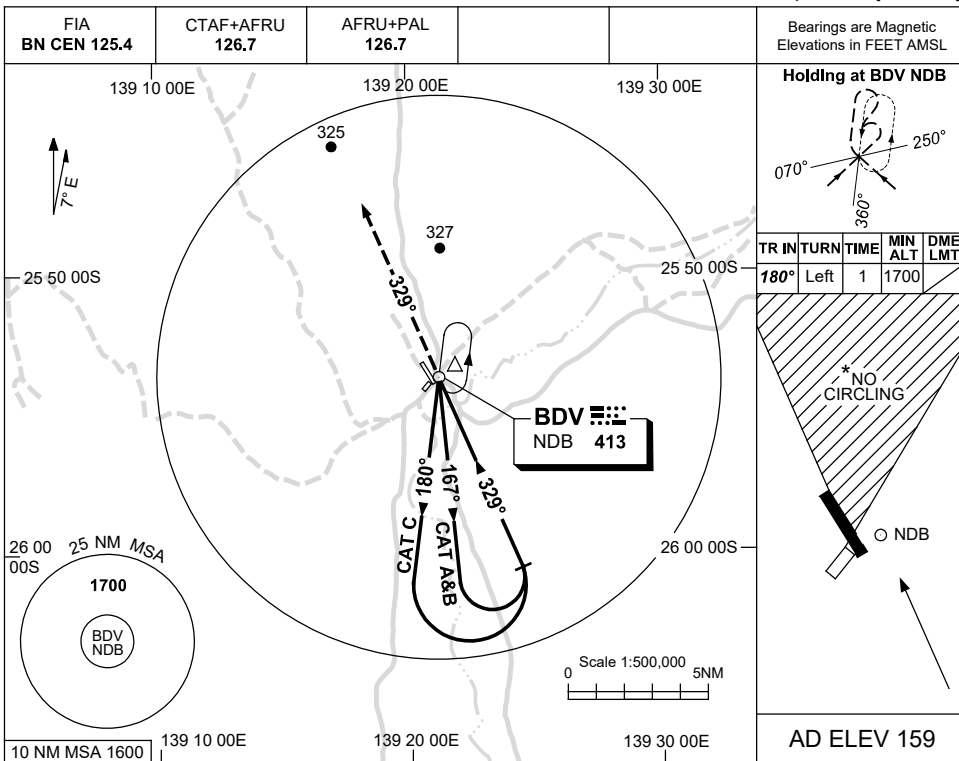
Changes: VIS, Editorial.

BDVGN02-172

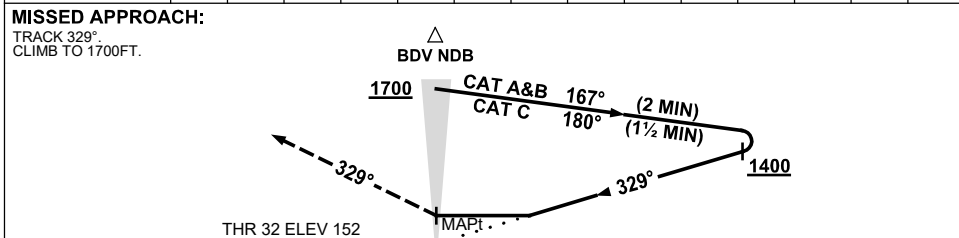
USE QNH

NDB RWY 32
BIRDSVILLE, QLD (YBDV)

8 SEP 2022



DME DIST	NOT APPLICABLE								
ALT									



NOTES

CATEGORY	A	B	C	D
S-I NDB	730 (571-3.2)			NOT APPLICABLE
CIRCLING *	800 (641-2.4)		960 (801-4.0)	
ALTERNATE	(1141-4.4)		(1301-6.0)	

1. MAX IAS:
INITIAL : 210KT.
- * 2. NO CIRCLING IN SECTOR NORTH OF RWY 14 AND RWY 21.
3. AWIS (PHONE)
07 3564 3703

Changes: Editorial.

BDVNB01-172