

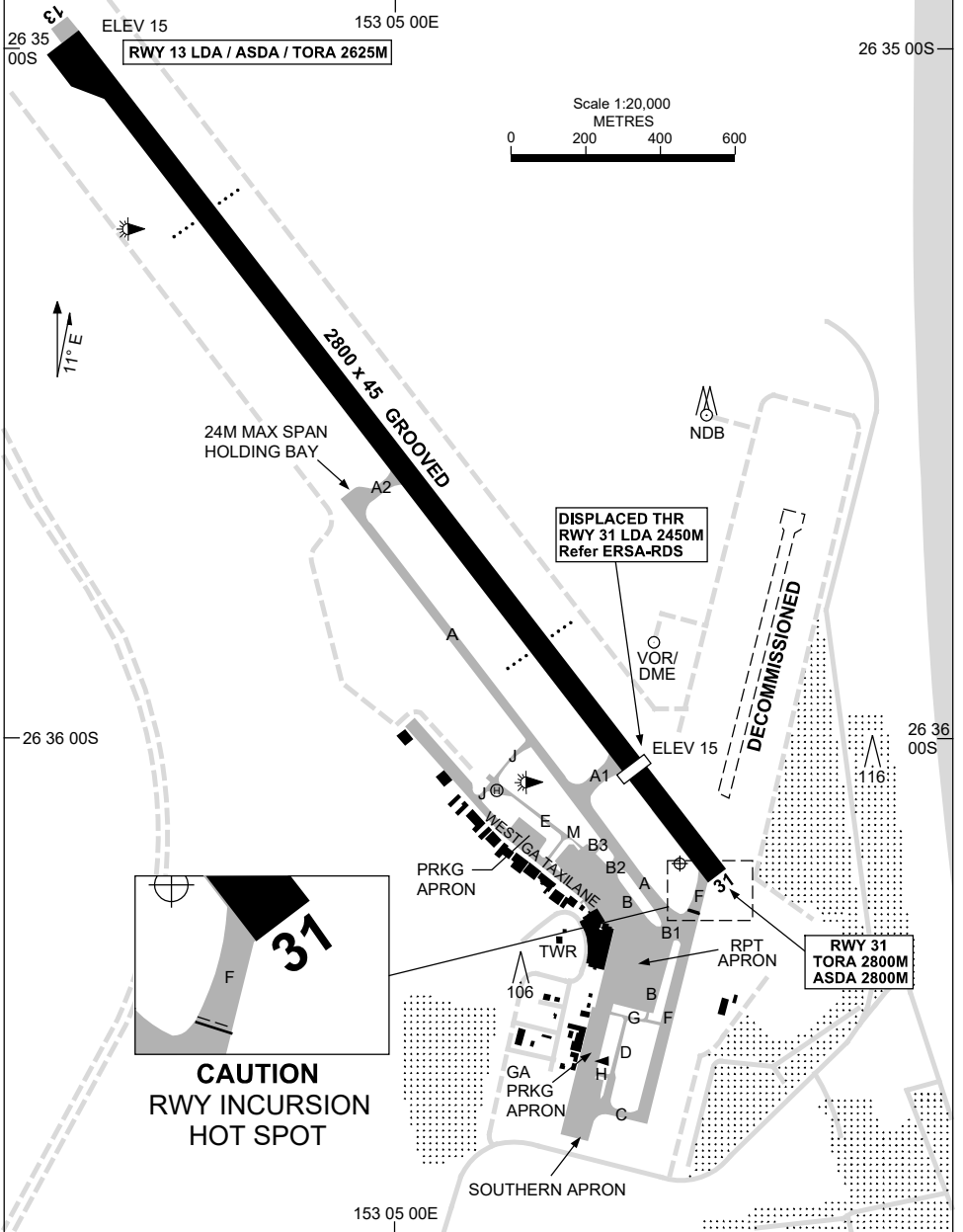
AD ELEV 15

26 36 12S 153 05 28E

SUNSHINE COAST, QLD (YBSU)

5 SEP 2024

ATIS/AWIS (AH) 114.2/119.8	SMC 121.1	TWR 124.4	FIA BN CEN 129.0 (CCT AREA) BN CEN 135.2 (ON GROUND AH)	CTAF+AFRU (AH) 124.4	AFRU+PAL 124.4	Bearings are Magnetic Elevations in FEET AMSL
--------------------------------------	---------------------	---------------------	---	--------------------------------	--------------------------	--



Changes: Editorial.

BSUAD01-180

20 MAR 2025

AD ELEV 15
26 36 12S 153 05 28E

AERODROME CHART - Page 2
SUNSHINE COAST, QLD (YBSU)

ATIS/AWIS (AH) 114.2/119.8	SMC 121.1	TWR 124.4	FIA BN CEN 129.0 (CCT AREA) BN CEN 135.2 (ON GROUND AH)	CTAF+AFRU (AH) 124.4	AFRU+PAL 124.4	Bearings are Magnetic Elevations in FEET AMSL
--------------------------------------	---------------------	---------------------	---	--------------------------------	--------------------------	--

--	--	--	--	--	--	--

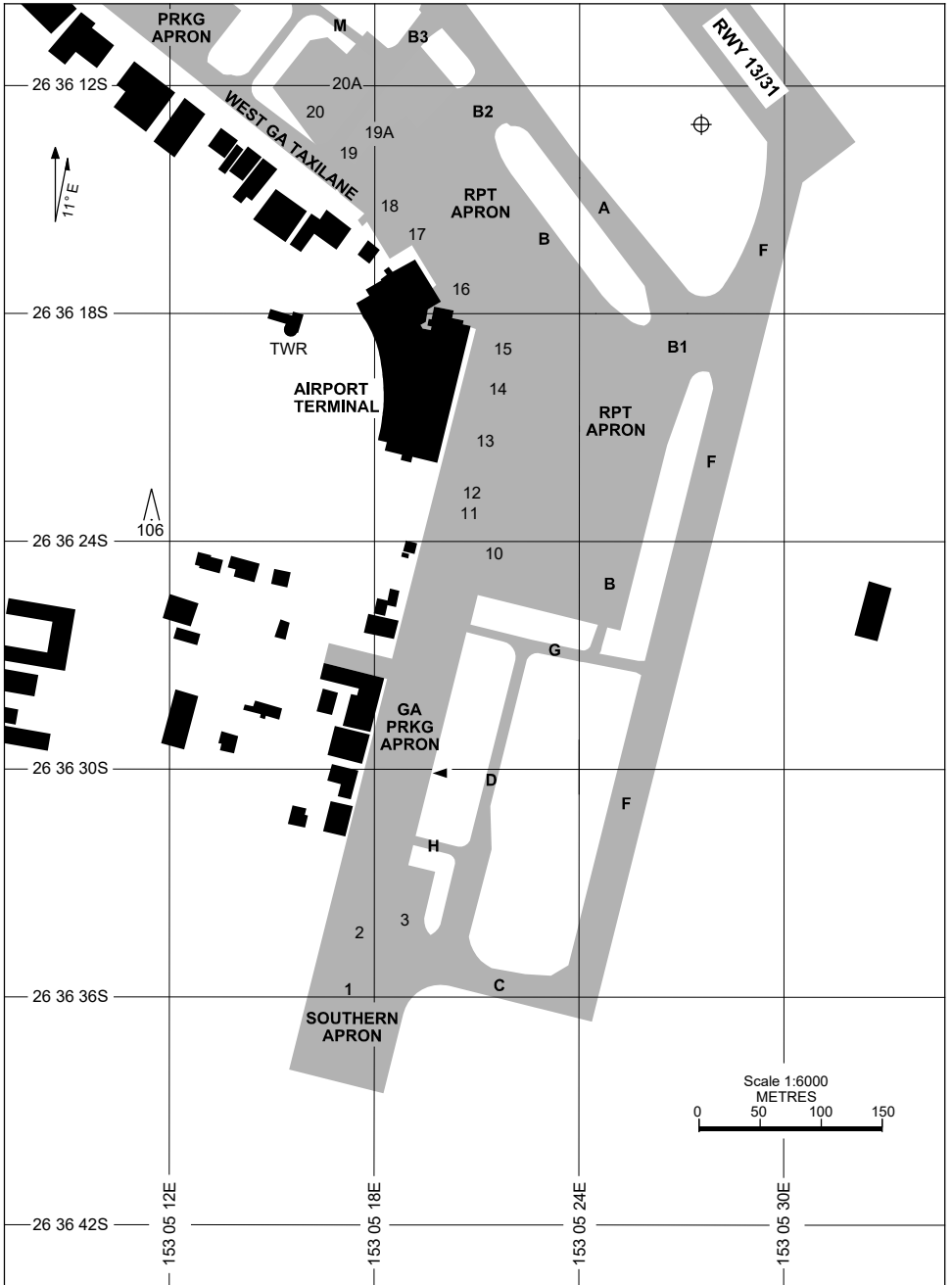
RWY	AERODROME LIGHTING					
	<p>TAXIWAY : GREEN CL ON TWY A, TWY A1, TWY A2, TWY B, TWY B1, TWY B2, TWY J, TWY M, TWY F BTN TWY B1 AND RWY 13/31, WESTERN GA TAXI LANE.</p> <p>RL : AFRU+PAL 124.4 , SDBY (15 SEC)</p>					
13 ¹³²	PAPI 3.0° 67FT RTIL MIRL					
³¹² 31	PAPI 3.0° 67FT RTIL MIRL					

NOTES						
--------------	--	--	--	--	--	--

Changes: TWY LIGHTING, Editorial.

BSUAD02-182

5 SEP 2024



Changes: Editorial.

BSUAP01-180

21 MAR 2024

PARKING POSITION INFORMATION

STAND	CO-ORDINATES	ELEV (ft)	CAPACITY	HYDRANT FUEL	DOCKING SYSTEM
1	26 36 36.12S 153 05 17.36E	9	A320/B738	NIL	NIL
2	26 36 34.23S 153 05 17.89E	9	A320/B738	NIL	NIL
3	26 36 33.81S 153 05 19.06E	9	E135	NIL	NIL
10	26 36 24.33S 153 05 21.49E	13	A321/B739	F35	A-VDGS
11	26 36 23.28S 153 05 20.77E	14	A35K/B773	F35	A-VDGS
12	26 36 22.72S 153 05 20.84E	14	A321/B739	F35	A-VDGS
13	26 36 21.35S 153 05 21.22E	14	A321/B739	F35	A-VDGS
14	26 36 19.98S 153 05 21.60E	14	A321/B739	F35	A-VDGS
15	26 36 18.94S 153 05 21.73E	14	A321/B738	NIL	A-VDGS
16	26 36 17.37S 153 05 20.51E	14	A321/B738	NIL	A-VDGS
17	26 36 16.19S 153 05 19.49E	13	A321/B738	NIL	A-VDGS
18	26 36 15.15S 153 05 18.41E	12	A321/B738	NIL	A-VDGS
19	26 36 13.79S 153 05 17.24E	12	A321/B738	NIL	NIL
19A	26 36 13.27S 153 05 17.65E	12	GLEX/GLF6	NIL	NIL
20	26 36 12.68S 153 05 16.29E	12	A321/B738	NIL	NIL
20A	26 36 12.26S 153 05 16.76E	12	GLEX/GLF6	NIL	NIL

Changes: FROM SUP H90/23.

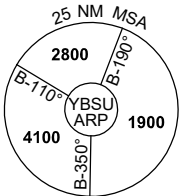
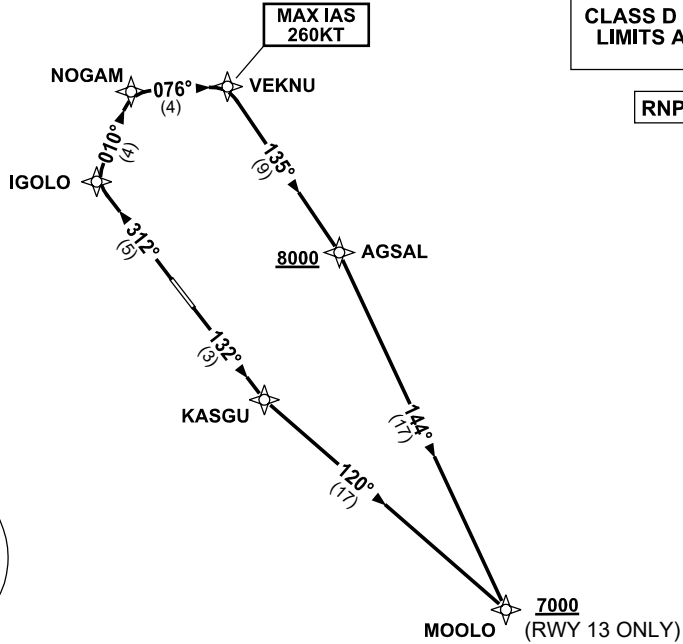
BSUAP02-178

**STANDARD INSTRUMENT DEPARTURES (SID)
MOOLO TWO DEPARTURE (RNAV)
SUNSHINE COAST, QLD (YBSU)**

28 NOV 2024

ATIS/AWIS (AH) 114.2/119.8	SMC 121.1	TWR 124.4	FIA BN CEN 129.0 (CCT AREA) BN CEN 135.2 (ON GROUND AH)	CTAF+AFRU (AH) 124.4	AFRU+PAL 124.4	Bearings are Magnetic Elevations in FEET AMSL
--------------------------------------	---------------------	---------------------	---	--------------------------------	--------------------------	--

NOT TO SCALE



10 NM MSA 2700

MOOLO TWO DEPARTURE

RWY 13

- GRAD 3.3% (4.7% TO 2500ft)
- Track 132° to KASGU
- Turn LEFT, track 120° to MOOLO
Cross MOOLO AT or ABV 7000ft
(RQ GRAD TO MOOLO: 5.8%)

RWY 31

- GRAD 5% to 300ft, then 3.3%
- Track 312° to IGOLO
- Turn RIGHT, track 010° to NOGAM
- Turn RIGHT, track 076° to VEKNU
MAX IAS 260KT to VEKNU
- Turn RIGHT, track 135° to AGSAL
Cross AGSAL AT or ABV 8000ft
(RQ GRAD TO AGSAL: 6%)
- Turn RIGHT, track 144° to MOOLO

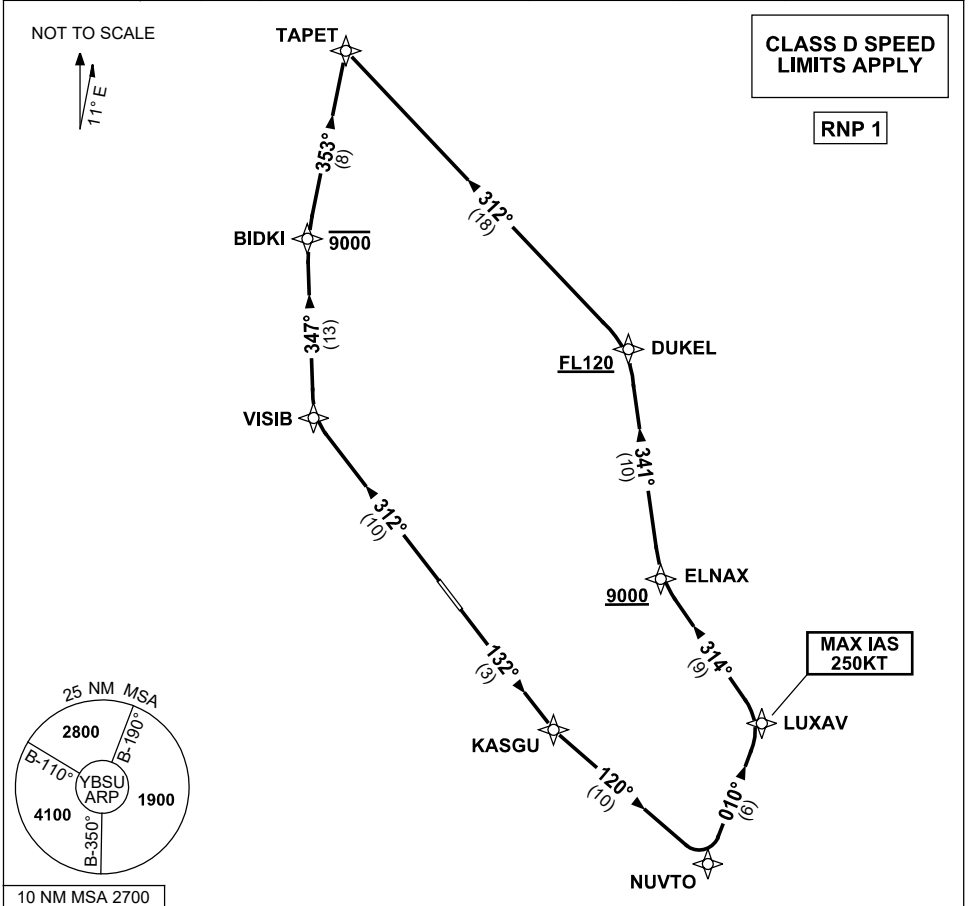
Changes: ALT RESTRICTION AT MOOLO.

BSUDP01-181

**STANDARD INSTRUMENT DEPARTURES (SID)
TAPET ONE DEPARTURE (RNAV)
SUNSHINE COAST, QLD (YBSU)**

24 MAR 2022

ATIS/AWIS (AH) 114.2/119.8	SMC 121.1	TWR 124.4	FIA BN CEN 129.0 (CCT AREA) BN CEN 135.2 (ON GROUND AH)	CTAF+AFRU (AH) 124.4	AFRU+PAL 124.4	Bearings are Magnetic Elevations in FEET AMSL
-------------------------------	--------------	--------------	---	-------------------------	-------------------	--



10 NM MSA 2700

TAPET ONE DEPARTURE

RWY 13

- GRAD 3.3% (4.7% TO 2500ft)
- Track 132° to KASGU
- Turn LEFT, track 120° to NUVTO
- Turn LEFT, track 010° to LUXAV
MAX IAS 250KT to LUXAV
- Turn LEFT, track 314° to ELNAX
Cross ELNAX AT or ABV 9000ft
(RQ GRAD TO ELNAX: 5.9%)
- Turn RIGHT, track 341° to DUKEL
Cross DUKEL AT or ABV FL120
- Turn LEFT, track 312° to TAPET

RWY 31

- GRAD 5% TO 300ft, thence 3.3% (5% TO 7000ft)
- Track 312° to VISIB
- Turn RIGHT, track 347° to BIDKI
Cross BIDKI AT or BLW 9000ft
- Turn RIGHT, track 353° to TAPET

Changes: Editorial.

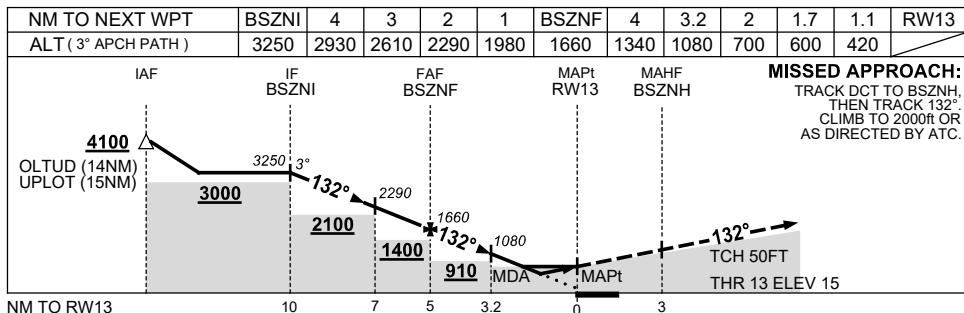
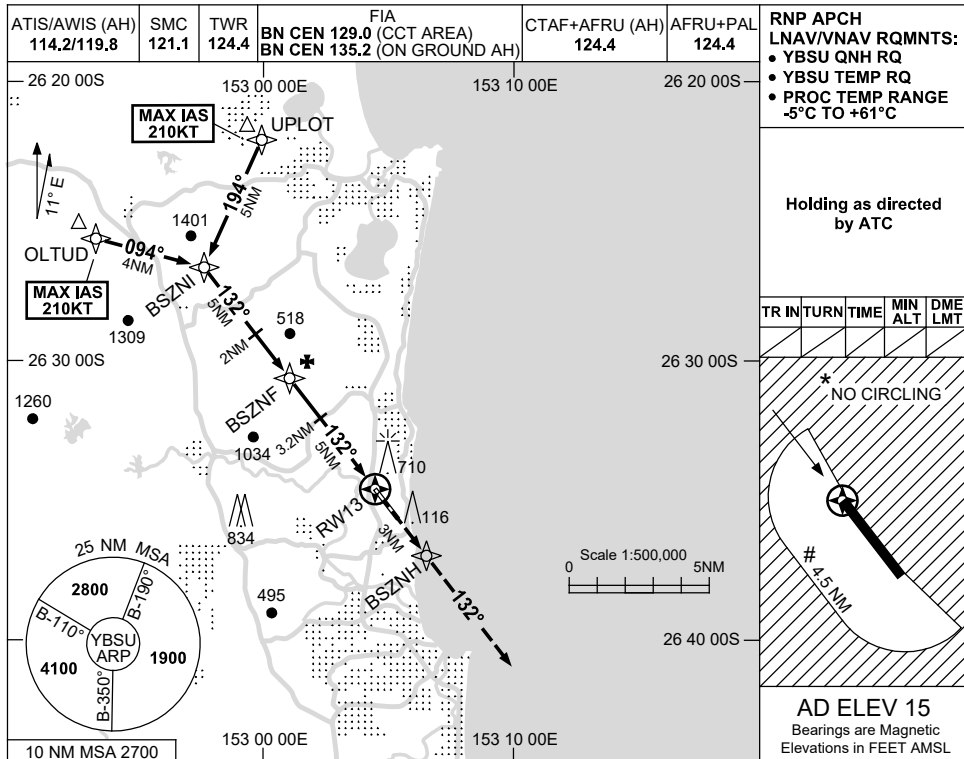
BSUDP02-170

USE QNH

RNP Z RWY 13

21 MAR 2024

SUNSHINE COAST, QLD (YBSU)



CATEGORY	A	B	C	D
LNAV/VNAV		420 (405-2.3)		
LNAV		600 (585-3.3)		
CIRCLING*	680 (665-2.4)		1160 (1145-4.0)	1260 (1245-5.0)
ALTERNATE	(1165-4.4)		(1645-6.0)	(1745-7.0)

- NOTES**
- MAX IAS: INITIAL : 210KT, # CIRCLING: 190KT.
 - * NO CIRCLING E OF RWY 13/31 AND W BEYOND 4.5NM.

Changes: PJE SYMBOLS REMOVED, Editorial.

BSUGN05-178

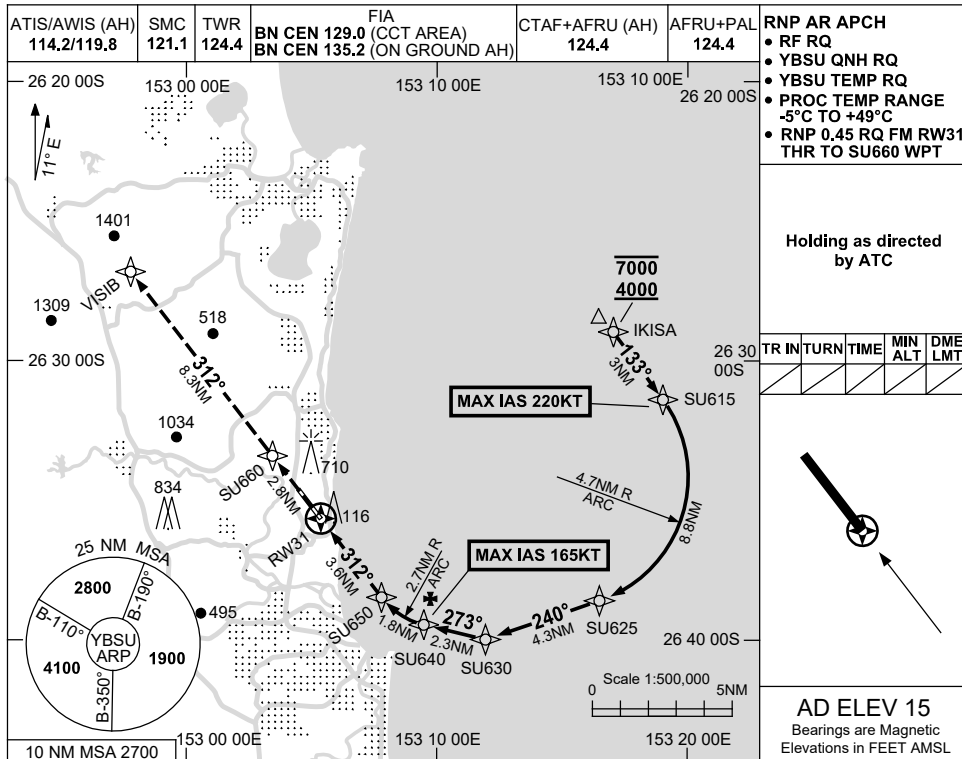
FOR CASA APPROVED OPERATORS ONLY

USE QNH

RNP X RWY 31 (AR)

SUNSHINE COAST, QLD (YBSU)

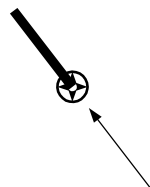
21 MAR 2024



- RNP AR APCH**
- RF RQ
 - YBSU QNH RQ
 - YBSU TEMP RQ
 - PROC TEMP RANGE -5°C TO +49°C
 - RNP 0.45 RQ FM RWY31 THR TO SU660 WPT

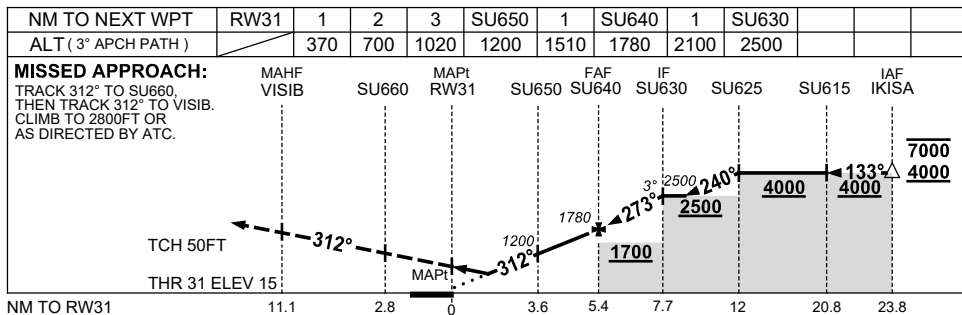
Holding as directed by ATC

TR	IN	TURN	TIME	MIN ALT	DME LMT



AD ELEV 15

Bearings are Magnetic
Elevations in FEET AMSL



NOTES

- MAX IAS:
SU615 : 220KT.
SU640 : 165KT.

CATEGORY	A	B	C	D
RNP (0.3)	370 (355-2.0)			
CIRCLING	NOT AUTHORISED			
ALTERNATE	(1065-4.4)	(1545-6.0)	(1645-7.0)	

Changes: PJE SYMBOLS REMOVED, Editorial.

BSUGN06-178

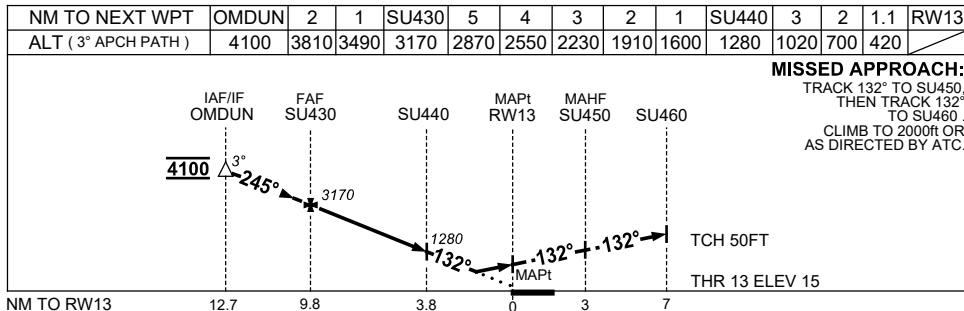
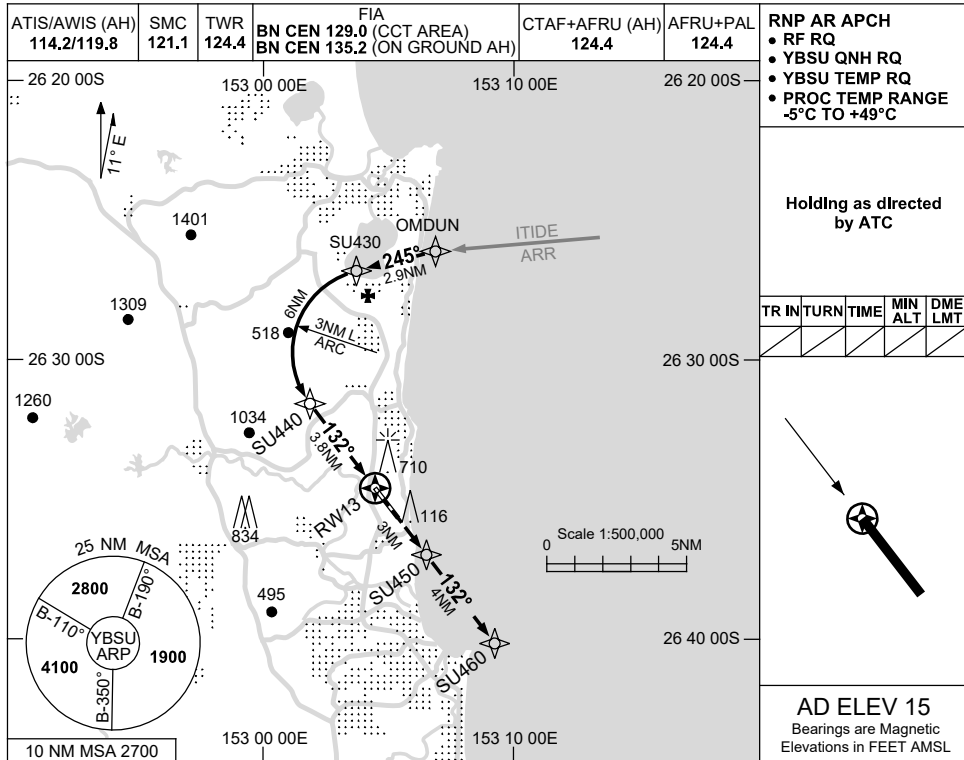
FOR CASA APPROVED OPERATORS ONLY

USE QNH

RNP W RWY 13 (AR)

SUNSHINE COAST, QLD (YBSU)

21 MAR 2024



NOTES

CATEGORY	A	B	C	D
RNP (0.3)	420 (405-2.3)			
CIRCLING	NOT AUTHORISED			
ALTERNATE	(1065-4.4)	(1545-6.0)	(1645-7.0)	

Changes: PJE SYMBOLS REMOVED, Editorial.

BSUGN07-178

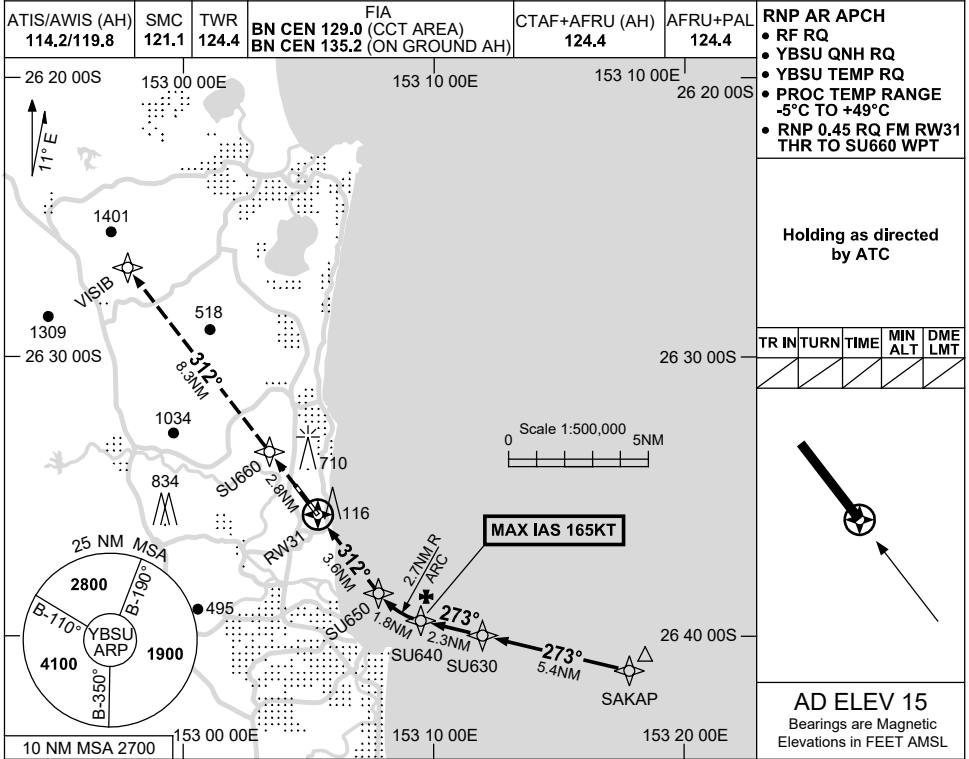
FOR CASA APPROVED OPERATORS ONLY

USE QNH

RNP W RWY 31 (AR)

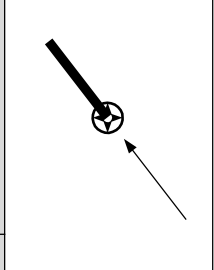
SUNSHINE COAST, QLD (YBSU)

21 MAR 2024

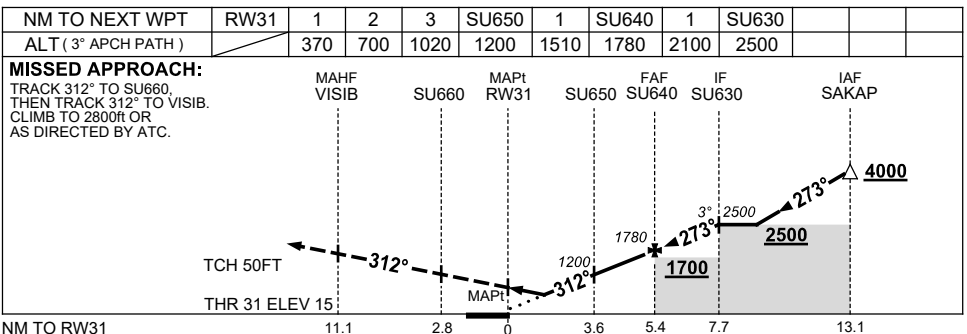


Holding as directed by ATC

TR	IN	TURN	TIME	MIN ALT	DME LMT



AD ELEV 15
Bearings are Magnetic
Elevations in FEET AMSL



NOTES

- MAX IAS:
SU640 : 165KT.

CATEGORY	A	B	C	D
RNP (0.3)	370 (355-2.0)			
CIRCLING	NOT AUTHORISED			
ALTERNATE	(1065-4.4)	(1545-6.0)	(1645-7.0)	

Changes: PJE SYMBOLS REMOVED, Editorial.

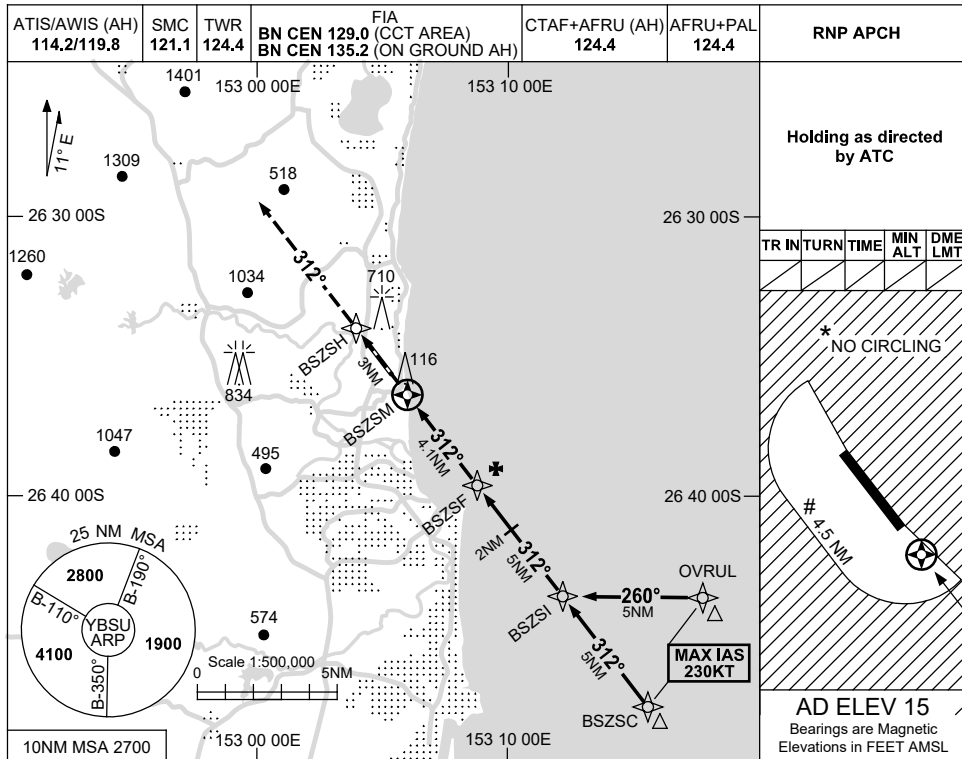
BSUGN08-178

USE QNH

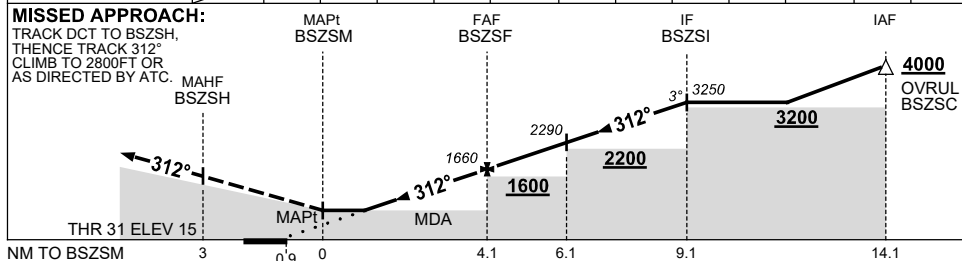
RNP Z RWY 31

21 MAR 2024

SUNSHINE COAST, QLD (YBSU)



NM TO NEXT WPT	BSZSM	0.6	0.9	2	3	BSZSF	1	2	3	4	BSZSI		
ALT (3° APCH PATH)		550	640	990	1310	1660	1980	2290	2610	2930	3250		



NOTES

CATEGORY	A	B	C	D
LNAV (3.5% MAP)		550 (535-3.0)		
LNAV (2.5% MAP)		640 (625-3.6)		
CIRCLING *	680 (665-2.4)		1160 (1145-4.0)	1260 (1245-5.0)
ALTERNATE	(1165-4.4)		(1645-6.0)	(1745-7.0)

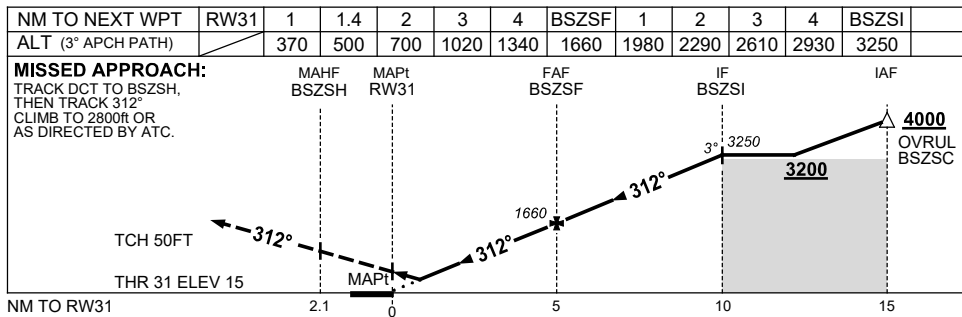
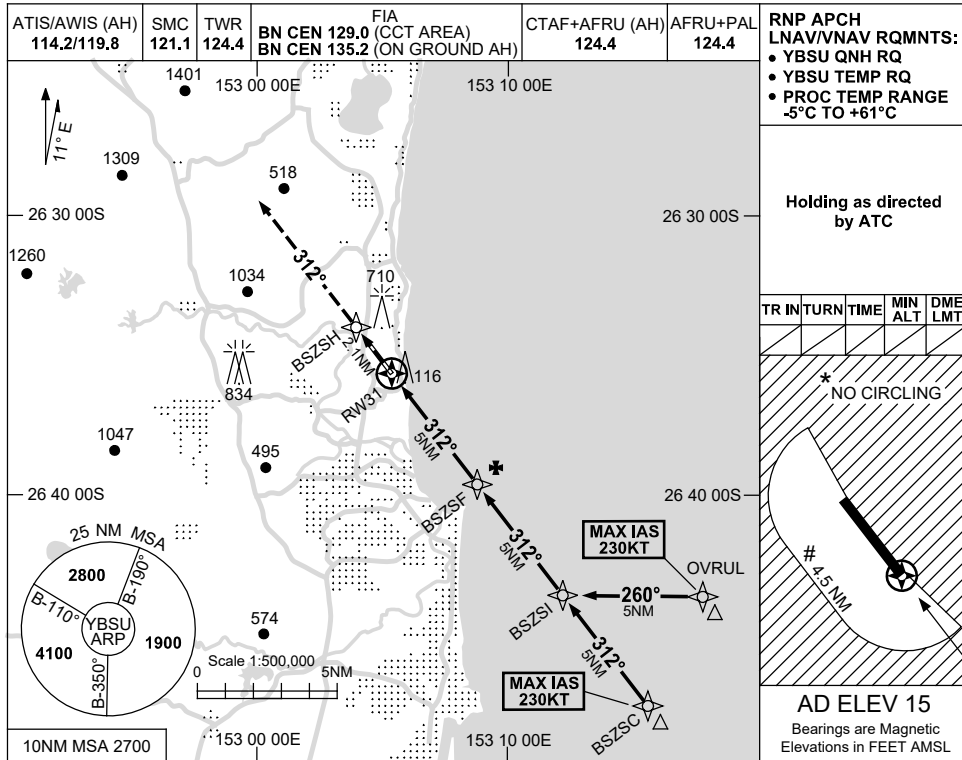
- MAX IAS: INITIAL : 230KT. # CIRCLING: 190KT.
- * NO CIRCLING E OF RWY 13/31 AND W BEYOND 4.5NM.

Changes: PJE SYMBOLS REMOVED, Editorial.

BSUGN09-178

**USE QNH RNP Y RWY 31 (LNAV/VNAV ONLY)
SUNSHINE COAST, QLD (YBSU)**

21 MAR 2024



NOTES

CATEGORY	A	B	C	D
LNAV/VNAV (4.2% MAP)	370 (355-2.0)			
LNAV/VNAV (2.5% MAP)	500 (485-2.7)			
CIRCLING *	680 (665-2.4)	1160 (1145-4.0)	1260 (1245-5.0)	
ALTERNATE	(1165-4.4)		(1645-6.0)	(1745-7.0)

* 1. MAX IAS: INITIAL : 230KT. # CIRCLING: 190KT.
* 2. NO CIRCLING E OF RWY 13/31 AND W BEYOND 4.5NM.

Changes: PJE SYMBOLS REMOVED, Editorial.

BSUGN10-178

NOISE ABATEMENT PROCEDURES

SUNSHINE COAST

1. PREFERRED RUNWAYS

1.1 FOR JET AIRCRAFT:

Landing - Runway 31

Take-off - Runway 13

2. PREFERRED FLIGHT PATHS FOR ACFT ABOVE 5700KG

2.1 Where possible all arriving and departing aircraft to track via SIDs and STARs.

3. TRAINING FLIGHTS

See AIP/ERSA

4. OTHER RESTRICTIONS.

4.1 Aircraft above 5700KG operating between 2300 and 0530 HR local time, require prior approval from SUNSHINE COAST AIRPORT PTY LTD.

4.2 Jet aircraft must not conduct an intersection departure from TWY A2.

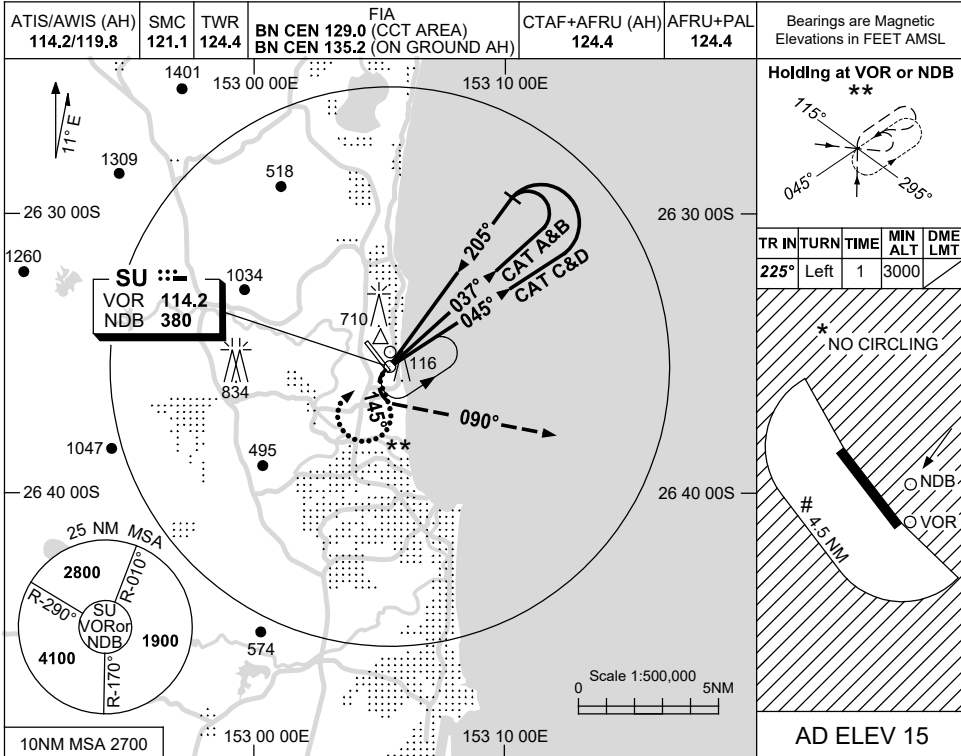
4.3 All departing Jet Aircraft to comply with 7 percent climb gradient to 6000FT, except if SID cancelled by ATC at pilot request due weather.

USE QNH

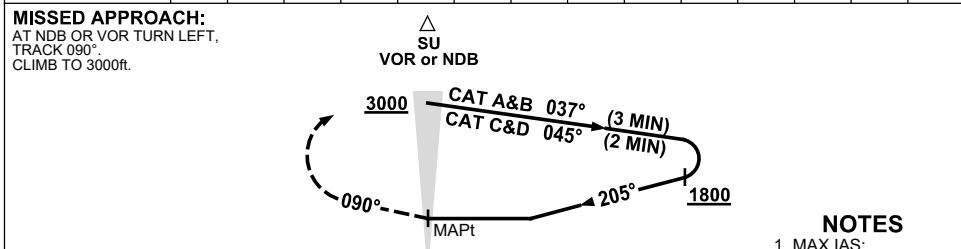
NDB-B or VOR-B

SUNSHINE COAST, QLD (YBSU)

21 MAR 2024



DME DIST									NOT APPLICABLE
ALT									



- NOTES**
- MAX IAS:
HOLDING: 180KT.
INITIAL :
CAT C&D 180KT.
CIRCLING 190KT.
 - PROC PARTIALLY OCTA DURING SU TWR HRS.
 - NO CIRCLING E OF RWY 13/31 AND W BEYOND 4.5NM.
 - PROC TURN(80°/260°)
** RQ TO JOIN PROC FROM HOLD

CATEGORY	A	B	C	D
CIRCLING *	870 (855-2.4)	1160 (1145-4.0)	1260 (1245-5.0)	
ALTERNATE	(1355-4.4)	(1645-6.0)	(1745-7.0)	

Changes: PJE SYMBOLS REMOVED, Editorial.

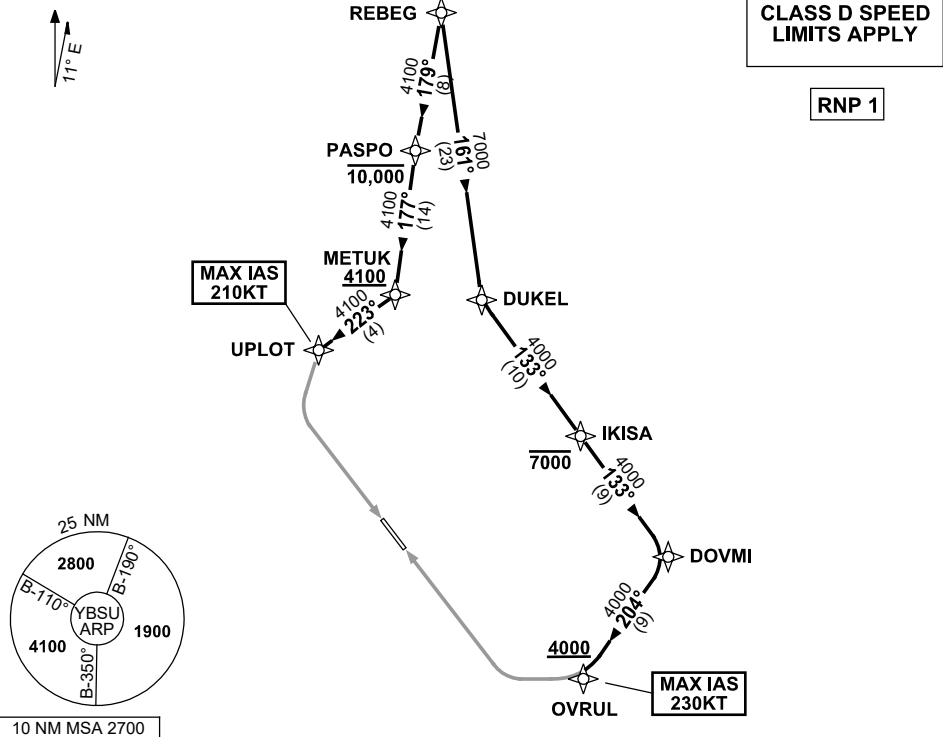
BSUN03-178

**STANDARD INSTRUMENT ARRIVAL (STAR)
REBEG TWO ZULU ARRIVAL (RNAV)
SUNSHINE COAST, QLD (YBSU)**

16 JUN 2022

ATIS/AWIS (AH) 114.2/119.8	SMC 121.1	TWR 124.4	FIA BN CEN 129.0 (CCT AREA) BN CEN 135.2 (ON GROUND AH)	CTAF+AFRU (AH) 124.4	AFRU+PAL 124.4	Bearings are Magnetic Elevations in FEET AMSL
-------------------------------	--------------	--------------	---	-------------------------	-------------------	--

NOT TO SCALE



ARRIVAL: REBEG TWO ZULU

RWY 13:

- From REBEG track 179° to PASPO
Cross PASPO AT or BLW 10,000ft
- Turn LEFT, track 177° to METUK
Cross METUK AT or ABV 4100ft
- Turn RIGHT, track 223° to UPLLOT
MAX IAS 210KT AT UPLLOT
- Track via RNP Z RWY 13

RWY 31:

- From REBEG track 161° to DUKEL
- Turn LEFT, track 133° to IKISA
Cross IKISA AT or BLW 7000ft
- Track 133° to DOVMI
- Turn RIGHT, track 204° to OVRUL
Cross OVRUL AT or ABV 4000ft
MAX IAS 230KT AT OVRUL
- Track via RNP Z RWY 31 or RNP Y RWY 31

COMMUNICATIONS FAILURE: PROCEDURE IN IMC

- Squawk 7600, comply with vertical navigation requirements, but not below MSA.
- Track via the latest STAR clearance to the nominated runway, then fly the most suitable approach in accordance with ERSA EMERG Section 1.5.

Changes: CHART TITLE, PASPO ALT REQUIREMENT.

BSUSR01-171

**STANDARD INSTRUMENT ARRIVAL (STAR)
REBEG TWO X-RAY ARRIVAL (RNAV)
SUNSHINE COAST, QLD (YBSU)**

16 JUN 2022

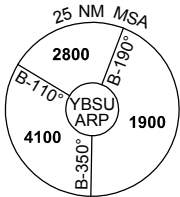
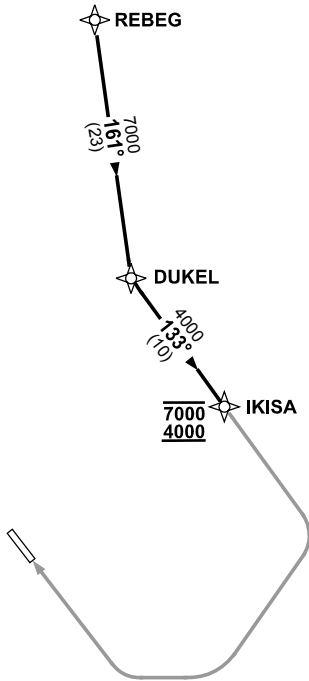
ATIS/AWIS (AH) 114.2/119.8	SMC 121.1	TWR 124.4	FIA BN CEN 129.0 (CCT AREA) BN CEN 135.2 (ON GROUND AH)	CTAF+AFRU (AH) 124.4	AFRU+PAL 124.4	Bearings are Magnetic Elevations in FEET AMSL
--------------------------------------	---------------------	---------------------	---	--------------------------------	--------------------------	--

NOT TO SCALE



**CLASS D SPEED
LIMITS APPLY**

RNP 1



10 NM MSA 2700

ARRIVAL: REBEG TWO X-RAY

RWY 31:

- From REBEG track 161° to DUKEL
- Turn LEFT, track 133° to IKISA
- **Cross IKISA BTN 4000FT and 7000FT**
- Track via RNP X RWY 31 (AR)

COMMUNICATIONS FAILURE: PROCEDURE IN IMC

- Squawk 7600, comply with vertical navigation requirements, but not below MSA.
- Track via the latest STAR clearance to the nominated runway, then fly the most suitable approach in accordance with ERSA EMERG Section 1.5.

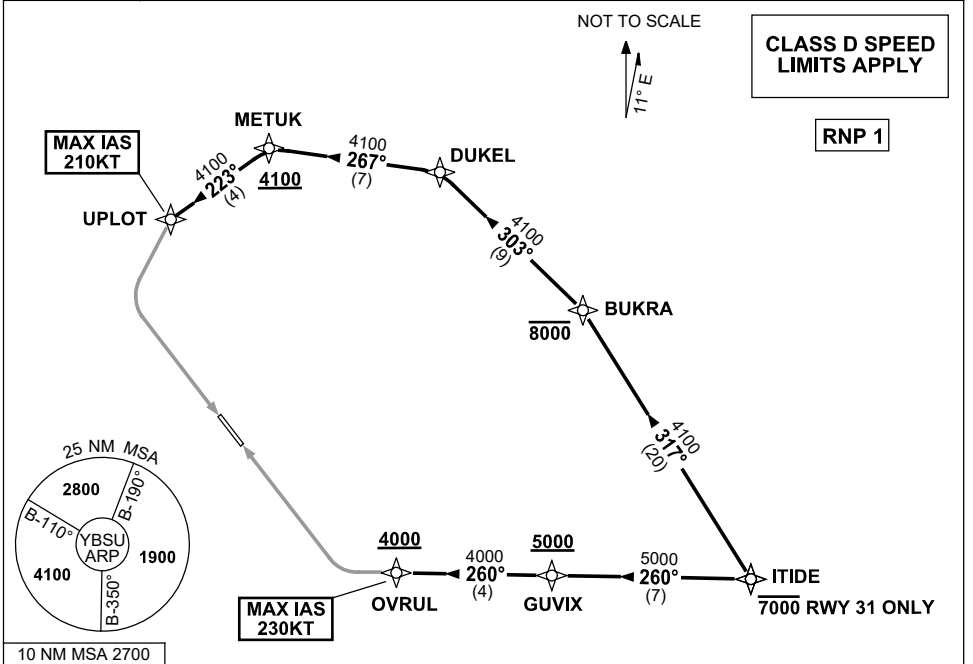
Changes: PROC NUMBER.

BSUSR02-171

**STANDARD INSTRUMENT ARRIVAL (STAR)
ITIDE TWO ZULU ARRIVAL (RNAV)
SUNSHINE COAST, QLD (YBSU)**

8 SEP 2022

ATIS/AWIS (AH) 114.2/119.8	SMC 121.1	TWR 124.4	FIA BN CEN 129.0 (CCT AREA) BN CEN 135.2 (ON GROUND AH)	CTAF+AFRU (AH) 124.4	AFRU+PAL 124.4	Bearings are Magnetic Elevations in FEET AMSL
-------------------------------	--------------	--------------	---	-------------------------	-------------------	--



ARRIVAL: ITIDE TWO ZULU

RWY 13:

- From ITIDE, track 317° to BUKRA
Cross BUKRA AT or BLW 8000ft
- Turn LEFT, track 303° to DUKEL
- Turn LEFT, track 267° to METUK
Cross METUK AT or ABV 4100ft
- Turn LEFT, track 223° to UPLOTT
MAX IAS 210KT AT UPLOTT
- Track via RNP Z RWY 13

RWY 31:

- From ITIDE, AT or BLW 7000ft
- Track 260° to GUVIX
Cross GUVIX AT or ABV 5000ft
- Track 260° to OVRUL
Cross OVRUL AT or ABV 4000ft
MAX IAS 230KT AT OVRUL
- Track via RNP Z RWY 31 or RNP Y RWY 31

COMMUNICATIONS FAILURE: PROCEDURE IN IMC

- Squawk 7600, comply with vertical navigation requirements, but not below MSA.
- Track via the latest STAR clearance to the nominated runway, then fly the most suitable approach in accordance with ERSA EMERG Section 1.5.

Changes: Editorial.

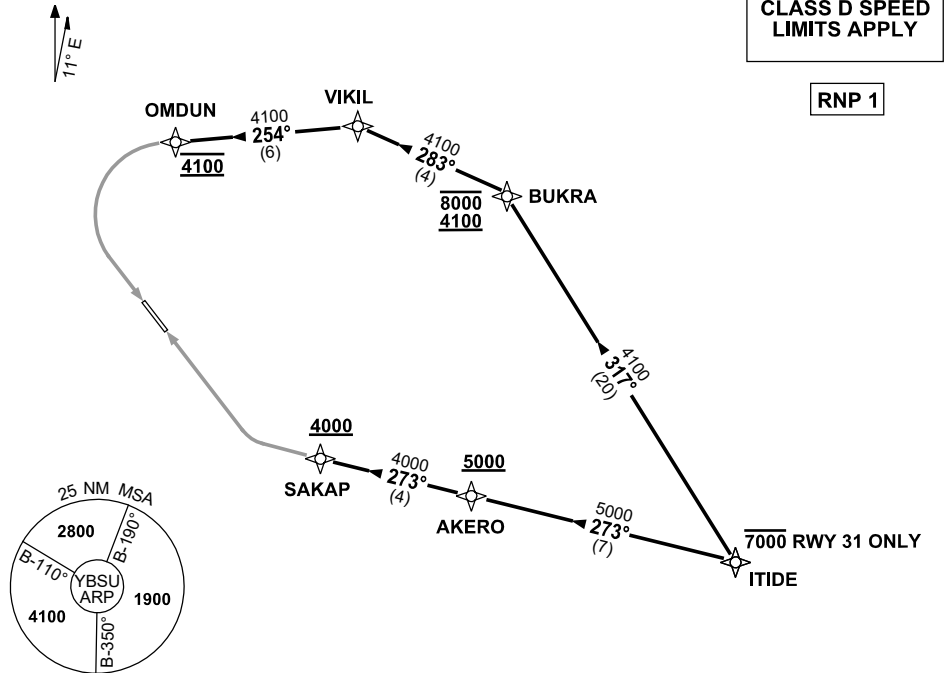
BSUSR03-172

**STANDARD INSTRUMENT ARRIVAL (STAR)
ITIDE TWO WHISKEY ARRIVAL (RNAV)
SUNSHINE COAST, QLD (YBSU)**

8 SEP 2022

ATIS/AWIS (AH) 114.2/119.8	SMC 121.1	TWR 124.4	FIA BN CEN 129.0 (CCT AREA) BN CEN 135.2 (ON GROUND AH)	CTAF+AFRU (AH) 124.4	AFRU+PAL 124.4	Bearings are Magnetic Elevations in FEET AMSL
-------------------------------	--------------	--------------	---	-------------------------	-------------------	--

NOT TO SCALE



ARRIVAL: ITIDE TWO WHISKEY

RWY 13:

- From ITIDE, track 317° to BUKRA
Cross BUKRA BTN 4100ft and 8000ft
- Turn LEFT, track 283° to VIKIL
- Turn LEFT, track 254° to OMDUN
- Track via RNP W RWY 13 (AR)

RWY 31:

- From ITIDE AT or BLW 7000FT
- Track 273° to AKERO
Cross AKERO AT or ABV 5000ft
- Track 273° to SAKAP
Cross SAKAP AT or ABV 4000ft
- Track via RNP W RWY 31 (AR)

COMMUNICATIONS FAILURE: PROCEDURE IN IMC

- Squawk 7600, comply with vertical navigation requirements, but not below MSA.
- Track via the latest STAR clearance to the nominated runway, then fly the most suitable approach in accordance with ERSA EMERG Section 1.5.

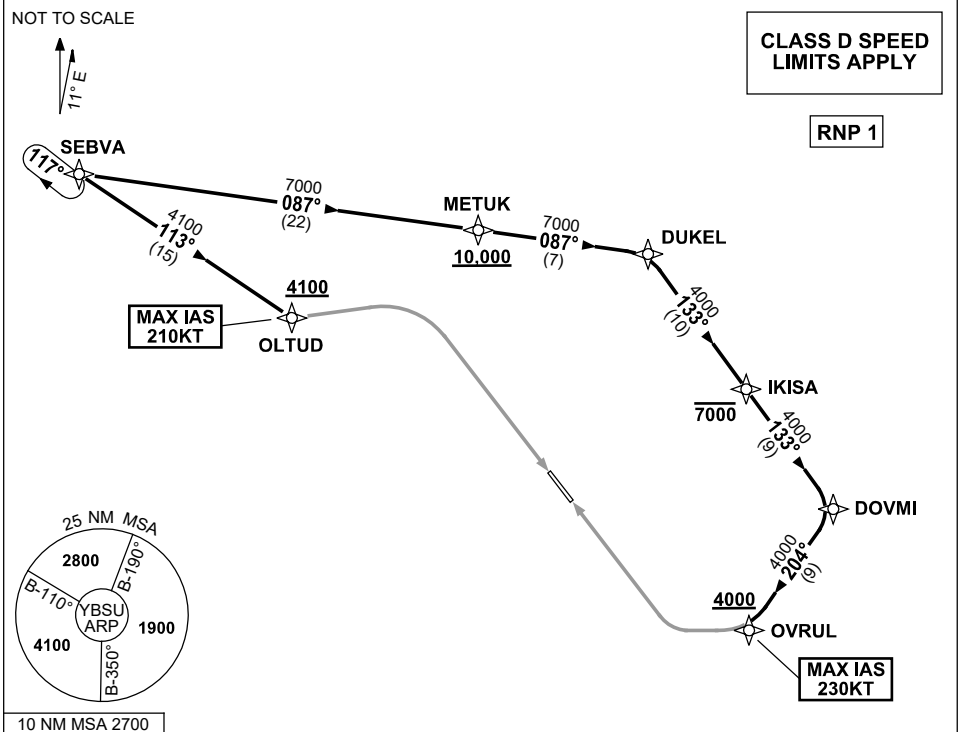
Changes: REVISED PROC.

BSUSR04-172

**STANDARD INSTRUMENT ARRIVAL (STAR)
SEBVA ONE ZULU ARRIVAL (RNAV)
SUNSHINE COAST, QLD (YBSU)**

8 SEP 2022

ATIS/AWIS (AH) 114.2/119.8	SMC 121.1	TWR 124.4	FIA BN CEN 129.0 (CCT AREA) BN CEN 135.2 (ON GROUND AH)	CTAF+AFRU (AH) 124.4	AFRU+PAL 124.4	Bearings are Magnetic Elevations in FEET AMSL
-------------------------------	--------------	--------------	---	-------------------------	-------------------	--



ARRIVAL: SEBVA ONE ZULU

RWY 13:

- From SEBVA track 113° to OLTUD
Cross OLTUD AT or ABV 4100ft
MAX IAS 210KT AT OLTUD
- Track via RNP Z RWY 13

RWY 31:

- From SEBVA, track 087° to METUK
Cross METUK AT or ABV 10,000ft
- Track 087° to DUKEL
- Turn RIGHT, track 133° to IKISA
Cross IKISA AT or BLW 7000ft
- Track 133° to DOVMI
- Turn RIGHT, track 204° to OVRUL
Cross OVRUL AT or ABV 4000ft
MAX IAS 230KT AT OVRUL
- Track via RNP Z RWY 31 or RNP Y RWY 31

COMMUNICATIONS FAILURE: PROCEDURE IN IMC

- Squawk 7600, comply with vertical navigation requirements, but not below MSA.
- Track via the latest STAR clearance to the nominated runway, then fly the most suitable approach in accordance with ERS A EMERG Section 1.5.

Changes: HOLDING.

BSUSR05-172

**STANDARD INSTRUMENT ARRIVAL (STAR)
SEBVA ONE X-RAY ARRIVAL (RNAV)
SUNSHINE COAST, QLD (YBSU)**

8 SEP 2022

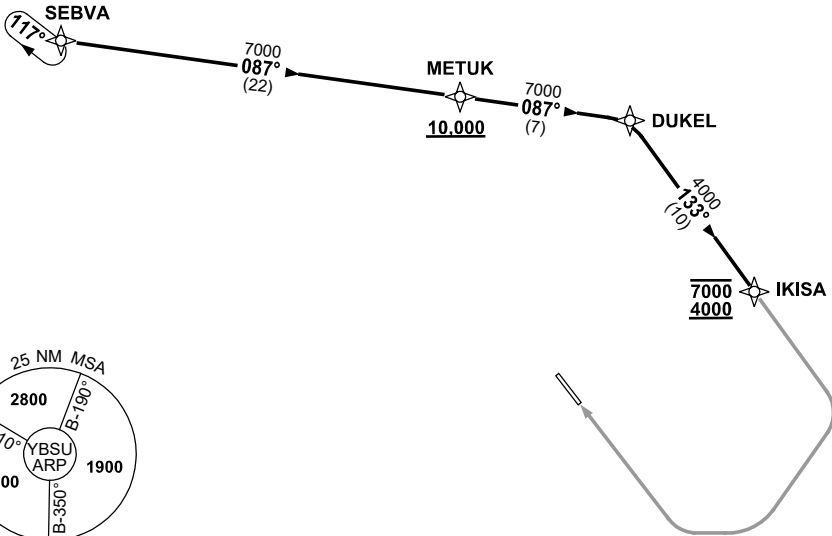
ATIS/AWIS (AH) 114.2/119.8	SMC 121.1	TWR 124.4	FIA BN CEN 129.0 (CCT AREA) BN CEN 135.2 (ON GROUND AH)	CTAF+AFRU (AH) 124.4	AFRU+PAL 124.4	Bearings are Magnetic Elevations in FEET AMSL
-------------------------------	--------------	--------------	---	-------------------------	-------------------	--

NOT TO SCALE



**CLASS D SPEED
LIMITS APPLY**

RNP 1



10 NM MSA 2700

ARRIVAL: SEBVA ONE X-RAY

RWY 31:

- From SEBVA track 087° to METUK
 Cross METUK AT or ABV 10,000FT
- Track 087° to DUKEL
- Turn RIGHT, track 133° to IKISA
 Cross IKISA BTN 4000FT and 7000FT
- Track via RNP X RWY 31 (AR)

COMMUNICATIONS FAILURE: PROCEDURE IN IMC

- Squawk 7600, comply with vertical navigation requirements, but not below MSA.
- Track via the latest STAR clearance to the nominated runway, then fly the most suitable approach in accordance with ERS A EMERG Section 1.5.

Changes: HOLDING.

BSUSR06-172