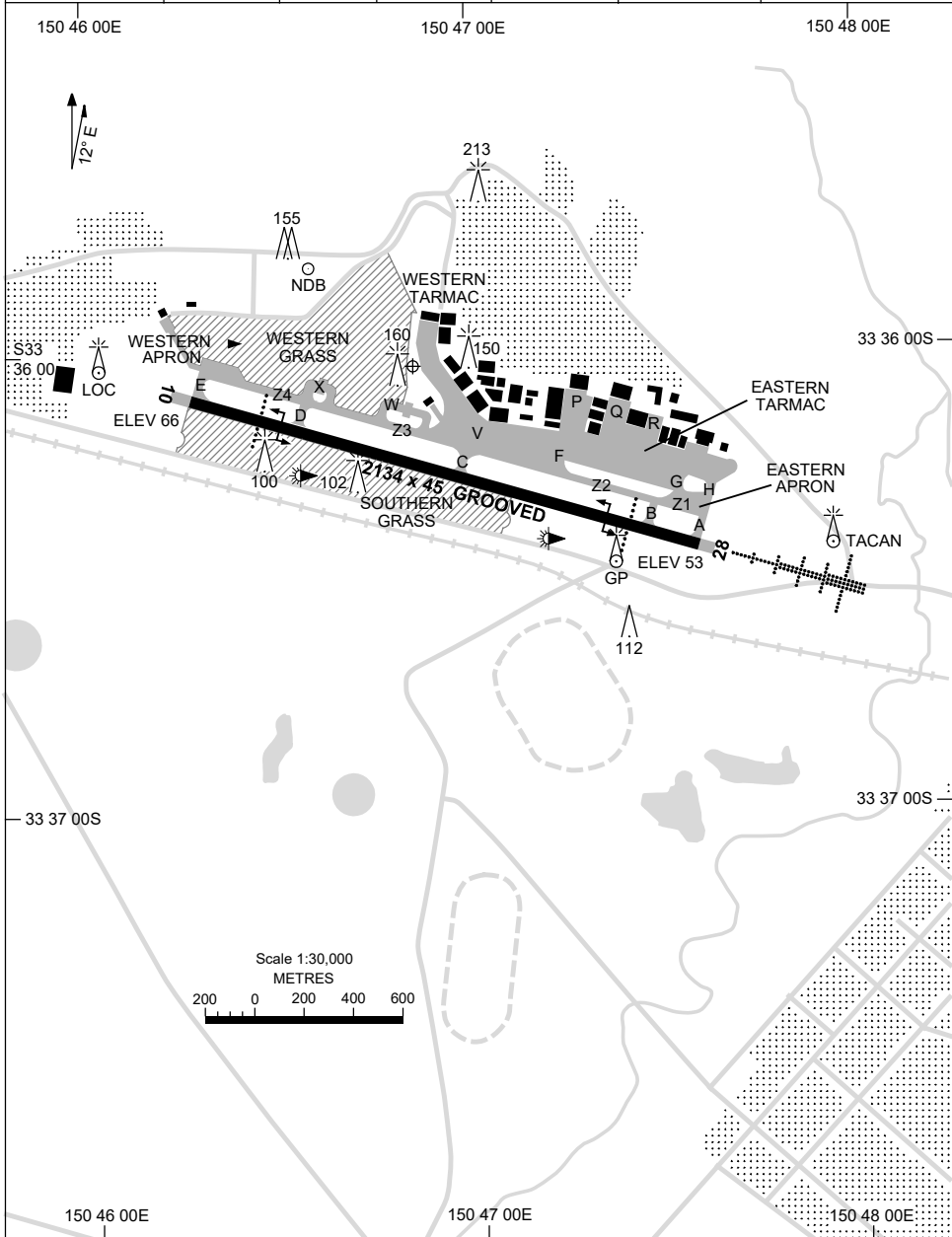


21 MAR 2024

AD ELEV 67
33 36 02S 150 46 51E

AERODROME CHART - Page 1
RICHMOND, NSW (YSRI)

ATIS/AWIS (AH) 126.3 274.55	TWR 135.5 257.3	SMC 128.25	APP 135.9 363.8	FIA (AH) SY CEN 124.55	CTAF+AFRU (AH) 135.5	Bearings are Magnetic Elevations in FEET AMSL
--------------------------------	--------------------	---------------	--------------------	---------------------------	-------------------------	--



Changes: TACAN, Editorial.

SRIAD01-178

7 SEP 2023

AD ELEV 67
33 36 02S 150 46 51E

AERODROME CHART - Page 2
RICHMOND, NSW (YSRI)

ATIS/AWIS (AH) 126.3 274.55	TWR 135.5 257.3	SMC 128.25	APP 135.9 363.8	FIA (AH) SY CEN 124.55	CTAF+AFRU (AH) 135.5	Bearings are Magnetic Elevations in FEET AMSL
--------------------------------	--------------------	---------------	--------------------	---------------------------	-------------------------	--

--	--	--	--	--	--	--

RWY	AERODROME LIGHTING					
	TAXIWAYS : GREEN CENTRELINE RWY 28 : PRECISION APPROACH RL : MAN , SDBY , PTBL (15 MIN PN)					
10 ⁰⁹⁵	PAPI 3.0° 47FT HIRL					
275 28	PAPI 3.0° 48FT HIRL HIAL - CAT I SFL					

NOTES						
--------------	--	--	--	--	--	--

Changes: CAUTION NOTE REMOVED.

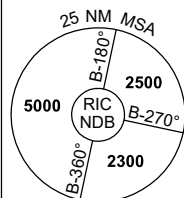
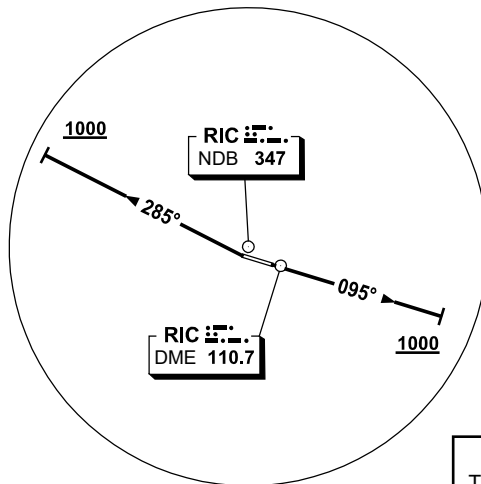
SRIAD02-176

**STANDARD INSTRUMENT DEPARTURES (SID)
RICHMOND FOUR DEPARTURE (RADAR)
RICHMOND, NSW (YSRI)**

30 NOV 2023

ATIS/AWIS (AH) 126.3 274.55	TWR 135.5 257.3	SMC 128.25	APP 135.9 363.8	FIA (AH) SY CEN 124.55	CTAF+AFRU (AH) 135.5	Bearings are Magnetic Elevations in FEET AMSL
--------------------------------	--------------------	---------------	--------------------	---------------------------	-------------------------	--

NOT TO SCALE



**CAUTION:
TREES IN RWY 10
DEP AREA**

10 NM MSA 3300

RICHMOND FOUR DEPARTURE (RADAR)

RWY 10

- Grad 3.3%
- Track 095°
- At 1000ft and not before DER turn to assigned heading or track

RWY 28

- GRAD 4.9% to 2600ft, thence 3.3%
- At DER turn right track 285°
- At 1000ft and not before DER turn to assigned heading

COMMUNICATION FAILURE PROCEDURE

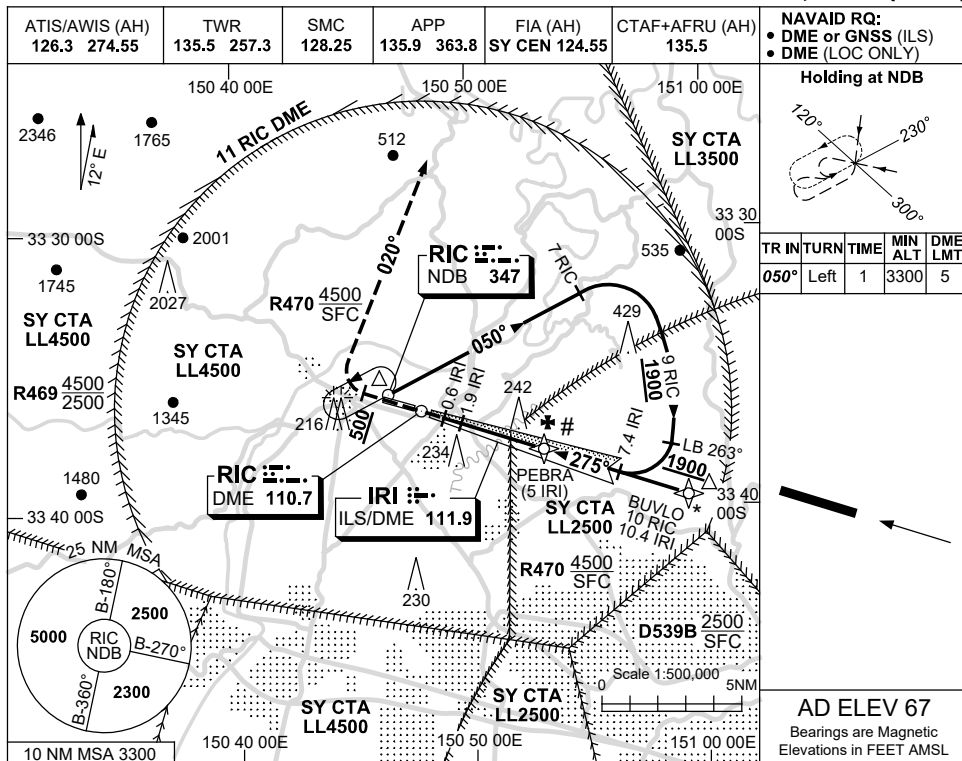
On recognition of communication failure:

- Squawk 7600
- Maintain last assigned vector for two minutes, and
- CLIMB IF NECESSARY TO MINIMUM SAFE ALTITUDE, to maintain terrain clearance, then
- proceed in accordance with the latest ATC route clearance acknowledged.

USE QNH

ILS-Z or LOC-Z RWY 28
RICHMOND, NSW (YSRI)

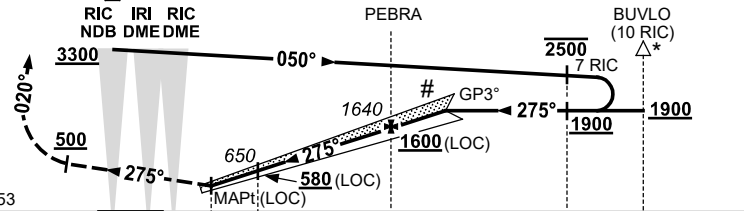
30 NOV 2023



NM TO IRI DME	1.6	1.9	2	3	4	5	5.8					
ALT (3° APCH PATH)	550	650	680	1000	1320	1640	1900					

MISSED APPROACH:

TRACK 275°
 AT 500FT TURN RIGHT,
 TRACK 020°
 CLIMB TO 3300FT OR
 AS DIRECTED BY ATC.



NM TO IRI DME												
NM TO THR 28												

NOTES

- * 1. ACFT MAY BE RADAR VECTORED TO IAF.
- # 2. IF MISSED APCH CONDUCTED PRIOR TO 0.6 IRI, CLIMB NOT ABV 2500FT UNTIL 0.6 IRI.
- 3. USE OF GP RESTR TO WI 7° OF RWY CL.

CATEGORY	A	B	C	D
S-I ILS		360 (307) 0.8		
S-I LOC		550 (497-1.9)		
CIRCLING	800 (733-2.4)		1090 (1023-4.0)	1160 (1093-5.0)
ALTERNATE	(1233-4.4)		(1523-6.0)	(1593-7.0)

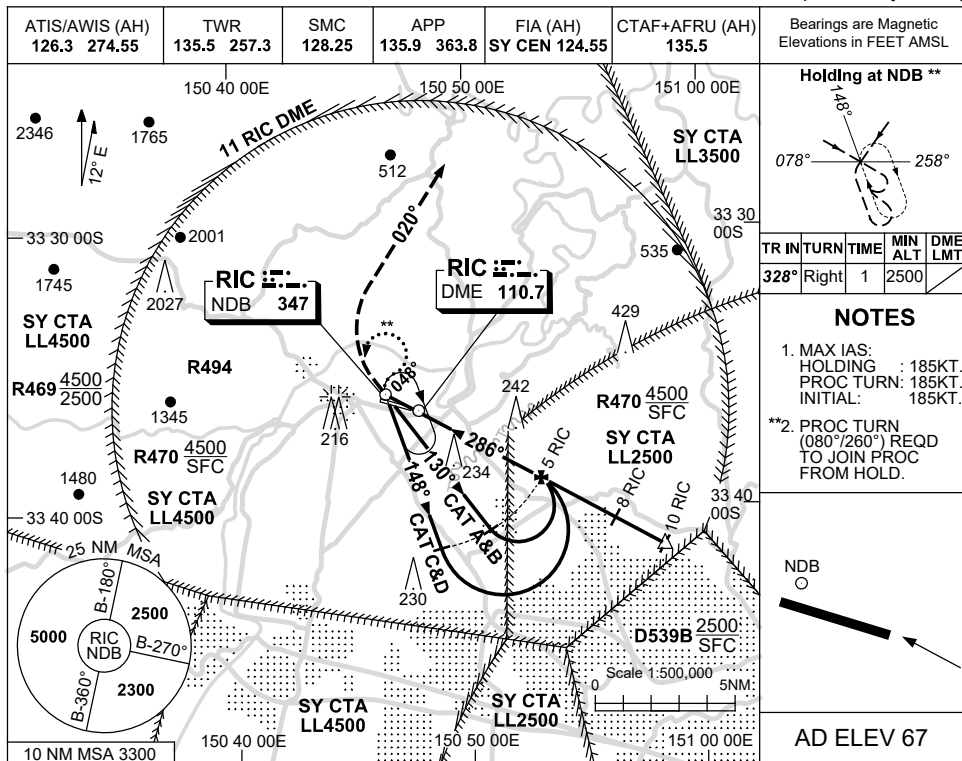
Changes: POWERLINE ADDED, MODEL ACFT SYMBOL REMOVED, Editorial.

SR1101-177

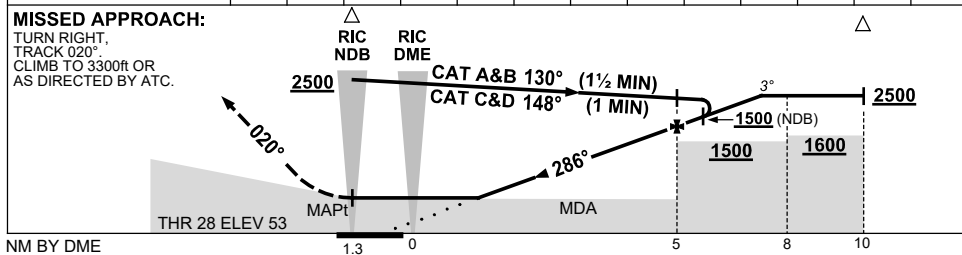
USE QNH

NDB-B or NDB RWY 28
RICHMOND, NSW (YSRI)

21 MAR 2024



DIST BY DME	1.6	2	3	4	4.1	5	6	7	7.3			
ALT (3° APCH PATH)	680	820	1140	1460	1500	1780	2100	2420	2500			



NOTES

CATEGORY	A	B	C	D
S-I NDB/DME	750 (697-4.0)			
NDB	CIRCLING ONLY			
CIRCLING	800 (733-2.4)	1090 (1023-4.0)		1160 (1093-5.0)
ALTERNATE	(1233-4.4)		(1523-6.0) (1593-7.0)	

3. BRG FLUCTUATIONS UP TO 7° ON 148° OUTBOUND LEG BTN 4 AND 5NM.

4. IF MISSED APCH CONDUCTED PRIOR TO NDB CLIMB NOT ABV 2500ft UNTIL NDB.

Changes: VIS.

SRINB01-178