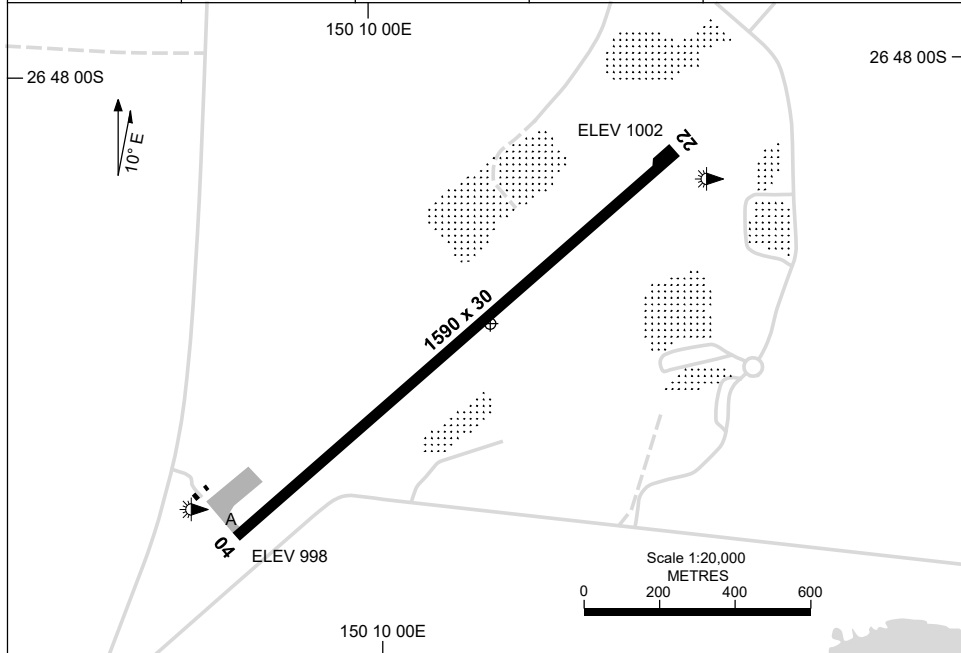


8 SEP 2022

AD ELEV 1002  
26 48 22S 150 10 11E

AERODROME CHART  
MILES, QLD (YMLS)

FIA BN CEN 123.95	CTAF+AFRU 126.35	AFRU+PAL 126.35	Bearings are Magnetic Elevations in FEET AMSL
----------------------	---------------------	--------------------	--



RWY		AERODROME LIGHTING
		TAXIWAY : BLUE EDGE RL : AFRU+PAL 126.35 , SDBY (11 SEC)
<b>04</b> <sup>040</sup>		LIRL
<sup>220</sup> <b>22</b>		LIRL

**NOTES**

1. FIA FREQ 123.95 AVBL IN CIRCUIT.

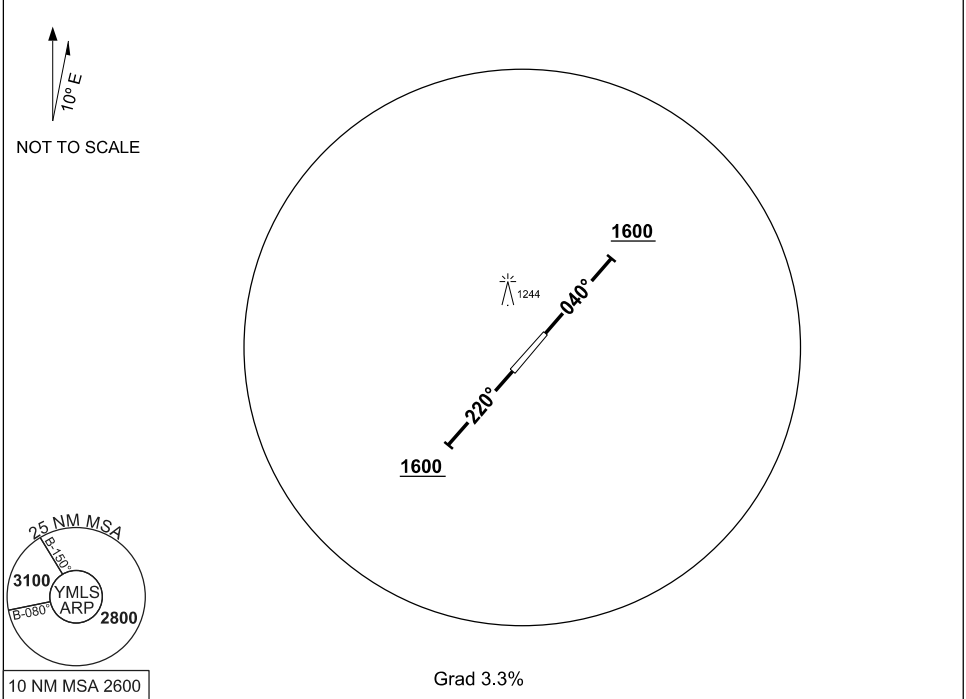
Changes: SDBY SWITCH TIME, TWY LIGHTING.

MLSAD01-172

**STANDARD INSTRUMENT DEPARTURE (SID)  
MILES ONE DEPARTURE  
MILES, QLD (YMLS)**

**23 MAR 2023**

FIA <b>BN CEN 123.95</b>	CTAF+AFRU <b>126.35</b>	AFRU+PAL <b>126.35</b>			Bearings are Magnetic Elevations in FEET AMSL
-----------------------------	----------------------------	---------------------------	--	--	--



<p><b>MILES ONE DEPARTURE</b></p> <p>RWY 04</p> <ul style="list-style-type: none"> <li>• Track 040°</li> <li>• At or above 1600FT turn as required</li> <li>• Intercept flight plan route</li> </ul>	<p>RWY 22</p> <ul style="list-style-type: none"> <li>• Track 220°</li> <li>• At or above 1600FT turn as required</li> <li>• Intercept flight plan route</li> </ul>
--	--

**NOTES**

- NIL -

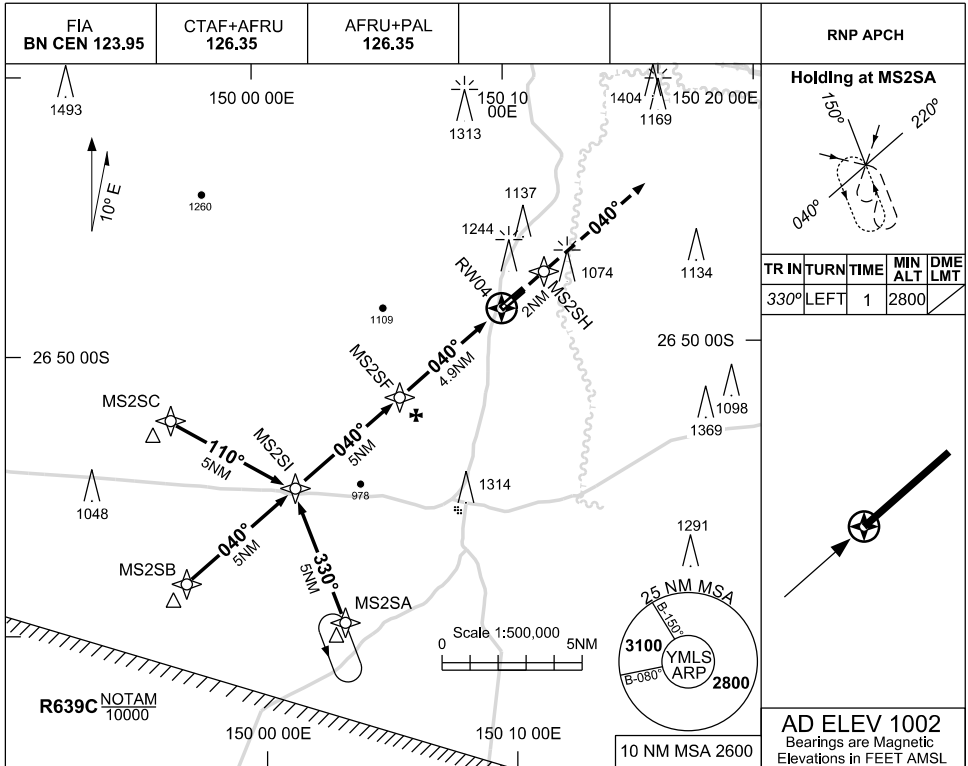
Changes: 25NM MSA.

MLSDP01-174

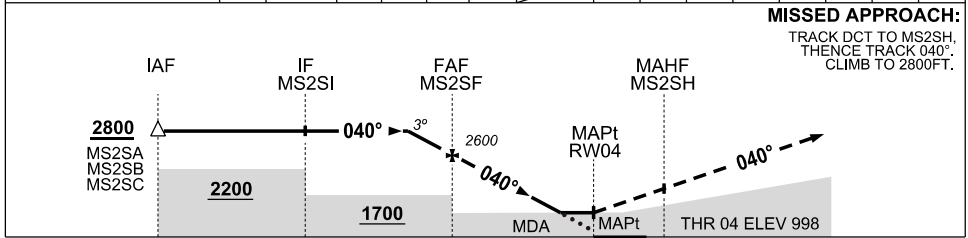
USE QNH

RNP RWY 04  
MILES, QLD (YMLS)

23 MAR 2023



NM TO NEXT WPT	1.6	MS2SF	4	3	2	1.7	RW04													
ALT (3° APCH PATH)	2800	2600	2320	2010	1690	1590														



**MISSED APPROACH:**  
TRACK DCT TO MS2SH,  
THENCE TRACK 040°.  
CLIMB TO 2800FT.

**NOTES**

- MAX IAS:  
INITIAL : 210KT.  
HOLDING : 210KT.

CATEGORY	A	B	C	D
LNAV	1590 (588 - 3.3)			NOT APPLICABLE
CIRCLING	1690 (688 - 2.4)		1800(798 - 4.0)	
ALTERNATE	(2190 - 4.4)		(2300 - 6.0)	

Changes: 25NM MSA, WPT IDENT.

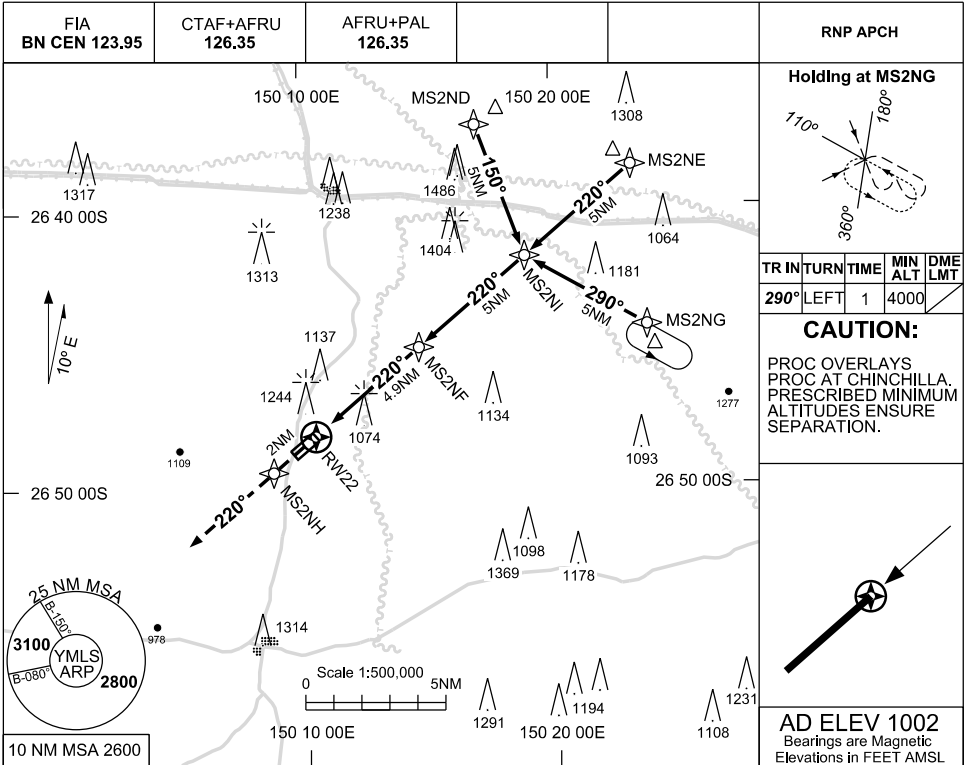
MLSGN01-174



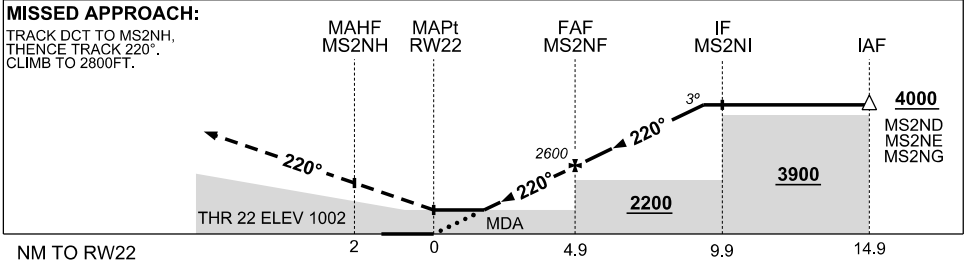
USE QNH

RNP RWY 22  
MILES, QLD (YMLS)

23 MAR 2023



NM TO NEXT WPT	RW22	1.7	2	3	4	MS2NF	1	2	3	4	4.4					
ALT (3° APCH PATH)		1580	1690	2010	2330	2600	2910	3230	3550	3870	4000					



- NOTES**
- MAX IAS: INITIAL : 210KT. HOLDING : 210KT.

CATEGORY	A	B	C	D
LNAV	<b>1580</b> (578 - 3.3)			<b>NOT APPLICABLE</b>
CIRCLING	<b>1690</b> (688 - 2.4)		<b>1800</b> (798 - 4.0)	
ALTERNATE	(2190 - 4.4)		(2300 - 6.0)	

Changes: 25NM MSA, WPT IDENT.

MLSGN02-174

