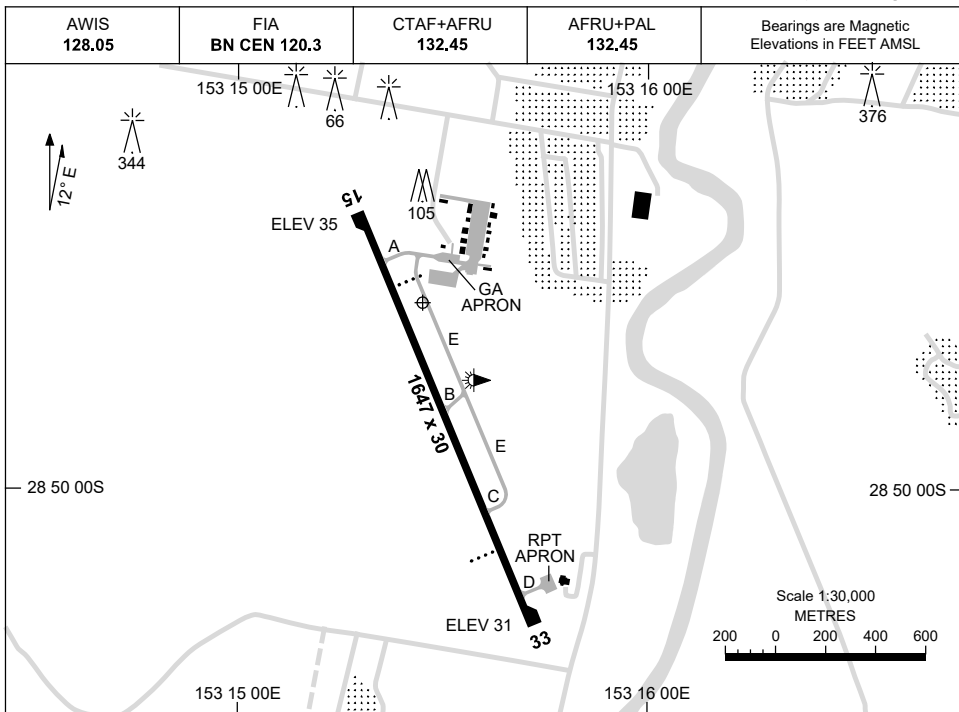


7 SEP 2023

AD ELEV 35
28 49 36S 153 15 27E

AERODROME CHART
LISMORE, NSW (YLIS)



AERODROME LIGHTING	
RWY	TAXIWAY : BLUE EDGE RL : AFRU+PAL 132.45 ; SDBY (15 SEC)
15 ¹⁴⁶ 326 33	PAPI LEFT SIDE 3.0° 42FT LIRL RTIL PAPI LEFT SIDE 3.0° 42FT LIRL RTIL

NOTES

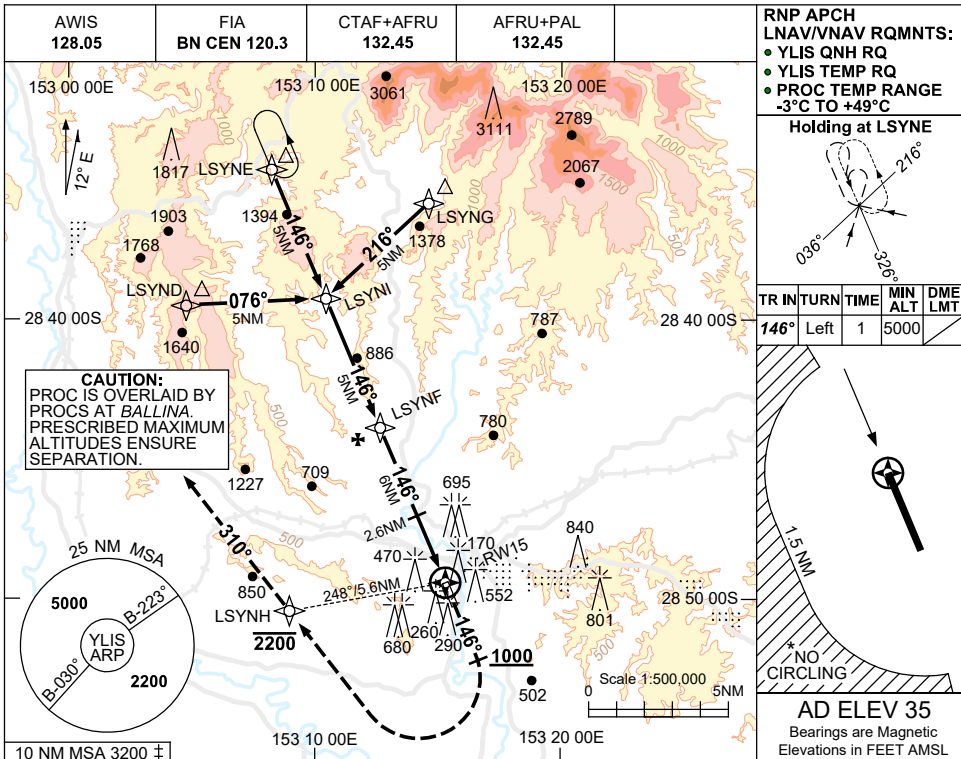
Changes: NOTES.

LISAD01-176

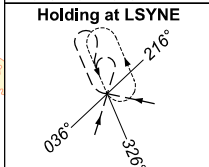
USE QNH

RNP RWY 15
LISMORE, NSW (YLIS)

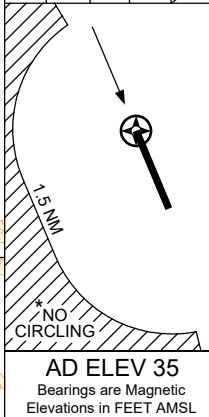
7 SEP 2023



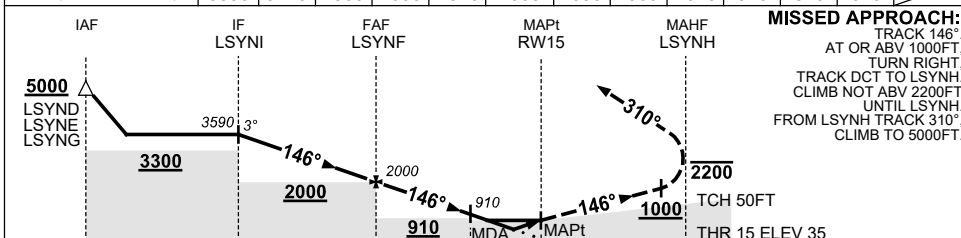
RNP APCH
LNAV/VNAV RQMNTS:
• YLIS QNH RQ
• YLIS TEMP RQ
• PROC TEMP RANGE
-3°C TO +49°C



TR IN	TURN	TIME	MIN ALT	DME LMT
146°	Left	1	5000	



NM TO NEXT WPT	LSYNI	4	3	2	1	LSYNF	5	4	3	2.6	2.3	1.7	RW15
ALT (3° APCH PATH)	3590	3270	2950	2630	2310	2000	1680	1360	1040	910	810	620	



MISSED APPROACH:
TRACK 146°
AT OR ABV 1000FT,
TURN RIGHT,
TRACK DCT TO LSYNH.
CLIMB NOT ABV 2200FT
UNTIL LSYNH.
FROM LSYNH TRACK 310°,
CLIMB TO 5000FT.

NOTES

- MAX IAS:
INITIAL : 210KT.
MAP TURN: 190KT.
- NO CIRCLING WEST OF RWY 15/33 BEYOND 1.5NM.
- 10 NM MSA IS A COMBINED AREA FOR YLIS, YBNA.
- COLOUR: SEE SPEC NOTICES.

CATEGORY	A	B	C	D
LNAV/VNAV		620 (585-3.3)		NOT APPLICABLE
LNAV		810 (775-4.4)		
CIRCLING *	1060 (1025-2.4)		1310 (1275-4.0)	
ALTERNATE	(1525-4.4)		(1775-6.0)	

Changes: MODEL ACFT SYMBOL REMOVED.

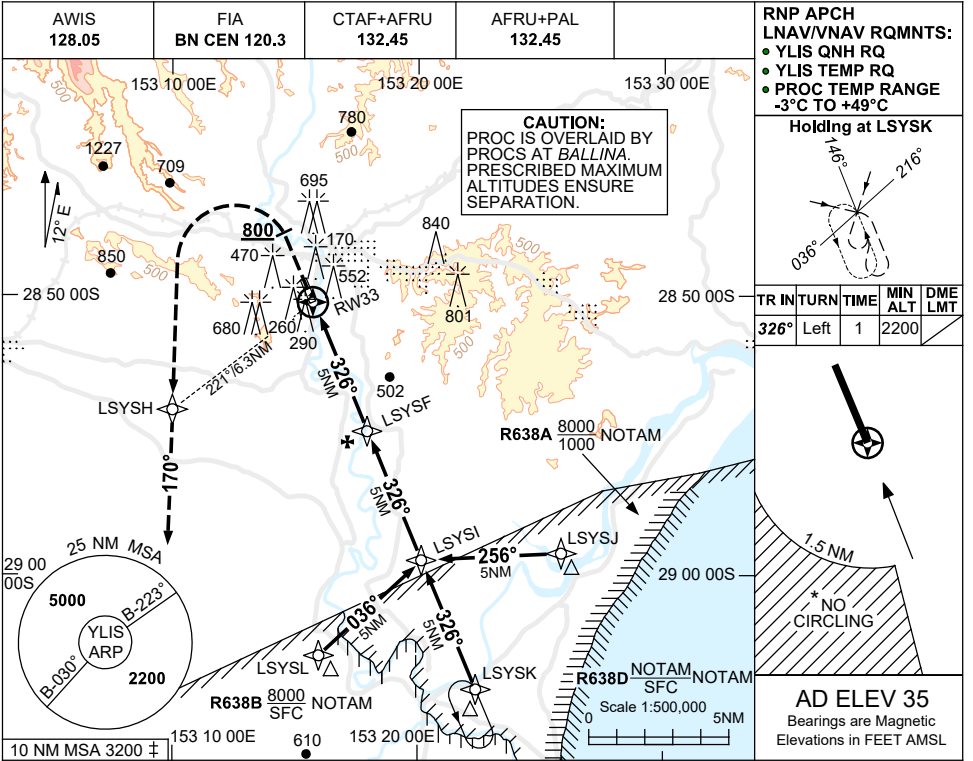
LISGN01-176

USE QNH

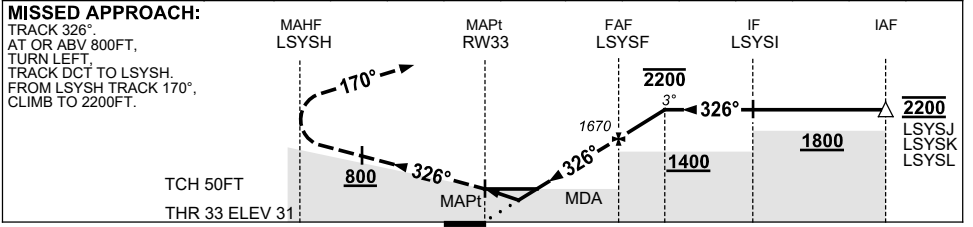
RNP RWY 33

7 SEP 2023

LISMORE, NSW (YLIS)



NM TO NEXT WPT	RW33	1.6	2.2	3	4	LSYSF	1	1.7			
ALT (3° APCH PATH)		590	790	1040	1350	1670	1990	2200			



NM TO RW33: 0, 5, 6.7, 10, 15

NOTES

1. MAX IAS:
INITIAL : 210KT.
MAP TURN: 190KT.
- *2. NO CIRCLING WEST OF RWY 15/33 BEYOND 1.5NM.
- ‡3. 10 NM MSA IS A COMBINED AREA FOR YLIS, YBNA.
4. PROCEDURE NOT AVBL WHEN R638 ACTIVE.
5. COLOUR: SEE SPEC NOTICES.

CATEGORY	A	B	C	D
LNAV/VNAV	590 (559-3.2)			NOT APPLICABLE
LNAV	790 (755-4.3)			
CIRCLING*	1060 (1025-2.4)		1310 (1275-4.0)	
ALTERNATE	(1525-4.4)		(1775-6.0)	

Changes: MODEL ACFT SYMBOL REMOVED.

LISGN02-176