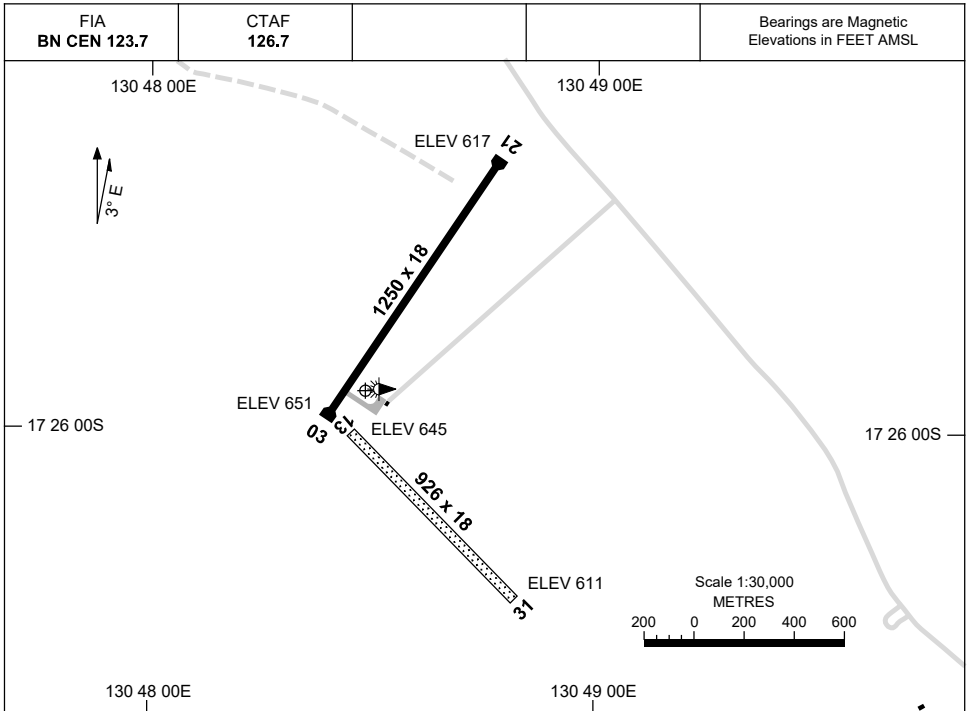


7 SEP 2023

AD ELEV 652
17 25 55S 130 48 29E

AERODROME CHART
KALKGURUNG, NT (YKKG)



RWY	AERODROME LIGHTING	
		RL : SOLAR, EMERG ONLY, PN (ARO AH 0428 035 444. PH AH EMERG (POLICE) 08 8975 0790)
03 <small>031</small>		NIL
<small>211</small> 21		NIL
31 <small>311</small>		NIL
<small>131</small> 13		NIL

NOTES

1. RUNWAY LIGHTING AVBL FOR MED EMERG AND POLICE ACFT ONLY.
2. FIA FREQ 123.7 AVBL 4,000FT.

Changes: NOTES.

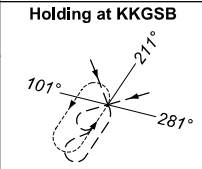
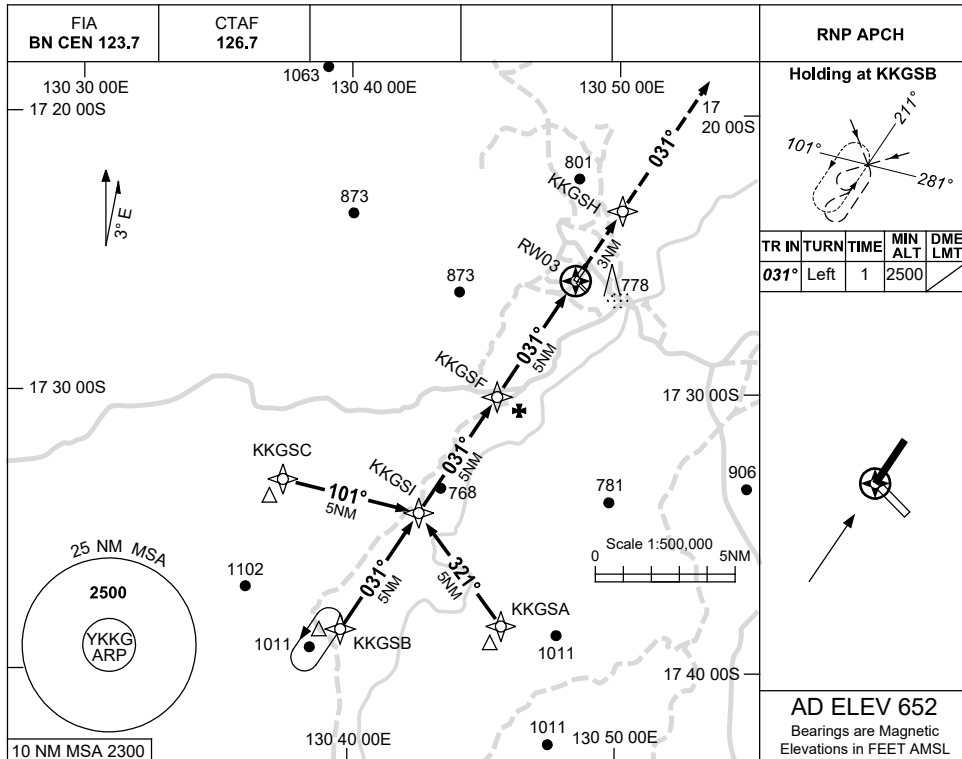
KKGAD01-176

USE QNH

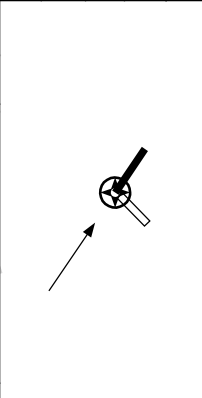
RNP RWY 03

KALKGURUNG, NT (YKKG)

8 SEP 2022

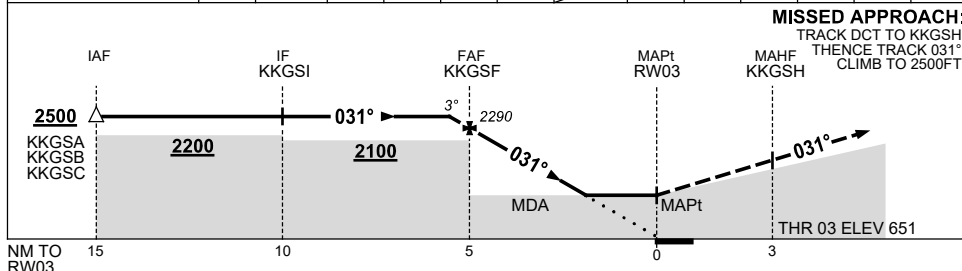


TR	IN	TURN	TIME	MIN	DME
				ALT	LMT
031°	Left		1	2500	



AD ELEV 652
Bearings are Magnetic
Elevations in FEET AMSL

NM TO NEXT WPT	0.6	KKGSF	4	3	2	1.6	RW03
ALT (3° APCH PATH)	2500	2290	1970	1660	1340	1210	



MISSED APPROACH:
TRACK DCT TO KKGSH,
THENCE TRACK 031°,
CLIMB TO 2500FT.

NOTES

CATEGORY	A	B	C	D
LNAV	1210 (558-3.2)			NOT APPLICABLE
CIRCLING	1390 (738-2.4)		1550 (898-4.0)	
ALTERNATE	(1238-4.4)		(1398-6.0)	

- MAX IAS:
INITIAL : 210KT.
- FIA FREQ NOT AVBL
BLW 4000FT.

Changes: CHART TITLE, PBN SPECIFICATION BOX.

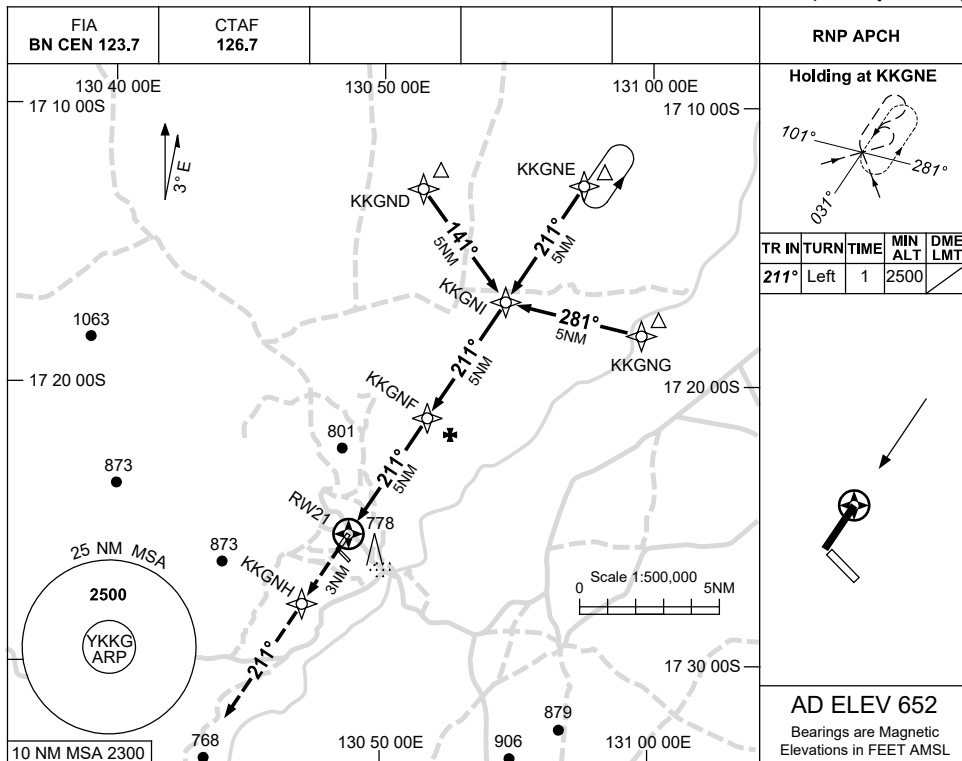
KKGGN01-172

USE QNH

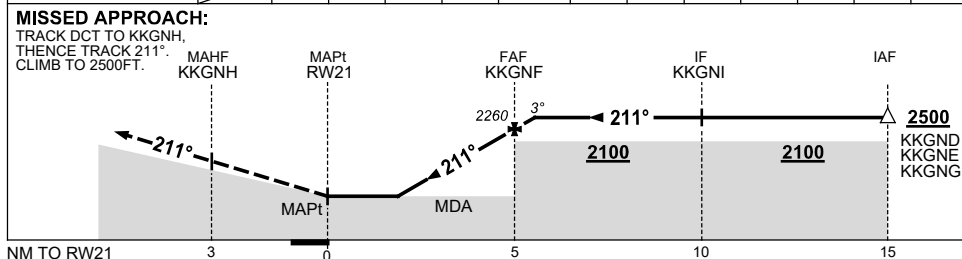
RNP N

8 SEP 2022

KALKGURUNG, NT (YKKG)



NM TO NEXT WPT	RW21	2.3	2.8	3	4	KKGNF	0.8					
ALT (3° APCH PATH)		1390	1550	1620	1940	2260	2500					



NOTES

CATEGORY	A	B	C	D
				NOT APPLICABLE
CIRCLING	1390 (738-2.4)		1550 (898-4.0)	
ALTERNATE	(1238-4.4)		(1398-6.0)	

1. MAX IAS:
INITIAL : 210KT.
2. FIA FREQ NOT AVBL
BLW 4000FT.

Changes: CHART TITLE, PBN SPECIFICATION BOX.

KKGGN02-172