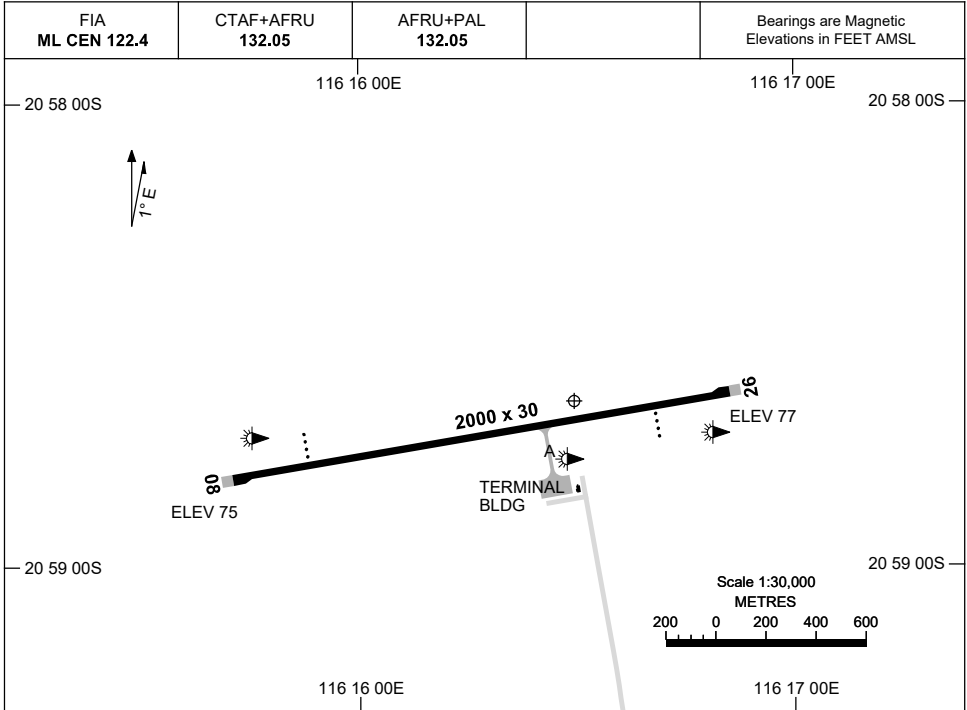


15 JUN 2023

AD ELEV 77  
20 58 38S 116 16 30E

AERODROME CHART  
**CAPE PRESTON, WA (YCPR)**



	<b>AERODROME LIGHTING</b>
<b>RWY</b>	TAXIWAY : BLUE EDGE RL : AFRU+PAL 132.05
<b>08</b> <small>079</small>	PAPI 3.0° 48.5FT LIRL
<small>259</small> <b>26</b>	PAPI 3.0° 48.5FT LIRL

**NOTES**

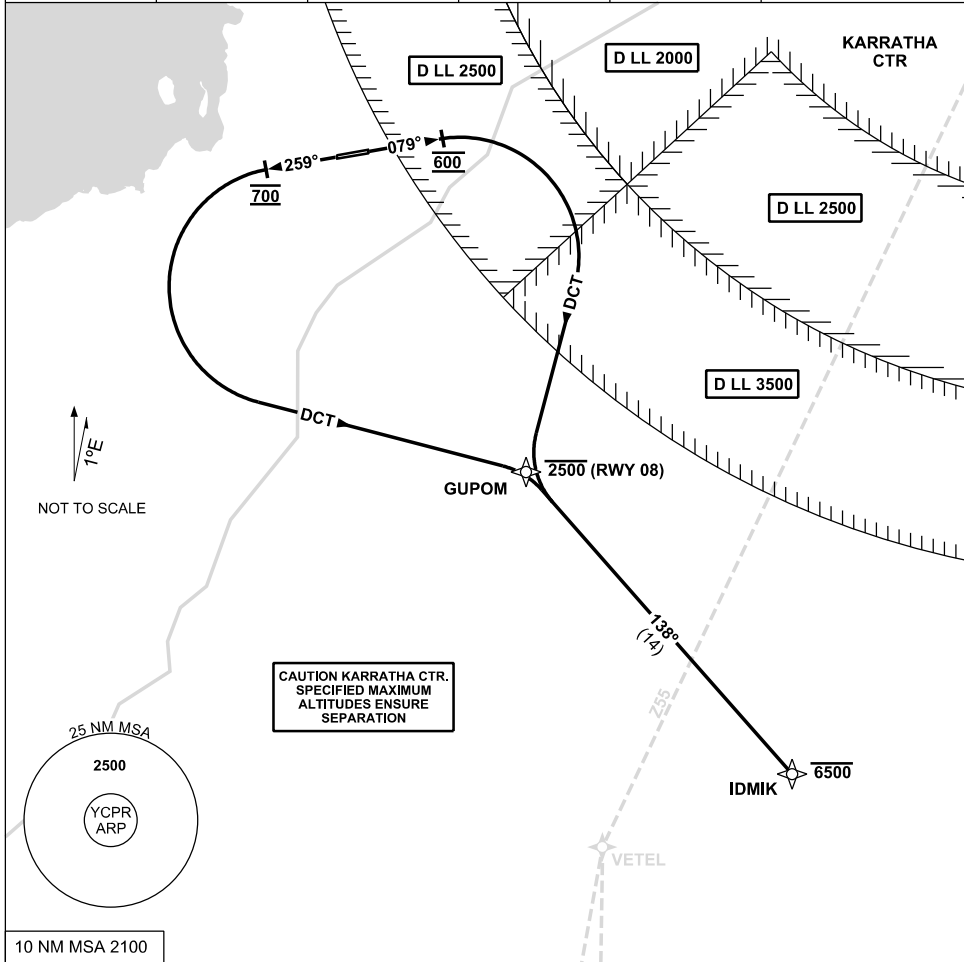
Changes: TERMINAL BLDG AND NOTES.

CPRAD01-175

STANDARD INSTRUMENT DEPARTURE (SID)  
 IDMIK ONE DEPARTURE (RNAV) - RWY 08 & 26  
**CAPE PRESTON, WA (YCPR)**

30 NOV 2023

FIA ML CEN 122.4	CTAF+AFRU 132.05	AFRU+PAL 132.05		Bearings are Magnetic Elevations in FEET AMSL
---------------------	---------------------	--------------------	--	--



<p><b>IDMIK ONE DEPARTURE (RNAV)</b></p> <p><b>RWY 08</b></p> <ul style="list-style-type: none"> <li>• Track 079°</li> <li>• <b>AT 600FT</b> turn <b>RIGHT</b> track DCT to GUPOM Cross GUPOM AT or BLW 2500FT</li> <li>• Track 138° to IDMIK Cross IDMIK AT or BLW 6500FT</li> <li>• Intercept flight planned route</li> </ul>	<p><b>RWY 26</b></p> <ul style="list-style-type: none"> <li>• Track 259°</li> <li>• <b>AT 700FT</b> turn <b>LEFT</b> track DCT to GUPOM</li> <li>• Track 138° to IDMIK Cross IDMIK AT or BLW 6500FT</li> <li>• Intercept flight planned route</li> </ul>
---	--

Changes: CHART TITLE, EDITORIAL

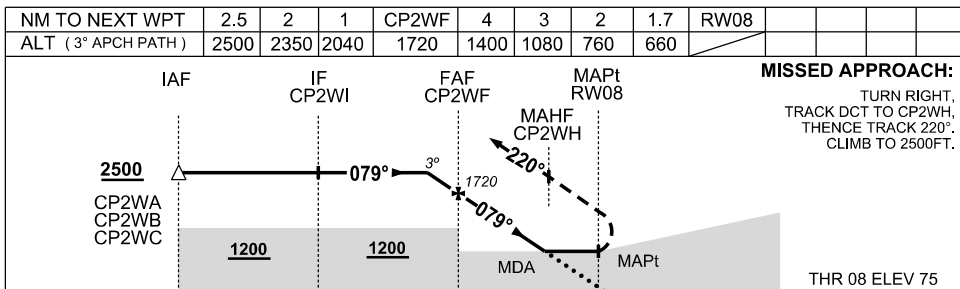
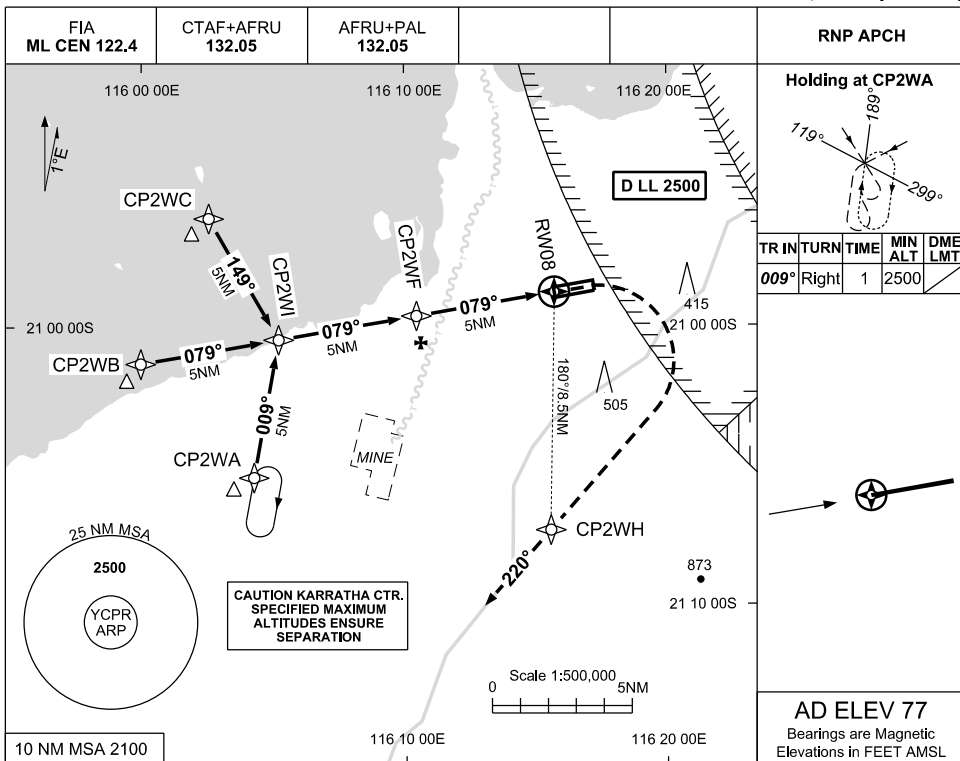
CPRDP01-177

USE QNH

RNP RWY 08

30 NOV 2023

CAPE PRESTON, WA (YCPR)



**NOTES**

- MAX IAS : INITIAL: 210KT MAP TURN: 210KT

CATEGORY	A	B	C	D
LNAV	660 (583-3.2)			NOT AUTHORISED
CIRCLING	850 (773-2.4)		1050(973-4.0)	
ALTERNATE	(1273-4.4)		(1473-6.0)	

Changes: CHART TITLE, WPT IDENT, EDITORIAL

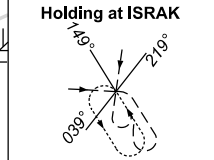
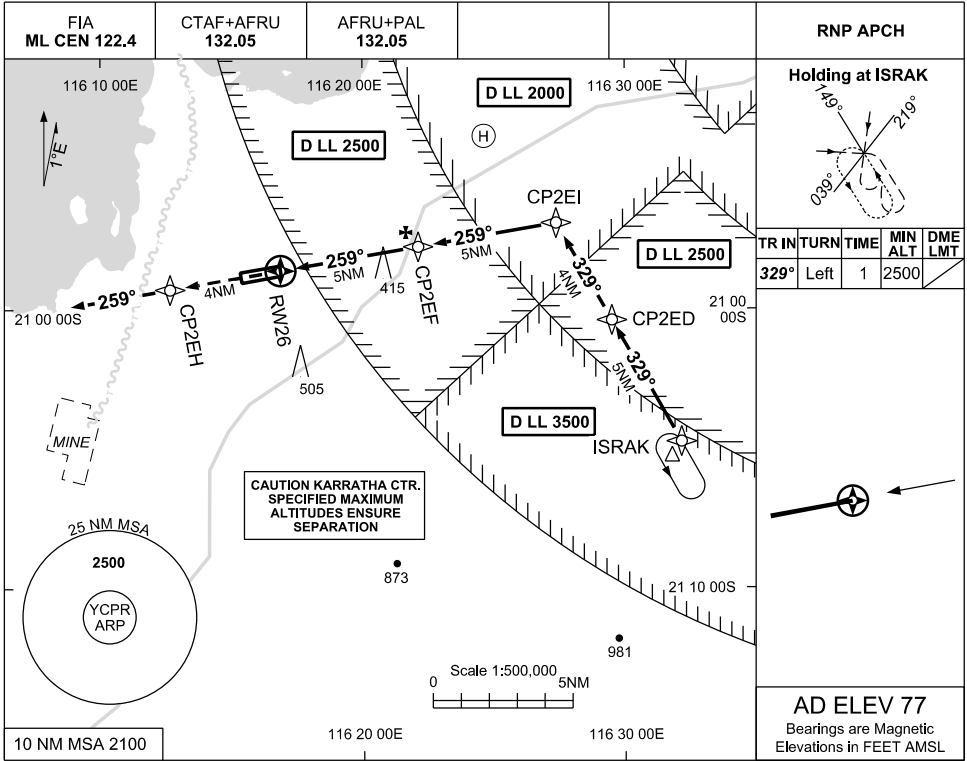
CPRGN01-177

USE QNH

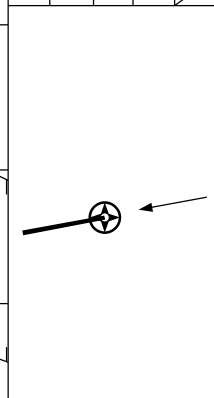
RNP RWY 26

30 NOV 2023

CAPE PRESTON, WA (YCPR)

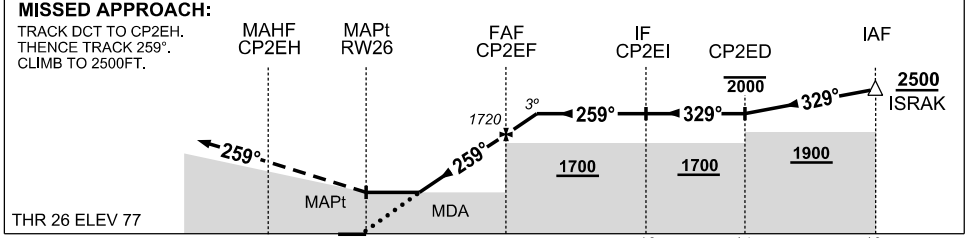


TR	INTURN	TIME	MIN ALT	DME LMT
329°	Left	1	2500	



**AD ELEV 77**  
Bearings are Magnetic  
Elevations in FEET AMSL

NM TO NEXT WPT	RW26	1.5	2	3	4	CP2EF	0.9				
ALT (3° APCH PATH)		610	760	1080	1400	1720	2000				



- NOTES**
- MAX IAS : INITIAL: 210KT HOLDING: 210KT
  - PROC OVERLAID BY KARRATHA CLASS D AIRSPACE - CLR RQ TO ENTER CTA
  - HEL OPS 9NM ENE ARP (DEVILS CREEK)

CATEGORY	A	B	C	D
LNAV	610 (533-2.8)			NOT AUTHORISED
CIRCLING	850 (773-2.4)		1050(973-4.0)	
ALTERNATE	(1273-4.4)		(1473-6.0)	

Changes: CHART TITLE, WPT IDENT, EDITORIAL

CPRGN02-177

