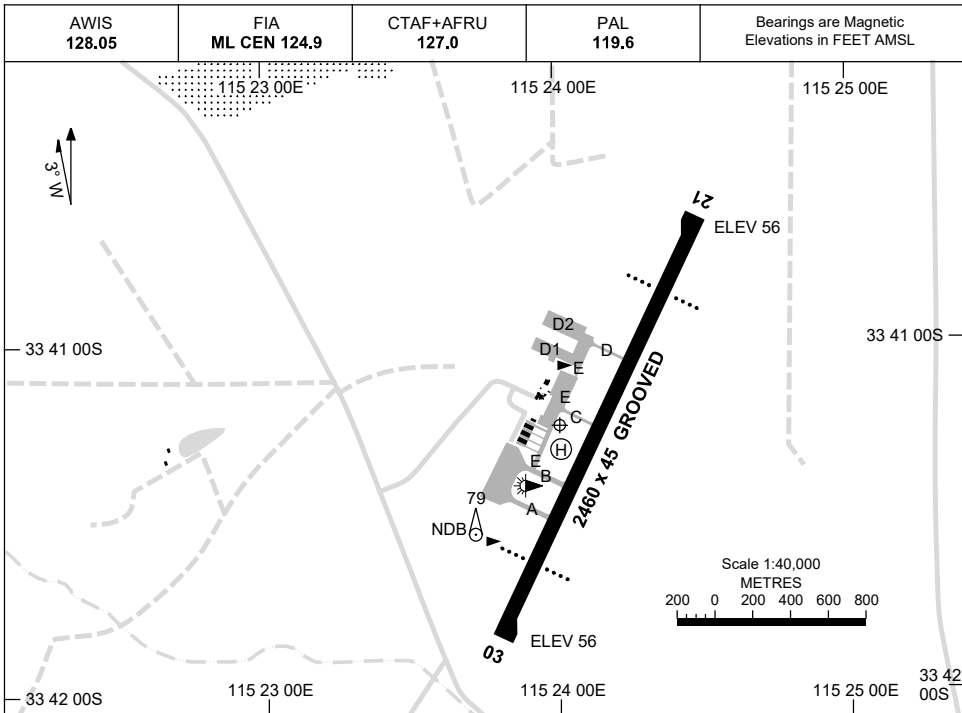


8 SEP 2022

AD ELEV 56  
33 41 14S 115 24 01E

AERODROME CHART  
**BUSSELTON, WA (YBLN)**



	<b>AERODROME LIGHTING</b>
<b>RWY</b>	TAXIWAY : BLUE EDGE RL : PAL 119.6 , SDBY (25 SEC)
<b>03</b> <small>028</small>	PAPI 3.0° 65FT LIRL
<small>208</small> <b>21</b>	PAPI 3.0° 65FT LIRL

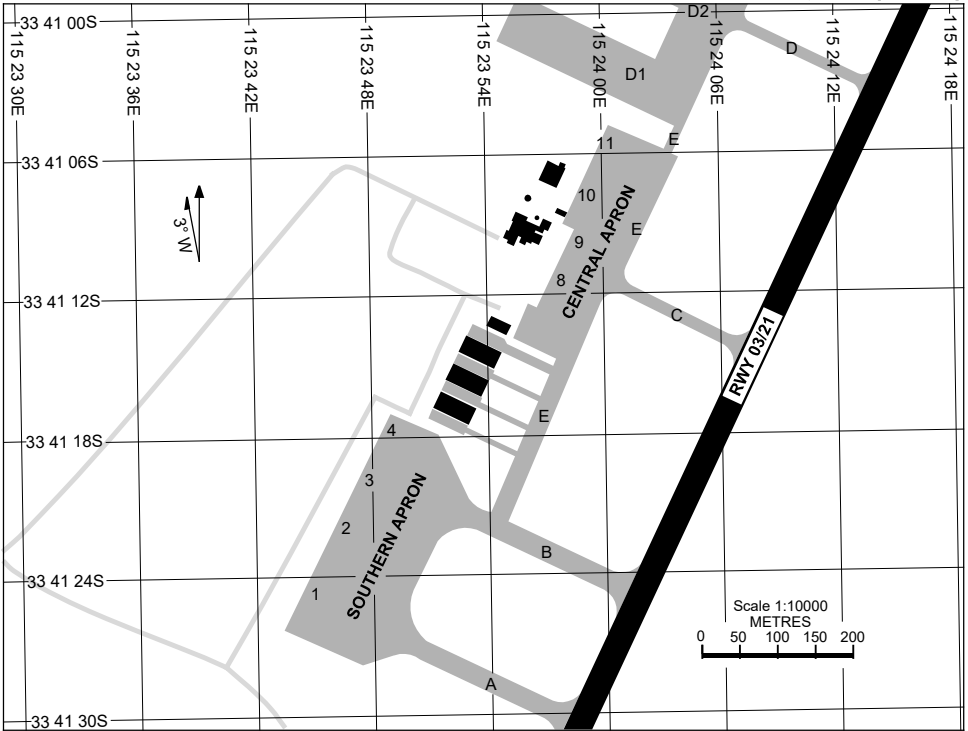
**NOTES**

1. FIA FREQ 124.9 AVBL CIRCUIT AREA.

Changes: NOTE 2 DELETED.

BLNAD01-172

24 MAR 2022



**PARKING POSITION INFORMATION**

STAND	CO-ORDINATES		ELEV (ft)	CAPACITY	HYDRANT FUEL
1	33 41 24.76S	115 23 45.01E	54	A333/B789	JET A1
2	33 41 21.95S	115 23 46.61E	54	A321/B739	JET A1
3	33 41 19.85S	115 23 47.81E	54	A321/B739	JET A1
4	33 41 17.75S	115 23 49.02E	54	A321/B739	JET A1
8	33 41 11.31S	115 23 57.77E	55	A320/F100/B738	JET A1/Bowser
9	33 41 09.69S	115 23 58.69E	55	A320/F100	JET A1
10	33 41 07.55S	115 23 59.98E	56	A320/B738/B739	JET A1
11	33 41 05.55S	115 24 00.12E	57	A320/B738/B739	JET A1

# GNSS ARRIVAL PROCEDURES BUSSELTON, WA (YBLN)

23 MAY 2019

AWIS 128.05	FIA ML CEN 124.9	CTAF+AFRU 127.0	PAL 119.6		Bearings are Magnetic Elevations in FEET AMSL
----------------	---------------------	--------------------	--------------	--	--

25 NM MSA

**REFERENCE WAYPOINT BLN NDB**

10 NM MSA 1900

AD ELEV 56

**SECTOR A**

**MISSED APPROACH:**  
CLIMB ON TRACK TO 1000FT, THEN TURN AS APPROPRIATE TO TRACK 030° REFERENCE BLN NDB. CLIMB TO 2400FT.

NM TO BLN NDB	25	15	7	5	2	0											
<b>CIRCLING MINIMA</b>	A,B: 720-2.4			C: 880-4.0		D: 1140-5.0											
NM TO BLN NDB	3.9	3	2	1.5	1	0.7	0.2										
ALT (3° APCH PATH)	1900	1620	1300	1140	980	880	720										

**SECTOR B**

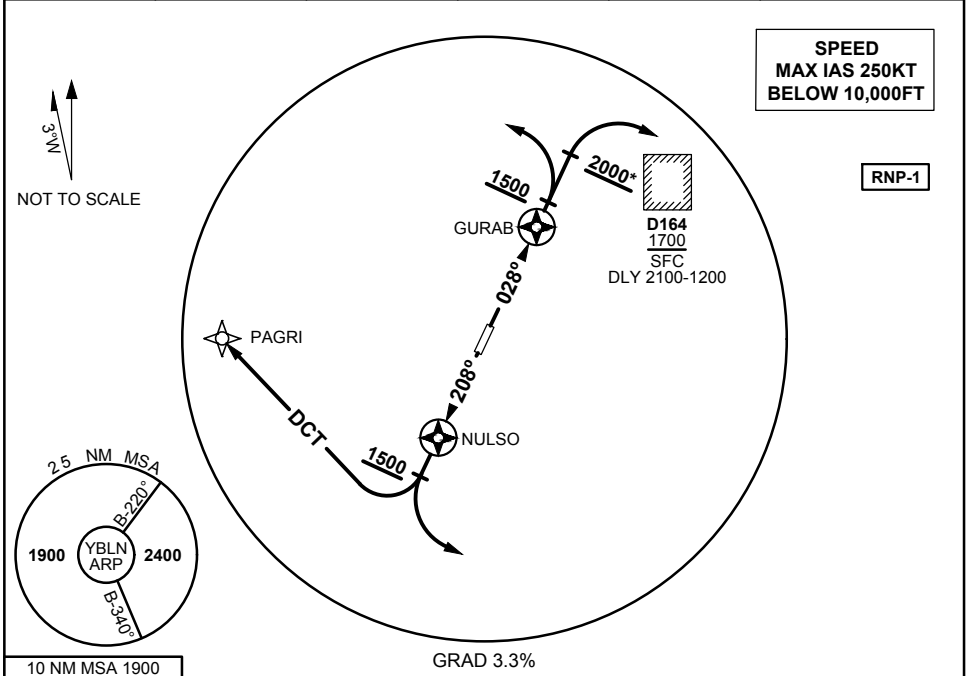
**MISSED APPROACH:**  
CLIMB ON TRACK TO 1900FT.

NM TO BLN NDB	25	17	15	7	5	2	0										
<b>CIRCLING MINIMA</b>	A,B: 720-2.4			C: 880-4.0		D: 1140-5.0											
NM TO BLN NDB	5.5	5	4	3	2	1.5	1	0.7	0.2								
ALT (3° APCH PATH)	2400	2250	1940	1620	1300	1140	980	880	720								

**STANDARD INSTRUMENT DEPARTURES (SID)  
BUSSELTON ONE DEPARTURE (RNAV) - RWY 03 & 21  
BUSSELTON, WA (YBLN)**

17 JUN 2021

AWIS 128.05	FIA ML CEN 124.9	CTAF + AFRU 127.0	PAL 119.6		Bearings are Magnetic Elevations in FEET AMSL
----------------	---------------------	----------------------	--------------	--	--



**BUSSELTON ONE DEPARTURE (RNAV)**

**RWY 03 NORTH, SOUTH & WEST**

- Track 028° to GURAB
- After passing GURAB **AND** NOT BLW 1500FT turn LEFT
- Intercept flight plan route

**RWY 03 EAST**

- \*GRAD 4.0% to 2000FT IF D164 ACT
- Track 028° TO GURAB
- After passing GURAB **AND** NOT BLW 2000FT\* turn RIGHT
- Intercept flight plan route

**RWY 21 NORTH & WEST**

- Track 208° to NULSO
- After passing NULSO **AND** NOT BLW 1500FT turn RIGHT DCT to PAGRI
- Intercept flight plan route

**RWY 21 SOUTH & EAST**

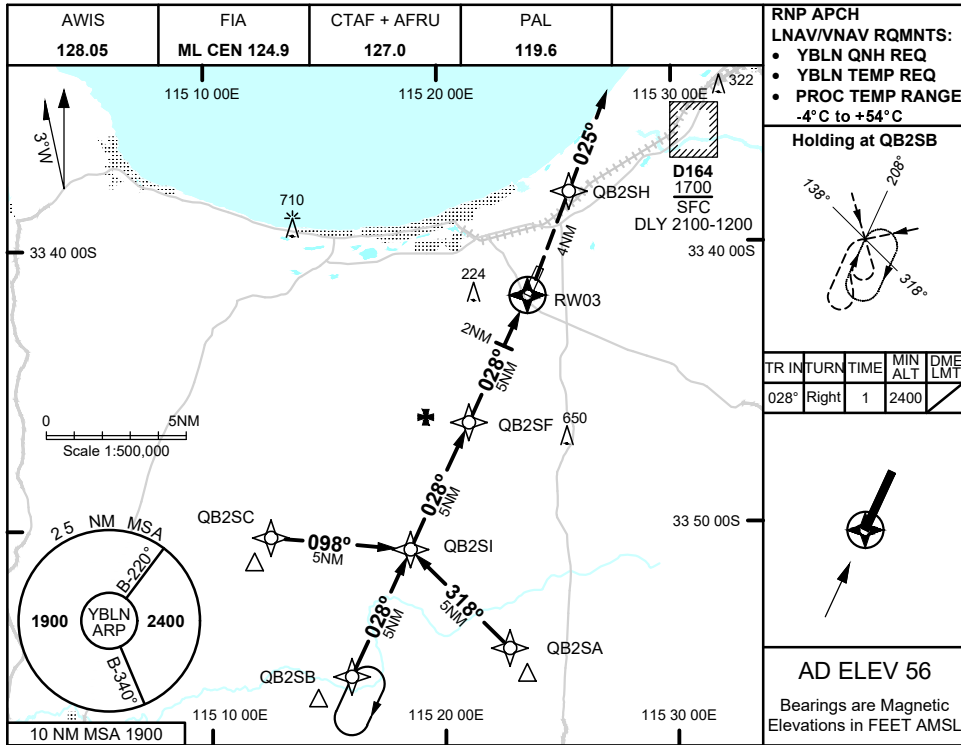
- Track 208° to NULSO
- After passing NULSO **AND** NOT BLW 1500FT turn LEFT
- Intercept flight plan route

Changes: DEP RWY 03 EAST

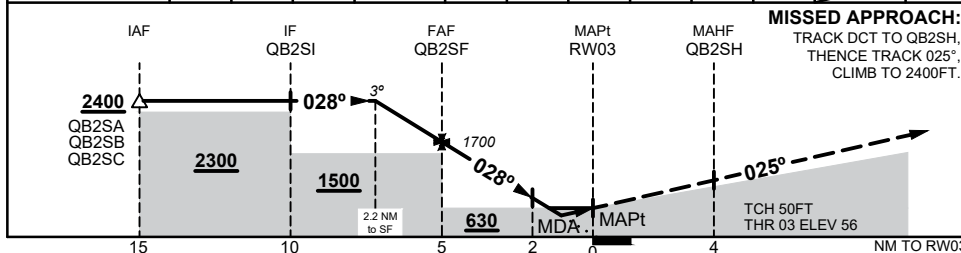
BLNDP01-167



7 SEP 2023



NM TO NEXT WP	2.2	2	1	QB2SF	4	3	2	1.4	1	0.7	RW03
ALT (3° APCH PATH)	2400	2330	2020	1700	1380	1060	740	560	420	330	



**NOTES**

- MAX IAS:  
INITIAL : 210KTS

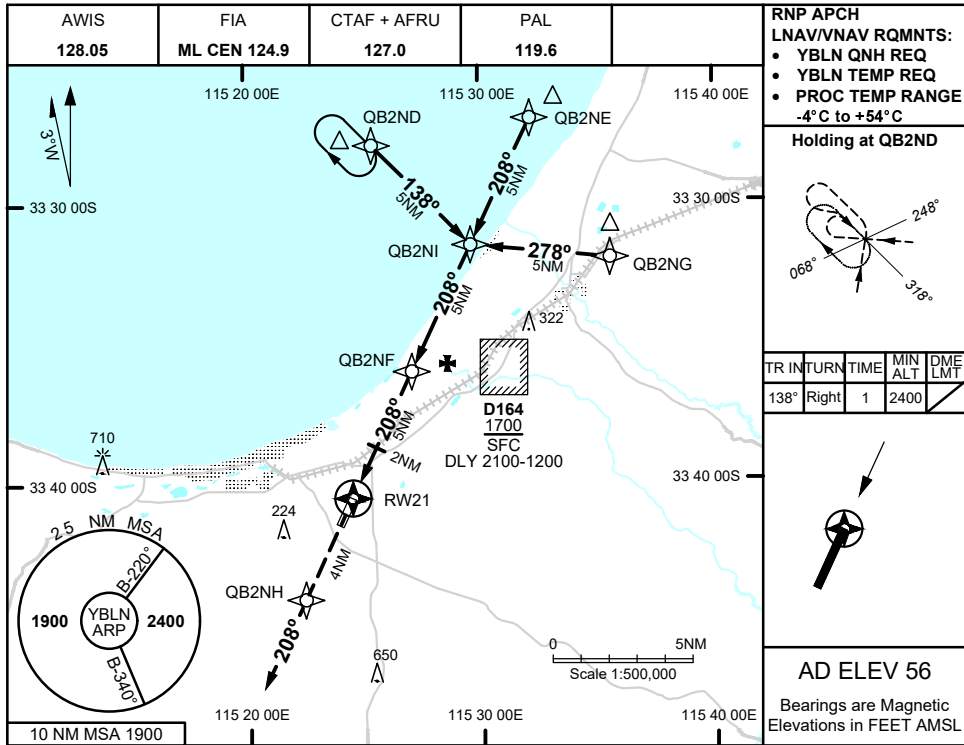
CATEGORY	A	B	C	D
LNAV/VNAV	<b>330</b> (274 - 1.5)			
LNAV	<b>560</b> (504 - 2.8)			
CIRCLING	<b>710</b> (654 - 2.4)		<b>890</b> (834 - 4.0)	
ALTERNATE	(1154 - 4.4)		(1594 - 7.0)	

Changes: CHART TITLE, PBN SPECIFICATION

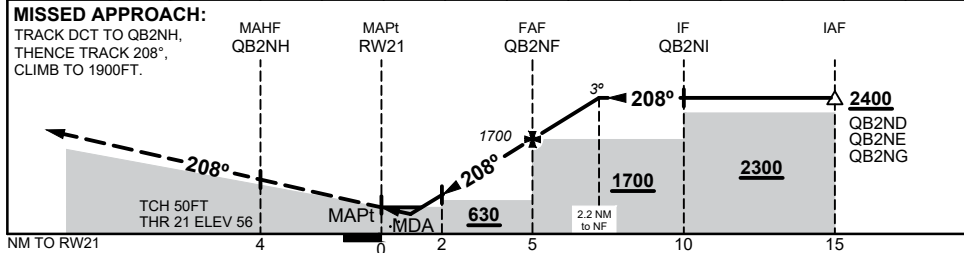
BLNGN01-176



7 SEP 2023



NM TO NEXT WP	RW21	0.6	1	1.4	2	3	4	QB2NF	1	2	2.2
ALT (3° APCH PATH)		310	420	560	740	1060	1380	1700	2020	2330	2400



**NOTES**

1. MAX IAS:  
INITIAL : 210KTS
2. STRAIGHT AND LEFT  
INITIAL OVERLAY YBUN  
RNAV RWY 25 MISSED  
APCH

CATEGORY	A	B	C	D
LNAV/VNAV	<b>310</b> (254 - 1.5)			
LNAV	<b>560</b> (504 - 2.8)			
CIRCLING	<b>710</b> (654 - 2.4)	<b>890</b> (834 - 4.0)	<b>1150</b> (1094 - 5.0)	
ALTERNATE	(1154 - 4.4)	(1334 - 6.0)	(1594 - 7.0)	

Changes: CHART TITLE, PBN SPECIFICATION

BLNGN02-176



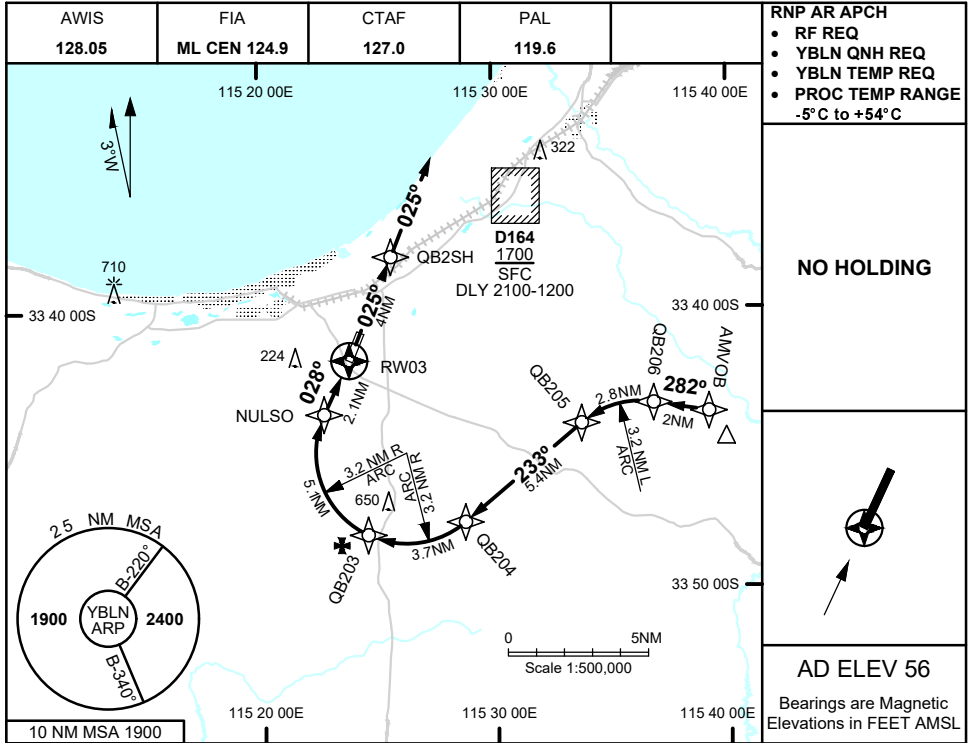
# FOR CASA APPROVED OPERATORS ONLY

USE QNH

RNP X RWY 03 (AR)

**BUSSELTON, WA (YBLN)**

7 SEP 2023

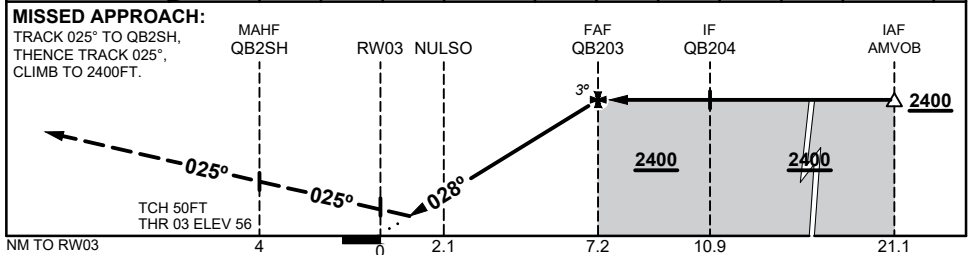


**NO HOLDING**

**AD ELEV 56**

Bearings are Magnetic  
Elevations in FEET AMSL

NM TO NEXT WP	RW03	0.7	1	2	NULSO	1	2	3	4	5	QB203	
ALT (3° APCH PATH)		320	420	740	780	1100	1420	1740	2050	2370	2400	



**NOTES**  
 1. MAX IAS:  
 INITIAL : 215KTS

CATEGORY	A	B	C	D
RNP (0.3)	<b>320 (264 - 1.5)</b>			
CIRCLING	NOT AUTHORISED			
ALTERNATE	(1154 - 4.4)		(1334 - 6.0) (1594 - 7.0)	

Changes: CHART TITLE, PBN SPECIFICATION BLNGN03-176

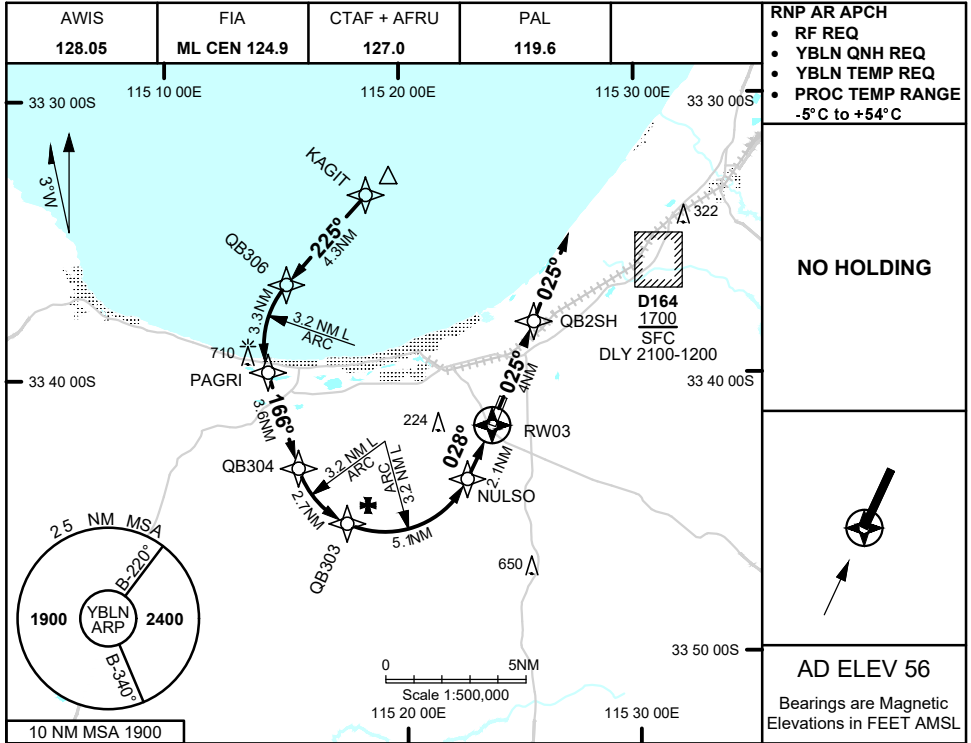
# FOR CASA APPROVED OPERATORS ONLY

USE QNH

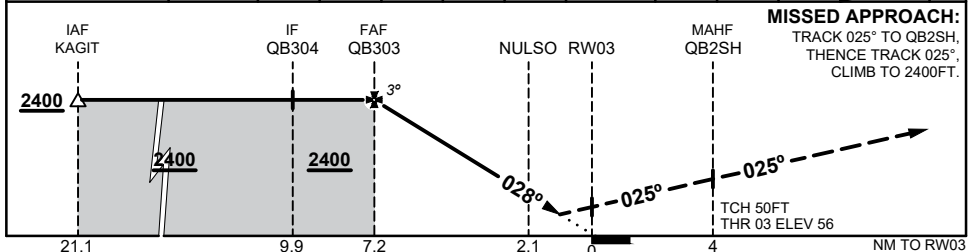
RNP W RWY 03 (AR)

## BUSSELTON, WA (YBLN)

7 SEP 2023



NM TO NEXT WP	QB303	5	4	3	2	1	NULSO	2	1	0.7	RW03	
ALT (3° APCH PATH)	2400	2370	2050	1740	1420	1100	780	740	420	320		



### NOTES

1. MAX IAS:  
INITIAL : 215KTS

CATEGORY	A	B	C	D
RNP (0.3)	320 (264 - 1.5)			
CIRCLING	NOT AUTHORISED			
ALTERNATE	(1154 - 4.4)		(1334 - 6.0) (1594 - 7.0)	

Changes: CHART TITLE, PBN SPECIFICATION

BLNGN04-176





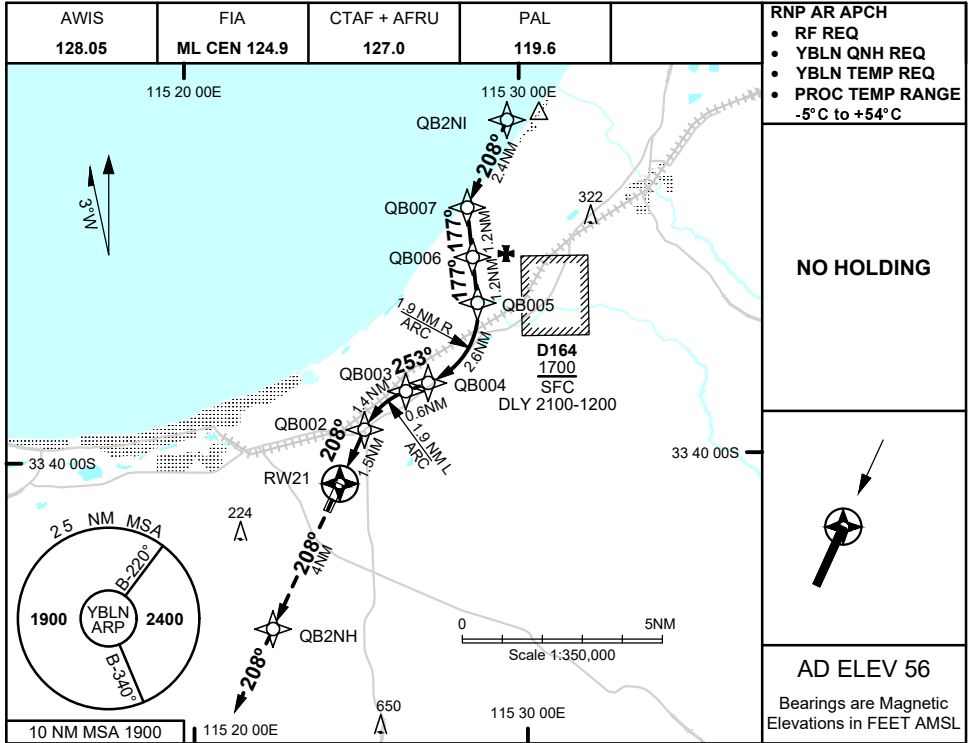
# FOR CASA APPROVED OPERATORS ONLY

USE QNH

RNP X RWY 21 (AR)

**BUSSELTON, WA (YBLN)**

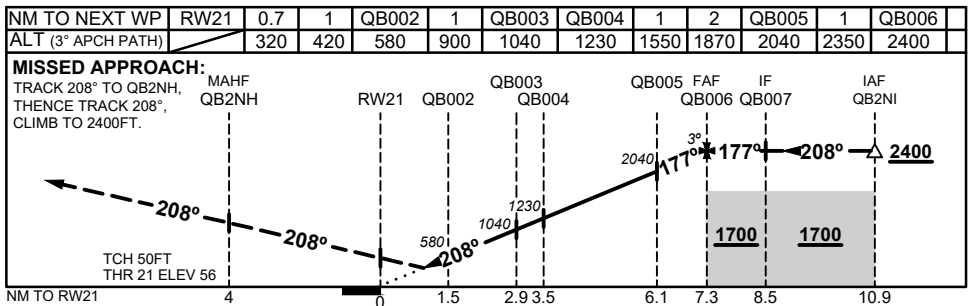
7 SEP 2023



**NO HOLDING**

**AD ELEV 56**

Bearings are Magnetic  
Elevations in FEET AMSL



**NOTES**

1. MAX IAS:  
FINAL : 160KTS
2. RNP 0.3 RQ FM  
QB007 TO RW21

CATEGORY	A	B	C	D
RNP (0.30)	<b>320 (264 - 1.5)</b>			
CIRCLING	NOT AUTHORISED			
ALTERNATE	(1154 - 4.4)	(1334 - 6.0)	(1594 - 7.0)	

Changes: CHART TITLE, PBN SPECIFICATION

BLNGN05-176



