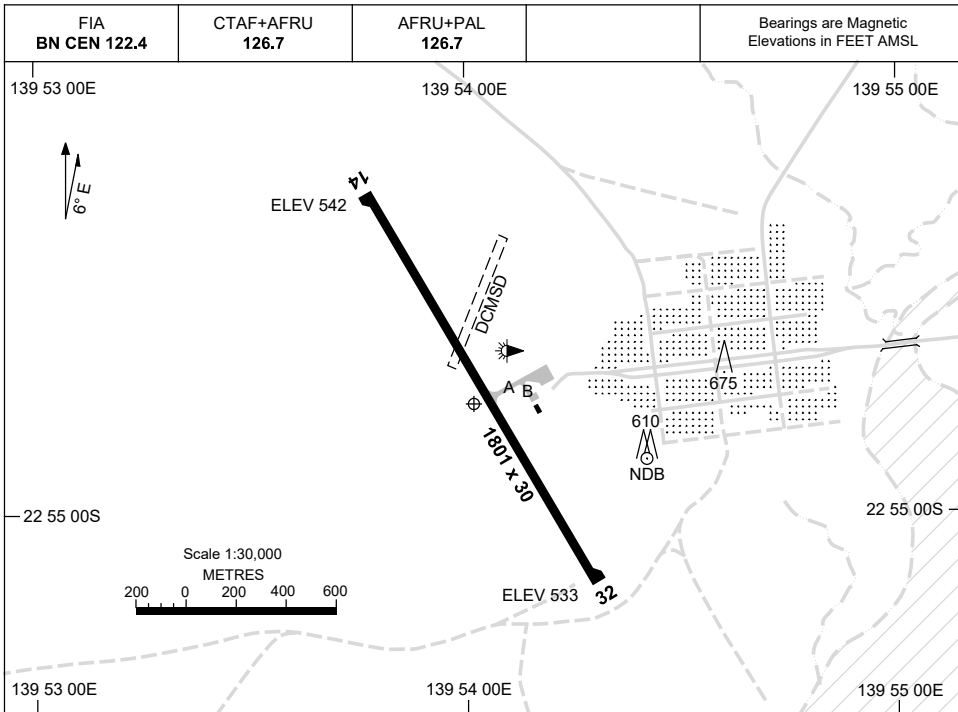


8 SEP 2022

AD ELEV 542
22 54 48S 139 53 59E

AERODROME CHART
BOULIA, QLD (YBOU)



	AERODROME LIGHTING
RWY	TAXIWAY : BLUE EDGE RL : AFRU+PAL 126.7 , SDBY (MAN ACT).
14 ¹⁴³ 323 32	LIRL LIRL

NOTES

1. FIA FREQ 122.4 AVBL FL135.

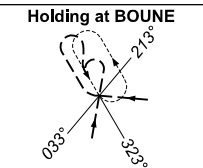
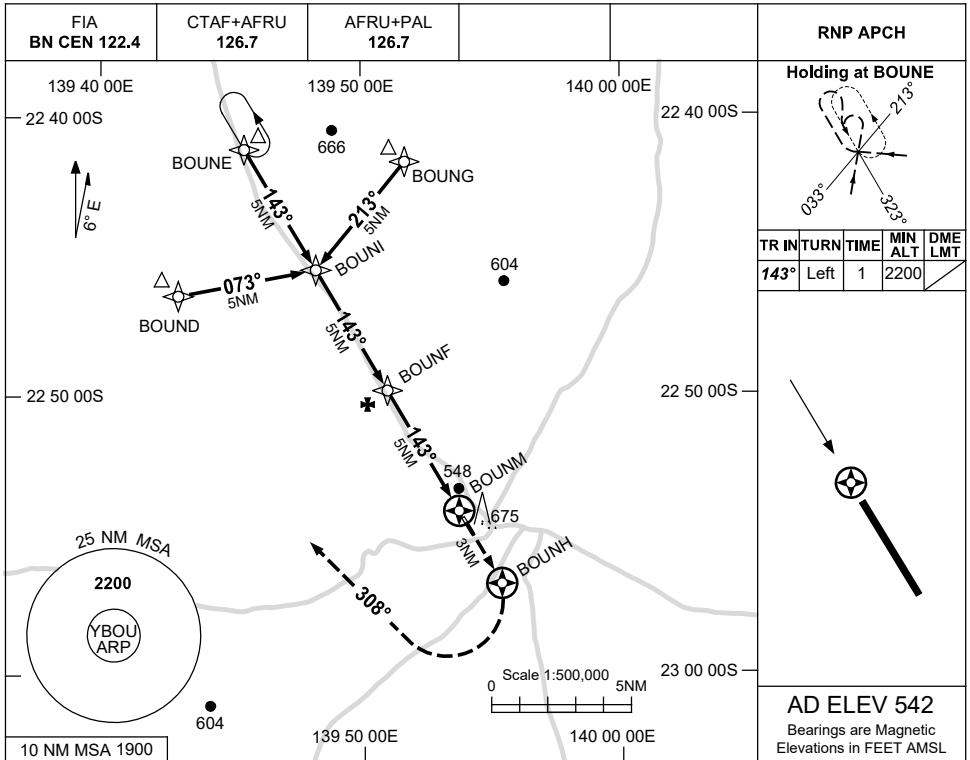
Changes: ARP LOCATION, SDBY PWR, Editorial.

BOUAD01-172

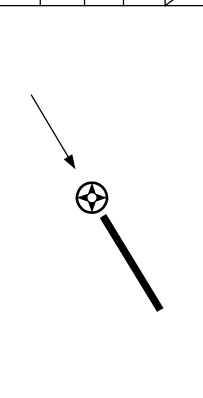
USE QNH

RNP N
BOULIA, QLD (YBOU)

16 JUN 2022

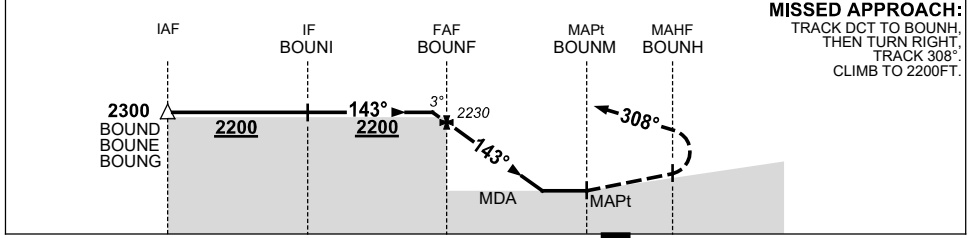


TR IN	TURN	TIME	MIN ALT	DME LMT
143°	Left	1	2200	



AD ELEV 542
 Bearings are Magnetic
 Elevations in FEET AMSL

NM TO NEXT WPT	0.2	BOUNF	4	3	2	1.9	1.6	BOUNM
ALT (3° APCH PATH)	2300	2230	1910	1590	1270	1240	1140	



MISSED APPROACH:
 TRACK DCT TO BOUNH,
 THEN TURN RIGHT,
 TRACK 308°,
 CLIMB TO 2200FT.

NOTES

CATEGORY	A	B	C	D
CIRCLING	1140 (598-2.4)		1240 (698-4.0)	NOT APPLICABLE
ALTERNATE	(1098-4.4)		(1198-6.0)	

1. MAX IAS:
 INITIAL : 210KT.

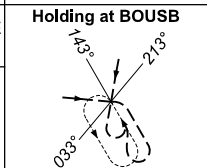
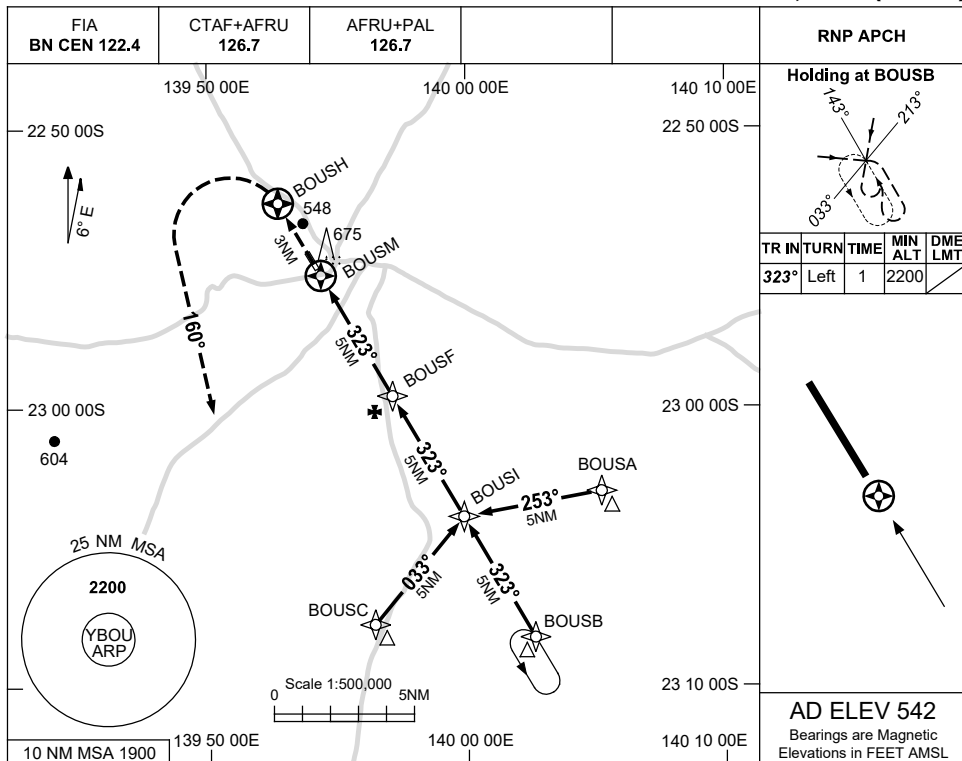
Changes: CHART TITLE, PBN SPECIFICATION BOX.

BOUGN01-171

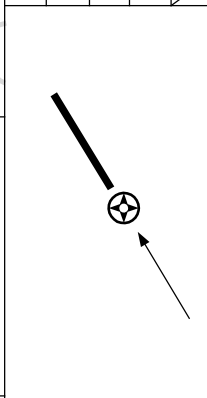
USE QNH

RNP S
BOULIA, QLD (YBOU)

16 JUN 2022

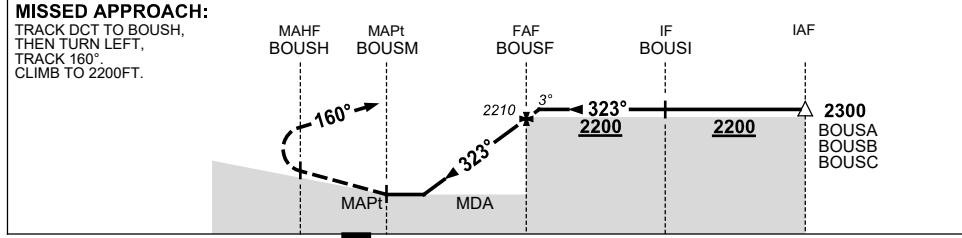


TR	IN	TURN	TIME	MIN ALT	DME LMT
323°	Left	1		2200	



AD ELEV 542
Bearings are Magnetic Elevations in FEET AMSL

NM TO NEXT WPT	BOUSM	1.6	2	3	4	BOUSF	0.3					
ALT (3° APCH PATH)		1140	1240	1570	1890	2210	2300					



NM TO BOUSM 3 0 5 10 15

NOTES

CATEGORY	A	B	C	D
				NOT APPLICABLE
CIRCLING	1140 (598-2.4)		1240 (698-4.0)	
ALTERNATE	(1098-4.4)		(1198-6.0)	

1. MAX IAS: INITIAL : 210KT.

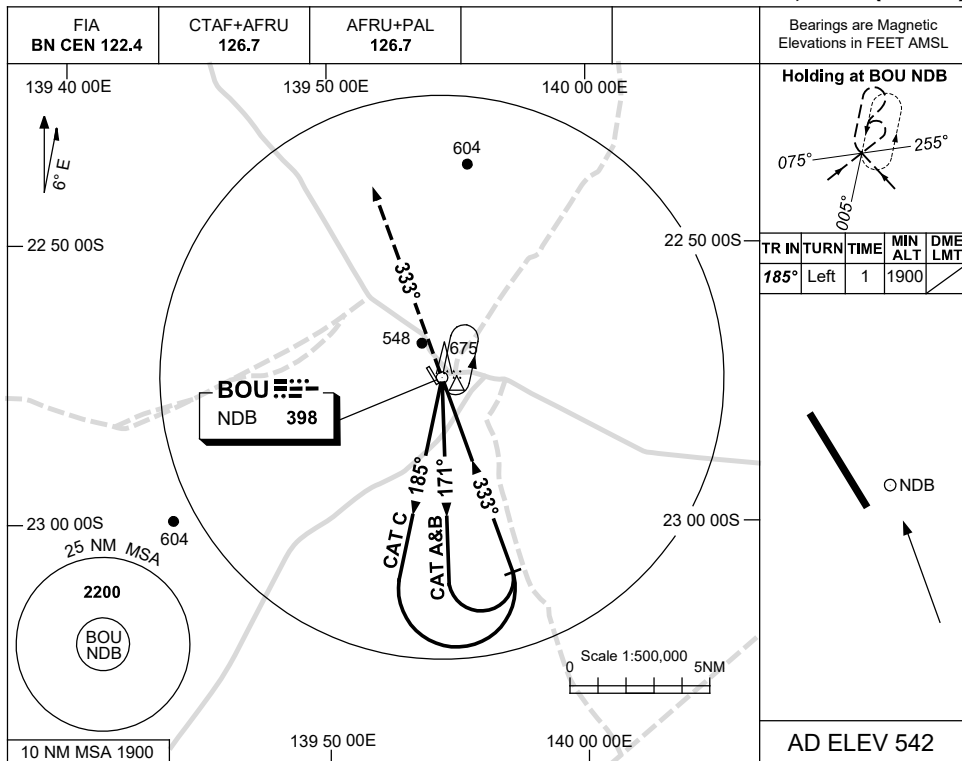
Changes: CHART TITLE, PBN SPECIFICATION BOX.

BOUGN02-171

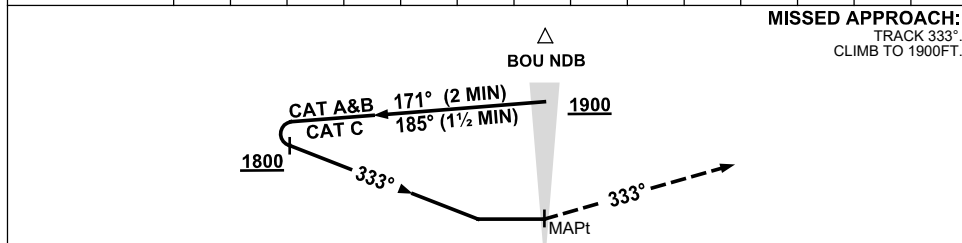
USE QNH

NDB-A
BOULIA, QLD (YBOU)

15 AUG 2019



DME DIST	NOT APPLICABLE									
ALT										



NOTES

CATEGORY	A	B	C	D
				NOT APPLICABLE
CIRCLING	1140 (598-2.4)		1240 (698-4.0)	
ALTERNATE	(1098-4.4)		(1198-6.0)	

1. MAX IAS:
 INITIAL : 210KT.

Changes: OUTBOUND MIN ALT, CO-ORD FORMAT, Editorial.

BOUNB01-160