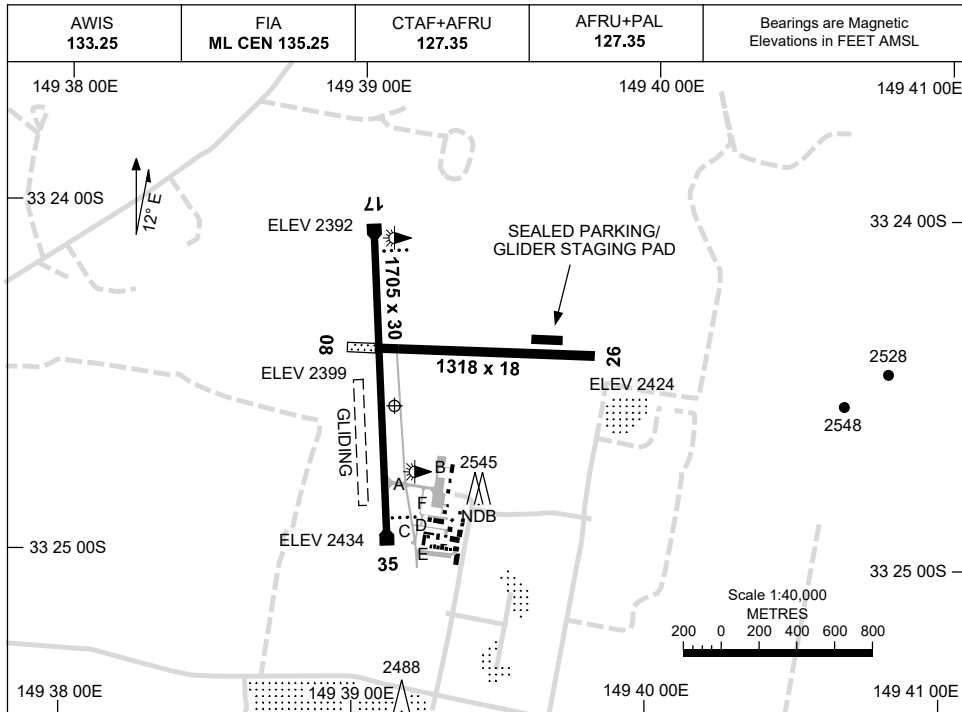


30 NOV 2023

AD ELEV 2435
33 24 34S 149 39 07E

AERODROME CHART
BATHURST, NSW (YBTH)



AERODROME LIGHTING	
RWY	TAXIWAY : GREEN CENTRELINE RL : AFRU+PAL 127.35 , SDBY (1 MINUTE)
17 <small>164</small>	PAPI 3.0° 41.5FT LIRL
<small>344</small> 35	PAPI RIGHT SIDE 3.0° 41.5FT LIRL
08 <small>079</small>	NIL
<small>259</small> 26	NIL

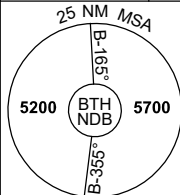
NOTES

Changes: WDI REMOVED.

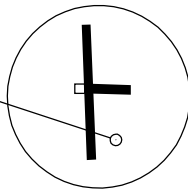
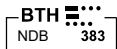
BTHAD01-177

8 SEP 2022

AWIS 133.25	FIA ML CEN 135.25	CTAF+AFRU 127.35	AFRU+PAL 127.35		Bearings are Magnetic Elevations in FEET AMSL
----------------	----------------------	---------------------	--------------------	--	--



REFERENCE WAYPOINT BTH NDB



10 NM MSA 5400

AD ELEV 2435

KADOM TO BTH

MISSED APPROACH:

TRACK 287°.
CLIMB TO 5200FT.

NM TO BTH NDB	25	15				6	5	4											
CIRCLING MINIMA				A,B: 3810-2.4			C: 3810-4.0			D: N/A									
NM TO BTH NDB	6	5	4	3	2	1	0.1												
ALT (3° APCH PATH)	5700	5380	5060	4740	4430	4110	3810												

CWR TO BTH

MISSED APPROACH:

TURN LEFT,
TRACK 340°.
CLIMB TO 5700FT.

NM TO BTH NDB	25	15				10	5												
CIRCLING MINIMA				A,B: 3810-2.4			C: 3810-4.0			D: N/A									
NM TO BTH NDB	7	6	5	4	3	2.7													
ALT (3° APCH PATH)	5200	4870	4550	4230	3920	3810													

VIRUR TO BTH

MISSED APPROACH:

TURN RIGHT,
TRACK 185°.
CLIMB TO 5700FT.

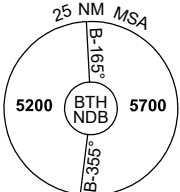
NM TO BTH NDB	25	15				5													
CIRCLING MINIMA				A,B: 3810-2.4			C: 3810-4.0			D: N/A									
NM TO BTH NDB	5	4	3	2	1	0.6													
ALT (3° APCH PATH)	5200	4880	4560	4240	3930	3810													

Changes: RWY 08/26.

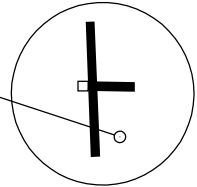
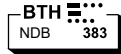
BTHDG01-172

8 SEP 2022

AWIS 133.25	FIA ML CEN 135.25	CTAF+AFRU 127.35	AFRU+PAL 127.35		Bearings are Magnetic Elevations in FEET AMSL
----------------	----------------------	---------------------	--------------------	--	--

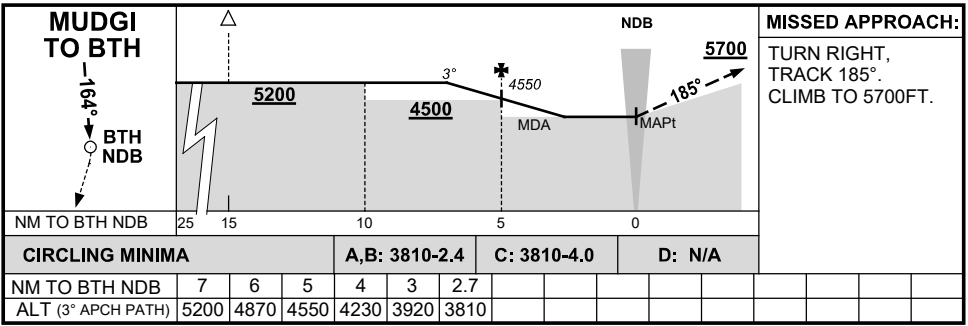
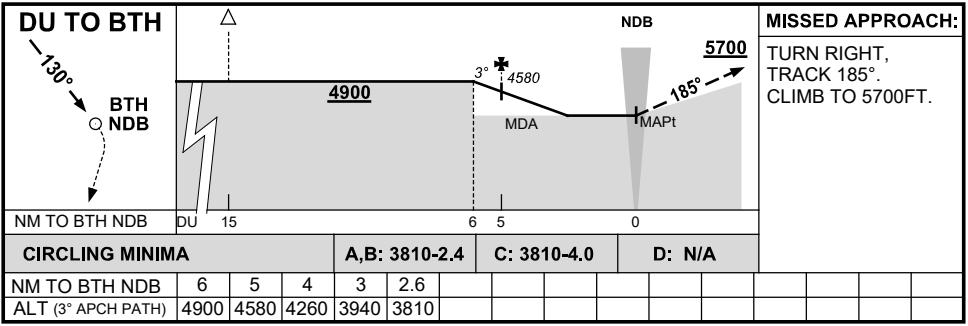
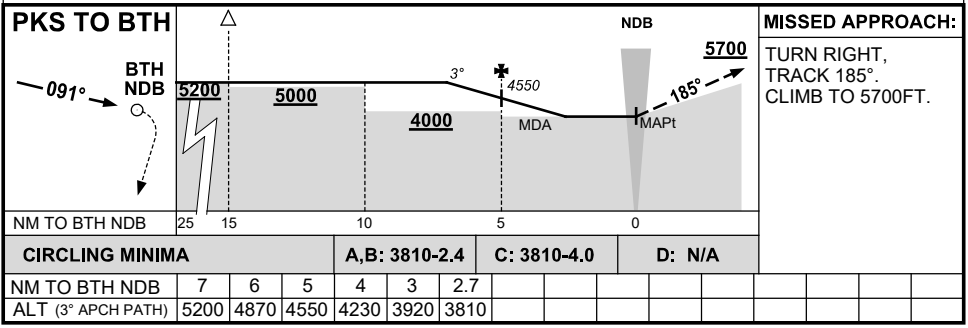


REFERENCE WAYPOINT BTH NDB



10 NM MSA 5400

AD ELEV 2435



Changes: RWY 08/26.

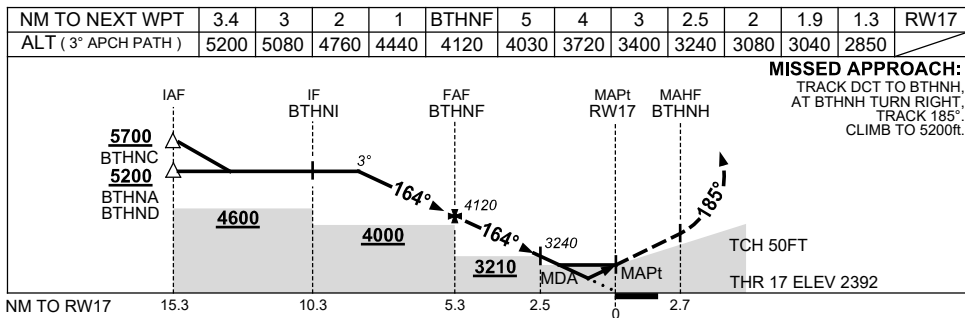
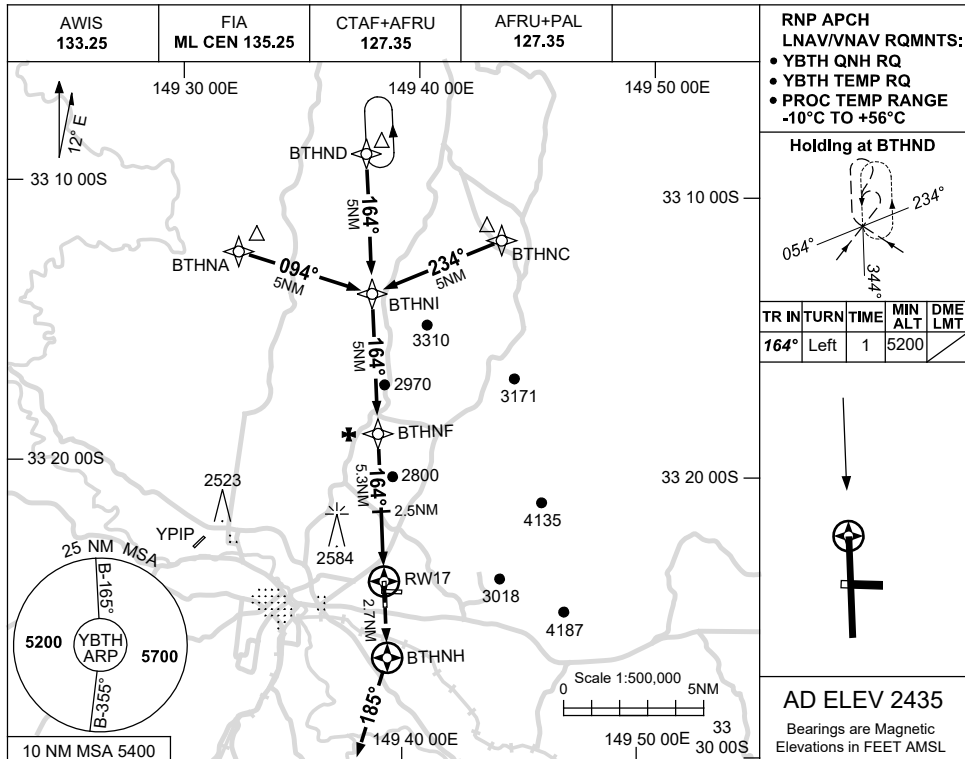
BTHDG02-172

USE QNH

RNP RWY 17

21 MAR 2024

BATHURST, NSW (YBTH)



NOTES

CATEGORY	A	B	C	D
LNAV/VNAV	2850 (458-2.6)			NOT APPLICABLE
LNAV	3040 (648-3.7)			
CIRCLING	3810 (1375-2.4)		3810 (1375-4.0)	
ALTERNATE	(1875-4.4)		(1875-6.0)	

1. MAX IAS:
INITIAL : 220KT.

Changes: GLIDING SYMBOL REMOVED, Editorial.

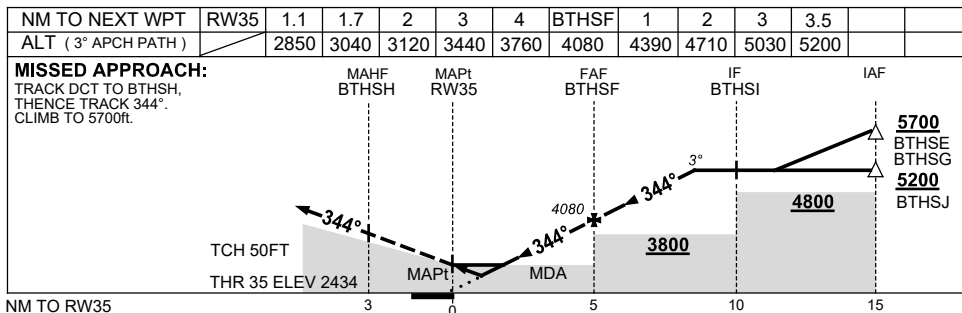
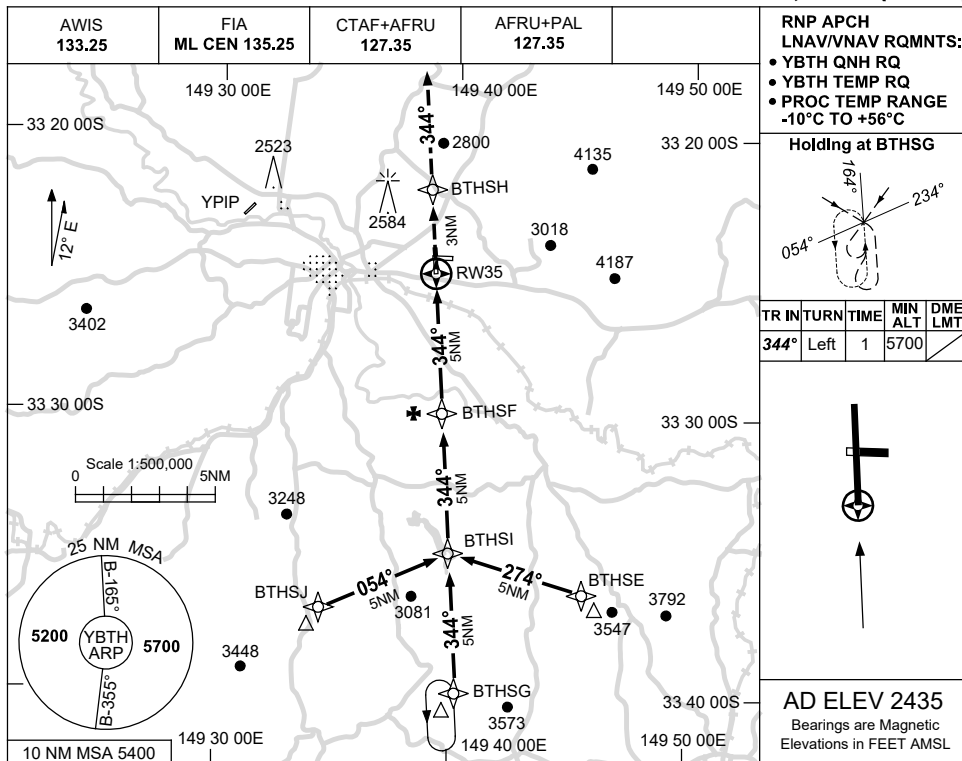
BTHGN01-178

USE QNH

RNP RWY 35

21 MAR 2024

BATHURST, NSW (YBTH)



NOTES

CATEGORY	A	B	C	D
LNAV/VNAV	2850 (416-2.3)			NOT APPLICABLE
LNAV	3040 (605-3.4)			
CIRCLING	3810 (1375-2.4)		3810 (1375-4.0)	
ALTERNATE	(1875-4.4)		(1875-6.0)	

1. MAX IAS: INITIAL : 210KT.

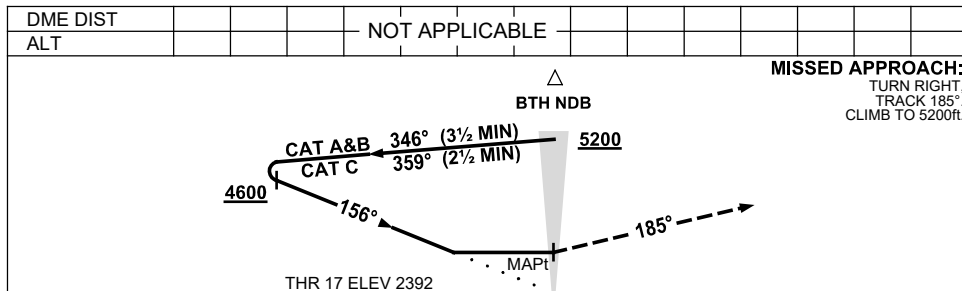
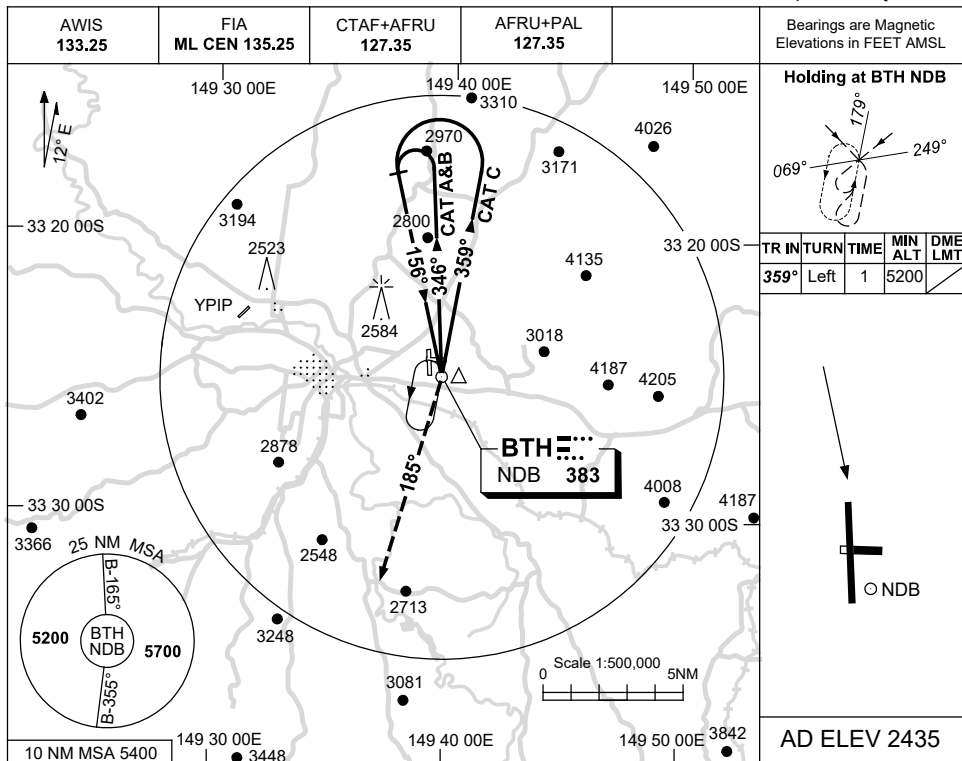
Changes: GLIDING SYMBOL REMOVED, Editorial.

BTHGN02-178

USE QNH

NDB RWY 17
BATHURST, NSW (YBTH)

21 MAR 2024



NOTES

CATEGORY	A	B	C	D
S-I NDB	3810 (1418-5.0)			NOT APPLICABLE
CIRCLING	3810 (1375-2.4)	3810 (1375-4.0)		
ALTERNATE	(1875-4.4)	(1875-6.0)		

Changes: GLIDING SYMBOL REMOVED, Editorial.

BTHNB01-178