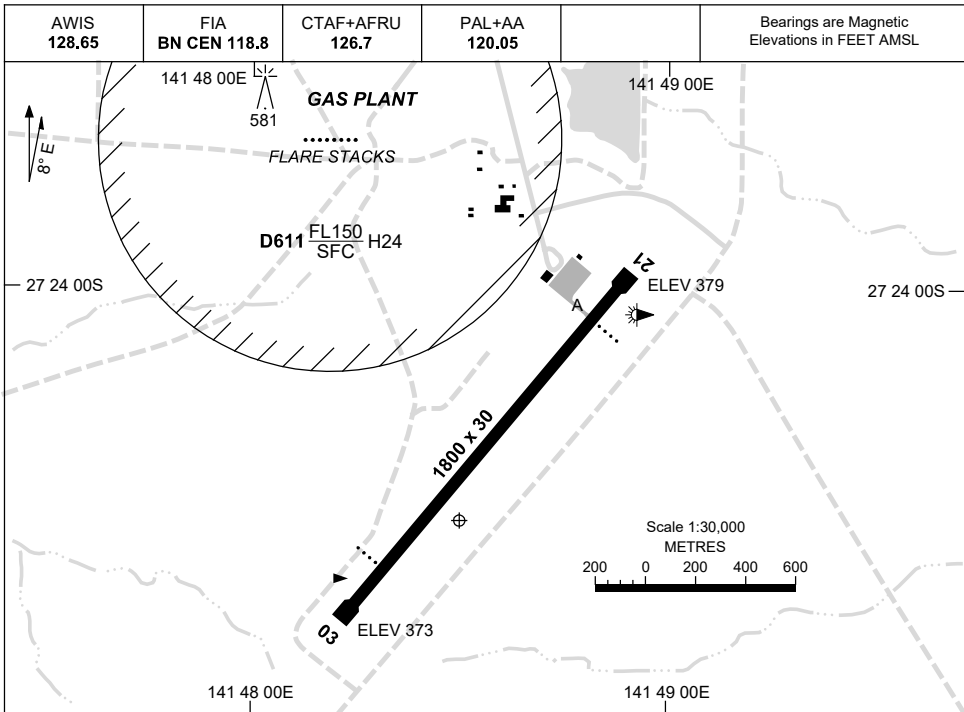


30 NOV 2023

AD ELEV 385  
27 24 30S 141 48 30E

AERODROME CHART  
**BALLERA, QLD (YLLE)**



	<b>AERODROME LIGHTING</b>
<b>RWY</b>	TAXIWAY : BLUE EDGE RL : PAL+AA 120.05 , SDBY, (MANUAL ACT. 45 MIN PN) PTBL (EMERG ONLY, 60 MIN PN)
<b>03</b> <sup>032</sup>	PAPI 3.0° 48FT LIRL PTBL
<sup>212</sup> <b>21</b>	PAPI 3.0° 48FT LIRL PTBL

**NOTES**

- FIA FREQ AVBL IN CIRCUIT AREA.
- ALL OPS - ADVISE ADO 20MIN PN ON 126.4.

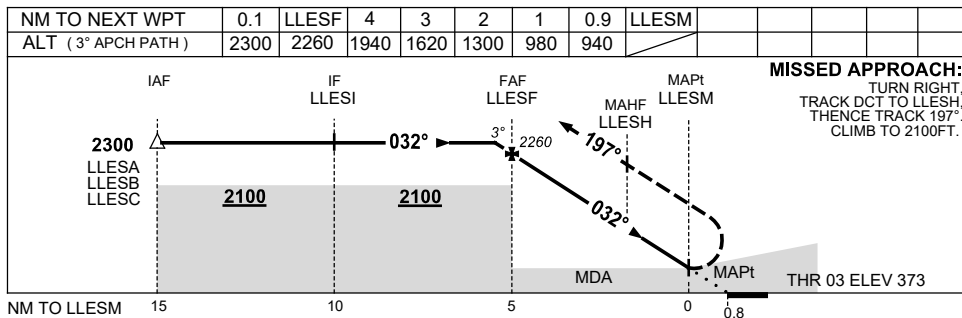
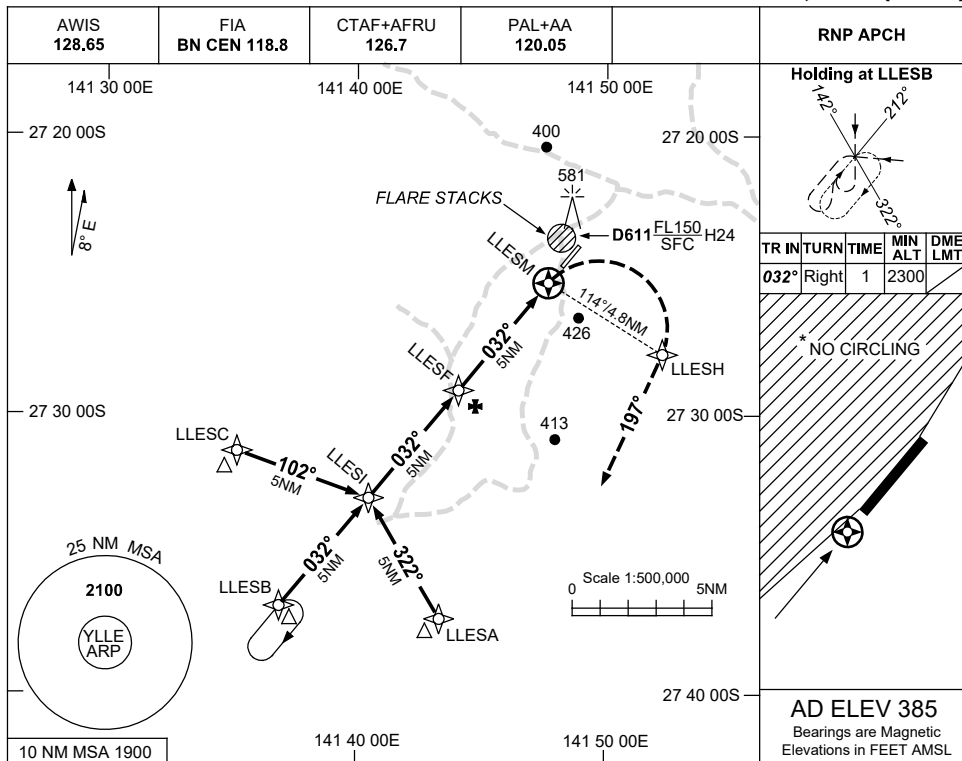
Changes: TERMINIAL BUILDINGS ADDED, NOTE 2, UNICOM REMOVED, Editorial.

LLEAD01-177

USE QNH

RNP RWY 03  
BALLERA, QLD (YLLE)

30 NOV 2023



NOTES

CATEGORY	A	B	C	D
LNAV	940 (567-3.2)			NOT APPLICABLE
CIRCLING *	990 (605-2.4)		1090 (705-4.0)	
ALTERNATE	(1105-4.4)		(1205-6.0)	

- MAX IAS:  
INITIAL : 210KT,  
MAP TURN: 200KT.
- NO CIRCLING WEST OF RWY 03/21.

Changes: UNICOM REMOVED, Editorial.

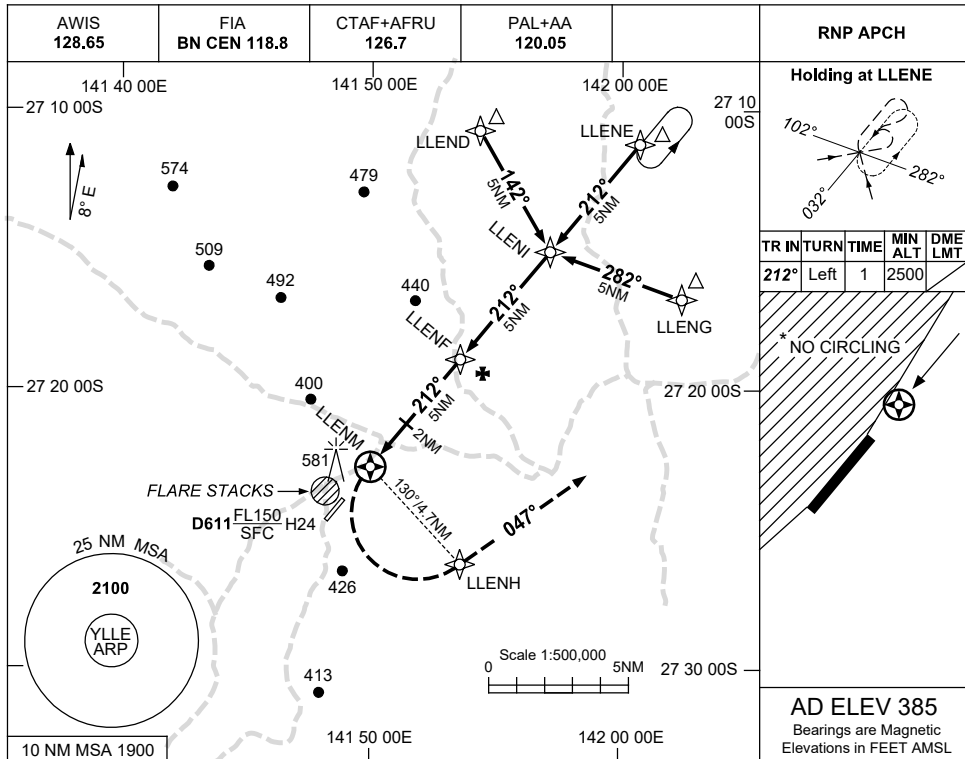
LLEGN01-177



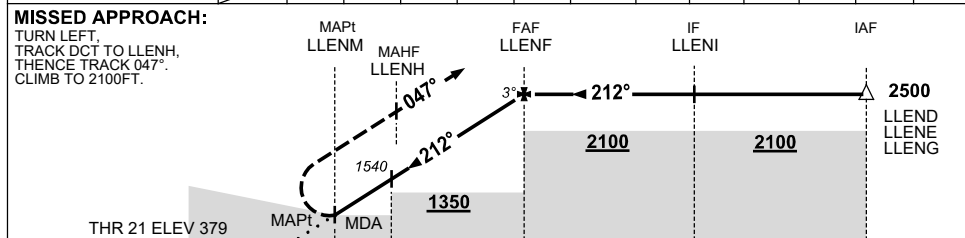
USE QNH

RNP RWY 21  
BALLERA, QLD (YLLE)

30 NOV 2023



NM TO NEXT WPT	LLENM	0.1	1	2	3	4	LLENF				
ALT (3° APCH PATH)		940	1220	1540	1860	2180	2500				



NM TO LLENM: 1.5, 0, 2, 5, 10, 15

**NOTES**

CATEGORY	A	B	C	D
LNAV	940 (555-3.1)			NOT APPLICABLE
CIRCLING *	990 (605-2.4)		1090 (705-4.0)	
ALTERNATE	(1105-4.4)		(1205-6.0)	

- MAX IAS:  
INITIAL : 210KT.  
MAP TURN: 200KT.
- NO CIRCLING WEST OF RWY 03/21.

Changes: UNICOM REMOVED, Editorial.

LLEGN02-177